

Start Here: _____

A Resource Guide

January 2003



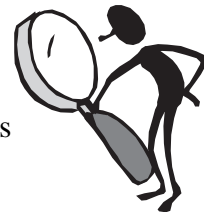
*An overview of services available through
the developmental disabilities system in Colorado*

Table of Contents

Who is This Guide For?	2
A few notes to the reader	
What is a Developmental Disability? A Developmental Delay?	3
Who is Responsible for Services in Colorado?	4
State level	
Local level	
How are Services Funded?	5
What is the First Step to Accessing Services?	6
Who will help you?	
What do you need to bring to apply for services?	
How long before a decision is made?	
What if eligibility is denied / approved?	
Why are there waiting lists for services?	
How do you get on a waiting list?	
What Happens When Funding for Services Becomes Available?	8
What Types of Services are Offered?	8
What Services are for Adults?	9
Comprehensive Services	
Supported Living Services (SLS)	
What Services are for Children?	10
Early Intervention Services (EI)	
Family Support Services Program (FSSP)	
Children's Extensive Support (CES)	
What are your Legal Rights?	13
Who can Help Protect Your Rights?	15
What if You are Dissatisfied with the Way Things are Going?	16
Conflict Resolution Procedures	
What if Services Need to be Changed?	16
What if you want to move?	
What Do You Need to Know About Transition?	17
Appendix A	19
Appendix B - List of Common Resources	27

Who is This Guide For?

"Start Here: A Resource Guide" provides an overview of services available through the developmental disabilities system in Colorado. It will walk the reader through basic information and explain how to take the first steps to access services. This guide also provides information about related resources and links, such as a website or reference to another more in depth publication that may be of help to persons with developmental disabilities.



A Few Notes to the Reader....

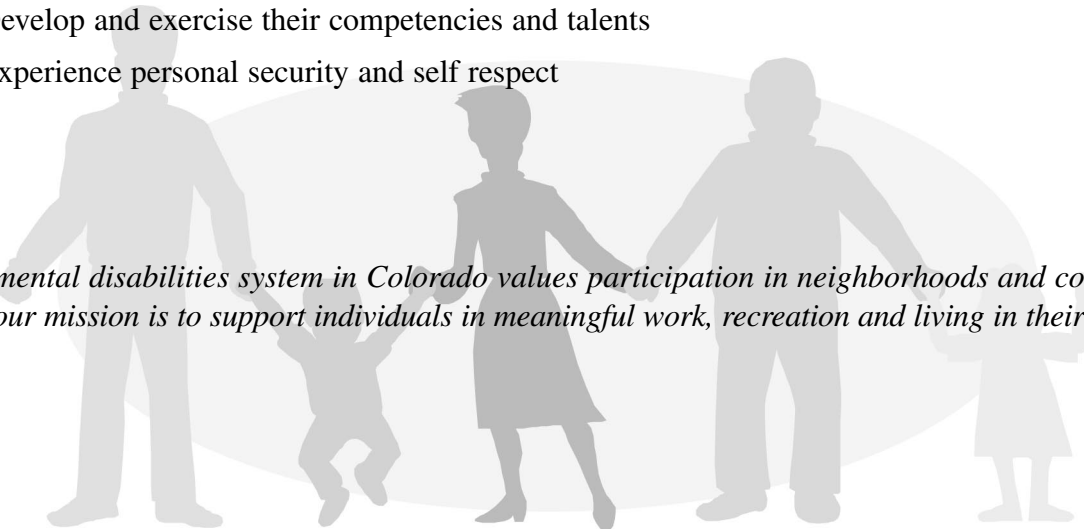
While reading the information in this guide, it is important for the reader to understand that the services mentioned here have a variety of eligibility criteria. This means that all the services mentioned may not be available to you or your child. Services target different age groups, so please **see page 17** for more information about key transition ages. Additionally, the availability and the types of services offered can vary from one community to the next.

Mission Statement:

Services for children and adults with developmental disabilities in Colorado are individualized based on the person's needs, goals, and desires. Colorado's community-based system of services and supports for persons with developmental disabilities joins with others to offer the necessary supports with which all people with developmental disabilities have their rightful chance to:

- ◆ Be included in Colorado community life
- ◆ Make increasingly responsible choices
- ◆ Exert greater control over their life circumstances
- ◆ Establish and maintain relationships and a sense of belonging
- ◆ Develop and exercise their competencies and talents
- ◆ Experience personal security and self respect

The developmental disabilities system in Colorado values participation in neighborhoods and community life. In addition, our mission is to support individuals in meaningful work, recreation and living in their community.



Some of the terminology used in this guide is specific to the developmental disabilities system, and may be unfamiliar to you. There is a Glossary of Terms in Appendix A for your reference.

What is a Developmental Disability?

In Colorado, a developmental disability is defined as a disability that:

- ✓ Occurs before the person reaches 22 years of age,
- ✓ Substantially impacts the person's daily life,
- ✓ Is caused by mental retardation or related conditions...for example - cerebral palsy, autism, epilepsy, Down Syndrome, or other neurological conditions, and
- ✓ Impairs the person's general intellectual functioning: IQ 70 or below,
- ✓ Significantly limits daily living skills in 2 or more areas.

Community Centered Boards (see **page 21** for a listing) are responsible for determining eligibility for developmental disabilities services in Colorado.

Note: *Colorado's definition of a developmental disability is different from the federal definition. For the full state and federal definitions, please refer to the glossary.*

There are other disabilities that might appear similar to a developmental disability and sometimes people are confused about the differences. For example, a person with a learning disability may have trouble with a specific area, such as reading or communicating, but overall they do not have a disability related to their intelligence or adaptive skills. Another frequently mistaken disability is mental illness, where a person may have extreme problems with their thinking or daily living skills but this is caused by their mental illness and not by a generalized impairment of their intelligence. A developmental disability is determined by the cause, the severity of the impact on the person's general intelligence and daily living skills, and must occur before age 22.

What is a Developmental Delay?



A developmental delay refers to the slowed or impaired development of a child who meets one or more of the following criteria:

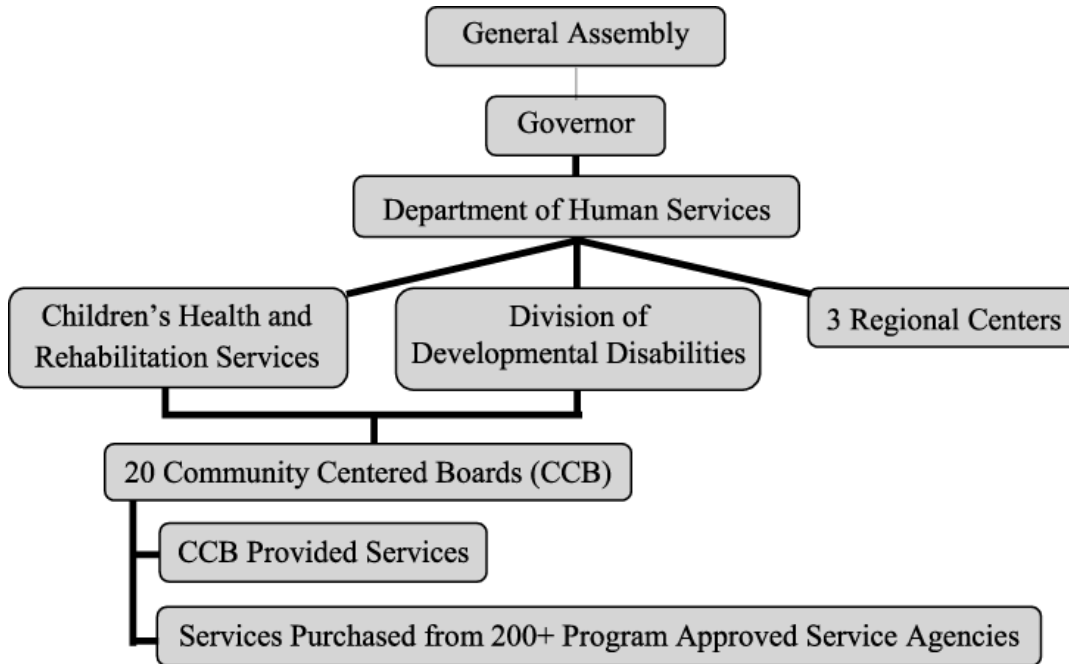
(1) children less than five years of age who experience a delay in one or more of the following areas:

- a) physical or motor (moving);
- b) communication (babbling/talking);
- c) sensory (hearing/seeing);
- d) cognition (learning);
- e) social/emotional (playing and interacting);
- f) adaptive development (self help skills).

(2) children less than five years of age who are at risk of a developmental disability because of the presence of chromosomal conditions, congenital syndromes, metabolic disorders, prenatal and perinatal infections, postnatal conditions affecting development, or low birth weight.

(3) children less than three years of age whose parents have a developmental disability.

Who Is Responsible for Services in Colorado?



The above chart reflects the developmental disabilities system in Colorado. As you will read later, there are many other community providers and systems that the developmental disabilities system interacts with, and collaborates with, to provide an overall community-based system of services and supports.

State Level

The Colorado Department of Human Services (CDHS) is authorized by Colorado statute (CRS 27-10.5) to administer services for persons with developmental disabilities. The State directly operates three Regional Centers that provide the most restrictive 24-hour care programs located in Wheat Ridge, Grand Junction, and Pueblo. Regional Centers account for only 5% of adults with developmental disabilities served. The vast majority of services are community-based and are overseen by two units within CDHS:

Division of Developmental Disabilities Services (DDDS) is the division that is directly responsible for community-based services for ADULTS with developmental disabilities.



Children's Health & Rehabilitation Services (CHRS) is the unit that is directly responsible for CHILDREN with developmental disabilities and their families. In this guide, anytime the information deals with children only, the text will be in this font with a baby picture.

Local Level

Community Centered Boards (CCBs) are nonprofit organizations contracted with by DDDS and CHRS to manage resources at the local level, determine eligibility for community-based services and provide case management services. The twenty Community Centered Boards are designated by the State and may either provide child and adult services directly or purchase services.

Program Approved Service Agencies (PASA's) are private agencies; recommended by CCBs and approved by the State for purchase of service through CCB's. PASA's only provide direct services.

How Are Services Funded?

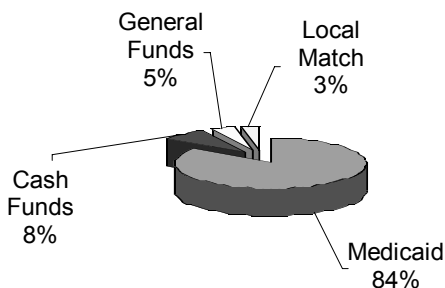
The vast majority of funding for services are appropriated from the Colorado Legislature and administered through the Colorado Department of Human Services (CDHS). Within CDHS, Division of Developmental Disabilities Services is directly responsible for adult services funding and Children's Health and Rehabilitation Services is directly responsible for funding to children and their families. There is no entitlement to funding or services within the developmental disabilities system; therefore, not everyone who is eligible for services receives services. There are waiting lists for services. It is the Community Centered Boards' responsibility to determine through the Individualized Planning (IP) process what level of support an individual requires and how much funding is necessary to meet the needs of each eligible person based on that person's IP.



Funding For ADULT Services

In fiscal year 2003, the Colorado Legislature appropriated state funds to serve approximately 7,000 adults in the community system. As illustrated in the graphic below, a large part of funding for adult services is Medicaid. The State uses money that has been appropriated by the Legislature (called General Funds) as match for Federal Medicaid funds. Given that most adults with developmental disabilities are Medicaid eligible, accessing Medicaid funds is a good way for the State to maximize the amount of dollars available to provide services to adults. The primary sources of funding for adult services (Comprehensive and Supported Living Services) include:

Source of Adult Funds



Medicaid (which consists of 50% State General Fund dollars and 50% matching Federal Medicaid dollars)

Cash Funds (the portion of funds paid by some persons receiving services for the cost of their care)

General Funds (these are state dollars that do not have a federal match)

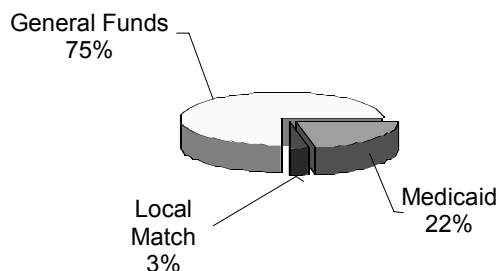
Local Match (e.g. county mill levy funds, cash donations, in-kind donations, grants, etc.)



Funding for CHILD AND FAMILY Services

In fiscal year 2003, the Colorado Legislature appropriated resources to serve 1,539 children in Early Intervention services, 1,176 children and families in Family Support Services and 222 children in the Children's Extensive Support program. As illustrated in the graphic below, most of the funding for child and family services is State General Funds, with the exception of the CES program which is funded through Medicaid.

Source of Child & Family Funds



General Funds (these are state dollars that do not have a federal match)

Medicaid (CES program only, which consists of 50% State General Fund dollars and 50% matching Federal Medicaid dollars)

Local Match (e.g. county mill levy funds, cash donations, in-kind donations, grants, etc.)

What Is The First Step to Accessing Services?

If you think you or your family member may have a developmental disability, contact your local Community Centered Board (CCB) to determine eligibility for services. (See list of Community Centered boards on **page 21.**) If you are still not sure who to contact, call the Division of Developmental Disabilities Services, at (303) 866-7450.



If your child is 0-3 years old, you may be referred to other services, such as Early Childhood Connections (www.cde.state.co.us/earlychildhoodconnections or 1-888-777-4041).

There is no charge for an eligibility determination.

Who Will Help You? _____

Case Managers (also known as Service or Resource Coordinators) are qualified professionals trained to help people with developmental disabilities - and their families - navigate all the different types of services that may be available to meet the person's needs. Case managers work at Community Centered Boards in local communities throughout Colorado and provide a variety of case management activities, such as:

- Determining eligibility for services
- Describing services and how to apply
- Helping determine your needs
- Working together with you and others to develop an individualized plan
- Providing ongoing monitoring and support of your services



What Do You Need To Bring To Apply For Services? _____

Your case manager will help identify what information to gather and who to ask for the information needed. In general, it helps to bring information about the applicant, such as:

- Social security number
- Medical insurance information / Medicaid Card
- Medical history
- Any developmental history
- School records
- Any psychological testing (cognitive IQ testing)
- Other evaluations, such as occupational, physical, and or speech therapy

Mostly, the CCB will look at intelligence tests and tests of skills and abilities, but they will also look at medical information, history, and anything else that would show that a disability exists or, if a child is at risk for disability or delay. If the information is not readily available, it would be helpful to bring the name and address of the school or agency that may have the information. Your case manager will ask you to sign a release of information allowing the schools or agencies you have previously used to send the CCB the information they have. If needed, your case manager will also help you make arrangements to have other testing completed.

How Long Before A Decision is Made? _____

Once the Community Centered Board receives your application for services and all other necessary information eligibility will be determined within 30 days of that time. Your family's assistance in gathering this necessary information will help ensure a timely decision.



A letter will be mailed to you within seven days after an eligibility determination is made.

What If Eligibility Is Denied? _____

You have the right to appeal a decision if you or your child is ineligible. Your letter will explain what steps you must take if you disagree with the decision.

What If Eligibility Is Approved? _____

Within 30 days after eligibility has been approved, you will meet with your case manager and others to develop an Individualized Plan (IP), specific to your needs. You will talk about what services you need and what you want to happen in your life. The IP will identify strengths and challenges. Based on how you want your needs addressed, your case manager will recommend and explain the types of services that are available. However, there may be a waiting list for these services. See below for more information regarding waiting lists. Your Individualized Plan will be updated at least annually, and can be updated throughout the year as needed.



If your child is still in school, your annual review may occur along with your IEP (Individual Education Plan) meeting. For children ages birth to 3 years, the plan is known as an Individualized Family Service Plan (IFSP) and is reviewed at least every six months.

Why Are There Waiting Lists For Services? _____

Services funded through the developmental disabilities system are not an entitlement. Quite simply, the need for developmental disabilities services in Colorado is greater than the amount of funding that is available. This is true for child and adult services.

How Do You Get On A Waiting List? _____

If funding is not available for the type of services that you or your child needs, this will be identified on your IP and you or your child's name will be placed on a waiting list. There are many different types of family situations, so when a name is placed on a waiting list, you will be asked to decide:

- 1) If you would accept services as soon as they become available, or
- 2) If you would accept services at a specific date in the future, or
- 3) If you just want to be on the waiting list in case you should need services someday (i.e. safety net).

Whenever a person is placed on a waiting list, your case manager will work with you or your family to identify other programs and services outside of the developmental disabilities system that might be of help to you.

What Happens When Funding Becomes Available?

When funding becomes available, your case manager will notify you and explain what is available in your local area, and help you learn about your options. If you choose to accept the services offered, your case manager will schedule a meeting to write a new IP or to change your existing IP, detailing the services that are to be provided, who will provide the services, when they will start, and how you would like services provided.

What Types of Services are Offered?

The developmental disabilities system provides a variety of services for adults, such as daily living services in a person's own home, family home, or if needed and desired, in residential settings outside of the family home. Services and supports are also provided to assist all persons (adults and children) to access their community. Other services are available for children, such as early intervention. The design of these services and supports are intended to provide for self-determination and individual choice. In addition to the program services described on the following pages, each person will be provided with case management services.

Tips When Selecting Services

- What are the most urgent needs you have and are they clearly defined in your Individualized Plan?
- What is your intended outcome for receiving a particular service?
- What services will help with your daily schedule?
- Do you have different service needs for different times of the year?
- Does the service agency share similar values and philosophy about how services should be provided?
- What is the track record for the service provider you are considering?
- What back-ups are needed if a scheduled service isn't provided or if you have an emergency?
- How are services monitored and by whom?
- Is service delivery transparent (is information freely shared)?
- Are other families who use the agency satisfied?



What Services are for ADULTS (age 18 and older)?

Services for adults in the developmental disabilities system are administered under two broad funding blocks known as Comprehensive Services and Supported Living Services.

Comprehensive Services (Adults)

provide 24-hour residential care, employment and other day type services and transportation. Comprehensive Services is an all inclusive program that is designed to ensure that all identified needs in your Individualized Plan (IP) are met. You cannot be living with your family if you receive Comprehensive Services.

The service provider is responsible for living arrangements which range from host homes settings with 1-2 persons, to individualized settings of 1-3 persons, up to group settings of 4-8 persons. You may be responsible to pay for a portion of the cost depending on your monthly income.



Microboard option for Comprehensive Services

A Microboard is an agency created by family members or guardians, incorporated to do business in the State of Colorado, whose scope is solely to provide Comprehensive Services to one person with a developmental disability. The person cannot be living with the family. You and/or your representatives can directly control implementation, such as who is hired or fired, what types of incentives are provided to retain good employees, what type of training is required, or oversight regarding the quality of the services. For more information, contact your CCB.

Supported Living Services (Adults)

are used to supplement already available supports for adults who either can live independently with limited supports or, if you need extensive support, are principally supported from other sources, such as your family.

Supported Living Services (SLS) provide a variety of services, such as personal care (like eating, bathing and dressing) or homemaking needs, employment or other day type services, accessing his or her community, help with decision-making, assistive technology, home modification, professional therapies, transportation, and twenty-four hour emergency assistance. Supported Living Services are not intended to meet all needs. Service needs and the level of support are prioritized within your overall Individualized Plan (IP).

You are responsible for your living arrangements which can include living with family or in your own place. Up to three persons receiving services can live together. You or your family member cannot require 24-hour supervision paid for only by SLS.

For more information on any of these services or programs, contact your local CCB. There is also a publication called, A General Comparison of Community Services, which provides greater detail about these services. This is available through the CCB (see page 21) or contact DDDS (303/866-7450) for a copy.

What Services are for CHILDREN (Birth thru 17)?

Services for children with developmental disabilities and delays are administered by the Department of Human Services, Children's Health and Rehabilitation Services. Children's services include three programs: Early Intervention Services (EI), the Family Support Services Program (FSSP), and the Children's Extensive Support (CES) waiver.



Early Intervention Services (EI)

are provided to infants and toddlers (birth through age 2) to enhance their development and learning as well as to enhance the capacity of families to support their children's well-being. These services are provided in collaboration between CCBs, school districts and Early Childhood Connections (ECC) and Health Departments.

These partners work together to provide a combination of supports. Early Intervention services may include the services listed below, but are not limited to these services:

- | | |
|-----------------------------------------------|----------------------------|
| ■ assistive technology devices and services | ■ psychological services |
| ■ audiology | ■ service coordination |
| ■ family training, counseling and home visits | ■ social work services |
| ■ health services | ■ specialized instruction |
| ■ nutrition services | ■ speech language services |
| ■ nursing services | ■ transportation |
| ■ occupational therapy, physical therapy | ■ vision services |



Family Support Services Program (FSSP)

is intended to support families who have children with developmental disabilities or delays with costs that are beyond those normally experienced by other families. The primary purpose of the FSSP is to support children with developmental disabilities or delays remaining within their own nurturing family setting and prevent out-of-home placements.

The services paid for by the FSSP funds include, but are not limited to:

- ◆ Respite care - temporary care of the person with the developmental disability
- ◆ Professional services - counseling, occupational/speech/physical therapies
- ◆ Medical and dental expenses - not otherwise covered by other sources such as Medicaid or private insurance
- ◆ Transportation - mileage costs related to providing care and support
- ◆ Assistive technology - mobility aids, adaptive equipment, communication devices
- ◆ Home/vehicle modification - ramps, lifts, widened door frames
- ◆ Other individual expenses - special diets, specialized clothing

Additionally, families eligible for FSSP may access the Family Support Loan Fund. This fund provides short term, low interest rate loans to families so that they can obtain the services necessary to maintain their member with a developmental disability at home.



Children's Extensive Support (CES)

is a program that provides Medicaid-funded services and supports to children with developmental disabilities or delays who have the most intensive behavioral and/or medical needs and are at high risk of out-of-home placement. Eligible children demonstrate a behavior or have a medical condition that requires direct human intervention, more intense than a verbal reminder, re-direction or brief observation of medical status, at least once every two hours during the day and on a weekly average of once every three hours during the night. The behavior or medical condition must be considered beyond what is typically age appropriate and be due to one or more of the following conditions:

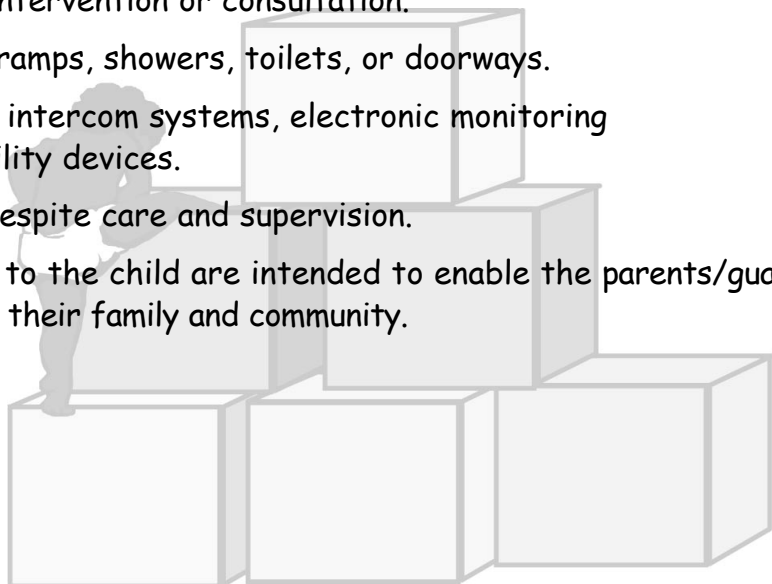
- (a) A significant pattern of self-endangering behavior(s) or medical condition which, without intervention will result in a life threatening condition/situation.
- (b) A significant pattern of serious aggressive behaviors toward self, others or property.
- (c) Constant vocalizations (on average of fifteen (15) minutes of each waking hour), such as screaming, crying, laughing, or verbal.

The child may already be Medicaid eligible on their own, if their parent's income meets the regular Medicaid income criteria, or a child may become eligible for Medicaid through CES because CES allows the child's income and financial resources to be considered separate from their parent's income.

The main areas of services and supports available are:

- Personal assistance services, such as assistance with personal hygiene, eating/drinking and toileting.
- Professional services, such as therapies, training, evaluation and assessments that otherwise are not covered by other sources.
- Behavioral services, such as intervention or consultation.
- Home modifications, such as ramps, showers, toilets, or doorways.
- Assistive technology, such as intercom systems, electronic monitoring devices for the home or mobility devices.
- Child care services, such as respite care and supervision.

These intense services and supports to the child are intended to enable the parents/guardian to keep their child at home as part of their family and community.



Legal Rights

You are guaranteed the following rights.



Right to an individualized plan Developed jointly by you, your case manager, parent/guardian, and other professionals working with you on an annual basis (or more frequently if applicable).



Right to medical care & treatment For treatment of ailments or prevention of illness and to be free from unnecessary or excessive medication. Medication shall not be used for convenience of staff, for punishment, as a substitute for treatment, or in quantities that interfere with treatment. You will not be subjected to experimental research or hazardous treatment without your consent. You will not have organs removed for transplant without your consent.



Right to humane care & treatment All agencies shall prohibit mistreatment, abuse, neglect and exploitation in any form. Agencies shall provide a humane physical environment and qualified staff in sufficient numbers. Seclusion shall not be employed. Time out may be utilized only under close and direct professional supervision. Behavior modification using noxious and aversive stimuli is prohibited. Physical restraint shall be employed only when absolutely necessary to protect you from injury or to prevent injury to others. A record shall be kept of all physical injuries, incidents, and uses of restraints.



Right to religious belief, practice, and worship You have the right to opportunities for worship not limited for staff convenience or preference. You are not required to perform any act contrary to your religious belief. You can not be coerced into engaging in or refraining from religious activity.



Right to communication and visits You have the right to send/receive unopened mail, have reasonable access to telephones, and meet and interact with visitors and community at large. Close relatives, guardians, and authorized representatives are allowed to visit at reasonable hours without notice. Policies and procedures may not prohibit the right to sexual interaction based on individual choice.



Right to fair employment practices You will not be required to perform labor, but may do so voluntarily. You will not be able to provide training and supervision and care to other persons without training, supervision, and reimbursement. Vocational training without compensation may not exceed 3 months. You may perform housekeeping tasks if part of your IP. Payment shall not be collected to offset the cost of providing employment services.



Right to vote You will be assisted with registration & voting as needed.



Right to a record Your written consent is required to access your file, as your file is not public record.



Right to personal property You have the right to possess and use your clothing & personal effects. You have the right to manage your funds unless your IP documents and justifies limitation. Items belonging to you cannot be taken away, removed, or withheld by the provider or staff.



Right to establish a committee to represent your interests and influence the agency You are assured access to the Board of Directors. You may not be discriminated against as a result of your attempts to advocate with the agency.



Right to notification You have the right to notification in a language you can understand, to have rules and regulations, and rights explained, as well as the right to an authorized representative.



Right to be free of discrimination You have the right to be free of discrimination due to the fact that you are receiving services.



Right to give consent for treatment There are three elements of consent that must be present - capacity to understand, information about the treatment, and **to voluntarily participate**. You have the right to give your consent for contracts, medical treatment, admission to programs, diagnosis, evaluation and screening activities and behavioral treatment.



Right to have any mistreatment, abuse, exploitation or neglect investigated You have the right to have all actual or suspected incidents reported immediately to the agency administrator or designee. All agency staff should be aware of their obligations to report: child abuse and neglect, crimes, and adult abuse pursuant to Colorado Statutes.

**You cannot be treated differently simply
because you have a developmental disability!**

Who Can Help Protect Your Rights?

Colorado has a strong advocacy network; any or all of the following resources can be used to assist you.

Internal to your CCB

Case Manager

Your Case Manager is there to work on your behalf and to protect your rights and interests. Anytime you have a question or a concern about the developmental disabilities system or alternative systems you can ask your case manager for help.

Human Rights Committee (HRC)

The purpose of the Human Rights Committee (HRC) is to safeguard the rights of persons receiving services. All CCBs have an HRC. The HRC is an advisory committee that reports to the CCB Board of Directors, and is comprised of professionals not employed by the CCB.

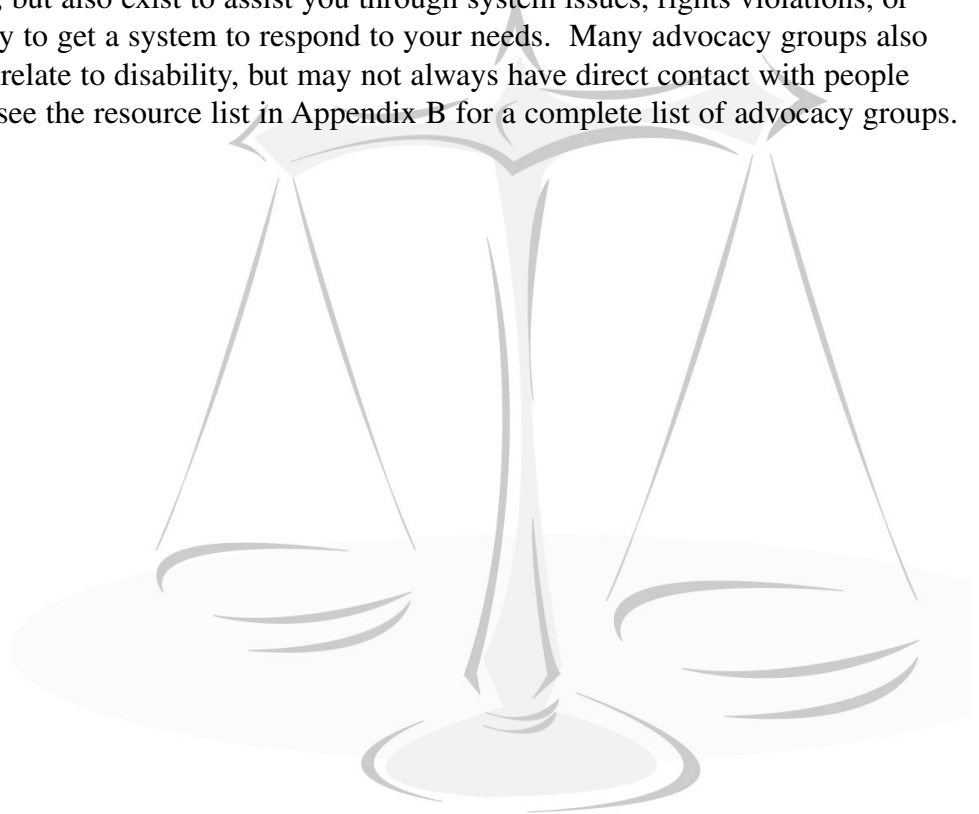
External to your CCB

The Legal Center for People with Disabilities and Older People

The Legal Center protects and promotes the rights of persons with disabilities in Colorado. This is accomplished by the effective use of legal expertise through direct representation, education, and legislative analysis. The Legal Center was designated by the Governor in 1977 to serve as Colorado's protection and advocacy system for persons with developmental disabilities, as provided by federal law.

Advocacy groups

Advocacy groups are different from support groups in that they are there not only for information and referral to appropriate supports, but also exist to assist you through system issues, rights violations, or appeals which may be necessary to get a system to respond to your needs. Many advocacy groups also work on policy issues as they relate to disability, but may not always have direct contact with people who receive services. Please see the resource list in Appendix B for a complete list of advocacy groups.



What if You are Dissatisfied with the Way Things are Going?

Conflict Resolution Procedures

Every Community Centered Board and Program Approved Service Agency have procedures for resolving any conflicts that arise if you are dissatisfied with services or their decisions or actions. These conflict resolution procedures must be stated in writing in easily understandable language. Interpretation in other languages should also be available. The Conflict Resolution Procedures will be stated and given to you in writing when you apply for services. If you do not receive these procedures in writing, ask for them. If your CCB does not provide them to you upon your request, you can contact the Division of Developmental Disabilities Services (DDDS): 303-866-7450.

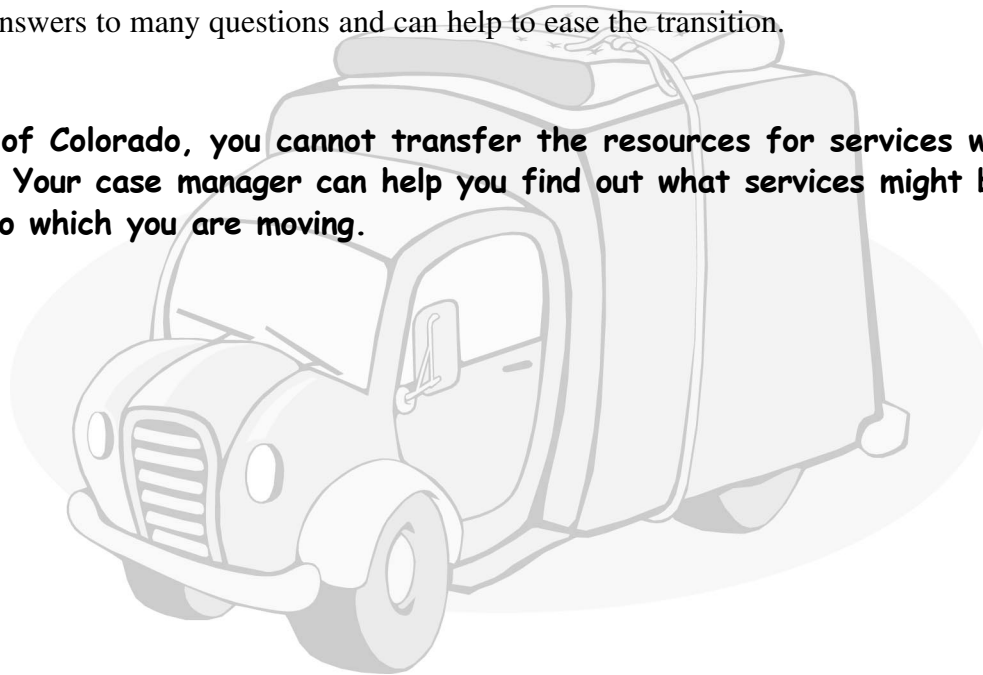
What If Services Need to be Changed?

The services that you receive will be identified in your Individualized Plan (IP). If you want to change these services, you must contact your case manager to discuss your options. If your services are to be changed, reduced or delivered in a more restrictive setting than stated in your Individualized Plan, you must be notified in writing at least 15 days before that change is to be made. If services are being changed and you don't want them to change, you have the right to appeal such changes. Your services will not change during an appeal process unless your health & safety are at risk.

What if you want to move?

If you need to change services because you are moving to another part of Colorado, it is possible that funding will continue to be available. However, there are many issues that should be considered before the move, such as availability of service providers in the new area and the types of services available. Your case manager can help find the answers to many questions and can help to ease the transition.

If you are moving out of Colorado, you cannot transfer the resources for services with you to another state. Your case manager can help you find out what services might be available in the state to which you are moving.



What Do You Need to Know About Transition?

Ages 3 ↓

5 ↓

14 ↓

18 ↓

21 ↓

55 ↓

For persons with developmental disabilities, there are several key times when services or benefits are impacted by the age of the person. In general, the person's age will determine what criteria are used for eligibility, what types of new services may be available or are no longer available, and what benefits may be available. While it is not possible to include all potential impacts, some of the most common impacts for persons with developmental disabilities are described below.

Any Age → If you or your child has a developmental disability, there are several commonly used services and benefits that you may want to look into, including but not limited to:

- SSI (Supplemental Security Income) is a disability benefit available through the Social Security Administration (SSA, 1-800-772-1213 or www.ssa.gov). SSI eligibility is based on two main factors: 1) whether a person has a significant disability that impacts their ability to work, and 2) whether a person meets the financial eligibility requirements. SSI provides a monthly benefit check to help meet daily living expenses.
- Medicaid is a program administered by the Colorado Department of Health Care Policy & Financing (HCPF) that pays for health insurance for some Coloradans who cannot afford it. A person must apply for Medicaid benefits through the local Department of Social/Human Services, even if they are SSI eligible. For the locations and telephone numbers of local sites, see listing on **page 22**, check the Blue Pages (Government) in the telephone book, or call the Customer Service Line at 1-800-221-3943, or www.chcpf.state.co.us.
- EPSDT (Early and Periodic Screening, Diagnosis and Treatment) provides additional Medicaid benefits to children, ages birth to 21. These services are accessed through your primary care physician. For more information, call 1-800-688-7777 or HCPF website www.chcpf.state.co.us.

Age 3 → Early Intervention services end at age three. All infants and toddlers who have been receiving Early Intervention services will have a transition plan that identifies what will happen when he or she turns three. Many (but not all) children will transition to preschool services under public education and an Individualized Education Plan (IEP) will be developed. In preschool, there will likely be less of a family focus and more of a focus on your child's needs. If the infant or toddler has been receiving Early Intervention services because one or both parents have a developmental disability and the child lives with them, and no other disability is present, the child will no longer be eligible for services when they turn three.

Age 5 → Under the age of five, your child may be eligible for Children's Health and Rehabilitation Services (CHRS)-funded services if they have a developmental delay or are at risk of having a developmental disability. At age five, your child must be determined to have a developmental disability. Services will end for those children who do not have a developmental disability. Preschool services from the school district will end, however, depending on your child's IEP, special education services may continue up to age 21.

Age 14 → Under the Individuals with Disabilities Education Act (IDEA) an Individualized Transition Plan will be developed for all students enrolled in special education. The transition planning process should consider what educational needs the student will continue to have in school, in addition to what will happen when he or she transitions from school to adult life.

Age 14 is the earliest a person can apply for Division of Developmental Disabilities Services (DDDS)-funded adult services. Even though services cannot begin until your child is at least 18 years of age, due to waiting lists for these adult services, families are encouraged to apply for services at age 14 and get on the waiting list. This transition planning may help to ensure that funding for DDDS services is available when your child turns 18.

Age 18 → Age 18 is perhaps one of the most important ages for any person. Everyone automatically becomes an emancipated adult under Colorado law. Parents may want to consider guardianship if their son or daughter is not able to make decisions for themselves. It is important to know that emancipation is automatic unless the parent formally goes through a legal process to get guardianship. Guardianship can be obtained through the county Probate Courts or contact the Guardianship Alliance for help (303/423-2898).

At age 18, all adults with a developmental disability, if not already SSI eligible, are encouraged to apply for SSI benefits by contacting the Social Security Administration (1-800-772-1213) and Medicaid benefits (1-800-221-3943).

DDDS-funded services are available for adults, age 18 and older (e.g. Comprehensive Services and Supported Living Services). However, unlike public education, DDDS-funded services are not an entitlement. There are waiting lists for services. When services are available, they can be provided in combination with (but not duplicate) a school program and Vocational Rehabilitation (VR) services.

VR services are also available to explore work opportunities. VR services can begin as early as age 16, if the student is ready for employment services. Eighteen year old students can also enroll in a community college through VR funding between the years of 18 and 21, if their public education in high school is completed.

If your child is enrolled in the Children's Extensive Support program or the Children's HCBS program, these services end at age 18.

If Medicaid eligible, it is recommended that you begin reviewing your child's or your long-term medical and care needs for items that are covered under Early and Periodic Screening Diagnosis and Treatment (EPSDT). At age 21, EPSDT will no longer be available.

If you or your child is still on a waiting list for DDDS-funded services at age 18, you may want to consider applying for the Elderly, Blind and Disabled waiver (1-800-221-3943).

You or your child can register to vote. Males must register for the Selective Service.

Age 21 → Entitlement for Public Education ends.

If the student is Medicaid eligible, general Medicaid benefits will continue, however, EPSDT will no longer be available after their 21st birthday.

Age 55 → Many senior benefits are available to persons 55 and older. There are a number of websites that provide excellent information about senior services, including: Benefits Check Up (www.benefitscheckup.org), The National Council on Aging (202-479-1200, www.ncoa.org) and the American Association of Retired Persons (1-800-424-3410, www.aarp.org).

Appendix A:

COMMUNITY CENTERED BOARDS

Agency name, address, city & telephone number where the main office is located.

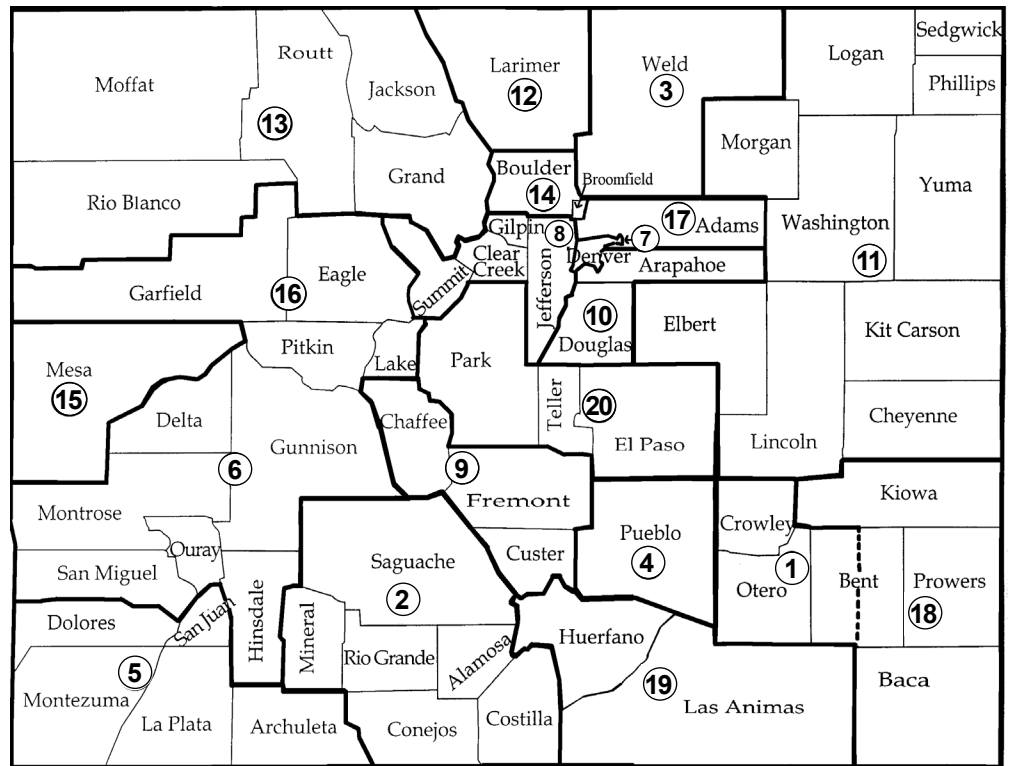
- | | | | |
|--------------------------------------------------------------------------------------------------|----------------|----------------------------------------------------------------------------------------------------------|----------------------------------|
| (1) Arkansas Valley Community Center
1500 San Juan Avenue, La Junta, CO 81050 | (719) 384-8741 | (11) Eastern Colorado Services
617 South 10th Ave., Sterling, CO 8075 | (970) 522-7121 |
| (2) Blue Peaks Developmental Services
703 Fourth Street, Alamosa, CO 81101 | (719) 589-5135 | (12) Foothills Gateway
301 Skyway Drive, Fort Collins, CO 80525 | (970) 226-2345 |
| (3) Centennial Developmental Services
1050 37th Street, Evans, CO 80620 | (970) 339-5360 | (13) Horizons Specialized Services
405 Oak, Steamboat Springs, CO 80477 | (970) 879-4466 |
| (4) Colorado Bluesky Enterprises
115 West 2nd Street, Pueblo, CO 81003 | (719) 546-0572 | (14) Imagine!
1400 Dixon Avenue, Lafayette, CO 80026 | (303) 665-7789 |
| (5) Community Connections
281 Sawyer Drive, #200, Durango, CO 81301 | (970) 259-2464 | (15) Mesa Developmental Services
950 Grand Avenue, Grand Junction, CO 81501 | (970) 243-3702 |
| (6) Community Options
336 South 10th Street, Montrose, CO 81402 | (970) 249-1412 | (16) Mountain Valley Developmental Services
700 Mount Sopris Drive, Glenwood Springs, CO 81602 | (970) 945-2306 |
| (7) Denver Options
5250 Leetsdale Drive, #200, Denver, CO 80246 | (303) 753-6688 | (17) North Metro Community Services
1185 West 124th Ave., Westminster, CO 80234 or | (303) 252-7199
(303) 457-1001 |
| (8) Developmental Disabilities Resource Center
11177 W. 8th Avenue, Lakewood, CO 80215 | (303) 233-3363 | (18) Southeastern Developmental Services
1111 South Fourth Street, Lamar, CO 81052 | (719) 336-3244 |
| (9) Developmental Opportunities
601 Greenwood, Canon City, CO 81215 | (719) 275-1616 | (19) Southern Colorado Developmental Services
1205 Congress Drive, Trinidad, CO 81082 | (719) 846-4409 |
| (10) Developmental Pathways
11111 East Mississippi Ave., Aurora, CO 80012 | (303) 360-6600 | (20) The Resource Exchange
418 South Weber, Colorado Springs, CO 80903 | (719) 380-1100 |

- | | |
|----------------------|-------------------|
| (2) - Alamosa | (18) - Kiowa |
| (17) - Adams | (11) - Kit Carson |
| (except Aurora) | (16) - Lake |
| (10) - Arapahoe | (5) - La Plata |
| (5) - Archuleta | (12) - Larimer |
| (10) - Aurora (City) | (19) - Las Animas |
| (18) - Baca | (11) - Lincoln |
| (1) - Bent | (11) - Logan |
| (14) - Boulder | (2) - Mineral |
| (14) - Broomfield | (15) - Mesa |
| (10) - Chaffee | (13) - Moffat |
| (11) - Cheyenne | (5) - Montezuma |
| (8) - Clear Creek | (6) - Montrose |
| (2) - Conejos | (11) - Morgan |
| (2) - Costilla | (1) - Otero |
| (1) - Crowley | (6) - Ouray |
| (10) - Custer | (20) - Park |
| (6) - Delta | (11) - Phillips |
| (7) - Denver | (16) - Pitkin |
| (5) - Dolores | (18) - Prowers |
| (10) - Douglas | (4) - Pueblo |
| (16) - Eagle | (13) - Rio Blanco |
| (11) - Elbert | (2) - Rio Grande |
| (20) - El Paso | (13) - Routt |
| (10) - Fremont | (2) - Saguache |
| (16) - Garfield | (5) - San Juan |
| (8) - Gilpin | (6) - San Miguel |
| (13) - Grand | (11) - Sedgwick |
| (6) - Gunnison | (8) - Summit |
| (6) - Hinsdale | (20) - Teller |
| (19) - Huerfano | (11) - Washington |
| (13) - Jackson | (3) - Weld |
| (8) - Jefferson | (11) - Yuma |

Who to Contact About More Information

concerning services for adults and children with developmental disabilities.

If you are interested in finding out more about any of these services, please contact the Community Centered Board in your area. The counties are listed to the left alphabetically. Match the number code below with the Community Centered Board listed above.



County Department of Social/Human Services

County	Telephone	Street Address	City	Zip Code
Adams	(303) 287-8831	7190 Colorado Blvd.	Commerce City	80022
Alamosa	(719) 589-2581	610 State Street	Alamosa	81101
Arapahoe	(303) 795-4850	1690 West Littleton Blvd.	Littleton	80120
Archuleta	(970) 264-2182	449 San Juan	Pagosa Springs	81147
Baca	(719) 523-4131	772 Colorado Street	Springfield	81073
Bent	(719) 456-2620	215 2nd Street	Las Animas	81054
Boulder	(303) 441-1000	3400 Broadway	Boulder	80304
Broomfield	(720) 887-2200	#6 Garden Center	Broomfield	80020
Chaffee	(719) 539-6627	641 West 3rd Street	Salida	81201
Cheyenne	(719) 767-5629	51 South 1st	Cheyenne Wells	80810
Clear Creek	(303) 679-2365	Courthouse	Georgetown	80444
Conejos	(719) 376-5455	Courthouse	Conejos	81129
Costilla	(719) 672-4131	123 Gasper Street	San Luis	81152
Crowley	(719) 267-3546	601 Main	Ordway	81063
Custer	(719) 783-2371	205 South 6th Street	Westcliffe	81252
Delta	(970) 874-2030	Courthouse Annex, 560 Dodge	Delta	81416
Denver	(720) 944-3666	1200 Federal Blvd.	Denver	80204
Dolores	(970) 677-2250	420 North Main	Dove Creek	81324
Douglas	(303) 688-4825	101 Third Street	Castle Rock	80104
Eagle	(970) 328-8840	500 Broadway Street	Eagle	81631
Elbert	(719) 541-2369	325 Pueblo Avenue	Simla	80835
El Paso	(719) 636-0000	105 North Spruce	Colorado Springs	80905
Fremont	(719) 275-2318	172 Justice Center Road	Canon City	81212
Garfield	(970) 945-9191	2014 Blake Avenue	Glenwood Springs	81602
Gilpin	(303) 582-5444	2960 Dory Hill Road, Suite 100	Black Hawk	80403
Grand	(970) 725-3331	620 Hemlock	Hot Sulphur Springs	80451
Gunnison	(970) 641-3244	225 North Pine Street, Suite A	Gunnison	81230
Hinsdale	(970) 641-3244	225 North Pine Street, Suite A	Gunnison	81230
Huerfano	(719) 738-2810	121 West 6th Street	Walsenburg	81089
Jackson	(970) 723-4750	P.O. Box 338	Walden	80480
Jefferson	(303) 271-1388	900 Jefferson County Parkway	Golden	80401
Kiowa	(719) 438-5541	1305 Goff Street	Eads	81036
Kit Carson	(719) 346-8732	252 South 14th Street	Burlington	80807
Lake	(719) 486-2088	112 West 5th Street	Leadville	80461
La Plata	(970) 382-6150	1060 East Second Avenue	Durango	81301
Larimer	(970) 498-6300	1501 Blue Spruce Drive	Fort Collins	80524
Las Animas	(719) 846-2276	204 S. Chestnut Street	Trinidad	81082
Lincoln	(719) 743-2404	103 3rd Avenue	Hugo	80821
Logan	(970) 522-2194	508 South 10th Avenue, Suite 2	Sterling	80751
Mesa	(970) 241-8480	2952 North Avenue	Grand Junction	81502
Mineral	(719) 657-3381	1015 6th Street	Del Norte	81132
Moffat	(970) 824-8282	595 Breeze Street	Craig	81625
Montezuma	(970) 565-3769	109 West Main, Room 203	Cortez	81321
Montrose	(970) 249-3401	107 South Cascade	Montrose	81402
Morgan	(970) 542-3530	800 East Beaver Avenue	Fort Morgan	80701
Otero	(719) 383-3100	Courthouse, 3rd & Colorado	La Junta	81050
Ouray	(970) 325-4437	541 4th Street	Ouray	81427
Park	(719) 836-4139	PO Box 1193	Bailey	80421
Phillips	(970) 854-2454	127 East Denver, Suite A	Holyoke	80734
Pitkin	(970) 927-1611	100 Elk Run Drive, suite 122	Basalt	81621
Prowers	(719) 336-7486	1001 South Main	Lamar	81052
Pueblo	(719) 583-6160	212 West 12th Street	Pueblo	81003
Rio Blanco	(970) 878-5011	345 Market Street	Meeker	81641
Rio Grande	(719) 657-3381	1015 6th Street	Del Norte	81132
Routt	(970) 879-1540	136 6th Street	Steamboat Springs	80477
Saguache	(719) 655-2537	605 Christy Avenue	Saguache	81149
San Juan	(970) 387-5631	1557 Greene Street	Silverton	81433
San Miguel	(970) 728-4411	333 West Colorado Avenue	Telluride	81435
Sedgwick	(970) 474-3397	106 West 1st	Julesburg	80737
Summit	(970) 668-4100	37 County Road 1005	Frisco	80443
Teller	(719) 687-3335	740 Highway 24	Woodland Park	80866
Washington	(970) 345-2238	875 East 1st St.	Akron	80720
Weld	(970) 352-1551	315 North 11th Avenue	Greeley	80631
Yuma	(970) 332-4877	340 South Birch Street	Wray	80758

Child Find Directory 2002-2003

ADAMS COUNTY

DISTRICT 1 MAPLETON
(303) 853-1132
(303) 853-1129

DISTRICT 12 NORTHGLENN
(720) 872-5400

DISTRICT 14 COMMERCE CITY
(720) 322-8129 ext. 8130

DISTRICT 27J BRIGHTON
(303) 655-2945

DISTRICT 50 WESTMINSTER
(303) 428-1560

ARAPAHOE COUNTY

DISTRICT 1 ENGLEWOOD
(303) 781-7585

DISTRICT 2 SHERIDAN
(720) 833-6636

DISTRICT 5 CHERRY CREEK
(720) 747-2906

DISTRICT 6 LITTLETON
(303) 347-3469

DISTRICT 28J AURORA
(303) 363-0484

BOULDER COUNTY

**DISTRICT RE-1J
ST. VRAIN VALLEY**
(303) 772-7700

**DISTRICT RE-2
BOULDER VALLEY**
(303) 447-5263
(303) 447-5078

DELTA COUNTY

DISTRICT 50J DELTA
(970) 874-7607

DENVER COUNTY

DISTRICT 1 DENVER
(303) 405-6601

DOUGLAS COUNTY

DISTRICT RE-1 CASTLE ROCK
(303) 471-7175

EL PASO COUNTY

All birth-three referrals
(719) 577-9190

DISTRICT 2 HARRISON
(719) 579-3240
(719) 630-1525

DISTRICT 3 WIDEFIELD
(719) 391-3063

DISTRICT 8 FOUNTAIN
(719) 382-1430
New Families: ext. 7450

**DISTRICT 11
COLORADO SPRINGS**
(719) 328-2875

DISTRICT 20 ACADEMY
(719) 260-6600

DISTRICT 49 FALCON
(719) 494-8841

ELBERT COUNTY

DISTRICT C-1 ELIZABETH
(303) 646-1848

Member Districts:
Phillips Re-1J, Re-2J
Sedgwick Re-1, Re-3
Washington R-1, R-3, 101
Yuma R-J1, R-J2

FREMONT COUNTY

DISTRICT RE-1 CANON CITY
(719) 276-5700

GUNNISON COUNTY

**DISTRICT RE-1J
GUNNISON WATERSHED**
(970) 641-7751

JEFFERSON COUNTY

DISTRICT R-1 JEFFCO
(303) 982-7247

LARIMER COUNTY

All birth - three referrals
(970) 229-0224

**DISTRICT R-1
POUDRE/FORT COLLINS**
(970) 490-3204

**DISTRICT R-2J
THOMPSON/LOVELAND**
(970) 613-6280

**DISTRICT R-3
PARK/ESTES PARK**
(970) 586-9529 ext. 3178

After Hours:
(970) 586-2361 x3008

LOGAN COUNTY

**DISTRICT RE-1
VALLEY/STERLING**
(970) 522-0792

MESA COUNTY

**DISTRICT 51 MESA COUNTY/
GRAND JUNCTION VALLEY**
(970) 243-2916

MOFFAT COUNTY

**DISTRICT RE-1
MOFFAT COUNTY/CRAIG**
(970) 824-7457 ext. 24

MONTROSE COUNTY

DISTRICT RE-1J MONTROSE
(970) 249-2405

MORGAN COUNTY

DISTRICT RE-3 FORT MORGAN
(970) 867-2998 ext. 301

PUEBLO COUNTY

DISTRICT 60 PUEBLO (URBAN)
(719) 544-8633

DISTRICT 70 PUEBLO (RURAL)
(719) 542-0220 ext. 3032

WELD COUNTY

DISTRICT RE-4 WINDSOR
(970) 686-8031

DISTRICT 6 GREELEY
(970) 348-6248
(970) 348-6212

**FT. LUPTON/KENNESBURG
CONSORTIUM**

DISTRICT Re-8 FT. LUPTON
(970) 222-8813

DISTRICT Re-3(J) KEENESBURG
(303) 536-2000

BOARDS OF COOPERATIVE (EDUCATIONAL) SERVICES (BOCES)

CENTENNIAL BOCES
(970) 352-7404
Denver Line: (303) 629-0994

Member Districts:

Weld Re-1, Re-2, Re-5J, Re-7, Re-9,
Re-10, Re-11, Re-12

EAST CENTRAL BOCES

(719) 775-2342 ext. 113
(719) 775-2342 ext. 153

Member Districts:

Adams 29J, 31J; Arapahoe 26J, 32J;
Cheyenne R-1, RE-5; Elbert 300,
C1; Kit Carson C-20, R-23, R-4,
R-5, RE-6J; Lincoln C113,
Re 4J, Re 23; Park 1
Washington R-104, R-2

MOUNT EVANS BOCES

(303) 567-9733

Gilpin County

(303) 582-3444 ext. 141

Park County/ Platte Canyon School Dist.

(303) 838-4888 ext. 355

Member Districts:

Clear Creek RE-1,
Gilpin RE-1, Platte Canyon

MOUNTAIN BOCES

(719) 486-2603

Chaffee County/Salida,

Buena Vista

(719) 539-4510 - (719) 395-8493

Eagle County

(970) 328-6015

Garfield County

Garfield #16/Parachute
(970) 285-7561

Roaring Fork Re-1/Glenwood

Springs, Basalt, Carbondale

(970) 384-6000 ext. 6010

Garfield Re-2/Silt, Rifle, Newcastle

(970) 625-7944

Lake County

(719) 486-5950

Park County

(719) 836-4418

Pitkin County/Aspen

(970) 920-5420

Summit RE - 1

(970) 668-3282

Dillon Valley/Silverthorne

(970) 468-6836

Dillon/Keystone

(970) 513-0083

Member Districts:

Chaffee R-31, R-32(J); Eagle Re-50;
Garfield Re-1, Re-2, 16;

Lake R-1; Park Re-2; Pitkin 1;

Summit Re-1

NORTHEAST COLORADO BOCES

(970) 848-3884

Member Districts:

Crowley RE-1; Custer C-1;
Fremont Re-2, Re-3; Huerfano Re-1,
Re-2; Las Animas 1, 2, 3, 6, 82

Otero R-4J, 3J; Fowler, Manzanola

NORTHWEST COLORADO BOCES

(970) 879-0391 - (800) 748-2115

Member Districts:

Grand 1, 2; Jackson R-1;

Routt Re-1, Re-2, Re-3

PIKES PEAK BOCES

(719) 570-7474

Lewis Palmer School District

(719) 559-0800

Manitou Springs School District

(719) 685-2024

Cheyenne Mountain School District

(719) 327-2823

Cripple Creek School District

(719) 689-9230

Woodland Park School District

(719) 686-2050

Member Districts:

Elbert 100J, 200, C2;

El Paso RJ1, 12, 14, 22, 23 Jt, 28,

38, 54 Jt, 60 Jt;

Teller Re-1, RE-2

Associate Member Districts:

El Paso 2, 3, 8

RIO BLANCO BOCES

(970) 675-2820

SAN JUAN BOCES

(970) 247-3261 ext. 151

Member Districts:

Archuleta 50 Jt; La Plata 9-R,

10 Jt-R, 11 Jt; San Juan 1

SAN LUIS VALLEY BOCES

(719) 589-5851

Member Districts:

Alamosa Re-11J, Re-22J; Conejos

RE1J, 6J, Re 10;

Costilla R-1, R-30; Mineral 1;

Rio Grande C-7, C-8, Re-33J;

Saguache Re 1, 2, 26Jt

SANTA FE TRAIL BOCES

(719) 383-2623

Member Districts:

Bent RE-1; Otero R-1, R-2, 31, 33

SOUTH CENTRAL BOCES

(719) 738-1701

Fowler Office (719) 263-4120

Florence Office (719) 784-4164

Walsenburg (719) 738-1701

Trinidad Office (719) 846-4484

SOUTH PLATTE VALLEY BOCES

(970) 867-8297

Member Districts:

Morgan Re-2(J), Re-20(J), Re-50 (J)

SOUTHEASTERN BOCES

(719) 336-9046 ext. 40

Member Districts:

Baca RE-1, RE-3, RE-4, RE-5,

RE-6; Bent RE-2; Kiowa Re-1, Re-2;

Las Animas 88; Prowers Re-1, Re-2,

Re-3, RE-13J

SOUTHWEST BOCES

(970) 565-8411

Member Districts:

Dolores Re-1;

Montezuma Re 1, RE 4A, Re 6

UNCOMPAHGRE BOCES

(970) 626-2977

Member Districts:

Ouray R-1, R-2; Ridgway; San

Miguel R-1, R-2J; Montrose Re-2

COLORADO SCHOOL FOR

THE DEAF & THE BLIND

(719) 578-2177

GLOSSARY OF TERMS

A.A.M.R. (American Association on Mental Retardation) - A nationwide professional organization working together to meet the needs of persons with mental retardation.

ADA (Americans with Disabilities Act) - Federal legislation regarding rights and protections for persons with developmental disabilities.

Arc of Colorado - State organization that serves as an advocacy group for persons with developmental disabilities of all ages.

Authorized Representative - An individual designated by the person receiving services - or by the parent or guardian - to assist the recipient to acquire or use services.

Autism - A complex neurological disorder that appears during the first three years of life and affects the functioning of the brain in the areas of social interaction and communication skills.

CACCB (Colorado Association of Community Centered Boards) - Statewide association of the 20 CCBs in Colorado.

CAPRA - Colorado Association of Private Resources Agencies.

Case Management Services - Services provided by CCBs to assist in eligibility determination, IP development, the coordination of services and evaluating services with maximum participation by the individual and his or her parents, guardian or authorized representative.

Service Area - The geographical area served by a designated CCB.

CCB (Community Centered Board) - A private non-profit organization which is authorized to determine the eligibility of individuals with developmental disabilities within a specific geographical area; provides case management and authorized services.

CDE - Colorado Department of Education

CDHS - Colorado Department of Human Services

CDPHE - Colorado Department of Public Health and Environment

CDHCPF - Colorado Department of Health Care Policy and Financing (Single State Medicaid agency in Colorado)

CES - Children's Extensive Support (Medicaid waiver)

CHRS - Children's Health and Rehabilitation Services

CMS - Centers for Medicare and Medicaid Services (federal agency responsible for Medicaid funding)

Comprehensive Services - A program that provides 24-hour supervision and other supports, training and habilitation based on an Individualized Plan (IP) (Medicaid Waiver and State Funding)

C.P. (Cerebral Palsy) - Cerebral palsy is a term used to describe a group of chronic conditions affecting body movement and muscle coordination. It is caused by damage to one or more specific areas of the brain, usually occurring during fetal development; before, during, or shortly after birth; or during infancy.

C.R.S. 27-10.5 - Colorado Revised Statute regarding care and treatment of persons with developmental disabilities.

DDDS - Division of Developmental Disabilities Services (State office)

Developmental Disability - A disability that is manifested before the person reaches twenty-two years of age, which constitutes a substantial disability to the affected individual, and is attributable to mental retardation or related conditions which include cerebral palsy, epilepsy,

autism, or other neurological conditions when such conditions result in impairment of general intellectual functioning or adaptive behavior similar to that of a person with mental retardation. Unless otherwise specifically stated, the federal definition of "developmental disability" found in 42 U.S.C. sec. 6000, et seq., shall not apply. (Community centered boards are responsible for determination of a developmental disability.)

- Adaptive behavior means that the person has overall adaptive behavior which is significantly limited in two or more skill areas (communication, self-care, home living, social skills, community use, self-direction, health and safety, functional academics, leisure, and work), as measured by an instrument which is standardized, appropriate to the person's living environment, and administered and clinically determined by a qualified professional.
- Similar to that of a person with mental retardation, in regard to adaptive behavior, means that a person's adaptive behavior limitations are a direct result of or are significantly influenced by the person's substantial cognitive deficits and may not be attributable to only a physical or sensory impairment or mental illness.

Developmental Delay - means the slowed or impaired development of a child who meets one or more of the following:

1. A child who is less than five (5) years of age at risk of having a developmental disability because of the presence of one or more of the following:
 - a) Chromosomal conditions associated with mental retardation,
 - b) Congenital syndromes and

- conditions associated with delay in development,
 - c) Metabolic disorders,
 - d) Prenatal and perinatal infections and significant medical problems,
 - e) Low birth weight infants weighing less than 1200 grams, or
 - f) Postnatal acquired problems known to result in significant developmental delays.
2. A child less than five (5) years of age who is significantly delayed in development in one or more of the following areas:
- a) Communication,
 - b) Adaptive behavior,
 - c) Social-emotional,
 - d) Motor,
 - e) Sensory, or
 - f) Cognition.
3. A child less than three (3) years of age who lives with one or both parents who have a developmental disability.

Down Syndrome - A condition of mental retardation resulting from chromosomal abnormalities.

DSS - County Department of Social/Human Services

DVR - Division of Vocational Rehabilitation Services

EBD - Elderly, Blind and Disabled Waiver (waiver program available through HCPF)

ECC - Early Childhood Connections (applies to infants and toddlers birth-2, a.k.a. Part C, CDE is the lead agency)

EI - Early Intervention Services

EPSDT - Early and Periodic Screening, Diagnosis and Treatment

(applies to Medicaid recipients birth through age 20)

FSP - Family Support Plan (applies to Family Support Services)

FSSP - Family Support Services Program

Guardian - A person appointed by the court to be a substitute decision-maker for the person receiving services. The powers of a guardian are determined by a judge and may be limited to certain aspects of the person's life.

HCB-DD - Home and Community-Based Services for persons with Developmental Disabilities, also known as Comprehensive Services.

HCBS - Home and Community-Based Services (Medicaid funding source for Waiver programs)

HCP - Health Care Program for children with special needs

Host Home Program - Uses sponsoring families to accept no more than two non-related individuals into their homes for personalized living with supervision.

HRC - (Human Rights Committee) - Committee established by Community Centered Boards and Regional Centers to safeguard the rights of persons receiving services.

HUD - Housing and Urban Development (section 8 provides rental assistance)

ICF-MR - Intermediate Care Facility for the Mentally Retarded

IDEA - Individuals with Disabilities Education Act (federal education legislation)

IDT (Interdisciplinary Team) - The team of people who help develop an Individualized Plan (IP). Generally includes the person receiving services,

parents or guardian of a minor, a guardian or an authorized representative, as appropriate, the person who coordinates services and supports, and others as determined by such person's needs and preference.

IFSP (Individualized Family Service Plan) - A plan written for each infant or toddler receiving early intervention services (birth through age 2).

IEP (Individualized Education Plan) - An educational plan written by a multidisciplinary team specifically for each student receiving special education services (ages 3-21).

Intermediary Service

Organizations (ISO) - agencies that are used in self-determination programs to provide administrative and technical support as the employer of record for persons who want to directly hire and fire staff to provide services.

IP (Individualized Plan) - A written plan designed by an interdisciplinary team to identify the total needs of a person receiving services and, the services required to meet those needs.

IQ (Intelligence Quotient) - A derived score from an intelligence test that provides information as to how an individual's functioning compares to other individuals of the same age.

IRWE - Impairment Related Work Expenses (applies to SSA benefits)

ISSP - Individual Service and Support Plan (documents a specific methodology of intervention)

JBC (Joint Budget Committee) - Legislative committee of the state General Assembly responsible for expenditure of state funds.

LRE (Least Restrictive Environment) - The most productive school placement for an individual and one that is as close as possible to a "normal"

situation and yet can still address that person's needs. Such placement should be determined from a full array of services and can include institutional placement, special schools, special classes, resource rooms or regular classroom placement.

Medicaid - A program authorized under Title XIX of the Social Security Act that provides health care assistance to qualified individuals. The program is funded by both federal and state monies, but is administered by each state.

Medicare - A federal health insurance program run by the federal Centers for Medicare and Medicaid Services (CMS) which includes both hospital and medical insurance.

MR (Mental Retardation) - Mental retardation manifests before age 18 refers to substantial limitations in present functioning. It is characterized by:

- Significantly subaverage intellectual functioning, existing concurrently with;
- Related limitations in two or more of the following applicable adaptive skill areas:
 - Communication
 - home living
 - community use
 - health and safety
 - leisure
 - self-care
 - social skills
 - self-direction
 - functional academics
 - work

MSO - Managed Service Organization (applies to CCB functions)

OBRA - Omnibus Budget Reconciliation Act (1987 applies to eligible people moving into, from, or residing in nursing facilities.)

OBSS - OBRA Specialized Services

PASA (Program Approved Service Agency) - A private organization approved by Developmental Disabilities Services to provide services.

PASS - Plan to Achieve Self-Support (applies to SSA benefits)

PETI - Post Eligibility Treatment of Income (applies to Medicaid programs, involves the portion of financial responsibility of the person)

Positive Behavioral Supports - person-centered approaches to influencing behavior based on supportive strategies, such as understanding the reason or communicative intent of difficult actions, and making cooperative efforts to teach other ways to meet the same need or communicate the same message, making useful environmental adaptations, assuring helpful and respectful interaction styles, and utilizing the intrinsic motivations of individual to do the safe and appropriate thing.

PPOR - Per Pupil Operating Revenue (applies to student funding for public education)

RC (Regional Center)- State-operated 24-hour residential and day program services (represents the most restrictive setting)

RPC (Referral and Placement Committee) - A committee established by a CCB that makes referral and placement recommendations for persons receiving services.

Section 504 - Part of the Vocational Rehabilitation Act that is generally referred to as the civil rights clause for the handicapped.

SLS (Supported Living Services) - A program that provides services based on an Individualized Plan (IP) that supplement already available supports for adults who either can live independently with limited supports or who, if they need extensive support, are principally supported from other sources, such as their family. (Medicaid Waiver and State Funding)

SSA - Social Security Administration

SSDI - Social Security Disability Insurance (disability benefits through SSA)

SSI - Supplemental Security Income (disability benefits through SSA)

Supported Employment - Paid employment for adults with developmental disabilities who, without long-term support, are not likely to succeed in a regular job.

300% rule - Three times the current monthly SSI benefit (e.g. 2003 - SSI amount \$552 x 3 = \$1,656)

Appendix B:

Common Resources and Links

Below are a few of the more common resources and links that are used by persons with developmental disabilities in Colorado. This is only a starter list. Many times, from one of these sources you will be able access information about additional services. The items provided are for informational purposes only. A resource or link does not constitute an endorsement of content, viewpoint, policies, products, or services.

Advocacy Groups

The Arc of Colorado (303) 864-9334 1-800-333-7690 www.thearcofco.org	Autism Society of America (CO) (720) 214-0794 www.autismcolorado.org	Citizens Advocate Office 1-800-283-7215 www.colorado.gov	The Colorado Cross-Disability Coalition (303) 839-1775 www.colorado2.com/ccdc	Colorado Developmental Disabilities Council (720) 941-0176 www.cdhs.state.co.us/opi/cddpc
Family Voices 1-800-881-8272 (CO) 1-888-835-5669 (Ntl.) www.familyvoices.org	The Legal Center for People with Disabilities and Older People (303) 722-0300 1-800-288-1376 www.thelegalcenter.org	Mile High Down Syndrome Association (303) 797-1699 www.mhdsa.org	Parent to Parent (719) 336-2749 www.p2p-co.org/	Peak Parent Center (719) 531-9400 1-800-284-0251 www.peakparent.org
Speaking for Ourselves (contact Arc of CO) (303) 864-9334 1-800-333-7690 www.thearcofco.org	Support Groups (An Internet Link) www.supportpath.com	University Centers for Excellence in Developmental Disabilities (JFK Partners) (303) 864-5266 www.jfkpartners.org	Disability Rights Education and Defense Fund (510) 644-2555 www.dredf.org	World Institute on Disability (510) 763-4100 www.wid.org

Assistive Technology

AbilityHub 1-802-775 1993 www.abilityhub.com	ABLEDATA 1-800-227-0216 www.abledata.com	Colorado Assistive Technology Partners (303) 315-1280 (800) 255-3477 www.uchsc.edu/atp	The Disability Resources Monthly (631) 585-0290 www.disabilityresources.org	Family Center on Technology and Disability 1-800-USA-5UCP www.fctd.ucp.org/fctd/aboutfctd.htm
-------------------------------------------------------------------------------------------------------	-------------------------------------------------------------------------------------------------	-----------------------------------------------------------------------------------------------------------------------------------------------	-------------------------------------------------------------------------------------------------------------------------------------------	-------------------------------------------------------------------------------------------------------------------------------------------------------------------------

Dental Services

Children's Hospital Dental Clinic (303) 861-6788 1-800-624-6553 www.tchden.org	Dept. of Health Care Policy and Financing (Medicaid) (303) 866-3513 1-800-221-3943 www.chcpf.state.co.us	Kids in Need of Dentistry (KIND) (303) 733-3710 1-877-544-KIND www.kindsmiles.org	National Foundation of Dentistry for the Handicapped (303) 534-5360 www.nfdh.org
------------------------------------------------------------------------------------------------------------------------------------	---------------------------------------------------------------------------------------------------------------------------------------------------------------------	-------------------------------------------------------------------------------------------------------------------------------------------	---------------------------------------------------------------------------------------------------------------------------------

Early Childhood Services

Colorado Department of Education (Child Identification) (303) 866-6710 1-888-777-4041 www.cde.state.co.us/early-childhoodconnections	Colorado Department of Education (Early Childhood Connections) (303) 866-6710 1-888-777-4041 www.cde.state.co.us/early-childhoodconnections	Community Centered Board (Early Intervention Services) (303) 866-7450 www.cdhs.state.co.us/ohr/dds/DDS_center.html	National Early Childhood Technical Assistance Center (919) 962-2001 www.nectas.unc.edu	National Info. Center for Children and Youth with Disabilities 1-800-695-0285 www.nichcy.org
--------------------------------------------------------------------------------------------------------------------------------------------------------------------------------------------------------------------------	---------------------------------------------------------------------------------------------------------------------------------------------------------------------------------------------------------------------------------	---------------------------------------------------------------------------------------------------------------------------------------------------------------------------------------------------	---------------------------------------------------------------------------------------------------------------------------------------------	---------------------------------------------------------------------------------------------------------------------------------------------------

Elected Officials

Colorado Counties Inc. (303) 861-4076 www.ccionline.org	Governor (303) 866-2471 www.colorado.gov	House of Representatives (303) 866-4865 (D) www.colorado.gov	Office of the State Board of Education (303) 866-6817 www.cde.state.co.us	State Senate (303) 866-4866 (R) www.colorado.gov
-------------------------------------------------------------------------------------------------------------	---------------------------------------------------------------------------------------------	-----------------------------------------------------------------------------------------------------------------	---------------------------------------------------------------------------------------------------------------------------------	-----------------------------------------------------------------------------------------------------

Employment

Association for People in Supported Employment (303) 527-0627 (CO) (804) 278-9187 (Ntl.) www.apse.org	Colorado Division of Vocational Rehabilitation Services (720) 884-1234 www.cdhs.state.co.us/ods/dvr/ods_dvr1.html	Colorado Workforce Centers 1-877-872-5627 www.coworkforce.com/workers.asp	Office of Employment Support Programs 1-800-772-1213 www.ssa.gov/work	U.S. Dept. of Labor Job Accommodation Network 1-800-526-7234 janweb.icdi.wvu.edu
---------------------------------------------------------------------------------------------------------------------------------------------------------	------------------------------------------------------------------------------------------------------------------------------------------------------------------------------------------------	-------------------------------------------------------------------------------------------------------------------------------------------------	------------------------------------------------------------------------------------------------------------------------------	--------------------------------------------------------------------------------------------------------------------------------------------

Housing

CDHS Supportive Housing and Homeless Programs (303) 866-7350 www.cdhs.state.co.us/ohr/shhp	Colorado Affordable Housing Partnership (720) 946-4790 www.coloradoaffordablehousing.org	Colorado Department of Housing and Urban Development 1-800-347-3769 www.hud.gov/local/den	Colorado Housing and Finance Authority (303) 297-2432 1-800-877-2432 www.colohfa.org	U.S. Dept. of Housing and Urban Development (202) 708-1112 1-800-569-4287 www.hud.gov/groups/disabilities.cfm
------------------------------------------------------------------------------------------------------------------------------------------------------------	--------------------------------------------------------------------------------------------------------------------------------------------------------------	-------------------------------------------------------------------------------------------------------------------------------------------------------	-------------------------------------------------------------------------------------------------------------------------------------------	----------------------------------------------------------------------------------------------------------------------------------------------------------------------------------------

Federal/State Disability Laws

Americans with Disabilities Act (ADA) Technical Assistance Center 1-800-949-4232 www.adata.org	Bazon Center for Mental Health Law General Resource for Disability Law (202) 467-5730 www.bazon.org	Colorado Revised Statute (C.R.S.) 27-10.5 Developmental Disabilities' law in Colorado www.state.co.us/gov_dir/stateleg.html	Cornell Law School General Resource for Disability Law www.law.cornell.edu/topics/disability.html	Developmental Disabilities Act Federal Law http://64.78.178.12/stat01/index.htm
Fair Housing Act Federal Law www.hud.gov/offices/fheo/FHLaws/index.cfm	Individuals with Disabilities Education Act Federal Law for Public Education - IDEA www.ideapractices.org/law/regulations/indexPartC.php	The Library of Congress (202) 707-5000 www.rs9.loc.gov/home/tomas.html	Section 504 of the Rehabilitation Act of 1973 Federal Law for Public Education and Public Access http://www.ed.gov/offices/OCR/regs/34cfr104.html	Social Security Act Federal Law 1-800-772-1213 www.ssa.gov/OP_Home/ssact/comp-ssa.htm

Medicaid Waiver Programs in Colorado

Children Extensive Support Waiver (303) 866-7450 www.cdhs.state.co.us/ohr/dds/DDS_center.html	Children's HCBS Waiver (303) 692-2000 1-800-886-7689 www.chcpf.state.co.us	Children's Habilitation Residential Program Waiver (303) 692-2000 1-800-886-7689 www.chcpf.state.co.us	Comprehensive Services Waiver (303) 866-7450 www.cdhs.state.co.us/ohr/dds/DDS_center.html	Elderly, Blind and Disabled Waiver (303) 692-2000 1-800-886-7689 www.chcpf.state.co.us
Mentally Ill Waiver (303) 866-7400 www.cdhs.state.co.us/ohr/mhs/index.html	Person Living with AIDS Waiver (303) 692-2000 1-800-886-7689 www.chcpf.state.co.us	Supported Living Services Waiver (303) 866-7450 www.cdhs.state.co.us/ohr/dds/DDS_center.html	Traumatic Brain Injury Waiver (303) 692-2000 1-800-886-7689 www.chcpf.state.co.us	

Medical

Colorado Dept. of Health Care Policy and Financing (303) 866-3513 1-800-221-3943 www.chcpf.state.co.us	Child Health Plan Plus (CHP+) (303) 692-2960 1-800-359-1991 www.cdphc.state.co.us	Colorado Division of Insurance (303) 894-7499 1-800-930-3745 www.dora.state.co.us/insurance	FirstHelp 1-800-283-3221 www.chcpf.state.co.us	The Family Health Line (CDPHE) (303) 692-2229 1-800-688-7777 www.cdphc.state.co.us
Patient Advocacy Coalition (303) 744 -7667 www.patientadvocacy.net	Patient Assistance Program for Medications 1-800-727-5400 www.merck.com/program/pap			

Philanthropic Organizations (Selected resources with links to other organizations)

Colorado Association of Foundations (303) 300-1790 www.coloradofunders.org	Community Resource Center (303) 632-1540 1-800-516-6284 www.crcamerica.org	The Foundation Center (212) 620-4230 1-800-424-9836 www.fdncenter.org
--------------------------------------------------------------------------------------------------------------------------------------	------------------------------------------------------------------------------------------------------------------------------------	------------------------------------------------------------------------------------------------------------------------------

Provider Associations

Colorado Association of Community Centered Boards (CACCB) (303) 832-1618 www.caccb.org	Mental Health Association of Colorado (303) 377-3040 1-800-456-3249 www.mhacolorado.org	Colorado Behavioral Health Centers (303) 832-7594 http://www.cbhc.org	Visiting Nurse Associations of America (617) 523-4042 (303) 744-6363 (Denver) www.vnaa.org
----------------------------------------------------------------------------------------------------------------------------------------	--------------------------------------------------------------------------------------------------------------------------------------------------	----------------------------------------------------------------------------------------------------------------------	----------------------------------------------------------------------------------------------------------------------------------------------

Related Resources with Common Links to Disabilities

Colorado Office of Resource and Referral Agencies (CORRA) (303) 290-9088 www.corra.org	Family Village (internet site only) www.familyvillage.wisc.edu	Half The Planet Foundation (202) 429-6810 www.halftheplanet.org/index.html	National Respite Locator 1-800-473-1727 www.chtop.com/Locator	Social Security Administration 1-800-772-1213 www.ssa.gov
--------------------------------------------------------------------------------------------------------------------------------------------	------------------------------------------------------------------------------------------------------------------------------	---------------------------------------------------------------------------------------------------------------------------------------------------	---------------------------------------------------------------------------------------------------------------------------	-------------------------------------------------------------------------------------------------------------

State of Colorado Government Offices

Children's Health and Rehabilitation Services (303) 866-7450 www.cdhs.state.co.us/cyf/chrs/chrshome.htm	Citizens Advocate Office (303) 692-2035 1-800-886-7689 www.colorado.gov	Department of Education (303) 866-6710 1-888-777-4041 www.cde.state.co.us	Department of Human Services (303) 866-5700 www.cdhs.state.co.us	Department of Public Health and Environment (303) 692-2000 1-800-886-7689 www.cdphe.state.co.us
Division of Developmental Disabilities Services (303) 866-7450 www.cdhs.state.co.us/ohr/dds/DDS_center.html	Mental Health Services (303) 866-7400 www.cdhs.state.co.us/ohr/mhs/index.html		State Human Services Hotline Dial 211 Weld, Larimer & Counties, statewide in 2006	

Good Internet Links and Additional Information

Administration on Developmental Disabilities (202) 690-6590 www.acf.dhhs.gov/programs/add	American Association on Mental Retardation (202) 387-1968 1-800-424-3688 www.aamr.org	The Arc of the United States (301) 565-3842 1-800-433-5255 www.thearc.org	Autism Society of America (301) 657-0881 1-800-3AUTISM www.autism-society.org	Autism National Committee www.autcom.org
Centers for Medicare and Medicaid Services (303) 844-7117 (CO) (410) 786-3000 (Ntl.) www.cms.hhs.gov	Coleman Institute for Cognitive Disabilities (303) 492-0639 www.cu.edu/colemangift	Directory of National Advocacy and Information Resources www.therapistfinder.net/national	Disability Related Organizations (773) 661-1011 www.makoa.org/org.htm	The National Council on Disability (202) 272-2004 www.ncd.gov/index.html
National Down Syndrome Society (212) 460-9330 1-800-221-4602 www.ndss.org	National Association for the Dually Diagnosed (845) 331-4336 1-800-331-5362 www.thenadd.org	The Office of Special Education and Rehabilitative Services (202) 205-5465 www.ed.gov/offices/OSERS	United Cerebral Palsy - UCP National (202) 776-0406 1-800-872-5827 www.ucpa.org	U.S. Dept. of Housing and Urban Development (202) 708-1112 www.hud.gov/groups/disabilities.cfm



Developmental
Disabilities Council



Colorado Association of Community Centered Boards



Division of Developmental
Disabilities Services



Colorado Department of Human Services
people who help people