

NOTE:
 DISTRIBUTION OF COPPER DETERMINED USING MINTEQA2. LOW FLOW (OCTOBER 1998) CONCENTRATIONS FOR ALAMOSA RIVER STATION AR41.2 (SEGMENT 3C) USED AS INPUT.

File: R:\1149_046.BTM5yearreview\FIGS.DWG

**SUMMITVILLE MINE SUPERFUND SITE
 FIVE-YEAR REVIEW**



DISTRIBUTION OF DISSOLVED AND PARTICULATE COPPER AS A FUNCTION OF pH IN THE ALAMOSA RIVER

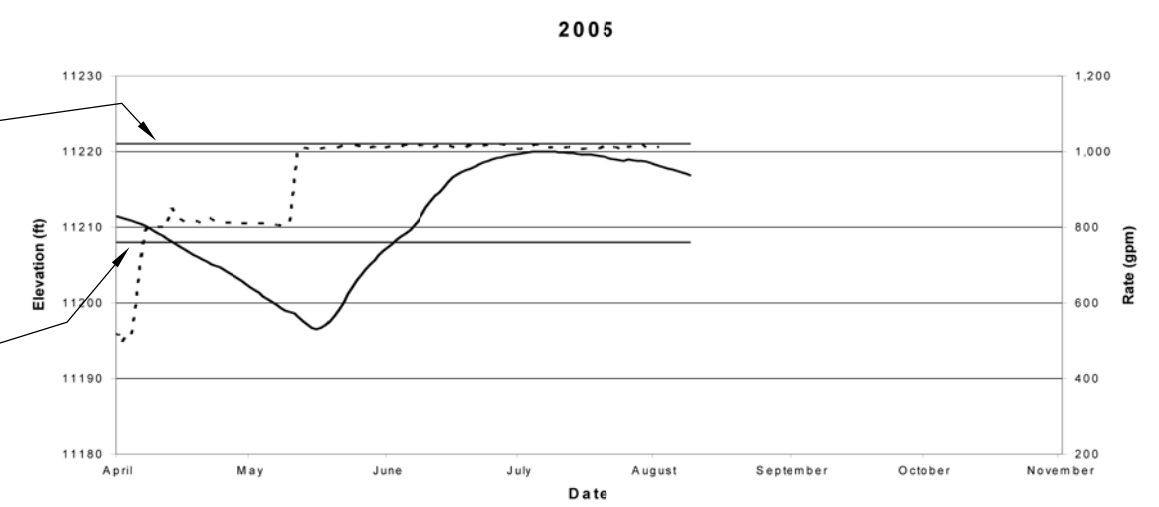
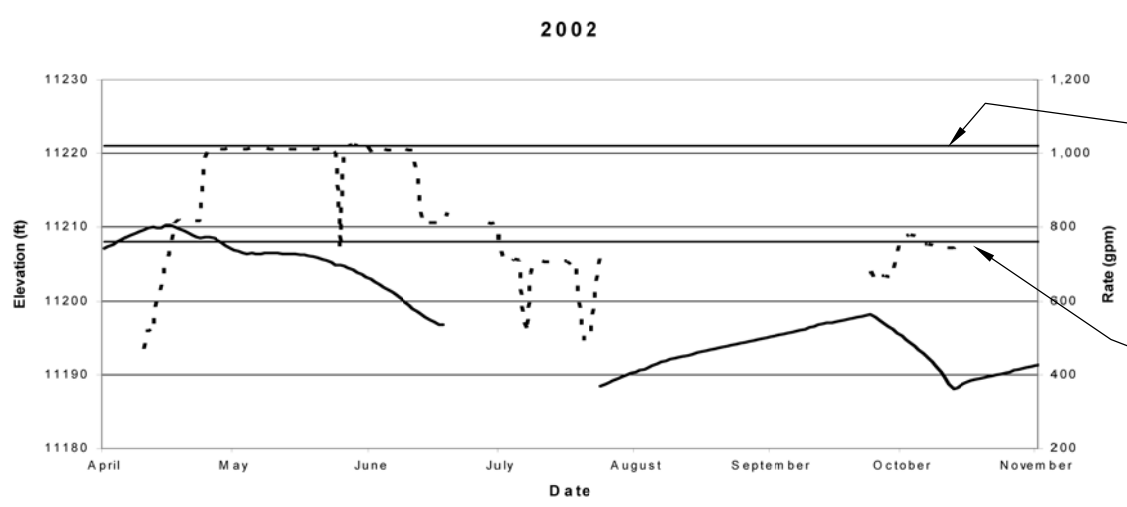
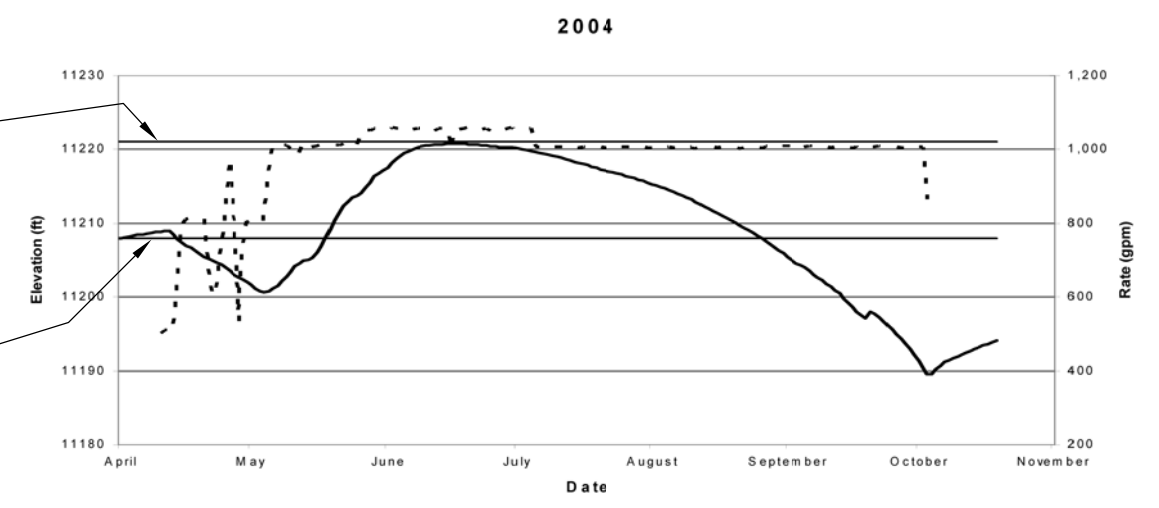
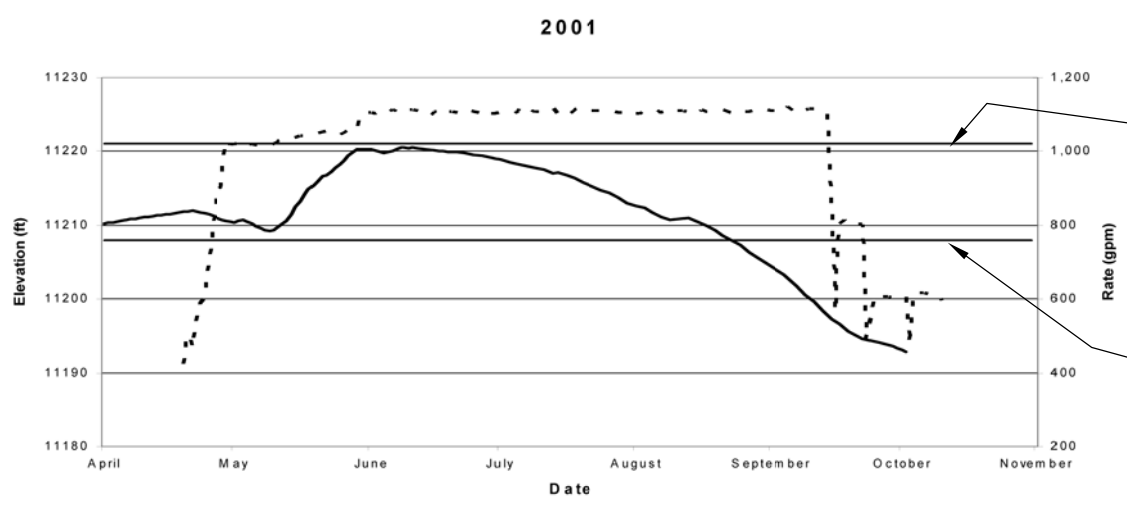
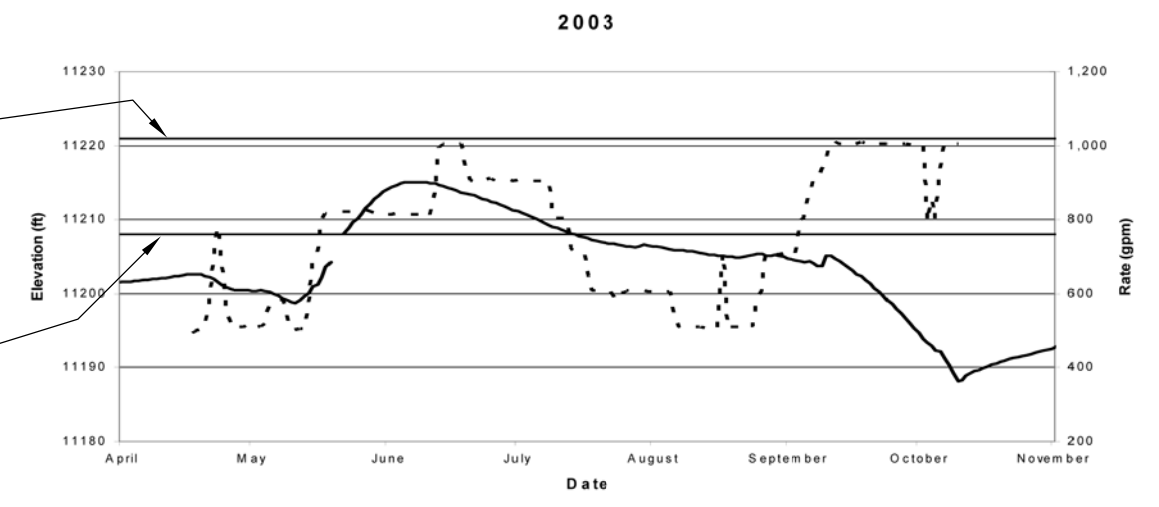
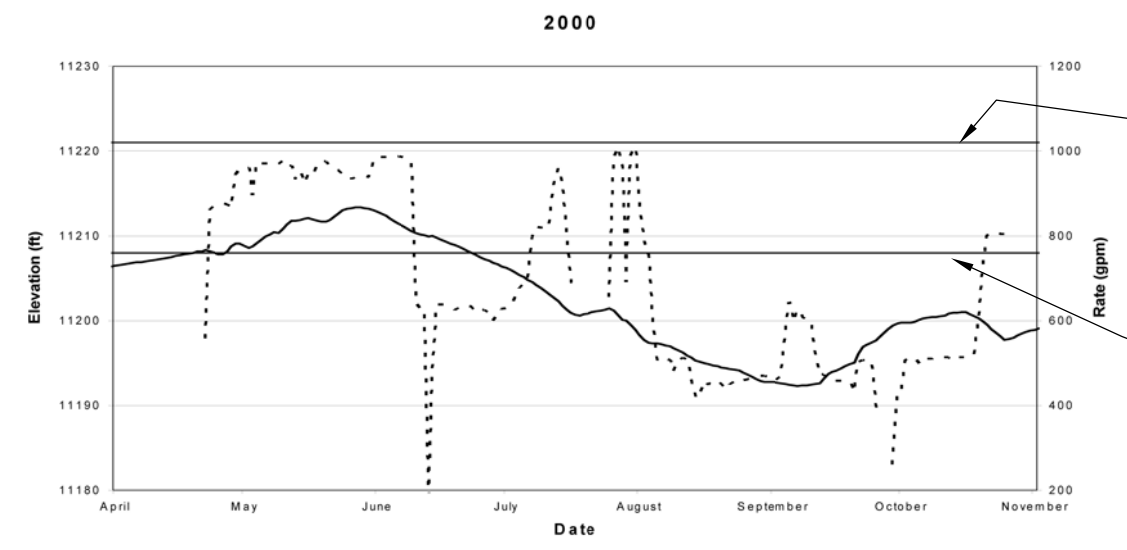
FIGURE:

7-1

Date: 08/11/05

By: KPA

Source: G:\1149\027\phase_03\m\nepool\drawdown\m\nepool_db.wb3



SDI Crest Elevation (ft)

SDI Outlet Works Elevation (ft)

SDI Crest Elevation (ft)

SDI Outlet Works Elevation (ft)

SDI Crest Elevation (ft)

SDI Outlet Works Elevation (ft)

LEGEND:

———— SDI Elevation (ft)

----- Water Plant Treatment Rate

File: R:\1149_046.BTM\SDI-Elevation X-1.dwg

**SUMMITVILLE MINE SUPERFUND SITE
FIVE-YEAR REVIEW**

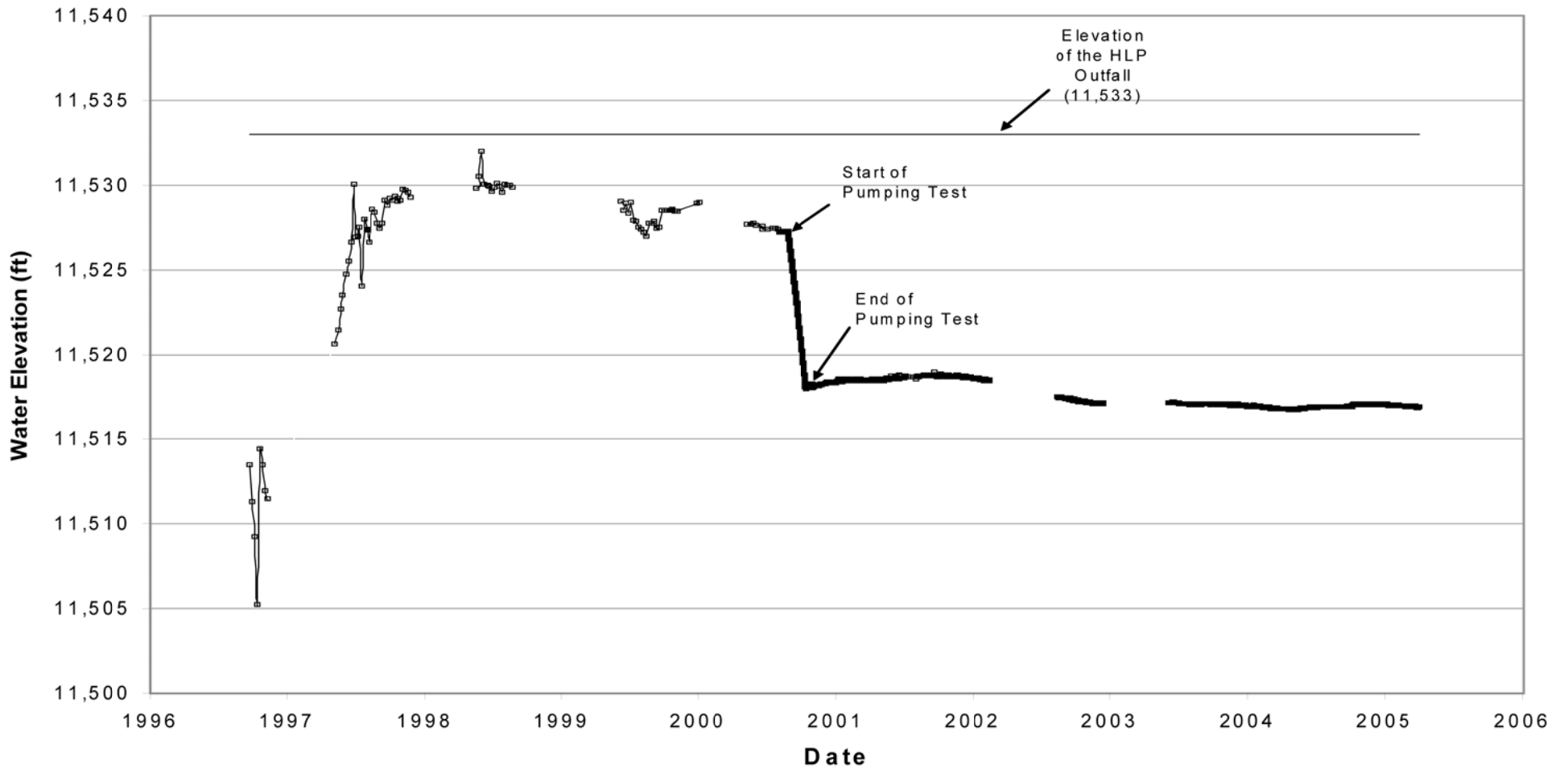
Historic SDI Elevation and Water
Treatment Plant Rate

Date: 06/07/2005 By: KPA

Source: 1149_046Data Support\SDI-Data.xls



FIGURE:
7-2



File: R:\1149_046,BTM\FIGS3.DWG

SUMMITVILLE MINE SUPERFUND SITE
FIVE-YEAR REVIEW

HYDROGRAPH FOR HLP
WELL OC-27

Date: 08/16/05

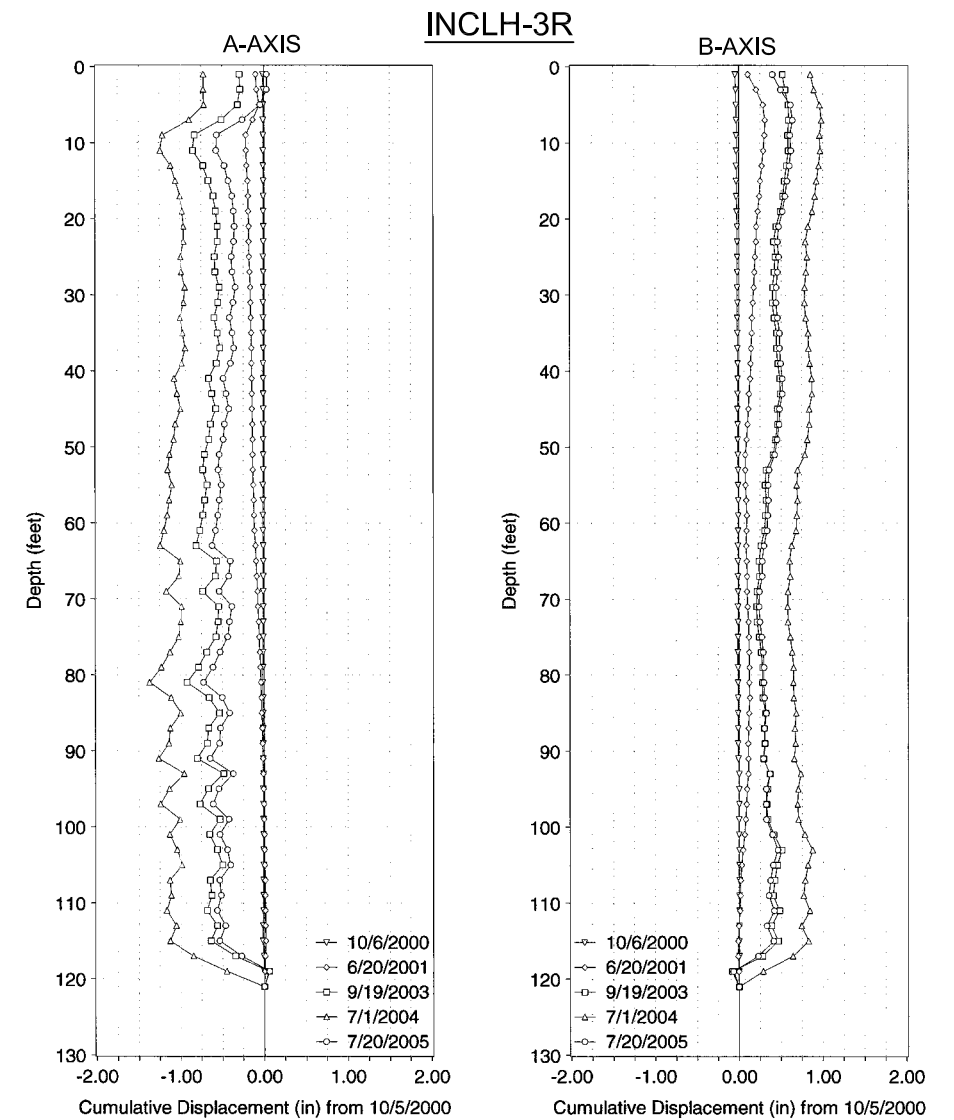
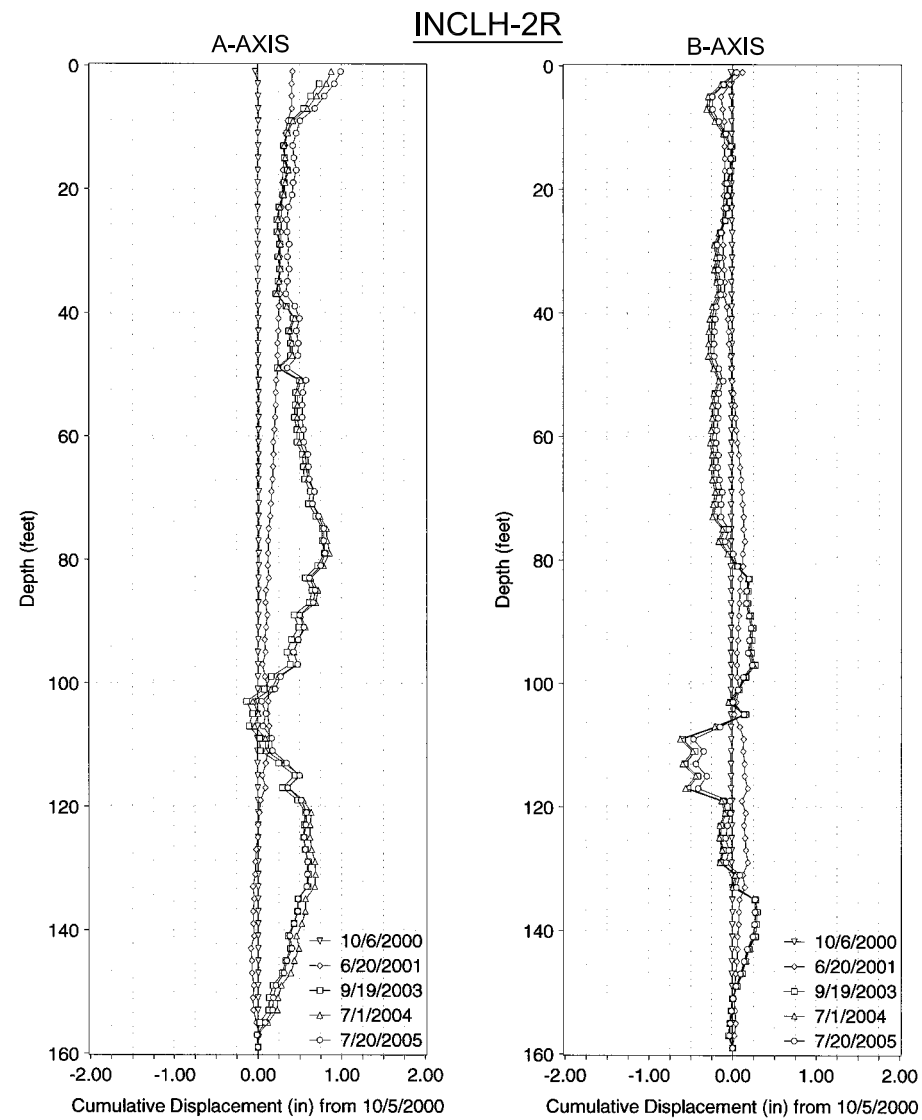
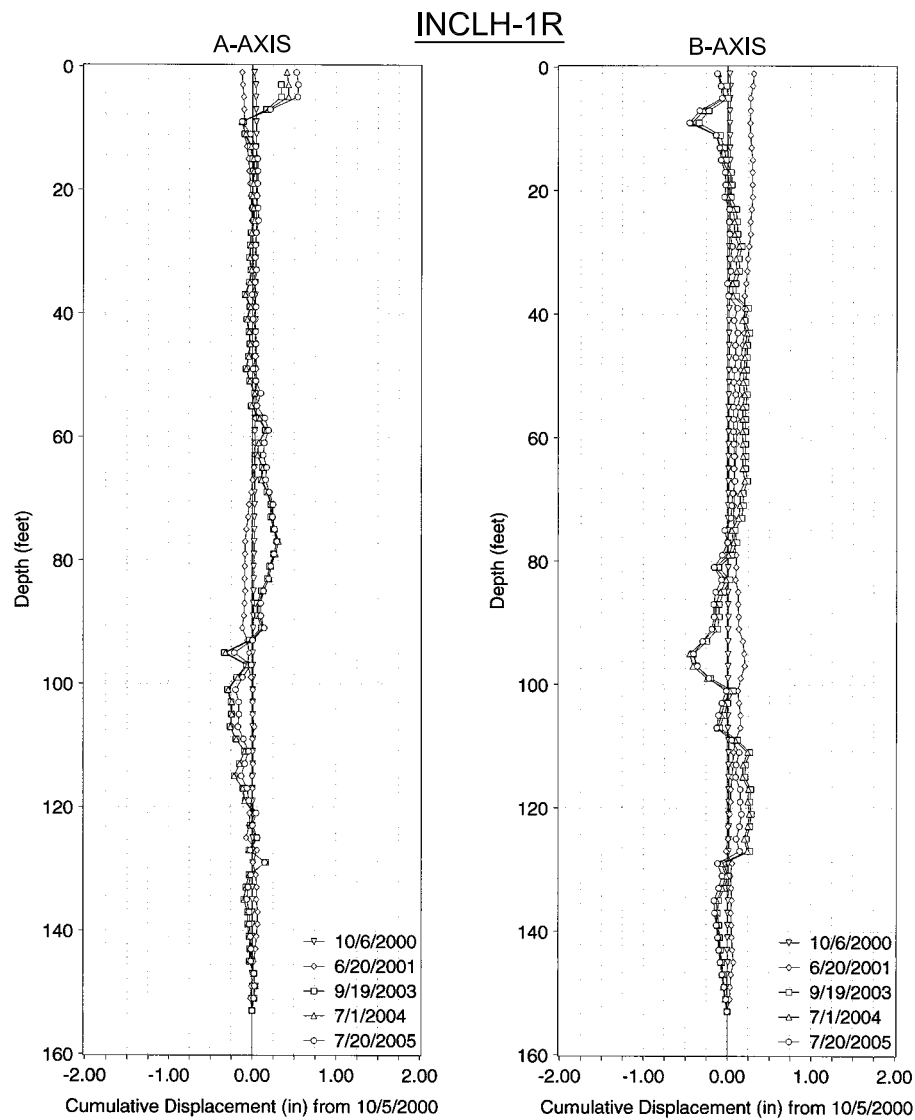
By: KPA

Source: G:\1149\027\phase_03\RI_Report\Prelim Draft\2000_GW_LV_DB.wb3

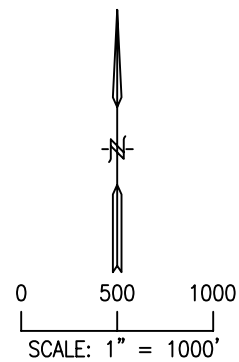


FIGURE:

7-3

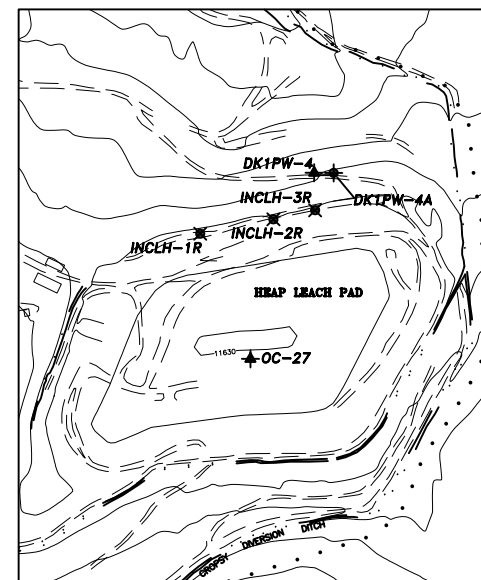


NOTE:
 THE A-AXES OF THE INCLINOMETERS ARE ORIENTED PERPENDICULAR TO THE HLP DIKE NO. 1 (~NORTH-SOUTH), WHILE THE B-AXES ARE ORIENTED PARALLEL TO THE DIKE CREST (~EAST-WEST).



LEGEND

- ◆ BEDROCK WELL
- ▲ FILL/WASTE
- ★ ROCK/PROCESSED ORE WELL
- ✱ INCLINOMETER



File: R:\1149_046.BTM5YearReview\FIGURE7-4.DWG

SUMMITVILLE MINE SUPERFUND SITE
 FIVE-YEAR REVIEW

HLP DIKE NO. 1
 INCLINOMETER SURVEY RESULTS

Date: 08/24/05

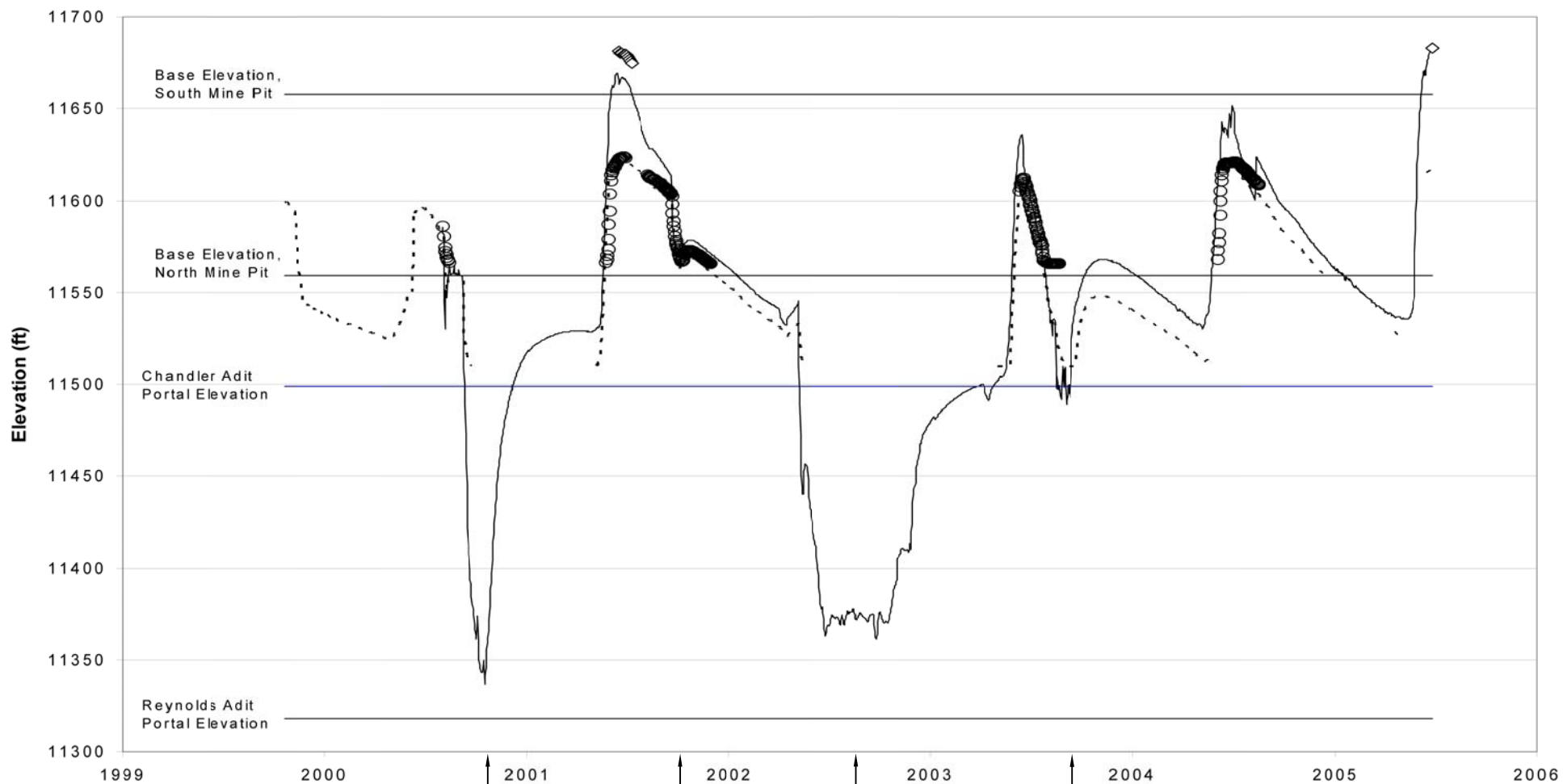
By: DJH

Source:



FIGURE:

7-4



LEGEND:

- - - Mine Pool elevation measured at Chandler Bulkhead
- Mine Pool elevation measured at Reynolds Bulkhead
- Well RCMW-8 completed in the North Pit
- ◇ Well BORMW-10 completed in the South Pit

File: R:\1149_046.BTMFIGS3.DWG

**SUMMITVILLE MINE SUPERFUND SITE
FIVE-YEAR REVIEW**

**HISTORIC ELEVATION OF THE
MINE POOL AND WELLS
COMPLETED IN THE MINE PITS**

Date: 08/16/05

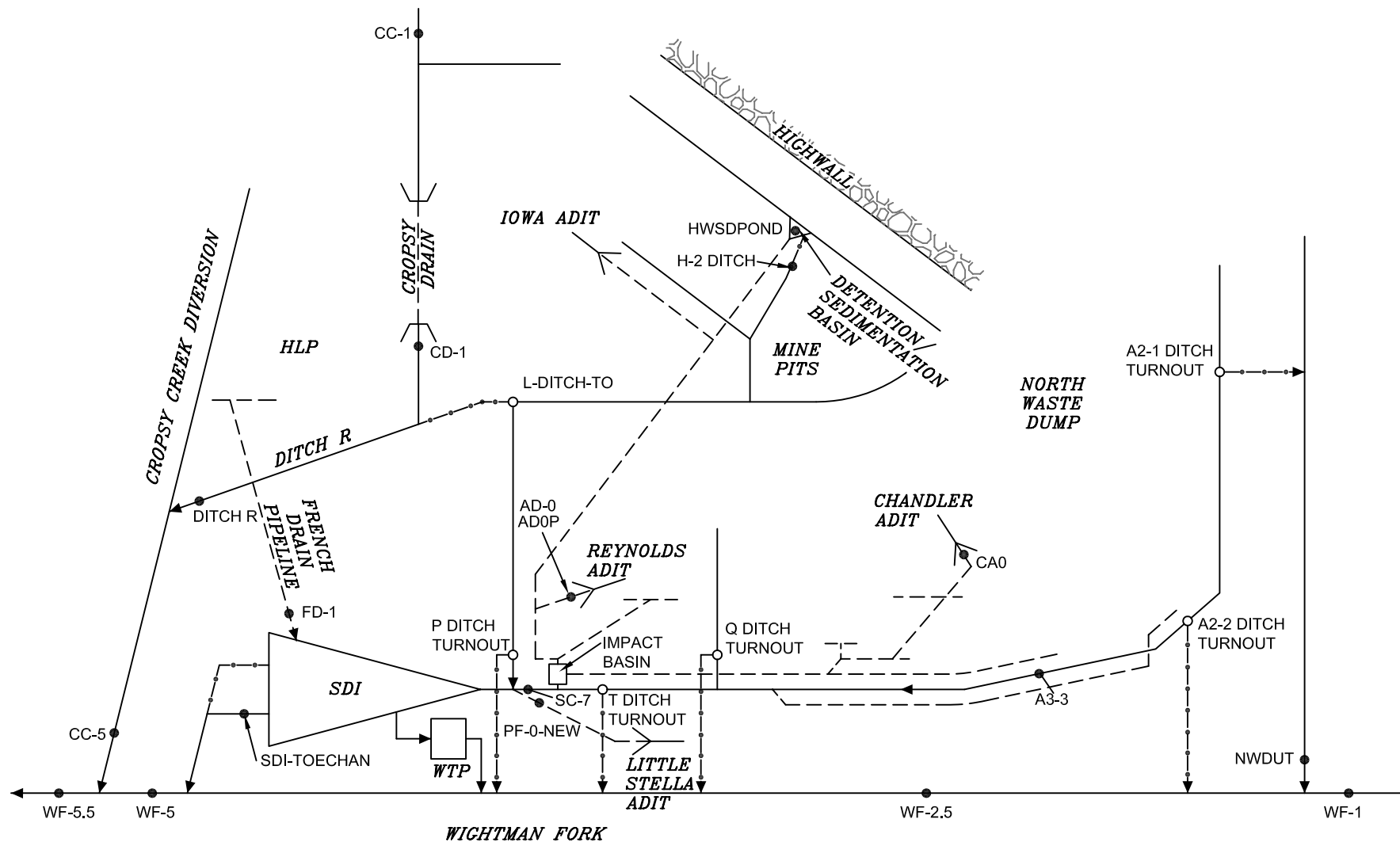
By: KPA

Source: G:\1149\027\phase_03\RI_Report\Prelim Draft\2000_GW_LV_DB.wb3



FIGURE:

7-5



LEGEND

- Ditch Turnout Structures and Sample Points
- Sample Points
- ← Surface Water System, with Arrow Indicating Flow Direction
- - - Intermittent Surface Water Flow
- - - - Subsurface Drain or Pipeline

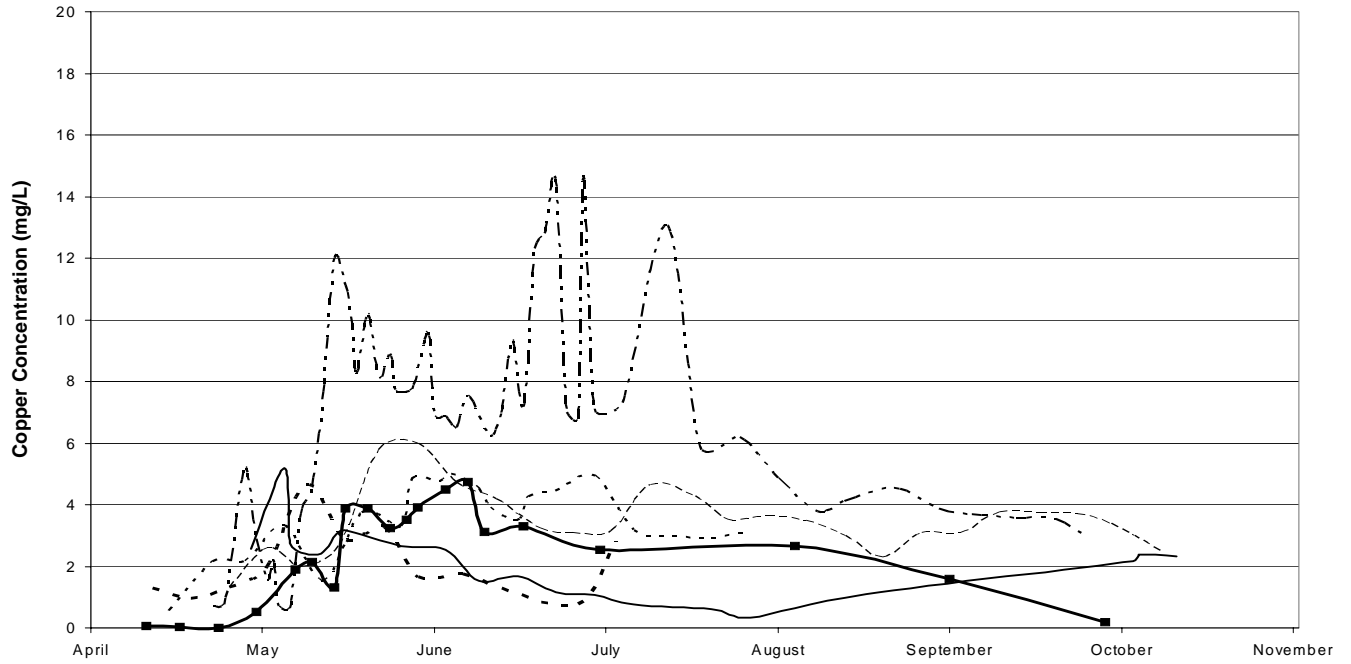
SUMMITVILLE MINE SUPERFUND SITE FIVE-YEAR REVIEW	
2005 ON-SITE SURFACE WATER STRAIGHT LINE DIAGRAM	
Date: 08/11/05	By: KPA
File: CADSERVER\1149_036.BTM\OU-5\SCHEMATIC-OU_5.DWG	



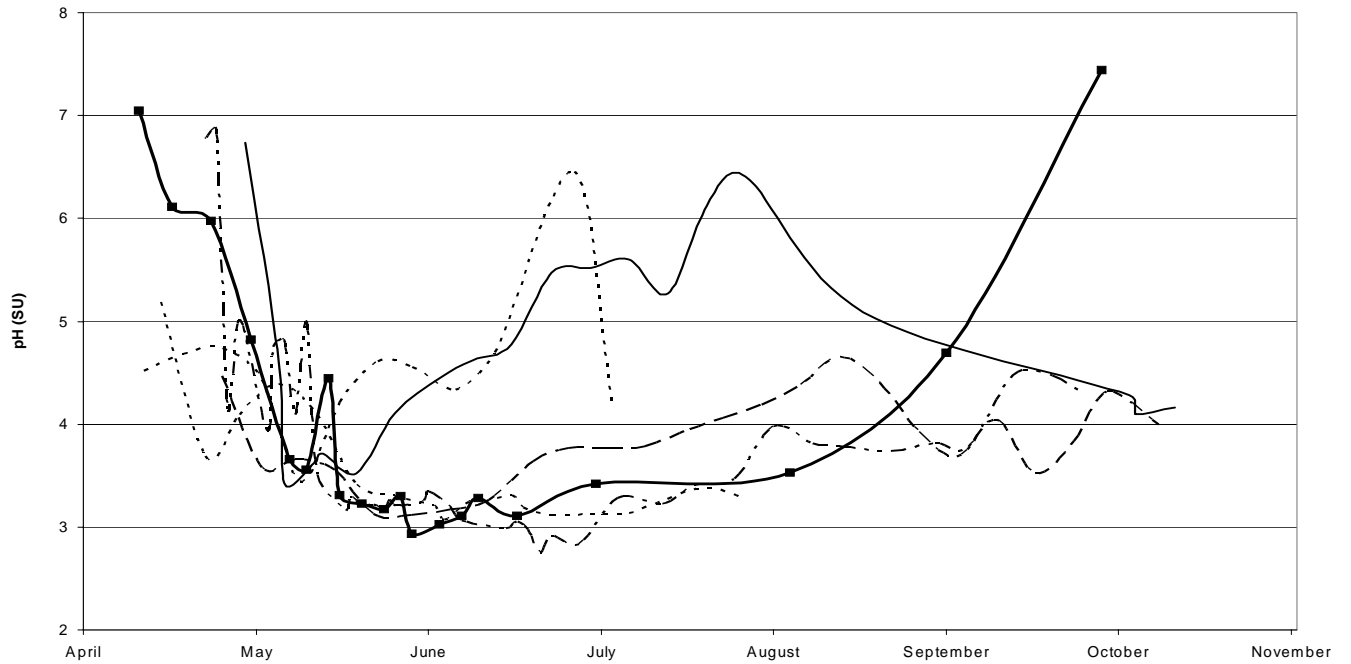
FIGURE:

7-6

HISTORIC COPPER CONCENTRATIONS



HISTORIC pH



LEGEND:

- 2000
- - - 2001
- . - . 2002
- - - 2003
- 2004
- - - 2005

NOTE:
COPPER CONCENTRATION IN THE TOTAL FORM.

File: R:\1149_046.BTM\5yearreview\FIGS7.DWG

SUMMITVILLE MINE SUPERFUND SITE
FIVE-YEAR REVIEW

HISTORIC COPPER
CONCENTRATION AND pH AT
STATION L3-1 / L-DITCH-TO

Date: 08/07/05

By: KPA

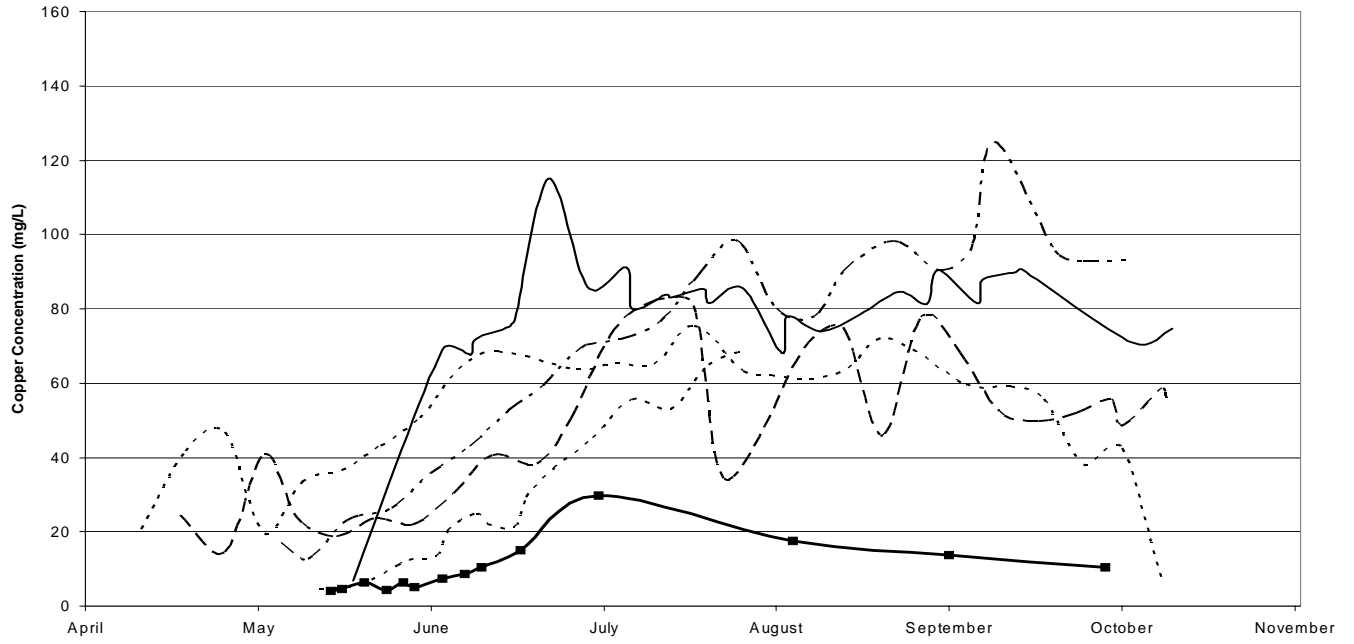
Source: f:\1149_046\5-year review\fig3.xls



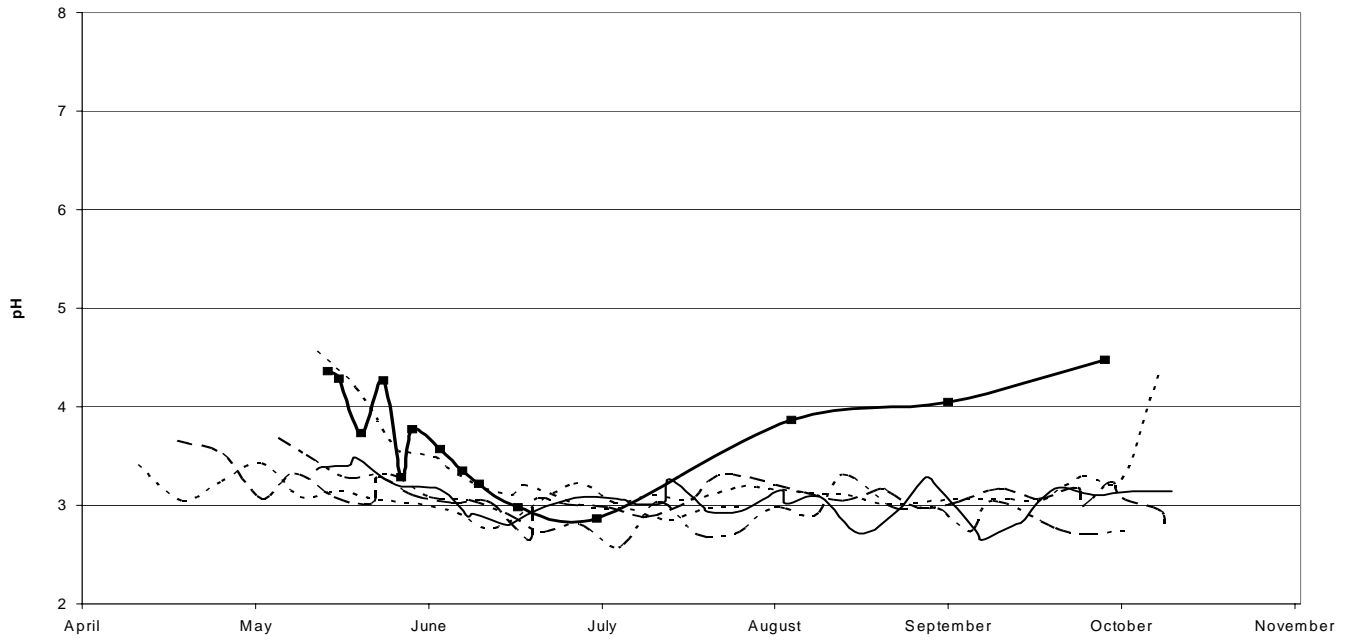
FIGURE:

7-7

HISTORIC COPPER CONCENTRATIONS



HISTORIC pH



LEGEND:

- 2000
- - - 2001
- . - . 2002
- - - - 2003
- 2004
- - - - 2005

NOTES:

COPPER CONCENTRATION IN THE TOTAL FORM.
T-DITCH-TURNOUT DATA DISPLAYED STARTING 2004.

File: R:\1149_046.BTM\5yearreview\FIGS7.DWG

SUMMITVILLE MINE SUPERFUND SITE
FIVE-YEAR REVIEW

HISTORIC COPPER
CONCENTRATION AND pH AT
STATION SC-7 / T-DITCH-TO

Date: 07/07/05

By: KPA

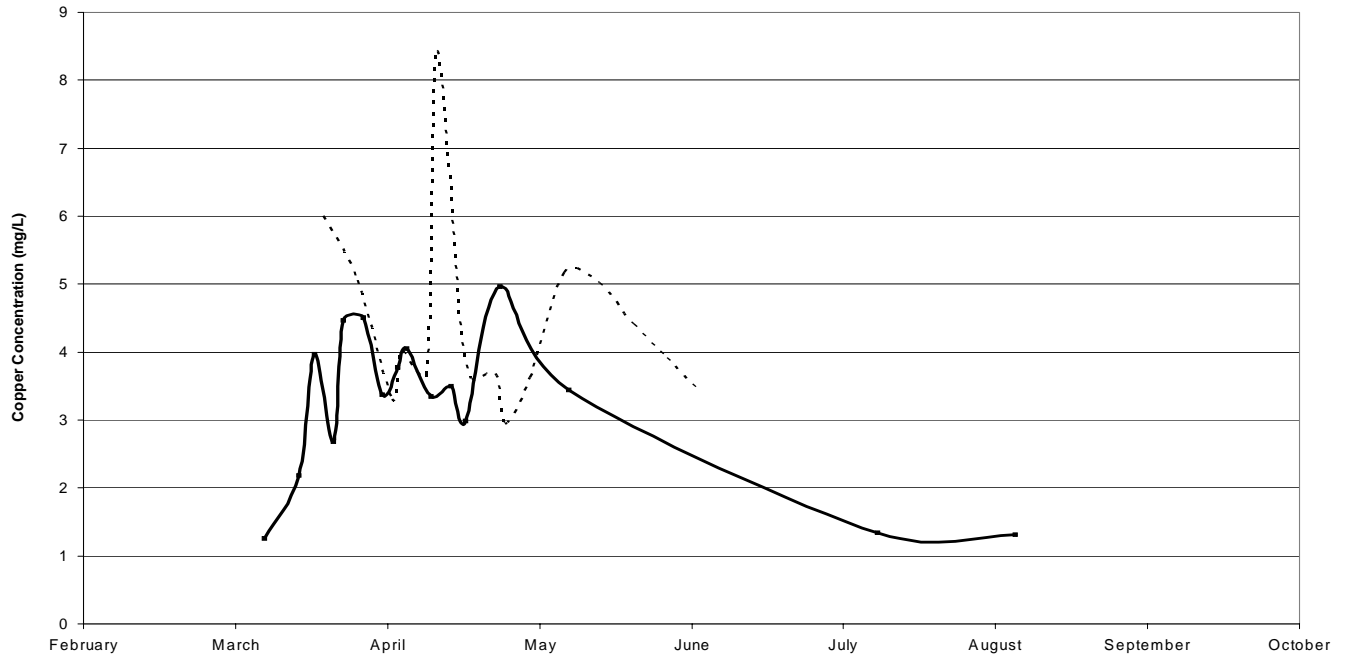
Source: f:\1149_046\5-year review\fig3.xls



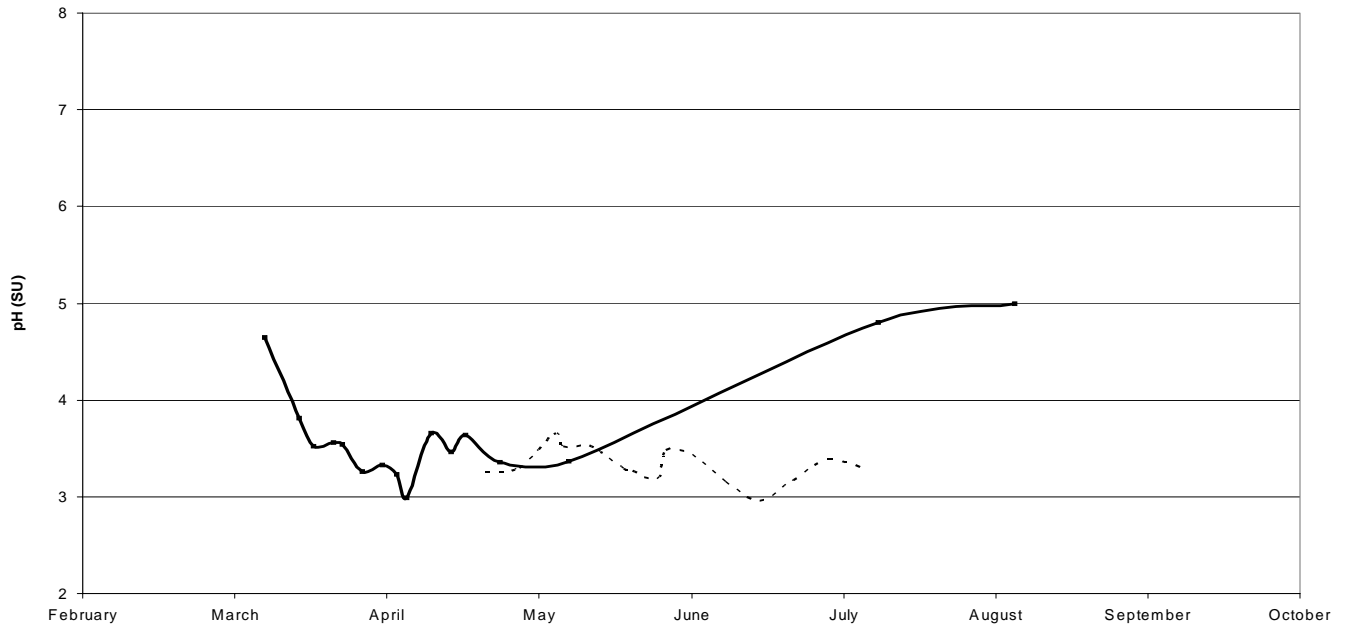
FIGURE:

7-8

HISTORIC COPPER CONCENTRATIONS



HISTORIC pH



LEGEND:
 — 2004
 - - - 2005

NOTE:
 COPPER CONCENTRATION IN THE TOTAL FORM.

File: R:\1149_046.BTM\5yearreview\FIGS7.DWG

SUMMITVILLE MINE SUPERFUND SITE
 FIVE-YEAR REVIEW

HISTORIC COPPER
 CONCENTRATION AND pH AT
 STATION P-DITCH-TO

Date: 07/07/05

By: KPA

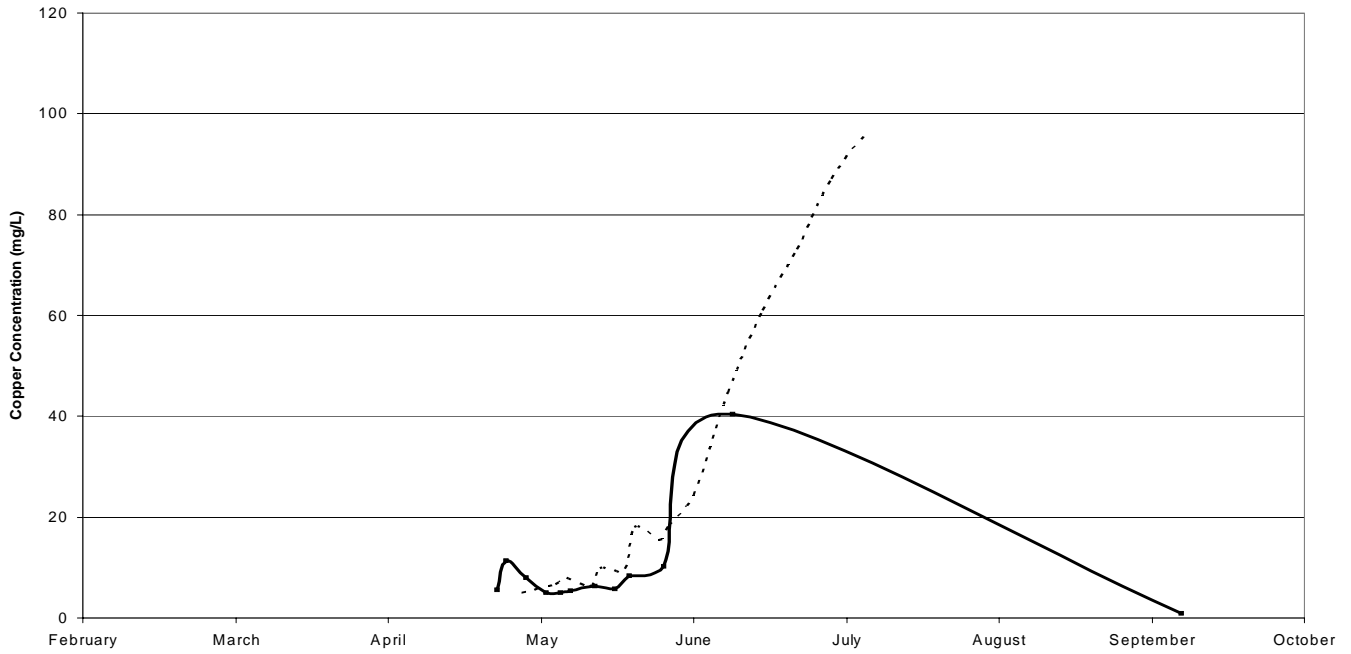
Source: f:\1149_046\5-year review\fig3.xls



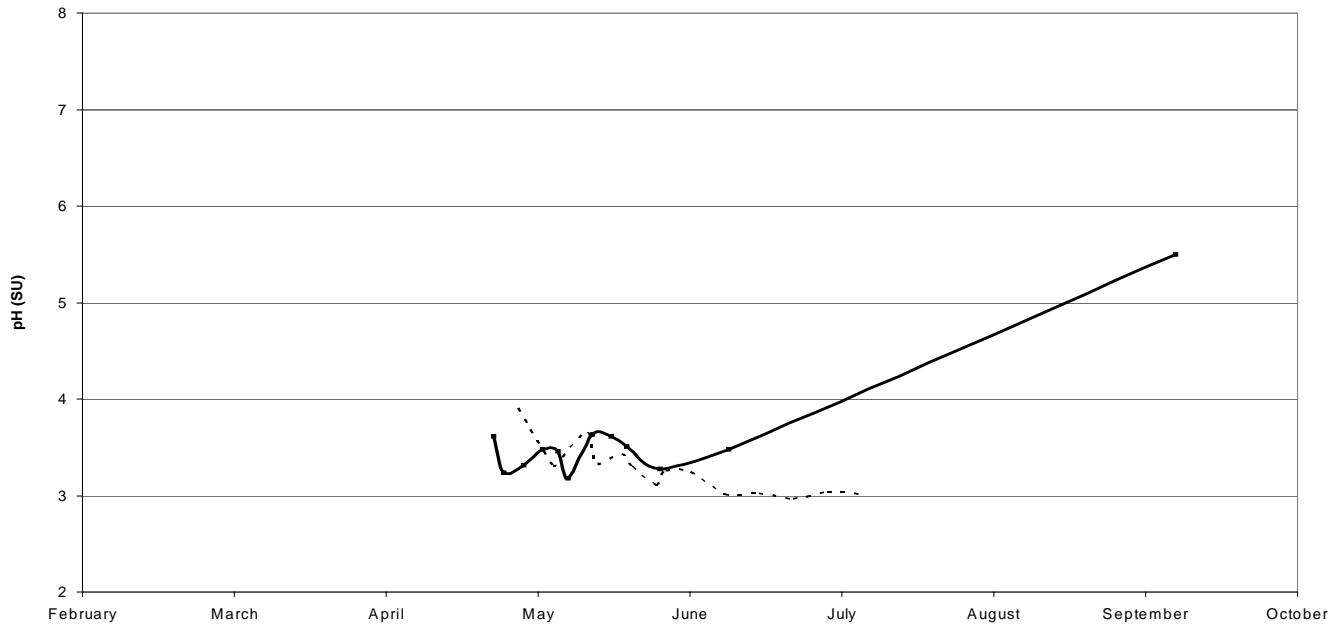
FIGURE:

7-9

HISTORIC COPPER CONCENTRATIONS



HISTORIC pH



LEGEND:

— 2004
 - - - 2005

NOTE:
 COPPER CONCENTRATION IN THE TOTAL FORM.

File: R:\1149_046.BTM5yearreview\FIGS7.DWG

**SUMMITVILLE MINE SUPERFUND SITE
 FIVE-YEAR REVIEW**

**HISTORIC COPPER
 CONCENTRATION AND pH AT
 STATION Q-DITCH-TO**

Date: 07/07/05

By: KPA

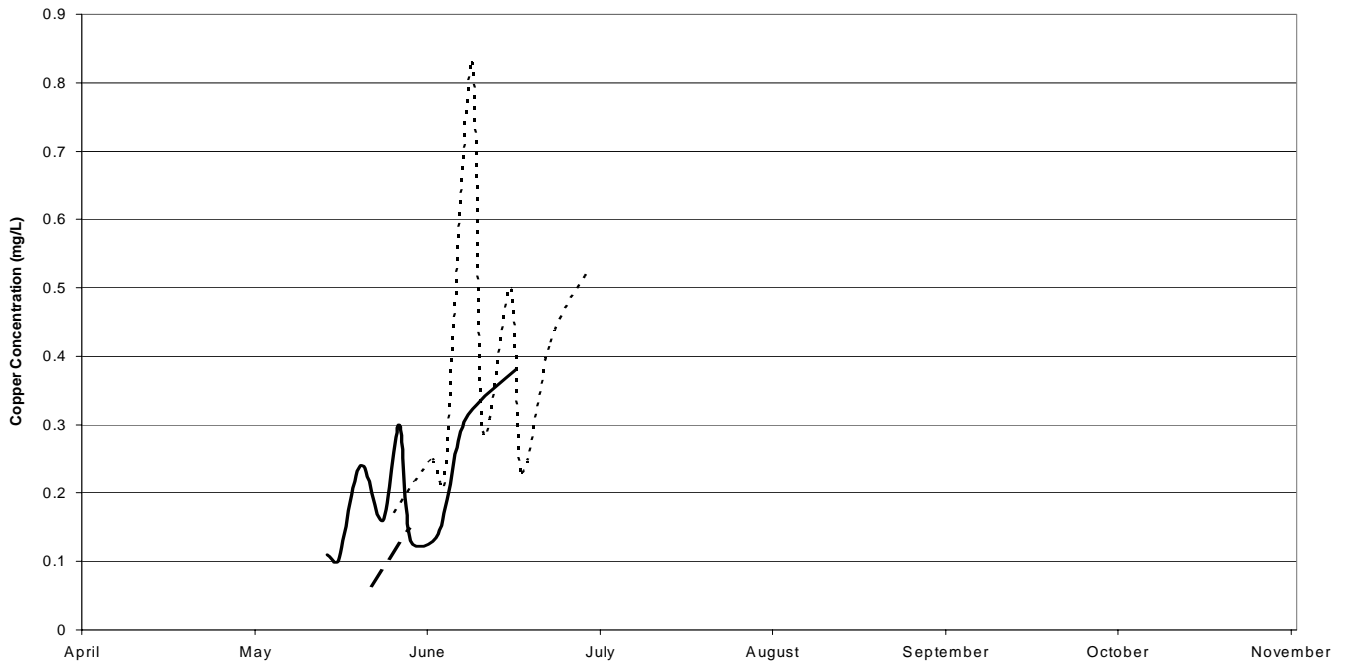
Source: f:\1149_0465-year review\fig3.xls



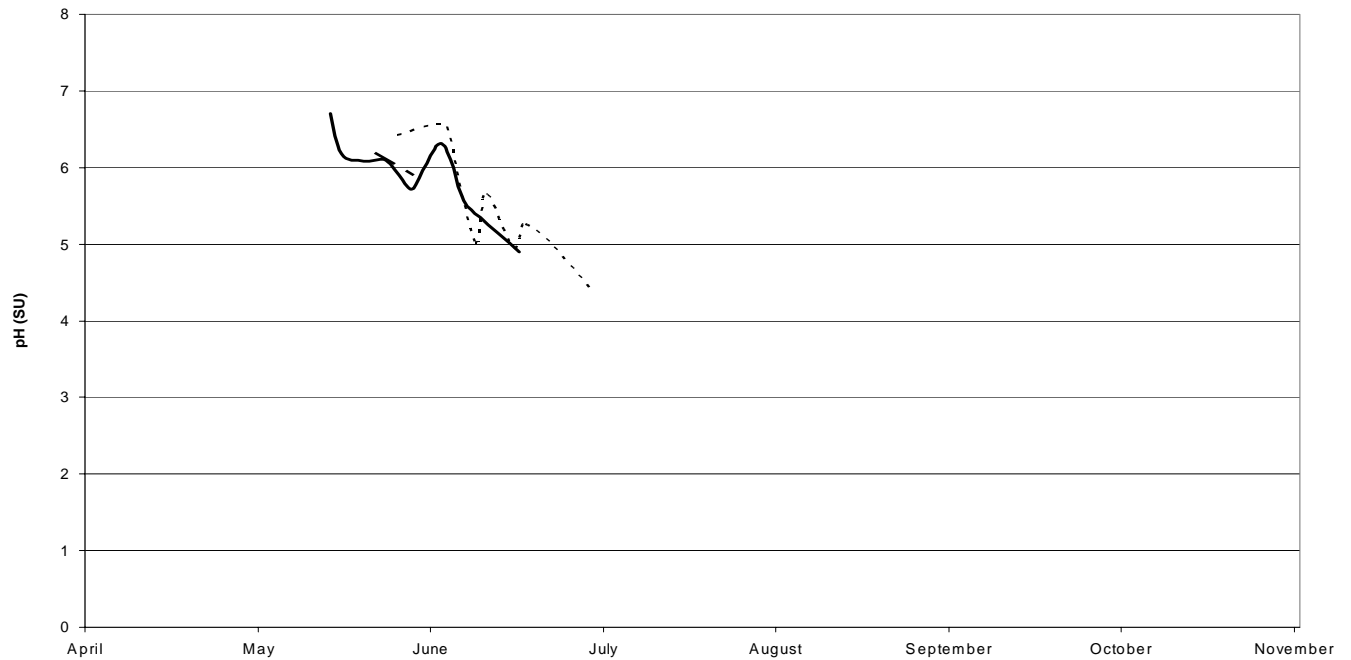
FIGURE:

7-10

HISTORIC COPPER CONCENTRATIONS



HISTORIC pH



LEGEND:

- 2003
- 2004
- 2005

NOTE:
COPPER CONCENTRATION IN THE TOTAL FORM.

File: R:\1149_046\BTM\5yearreview\FIGS7.DWG

SUMMITVILLE MINE SUPERFUND SITE
FIVE-YEAR REVIEW

HISTORIC COPPER
CONCENTRATION AND pH AT
STATION A2-1-TO

Date: 07/07/05

By: KPA

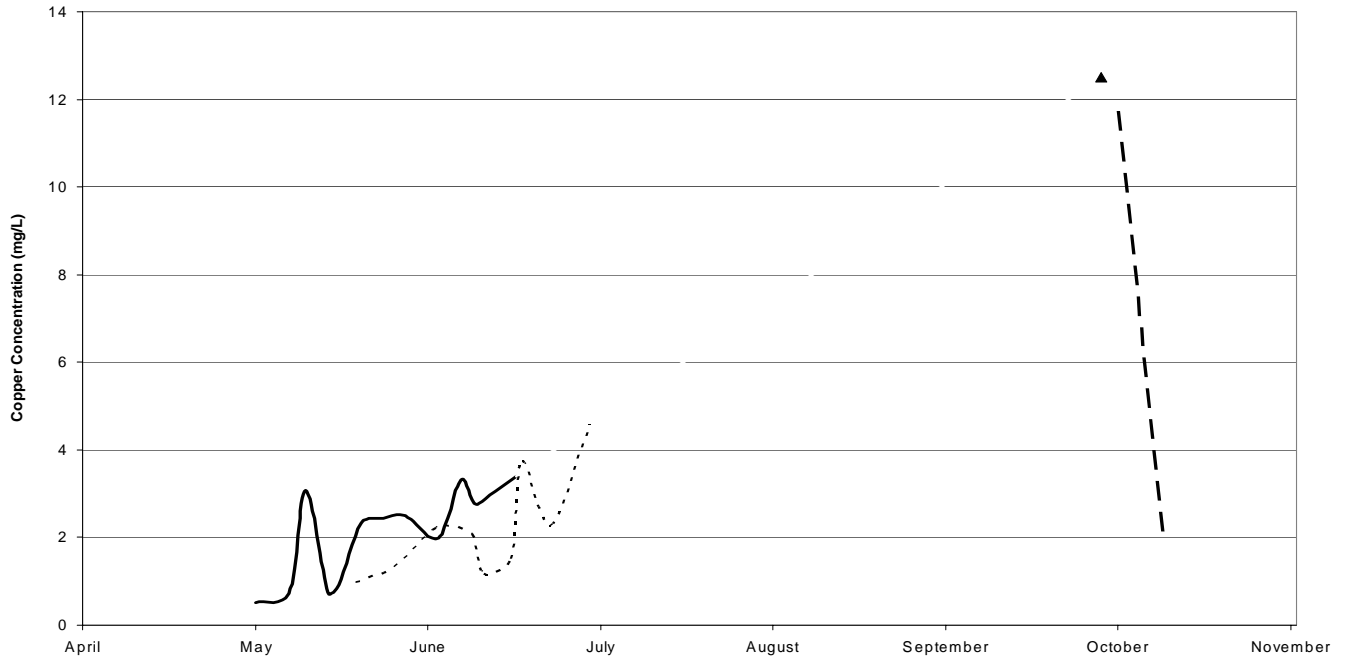
Source: f:\1149_046\5-year review\fig3.xls



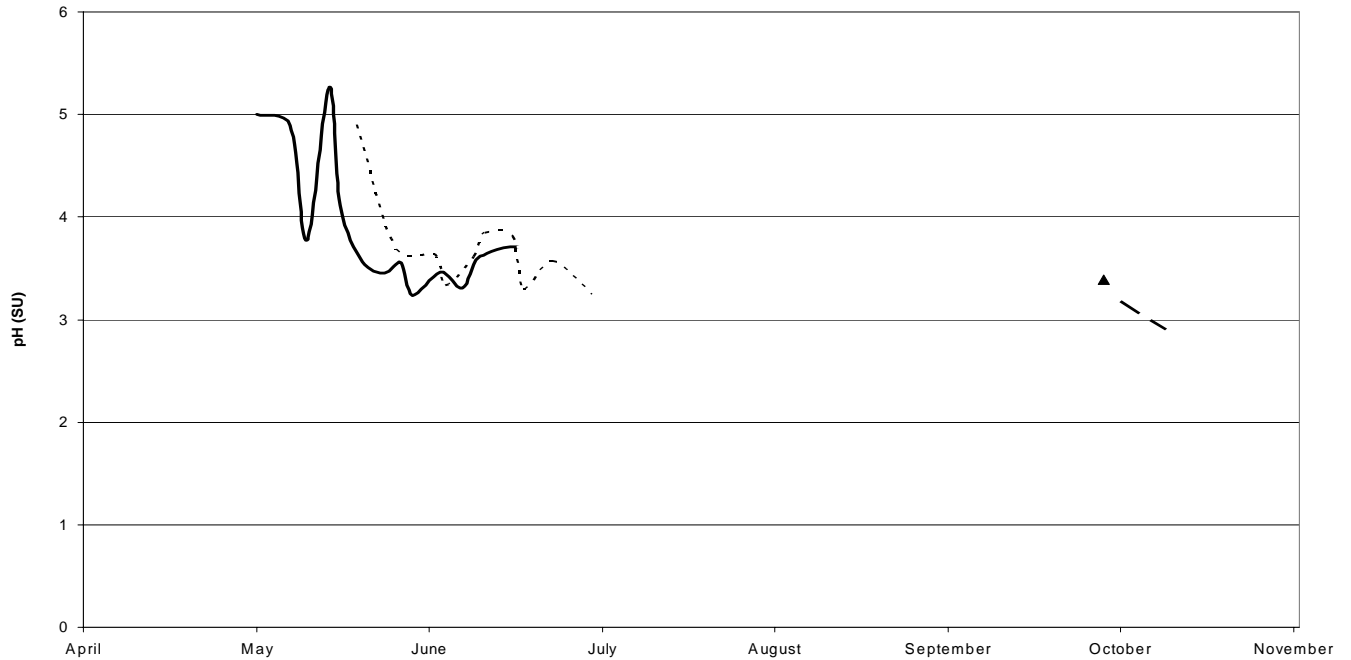
FIGURE:

7-11

HISTORIC COPPER CONCENTRATIONS



HISTORIC pH



LEGEND:

- 2003
- 2004
- ▲ INSTANTANEOUS 2004 DATA POINT
- ... 2005

NOTE:
COPPER CONCENTRATION IN THE TOTAL FORM.

File: R:\1149_046.BTM\5yearreview\FIGS7.DWG

SUMMITVILLE MINE SUPERFUND SITE
FIVE-YEAR REVIEW

HISTORIC COPPER
CONCENTRATION AND pH AT
STATION A2-2-TO

Date: 07/07/05

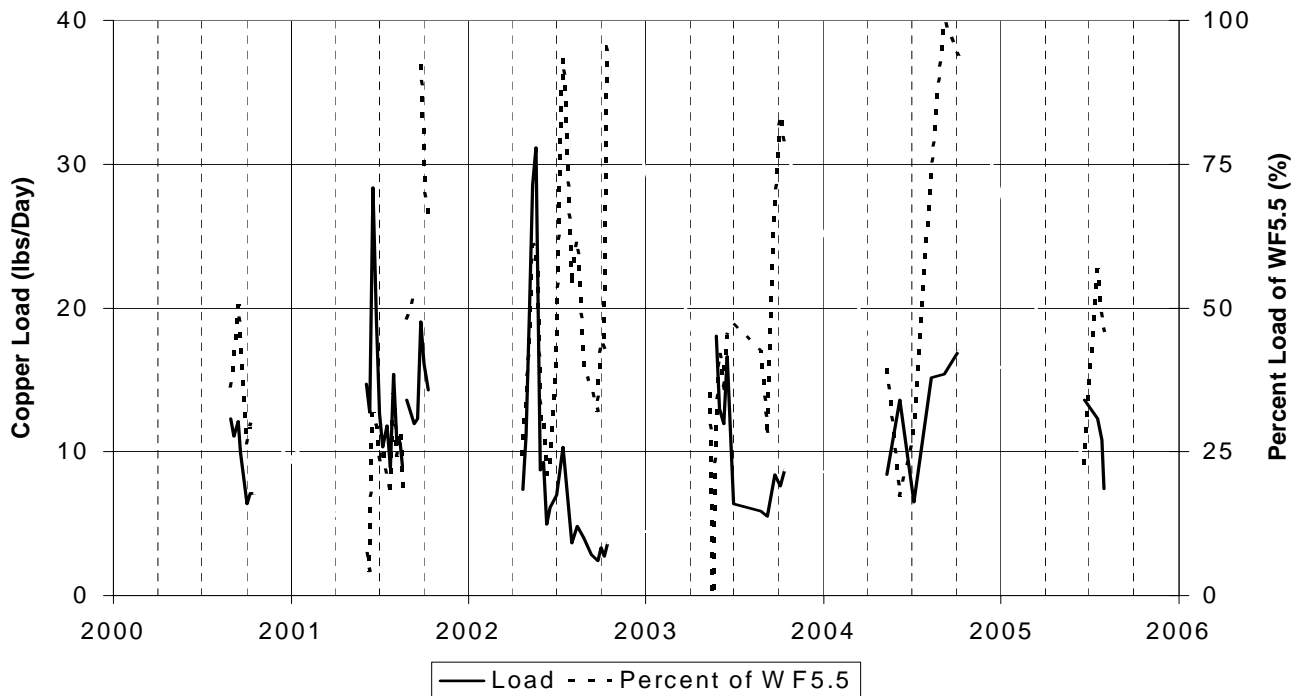
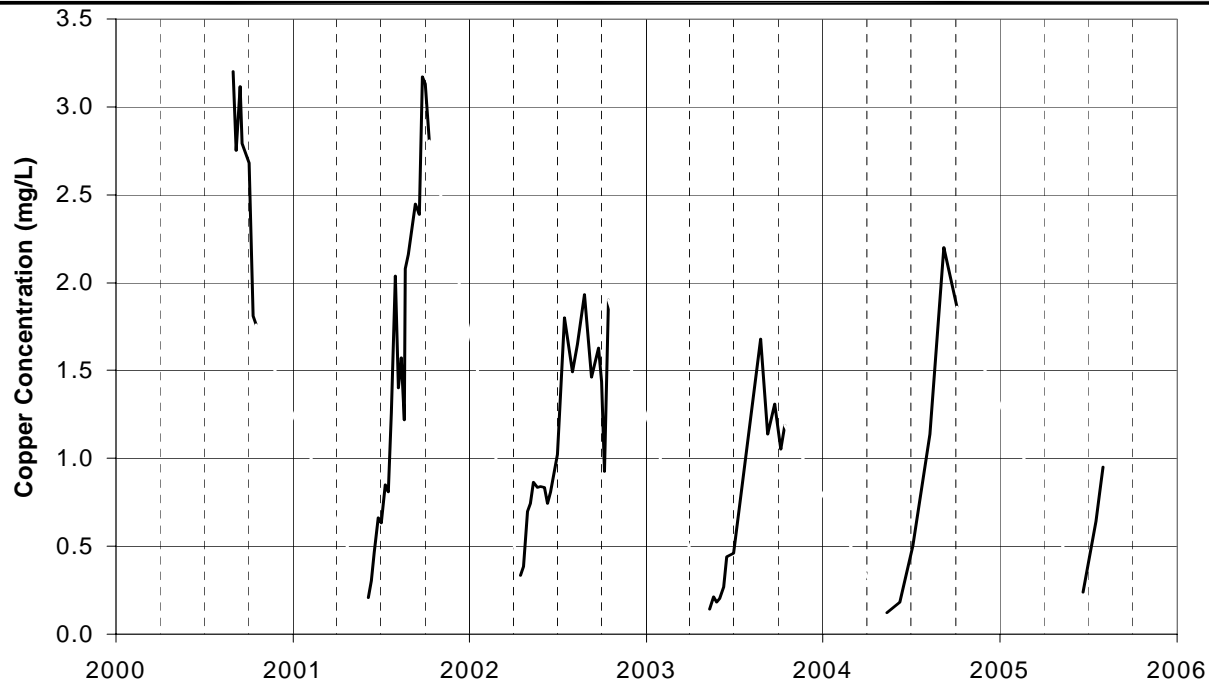
By: KPA

Source: f:\1149_046\5-year review\fig3.xls



FIGURE:

7-12



— Load - - - Percent of WF5.5

TIMELINE

<i>REMEDY MILESTONES</i>		PUMPHOUSE FAULT TO SDI IN SEPTEMBER		INTERCEPTOR DRAINS CONSTRUCTED		
<i>MINE POOL</i>	LATE SEASON RELEASES	MINOR RELEASES	ELEVATION MAINTAINED NEAR REYNOLDS INVERT	ELEVATION MAINTAINED BELOW CHANDLER ADIT	NO RELEASES	NO RELEASES
<i>SNOW PACK</i>	67%	108%	10%±	59%	102%	135%

NOTES:

- 1.) COPPER IN THE TOTAL FORM.
- 2.) 2005 DATA SET IS THROUGH JULY 31.

File: R:\1149_046.BTM\5yearreview\FIG3-28.DWG

SUMMITVILLE MINE SUPERFUND SITE FIVE-YEAR REVIEW



COPPER CONCENTRATION AND LOAD AT STATION WF2.5

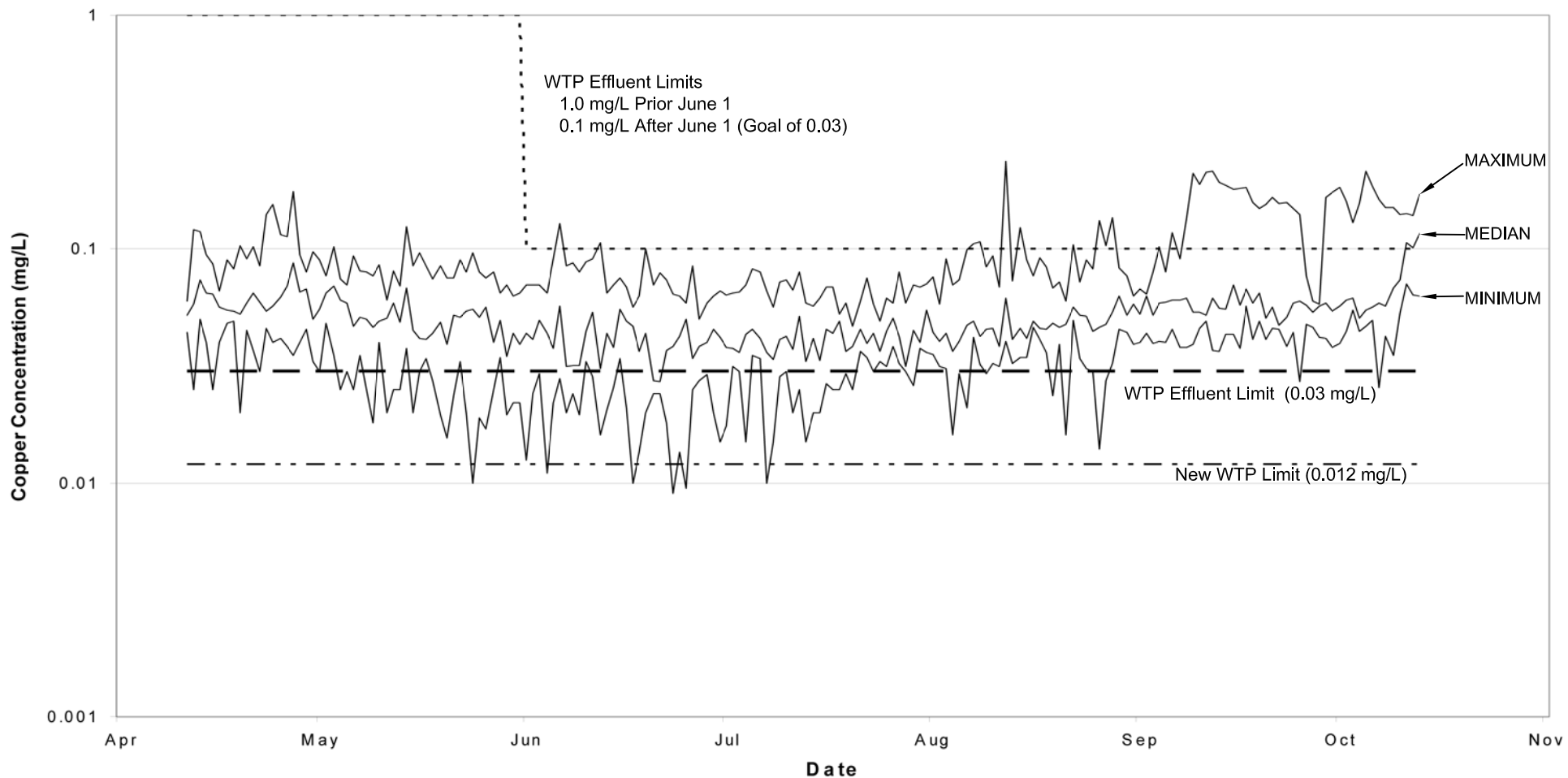
FIGURE:

7-13

Date: 08/22/05

By: KPA

Source: f:\1149_044\database support\data requests\copper_wf5.5_chart.xls



NOTES:

- 1.) Daily minimum, maximum and median effluent copper concentrations for the period of 2000 to 2005 displayed.
- 2.) Copper Concentration in the Total Form.
- 3.) 2005 Data through July 31.

File: R:\1149_046.BTM\FIGS3.DWG

SUMMITVILLE MINE SUPERFUND SITE
 FIVE-YEAR REVIEW

DAILY EFFLUENT SUMMARY
 STATISTICS FOR 2000 TO
 2005

Date: 08/16/05

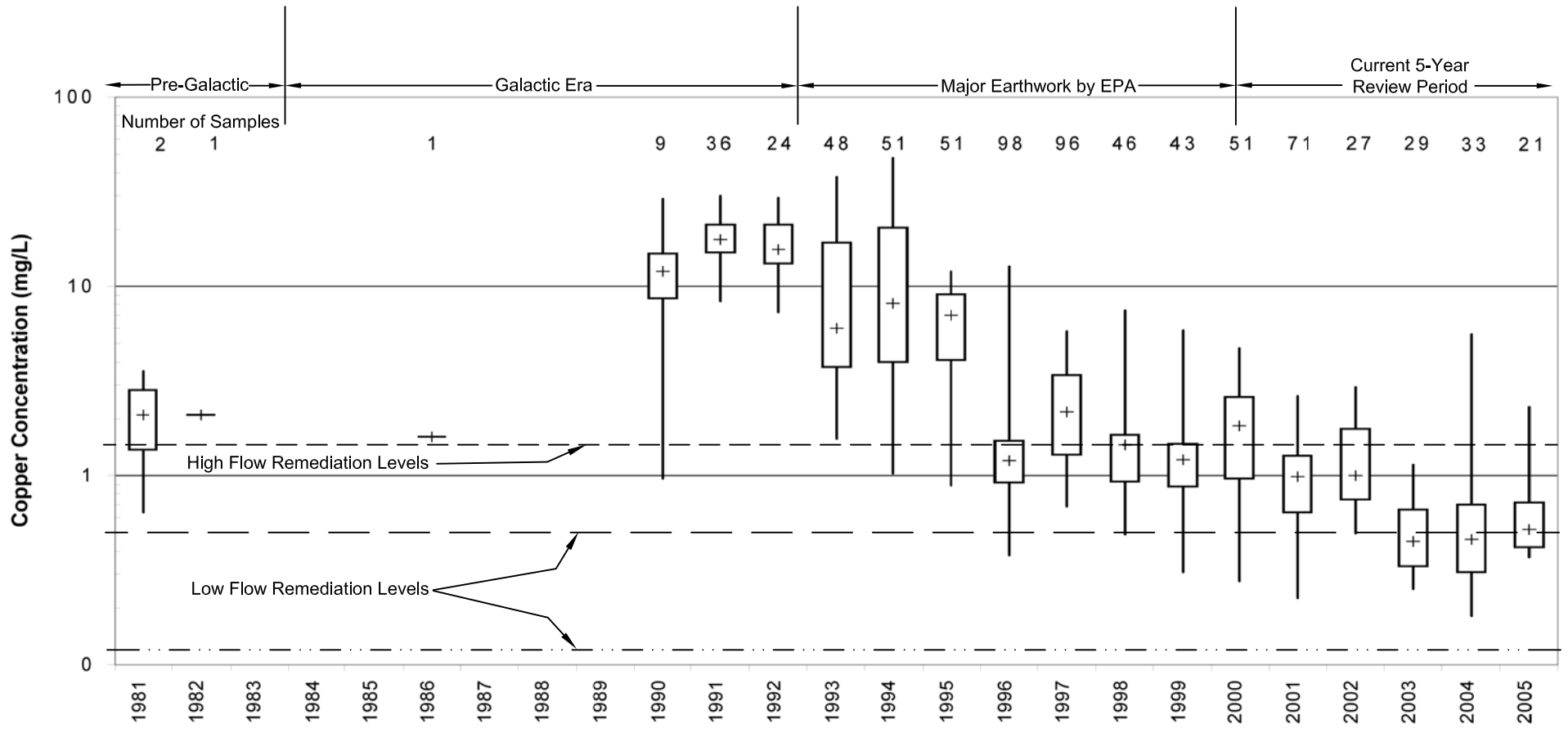
By: KPA

Source: G:\1149\027\phase_03\RI_Report\Prelim Draft\2000_GW_LV_DB.wb3



FIGURE:

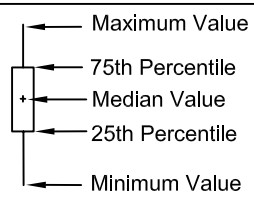
7-14



Year

REYNOLDS ADIT PLUGGED (1981-1983)
 CHANDLER ADIT FINAL PLUGGING (1990-1995)
 MINE PITS FILLED AND CAPPED (1996-1999)
 SURFACE WATER FLOWS CONSOLIDATED TO SDI (2000-2002)
 HLP CAPPING COMPLETED (2003-2005)
 SITE-WIDE REVEGETATION COMPLETED (2003-2005)

Legend



Note:
Copper Concentration
in the Total Form

File: R:\1149_046.BTM\FIGS3.DWG

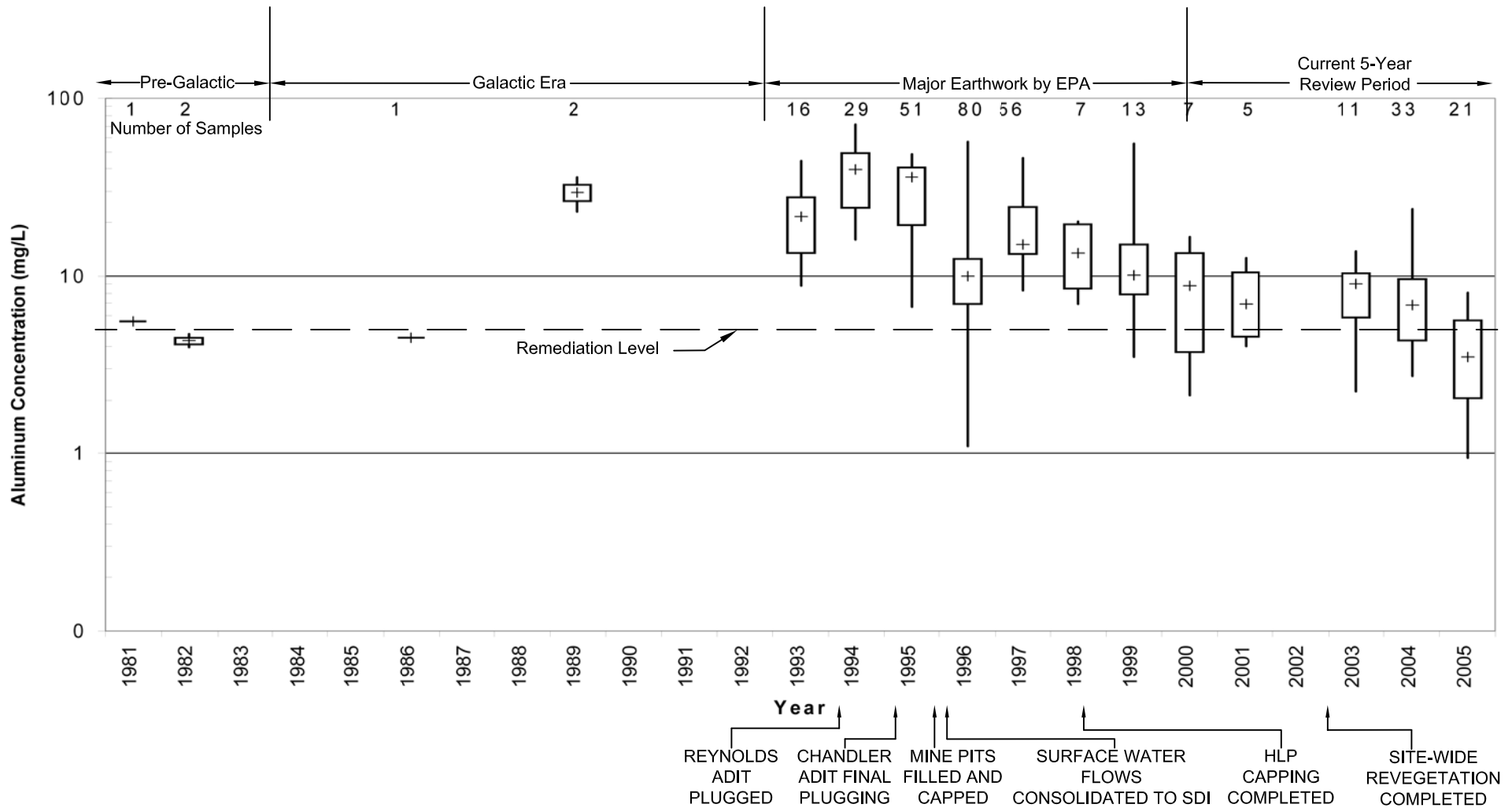
SUMMITVILLE MINE SUPERFUND SITE
FIVE-YEAR REVIEW

BOX-WHISKER PLOT OF
COPPER CONCENTRATIONS
AT WF5.5

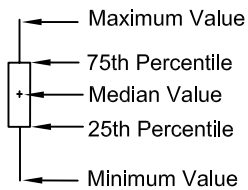
Date: 08/16/05 By: KPA
Source: G:\1149\027\phase_03\RL_Report\Prelim Draft\2000_GW_LV_DB.wb3



7-15



Legend



File: R:\1149_046.BTM\FIGS3.DWG

SUMMITVILLE MINE SUPERFUND SITE
FIVE-YEAR REVIEW



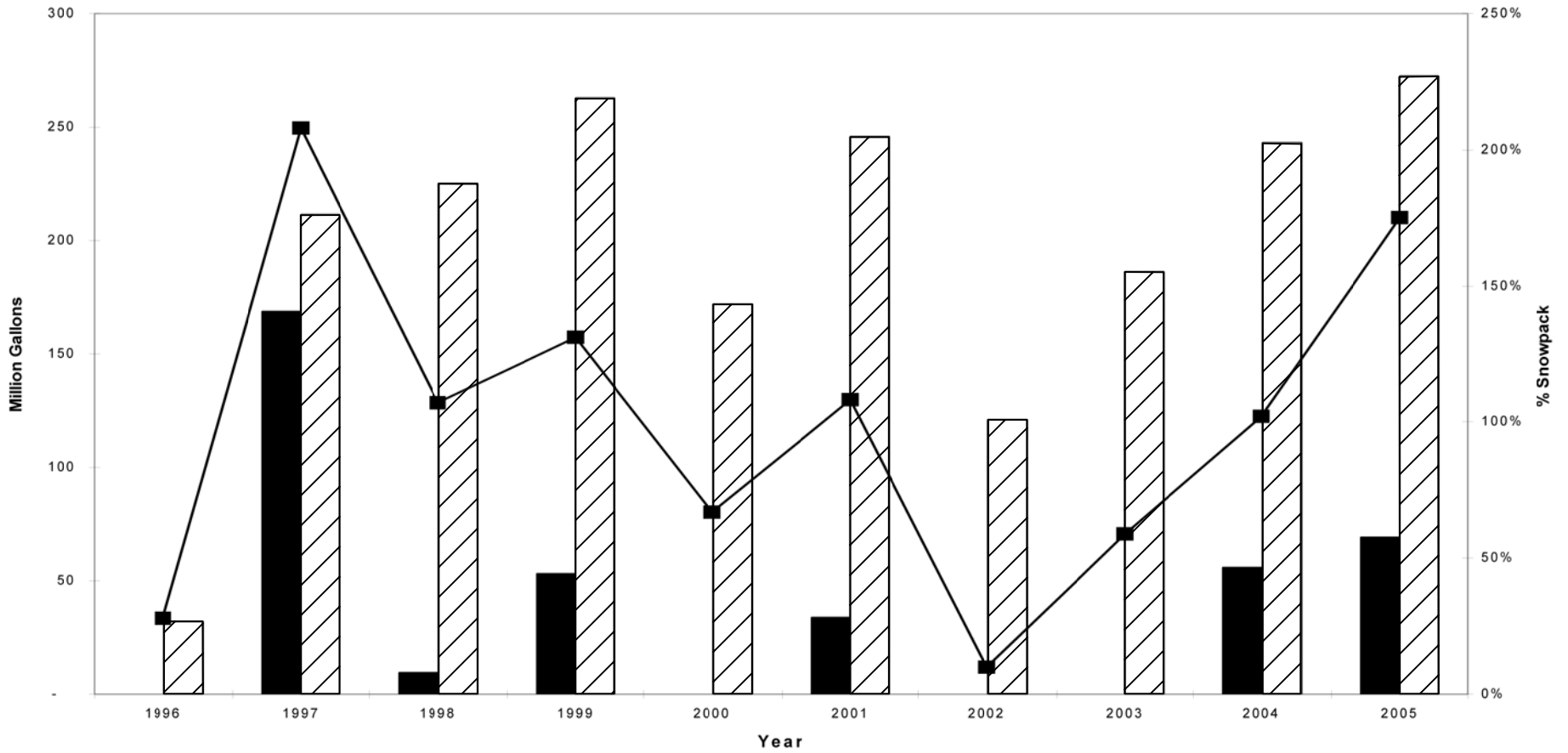
BOX-WHISKER PLOT OF
ALUMINUM
CONCENTRATIONS AT WF5.5

7-16


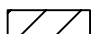

Date: 08/16/05

By: KPA

Source: G:\1149\027\phase_03\RI_Report\Prelim Draft\2000_GW_LV_DB.wb3



Legend

-  Released from SDI & Turnouts
-  Treated by WTP
-  Snowpack

Note:
2005 Water Treated by WTP is Projected Through October.

File: R:\1149_046.BTM\FIGS3.DWG

SUMMITVILLE MINE SUPERFUND SITE
FIVE-YEAR REVIEW

WATER RELEASED FROM SDI
& TURNOUTS VS WATER
TREATED BY WTP

Date: 08/16/05

By: KPA

Source: G:\1149\027\phase_03\RI_Report\Prelim Draft\2000_GW_LV_DB.wb3



FIGURE:

7-17