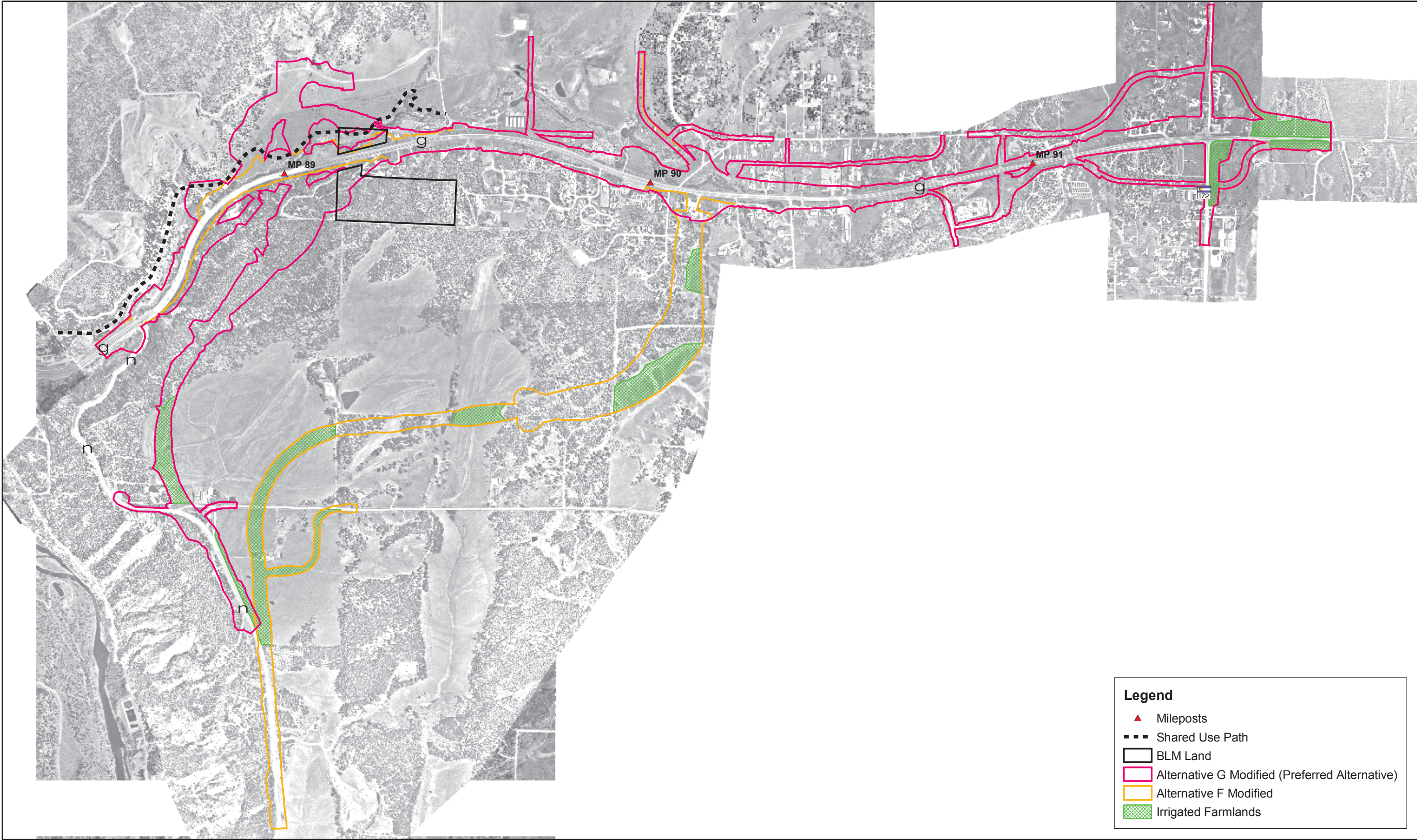


Y:\GIS\Projects\6844423_US160_EA\05_maps\fig4-2-1_IrrigatedFarmlands.mxd JFR 01/02/2006

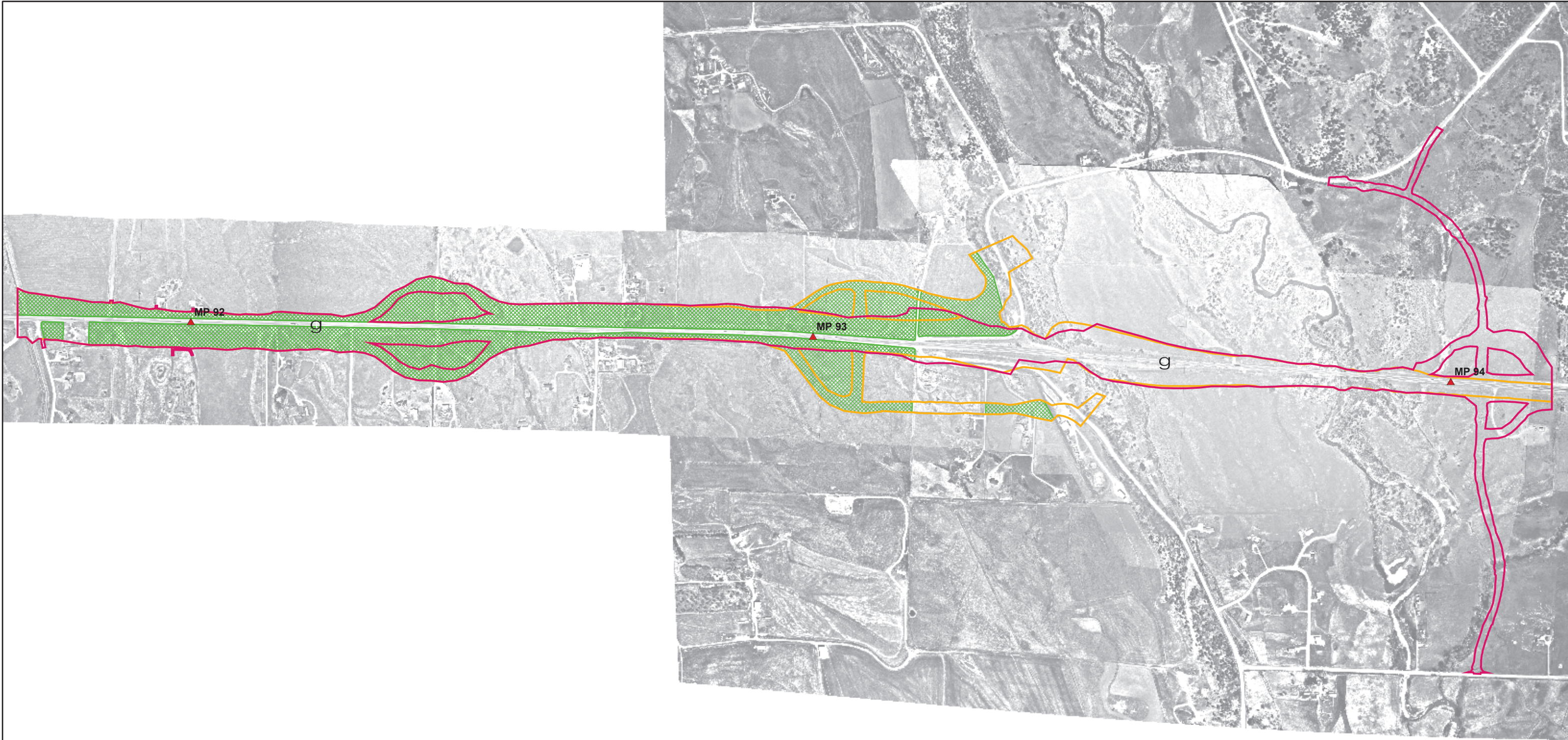


Legend

- ▲ Mileposts
- - - Shared Use Path
- BLM Land
- ▭ Alternative G Modified (Preferred Alternative)
- ▭ Alternative F Modified
- ▨ Irrigated Farmlands



Y:\GIS\Projects\6844423_US160_EA05_maps\fig4-2-1_IrrigatedFarmlands.mxd JFR 01/02/2006

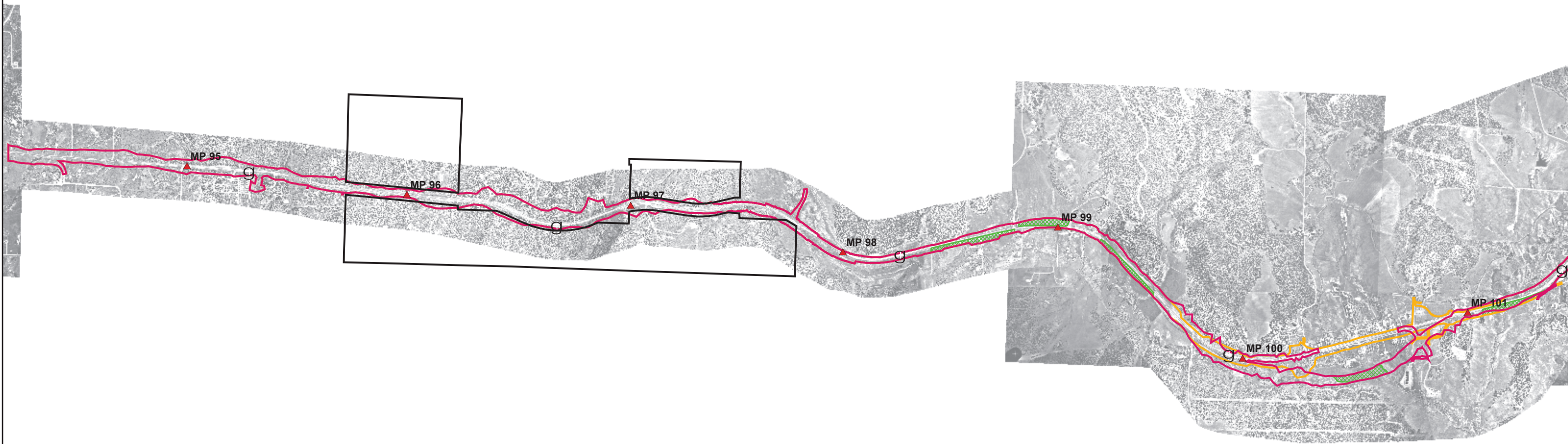


Legend

- ▲ Mileposts
- Alternative C (Preferred Alternative)
- Alternative A
- Irrigated Farmlands



Y:\GIS\Projects\6844423_US160_EA\05_maps\fig4-2-1_IrrigatedFarmlands.mxd JFR 01/02/2006



Legend

- ▲ Mileposts
- BLM Land
- ▭ Alternative H (Preferred Alternative)
- ▭ Alternative C
- ▨ Irrigated Farmlands





Legend

- ▲ Mileposts
- ▭ Alternative B (Preferred Alternative)
- ▭ Alternative A
- ▨ Irrigated Farmlands

Y:\GIS\Projects\6844423_US160_EA05_maps\fig4-2-1_IrrigatedFarmlands.mxd JFR 01/02/2006



Y:\Gis\Projects\6844423_US160_EA\05_maps\fig3-18-1_shared_use_path.mxd JFR 01/02/2006

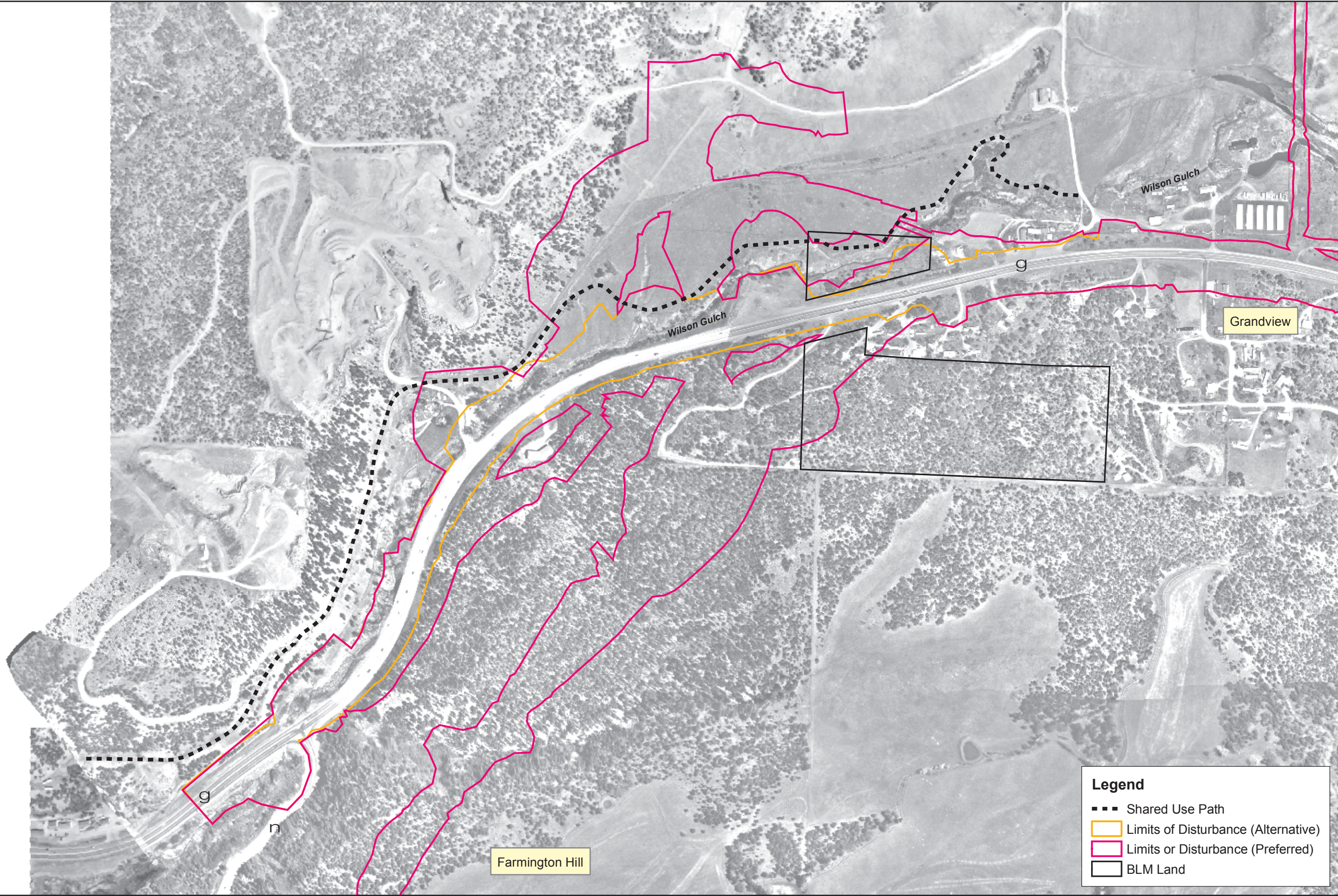
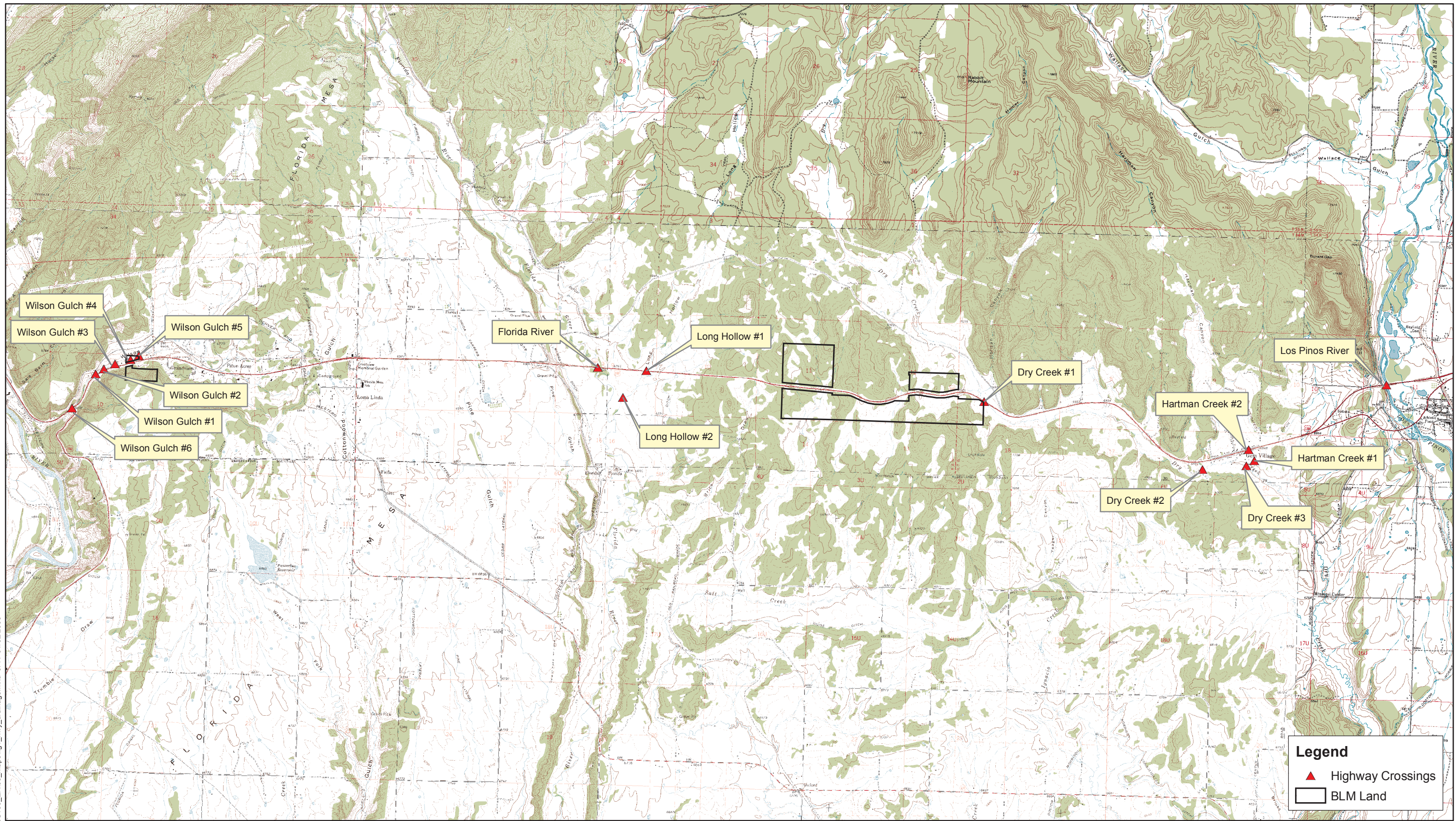


Figure 4.4.1
Proposed Shared
Use Path Alignment



Y:\Gis\Projects\6844423_US160_EA05_maps\fig1_hwy_drainage.mxd JFR 01/02/2006

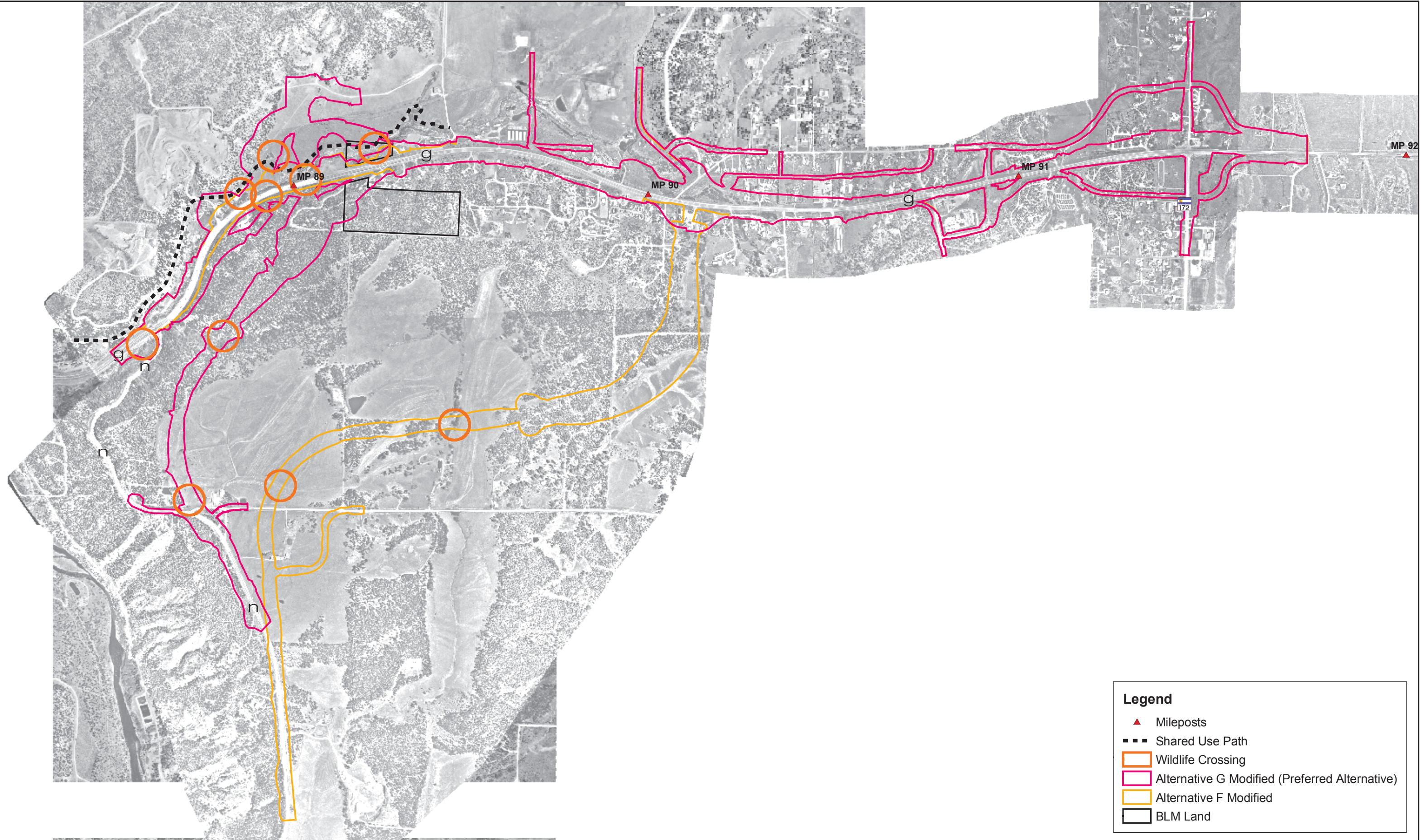


US 160 Environmental Impact Statement

Figure 4.8.1
Future Water
Crossings



Y:\GIS\Projects\6844423_US160_EAO5_maps\fig4-11-4_wldf_crossings.mxd KCS 01/02/2006

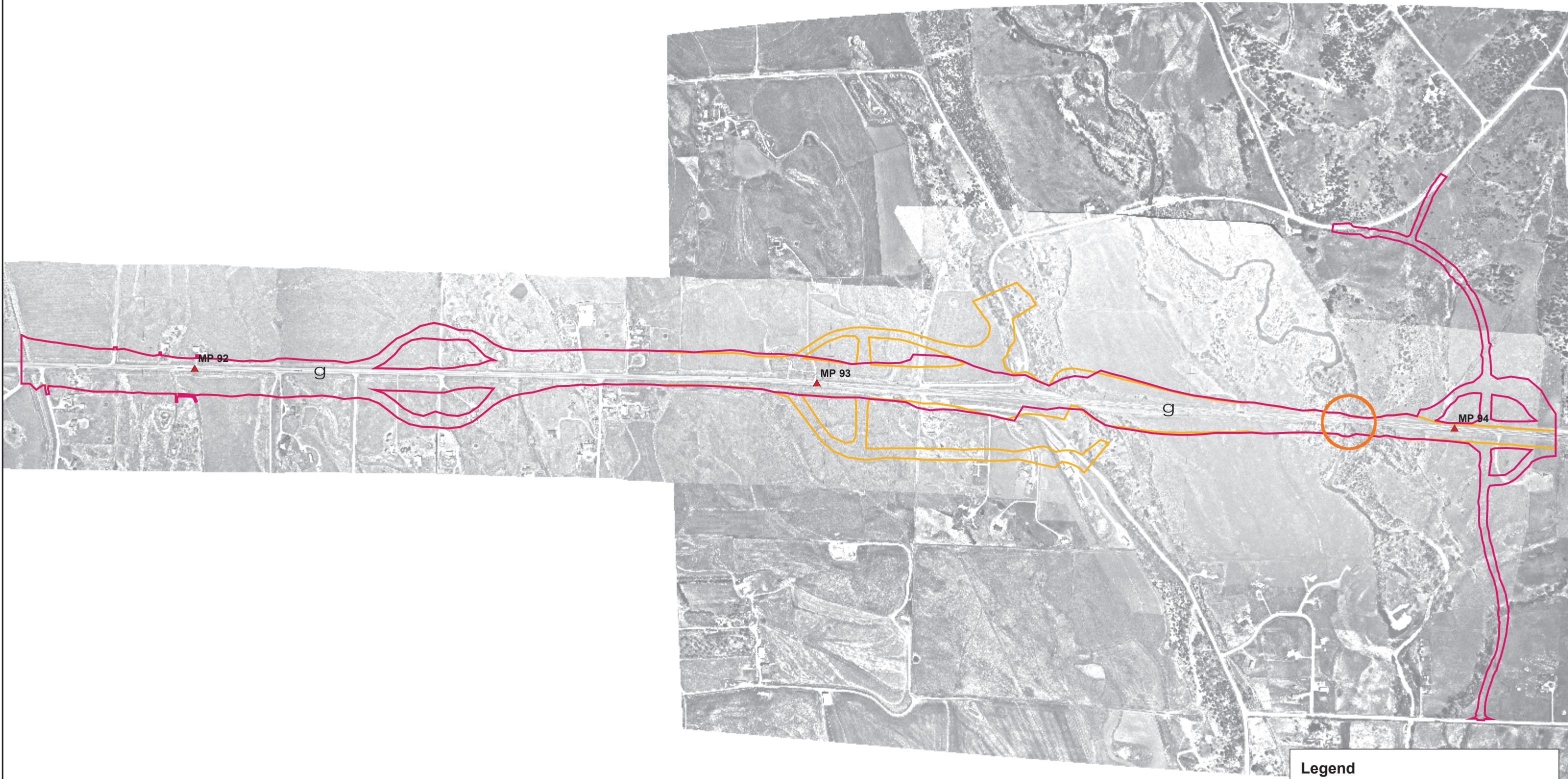


Legend

- ▲ Mileposts
- Shared Use Path
- Wildlife Crossing
- ▭ Alternative G Modified (Preferred Alternative)
- ▭ Alternative F Modified
- ▭ BLM Land

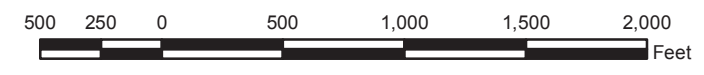


Y:\GIS\Projects\6844423_US160_EA05_maps\fig4-11-4_wild_crossings.mxd KCS 01/02/2006




Legend

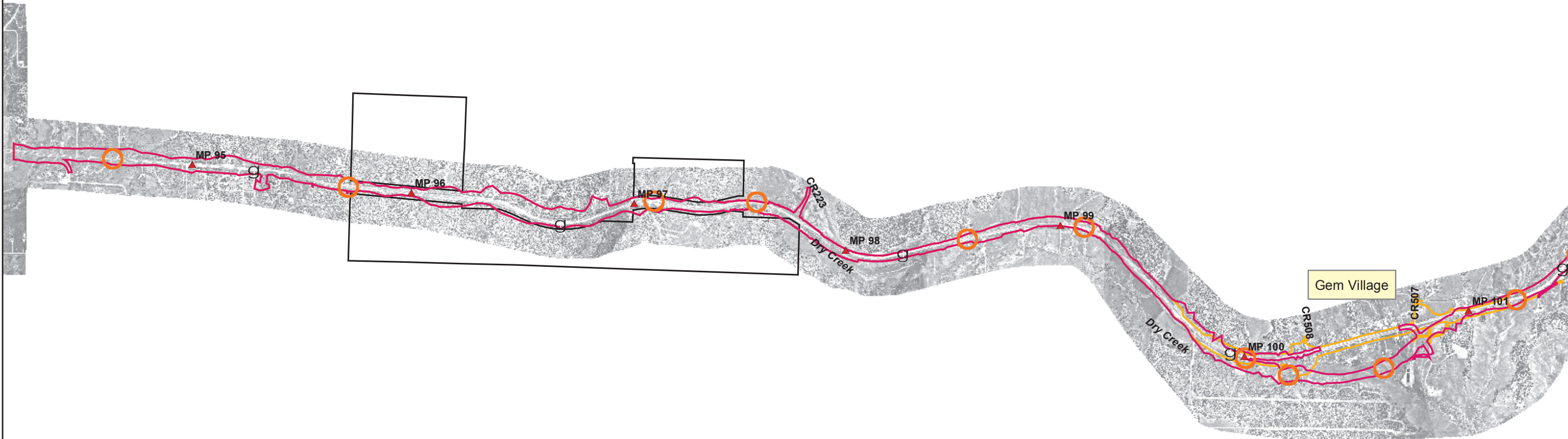
- ▲ Mileposts
- Wildlife Crossing
- Alternative C (Preferred Alternative)
- Alternative A



US 160 Environmental Impact Statement
Figure 4.11.2
Wildlife Crossings
 Florida Mesa & Valley Section

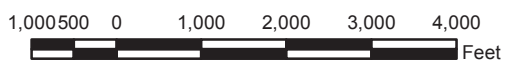


Y:\GIS\Projects\6844423_US160_EAO5_maps\fig4-11-4_wldf_crossings.mxd KCS 06/22/2005



Legend

- Mileposts
- Wildlife Crossing
- Alternative H (Preferred Alternative)
- Alternative C
- BLM Land

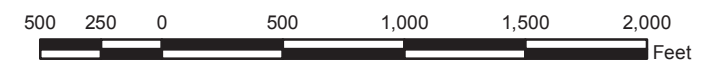


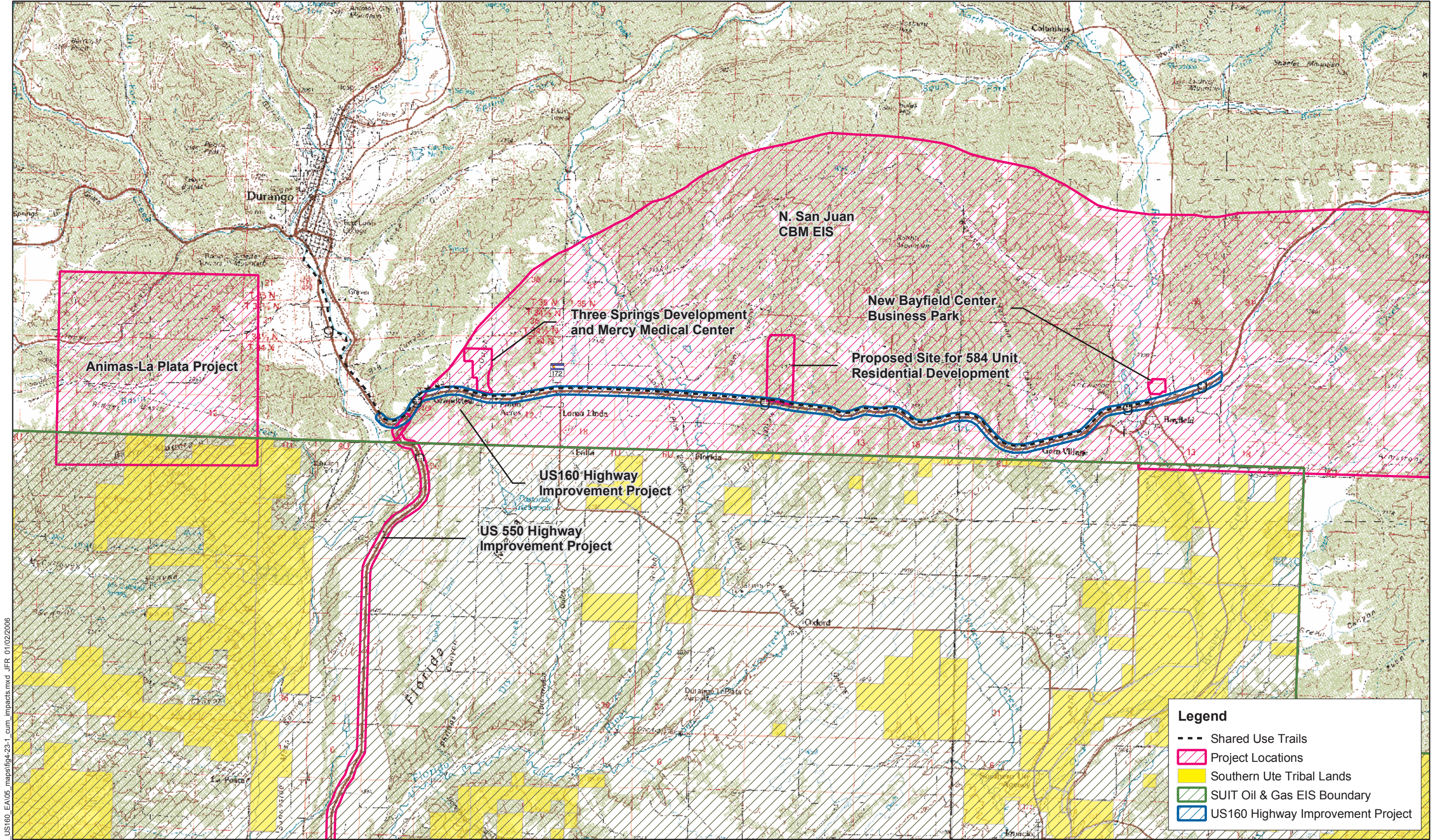
Y:\GIS\Projects\6844423_US160_EA05_maps\fig4-11-4_wild_crossings.mxd KCS 01/02/2006



Legend

- ▲ Mileposts
- Wildlife Crossing
- Alternative B (Preferred Alternative)
- Alternative A

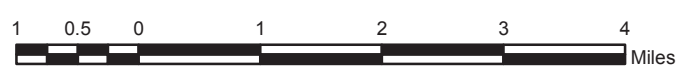


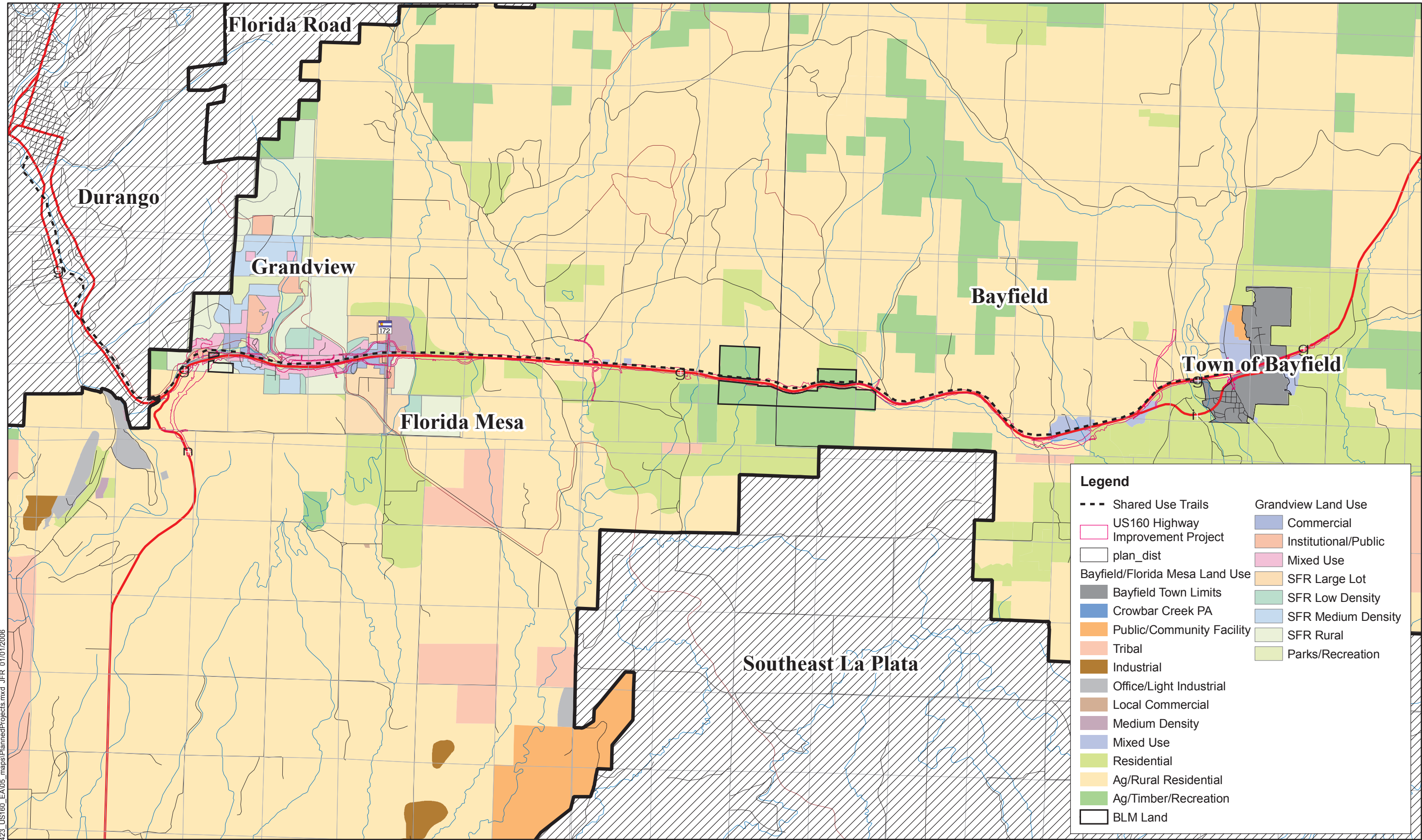


Legend

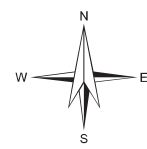
- - - Shared Use Trails
- Project Locations
- Southern Ute Tribal Lands
- SUIT Oil & Gas EIS Boundary
- US160 Highway Improvement Project

Y:\Gis\Projects\6844423_US160_EA\05_maps\fig4-23-1_cum_impacts.mxd JFR 01/02/2006





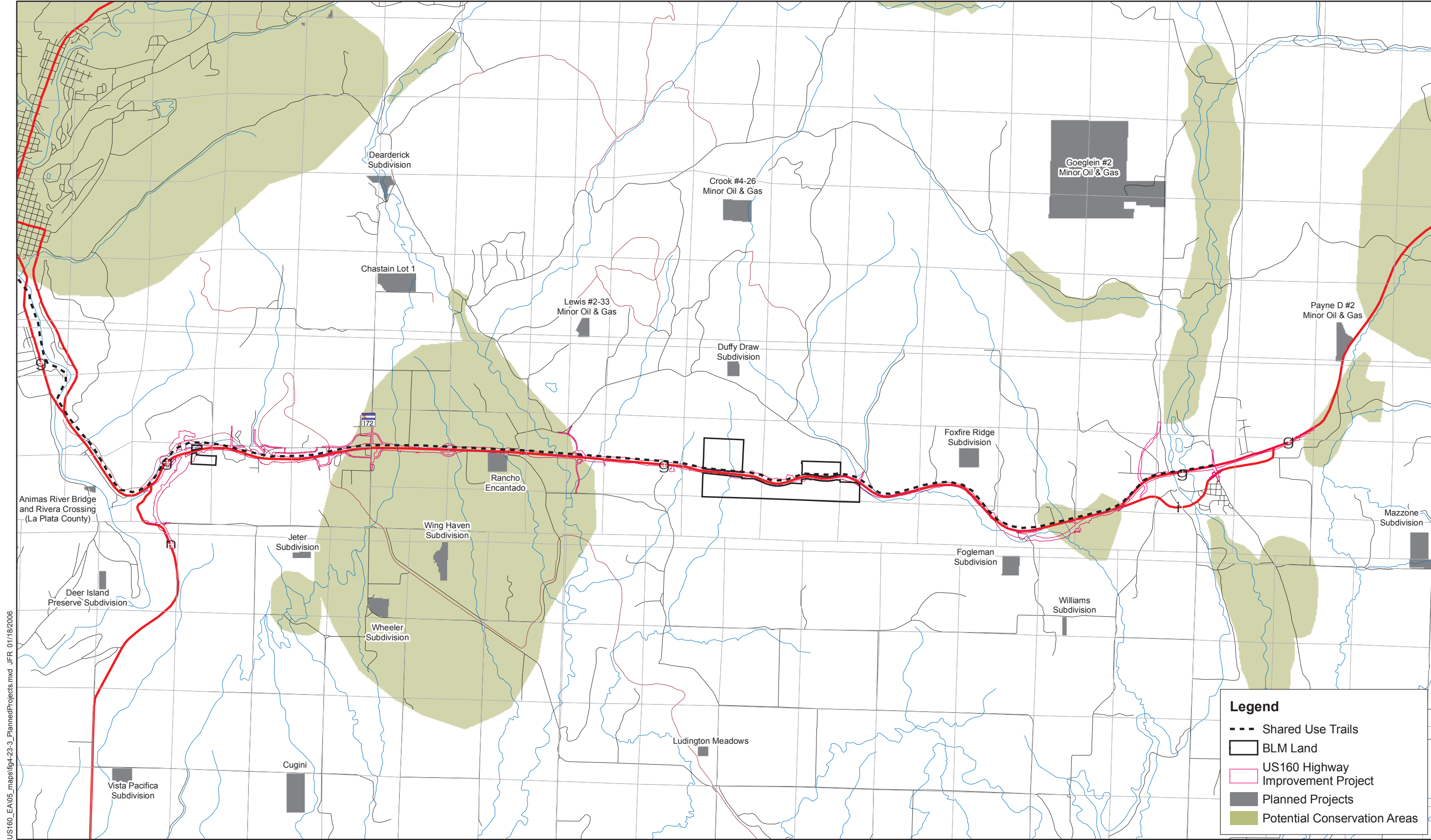
Y:\Gis\Projects\6844423_US160_EA\05_maps\PlannedProjects.mxd JFR 01/01/2008



US 160 Environmental Impact Statement

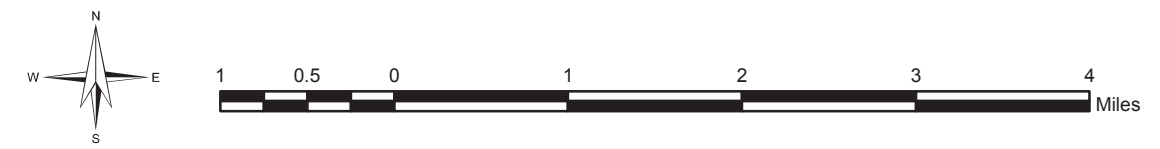
Figure 4.23.2
US 160 Corridor Land Use





Legend

- Shared Use Trails
- BLM Land
- ▭ US160 Highway Improvement Project
- Planned Projects
- Potential Conservation Areas



Y:\GIS\Projects\684423_US160_EA05_maps\fig4-23-3_PlannedProjects.mxd JFR 01/18/2006