

APPENDIX A - STATEWIDE COMPREHENSIVE OUTDOOR RECREATION ASSESSMENT (SCORA)

Overview

The Statewide Comprehensive Outdoor Recreation Assessment (SCORA) is the data collection component of the Colorado Statewide Comprehensive Outdoor Recreation Plan (SCORP).

SCORA provides primarily raw data without interpretation which will help illustrate the availability of outdoor recreation opportunities (supply) and the public's desire for outdoor recreation opportunities (demand). The supply of outdoor recreation opportunities is described by an inventory of public land and facilities. Demand for outdoor recreation is characterized through the use of demographic and recreational use data.

Planning Framework

The SCORA focuses on a 15-year planning period from 2000 to 2015. The SCORA evaluates historical demographic and recreation trends which will help forecast future recreational demand. Collected data involves three categories:

- 1) Trend data focusing on demographics, visitation, registration, and license information
- 2) Benchmark demographic data from the 2000 Decennial Census and single-year recreational use data
- 3) Demographic forecasts to project future recreational demand

Availability

The complete SCORA document including the tables, figures, and maps listed below, can be accessed via the Colorado State Parks website at: www.parks.state.co.us

Complete Listing of Tables, Figures and Maps Found in SCORA

TABLES FOUND IN SCORA DOCUMENT

NUMBER	TITLE
TABLE 1.	COUNTY POPULATION 1998-2002
TABLE 2.	COUNTY POPULATION GROWTH BY PERCENTAGE 1998-2002
TABLE 3a.	COUNTY GROWTH RANKED BY AVERAGE PERCENTAGE 1998-2002
TABLE 3b.	POPULATION GROWTH RANKED BY COUNTY 1998-2002
TABLE 4.	SCORP REGION POPULATION 1998-2002
TABLE 5.	SCORP REGION POPULATION GROWTH BY PERCENTAGE 1998-2002
TABLE 6.	STATE PARK VISITATION AND REVENUE 1998-2002
TABLE 7.	STATE PARK REGISTRATIONS: BOAT, OHV, AND SNOWMOBILE 1998-2002
TABLE 8.	DIVISION OF WILDLIFE RESIDENT LICENSES 1998-2002
TABLE 9.	DIVISION OF WILDLIFE NON-RESIDENT LICENSES 1998-2002
TABLE 10.	DIVISION OF WILDLIFE RESIDENT LICENSE INCOME 1997-2001
TABLE 11.	DOW NON-RESIDENT LICENSE INCOME 1997-2001
TABLE 12.	NATIONAL PARK SERVICE VISITATION 1998-2002
TABLE 13.	COLORADO SKI AREA VISITATION 1998-2002
TABLE 14.	BLM FEE DEMO SITE VISITS AND REVENUE 1998-2002
TABLE 15.	U.S. FOREST SERVICE FEE DEMO SITE VISITS AND REVENUE 1998-2002

TABLE 16.	VISITATION COLORADO THREE 14,000 FOOT PEAKS (14ers)	TABLE 27.	OPEN SPACE ACQUISITION RANKED BY COUNTY
TABLE 17.	LOCAL GOVERNMENT LAND AND FACILITIES BY SCORP REGION	TABLE 28.	PUBLIC LAND PER PERSON BY SCORP REGION
TABLE 18.	DEMOGRAPHIC SUMMARY STATE OF COLORADO 2002	TABLE 29a.	AGRICULTURAL LAND BY COUNTY
TABLE 19.	DEMOGRAPHIC PROFILE STATE OF COLORADO 2002	TABLE 29b.	TOTAL AGRICULTURAL LAND RANKED BY COUNTY
TABLE 20.	ECONOMIC PROFILE STATE OF COLORADO 2000	TABLE 29c.	PERCENTAGE OF AGRICULTURAL LAND RANKED BY COUNTY
TABLE 21a.	COLORADO COUNTIES AGE PROFILE 2002	TABLE 29d.	AGRICULTURAL LAND PER PERSON BY RANKED COUNTY
TABLE 21b.	COLORADO AGE PROFILE RANKED BY COUNTY	TABLE 30.	AGRICULTURAL LAND BY SCORP REGION
TABLE 22.	COLORADO AGE PROFILE BY SCORP REGION	TABLE 31.	STATE PARK DESCRIPTIONS
TABLE 23a.	POPULATION, HOUSING UNITS, DENSITY, LAND, WATER BY COUNTY 2002	TABLE 32.	STATE PARK FACILITIES
TABLE 23b.	POPULATION AND HOUSING RANK BY COUNTY	TABLE 33.	INCREASED VISITATION ON THE BASIS OF PROPOSED FEATURES BY SCORP REGION
TABLE 24.	FEDERAL PUBLIC LAND BY COUNTY AND SCORP REGION	TABLE 34.	INFORMATION SOURCES USED WHEN PLANNING LEISURE ACTIVITIES
TABLE 24a.	PUBLIC LAND BY COUNTY	TABLE 35.	MOTIVATIONS FOR CHOOSING OUT-OF-HOME LEISURE ACTIVITIES
TABLE 24b.	PERCENT PUBLIC LAND BY COUNTY	TABLE 36.	FIRST-CHOICE OUTDOOR RECREATION DESTINATIONS
TABLE 24c.	FEDERAL PUBLIC LAND BY COUNTY	TABLE 37a.	OUTDOOR RECREATION ACTIVITIES PARTICIPATED IN DURING THE LAST 12 MONTHS
TABLE 24d.	LOCAL GOVERNMENT PUBLIC LAND BY COUNTY	TABLE 37b.	PARTICIPATION IN LEISURE ACTIVITIES (AVERAGE NUMBER OF TIMES PER MONTH)
TABLE 25a.	PUBLIC LAND BY SCORP REGION	TABLE 38.	USDA FOREST SERVICE RECREATION FACILITIES IN COLORADO BY COUNTY
TABLE 25a.	PERCENT PUBLIC LAND BY SCORP REGION	TABLE 39.	USFS TRAILS BY COUNTY 2003
TABLE 25a.	FEDERAL PUBLIC LAND BY SCORP REGION	TABLE 40.	USFS TRAILS BY TOURISM REGION 2003
TABLE 26a.	PUBLIC LAND RANKED BY COUNTY		
TABLE 26a.	PUBLIC LAND PER PERSON RANKED BY COUNTY		

TABLE 41.	BLM SYSTEM TRAILS 2003	FIGURES FOUND IN SCORA DOCUMENT	
TABLE 42.	UNITED STATES FOREST SERVICE (USFS) VISITATION 2001	NUMBER	TITLE
TABLE 43a.	SCORP LOCAL GOVERNMENT(LG) SURVEY 2003 LAND AND FACILITIES BY SCORP REGION	FIGURE 1.	COLORADO POPULATION 1998-2002
TABLE 43b.	SCORP LOCAL GOVERNMENT(LG) SURVEY 2003 LAND AND FACILITIES BY COUNTY	FIGURE 2.	COLORADO POPULATION ANNUAL PERCENTAGE CHANGE 1998-2002
TABLE 44a.	SCORP LOCAL GOVERNMENT(LG) SURVEY 2003 AGENCY CHARACTERISTICS BY SCORP REGION	FIGURE 3a.	SCORP REGION POPULATION 1998-2002 (BAR GRAPH)
TABLE 44b.	SCORP LG SURVEY 2003 PART 1 - AGENCY CHARACTERISTICS STATEWIDE	FIGURE 3b.	SCORP REGION POPULATION 1998-2002 (LINE GRAPH)
TABLE 45.	SCORP LG SURVEY 2003 PART 2 - PRIORITY ISSUES - RAW SCORES	FIGURE 4.	SCORP REGION GROWTH BY PERCENTAGE 1998-2002 (BAR GRAPH)
TABLE 46.	SCORP LG SURVEY 2003 PART 3 - PRIORITY NEEDS - RAW SCORES	FIGURE 4.	SCORP REGION GROWTH BY PERCENTAGE 1998-2002 (LINE GRAPH)
TABLE 47.	SCORP LG SURVEY 2003 PART 2 - PRIORITY ISSUES - RANKED SCORES	FIGURE 5.	STATE PARK VISITATION 1998 - 2002
TABLE 48.	SCORP LG SURVEY 2003 PART 3 - PRIORITY NEEDS - RANKED SCORES	FIGURE 6.	STATE PARK REVENUE 1998-2002
TABLE 49.	POPULATION FORECASTS BY COUNTY 2000-2015	FIGURE 7.	STATE REGISTRATIONS 1998-2002
TABLE 50.	POPULATION FORECASTS - PERCENTAGE CHANGE BY COUNTY 2000-2015	FIGURE 8a.	RESIDENT HUNTING LICENSES SOLD 1997-2001
TABLE 51.	POPULATION FORECASTS BY SCORP REGION 2000-2015	FIGURE 8b.	NON-RESIDENT HUNTING LICENSES SOLD 1997-2001
TABLE 52.	POPULATION FORECASTS - PERCENTAGE CHANGE BY SCORP REGION 2000-2015	FIGURE 9.	FISHING LICENSES SOLD 1997-2001
TABLE 53.	FORCAST COLORADO AGE PROFILE CHANGE 2000-2015	FIGURE 10.	DIVISION OF WILDLIFE LICENSE REVENUE 1997-2001
		FIGURE 11.	NATIONAL PARK SERVICE VISITATION IN COLORADO 1998-2002
		FIGURE 12.	NATIONAL PARK SERVICE VISITATION BY AREA 1998-2002
		FIGURE 13.	COLORADO SKI AREA VISITATION 1998-2002
		FIGURE 14.	COLORADO BLM FEE DEMO SITE VISITATION 1998-2002
		FIGURE 15.	COLORADO BLM FEE DEMO SITE REVENUE 1998-2002
		FIGURE 16.	VISITATION COLORADO THREE 14,000 FOOT PEAKS (14ers)
		FIGURE 17.	COLORADO ETHNICITY 2000

- FIGURE 18. COLORADO AGE PROFILE 2000
- FIGURE 19. PUBLIC LAND BY SCORP REGION
- FIGURE 20. CHANGE IN COLORADO AGE PROFILE 2000-2015

MAPS FOUND IN SCORA DOCUMENT

NUMBER TITLE

- MAP 1. COLORADO SCORP REGIONS
- MAP 2a. COLORADO COUNTIES
- MAP 2b. TOURISM REGIONS
- MAP 3. GEOGRAPHIC FEATURES OF COLORADO
- MAP 4. COLORADO GEOGRAPHY
- MAP 5. COLORADO STATE PARKS
- MAP 6. COLORADO NATURAL AREAS
- MAP 7. COLORADO DIVISION OF WILDLIFE
- MAP 8. COLORADO ELK RANGE
- MAP 9. COLORADO MULE DEER RANGE
- MAP 10. COLORADO GOLD MEDAL WATERS
- MAP 11. COLORADO STATE LAND BOARD
- MAP 12. COLORADO TRANSPORTATION AND ACCESS COORIDORS
- MAP 13. COLORADO POPULATION DENSITY
- MAP 14. COLORADO VEGETATION
- MAP 15. COLORADO WETLANDS AND RIPARIAN AREAS
- MAP 16. COLORADO FIRE DANGER
- MAP 17. COLORADO LAND OWNERSHIP
- MAP 18. COLORADO FEDERAL LANDS
- MAP 19. COLORADO NATIONAL PARK SERVICE LANDS (NPS)
- MAP 20. COLORADO US FOREST SERVICE LANDS (USFS)

- MAP 21. COLORADO BUREAU OF LAND MANAGEMENT LANDS (BLM)
- MAP 22. COLORADO BUREAU OF RECLAMATION LANDS
- MAP 23. COLORADO 14ER'S
- MAP 24. COLORADO'S SKI RESORTS
- MAP 25. COLORADO PRIVATE LANDS

Purpose

The Statewide Comprehensive Outdoor Recreation Plan (SCORP) Local Government Survey was conducted by Colorado State Parks as a key part of Colorado's 2003 SCORP update. The SCORP update is required for Colorado's continued eligibility for federal Land and Water Conservation Fund (LWCF) allocations. The primary goal of the SCORP is to direct each state's use of its LWCF apportionment, which is appropriated annually by Congress. This goal is reached through an analysis of outdoor recreation issues of statewide importance, including identification of those issues that Colorado will address through LWCF funding. Part of the analysis must include an evaluation of demand for and supply of outdoor recreation resources and facilities, and must demonstrate public participation in identifying needs and priorities. The Local Government Survey is a crucial part of these analyses. The results from the survey will be a basis for determining the use of Colorado's LWCF allocations, a significant portion of which are used to fund local government parks and recreation facilities through a grants program administered by Colorado State Parks.

Overview of Local Government Survey

Originally, a letter explaining the Local Government Survey and its importance to Colorado's SCORP was mailed out in early February, 2003 to several hundred local governments statewide, including all municipalities and counties, and special districts with recreation missions. The contact and mailing information for the various local governments was obtained through the Colorado Department of Local Affairs' (DoLA) "County, Municipality, And Special District Mailing List," updated February, 2003. The survey letter requested the local government's participation in the survey, and provided instructions for registering and completing the survey on the Internet. The letter also noted that the survey could be downloaded from the survey's Internet site and completed in a hardcopy version, which could then be mailed to State Parks. If a particular local government did not have access to the Internet, contact information was provided so that a request could be made to have a survey faxed or mailed to the local government for completion. Wyant Data Systems, based in Louisville, CO, was contracted to format the survey's Internet-based questions and tabulation of survey responses.

The survey contained a total of 124 questions that were split into three components addressing various issues related to local government parks and recreation. Questions 1 through 36 focused on data/inventory of the local government's parks and recreation operations, such as number and acreage of parks managed by the agency, and total dollar value of capital improvement planned for the five period 2003-08. Questions 37 through 74 asked about the local government's parks and recreation priority issues in areas such as management, visitor services and funding. And lastly, questions 75 through 124 asked about the local government's parks and recreation priority capital investment needs, such as facilities for specific recreation activities and acquisition of open space, parks or trail corridors.

Obtaining Survey Results

A total of 398 counties, municipalities and those special districts that deliver recreation services were identified as candidates for the survey. There were a total of 250 completed surveys submitted, a completion rate of 63%. The majority of local governments that did not complete or submit surveys primarily did so because they do not manage or provide park or recreation services. This group constituted several counties, particularly ones that are more sparsely populated, and many small towns.

In order to attain the final 250 official responses to the survey, however, it was necessary to perform targeted follow-up calls to many local governments after the stated deadline for submission, which was March 3, 2003. Local governments that did not complete the survey by the original deadline received the targeted follow-up calls, which was based on their overall ranking as a result of population size. There were three rankings for each group (city or county) – 1, 2 or 3. The 1's had the largest populations, and were, thus, considered the most important, in terms of completing the survey. For cities, all those with populations of 10,000 people or greater were considered 1's, while for counties, all those with populations of 50,000 people or greater were 1's. All local governments ranked as a 1 eventually submitted a completed survey.

The next group in the rankings - the 2's – were also considered an important component of the overall survey results, though they have smaller population sizes than the 1's. For cities, all those with populations of 3,000 to 10,000 people were 2's, while for counties it was those with populations of 10,000 to 50,000 people. Over 90% of cities and 75% of counties ranked as a 2 submitted a completed survey.

And finally, the 3's were considered the least important, in terms of obtaining a completed survey, due to their relatively small population sizes. Although follow-up calls were made to some of these local governments, it was not a high priority. It is important to note, however, that several counties and many towns ranked as a 3 did complete the survey by the original deadline.

A similar process was used to target the largest special districts with recreation missions.

See Table 7 at the end of this report for a list of the local government agencies who responded to the survey, broken out on a SCORP region basis.

The break-out of responses of counties, Municipalities and Special Districts is summarized as follows:

	Agencies Surveyed	Agencies Responding	Percentage
Counties	64	43	67%
Municipalities	269	156	58%
Special Districts	65	51	78%
Totals	398	250	63%

Survey Results

The final results obtained from all submitted surveys were tabulated on a statewide basis and on a regional basis. The regions used for the survey results are adapted from the Colorado Tourism Regions developed by the Colorado Tourism Board, a state agency. The survey regions consist of the Front Range, Northwest, Northeast, Southwest, South Central and Southeast.

The survey results are also included in the Statewide Comprehensive Outdoor Recreation Assessment (SCORA), the data compendium for the SCORP.

Part One – Agency Characteristics

Questions 1 through 36 focused on the local government's park and recreation planning tools, an inventory of lands and facilities, use of volunteers and youth conservation corps, and funding capabilities:

• Planning tools

- 63% of agencies have parks and recreation plans

- 53% of agency plans formally adopted by governing body
- 54% of plans with trails component
- 43% of plans include resource management

• Parks and Open Space Inventory

- 2592 developed parks – 99,299 acres
- 1,853 open space areas – passive recreation
 - 183,272 acres fee title
 - 92,789 acres easement
- 375,360 total acres

• Facilities Inventory

Playgrounds	1528
Baseball/softball fields	1467
Picnic shelters	1232
Campsites	1093
Soccer fields	1081
Tennis courts	882
Basketball courts	656
Multi-use courts/gyms	193
Swimming pools	176
Golf courses	75

• Trails Inventory

- 1,507 trail miles – paved multi-use
- 1,231 trail miles – gravel/natural surface multi-use
- 269 miles pedestrian/hiking only
- 3,007 total trail miles managed

• Outdoor Education, Volunteer and Youth Programs Inventory

- 16% offer Outdoor Education/Interpretation programs
- 522,100 people attend programs
- 16% with volunteers for visitor services
- 12% with volunteers for maintenance/construction

- 296,300 total volunteer hours per year

- 12% use youth conservation corps

- 32,900 crew weeks per year

• **Park, trail, open space funding**

- 36% with dedicated funding sources other than Lottery Funds distributed through Conservation Trust Fund

- 5 year capital investment needs for parks, trails and open space (2003-08)
\$1.02 billion

- Capital sources currently programmed to meet 5 year capital investment need
\$579.5 million (57% of total capital investment needs)

IN TABLES 1 – 4 ON THE FOLLOWING PAGES, THE SURVEY RESULTS FOR PART ONE, AGENCY CHARACTERISTICS, ARE TABLUATED ON A STATEWIDE, SCORP REGION AND COUNTY BASIS. RESULTS FOR EACH SCORP REGION ARE ALSO INCLUDED IN CHAPTER 3 OF THE SCORP.

TABLE 1			
SCORP LOCAL GOVERNMENT SURVEY 2003			
PART 1 - AGENCY CHARACTERISTICS STATEWIDE			
Question 2-36	Total Surveys	Sample - Number of Respondants	Percent
2. Does your agency have a plan for outdoor recreation sites, facilities and services?	251	157	63%
3. If yes on #2, is your outdoor recreation plan subject to public review and comment?	251	157	63%
4. If yes on #2, is your outdoor recreation plan formally adopted by your government (e.g., city council, county commissioners, board of directors)?	251	133	53%
5. If yes on #2, does your outdoor recreation plan include a trails component?	251	135	54%
6. If yes on #2, does your outdoor recreation plan address natural resource management and protection (such as erosion control, noxious weed management, habitat protection, etc.)?	251	109	43%
		Totals	
7. Number of public parks with developed recreation sites managed by your agency		2,592	
8. Approximate total acreage of parks with developed recreation sites managed by your agency		99,299	
9. Number of open space areas with no more than passive recreation use such as trails managed by your agency.		1,853	
10. Acreage of open space areas with no more than passive recreation use owned in fee title by your agency.		183,272	
11. Acreage of open space with no more than passive recreation use protected through easements administered by your agency.		92,789	
12. Number of golf courses managed by your agency.		75	
13. Approximate total acreage of golf courses managed by your agency.		11,090	
14. Number of baseball/softball fields managed by your agency.		1,467	
15. Number of basketball courts managed by your agency.		656	

Question 2-36	Total Surveys	Sample - Number of Respondants	Percent
16. Number of multi-use courts or gyms managed by your agency.		193	
17. Number of picnic shelters managed by your agency.		1,232	
18. Number of playgrounds managed by your agency.		1,528	
19. Number of soccer fields managed by your agency		1,081	
20. Number of swimming pools managed by your agency.		176	
21. Number of tennis courts managed by your agency.		882	
22. Number of camping sites managed by your agency.		1,093	
23. Miles of multiple use paved trails managed by your agency		1,507	
24. Miles of multiple use gravel or soft surface trails managed by your agency		1,231	
25. Miles of pedestrian only (hiking) trails managed by your agency.		269	
26. Does your agency offer Interpretive or Outdoor Education programs?	251	40	16%
27. If yes on #26, about how many people attend Interpretive or Outdoor Education programs annually		522,133	
28. Does your agency use volunteers to provide visitor services?	251	41	16%
29. Does your agency use volunteers for maintenance or construction work?	251	29	12%
30. If yes on #28 or #29, please estimate total number of volunteer hours annually?		296,277	
31. Does your agency utilize youth conservation corps crews for maintenance or construction work?	251	29	
32. If yes on #31, please estimate total number of crew weeks annually		32,930	
33. Other than state lottery funds, does your agency have a funding source (such as bonds or special purpose taxes) dedicated specifically for park, open space and trail investments?	251	90	36%
		Totals	

Question 2-36	Total Surveys	Sample - Number of Respondants	Percent
34. Please estimate the total dollar value of capital improvements (such as land, facilities, trails) planned by your agency for the five year period of 2003-08.		\$1,017,023,071	
35. Of the total five year capital improvement need you identified in Question #34 above, please estimate what dollar amount of that need can be funded by existing resources already programmed by your agency.		\$579,540,485	
36. Of the total five year capital improvement need you identified in Question #34 above, please estimate what dollar amount of that need will require funding not currently programmed by your agency for these investments.		\$308,461,142	

TABLE 2							
SCORP LOCAL GOVERNMENT SURVEY 2003							
PART 1 - AGENCY CHARACTERISTICS BY SCORP REGION							
Question	Front Range	North east	North west	South central	South east	South west	Totals
2. Does your agency have a plan for outdoor recreation sites, facilities and services?	68	10	35	20	9	15	157
3. If yes on #2, is your outdoor recreation plan subject to public review and comment?	69	10	33	20	9	16	157
4. If yes on #2, is your outdoor recreation plan formally adopted by your government (e.g., city council, county commissioners, board of directors)?	63	9	29	13	5	14	133
5. If yes on #2, does your outdoor recreation plan include a trails component?	65	5	29	15	6	15	135
6. If yes on #2, does your outdoor recreation plan address natural resource management and protection (such as erosion control, noxious weed management, habitat protection, etc.)?	51	7	23	9	6	13	109
7. Number of public parks with developed recreation sites managed by your agency	1,785	60	248	242	132	125	2,592

TABLE 2 (con't)

Question	Front Range	North east	North west	South central	South east	South west	Totals
8. Approximate total acreage of parks with developed recreation sites managed by your agency	71,149	773	3,099	14,141	8,166	1,971	99,299
9. Number of open space areas with no more than passive recreation use such as trails managed by your agency.	881	307	400	147	49	69	1,853
10. Acreage of open space areas with no more than passive recreation use owned in fee title by your agency.	150,536	217	12,290	15,008	2,621	2,600	183,272
11. Acreage of open space with no more than passive recreation use protected through easements administered by your agency.	69,031	15	20,928	2,080	263	472	92,789
12. Number of golf courses managed by your agency.	50	5	10	4	3	3	75
13. Approximate total acreage of golf courses managed by your agency.	7,915	440	1,292	544	410	489	11,090
14. Number of baseball/ softball fields managed by your agency.	1,057	53	91	166	31	69	1,467
15. Number of basketball courts managed by your agency.	364	24	69	115	50	34	656

TABLE 2 (con't)							
Question	Front Range	North east	North west	South central	South east	South west	Totals
16. Number of multi-use courts or gyms managed by your agency.	136	4	25	7	11	10	193
17. Number of picnic shelters managed by your agency.	713	75	111	219	37	77	1,232
18. Number of playgrounds managed by your agency.	1,018	38	149	189	75	59	1,528
19. Number of soccer fields managed by your agency	842	6	71	91	28	43	1,081
20. Number of swimming pools managed by your agency.	113	12	21	11	12	7	176
21. Number of tennis courts managed by your agency.	574	25	100	90	40	53	882
22. Number of camping sites managed by your agency.	940	45	42	9	13	44	1,093
23. Miles of multiple use paved trails managed by your agency	1,137	8	192	113	32	25	1,507
24. Miles of multiple use gravel or soft surface trails managed by your agency	602	13	193	204	111	108	1,231
25. Miles of pedestrian only (hiking) trails managed by your agency.	88	12	106	34	6	23	269

TABLE 2 (con't)

Question	Front Range	North east	North west	South central	South east	South west	Totals
26. Does your agency offer Interpretive or Outdoor Education programs?	24	2	6	6	0	2	40
27. If yes on #26, about how many people attend Interpretive or Outdoor Education programs annually	98,276	100	10,045	413,060	0	652	522,133
28. Does your agency use volunteers to provide visitor services?	23	3	6	3	2	4	41
29. Does your agency use volunteers for maintenance or construction work?	0	0	0	0	0	0	0
30. If yes on #28 or #29, please estimate total number of volunteer hours annually?	113,824	3,049	33,070	138,850	2,076	5,408	296,277
31. Does your agency utilize youth conservation corps crews for maintenance or construction work?	17	1	4	1	2	4	29
32. If yes on #31, please estimate total number of crew weeks annually	32,169	2	743	1	6	9	32,930

TABLE 2 (con't)							
Question	Front Range	North east	North west	South central	South east	South west	Totals
33. Other than state lottery funds, does your agency have a funding source (such as bonds or special purpose taxes) dedicated specifically for park, open space and trail investments?	49	4	20	5	3	9	90
34. Please estimate the total dollar value of capital improvements (such as land, facilities, trails) planned by your agency for the five year period of 2003-08.	\$621,599,077	\$9,760,000	\$261,735,540	\$76,740,000	\$13,031,000	\$34,157,454	\$1,017,023,071
35. Of the total five year capital improvement need you identified in Question #34 above, please estimate what dollar amount of that need can be funded by existing resources already programmed by your agency.	\$408,576,207	\$1,888,010	\$98,815,272	\$52,031,080	\$3,339,000	\$14,890,916	\$579,540,485
36. Of the total five year capital improvement need you identified in Question #34 above, please estimate what dollar amount of that need will require funding not currently programmed by your agency for these investments.	\$198,325,985	\$8,186,090	\$49,151,218	\$24,169,000	\$9,792,000	\$18,836,849	\$308,461,142

TABLE 3							
SCORP LOCAL GOVERNMENT SURVEY 2003							
LAND AND FACILITIES BY SCORP REGION							
Question	Front Range	North east	North west	South central	South east	South west	Totals
Public Parks	1,785	60	248	242	132	125	2,592
Acreage Public Parks	71,149	773	3,099	14,141	8,166	1,971	99,299
Open Space Areas	881	307	400	147	49	69	1,853
Acreage Open Space (fee title)	150,536	217	12,290	15,008	2,621	2,600	183,272
Acreage Open Space (easements)	69,031	15	20,928	2,080	263	472	92,789
Golf courses managed by your agency	50	5	10	4	3	3	75
Acreage Golf Courses	7,915	440	1,292	544	410	489	11,090
Baseball/softball fields	1,057	53	91	166	31	69	1,467
Basketball Courts	364	24	69	115	50	34	656
Multi-use Courts or Gyms	136	4	25	7	11	10	193
Picnic Shelters	713	75	111	219	37	77	1,232
Playgrounds	1,018	38	149	189	75	59	1,528
Soccer Fields	842	6	71	91	28	43	1,081
Swimming Pools	113	12	21	11	12	7	176
Tennis Courts	574	25	100	90	40	53	882
Campsites	940	45	42	9	13	44	1,093
Miles of multiple use paved trails	1,137	8	192	113	32	25	1,507
Miles of multiple use gravel or soft surface trails	602	13	193	204	111	108	1,231
Miles of pedestrian only (hiking) trails	88	12	106	34	6	23	269

TABLE 4

SCORP LOCAL GOVERNMENT SURVEY 2003

LOCAL GOVERNMENT LAND AND FACILITIES BY COUNTY

County Name	Population 2002	County Acreage	Number of Golf Courses	Acreage Golf Courses	Baseball/ softball fields	Basket ball Courts	Multi-use Courts or Gyms	Picnic Shelters	Play grounds	Soccer Fields	Swim Pools	Tennis Courts	Camp sites	Miles of multiple use paved trails	Miles of multiple use gravel or soft surface trails	Miles of pedestrian only (hiking) trails
Adams	366,177	756,667	6	1,171	106	45	10	136	143	90	18	47	50	124	38	28
Alamosa	15,029	462,854	0		0	1	0	1	1	0	0	0	0	0	4	0
Arapahoe	490,743	514,820	13	1942	180	73	8	127	155	165	20	154	0	175	90	1
Archuleta	10,028	866,899	-	-	-	-	-	1	-	-	-	-	-	-	-	-
Baca	4,516	1,637,426	-	-	-	-	1	1	1	-	-	-	-	-	-	-
Bent	5,971	986,287	-	-	-	-	-	9	3	-	1	-	-	-	-	-
Boulder	292,598	473,907	6	815	58	39	19	97	88	27	14	65	63	80	99	1
Broomfield	41,171	21,482	-	-	20	6	1	12	45	34	2	10	-	-	-	-
Chaffee	16,298	649,035	-	-	6	5	-	8	9	1	1	2	-	4	4	-
Cheyenne	2,230	1,140,413	2	116	-	-	-	4	-	-	2	-	1	-	3	-
Clear Creek	9,355	253,777	-	-	4	3	3	2	4	-	3	3	-	16	10	5
Conejos	8,400	825,741	-	-	2	1	1	2	1	-	-	-	-	-	-	-
Costilla	3,675	786,801	-	-	-	1	-	1	1	-	-	1	-	-	-	-
Crowley	5,504	512,170	-	-	-	1	-	1	1	-	-	-	2	-	-	-
Custer	3,540	473,112	-	-	2	1	-	1	1	-	-	-	-	-	-	-
Delta	28,009	735,644	2	344	19	9	1	27	7	3	2	16	-	1	8	1
Denver	555,631	99,620	5	945	310		26		135	90			-	296		
Dolores	1,844	689,232														
Douglas	180,690	539,072	1	200	83	26	14	43	51	84	5	15	-	109	41	18
Eagle	42,027	1,088,485	3	230	18	22	10	15	34	17	5	18	-	42	12	7
El Paso	20,186	1,362,305	3	504	122	87	-	154	141	77	7	68	-	85	170	22
Elbert	520,248	1,183,409	-	-	7	2	-	4	5	2	-	1	39	-	1	1
Fremont	46,358	981,175	-	-	10	6	1	24	10	6	2	10	3	-	16	3
Garfield	44,219	1,893,267	-	-	16	9	2	12	18	12	2	12	28	9	3	7
Gilpin	4,775	96,094	-	-	-	-	-	-	-	-	-	-	-	2	-	-
Grand	12,535	1,195,857	1	120	6	3	1	15	10	6	-	10	-	7	28	10
Gunnison	13,967	2,085,900	-	-	8	7	1	5	7	5	-	6	12	-	10	2
Hinsdale	791	718,946	-	-	-	-	-	1	-	-	-	-	32	-	3	3
Huerfano	7,861	1,019,116	-	-	3	2	5	5	4	-	1	2	-	-	2	-
Jackson	1,586	1,036,639	-	-	-	-	-	-	-	-	1.0	-	-	-	-	-

TABLE 4 (CON'T)

County Name	Population 2002	County Acreage	Number of Golf Courses	Acreage Golf Courses	Baseball/ softball fields	Basket ball Courts	Multi-use Courts or Gyms	Picnic Shelters	Play grounds	Soccer Fields	Swim Pools	Tennis Courts	Camp sites	Miles of multiple use paved trails	Miles of multiple use gravel or soft surface trails	Miles of pedestrian only (hiking) trails
Jefferson	527,876	494,624	8	1,905	153	97	20	130	213	204	31	174	32	255	216	20
Kiowa	1,617	1,142,976	-	-	-	1	1	1	2	-	1	1	-	-	-	-
Kit Carson	8,010	1,383,956	-	-	6	1	-	20	4	-	2	2	1	1	-	-
Lake	7,825	245,475	1	40	4	1	2	3	4	-	-	1	-	12	-	-
LaPlata	44,248	1,088,284	-	-	7	3	2	8	18	5	1	12	-	5	52	5
Larimer	253,137	1,684,320	8	537	63	35	27	80	67	70	9	68	545	51	56	13
Las Animas	15,276	3,054,893	-	-	5	3	1	1	5	1	1	-	-	6	100	-
Lincoln	6,093	1,654,532	1	26	3	3	-	5	3	-	1	-	-	-	2	2
Logan	20,787	1,180,999	1	98	7	3	-	7	9	-	1	9	1	2	2	2
Mesa	116,998	2,141,239	2	267	11	16	1	31	33	10	4	13	-	20	22	18
Mineral	833	562,021	-	-	1	-	-	-	1	1	-	-	-	-	-	-
Moffat	13,185	3,043,751	-	-	7	4	-	5	9	5	4	2	10	-	6	-
Montezuma	23,864	1,302,912	1	145	12	7	2	14	9	10	1	8	-	2	11	8
Montrose	33,666	1,437,712	-	-	18	5	2	11	10	17	2	9	-	15	4	2
Morgan	27,261	828,048	1	200	12	10	3	19	10	4	2	9	1	3	5	5
Otero	20,244	811,305	1	80	5	3	1	4	8	-	2	2	1	2	1	-
Ouray	3,771	347,075	-	-	1	1	1	5	1	1	1	1	-	-	2	2
Park	14,679	1,413,990	-	-	-	-	-	-	-	-	-	-	-	6	-	-
Phillips	4,486	440,517	-	-	3	2	1	7	3	-	2	2	1	-	-	1
Pitkin	14,943	621,036	1	120	5	3	4	1	25	4	1	8	-	38	30	3
Prowers	14,434	1,053,037	-	-	8	2	1	5	5	3	1	1	10	-	2	-
Pueblo	142,054	1,533,931	3	525	22	44	3	13	50	24	5	43	40	25	7	16
Rio Blanca	5,986	2,064,791	1	93	6	3	3	12	5	1	2	2	4	-	3	1
Rio Grande	12,434	584,382	-	-	5	5	1	17	7	-	1	1	6	1	2	1
Routt	19,862	1,511,750	1	232	10	2	-	7	5	11	-	16	-	6	24	30
Saguache	5,954	2,027,724	-	-	2	1	-	2	4	1	-	1	-	-	-	-
San Juan	558	248,954	-	-	1	-	1	1	1	1	-	1	-	-	-	-
San Miguel	6,666	826,085	-	-	3	2	-	4	6	1	-	-	-	2	18	-
Sedgwick	2,742	351,253	-	-	-	-	-	-	-	-	-	-	-	-	-	-
Summit	23,705	396,106	1	230	12	7	4	13	10	5	2	19	-	70	65	30
Teller	20,809	357,489	-	-	12	6	2	6	9	5	-	6	-	5	8	8
Washington	4,920	1,614,655	-	-	-	-	-	5	1	-	1	1	-	1	-	-

TABLE 4 (CON'T)																
County Name	Population 2002	County Acreage	Number of Golf Courses	Acreage Golf Courses	Baseball/ softball fields	Basket ball Courts	Multi-use Courts or Gyms	Picnic Shelters	Play grounds	Soccer Fields	Swim Pools	Tennis Courts	Camp sites	Miles of multiple use paved trails	Miles of multiple use gravel or soft surface trails	Miles of pedestrian only (hiking) trails
Weld	183,625	2,568,855	3	400	60	34	7	74	72	44	9	28	250	29	50	2
Yuma	9,853	1,516,549	-	-	15	3	-	4	3	-	1	1	1	1	-	1
Total	4,368,363	66,621,378	76	11,285	1,459	656	194	1,223	1,487	1,047	174	881	1,133	1,508	1,230	279
Sources:																
Colorado State Parks SCORP Survey, 2003																
Population Forecasts - DOLA 2003																
County Acreage - DOLA 2003																
State Land Status: Colorado Division of Local Government, Cartography/GIS section, 1996																
Land Ownership data prepared for Colorado Gap Analysis Project, from BLM 1:100,000 map series, by National Ecology Research Center, U.S. Fish and Wildlife Service.																
*Note: Includes State and Federal public lands only, some local government protected lands are in easements and may not be open to the public. Some State Lands are leased, but were included for the purpose of this study.																

Part Two – Prioritized Outdoor Recreation Issues

Part Two of the survey (Questions 37-74), enabled agencies to identify the highest priority issues facing them in meeting their outdoor recreation goals. A total of 38 issues categorized among Management, Visitor Service and Funding Issues, were listed and respondents were asked to rate them on a 1 (least important) to 5 (most important) basis.

The responses were tabulated and tallied in rank order, from most important to least important, on a statewide and regional basis.

Survey respondents were also given the opportunity to further describe their priority outdoor recreation issues by way of a qualitative, open-ended question (#74). These responses can be referenced at the end of this report.

These prioritized issues can assist recreation planners in assessing statewide and regional demands for recreation services. The results can also be used to help determine uses of the congressionally appropriated stateside LWCF allocations.

IN TABLE 5 ON THE FOLLOWING PAGES, THE SURVEY RESPONSES IDENTIFYING PRIORITY ISSUES ARE TABULATED ON A STATEWIDE AND SCORP REGION BASIS. RESULTS FOR EACH SCORP REGION ARE ALSO INCLUDED IN CHAPTER 3 OF THE SCORP, AND INCLUDE RANKING OF THE TOP 15 PRIORITY ISSUES FOR THAT REGION.

TABLE 5							
SCORP LOCAL GOVERNMENT SURVEY 2003							
PART 2 - PRIORITY ISSUES - RANKED SCORES BY STATE AND SCORP REGION							
Questions 37-74	State Rank	Front Range	North east	North west	South central	South east	South west
67. Insufficient resources to fund your agency's budget	1	3	3	9	2	6	1
68. Year to year stability of your agency's budget	2	2	1	7	3	4	5
37. Need for visitor safety and protection	3	1	17	3	9	13	3
69. Liability protection for your agency	4	6	4	11	1	5	7
64. Access for people with disabilities	5	4	7	8	5	3	10
42. Monitor natural resource conditions (e.g., vegetation, weeds, water quality)	6	5	2	5	10	11	8
65. Offer recreation programs for youth	7	10	6	10	4	2	9
39. Capacity to serve growing population	8	8	13	1	8	19	4
54. Vandalism	9	9	5	18	7	1	11
66. Provide public information about facilities and programs	10	12	9	16	6	9	12
59. Completing community trail systems	11	7	27	6	11	27	2
72. Need to create a dedicated funding source for acquisitions and facilities	12	11	8	17	13	10	13
38. Coordination/cooperation with other outdoor recreation agencies	13	16	14	2	15	16	15
40. Creating or updating your agency's parks and recreation plan	14	13	18	19	12	14	6
62. Recreation programs and opportunities for seniors	15	19	10	22	14	7	17
55. Graffiti control	16	15	11	28	17	8	22
46. Assess visitor satisfaction and expectations	17	14	21	21	21	21	21
61. Connecting communities to public lands with trail systems	18	18	32	4	24	32	16
41. Creating or updating your agency's trails plan	19	20	28	15	20	23	14

TABLE 5 (con't)							
	State Rank	Front Range	North east	North west	South central	South east	South west
43. Protection of unique species and ecosystems	20	21	23	13	23	26	23
56. Educate public on user ethics	21	22	22	25	16	15	18
60. Connecting to adjacent communities with trail systems	22	17	34	14	26	33	25
71. Strategies for public/private cost-sharing for recreation	23	30	12	23	19	17	26
73. Funding for partnerships with volunteer and/or youth organizations	24	28	15	27	22	12	29
45. Staff training for recreation services	25	23	19	24	32	25	31
51. Engaging volunteer assistance for programs or maintenance/construction	26	26	20	33	18	20	19
70. User fees for recreation facility use	27	27	16	31	28	18	30
58. Adequate water for lake or river recreation	28	33	31	12	27	22	20
47. Management of crowding/overuse of parks	29	25	30	26	31	29	28
52. Capacity to manage volunteers	30	29	24	34	25	28	24
44. Staff training for natural resource management	31	24	25	32	30	30	34
63. Offer interpretive and outdoor education programs	32	31	29	35	29	24	33
48. Management of crowding/overuse of trails	33	32	35	29	36	35	37
53. Utilize youth corps for park/trail maintenance or construction work	34	34	26	37	33	34	32
49. Management of conflicts among trail users	35	35	36	30	37	36	35
57. Recreational access to rivers	36	37	37	20	34	37	27
50. Management of off-highway vehicles	37	36	33	36	35	31	36
74. Please list here other issues	38	38	38	38	38	38	38

TABLE 5 (con't)
Ranking Methodology:
Survey questions scored (ranging from 5 for very important to 1 for not important) by applicants.
Scores totaled for each question. Totals then ranked at State and Tourism Region level.

Part Three – Prioritized Capital Investment Needs

Part Three of the survey (Questions 75-124), enabled agencies to identify the highest priority capital investment needs facing them in meeting their outdoor recreation goals. A total of 49 capital needs were listed and respondents were asked to rate them on a 1 (least important) to 5 (most important) basis.

The responses were tabulated and tallied in rank order, from most important to least important, on a statewide and regional basis.

Survey respondents were also given the opportunity to further describe their priority outdoor recreation capital investment needs by way of a qualitative, open-ended question (#124). These responses can be referenced at the end of this report.

These prioritized needs can assist recreation planners in assessing statewide and regional priorities for capital investments. The results can also be used to help determine uses of the congressionally appropriated stateside LWCF allocations.

IN TABLE 6 ON THE FOLLOWING PAGES, THE SURVEY RESPONSES IDENTIFYING PRIORITY ISSUES ARE TABULATED ON A STATEWIDE AND SCORP REGION BASIS. RESULTS FOR EACH SCORP REGION ARE ALSO INCLUDED IN CHAPTER 3 OF THE SCORP, AND INCLUDE RANKING OF THE TOP 15 PRIORITY NEEDS FOR THAT REGION.

TABLE 6							
SCORP LOCAL GOVERNMENT SURVEY 2003							
PART 3 - PRIORITY NEEDS - RANKED SCORES BY STATE AND SCORP REGION							
Questions 75-123	State	Front Range	North east	North west	South central	South east	South west
91. Community trail system	1	1	9	1	12	6	1
100. Picnicking	2	2	1	6	2	2	3
82. Playgrounds	3	3	2	7	3	3	6
77. Acquisition of trail corridors and rights of way	4	6	18	3	1	17	2
90. Trails connecting to public lands	5	7	23	2	13	16	4
89. Trails connecting to adjacent communities	6	10	27	4	15	20	5
75. Acquisition of natural open space	7	4	12	5	7	19	12
79. Baseball and football fields	8	8	3	8	8	8	14
76. Acquisition of parklands	9	5	15	13	4	14	8
80. Soccer fields	10	9	8	9	10	11	11
78. Acquire water for recreation	11	11	13	12	5	1	7
87. Skateboard parks	12	14	6	17	9	4	10
81. Tennis/basketball/volleyball courts	13	15	5	11	19	13	13
109. Nature study/wildlife watching sites	14	13	21	10	11	10	17
107. Dog off leash areas/Dog parks	15	12	20	26	22	23	19
85. Swimming pools	16	17	4	16	20	5	18
104. Toilets and showers	17	19	10	22	6	15	15
108. Interpretive displays	18	18	32	23	16	21	21
103. Visitor center and program facilities	19	20	19	21	14	7	26
83. Outdoor in-line skate hockey rinks	20	16	7	25	17	12	32
111. Shoreline lake fishing	21	21	24	30	23	22	16
112. River fishing	22	28	33	14	21	36	9
88. Bicycle Motocross (BMX) areas/tracks	23	23	25	29	18	18	20
121. Outdoor ice skating	24	27	26	15	25	42	22
115. Canoeing and kayaking	25	26	37	18	24	35	27
122. Tubing and sledding	26	24	28	27	31	33	23
116. River rafting	27	29	42	28	32	37	24
84. Golf courses	28	22	16	32	37	9	39
86. Outdoor water parks	29	25	22	36	34	26	34
119. Backcountry skiing	30	38	39	20	35	38	28
120. Cross country skiing center	31	40	40	19	39	43	25

TABLE 6 (con't)							
Questions 75-123	State	Front Range	North east	North west	South central	South east	South west
110. Boat fishing	32	30	30	33	27	27	29
118. Downhill skiing	33	43	41	24	42	40	33
101. Tent camping	34	31	17	41	30	29	31
123. Snowmobile routes	35	42	43	31	36	41	30
106. Archery/shooting ranges	36	33	14	34	33	25	38
102. Car/RV camping	37	34	11	40	29	24	36
114. Sailing and windsurfing	38	32	34	37	40	34	40
98. Off-highway/all terrain vehicle areas	39	36	29	35	26	30	35
99. Off-highway motorcycle areas	40	37	31	39	28	28	37
105. Cabins and yurts for visitors	41	35	38	42	41	39	41
113. Pleasure motor boating	42	39	35	38	38	31	42
117. Waterskiing/jet skiing	43	41	36	43	43	32	43
Raw Scoring Methodology:							
Survey questions scored (ranging from 5 for very important to 1 for not important) by applicants.							
Scores totaled for each question. Totals listed for the State and Tourism Regions.							

RESPONSES TO QUESTIONS ASKING FOR ADDITIONAL COMMENTS ON PRIORITY ISSUES AND NEEDS:

In order to give agencies an opportunity to further describe their Priority Issues and Needs, the survey included the opportunity to give descriptive answers for Part 2 (Priority Outdoor Recreation Issues) and Part 3 (Priority Capital Investment Needs) of the survey. Those responses are described below.

Question #74: Priority Outdoor Recreation Issues qualitative answers grouped by category

Drought & Water:

14) Prospect Park & Rec. District (FR) - Funding for drought recovery of parks and fields

49) Aurora Parks & Open Sp. Dept. (FR) - Control, Convert irrigation source to reclaimed wastewater. Small Mammal Relocation Policing/Law Enforcement

84) State Parks (FR) - Irrigation water availability. Weed control.

85) Foothills Park & Rec. (FR) - Expansion of agency boundaries. Drought management.

106) Estes Valley Park & Recreation (FR) - 1. Historic trail use over private land. 2. Insufficient funding for trails. 3. Adequate Water Supply

120) City of Brighton (FR) - Historic Preservation. Special Events and space for the events. Drought water (well water vs. surface water requirements). Skate parks. Funding for neighborhood, community, and regional parks

156) South Suburban Parks & Recreation (FR) - 1) Drought 2) Funds to replace/repair facilities 3) Legislative Mandates 4) Funding for artificial turf fields

228) Town of Cokedale (SE) - Water Availability

276) City of Pueblo (SE) - ParkRen. Water

183) Town of Fraser (NW) - Open Space Preservation, Wetland Preservation, Water Quality.

192) Town of Vail (NW) - US Forest service / Town fire/insect interface, Water quality, road chemicals/aggregate, Whitewater facility development

202) Town of Breckenridge (NW) - Fire mitigation measures

133) City of Sterling (NE) - Support of City Council for Parks and Recreation Support of City Administration for Parks and Recreation. Sufficient water to maintain and operate facilities.

Funding/Resources:

38) Jamestown (FR) - Adequate funding needed to acquire open space.

106) Estes Valley Park & Recreation (FR) - 1. Historic trail use over private land. 2. Insufficient funding for trails. 3. Adequate Water Supply

120) City of Brighton (FR) - Historic Preservation. Special Events and space for the events. Drought water (well water vs. surface water requirements). Skate parks. Funding for neighborhood, community, and regional parks.

156) South Suburban Parks & Recreation (FR) - 1) Drought 2) Funds to replace/repair facilities 3) Legislative Mandates 4) Funding for artificial turf fields

162) City of Wheat Ridge (FR) - Resources for adequate staffing of open space Maintenance of existing infrastructure as a priority over new construction

171) City of Evans Parks & Rec. (F) - Funding the Colorado Front Range Trail

219) Columbine Knolls Recreation District (F) - Funding for maintenance of existing resources.

222) Town of Berthoud (F) - We don't have enough man power to hardly make any improvements much less maintain anything.

230) Town of Windsor (F) - Staffing levels of service, Maintenance levels of service, Operation Standards

271) City of Longmont (F) - Preservation of wildlife habitat, Community buffers, Reduced Sales Tax Revenues

185) City of Canon City (S) - Funding for long range planning -Periodic plan updates -Developer dedication of land for parks

210) City of Colorado Spgs. Parks, Recreation & Cultural Svcs.(S) - Maintenance funding has not kept up with capital funding Revenue collected for use counts against TABOR limits User fees should be exempt from TABOR Funding generally has not kept up with growth.

257) Town of Monument (S) - Inability to plan long range because of annual budget constraints.

76) Montezuma County (SW) - Capital improvements for fairgrounds. Expand mountain bike/hike/equestrian trail opportunities. Expand off-road vehicle opportunities.

201) Town of Olathe (SW) - Simplified grant applications. Impact fees dedicated to parks.

221) City of Las Animas (SE) - Difficult to keep up with current safety codes on limited revenue

154) Mesa County (NW) - Future of GOCO as a funding source.

217) Summit County (NW) - Funding for significant bikepath improvements. Funding for ballfield maintenance, Long-term asphalt management plan for bikepaths.

34) E. Cheyenne Rec. District (NE) - MONEY/ Limited Resources due to our location

36) Kit Carson County (NE) - Preservation of historic site at park best practices for park managers. Cost effective grounds management.

133) City of Sterling (NE) - Support of City Council for Parks and Recreation Support of City Administration for Parks and Recreation. Sufficient water to maintain and operate facilities.

Planning:

80) Town of LaSalle (FR) - The need for more Town owned ballfields. The need for Town owned indoor facilities. The need for a better parks plan.

148) Louisville Dept. of Land Mgmt. (FR) - Working effectively with citizen advisory boards

196) City of Federal Heights (F) - We have a small playground, a single shelter, and a few benches in a 15 acre land locked area. We do not have a parks and recreation department or plans for the next five years. This park is one of many, all inclusive maintenance duties of the Public Works Department.

77) City of Cripple Creek (S) - We are very active in being an active partner in community collaboration. We are involved in a community 3 year strategic plan. Another area is historic preservation.

185) City of Canon City (S) - Funding for long range planning -Periodic plan updates -Developer dedication of land for parks

257) Town of Monument (S) - Inability to plan long range because of annual budget constraints.

195) Montrose Recreation District (SW) - Help develop a capital improvement program with other local agencies

160) San Miguel County (SW) - 1. Balancing the need for facilities against high land and construction costs. 2. Maintaining public access in a growing community of people concerned with privacy and security issues. 3. Participation by developers in providing the community recreational opportunities.

10) Parachute/Battlement Mesa Park & Rec. District (NW) - Volunteer/Coach education. Public education for public facilities. Survey of what public wants and recreation needs.

72) Town of Meeker (NW) - The need to formalize a plan for just parks. We have adopted a plan for recently purchased large acreage and have some in Town's comp. plan, but not a dedicated document just for parks

217) Summit County (NW) - Funding for significant bikepath improvements. Funding for ballfield maintenance. Long-term asphalt management plan for bikepaths.

265) E.R.B.M. Park & Rec. District (NW) - Capital Improvement Program is in the planning stages, we are in the midst of locating an Executive Director, thus we do not have numbers for Questions 34-36.

Open Space, Growth Issues, Preservation/Historic Preservation:

50) Arapahoe Park & Rec. District (FR) - Available open space dedications. Tremendous local population growth Recreation Center facilities and programming.

98) Jefferson County Open Space (FR) - Preservation in advance of growth. Addressing changes of use and demographics.

120) City of Brighton (FR) - Historic Preservation. Special Events and space for the events. Drought water (well water vs. surface water requirements). Skate parks. Funding for neighborhood, community, and regional parks.

271) City of Longmont (F) - Preservation of wildlife habitat, Community buffers, Reduced Sales Tax Revenues

77) City of Cripple Creek (S) - We are very active in being an active partner in community collaboration. We are involved in a community 3 year strategic plan. Another area is historic preservation.

160) San Miguel County (SW) - 1. Balancing the need for facilities against high land and construction costs. 2. Maintaining public access in a growing community of people concerned with privacy and security issues. 3. Participation by developers in providing the community recreational opportunities.

7) Crowley County (SE) - Our program is in its infancy. We need assistance with grant funding, planning, parks management and Sheriff's Dept. patrol.

183) Town of Fraser (NW) - Open Space Preservation, Wetland Preservation, Water Quality

36) Kit Carson County (NE) - Preservation of historic site at park best practices for park managers. Cost effective grounds management.

New Park & Rec. Opportunities:

67) Castle Pines North Metro District (FR) - Building an additional park

80) Town of LaSalle (FR) - The need for more Town owned ballfields. The need for Town owned indoor facilities. The need for a better parks plan.

120) City of Brighton (FR) - Historic Preservation. Special Events and space for the events. Drought water (well water vs. surface water requirements). Skate parks. Funding for neighborhood, community, and regional parks.

41) Town of Blanca (S.) - We would like to acquire another park area for community events and picnics.

184) Park County (S)- new public recreation opportunities on private ranch properties

76) Montezuma County (SW) - Capital improvements for fairgrounds. Expand mountain bike/hike/equestrian trail opportunities. Expand off-road vehicle opportunities.

160) San Miguel County (SW) - 1. Balancing the need for facilities against high land and construction costs. 2. Maintaining public access in a growing community of people concerned with privacy and security issues. 3. Participation by developers in providing the community recreational opportunities.

174) City of Durango (SW) - Acquisition and development of a Regional Park with athletic sports fields.

92) Prowers County (SE) - We are exploring building an Events Center at the Fair grounds which is the only recreational area we manage. This Center would serve multiple recreational activities. We are anticipating a cost of \$5 million.

69) Town of Basalt (NW) - We need a youth or recreation center

153) City of Fruita (NW) - City Council has appointed a 13-member committee to research possibility for establishing a Community Center. Members are both residents and non-residents. Report is due 07/03.

192) Town of Vail (NW) - US Forest service / Town fire/insect interface Water quality road chemicals/aggregate, Whitewater facility development.

87) Town of Fleming (NE) - Programs: Interesting & affordable programs for all ages.

239) Limon Rec. Dept. (NE) - Land for a recreation facility.

Grant Applications/Process:

54) Town of Coal Creek (S) - Simplify grant process

201) Town of Olathe (SW) - Simplified grant applications. Impact fees dedicated to parks

Maintenance, Other:

168) Town of Black Hawk (FR) - Because of our existence of abandoned mine shafts, we need to work on finding all mines and placing caps.

172) Wauconda Park/Perry Park Metro District (F) - Fire mitigation on undeveloped properties, weed removal from creeks and streams. Colorado School of Mines students have been a major partner in our programs.

13) Alamosa County (S.)- State, Federal and Local agency communications

190) Lake County (S) - Creation of recreation program director position

Question #124 Answers: Priority Capital Investment Needs grouped by Region

Front Range:

- 2) City of Commerce City (F) - Rail Park 3
- 4) City of Glendale (F) - We don't have any of these
- 14) Prospect Recreation & Park District (F) - Community events for all ages Horse arenas
- 37) Larimer County Parks and Open Lands (F) - Marina boating services-Concession-4
- 38) Jamestown (F) - Property to protect our source drinking water from off-road vehicle users. 2. To add top soil in Elysian Park/improve trail, drainage and vegetation; replace play structures. 3. Install low-flow sprinkler system in town square.
- 49) Aurora Parks & Open Space Dept. (F) - 5 Synthetic turf fields 5 Spraygrounds 5 Tree planting 4 Sand volleyball courts 4 Renovation of older parks 4 Preservation of older structures and farmsteads
- 50) Arapahoe Park & Recreation District (F) - Indoor ice rink
- 93) Arapahoe Co. Rec. District (F) - Historical trail preservation and use in conservation easement.
- 105) Boulder Parks & Recreation Department (F) - Cross country ski trail 4 Community garden 4 Road bike racing 3 Group picnic shelter 3 Recreation Center 5 Softball fields 4
- 106) Estes Valley Recreation and Park District (F) - 1. Outdoor shooting range - 4
- 120) City of Brighton (F) - Greenbelts and open space areas between communities 5 Farmland Preservation 5 Conservation/Agricultural Easements 5 Trails on Easements 5 Historic Preservation 5 Drought issues (well water vs. surface water requirements) 5
- 148) Louisville Dept. of Land Mgmt (F) - "geo-caching"
- 165) Beebe Draw Farms Metropolitan District No. 1 (F) - Equestrian facilities marina and docks
- 168) City of Black Hawk (F) - We are most interested in the multi-use and interpretive trail needs.

169) City of Arvada Parks Dept. (F) - Disc Golf, Equestrian Centers (not trails)

South Central:

54) Town of Coal Creek (S) - Stop converting 4x4 vehicle trails into 2x4 trails.

190) Lake county (S) - improving and maintaining access to public lands

Southwest:

76) Montezuma County (SW) - Hunting areas for waterfowl and upland gamebirds. Stock car racing. Drag racing.

179) El Rancho Florida Metropolitan District (SW) - District's priorities are: Fishing in Ponds & River. Picnic Areas. Family Leisure Areas. Swimming in Ponds.

201) Town of Olathe (SW) - Horse shoe pits 3 bocce ball court 5 croquet courts 5

Southeast:

7) Crowley County (SE) - Our County is responsible for lake recreation only. However the Towns of Crowley County are responsible for all other forms of recreation. As such, the following: County, (5) Boating, fishing, camping, trails. Towns, (5) baseball parks, skateboard parks,

92) Prowers County (SE) - Rodeos and similar activities which can be offered year round are most important, but the ability to provide diverse range of activities is part of why we are exploring building an Events Center.

221) City of Las Animas (SE) - Xeriscape for all parks - 5

276) City of Pueblo (SE) - Historic sites - 3, Frisbee - 3

Northwest:

10) Parachute/Battlement Mesa Park & Rec. District (NW) - Access/transportation for youth to use facilities.

11) City of Aspen Parks & Rec. (NW) - Paragliding 5 Hanggliding 5

72) The Town of Meeker (NW) - Town of Meeker Parks and the Recreation District here conducts most of the programs. Therefore, the Town's focus is more on facilities.

86) Rifle Recreation (NW) - Bolted sport climbing routes. 4 Ice climbing route. 3

153) City of Fruita (NW) - The City of Fruita promotes the outdoor recreation activities that are offered on our neighboring State Park, National Park and BLM lands.

202) Town of Breckenridge (NW) - Snowshoeing

249) Vail Recreation District (NW) - Indoor Ice Arenas - 5

264) Pitkin County (NW) - Some of our trails used by Nordic Council

267) City of Stmbt. Spgs. (NW) - Alpine Slide - 5 Teen Programs - 5 Non-athletic youth programs - 5 Indoor ice arena - 5 Rodeo - 5 Ski jumping - 5 Special events - 5 (outdoor concerts, art festivals) Tennis - 5

Northeast:

None

TABLE 7: AGENCIES RESPONDING TO THE LOCAL GOVERNMENT SURVEY**Front Range SCORP Region**

Adams County Parks Department	Gunbarrel Estates Metropolitan Park and Recreation District
Arapahoe Co. Rec. District	Heather Gardens Metropolitan District
Arapahoe Park & Recreation District	Highlands Ranch Metro Districts
Aurora Parks & Open Space Department	Hyland Hills Park and Recreation District
Beebe Draw Farms Metropolitan District No. 1	Jamestown
Boulder County Parks & Open Space Department	Jefferson Co Open Space
Boulder Parks & Recreation Department	Ken-Caryl Ranch Megtro District
Carbon Valley Park and Recreation District	Lafayette P&R
Castle Pines North Metro District	Larimer County Parks and Open Lands
City & County of Broomfield Recreation Services	McArthur Ranch Metropolitan Recreation District
City of Arvada Parks Dept.	North Jeffco Park & Recreation District
City of Black Hawk	Pleasant View Metro. Dist.
City of Brighton	Prospect Recreation & Park District
City of Centennial	South Suburban Parks and Recreation
City of Cherry Hills Village	St. Mary's Metro District
City of Commerce City	Strasburg Parks and Recreation
City of Dacono	Thompson Rivers Parks and Recreation District
City of Edgewater	Town Of Berthoud
City of Englewood	Town of Castle Rock
City of Evans Parks and Recreation	Town of Columbine Valley
City of Federal Heights	Town of Eaton
City of Fort Collins	Town of Erie
City of Ft. Lupton	Town of Estes Park
City of Glendale	Town of Foxfield
City of Golden	Town of Georgetown
City of Greeley Recreation	Town of Gilcrest
City of Idaho Springs	Town of Grover
City of Lakewood	Town of Hudson
City of Littleton	Town of Kersey
City of Longmont	Town of Larkspur

Table 7 (cont.)

Front Range SCORP Region	Front Range SCORP Region
City of Loveland	Town of LaSalle
City of Northglenn	Town of Lochbuie
City of Thornton	Town of Lyons Department of Parks, Recreation & Cultural Events
City of Westminster Parks & Rec.	Town of Mead
City of Wheat Ridge	Town of Milliken
Clear Creek County	Town of Mountain View
Clear Creek Metropolitan Recreation District	Town of Nederland
Columbine Knolls Recreation District	Town of Nunn
Denver Parks and Recreation	Town of Parker
Department of Land Management	Town of Pierce
Douglas County	Town of Platteville Recreation
Estes Valley Recreation and Park District	Town of Wellington
Evergreen Pk & Rec Dist.	Town of Windsor
Foothills Park and Rec	Wauconda Park/Perry Park Metro District
Forest Hills Metropolitan District	Weld County Dept. of Planning Services
Greenwood Village Parks, Trails and Recreation	
Northeast SCORP Region	Northwest SCORP Region
Cheyenne County	Arrowhead Metropolitan District
City of Brush	Berry Creek Metropolitan District
City Of Burlington	Buffalo Mtn Metro District
City of Fort Morgan	Building & Planning Dept.
City of Holyoke	City of Aspen Parks & Recreation
City of Sterling	City of Craig
City of Yuma	City of Fruita
East Cheyenne Rec. Dist.	City of Glenwood Springs Parks & Rec. Dept.
Elbert County Government	City of Steamboat Springs
Elizabeth Park & Recreation District	Consolidated Metropolitan District
Kit Carson County	Copper Mountain Consolidated Metropolitan District
Limon Rec. Dept.	Cotton Ranch Metropolitan District
Lincoln County	E.R.B.M. Recreation & Park District
Town of Akron	Eagle County
Town of Flagler	Eagle-Vail Metropolitan District

Table 7 (cont.)	
Northeast SCORP Region	Northwest SCORP Region
Town of Fleming	Grand County
Town of Haxtun	Grand Junction Parks & Recreation Dept.
Town of Kiowa	Grand Lake Metropolitan Recreation District
Town of Kit Carson	Jackson County
Town of Merino	Mesa County
Town of Simla	Moffat County Parks & Recreation
Town of Wiggins	Parachute/Battlement Mesa Park and Recreation District
Washington County	Pitkin County
Yuma County	Pitkin County Open Space and Trails
	Rifle Recreation
	Rio Blanco County
	Summit County Government
	Town of Avon
	Town of Basalt
	Town of Breckenridge
	Town of Carbondale
	Town of De Beque
	Town of Dillon
	Town of Eagle
	Town Of Fraser
	Town of Frisco
	Town of Granby
	Town of Grand Lake
	Town of Gypsum
	Town of Kremmling
	Town of Meeker
	Town of Palisade
	Town of Silverthorne
	Town of Vail
	Town of Winter Park
	Vail Recreation District

Table 7 (cont.)	
Northeast SCORP Region	Northwest SCORP Region
	Western Eagle County Metro Recreation District
	Western Rio Blanco Metro. Rec. & Park Dist.
Southeast SCORP Region	South Central SCORP Region
Bent County	Alamosa County
City of Lamar	Canon City Area Recreation and Park District
City of Pueblo	Chaffee County
City of Rocky Ford	Cherokee Metropolitan District
City of Trinidad	City of Canon City
City of Walsenburg	City of Colorado Springs Parks, Recreation and Cultural Services
Crowley County	City of Creede
Huerfano County	City of Cripple Creek
John Russell	City of Florence
Kiowa County	City of Fountain
Otero County	City of Monte Vista
Prowers County	City of Salida
Pueblo West	City of Woodland Park
Santa Fe Trail Ranch Metro District	El Paso County Parks and Leisure Services
Town of Cokedale	Fremont County
Town of Crowley	Lake County
Town of Eads	Park County
Town of Fowler	Penrose Park & Recreation District
Town of Granada	Teller County Division of Parks
Town of La Veta	Town of Antonito
Town of Manzanola	Town of Blanca
Town of Pritchett	Town of Buena Vista
	Town of Center
	Town of Coal Creek
	Town of Crestone
	Town of Del Norte
	Town of Monument
Table 7 (cont.)	

Table 7 (cont.)	
Southeast SCORP Region	South Central SCORP Region
Archuleta County	Town of Palmer Lake
City of Cortez	Town of Poncha Springs
City of Delta	Town of Silver Cliff
City of Durango	Town of South Fork
City of Gunnison	
City of Montrose	
Durango West Metro #2	
El Rancho Florida Metropolitan District	
Gunnison County Metropolitan Recreation District	
Gunnison County Public Works	
Hinsdale County	
La Plata County Planning Dept	
LHV Park and Recreation District	
Montezuma County	
Montrose County Land Use Dept.	
Montrose Recreation District	
Mtn Village Metro District	
North Fork Pool, Park and Recreation District	
San Juan River Village Metro. Dist.	
San Miguel County	
Town of Cedaredge	
Town of Crested Butte	
Town of Dolores	
Town of Hotchkiss	
Town of Ignacio	
Town of Mancos	
Town of Naturita	

Table 7 (cont.)	
Southwest SCORP Region	South Central SCORP Region
Town of Norwood	
Town of Nucla	
Town of Olathe	
Town of Orchard City	
Town of Ouray	
Town of Silverton	

APPENDIX C - SCORP WETLANDS COMPONENT

Introduction

From high elevation stream systems to shorelines created by reservoirs, Colorado's wetland diversity is an essential component of the natural landscape. Wetlands and riparian areas in Colorado make up a small but important part of the environment.

In the past, wetlands were sometimes regarded as useless lands that had to be drained or filled in order to provide significant value. Wetlands are now recognized as a source of great benefit for their contribution to hunting, food production, habitat values, filtering of contaminants and excess nutrients, and flood control capabilities.

Vegetation across Colorado is varied with mixed forests, shrublands and grasslands, as depicted in Map 23: Colorado Vegetation. With semi-desert conditions in most of the state, areas with abundant water provide habitat for much of the state's wildlife and contribute significantly to maintaining Colorado's biodiversity. Colorado Natural Heritage Program (CNHP), one of the state's primary comprehensive biological diversity data centers, tracks approximately 170 rare species in the state that are dependent on wetlands or the associated aquatic system. Providing an education opportunity for millions

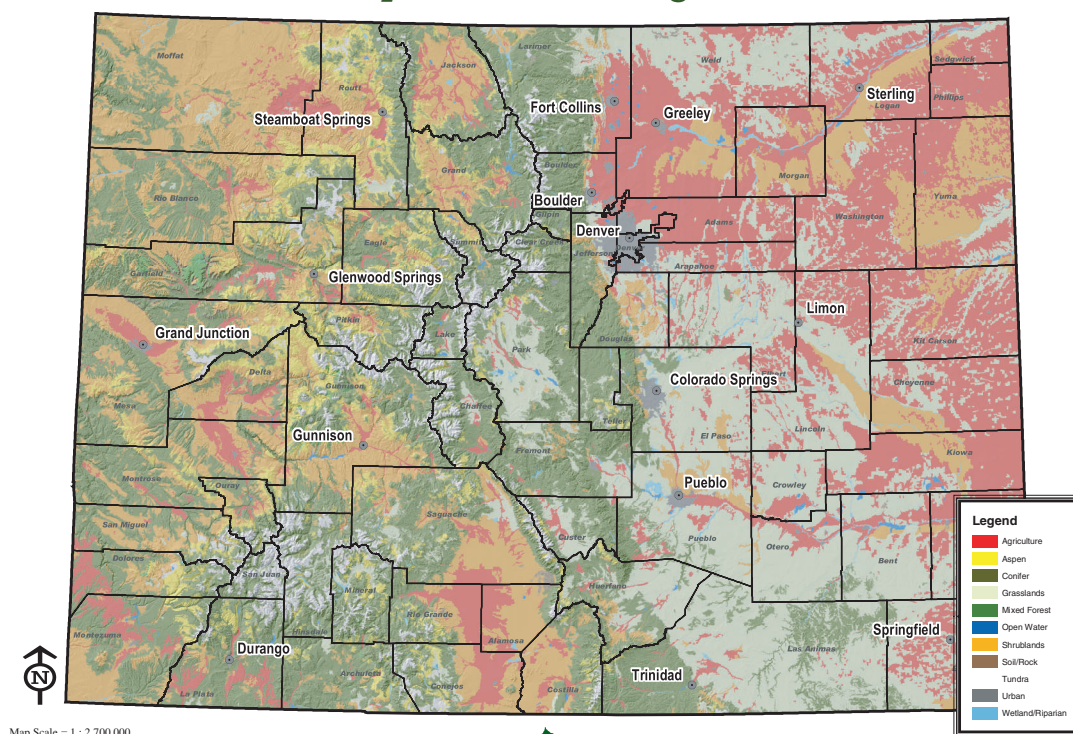
of people each year, wetlands are also a valuable outdoor classroom. Wetlands in Colorado contribute to landscape diversity, provide corridors for wildlife, and contribute countless benefits to our ecosystems.

Since the passage of the Emergency Wetlands Resources Act (EWRA, Public Law 99-645, S. 303), in 1986, the National Park Service has directed each state to include a wetlands component as part of their SCORP. Under this act, each state must consider wetlands as an important recreation resource by including three pieces of information into the SCORP with respect to wetlands:

- (1) State wetlands plan must be consistent with the National Wetlands Priority Conservation Plan
- (2) Must include consultation with the state's game and fish management agency
- (3) Must list the types of wetlands that are priorities for acquisition

The following sections document the types and classes of wetlands in Colorado, the status of programmatic efforts aimed at wetland protection, and provide an assessment of priorities for future funding.

Map 23: Colorado Vegetation



Overview of Wetland Resources

According to the Colorado Division of Wildlife (DOW), Colorado has an estimated 1 million acres of remaining wetlands, which is approximately 1.5% of the state. Some of these wetlands are displayed in Map 23, which depicts known riparian wetland areas and does not represent all wetlands in the state. The gaps in this map demonstrate the need for continuing to survey and identify wetland resources in the state, as part of a basic conservation effort. Currently, several major inventory efforts are underway to confirm the number and acreage of wetlands in Colorado, including:

- Colorado Division of Wildlife Riparian Mapping Project
- Colorado Natural Heritage Program Wetlands and Riparian Classification
- Colorado Natural Heritage Program Countywide and Wetland Inventories

Completion of these inventories is anticipated over the next several years and will be a valuable baseline to identify and conserve wetland resources in Colorado.

Definitions

The DOW has defined the term “wetlands” to mean the transitional lands between terrestrial (uplands) and aquatic (open water) systems where the water table is usually at or near the surface. Wetlands do not have to be wet year-round to be considered a wetland. Sometimes water lies just below the surface of the soil where the plant roots grow. In general, a wetland is wet long enough during the growing season to have developed specific characteristics that are unique to wetlands, such as the plants, soils, and water source. A wetland may have one or more of the following characteristics:

- It supports hydrophytes (wetland plants)
- It is saturated or covered by shallow water at some time during the growing season of most years
- Its soil possesses predominantly hydric characteristics

Wetland Types

Wetlands in Colorado are of four primary types as defined by the DOW: Peatlands, Marshlands, Wet Meadows, and Riparian Wetlands. Protection efforts aim to preserve significant and viable tracts of wetlands within each of these four classifications.

Peatland

Peatland is a generic term for any wetland that accumulates partially decayed plant matter. There are two types of peatlands, bogs and fens. Bogs are peat accumulating wetlands without significant inflows or outflows of water. They generally support acidophilic (acid loving) plants and mosses. A fen receives some drainage from surrounding mineral soil and usually supports marshlike vegetation. Fens are the only peatlands type known in Colorado.

Fens form at low points in the landscape or near slopes where ground water intercepts the soil surface. Ground water inflows maintain a fairly constant water level year round, which leads to an accumulation of organic material and gives fens a spongy character. Fens are dominated by herbaceous plants, such as grasses and sedges, and look like meadows. Peatlands provide important benefits to the watershed by preventing or reducing the risk of floods, improving water quality through their filtering capability and provide unique habitat for plant and animal communities.

Marshland

Marshes are one of the broadest categories of wetlands and in general harbor the greatest biological diversity. Natural marshes may occur next to open bodies of water that do not flow, but have fluctuating water levels. Marshlands form depressions in the landscape known as ponds and kettle ponds, as fringes around lakes, and along slow-flowing streams and rivers. Playa lakes that occur in the eastern plains are also considered marshlands. Marshes typically have mineral soils but can also accumulate organic material. They are frequently or continually inundated and characterized by herbaceous vegetation adapted to saturated soil conditions. Associated vegetation is typically emerges out of the water such as cattails and bulrush, or submerged or floating such as pondweed and duckweed. Marshes provide excellent habitat and forage for insects, mollusks, crustaceans, algae and water fowl.

Wet Meadow

A wet meadow is a grassland with waterlogged soil near the surface but without standing water for most of the year. Wet meadows depend on precipitation or ground water as a water source. Wet meadows are also maintained by water from irrigated croplands. They are found in depressions or on flat landscapes (valleys and

irrigated pasturelands). A wet meadow typically appears darker or greener than the surrounding lands and is the most common wetland type in Colorado. Wet meadows are dominated by herbaceous plants such as grasses and sedges. Wet meadows are beneficial for improving water quality and providing habitat for a variety of wildlife such as deer, elk, and sandhill cranes.

Riparian

Riparian wetlands in Colorado are depicted in Map 24. These wetlands are associated with moving water and are intermittently or seasonally flooded. They typically have a high water table because of their proximity to subsurface water. Riparian wetlands are commonly recognized by bottomland, floodplain and streambank vegetation dominated by trees and shrubs. Riparian wetlands are particularly productive ecosystems and receive large inputs of water and nutrients from upstream sources during flooding. Riparian wetlands and their associated habitat are important for nutrient cycling, and food chain support. They provide nesting habitat, litter, fish habitat and forage for wildlife.

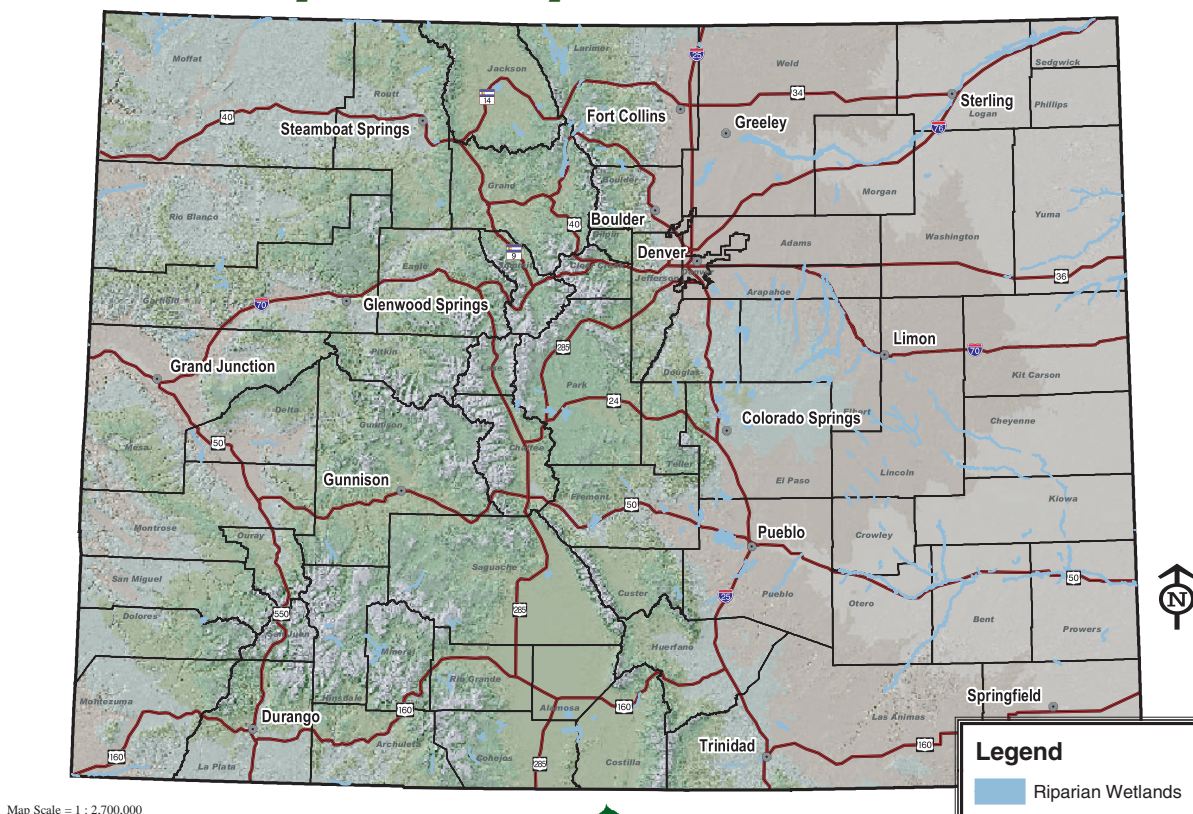
Programmatic Efforts

Today, wetlands conservation in Colorado is a systematic and comprehensive approach involving dedicated funding, wetland and waterfowl experts, and cooperative partners, including private landowners and public land agencies. Primarily, the Division of Wildlife (DOW) and Colorado State Parks within the Department of Natural Resources, have analyzed wetland resources and coordinated protection efforts among state, local, and non-profit agencies to achieve conservation outcomes. The EPA is involved in wetlands protection through regulatory and non-regulatory wetlands programs.

Division of Wildlife Wetlands Program

To address the growing need for a comprehensive approach to protecting the remaining wetlands in the state of Colorado, the Division of Wildlife launched an aggressive effort called the Wetlands Program. The Wetlands Program was designed to coordinate the various DOW wetlands protection efforts. The Wetlands Program is voluntary and incentive-based, and focuses on the protection of wetlands via partnerships. In addition to The Nature Conservancy,

Map 24: Known Riparian Wetlands in Colorado



Ducks Unlimited, Great Outdoors Colorado, the DOW and landowners, Wetlands Program partners included Partners for Fish and Wildlife and Colorado State Parks.

The key objective of the Wetlands Program is to protect 100,000 acres of biologically significant wetlands and associated uplands for wetland-dependent species – imperiled, threatened, endangered, decreasing, or stable - by 2005. The Wetlands Program is a strategic and comprehensive approach to conservation that includes not only waterfowl wetlands but other wetlands as well. The efforts have benefited more than two dozen different species of wildlife.

The goals of the Wetlands Program are to protect wetland-dependent wildlife through incentives and voluntary means. The means to achieve protection can be accomplished through the following actions: restoration, enhancement, management, or acquisition of fee title, or conservation easement (by a non-governmental organization, private individual or government entity).

The Wetlands Program uses 11 strategies to achieve its goals and objectives:

- Wetlands Initiative
- Wetland Partnerships
- Communities Wetlands Strategies
- North American Waterfowl Management Plan Playa Lakes and Intermountain West Joint Ventures in Colorado
- USDA Farm Bill Liaison
- US Clean Water Act, Section 404 Program Liaison
- Colorado Waterfowl Stamp
- Wetlands Project Database
- Wetlands Funding Database
- Wetlands Projects Monitoring and Evaluation
- Wetlands Team

Summaries of several key strategies are detailed below.

Wetlands Initiative

One of the key strategies of the Wetlands Program is the Wetlands Initiative (WI). The Wetlands Initiative is a partnership between federal, state and local agencies, non-profit organizations and private landowners including DOW, Ducks Unlimited, The Nature Conservancy, Partners for Fish and Wildlife, Great Outdoors Colorado, and Colorado State Parks.

The catalyst for launching the WI stemmed from project proposals generated by Focus Area Committees and WI Partners. Project proposals contained information about the specific wetland sites, baseline inventory data, a description of the benefits to the wetlands and/or the wetland species, and cost estimates. The Committees and Partners targeted 10 wetland Focus Areas for conservation (See Map 25), which are listed below. This information formed the foundation for a funding proposal to Great Outdoors Colorado and activated the Wetlands Initiative. It is at the Focus Area level that grassroots support for wetlands protection is most focused.

In 1997 the Division of Wildlife and its Partners were awarded a \$4.46 million Legacy Grant by Great Outdoors Colorado (GOCO) to fund the Wetlands Initiative. This grant award was matched by other Wetland Initiative Partners to launch a \$17.4 million effort to protect wetlands. The vision outlined by the Wetland Initiative was to use these funds to protect a minimum of 15,000 acres of biologically significant wetlands and associated uplands by June 2000. In actuality, the Wetland Initiative Partners reported that wetland protection efforts had far surpassed their initial objective. As a result of three years of cooperative partnering on the 10 focus areas, the WI have protected 13,916 acres of biologically significant wetlands and 85,339 acres of associated uplands – a total of approximately 99,000 acres – between the years 1997 and 2000.

Waterfowl Stamp Program

The Waterfowl Stamp Program was initiated in 1989 with the passage of legislation requiring that waterfowl hunters have a valid state waterfowl stamp in their possession while hunting. The purpose of the legislation was to provide funds for the benefit of waterfowl-

wetlands habitat. The Waterfowl Stamp Program has provided water-fowl wetlands projects and a model for wetlands conservation in the state. Administered by the DOW, the Waterfowl Stamp Program involves partnerships with Ducks Unlimited, USFWS Partners for Wildlife and Refuges, Bureau of Land Management, U.S. Forest Service, Colorado Wildlife Heritage Foundation, private landowners, and many others.

Since 1989, the Waterfowl Stamp Program and its partners have completed many waterfowl-wetlands projects throughout the state including wetland restoration, creation, enhancement, and purchase. In addition to the wetland protection projects, the Waterfowl Stamp Program has increased waterfowl hunting opportunities, the issuance of 12 original-art waterfowl stamps, and the formation of many wetland partnerships.

Colorado State Parks

State Parks has been involved in inventorying and protecting wetlands for many years. Specifically, numerous EPA-funded wetland assessments have been conducted and in 1995, wetland resource plans for 40 state parks were developed, through the Colorado Natural Areas Program. Comprehensive stewardship plans for many state parks have recently been completed detailing many wetland and water-related issues.

State Parks has also been conducting systematic surveys of State Land Board (SLB) lands for the last nine years. This statewide project is about 80 percent complete. In collaboration with SLB, State Parks has applied for another EPA grant to integrate and expand the earlier wetlands effort into a comprehensive, system-wide Wetland Management Program.

The Colorado Natural Areas Program (CNAP), a program managed by Colorado State Parks, has been involved in numerous wetlands protection efforts in Colorado. CNAP has participated in The Comprehensive Statewide Wetlands Classification and Characterization (CSWCC) project, a three-year effort of the Colorado Natural Heritage Program (CNHP), in partnership with Colorado State University, and the Colorado Department of Natural Resources, Division of Wildlife (DOW) Wetlands Program to integrate previously collected data and develop a floristic classification for the wetlands of Colorado. It

also establishes a basis for focusing wetland research, land management, and conservation efforts where they will be most effective and beneficial.

CNAP conducted wetland inventories and plans for 40 state parks. These plans have proved to be a critical tool in resource management at state parks, and efforts are underway to complete mapping for recently acquired acreages and new parks.

Delineation of wetlands on Colorado's 40 state parks and preparation of the Best Management Practices guide were funded by a grant to the Colorado Department of Natural Resources from the U.S. Environmental Protection Agency.

Environmental Protection Agency

The Environmental Protection Agency (EPA), in partnership with other government agencies, nonprofit organizations and local citizens, shares responsibility for protecting Colorado's wetland resources. EPA's Wetlands Division incorporates a watershed approach in much of its work with other agencies, states, and other organizations. Activities related EPA wetland activities include the following:

- Funding State watershed projects through State Wetland Protection Grants
- Developing guidance linking wetlands protection programs to watershed planning efforts
- Integrating a watershed approach into Federal floodplain management activities
- Supporting a series of national and regional meetings on wetlands and regional watershed planning.

Since 1990, EPA has been providing grants to State, Tribal, and local governments through the Wetlands Program Development Grants. DOW and Colorado State Parks, through its Natural Areas Program, have been recipients of numerous Wetlands Program Development Grants which have helped create an effective wetlands conservation program in Colorado.

The EPA's Adopt-A-Wetland Program encourages local groups to act as guardians of wetland resources by becoming familiar with Section 404 of the Clean Water Act. Once a completed application for dredging or filling a wetland is submitted to the Army Corps of Engineers office, a public notice is issued, and a public comment period follows where citizens are encouraged to express their concerns.

EPA's Wetlands program consists of both regulatory and non-regulatory components. Activities under the regulatory component include permit review and veto authority over the US Army Corps of Engineers through the Clean Water Act, Section 404 permitting program. EPA also has enforcement responsibility of Section 404.

Summary

A significant trend is emerging with respect to resource protection and recreation needs: the role of partnership and coordination is one of the most effective means for achieving wetlands protection. Government agencies and resource protection professionals at all levels are discovering that by expanding partnerships in conservation and recreation, we can develop strategies that address comprehensive actions

and create significant change across regions. The synergy of these forged partnerships can be illustrated by the success of the partners involved in the Wetlands Program and the Wetlands Initiative.

For more information on Wetlands or to view publications on wetland protection efforts contact:

Contact	Phone	Web Site
Colorado Division of Wildlife	303-297-1192	www.wildlife.state.co.us
Ducks Unlimited	719-852-0925	www.ducks.org
The Nature Conservancy	303-444-2950	www.nature.org
USFWS Partners for Fish and Wildlife	303-275-2435	www.partners.fws.gov
Colorado State Parks	303-866-3437	www.parks.state.co.us
Colorado Natural Areas Program	303-866-3203	www.parks.state.co.us/cnap
Playa Lakes Joint Venture	303-659-8750	www.northamerican.fws.gov/nawmphp.html
Intermountain West Joint Venture	801-524-5110	www.northamerican.fws.gov/nawmphp.html
Wetlands Focus Area Committee	303-291-7141	www.wildlife.state.co.us
Colorado Natural Heritage Program	970-491-1309	www.cnhp.colostate.edu
Rocky Mountain Bird Observatory	303-659-4348	www.rmbo.org
Colorado Wildlife Heritage Foundation	303-291-7212	Karin.ballard@state.co.us

APPENDIX D - INFORMATION RESOURCES

Subject	Agency/ Organization	Website	Phone Number	Address	Email
Federal Recreation Providers	Bureau of Land Management (BLM)	www.blm.gov	(202) 452-5125	Office of Public Affairs 1849 C St., Room 406-LS Washington, DC 20240	
	BLM - Colorado State Office	www.co.blm.gov	(303) 239-3600	2850 Youngfield St. Lakewood, CO 80215	
	Arkansas Headwaters Recreation Area	parks.state.co.us/ default.asp?parkID=9 6&action=park	(719) 539-7289	307 West Sackett P.O. Box 126 Salida, CO 81201	
	Canyons of the Ancients National Monument	www.co.blm.gov/ canm/index.html	(970) 882-811	27501 Highway 184 Dolores, CO 81323	
	Colorado Canyons National Conservation Area	www.co.blm.gov/ colocanyons/ index.htm	(970) 244-3000	2815 H Rd.. Grand Junction, CO 81506	

Subject	Agency/ Organization	Website	Phone Number	Address	Email
	Columbine Field Office		(970) 385-1368	110 W. 11th St. Durango, CO 81301	
	Del Norte Field Office		(719) 657-3321	13308 W. Hwy. 160 Del Norte, CO 81132	
	Dolores Field Office		(970) 882-7296	100 N. 6th St. P.O. Box 210 Dolores, CO 81323	
	Front Range Center (detached)		(719) 852-5941	1803 West Hwy. 160 Monte Vista, CO 81144	
	Glenwood Springs Field Office	www.co.blm.gov/ gsra/gshome.htm	(970) 947-2800	50629 Hwys. 6&24 P.O. Box 1009 Glenwood Springs, CO 81602	
	Grand Junction Field Office	www.co.blm.gov/gjra/ gjra.html	(970) 244-3000	2815 H Rd. Grand Junction, CO 81506	

Subject	Agency/ Organization	Website	Phone Number	Address	Email
	Gunnison Field Office	www.co.blm.gov/gra/ index.html	(970) 641-0471	216 N. Colorado Gunnison, CO 81230	
	Gunnison Gorge National Conservation Area	www.co.blm.gov/ ggnca/index.htm	(970) 240-5300	2505 South Townsend Montrose, CO 81401	
	Kremmling Field Office	www.co.blm.gov/kra/ kraindex.htm	(970) 724-3000	2103 E. Park Ave. P.O. Box 68 Kremmling, CO 80459	
	La Jara Field Office	www.co.blm.gov/ lajara/lajarahome.htm	(719) 274-8971	15571 County Rd. T.5 La Jara, CO 81140	
	Little Snake Field Office	www.co.blm.gov/lsla/ index.htm	(970) 826-5000	455 Emerson St. Craig, CO 81625	
	Pagosa Springs Field Office		(970) 264-2268	P.O. Box 310 Pagosa Springs, CO 81147	

Subject	Agency/ Organization	Website	Phone Number	Address	Email
	Royal Gorge Field Office	www.co.blm.gov/ ccdo/canon.htm	(719) 269-8500	3170 East Main St. Canon City, CO 81212	
	Saguache Field Office	www.co.blm.gov/ saguache/ saghome.htm	(719) 655-2547	46525 Highway 114 P.O. Box 67 Saguache, CO 81149	
	San Juan Field Office	www.co.blm.gov/sjra/ index.html	(970) 247-4874	Durango Public Lands Center 15 Burnett Court Durango, CO 81301	
	Uncompahgre Field Office	www.co.blm.gov/ ubra/index.html	(970) 240-5300	2505 S. Townsend Ave. Montrose, CO 81401	
	White River Field Office	www.co.blm.gov/ wrra/index.htm	(970) 878-3800	73544 Highway 64 Meeker, CO 81641	
	National Park Service	www.nps.gov	(202) 208-6843	1849 C St. NW Washington, DC 20240	

Subject	Agency/ Organization	Website	Phone Number	Address	Email
	National Park Service Regional Office		(303) 969-2500	P.O. Box 25287 12795 West Alameda Parkway Denver, CO 80225- 0287	
	Bent's Old Fort National Historic Site	www.nps.gov/beol/	(719) 383 5010	35110 Hwy.194 East La Junta, CO 81050	BEOL_ Superintendent@nps.gov
	Black Canyon of the Gunnison National Park	www.nps.gov/blca/	(970) 641-2337	102 Elk Creek Gunnison, CO 81230	CURE_ Info@nps.gov
	Colorado National Monument	www.nps.gov/colm/	(970) 858-3617	Colorado National Monument Fruita, CO 81521- 0001	COLM_ Info@nps.gov
	Curecanti National Recreation Area	www.nps.gov/cure/	(970) 641-2337	102 Elk Creek Gunnison, CO 81230	CURE_ Info@nps.gov
	Dinosaur National Monument	www.nps.gov/dino/	(970) 374-3000	4545 E. Highway 40 Dinosaur, CO 81610-9724	DINO_ Superintendent@nps.gov

Subject	Agency/ Organization	Website	Phone Number	Address	Email
	Florissant Fossil Beds National Monument and Preserve	www.nps.gov/flfo/	(719) 378-2312	11500 Highway 150 Mosca, CO 81146- 9798	FLFO_Information@nps.gov
	Great Sand Dunes National Monument and Preserve	www.nps.gov/grsa/	(719) 378-6300	11500 Highway 150 Mosca, CO 81146- 9798	GRSA_Interpretation@nps.gov
	Hovenweep National Monument	www.nps.gov/hove/	(970) 562-4284	McElmo Route Cortez, CO 81321	
	Mesa Verde National Park	www.nps.gov/meve/	(970) 529-4465	P.O. Box 8 Mesa Verde National Park, CO 81330-0008	MEVE_General_Information@nps.gov
	Pony Express National Historic Trail	www.nps.gov/poex/ index.htm	(801) 539-4095	National Trails System Office 324 South State St., Suite 250, P.O. Box 45155 Salt Lake City, UT 84145-0155	LODT_Interpretation@nps.gov
	Rocky Mountain National Park	www.nps.gov/romo/	(970) 586-1206	1000 Highway 36 Estes Park, CO 80517-8397	ROMO_Information@nps.gov

Subject	Agency/ Organization	Website	Phone Number	Address	Email
	Sand Creek Massacre National Historic Site	www.nps.gov/sand/ index.htm	(719) 438 5916	P.O. Box 249 Eads, CO 81036	SAND_ Administration@nps.gov
	Santa Fe National Historic Trail	www.nps.gov/safe/ index.htm	(505) 988-6888	P.O. Box 728 Santa Fe, NM 87504-0728	LODI_ Administration@nps.gov
	Yucca House National Monument	www.nps.gov/yuho/ index.htm	(970) 529-4465	c/o Mesa Verde National Park P.O. Box 8 Mesa Verde, CO 81330	meve_general_ information@nps.gov
	United States Bureau of Reclamation	www.usbr.gov	(202) 513-0501	1849 C St. NW Washington DC 20240-0001	
	Bureau of Reclamation - Denver Office		(303) 445-3000	P.O. Box 25007 Denver Federal Center Denver, CO 80225- 0007	
	Bureau of Reclamation - Upper Colorado Region	www.usbr.gov/uc/	Grand Junction Office: (970) 248- 0601	Upper Colorado Regional Office 125 South State St., Room 6107 Salt Lake City, UT 84138-1102	

Subject	Agency/ Organization	Website	Phone Number	Address	Email
	Bureau of Reclamation - Eastern Colorado	www.usbr.gov/gp/ area_office_ecao.cfm	(970) 667-4410	11056 W. County Rd. 18E Loveland, CO 80537-9711	
	Bureau of Reclamation - Great Plains Region	www.usbr.gov/gp/ index.cfm	(406) 247-7610	P.O. Box 36900 Billings, MT 59107- 6900	gpwebmaster@ gp.usbr.gov
	United States Army Corps of Engineers	www.usace.army.mil/	(202) 761-0660	441 G St., NW Washington, DC 20314-1000	
	Albuquerque District	www.spa.usace.army.mil	(505) 342-3171	4101 Jefferson Plaza NE Albuquerque, NM 87109	
	Sacramento District	www.spk.usace.army.mil	(916) 557-7490	1325 J St. Sacramento, CA 95814	
	Omaha District	www.nwo.usace.army.mil	(402) 221-3917	Omaha, NE 68102	
	Kansas City District	www.nwk.usace.army.mil	(816) 983-3201	601 E. 12th St. Kansas City, Mo 64106	
	United States Fish and Wildlife Service	mountain- prairie.fws.gov	(303) 236-7917	134 Union Blvd. Lakewood, CO 80228	MountainPrairie@fws.gov

Subject	Agency/ Organization	Website	Phone Number	Address	Email
	Colorado Field Office	mountain-prairie.fws.gov/es/Colorado/Lakewood%20and%20GrandJunction.htm	(303) 275-2370	Mailing address: Denver Federal Center P.O. BOX 25486 Denver, CO 80225-0046 Physical Address: 755 Parfet St. Suite 361 Lakewood, CO 80215-5599	
	Western Colorado Field Office	mountain-prairie.fws.gov/es/Colorado/Lakewood%20and%20GrandJunction.htm	(970) 243-2778	764 Horizon Drive, South Annex A Grand Junction, CO 81506-3904	
	Alamosa/Monte Vista National Wildlife Refuge Complex	alamosa.fws.gov/	(719) 589-4021	9383 El Rancho Lane Alamosa, CO 81101	r6rw_alm@fws.gov/
	Arapaho National Wildlife Refuge	arapaho.fws.gov/	(970) 723-8202	Box 457 Walden, CO 80480	Arapaho@fws.gov

Subject	Agency/ Organization	Website	Phone Number	Address	Email
	Browns Park National Wildlife Refuge	brownsark.fws.gov/	(970) 365-3613	1318 Highway 318 Maybell, CO 81640	BrownsPark@fws.gov
	Rocky Flats National Wildlife Refuge	rockyflats.fws.gov/	(303) 289-0232	US Fish and Wildlife Service Building 121 Commerce City, CO 80022	RockyFlats@fws.gov -
	Rocky Mountain Arsenal	rockymountainarsenal.fws.gov/			rockymountainarsenal@fws.gov
	Two Ponds National Wildlife Refuge	twoponds.fws.gov/	(303) 289-0232 ext. 5207	c/o Rocky Mountain Arsenal National Wildlife Refuge Building 111 Commerce City, CO 80022-1748	RockyMountainArsenal@fws.gov
	United States Forest Service	www.fs.fed.us	(202) 205-8333	P.O. Box 96090 Washington, D.C. 20090-6090	http:// www.fs.fed.us/
	Rocky Mountain Region Office	www.fs.fed.us/r2	(303) 275-5350	740 Simms St. P.O. Box 25127 Golden, CO 80225- 0127	
	Arapaho/Roosevelt National Forest and Pawnee National Grasslands	www.fs.fed.us/r2/arnf	(970) 498-1100	240 W. Prospect Rd.. Fort Collins, CO 80526-2098	

Subject	Agency/ Organization	Website	Phone Number	Address	Email
	Boulder Ranger District	www.fs.fed.us/r2/arnf/ districts/brd/index.htm	(303) 541-2500	2140 Yarmouth Ave. Boulder, CO 80301	
	Canyon Lakes Ranger District	www.fs.fed.us/r2/ arnf/districts/clrd/ index.htm	(970) 498-2770	1311 South College Fort Collins, CO 80524	
	Clear Creek Ranger District	www.fs.fed.us/r2/ arnf/districts/ccrd/ index.htm	(303) 567-3000	101 Chicago Creek Rd.. P.O. Box 3307 Idaho Springs, CO 80452	
	Pawnee National Grassland	www.fs.fed.us/r2/ arnf/districts/png/ index.htm	(970) 353-5004	660 "O" St. Greeley, CO 80631	
	Sulphur Ranger District	www.fs.fed.us/r2/arnf/ districts/srd/index.htm	(970) 887-4100	9 Ten Mile Drive P.O. Box 10 Granby, CO 80446 0010	

Subject	Agency/ Organization	Website	Phone Number	Address	Email
	Grand Mesa, Uncompahgre and Gunnison National Forests	www.fs.fed.us/r2/ gmug/	(970) 874-6600	2250 Highway 50 Delta, CO 81416- 8723	r2_gmug_visitor_ information@fs.fed.us
	Grand Valley Ranger District (Collbran)		(970) 487-3534	P.O. Box 330 218 High St. Collbran, CO 81624	
	Grand Valley Ranger District (Grand Junction)		(970) 242-8211	2777 Crossroads Blvd, Suite A Grand Junction, CO 81506	
	Gunnison Ranger District		(970) 641-0471	216 N. CO Gunnison, CO 81230	
	Gunnison Ranger District (Lake City)		(970) 641-0471 or (970) 944- 2500	P.O. Box 89 Lake City, CO 81235	
	Ouray Ranger District		(970) 240-5300	2505 S. Townsend Montrose, CO 1401	

	Norwood Ranger District		(970) 327-4261	P.O. Box 388 1150 Forest Norwood, CO 81423	
	Paonia Ranger District		(970) 527-4131	P.O. Box 1030 North Rio Grande Ave. Paonia, CO 81428	
	Medicine Bow/Routt National Forests	www.fs.fed.us/r2/mbr/	(307) 745-2300	2468 Jackson St. Laramie, WY 82070	
	Hahns Peak/Bears Ears Ranger District	www.fs.fed.us/r2/mbr/rd-hpbe/index.shtml	(970) 879-1870	925 Weiss Dr. Steamboat Springs, CO 80487-9315	
	Middle Park Ranger District	www.fs.fed.us/r2/mbr/rd-parks/index.shtml	(970) 724-3437	P.O. Box 1210 2103 E. Park Ave. Kremmling, CO 80459	
	North Park Ranger District	www.fs.fed.us/r2/mbr/rd-parks/index.shtml	(970) 723-8204	P.O. Box 158 100 Main St. Walden, CO 80480	
	Yampa Ranger District	www.fs.fed.us/r2/mbr/rd-yampa/index.shtml	(970) 638-4516	300 Roselawn Ave. P.O. Box 7 Yampa, CO 80483	

	Pike and San Isabel National Forests and Commanche National Grasslands	www.fs.fed.us/r2/ psicc/	(719) 553-1400	2840 Kachina Drive Pueblo, CO 81008	
	Comanche National Grassland - Carrizo Unit	www.fs.fed.us/r2/ psicc/coma/	(719) 523-6591	P.O. Box 127 27204 Highway 287 Springfield, CO 81073	
	Commanche National Grassland - Timpas Unit	www.fs.fed.us/r2/ psicc/coma/	(719) 384-2181	1420 East 3rd. St. La Junta, CO 81050	
	Leadville Ranger District	www.fs.fed.us/r2/ psicc/leadville/	(719) 486-0749	2015 North Poplar Leadville, CO 80461	
	San Carlos Ranger District	www.fs.fed.us/r2/ psicc/sanc/	(719) 269-8500	3170 East Main St. Canon City, CO 81212	

	Salida Ranger District	www.fs.fed.us/r2/psicc/sal/	(719) 539-3591	325 W. Rainbow Blvd. Salida, CO 81201	
	South Park Ranger District	www.fs.fed.us/r2/psicc/sopa/	(719) 836-2031	P.O. Box 219 320 Hwy 285 Fairplay, CO 80440	
	South Platte Ranger District	www.fs.fed.us/r2/psicc/spl/	(303) 275-5610	19316 Goddard Ranch Ct. Morrison, CO 80465	
	Rio Grande National Forest	www.fs.fed.us/r2/riogrande/	(719) 852-5941	1803 W. Hwy. 160 Monte Vista, CO 81144	mailroom_r2_riogrande@fs.fed.us
	Conejos Peak Ranger District		(719) 274-8971	15571 County Rd. T.5 LaJara, CO 81140	
	Divide Ranger District		(719) 657-3321	13308 West Hwy. 160 Del Norte, CO 81132	

	Divide Ranger District (Creede)		(719) 658-2556	3rd. & Creede Ave. Creede, CO 81130	
	Saguache Ranger District		(719) 655-2547	46525 State Hwy. 114 Saguache, CO 81149	
	San Juan National Forest	www.fs.fed.us/r2/sanjuan/	(970) 247-4874	15 Burnett Court Durango, CO 81301	
	Columbine Ranger District - East		(970) 884-2512	367 South Pearl St. P.O.Box 439 Bayfield, CO 81122	
	Columbine Ranger District - West		(970) 884-2512	110 W. 11th Durango, CO 81301	
	Dolores Ranger District		(970) 882-7296	100 North Sixth P.O.Box 210 Dolores, CO 81323	
	Pagosa Ranger District		(970) 264-2268	180 Second St P.O.Box 310 Pagosa Springs, CO 81147	

	White River National Forest	www.fs.fed.us/r2/whiteriver/	(970) 945-2521	900 Grand Ave. Glenwood Springs, CO 81602	
	Aspen Ranger District		(970) 925-3445	806 West Hallam Aspen, CO 81611	
	Blanco Ranger District		(970) 878-4039	317 E. Market St. Meeker, CO 81641	
	Dillon Ranger District		(970) 468-5400	680 River Parkway P.O. Box 620 Silverthorne, CO 80498	
	Eagle Ranger District		(970) 328-6388	125 West Fifth St. P.O. Box 720 Eagle, CO 81631	
	Holy Cross Ranger District		(970) 827-5715	24747 U.S. Hwy 24 P.O. Box 190 Minturn, CO 81645	

	Rifle Ranger District		(970) 625-2371	0094 County Rd. 244 Rifle, CO 81650	
	Sopris Ranger District		(970) 963-2266	620 Main St. P.O. Box 309 Carbondale, CO 81623	
State Recreation Providers and Resources	Department of Local Affairs	www.dola.state.co.us	(303) 866-4988	1313 Sherman St. Room 521 Denver, CO 80203	
	Field Regions and Representatives				
	Central Region (Counties served: Arapahoe, Clear Creek, Denver, Douglas, El Paso, Elbert, Jefferson Teller)		(303) 273-1787	Clay Brown 15075 S. Golden Road Golden, CO 80401	clay.brown@state.co.us
	Northeastern (Counties served: Cheyenne, Kit Carson, Lincoln, Logan, Morgan, Phillips, Sedgwick, Washington, Yuma)		(970) 522-2672	Kent Gumina 119 Poplar St. Sterling, CO 80751	kent.gumina@state.co.us

	North Central (Counties served: Adams, Boulder, Broomfield, Gilpin, Larimer, Weld)		(970) 679-4501	Don Sandoval 150 E. 29th St., Ste. 215 Loveland, CO 80538	don.sandoval@state.co.us
	Northern Mountain (Counties served: Eagle, Grand, Jackson, Park, Pitkin, Routt, Summit)		(970) 668-6160	Cathy Shipley 602 Galena St. P.O. Box 5507 Frisco, CO 80443- 5507	cathy.shipley@state.co.us
	Northwestern (Counties served: Delta, Garfield, Gunnison, Hinsdale, Mesa, Moffat, Rio Blanco)		(970) 248-7333	Tim Sarmo 222 S. 6th St., Rm. 409 Grand Junction, CO 81501	tim.sarmo@state.co.us
	Southwestern (Counties served: Archuleta, Dolores, La Plata, Montezuma, Montrose Ouray, San Juan, San Miguel)		(970) 247-7311	Ken Charles Fort Lewis College 1000 Rim Dr. Durango, CO 81302	charles_k@fortlewis.edu

	South Central (Counties served: Alamosa, Chaffee, Conejos, Costilla, Custer, Fremont, Lake, Mineral, Rio Grande, Saguache)		(719) 852-9429	Debra Downs P.O. Box 127 Monte Vista, CO 81144	deb.downs@state.co.us
	Department of Local Affairs, Demography Section	www.dlg.oem2.state.co.us/ demog/demog.htm	(303) 866-4147	1313 Sherman St. Room 521 Denver, CO 80203	dola.helpdesk@state.co.us
	Colorado Scenic and Historic Byways Commission (Colorado Department of Transportation)	www.coloradobyways.org/	(800) 999-4997	Public Relations Office 4201 E Arkansas Ave Denver, CO 80222	sally.pearce@dot .state.co.us
	Colorado Tourism Office	www.colorado.com	1-800- COLORADO or (303) 892-3885	1625 Broadway, Suite 1700 Denver, CO 80202	
	Great Outdoors Colorado	www.goco.org	(303) 863-7522	1600 Broadway, Suite 1650 Denver, CO 80202	info@goco.org
	Colorado Department of Natural Resources	www.dnr.state.co.us			
	Colorado Water Conservation Board	www.cwcb.state.co.us	(303) 866-3441	1313 Sherman St. Room #721 Denver, CO 80203	

	Colorado State Land Board	www.trustlands.state.co.us	(303) 866-3454	1313 Sherman St. Rm. 621 Denver, CO 80203	
	Colorado Division of Forestry				
	Colorado State Forest Service	www.colostate.edu/depts/CSFS/	(970) 491-6303	Colorado State Forest Service Colorado State University Fort Collins, CO 80523	
	Colorado Division of Water Resources		(303) 866-3581	1313 Sherman St. Room 818 Denver, CO 80203	
	Colorado Division of Wildlife		(303) 297-1192	6060 Broadway, Denver, CO 80216	
	Denver Headquarters and Central Region Office		(303) 297-1192	6060 Broadway Denver, CO 80216	
	Northeast Region Service Center		(970) 472-4300	317 West Prospect Rd. Fort Collins, CO 80526	

	Northwest Region Service Center		(970) 255-6100	711 Independent Ave. Grand Junction, CO 81505	
	Southeast Region Service Center		(719) 227-5200	4255 Sinton Rd. CO Springs, CO 80907	
	Southwest Region Service Center		(970) 252-6000	2300 South Townsend Ave. Montrose, CO 81401	
	Colorado State Parks	www.parks.state.co.us	(303) 866-3203	1313 Sherman St. Room #618 Denver, CO 80203	parksinfo@state.co.us
	High Plains Region Regional Office		(303) 866-3203	1313 Sherman St. Room #618 Denver, CO 80203	
	High Plains Region Service Center		(970) 491-1168	3745 E Prospect Rd #2 Fort Collins, CO 80525	
	Rocky Mountain Regional Office		(970) 434-6862	P.O. Box 700 Clifton, CO 81520	
	Rocky Mountain Region Service Center		(719) 227-5200	4255 Sinton Rd. CO Springs, CO 80907	

	Arkansas Headwaters Recreation Area	www.parks.state.co.us/default.a sp?parkID=96&action=park	(719) 539-7289	307 W. Sackett Ave. Salida, CO 81201	ahra@state.co.us
	Barr Lake State Park	www.parks.state.co.us/default.a sp?parkID=67&action=park	(303) 659-6005	13401 Picadilly Rd. Brighton, CO 80603	barr.lake@state.co.us
	Bonny Lake State Park	www.parks.state.co.us/default.a sp?parkID=71&action=park	(970) 354-7306	30010 Rd. 3 Idalia, CO 80735	bonny.lake.park@state .co.us
	Boyd Lake State Park	www.parks.state.co.us/default.a sp?parkID=74&action=park	(970) 669-1739	3720 N County Rd. 11 C Loveland, CO 80538	boyd.lake@state.co.us
	Castlewood Canyon State Park	www.parks.state.co.us/default.a sp?parkID=76&action=park	(303) 688-5242	2989 S. State Highway 83 Franktown, CO 80116	castlewood.canyon@sta te.co.us
	Chatfield State Park	www.parks.state.co.us/default.a sp?parkID=78&action=park	(303) 791-7275	11500 N Roxborough Park Rd. Littleton, CO 80125	chatfield.park@state.co.us

	Cherry Creek State Park	www.parks.state.co.us/default.asp?parkID=80&action=park	(303) 699-3860	4201 South Parker Rd. Aurora, CO 80014	cherry.creek.park@state.co.us
	Cheyenne Mountain State Park	www.parks.state.co.us/default.asp?parkID=102&action=park	(719) 633-4110	2103 N. Weber Colorado Springs, CO 80907	cheyenne.comments@state.co.us
	Colorado River State Park	www.parks.state.co.us/default.asp?parkID=75&action=park	(970) 434-3388	P.O. Box 700 Clifton, CO 81520	colorado.river.park@state.co.us
	Crawford State Park	www.parks.state.co.us/default.asp?parkID=79&action=park	(970) 921-5721	P.O. Box 147 Crawford., CO 81415	crawford.park@state.co.us
	Eldorado Canyon State Park	www.parks.state.co.us/default.asp?parkID=81&action=park	(303) 494-3943	9 Kneale Rd. Box B Eldorado Springs, CO 80025	eldorado.park@state.co.us
	Eleven Mile State Park	www.parks.state.co.us/default.asp?parkID=82&action=park	(719) 748-3401	4229 County Rd. 92 Lake George, CO 80827	eleven.mile.park@state.co.us

	Golden Gate Canyon State Park	www.parks.state.co.us/default.asp?parkID=83&action=park	(303) 582-3707	3873 Highway 46 Golden, CO 80403	golden.gate.park@state.co.us
	Harvey Gap State Park	www.parks.state.co.us/default.asp?parkID=66&action=park	(970) 625-1607	c/o Rifle Gap State Park 0050 County Rd. 219 Rifle, CO 81650	rifle.gap.park@state.co.us
	Highline State Park	www.parks.state.co.us/default.asp?parkID=68&action=park	(970) 858-7208	1800 11.8 Rd. Loma, CO 81524	highline.park@state.co.us
	Jackson Lake State Park	www.parks.state.co.us/default.asp?parkID=65&action=park	(970) 645-2551	26363 County Rd. 3 Orchard, CO 80649	jackson.lake@state.co.us
	John Martin Reservoir State Park	www.parks.state.co.us/default.asp?parkID=84&action=park	(719) 829-1801	30703 Rd. 24 P.O. Box 149 Hasty, CO 81044	john.martin.park@state.co.us
	Lake Pueblo State Park	www.parks.state.co.us/default.asp?parkID=85&action=park	(719) 561-9320	640 Pueblo Reservoir Rd. Pueblo, CO 81005	lake.pueblo.park@state.co.us
	Lathrop State Park	www.parks.state.co.us/default.asp?parkID=92&action=park	(719) 738-2376	70 County Rd. 502 Walsenburg, CO 81089	lathrop.park@state.co.us

	Lory State Park	www.parks.state.co.us/ default.asp?parkID=86&ac tion=park	(970) 493-1623	708 LodgePole Dr. Bellvue, CO 80512	lory.park@state.co.us
	Lone Mesa State Park		(970) 882-2213	Lone Mesa State Park 1321 Railroad Avenue P. O. Box 1047 Dolores, CO 81323	
	Mancos State Park	www.parks.state.co.us/ default.asp?parkID=89&ac tion=park	(970) 533-7065	physical address: 42545 County Rd. N Mancos, CO 81328 mailing address: c/o Lone Mesa State Park P.O. Box 1047 Dolores, CO 81323	
	Mueller State Park	www.parks.state.co.us/ default.asp?parkID=87&ac tion=park	(719) 687-2366	P.O. Box 39 Divide, CO 80814	
	Navajo State Park	www.parks.state.co.us/ default.asp?parkID=90&ac tion=park	(970) 883-2208	1526 County Rd. 982 Box 1697 Arboles, CO 81121	
	North Sterling State Park	www.parks.state.co.us/ default.asp?parkID=61&ac tion=park	(970) 522-3657	24005 County Rd. 330 Sterling, CO 80751	north.sterling.park@st ate.co.us

	Paonia State Park	www.parks.state.co.us/ default.asp?parkID=73&ac tion=park	(970) 921-5721	P.O. Box 147 Crawford, CO 81415	crawford.park@state. co.us
	Pearl Lake State Park	www.parks.state.co.us/ default.asp?parkID=59&ac tion=park	(970) 879-3922	P.O. Box 750 Clark, CO 80428	steamboat.lake@state .co.us
	Ridgway State Park	www.parks.state.co.us/ default.asp?parkID=88&ac tion=park	(970) 626-5822	28555 Highway 550 Ridgway, CO 81432	ridgway.park@state.co.us
	Rifle Falls State Park	www.parks.state.co.us/ default.asp?parkID=63&ac tion=park	(970) 625-1607	0050 County Rd. 219 Rifle, CO 81650	rifle.gap.park@state.co.us
	Rifle Gap State Park	www.parks.state.co.us/ default.asp?parkID=64&ac tion=park	(970) 625-1607	0050 County Rd. 219 Rifle, CO 81650	rifle.gap.park@state.co.us
	Roxborough State Park	www.parks.state.co.us/ default.asp?parkID=94&ac tion=park	(303) 973-3959	4751 Roxborough Drive Littleton, CO 80125	roxborough.park@stat e.co.us
	San Luis State Park	www.parks.state.co.us/ default.asp?parkID=93&ac tion=park	(719) 378-2020	County Lane 6 North P.O. Box 175 Mosca, CO 81146	sanluis.park@state.co.us

	Spinney Mountain State Park	www.parks.state.co.us/ default.asp?parkID=95&ac tion=park	(719) 748-3401	4229 Co Rd. 92 Lake George, CO 80827	eleven.mile.park@state.co.us
	St. Vrain State Park	www.parks.state.co.us/ default.asp?parkID=70&ac tion=park	(303) 678-9402	4995 Weld County Rd. 24-1½ Longmont, CO 80504	barbour.ponds@state.co.us
	Stagecoach State Park	www.parks.state.co.us/ default.asp?parkID=62&ac tion=park	(970) 736-2436	25500 R County Rd. 14 P.O. Box 98 Oak Creek, CO 80467	stagecoach.park@state.co.us
	State Forest State Park	www.parks.state.co.us/ default.asp?parkID=57&ac tion=park	(970) 723-8366	56750 Hwy 14 Walden, CO 80480	state_forest@state.co.us
	Steamboat Lake State Park	www.parks.state.co.us/ default.asp?parkID=58&ac tion=park	(970) 879-3922	P.O. Box 750 Clark, CO 80428	steamboat.lake@state.co.us
	Sweitzer Lake State Park	www.parks.state.co.us/ default.asp?parkID=77&ac tion=park	(970) 874-4258	1735 E. Rd. P. O. Box 173 Delta, CO 81416	sweitzer.park@state.co.us

	Sylvan Lake State Park	www.parks.state.co.us/ default.asp?parkID=72&ac tion=park	(970) 328-2021	15000 Brush Creek Rd. P.O. Box 1475 Eagle, CO 81631	sylvan.lake.park@stat e.co.us
	Trinidad Lake State Park	www.parks.state.co.us/ default.asp?parkID=91&ac tion=park	(719) 846-6951	32610 Highway 12 Trinidad, CO 81082	trinidad.lake@state.co.us
	Vega State Park	www.parks.state.co.us/ default.asp?parkID=69&ac tion=park	(970) 487-3407	Box 186 Collbran, CO 81624	vega.park@state.co.us
	Yampa River State Park	www.parks.state.co.us/ default.asp?parkID=60&ac tion=park	(970) 276-2061	P.O. Box 759 Hayden, CO 81639	yampa.river@state.co.us
Colorado Council of Governments and Regional Organizations	Action 22, Inc.	www.action22.org	(719) 560-9897	503 N. Main Street Ste 310 P.O. Box 4097 Pueblo, CO 81003	action22@action22.org
	Associated Governments of Northwest Colorado		(970) 625-1723	P.O. Box 351 Rifle, CO 81650	watchdogagnc@aol.com

	Denver Regional Council of Governments	www.drcog.org	(303) 455-1000	4500 Cherry Creek Drive South Suite 800 Denver, CO 80246-1531	drcog@drcog.org
	East Central Council of Governments (Prairie Development Corporation)	www.prairiedevelopment.com	(719) 348-5562 or 1-800-825-0208	128 Colorado Ave., Box 202 Stratton, CO 80836	pdcc@prairiedevelopment.com
	Northeastern Colorado Association of Local Governments	www.northeasterncolorado.com	(866) 333-8762		info@northeasterncolorado.com
	Northwest Council of Governments	www.nwc.cog.co.us	(970) 468-0295	P.O. Box 2308 249 Warren Ave. Silverthorne, CO 80498	
	Pikes Peak Area Council of Governments	www.ppacg.org	(719) 471-7080	15 South Seventh St. Colorado Springs, CO 80905	
	Progressive 15	www.progressive15.org	(970) 664-2200	P.O. Box 248 Seibert, CO 80834	rdykstra@progressive15.org
	Pueblo Area Council of Governments	www.co.pueblo.co.us	(719) 583-6000	215 W. 10th St. Pueblo, CO 81003	county@co.pueblo.co.us
	Region 9 Economic Development District	www.scan.org	(970) 247-9621	295A Girard Durango, CO 81301	

	Region 10 - League for Economic Assistance and Planning	www.montrose.org/region10	(970) 249-2436	300 North Cascade, Suite #1, Montrose, CO 81401	
	San Luis Valley Council of Governments (San Luis Valley Development and Resources Group)	www.slvdrg.org	(719) 589-6299	626 Fourth St. P.O. Box 300 Alamosa, CO 81101	
	South Central Council of Governments		Trinidad: (719) 845-1133 Walsenburg: (719) 738-2205	Trinidad Office 300 Bonaventure Trinidad, CO 81082 Walsenburg Office 928 Russell Ave. Walsenburg, CO 81089	
	Upper Arkansas Area Council of Governments	www.uaacog.com	(719) 275-8350	Administration Office 330 Royal Gorge Boulevard Canon City, CO 81212	uaacog@ris.net
Private Industry Associations	Colorado Campground and Lodge Owners Association		(970) 247-5406	Camp Lightner Creek 1567 CR 207 Durango, CO 81301	president@campcolorado.com

	Colorado River Outfitters Association	www.croa.org	(303) 280-2554	P.O Box 1662 Buena Vista, CO 81211	
	Colorado Ski Country USA	www.coloradoski.com	(303) 837-0793	1507 Blake St. Denver, CO 80202	thinksno@coloradoski.com
Non-Profit Organizations	Bicycle Colorado	www.bicyclecolo.org	(303) 417-1544	Union Station 1701 Wynkoop St. Suite 236 Denver, CO 80202	info@bicyclecolo.org
	Boulder County Horse Association	www.boulderhorse.org		P.O. Box 19601 Boulder, CO 80308-2601	info@boulderhorse.org
	Colorado Alliance for Environmental Education	www.caee.org	(303) 273-9527	15260 S. Golden Rd. Golden, CO 80401	info@caee.org
	Colorado Backcountry Horseman	www.bchcolorado.org	(719) 269-3460	P.O. Box 244 Canon City, CO 81212	thejswarms@piopc.net
	Colorado Cattlemen's Agricultural Land Trust	cca.beef.org/pages/ccalt-home.htm	(303) 431-6422	8833 Ralston Rd., Arvada, CO 80002	ccaglt@aol.com

	Colorado Coalition of Land Trusts	www.cclt.org	(303) 271-1577	P.O. Box 102257 Denver, CO 80250-2257	
	Colorado Conservation Trust	www.coloradoconservationtrust.org	(720) 565-8289	2334 Broadway Suite A Boulder, CO 80304	coctinfo@coct.org
	The Continental Divide Trail Alliance	www.cdtrail.org	(303) 838-3760	P.O. Box 628 Pine, CO 80470	info@cdtrail.org
	Colorado Fourteeners Initiative	www.coloradofourteeners.org	(303) 278-7525	710 Tenth St., Suite 220 Golden, CO 80401	cfi@14ers.org
	Colorado Horse Council	www.cohoco.com	(303) 292-4981	420 E. 58th Ave. Denver, CO 80216	cohoco@cohoco.com
	Colorado Horse Development Authority	www.chda.org	(303) 292-4981	420 E. 58th Ave., Denver, CO 80216	chda@chda.org
	Colorado Mountain Club	www.cmc.org	(303) 279-3080	710 10th St. Golden, CO 80401	cmcoffice@cmc.org
	Colorado Off-Highway Coalition	www.cohvco.org		P.O. Box 620523 Littleton, CO 80162	issues@cohvco.org

	Colorado Open Lands	coloradoopenlands.org	(303) 988-2373	274 Union Blvd, Suite 320 Lakewood, CO 80228	
	Colorado Plateau Mountain Biking Association	www.copmoba.com			
	The Colorado Trail Foundation	www.coloradotrail.org	(303) 384-3729	710 10th St., #210 Golden, CO 80401-5843	ctf@coloradotrail.org
	Colorado Wildlife Heritage Foundation	wildlife.state.co.us/CWHF/ index.htm	(303) 291-7212	administrative offices: 6060 Broadway, Denver, CO 80216 mailing address: P.O. Box 211512, Denver, CO 80221	
	Colorado Youth Corps Association	www.cyca.org	(303) 825-6246	370 17th St., Suite 5300 Denver, CO 80202	
	The Conservation Fund	www.conservationfund.org	(303) 444-4369	Western Regional Office 1942 Broadway, Suite 323 Boulder, CO 80302	postmaster@conservationfund.org
	The Nature Conservancy - Colorado Chapter	nature.org/wherewework/ northamerica/states/ colorado/	(303) 444-2950	2424 Spruce St. Boulder, CO 80302	colorado@tnc.org

	International Mountain Bicycling Association	www.imba.com	(303) 545-9011 (888) 442-4622	Physical address: 207 Canyon - Suite 301 Boulder, CO 80302 Mailing address: P.O. Box 7578 Boulder, CO. 80306	info@imba.com
	Outward Bound West	www.outwardboundwest.org	(720) 497-2400 or (888) 837-5205	910 Jackson St. Golden, CO 80401	info@obwest.org
	The Platte River Greenway Alliance	www.greenwayfoundation.org	(303) 455-7109	1550 Platte St. Suite C Denver, CO 80202	info@greenwayfoundation.org
	The Poudre River Trail Corridor, Inc.	www.poudretrail.org	(970) 350-9783	1100 10th St., Suite 202 Greeley, CO 80631	poudretrail@ci.greeley.co.us
	Rocky Mountain Elk Foundation	www.rmef.org	1-800-CALL ELK (1-800-225-5355) or (406) 523-4500	2291 W Broadway P.O. Box 8249 Missoula, MT 59807	info@rmef.org
	Rocky Mountain Field Institute	www.rmfi.org	(719) 471-7736	1520 Alamo Ave. Colorado Springs, CO 80907	rmfibox@aol.com
	The Sand Creek Regional Greenway Partnership	www.sandcreekgreenway.org	(303) 393-7700	3401 Quebec St., Suite 8100 Denver, CO 80207	info@sandcreekgreenway.org

	The Trust for Public Land - Colorado Field Office	www.tpl.org	(303) 837-1414	1410 Grant, No. #D210 Denver, CO 80203	coso@tpl.org
	Volunteers for Outdoor Colorado	www.voc.org	(303) 715-1010	600 S. Marion Parkway Denver, CO 80209	voc@voc.org
	The Wilderness Land Trust	www.wildernesslandtrust.org	(970) 963-1725	P.O. Box 1420 Carbondale, CO 81623	
Environmental and Wildlife Advocacy Organizations	The Audubon Society - Colorado State Office	www.auduboncolorado.org	(303) 415-0130	1966 13th St., Suite 230 Boulder, CO 80302	
	The Colorado Environmental Coalition	www.ourcolorado.org	(303) 534-7066	Denver Office 1536 Wynkoop St. #5C Denver, CO 80202	info@cecenviro.org
	Colorado Trout Unlimited	www.cotrout.org	(303) 440-2937	1966 13th St., #LL60 Boulder, CO 80302	
	Colorado Wildlife Federation	www.coloradowildlife.org	(303) 987-0400	P.O. Box 280967 Lakewood, CO 80228	cwf@coloradowildlife.org
	The Sierra Club - Rocky Mountain Chapter	www.rmc.sierraclub.org	(303) 861-8819	1536 Wynkoop St., 4-C Denver, CO 80202	

	Western Colorado Congress	www.wccongress.org	Montrose: (970) 249-1978 Grand Junction: (970) 256-7650	P.O. Box 472 Montrose, CO 81402 or P.O. Box 1931 Grand Junction, CO 81501	
	Western Resource Advocates	www.westernresourceadvocates.org	(303) 444-1188	2260 Baseline Rd., Suite 200 Boulder, CO 80302	info@westernresources.org
	The Wilderness Society	www.wilderness.org	(303) 650-5818	Four Corners Office: 7475 Dakin St. #410 Denver, CO 80221 Wilderness Support Center: 835 East 2nd Ave, Ste 440 P.O. Box 1620 Durango, CO 81302-1620	wsc@twc.org
Recreation Research	The American Recreation Coalition	www.funoutdoors.com	(202) 682-9530	1225 New York Ave. NW Suite 450, Washington, DC 20005	arc@funoutdoors.com
	Colorado by the Numbers: University of Colorado at Boulder Government Publications Library	www.colorado.edu/libraries/govpubs/online.htm			

	National Association of State Park Directors	naspd.indstate.edu/	(520) 298-4924	9894 E. Holden Place Tucson, AZ 85748	naspdglen@cox.net
	Outdoor Industry Association	www.outdoorindustry.org	(303) 444-3353	3775 Iris Ave., Suite 5 Boulder, CO 80301	info@outdoorindustry.org
	Recreation, Heritage and Wilderness Programs at the USFS including the National Visitor Use Monitoring Project	www.fs.fed.us/recreation/programs/nvum/	(202) 205-1706	USDA Forest Service Recreation, Heritage & Wilderness Resources Mail Stop 1125 1400 Independence Ave. SW Washington, D.C. 20090-1125	
	USDA Forest Service, Recreation, Wilderness, Urban Forest, and Demographic Trends Research Group	www.srs.fs.usda.gov/trends/index.html		320 Green St. Athens, GA 30602-2044	
LWCF Information	Americans for Our Outdoor Heritage and Recreation	www.ahrinfo.org	(202) 429-2621	1615 M St., N.W. Washington, DC 20036	
	LWCF and National Forests	www.fs.fed.us/land/staff/LWCF/			

	National Park Service Administration of LWCF	www.nps.gov/ncrc/ programs/lwcf/	(402) 221-3358	Mid-west Support Office National Park Service 1709 Jackson St. Omana, NE 68102	
Additonal Resources	Center of the American West, University of Colorado	www.centerwest.org	(303) 492-4879	CU-Boulder, Macky 229, 282 UCB, Boulder, CO 80309- 0282	info@centerwest.org
	Colorado Parks and Recreation Association	www.cpra-web.org	(303) 231-0943	P.O. Box 1037 Wheat Ridge, CO 80034	
	Colorado Historical Society	www.coloradohistory.org	(303) 866-3682	1300 Broadway Denver, CO 80203	Information@chs .state.co.us
	Fight the Bite Colorado	www.fightthebitecolor ado.com	(877) 462-2911		gsky@tchd.org
	Focus Colorado: Revenue and Economic Forecast (Colorado General Assembly)	www.state.co.us/gov_ dir/leg_dir/lcs/focus/ focus.html			
	University of Colorado at Boulder Government Publications Library	www.colorado.edu/ libraries/govpubs/ colonumb/econ.htm			

APPENDIX E - REFERENCES

- Boyle, Kevin and Brian Roach, University of Maine and David Waddington U.S. Bureau of the Census and the United States Fish and Wildlife Service. 1998. 1996 Net Economic Values for Bass, Trout, and Walleye Fishing, Deer, Elk, and Moose Hunting, and Wildlife Watching, Addendum to the 1996 National Survey of Fishing, Hunting and Wildlife-Associated Recreation. Orono, Maine.
- Caudill, James Ph.D. and Laughland, Andrew, Ph.D., U.S. Fish and Wildlife Service. 1998. 1996 National and State Economic Impacts of Wildlife Watching, Based on the 1996 National Survey of Fishing, Hunting, and Wildlife-Associated Recreation. Arlington, Virginia.
- Caughey, Bruce and Dean Winstanley. 2001. The Colorado Guide. Fulcrum Publishing, Golden, Colorado.
- Center for Business and Economic Forecasting, Inc., prepared for the Demography Section of Colorado Dept. of Local Affairs. 2001. Tourism-Related Government Jobs, Estimating Tourism Sales and Expenditures. Denver, Colorado.
- Center for Business & Economic Forecasting, Inc. prepared for the Demography Section of Colorado Dept. of Local Affairs. 2001. Tourism Jobs Gain Ground in Colorado: 1999 Estimates of State and County Tourism Jobs. Denver, Colorado
- Ciruli and Associates. 1996. Colorado Outdoors 2000: Statewide Survey of Investment in Colorado Conservation and Outdoor Recreation. Denver, Colorado.
- Ciruli and Associates. 2002. Growth and Open Space Top Issues: Drought and Water Shortage Increases Concern About Growth. Denver, Colorado.
- Colorado Department of Transportation. 1997. 1997 Mobility Survey. Denver, Colorado.
- Colorado Division of Forest, prepared for the Colorado Forest Advisory Board. 2002. 2002 Report on the Health of Colorado's Forests. Denver, Colorado.
- Colorado Division of Wildlife. 2002. Colorado Division of Wildlife Strategic Plan. Denver, Colorado.
- Colorado Division of Wildlife. 2002. Colorado Waterfowl Stamp Program 1990-2001. Denver, Colorado.
- Colorado Division of Wildlife. 2002. Colorado's Waterfowl Stamp Program 1990-2001: Protecting Colorado's Waterfowl Habitat. Denver, Colorado.
- Colorado State Parks. 2003. Local Government Survey Report. Denver, Colorado.
- Colorado State Parks. 2000. Horizons 1998-2003. Denver, Colorado.
- Colorado State Parks, University of Colorado, Center for Public-Private Sector Cooperation, and Hellmund Associates. 2000. On Nature's Trail - A Guide to the Future of Colorado's Statewide Trails System. Denver, Colorado.
- Cordell, Ken H. and Christine Overdevest. 2001. Footprints on the Land: An Assessment of Demographic Trends and the Future of Natural Resources in the United States. Sagamore Publishing, Champaign, Illinois.
- Cordell, Ken H., et al. 1999. Outdoor Recreation in American Life: A National Assessment of Demand and Supply Trends. Sagamore Publishing, Champaign, Illinois.
- Dean Runyon Associates, prepared for the Colorado Tourism
- Office. 2001. The Economic Impact of Travel on Colorado. Portland, Oregon.
- Duda, Mark and Kira C.Young. 1994. Americans and Wildlife Diversity - Public Opinion, Attitudes, Interest and Participation in Wildlife Viewing and Wildlife Diversity Programs. Harrisonburg, Virginia.
- Elling, Jennifer, and David Puckett, Colorado State Parks and Tom Obremski, Ph.D University of Denver. 1999. 1998 Visitation Study Final Report. Denver, Colorado.
- Fulton, David C. and Michael J. Manfredo, Colorado State University. 1997. Review of Trends in Hunting Participation. Colorado State University, Ft. Collins, Colorado.
- Garner, Elizabeth and Jerry Eckert, Colorado State University Cooperative Extension. 2002. Cost of Living Differentials in Colorado. Colorado State University, Ft. Collins, Colorado.
- Governor's Commission on Saving Open Spaces, Farms and Ranches. 2000. Natural Landscapes: Colorado's Legacy to its Children. Denver, Colorado.
- Green, Gary, University of Georgia and Ken. Cordell, U.S. Forest Service and Becky Stevens, University of Tennessee.

2003. Trends and the Significance of Demographic Shifts (PowerPoint Presentation). Athens, Georgia.

Hart, Julie and et al. from the Economic Impact Task Force. 2002. Economic Impact Task Force Report on the Impact of Drought. Denver, Colorado.

Hazen and Sawyer, prepared for Colorado Off-Highway Vehicle Coalition. 2001. Economic Contribution of Off-Highway Vehicle Use in Colorado. Colorado.

Headwaters Consulting, LLC prepared for Volunteers for Outdoor Colorado. 2002. The Blueprint for Outdoor Stewardship - Key Findings from Research. Denver, Colorado.

Inside Outside, Inc. and Advanced Resource Management, Inc. prepared for Colorado State Parks. 2000. Watchable Wildlife in Parks Report - Recommendations for 5-year Planning. Denver, Colorado.

The Interagency National Survey Consortium, Coordinated by the U.S. Forest Service, Recreation, Wilderness, and Demographics Trends Research Group. 2002. National Survey on Recreation and the Environment (NSRE): 2000-2002. Athens, GA and the Human Dimensions Research Laboratory, University of Tennessee, Knoxville, TN.

Johnson Communications, prepared for Colorado River Outfitters Association. 2002. 2001 Economic Impact Report. Lafayette, Colorado.

Johnson Communications, prepared for Colorado River Outfitters Association. 2002. Media Backgrounder. Lafayette, Colorado.

Knox, Robin, Colorado Division of Wildlife. 2002. Trend Analysis of Trout Fishing in Colorado, Assessment of Changes Described in Recent Angler Surveys. Denver, Colorado.

Longwoods International, prepared for the Colorado Tourism Office. 2003. Colorado Visitor Study Final Report. Denver, Colorado.

Longwoods International, prepared for the Colorado Tourism Office. 2001. Colorado Visitor Study 2001. Denver, Colorado.

Office of Economic Development and International Trade. 2001. Report to the Governor on the State of the Colorado Tourism Industry. Denver, Colorado.

Office of the Surgeon General. 2003. The Surgeon General's Call to Action to Prevent and Decrease Overweight and Obesity. Washington D.C.

Outdoor Industry Association. 2002. State of the Industry Report. Boulder, Colorado.

Peale, M., Colorado Natural Areas Program, Colorado State Parks, Colorado Department of Natural Resources. 2001. Best Management Practices for Wetlands within Colorado State Parks. Denver, Colorado.

PriceWaterhouseCoopers LLP, prepared for Colorado State Parks. 2002. Colorado State Parks Market Assessment Study. Boston, Massachusetts.

Public Opinion Strategies prepared for Great Outdoors Colorado. 2001. Great Outdoors Colorado Trust Fund, Colorado Statewide Survey of 600 Adults. Denver, Colorado.

Pullis, Genevieve, U.S. Fish and Wildlife Service. 1999. Participation and Expenditure Patterns of African-American, Hispanic, and Women Hunters and Anglers, Addendum to the 1996 National Survey of Fishing, Hunting and Wildlife-Associated Recreation. Washington D.C.

Riebsame, William and James Robb, et al. 1997. The New West: Portrait of a Changing Region. W.W. Norton & Company, NY, NY.

State Board of Land Commissioners. 2002. Colorado State Land Board, Investing in Our Natural Resources; Ensuring Our Future Annual Report 2002. Denver, Colorado.

U.S. Department of Commerce, Bureau of the Census, Census 2000 Summary Files 1-4. Washington D.C.

U.S. Department of the Interior, Fish and Wildlife Service and U.S. Department of Commerce, Bureau of the Census. 1998. 1996 National Survey of Fishing, Hunting, and Wildlife-Associated Recreation. Washington D.C.

U.S. Department of the Interior, Fish and Wildlife Service and U.S. Department of Commerce, Bureau of the Census. 2000. 1996 National Survey of Fishing, Hunting, and Wildlife-Associated Recreation: Colorado. Washington D.C.

U.S. Department of the Interior, Fish and Wildlife Service and U.S. Dept. of Commerce, Bureau of the Census. 2002. 2001 National Survey of Fishing, Hunting, and Wildlife-Associated Recreation - State Overview of Preliminary Findings. Washington D.C.

U.S. Department of the Interior, National Park Service, Public Use Statistics Office. 2000. National Park Service Statistical Abstract 2002. Denver, Colorado.

U.S. Department of the Interior, National Park Service. 2000. Strategic Plan FY 2000 – 2005. Washington D.C.

U.S. Department of the Interior, National Park Service. 2001. A Summary of the Visitor Experience and Resource Protection (VERP) Framework. Washington D.C.

U.S. Department of Agriculture, U.S. Forest Service. 1999. ROS Users Guide. Washington D.C.

University of Colorado, Denver prepared for Colorado Department of Transportation. Bicycling and Walking in Colorado: Economic Impact and Household Survey Results. Denver, Colorado.

Vaske, Jerry et al. Colorado State University and Colorado Division of Wildlife. 2001. Wildlife Viewing in Colorado: A Review and Synthesis of Existing Data. Ft. Collins, Colorado.

Walt Klein and Associates, Inc. prepared for Great Outdoors Colorado. 2001. Great Outdoors Colorado: A Presentation of Key Findings. Denver, Colorado.

Young, Connie. January/February 2001. “Big Bucks, The Economics of Wildlife,” Colorado Outdoors. Denver, Colorado.

Additional Information was provided by the agencies and organizations represented on the SCORP Steering Committee, along with the following people:

– Lind Venturoni, Northwest Colorado Council of Governments, April 2003.

– Kathy Palmeri, The Colorado Campground and Lodge Owners Association (CCLOA), April 2003.

– Cindy DeGroen, Colorado Department of Local Affairs, Demography Section, April 2003.



Colorado State Parks

1313 Sherman Street, #618

Denver, CO 80203

303.866.3437

www.parks.state.co.us