

# Amendment No. 1

## Final Limited Phase I Environmental Site Assessment Report

### Rail Relocation for Colorado Communities



**Prepared For:**

**PB Americas, Inc.**  
555 17th Street,  
Suite 500  
Denver, CO 80202

**Colorado Department of Transportation**  
Division of Transportation Development  
4201 East Arkansas Avenue  
Denver, CO 80222

**Prepared by:**

**RMC Consultants, Inc.**  
12345 W. Alameda Parkway,  
Suite 205  
Lakewood, CO 80228  
303-980-4101

**October 2008**

**Amendment No. 1**

**RAIL RELOCATION FOR COLORADO COMMUNITIES**

**(R2C2)**

**Limited Phase 1 Environmental Site Assessment**

**for**

**Preliminary Bypass Alignments A and B**

*Prepared for:*

**PB Americas  
555 17<sup>th</sup> Street, Suite 500  
Denver, CO 80202**

**And**

**Colorado Department of Transportation  
Division of Transportation Development  
4201 East Arkansas Avenue  
Denver, CO 80222**

*Prepared by:*

**RMC Consultants, Inc.  
12345 West Alameda Parkway  
Suite 205  
Lakewood, Colorado 80228**

**October 2008**

**TABLE OF CONTENTS**

**1.0 INTRODUCTION..... 1**

**2.0 DATABASE SEARCH ..... 3**

2.1 USEPA CERCLIS DATABASE..... 3

2.2 CDPHE HMWM DATABASE..... 3

2.3 COLORADO OPS COSTIS DATABASE..... 4

2.4 COLORADO DIVISION OF WATER RESOURCES WELL  
PERMIT DATABASE ..... 4

2.5 COLORADO OIL & GAS DATABASE ..... 4

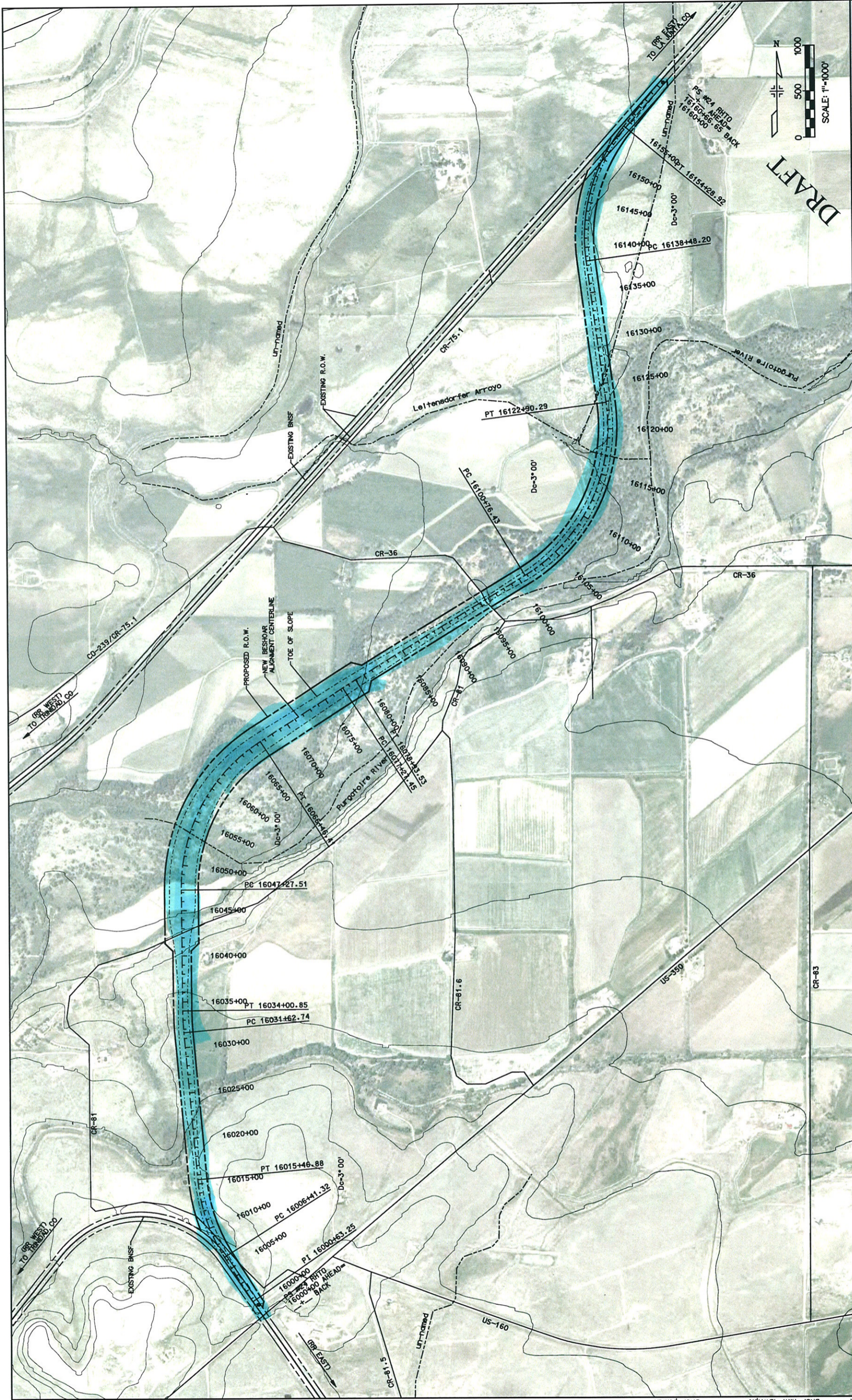
**3.0 REFERENCES..... 5**

## **1.0 INTRODUCTION**

Rail Relocation for Colorado Communities (R2C2) Beshoar Junction was assessed with regard to the presence of regulated environmental features including hazardous waste (HW) sites, solid waste sites, Resource Conservation and Recovery Act (RCRA) sites, petroleum storage sites, water wells, oil wells, and gas wells located within a distance of approximately one mile to either side of the alignment. Federal and State databases available online were utilized to identify such sites, as described in Section 2 below. The search results for hazardous and solid waste sites, RCRA sites, and petroleum storage sites have been assessed with regard to their proximity to the proposed bypass alignments according to industry-standard search-distance criteria for each type of record, as described in ASTM standard E1527-05. All research pertained to sites in close proximity to Beshore Junction, Colorado. Figure 1 depicts the location and alignment.

INSERT FIGURE 1 - MAP





Project No./Code

**BESHOAR JUNCTION**

Designer: \_\_\_\_\_  
 Detailer: \_\_\_\_\_  
 Sheet Subsets: \_\_\_\_\_ of \_\_\_\_\_  
 Structure Numbers \_\_\_\_\_  
 Subset Sheets: \_\_\_\_\_ of \_\_\_\_\_

**As Constructed**

No Revisions: \_\_\_\_\_  
 Revised: \_\_\_\_\_  
 Void: \_\_\_\_\_

FELSBURG  
HOLT &  
ULLEVIG

**Index of Revisions**

Revision Number	Description
0000	
0001	
0002	
0003	
0004	

**Computer File Information**

Creation Date: \_\_\_\_\_ Name: \_\_\_\_\_  
 Last Modification Date: 9/17/2008 Initials: Marie  
 Full Path: \_\_\_\_\_ Project Drive Location  
 Drawing File Name: \_\_\_\_\_ Name: \_\_\_\_\_ Units: ENGLISH  
 Microstation Ver.: V8 Scale: \_\_\_\_\_

DRAFT



## **2.0 DATABASE SEARCH**

Various databases are available online that enable retrieval of area-specific data to evaluate the presence or absence of sites related to handling, storage, disposal, and/or generation of hazardous waste, solid waste, or petroleum, or contamination of the environment by these substances. Data regarding other environmental receptors, such as water wells, was also obtained. Additionally, the presence of energy-related natural resource development in the form of oil and gas well locations, and the characteristics of these wells (if needed) was researched online.

### **2.1 USEPA CERCLIS DATABASE**

The United States Environmental Protection Agency (USEPA) maintains a database of potential hazardous substance release sites, called the Comprehensive Environmental Response, Compensation, and Liability Information System (CERCLIS). The USEPA online CERCLIS database (USEPA, 2008) was accessed September 25, 2008. Copies of pertinent records retrieved are attached.

Results from the database search indicate that there are no CERCLA facilities in the immediate vicinity of Beshoar Junction. Preliminary data review indicates that adverse impacts would not be incurred from the proposed Beshoar Junction alignment.

### **2.2 CDPHE HMWM DATABASE**

The Colorado Department of Public Health and Environment (CDPHE) Hazardous Materials and Waste Management Division (HMWM) maintains a database of sites it either regulates or which have undergone remediation, including Superfund sites, RCRA Small Quantity Generator (SQG) and Large Quantity Generator (LQG) sites, landfills, hazardous waste corrective action sites, treatment storage and disposal (TSD) sites, and sites with environmental covenants. The database (CDPHE, 2008) was searched based on 10-mile radius buffer around a center-point selected within the general project area. A radius map plot and search results are attached.

No Colorado HMWM sites were identified adjacent to or near Beshoar Junction. The closest facility identified is a Hoehne School District site that is listed as a SQG. The Hoehne School District site is located approximately 2 to 3 mile north of the junction. Preliminary review of data suggests that adverse impacts would not be incurred from the proposed Beshoar Junction alignment.

### **2.3 COLORADO OPS COSTIS DATABASE**

The Colorado Division of Oil and Public Safety (OPS) online database of registered petroleum storage tank sites, the Colorado Storage Tank Information System (COSTIS) was searched to identify facilities within the ASTM standard ½ mile buffer distance. The database (CDLE, 2008) was searched by ZIP Code. The search results are summarized in tabular form and are attached.

The ZIP Code 81082 covers the portion of Las Animas County for Beshoar Junction. Eighty-three records were identified for Las Animas County. All records appear to be in relative close proximity to Trinidad, Colorado. There do not appear to any UST or AST sites in the vicinity of Beshoar Junction. Preliminary review of data suggests that adverse impacts would not be incurred from the proposed Beshoar Junction alignment.

### **2.4 COLORADO DIVISION OF WATER RESOURCES WELL PERMIT DATABASE**

The Colorado Division of Water Resources (DWR) maintains a database of existing water well permits issued by the State Engineer's Office. The database (CDWR, 2008) is accessible online (<http://water.state.co.us/pubs/datasearch.asp>), and shows the locations associated with well permits in a map format. Individual well data is also available. The water well database search was performed on September 25, 2008. The search focused on identifying the areal distribution of water wells in the area around Beshoar Junction. A well permit location plot is attached.

As observed from the well permit plot, a moderate density of wells is present in the vicinity of Beshoar Junction. However, data suggests that adverse impacts would not be incurred from the proposed Beshoar Junction alignment on water resources and water wells.

### **2.5 COLORADO OIL & GAS DATABASE**

The Colorado Oil and Gas Conservation Commission (COGCC) maintains a database (COGCC, 2008) of oil and gas well permits. The permit locations may be viewed in map format (<http://oil-gas.state.co.us/infosys/Maps/gismain.cfm>) based on a user-defined area of interest.

As observed from inspection of the oil and gas well permit plot (attached), there are relatively few wells located in the area of Beshoar Junction. Most of the oil and gas permits occur west of Trinidad. Therefore, data suggests that adverse impacts would not be incurred from the proposed Beshoar Junction alignment.



### **3.0 REFERENCES**

- CDLE, 2008. Colorado Storage Tank Information System (COSTIS) Online Database. URL: <http://costis.cdle.state.co.us/home.asp>. Colorado Department of Labor and Employment Division of Oil and Public Safety, Denver, Colorado. Accessed July 22, 2008
- CDPHE, 2008. Hazardous Materials and Waste Management Division Site Locator Mapping Application. URL: <http://www.cdphe.state.co.us/hm/HMSiteCover.htm>. Colorado Department of Public Health and Environment, Denver, Colorado. Accessed July 22, 2008.
- CDWR, 2008. Online Mapping Well Permit Locator. URL: <http://water.state.co.us/pubs/datasearch.asp>. Colorado Division of Water Resources, Denver, Colorado. Accessed July 23, 2008.
- COGCC, 2008. COGCC GIS Online. URL: <http://oil-gas.state.co.us/infosys/Maps/gismain.cfm>. Colorado Oil and Gas Conservation Commission, Denver, Colorado. Accessed July 23, 2008.
- U.S. EPA, 2007. Superfund Cleanup Process website. URL: <http://www.epa.gov/superfund/cleanup/index.htm>. United States Environmental Protection Agency. Washington, D.C. Accessed July 21, 2008.
- U.S. EPA, 2008. CERCLIS Online Searchable Database. URL: [http://www.epa.gov/enviro/html/cerclis/cerclis\\_query.html](http://www.epa.gov/enviro/html/cerclis/cerclis_query.html). United States Environmental Protection Agency. Washington, D.C. Accessed July 21, 2008.

## **ATTACHMENTS**





# Superfund (CERCLIS)

http://www.epa.gov/epaosopr/epaosopr/program\_search=1&report=2&page\_no=1&output\_format=html&switch=TRUE&database\_type=CERCLIS  
Last updated on Thursday, September 25th, 2008

You are here: [EPA Home](#) [Envirofacts](#) [CERCLIS](#) [Query Results](#)



## Query Results



**Consolidated facility information (from multiple EPA systems)  
was searched to select facilities**

**County Name:** Las Animas  
**State Abbreviation:** CO  
**EPA Region Code:** 08

Results are based on data extracted on APR-11-2008

**Below is additional information for CERCLIS sites:**

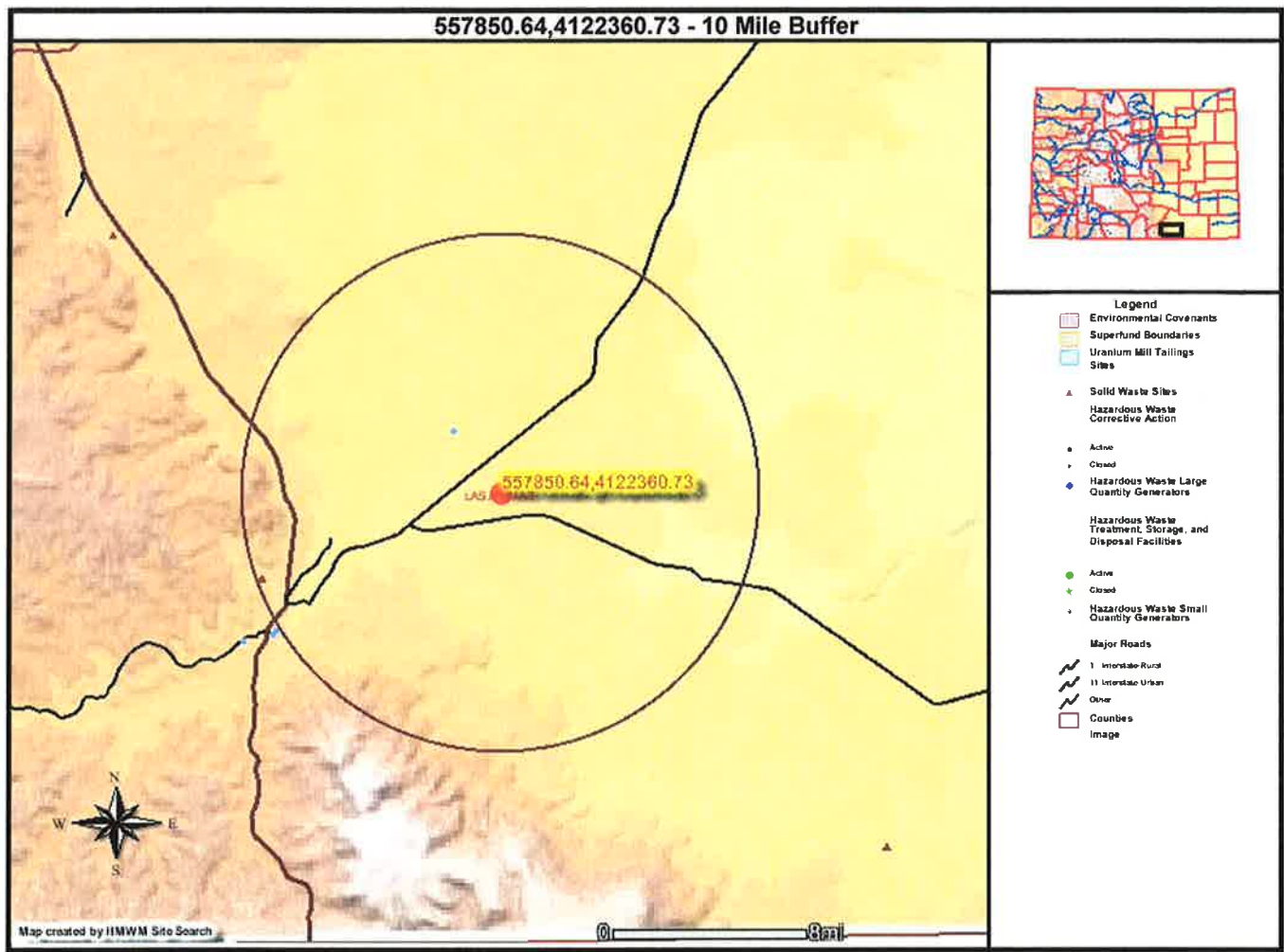
*This information resource is not maintained, managed, or owned by the Environmental Protection Agency (EPA) or the Envirofacts Support Team. Neither the EPA nor the Envirofacts Support Team is responsible for their content or site operation. The Envirofacts Warehouse provides this reference only as a convenience to our Internet users.*

- National Library of Medicine (NLM)  [TOXMAP](#)

---

**Total Number of Facilities Displayed: 0**

---



**Solid Waste Sites**

Rec	ID	FACILITY	STREET_ADD	CITY	ZIP_4	GEN_TYPE	METHOD	ACCURACY	#SHAPE#	#ID#
1	071-LFL-030	TRINIDAD LANDFILL	COUNTY ROAD 69 1/2 MILE NW OF CITY	TRINIDAD		LANDFILL	GPS 1999	+ OR - 30 METERS	[polygon]	190

**Hazardous Waste Small Quantity Generators**

Rec	ID	FACILITY	STREET_ADD	CITY	COUNTY	ZIP_4	FAC_TYPE	STATUS	LINKS	METHOD	ACCURACY	#SHAPE#	#ID#
1	COD022414759	HOEHNE RE SCHOOL DIST	EL MORO RD	HOEHNE	LAS ANIMAS	81046	SQG	A	<a href="http://www.epa.gov/cgi-bin/get1cReport.cgi?tool=echo&amp;IDNumber=COD022414759">http://www.epa.gov/cgi-bin/get1cReport.cgi?tool=echo&amp;IDNumber=COD022414759</a>	MANUAL	UNABLE TO CONFIRM EXISTENCE OR LOCATION	[polygon]	144



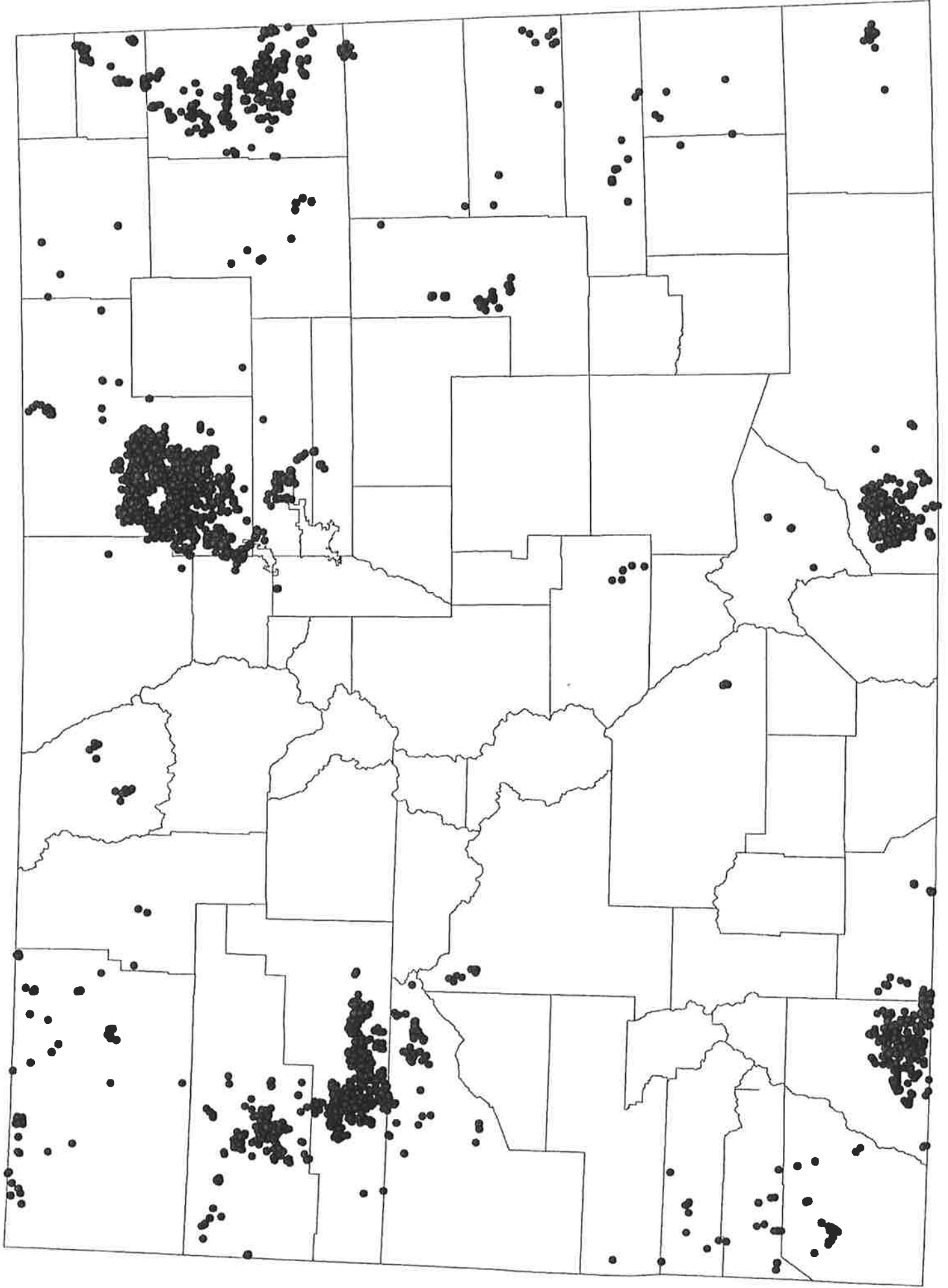
Potential UST's / AST's Near Breshoar Junction

facilityid	facilityname	Address1	ownemame	ownerid	county
10619	ALAN CASTILLO EXCAVATING	1011 LANE ST TRINIDAD 81082	CASTILLO; ALAN		10635 LAS ANIMAS
2908	CSP - TRINIDAD #49241	10201 S CR 69.3 TRINIDAD 81082	COLORADO STATE PATROL;		1459 LAS ANIMAS
3035	ALS GAS SERVICE INC	1144 ROBINSON TRINIDAD 81082	ALS GAS SERVICE INC;		185 LAS ANIMAS
1206	CITY OF TRINIDAD HOT PLANT	12000 RD 26.2 TRINIDAD 81082	CITY OF TRINIDAD;		1189 LAS ANIMAS
10640	ULTIMATE WASH	130 ANIMAS TRINIDAD 81082	YELTRI; FRANK		562 LAS ANIMAS
10619	BOBS SERVICE	1414 SANTA FE TR TRINIDAD 81082	GONZALES; BOB		247 LAS ANIMAS
1494	GASAMAT #179	1519 E MAIN ST TRINIDAD 81082			2470 LAS ANIMAS
10766	MUSTANG #7237	1519 E MAIN TRINIDAD 81082			2470 LAS ANIMAS
203	TRINIDAD CENTER	1601 INDEPENDENCE RD TRINIDAD 81082	UNITED PARCEL SERVICE;		5480 LAS ANIMAS
11960	UNITED PARCEL SERVICE	1601 INDEPENDENCE TRINIDAD 81082	UNITED PARCEL SERVICE;		16159 LAS ANIMAS
1177	TRINIDAD MUNICIPAL POWER PLANT	1925 E MAIN ST TRINIDAD 81082	CITY OF TRINIDAD;		1189 LAS ANIMAS
17620	HOEHNE SCHOOL DIST	19851 CR 75.1 TRINIDAD 81082			19981 LAS ANIMAS
502	TRINIDAD RS #217 STATE HWY BLDG	2.5 MI S OF TRINIDAD TRINIDAD 81082			311 LAS ANIMAS
8174	AMATO BROTHERS INC	200 E MAIN ST TRINIDAD 81082			20588 LAS ANIMAS
5964	LAS ANIMAS COUNTY	2000 N LINDEN AVE TRINIDAD 81082			4222 LAS ANIMAS
8340	HILLTOP SHAMROCK SERVICE STATION	2000 SANTA FE DR TRINIDAD 81082	HADAD MOTOR SALES INC;		2670 LAS ANIMAS
15697	LORENCITO COAL CO	2050 HWY 12 TRINIDAD 81082			1951 LAS ANIMAS
16762	SUNISABLE SERVICES	2126 FREEDOM RD TRINIDAD 81082			19523 LAS ANIMAS
16241	BIG R STORE	2202 FREEDOM RD TRINIDAD 81082			19533 LAS ANIMAS
15017	MIRASTAR #62027	2208 FREEDOM ST TRINIDAD 81082			18416 LAS ANIMAS
16097	222 GRAY CREEK ROAD	222 GRAY CREEK RD TRINIDAD 81082			19211 LAS ANIMAS
3836	CITY GARAGE	223 N CHESTNUT ST TRINIDAD 81082	CITY OF TRINIDAD;		1189 LAS ANIMAS
641	AMATO BROTHERS	224 GODDING AVE TRINIDAD 81082			20588 LAS ANIMAS
11470	7-ELEVEN #23511	236 2ND ST TRINIDAD 81082			5230 LAS ANIMAS
4625	LAS ANIMAS CO SCHOOL DISTRICT 1	240 N CONVENT ST TRINIDAD 81082	LAS ANIMAS SCHOOL DIST 1;		3327 LAS ANIMAS
18169	BIG 4 COUNTRY STORE	24638 HWY 12 TRINIDAD 81082			20740 LAS ANIMAS
17645	WALMART #962	2612 TOUPAL DR TRINIDAD 81082			6111 LAS ANIMAS
18457	PIONEER NATURAL RESOURCES	27000 HWY 12 TRINIDAD 81082			21144 LAS ANIMAS
16105	DURAN OIL COMPANY	27520 CR 53.5 TRINIDAD 81082			1951 LAS ANIMAS
18148	ACORN PETROLEUM	2918 FREEDOM RD TRINIDAD 81082			20128 LAS ANIMAS
640	KONVENIENCE KORNER #1	305 STATE ST TRINIDAD 81082			3561 LAS ANIMAS
7349	WHISTLE STOP INC	313 NEVADA AVE TRINIDAD 81082			19468 LAS ANIMAS
10630	MARTY FEED INC	326 N COMMERCIAL TRINIDAD 81082			1951 LAS ANIMAS
17756	DURAN OIL CO	3700 E MAIN TRINIDAD 81082			19468 LAS ANIMAS
14404	FAA TRINIDAD ARSR-2	38280 CR 133.8 TRINIDAD 81082			2182 LAS ANIMAS
341	TEXACO SS	401 E MAIN & WALNUT ST TRINIDAD 81082	UNKNOWN;		9999 LAS ANIMAS
10160	GENE'S FRONTIER	404 UNIVERSITY TRINIDAD 81082			1951 LAS ANIMAS
7387	MOUNT SAN RAFAEL HOSPITAL	410 BENEDICTA AVE TRINIDAD 81082			5388 LAS ANIMAS
2240	LOAF N JUG STORE #6	411 UNIVERSITY TRINIDAD 81082			3561 LAS ANIMAS
6161	M & M DISTRIBUTING CO OF TRINIDA	422 N COMMERCIAL ST TRINIDAD 81082	M & M DISTRIBUTING CO;		3502 LAS ANIMAS
10911	DURAN OIL CO	426 N CHESTNUT ST TRINIDAD 81082			1951 LAS ANIMAS
9805	DURAN OIL CO HOEHNE	44014 LAS ANIMAS CR 67.1 TRINIDAD 81082			1951 LAS ANIMAS
15072	PERRY STOKES AIRPORT	44814 CR 38 TRINIDAD 81082			4222 LAS ANIMAS
11075	WOZNIAK OIL CO	500 ELM ST TRINIDAD 81082	UNKNOWN;		9999 LAS ANIMAS
11286	HADAD MOTOR SALES BULK PLANT	501 ELM ST TRINIDAD 81082			17702 LAS ANIMAS
11271	RANCH HEADQUARTERS	50679 LAS ANIMAS CR 32 TRINIDAD 81082	RIVER CANYON RANCH;		2913 LAS ANIMAS
5618	COMMERCIAL STANDARD	595 N COMMERCIAL ST TRINIDAD 81082			1255 LAS ANIMAS
14373	FORMER STUCKEYS GAS STATION	6 MI N OF TRINIDAD ON I-25 TRINIDAD 81082	BROWN; MARK		17758 LAS ANIMAS
10676	TRINIDAD ST JR COLLEGE	600 PROSPECT ST TRINIDAD 81082	TRINIDAD STATE JUNIOR COLLEGE		5389 LAS ANIMAS
18481	SAFeway	600 PURGATORIE DR TRINIDAD 81082			20958 LAS ANIMAS
922	J R S TRAVEL SHOP	639 W MAIN ST TRINIDAD 81082			1951 LAS ANIMAS
10643	J R TRAVEL SHOPPE	642 W MAIN TRINIDAD 81082			1951 LAS ANIMAS
913	PETRO MARK CORP	701 E ELM ST TRINIDAD 81082	STAR OIL CO INC;		7568 LAS ANIMAS
11200	PETRO MARK CORP	701 ELM TRINIDAD 81082	STAR OIL CO INC;		7568 LAS ANIMAS
7254	PETE CONNELL	705 E 7TH TRINIDAD 81082	CONNELL; PETE		5720 LAS ANIMAS
894	LEONES SERVICE CENTER	705 E MAIN ST TRINIDAD 81082	LEONE; ROBERT		4524 LAS ANIMAS
8337	J M TIRE CO	709 N COMMERCIAL TRINIDAD 81082			755 LAS ANIMAS
1862	BURLINGTON NORTHERN	720 LINDEN AVE TRINIDAD 81082			5458 LAS ANIMAS
11163	JRS FUEL STOP	731 E MAIN ST TRINIDAD 81082			1951 LAS ANIMAS
10650	EAST MAIN CONOCO	741 E MAIN TRINIDAD 81082			1951 LAS ANIMAS
10623	5 POINTS 66	763 N COMMERCIAL TRINIDAD 81082			1951 LAS ANIMAS
8935	BELLS TEXACO	766 N COMMERCIAL ST TRINIDAD 81082	BELL; EDWARD		2020 LAS ANIMAS
14200	JR'S STORE #814	806 E GODDARD AVE TRINIDAD 81082			1951 LAS ANIMAS
910	PETRO MARK CORP	806 E GODDARD AVE TRINIDAD 81082	PETRO MARK CORP;		2875 LAS ANIMAS
10647	COUNTRY CLUB CONOCO	902 JEFFERSON TRINIDAD 81082			1951 LAS ANIMAS
10914	TRINIDAD FUEL STOP	9950 SANTA FE TRAIL DR TRINIDAD 81082			1951 LAS ANIMAS
11193	FORT CARSON ARMY BASE - DECAM	BLDG #PCMS PINON CANYON TRINIDAD 81082			18814 LAS ANIMAS
2298	US ARMY CORPS OF ENGINEERS	BOX 71 TRINIDAD 81082	US ARMY CORPS OF ENGINEERS		5507 LAS ANIMAS
15457	FORMER AMATO BULK PLANT	BURLINGTON NORTHERN & SANTA FE TRINIDAD 81082			20588 LAS ANIMAS
16240	SAN ISABEL SERVICES	CR 32.4 EL MORO TRINIDAD 81082			19533 LAS ANIMAS
16763	SAN ISABEL SERVICES	CR 75 TRINIDAD 81082			19523 LAS ANIMAS
16488	ALS GAS	HWY 350 E TRINIDAD 81082	ALS GAS SERVICE INC;		185 LAS ANIMAS
6302	PEPSI-COLA BOTTLING GROUP	HWY 85 & 87 N TRINIDAD 81082			4134 LAS ANIMAS
1468	COMPRESSOR SYSTEMS INC	I-25 & 350 TRINIDAD 81082	BREWER OIL CO;		4749 LAS ANIMAS
11570	TEXACO	I-25 & MAIN & WATER ST TRINIDAD 81082	TEXACO REFINING & MARKETIN		7862 LAS ANIMAS
4772	ROAD RUNNER #250	I-25 EXIT 23 TRINIDAD 81082	BROWN; MARK		17942 LAS ANIMAS
9286	BNRR MAINTENANCE	I-25 GODDARD EXIT TRINIDAD 81082			1255 LAS ANIMAS
6160	CDOT TRINIDAD	I-25 MP 11.05 TRINIDAD 81082	CDOT;		1049 LAS ANIMAS
11673	UNITED PARCEL SERVICE	INDUSTRIAL PARK TRINIDAD 81082	UNITED PARCEL SERVICE;		5480 LAS ANIMAS
4490	HQ FT CARSON & 4TH INFANTRY DIV	PINON CANYON MANEUVER SITE TRINIDAD 81082			2830 LAS ANIMAS
6181	COKE SERVICE	RR 2 BOX 330 TRINIDAD 81082	COKE; FRANK		2357 LAS ANIMAS
10631	LUDLOW VALLEY	RURAL ROUTE 2 - BOX 81 TRINIDAD 81082			1951 LAS ANIMAS
7061	TRINIDAD RCLR	UNKNOWN TRINIDAD 81082	FAA - FMP - ATTN JAMES HARRIS		2249 LAS ANIMAS



Plot showing well density in the vicinity of Beshore Junction, Colorado.





Colorado Oil and Gas Permit Locations