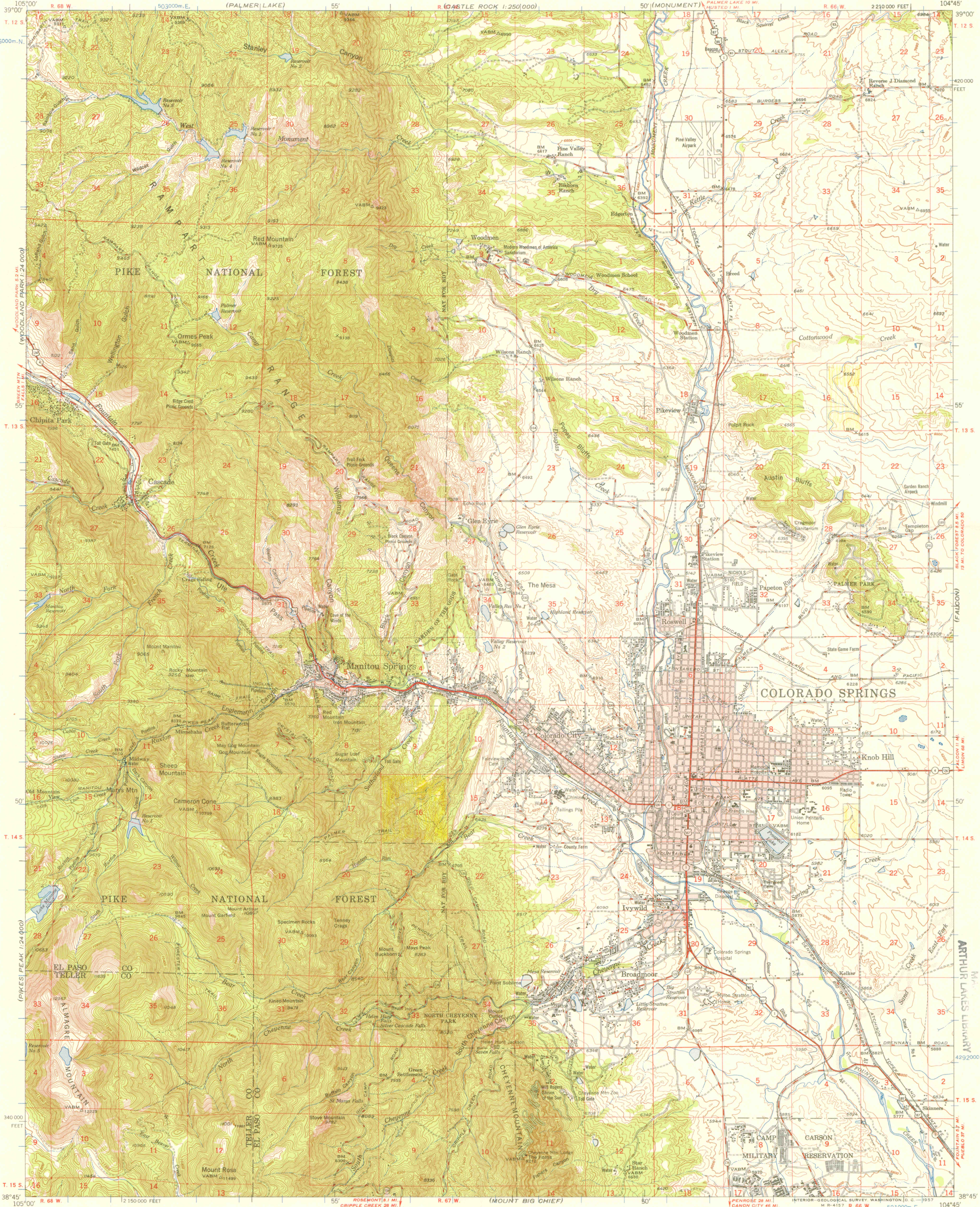
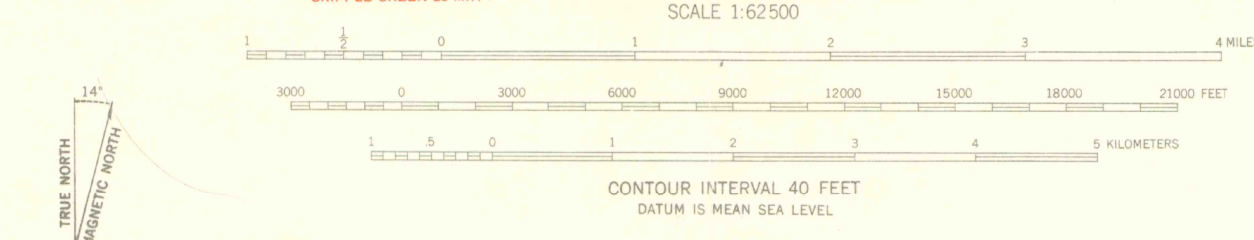


(MT. DECEPTION)

(ELBERT)



Mapped, edited, and published by the Geological Survey
Control by USC&GS and GS
Topography from aerial photographs by multiplex methods
Aerial photographs taken 1947. Field check 1948
Polyconic projection. 1927 North American datum
10,000-foot grid based on Colorado coordinate system,
central zone
Red tint indicates area in which only
landmark buildings are shown
1000-meter Universal Transverse Mercator grid ticks,
zone 13, shown in blue



ROAD CLASSIFICATION
HARD-SURFACE ALL WEATHER ROADS DRY WEATHER ROADS
Heavy-duty LANE LANE Improved dirt
Medium-duty LANE LANE Unimproved dirt
Loose surface, graded, or narrow hard-surface
U. S. Route State Route



COLORADO SPRINGS, COLO.
N3845-W10445/15

G
C222
s62
U5
1948
OFFICE COPY
LIBRARY USE ONLY