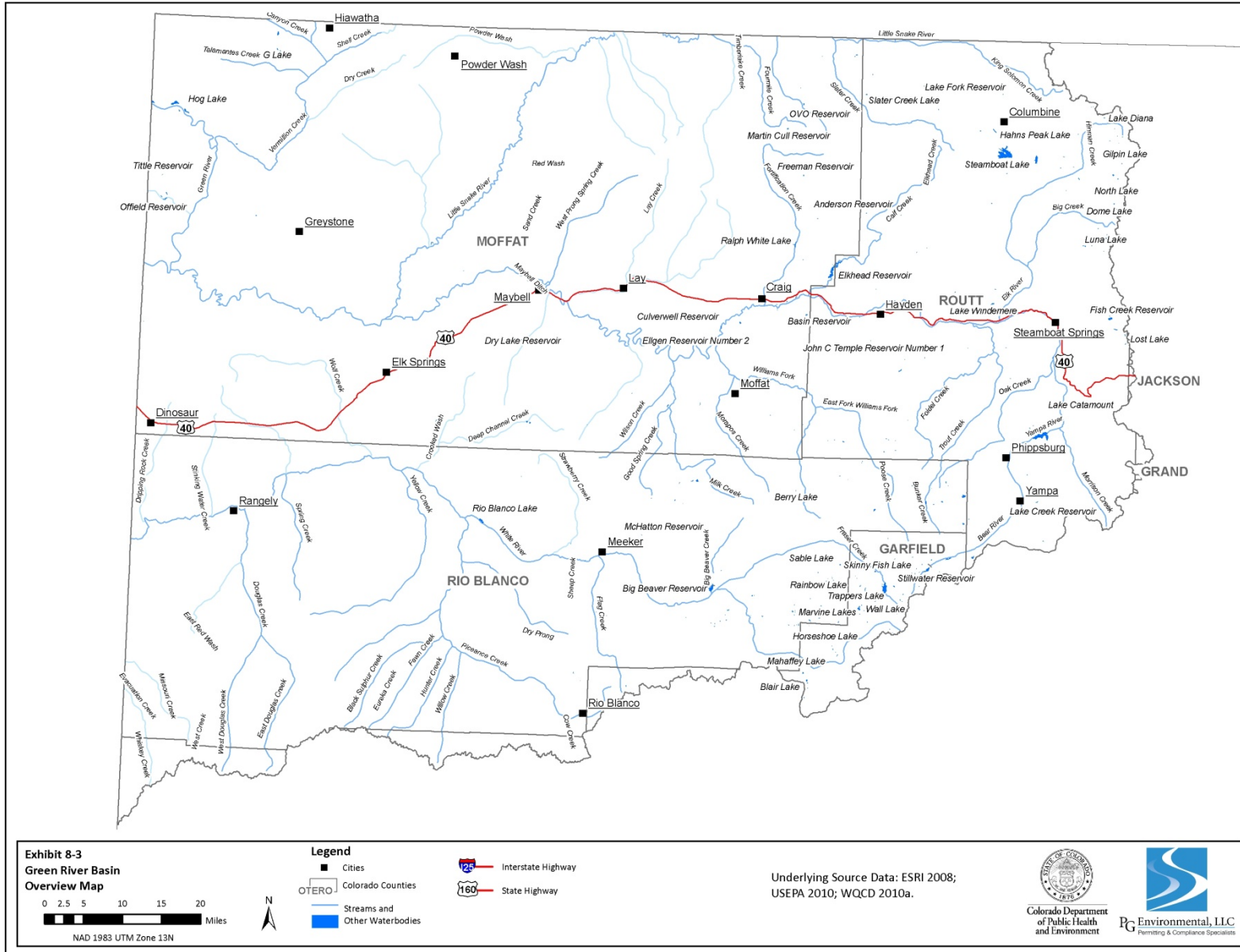


## **Green River Basin Plan End of Chapter Exhibits**

**Exhibit 8-1. in text**

**Exhibit 8-2. in text**

### Exhibit 8-3. Green River Basin and Major Tributaries



#### Exhibit 8-4. Green River Basin Level III Ecoregions

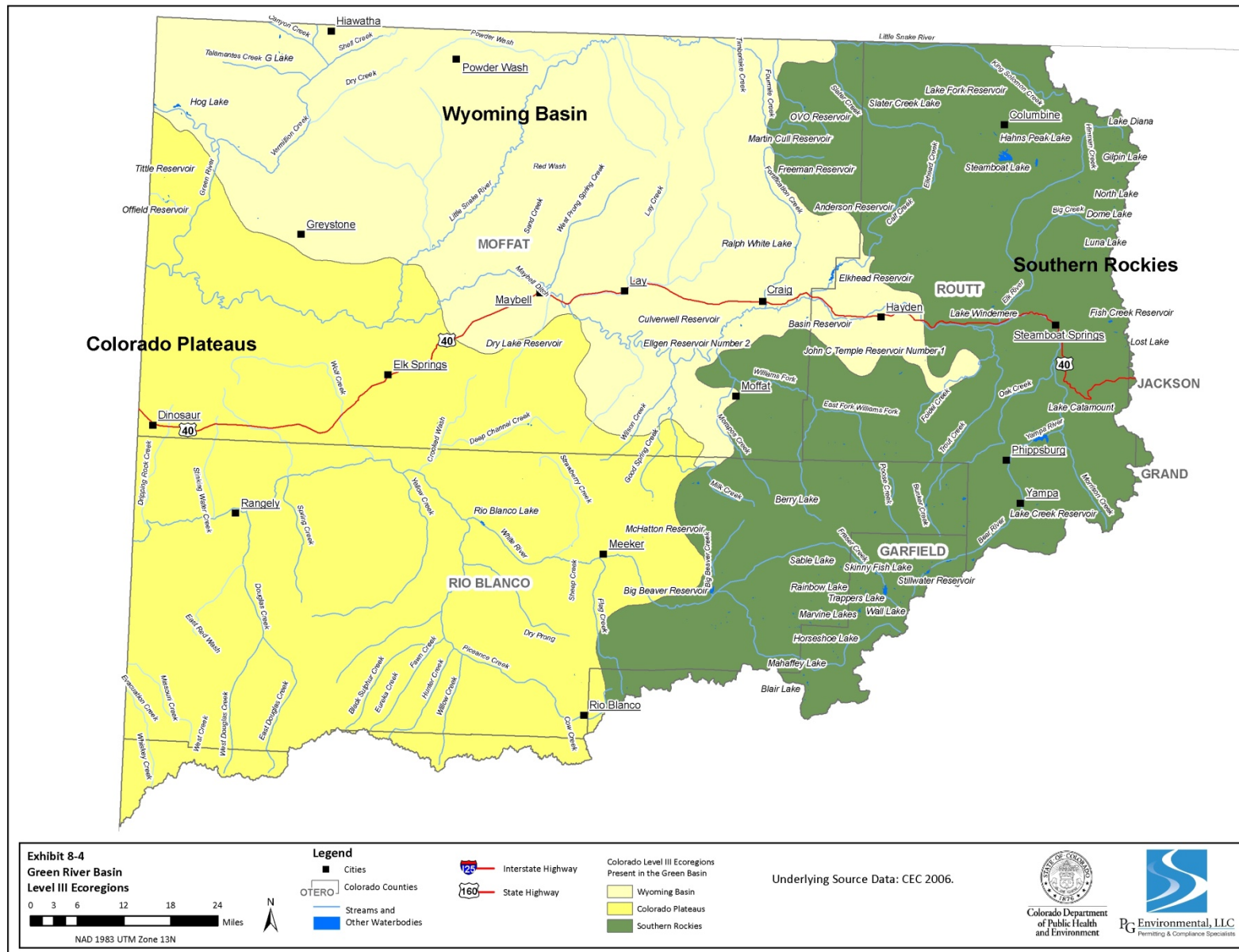


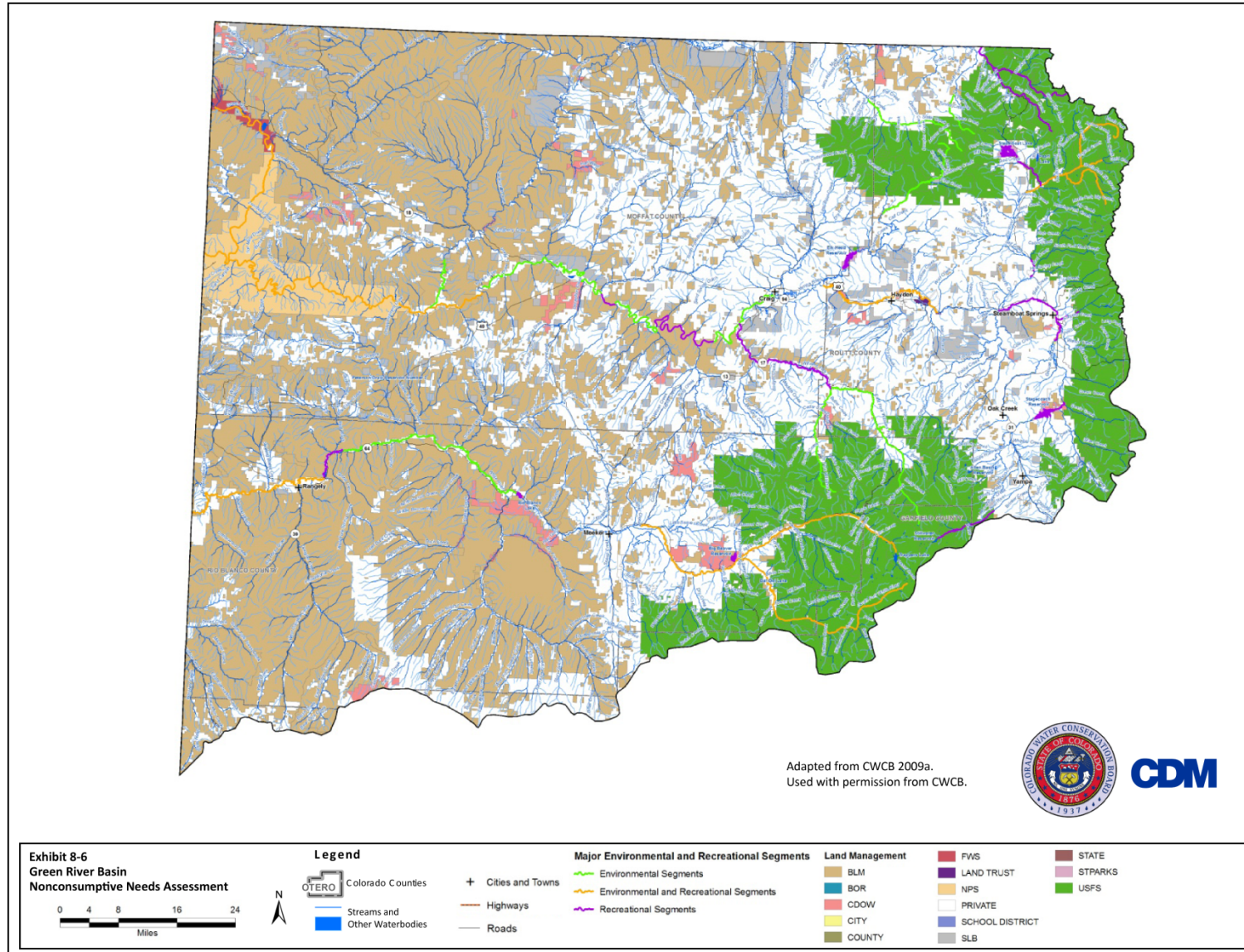


Exhibit 8-5. Green River Basin Endangered and Threatened Species

| Species  |  | Status                            |                                 |
|--|--|-----------------------------------|---------------------------------|
|  |  | Federal                           | State                           |
| <b>Endangered Species</b>  |  | <b>Federal</b>                    | <b>State</b>                    |
| Fish   | Colorado Pikeminnow ( <i>ptychocheilus lucius</i> )                  | √                                 | <i>On state threatened list</i> |
|  | Razorback Sucker ( <i>Xyrauchen texanus</i> )                        | √                                 | √                               |
|  | Bonytail Chub ( <i>Gila elegans</i> )                                | √                                 | √                               |
|  | Humpback Chub ( <i>Gila cypha</i> )                                  | √                                 | <i>On state threatened list</i> |
| Birds  | Whooping Crane ( <i>Grus Americana</i> )                             | √                                 | √                               |
|  | Southwestern Willow Flycatcher ( <i>empidonax traillii extimus</i> ) | √                                 | √                               |
| Mammals  | Black-footed Ferret ( <i>Mustela nigripes</i> )                      | √                                 | √                               |
|  | Lynx ( <i>Lynx Canadensis</i> )                                      | <i>On federal threatened list</i> | √                               |
|  | Wolverine ( <i>Gulo gulo</i> )                                       |                                   | √                               |
|  | Kit Fox ( <i>Vulpes macrotis</i> )                                   |                                   | √                               |
| <i>Total Endangered Species</i>                                    |  | 7                                 | 8                               |
| <b>Threatened Species</b>  |  | <b>Federal</b>                    | <b>State</b>                    |
| Fish   | Colorado Pikeminnow ( <i>ptychocheilus lucius</i> )                  | <i>On federal endangered list</i> | √                               |
|  | Humpback Chub ( <i>Gila cypha</i> )                                  | <i>On federal endangered list</i> | √                               |
| Birds  | Bald Eagle ( <i>Haliaeetus leucocephalus</i> )                       | √                                 | √                               |
|  | Burrowing Owl ( <i>Athene cunicularia</i> )                          |                                   | √                               |
| Mammals  | Lynx ( <i>Lynx Canadensis</i> )                                      | √                                 | <i>On state endangered list</i> |
| Plant  | Dudley Bluffs Bladderpod ( <i>Lesquerella congesta</i> )             | √                                 |                                 |
|  | Dudley Bluffs Twinpod ( <i>Physaria obcordata</i> )                  | √                                 |                                 |
|  | Uinta Basin Hookless Cactus ( <i>Sclerocactus glaucus</i> )          | √                                 |                                 |
|  | Ute Ladies'-tresses ( <i>spiranthes diluvialis</i> )                 | √                                 |                                 |
| <i>Total Threatened Species</i>                                    |  | 6                                 | 4                               |
| <b>State Species of Special Concern (not a statutory category)</b> |  | <b>Federal</b>                    | <b>State</b>                    |
| Fish   | Mountain Sucker ( <i>Catostomus platyrhynchus</i> )                  |                                   | √                               |
|  | Colorado Roundtail Chub ( <i>Gila pandora</i> )                      |                                   | √                               |
| Amph.  | Northern Leopard Frog ( <i>Rana pipiens</i> )                        |                                   | √                               |
| Reptiles   | Midget Faded Rattlesnake ( <i>Crotalus viridis concolor</i> )        |                                   | √                               |
|  | Longnose Leopard Lizard ( <i>Gambelia wislizenii</i> )               |                                   | √                               |
| Birds  | Greater Sandhill Crane ( <i>Crus Canadensis tabida</i> )             |                                   | √                               |
|  | American Peregrine Falcon ( <i>Falco peregrinus anatum</i> )         |                                   | √                               |
|  | Mountain Plover ( <i>Charadrius montanus</i> )                       |                                   | √                               |

| Species                                |  | Status  |       |
|--|--|---------|-------|
|  |  | Federal | State |
|  | Western Yellow-billed Cuckoo ( <i>Coccyzus americanus</i> )                      |         | ✓     |
|  | Ferruginous Hawk ( <i>Buteo regalis</i> )  |         | ✓     |
|  | Greater Sage Grouse ( <i>Centrocercus urophasianus</i> )                         |         | ✓     |
|  | Long-billed Curlew ( <i>Numenius americanus</i> )                                |         | ✓     |
|  | Columbian Sharp-tailed Grouse ( <i>Tympanuchus phasianellus columbianus</i> )    |         | ✓     |
| Mammals                                | Townsend's Big-eared Bat (pale ssp)( <i>Corynorhinus townsendii pallescens</i> ) |         | ✓     |
|  | Northern Pocket Gopher (macrotis ssp)( <i>Thomomys talpoides macrotis</i> )      |         | ✓     |
| Total State Species of Special Concern |  | NA      | 15    |
| Federal Candidate Species              |  | Federal | State |
| Plant                                  | Graham Beardtongue ( <i>Penstemon grahamii</i> )                                 | ✓       |       |
|  | White River Beardtongue ( <i>Penstemon scariosus albifluvis</i> )                | ✓       |       |
| Total Federal Candidate Species        |  | 2       | NA    |

Sources: CDOW 2010; CWCB 2004.

Exhibit 8-6. Green River Basin Nonconsumptive Needs Assessment<sup>1</sup>

<sup>1</sup> The nonconsumptive needs assessment map focuses on environmental and recreational areas for the following purposes: (1) to serve as a guide for water supply planning to avoid future conflicts over environmental and recreational needs; (2) to assist in identifying environmental and recreational water needs status; (3) to help basins plan for the water needs of species of special concern; and (4) to provide opportunity for collaborative efforts for future multi-objective projects. The CWCB Yampa/White Basin (which is the equivalent of the SWQMP Green River Basin) map was developed using a matrix that identified stream and lake reaches with environmental and recreational data. The focus areas are color coded on the map. Additional information on the environmental and recreational areas included in the CWCB Yampa/White map can be found in Appendix D of CWCB 2009a.

Exhibit 8-7. Green River Basin Precipitation

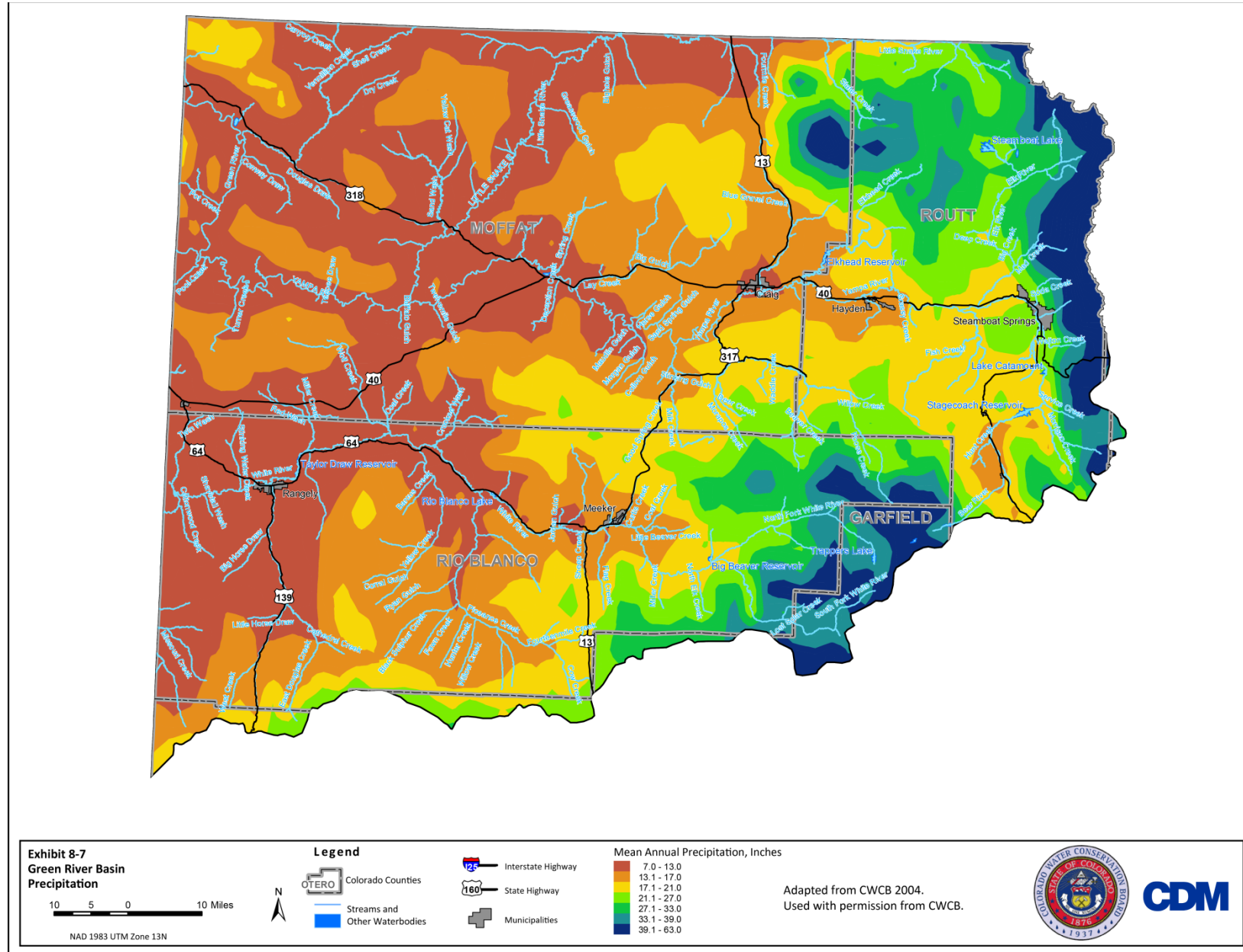




Exhibit 8-8. Green River Basin Land Ownership

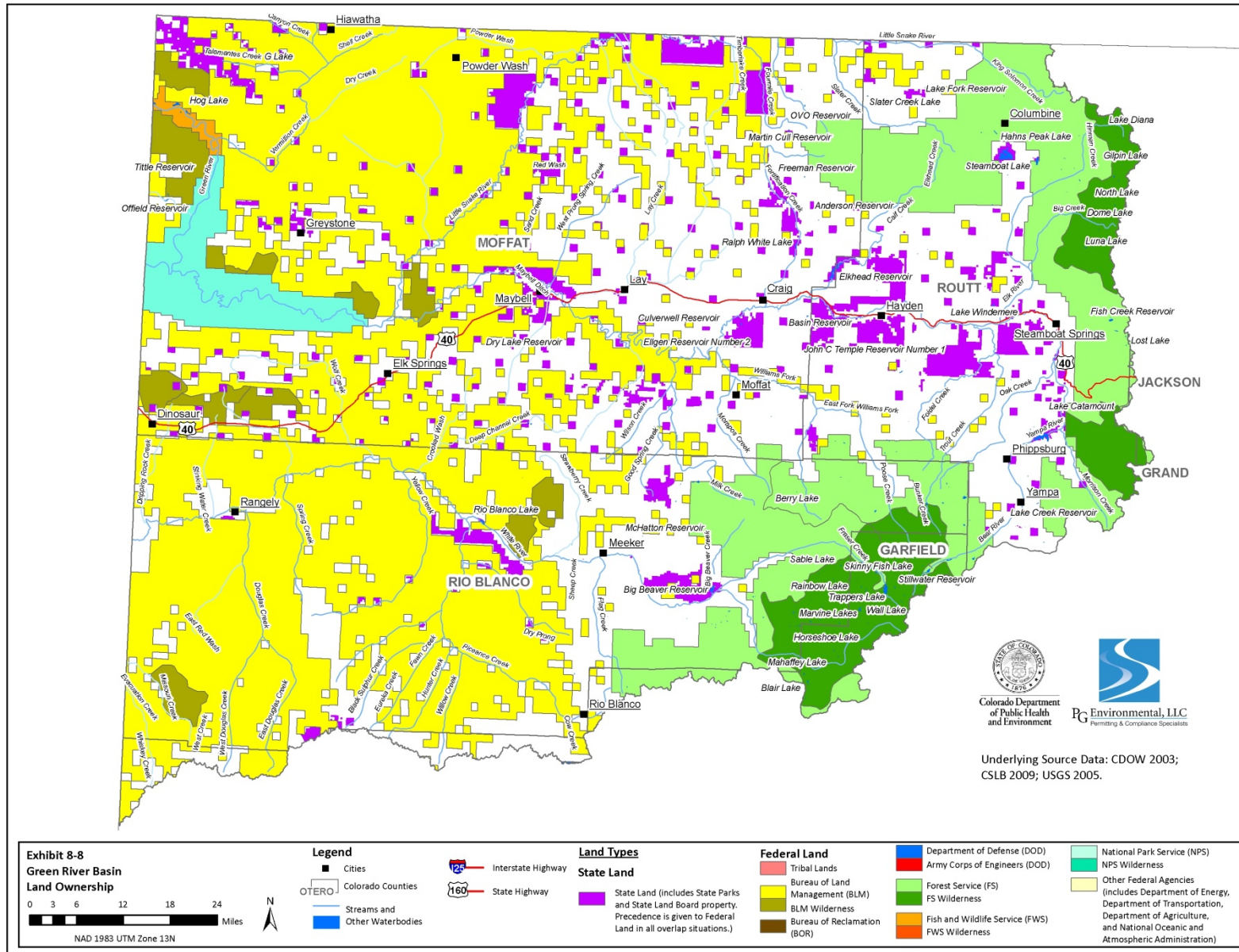
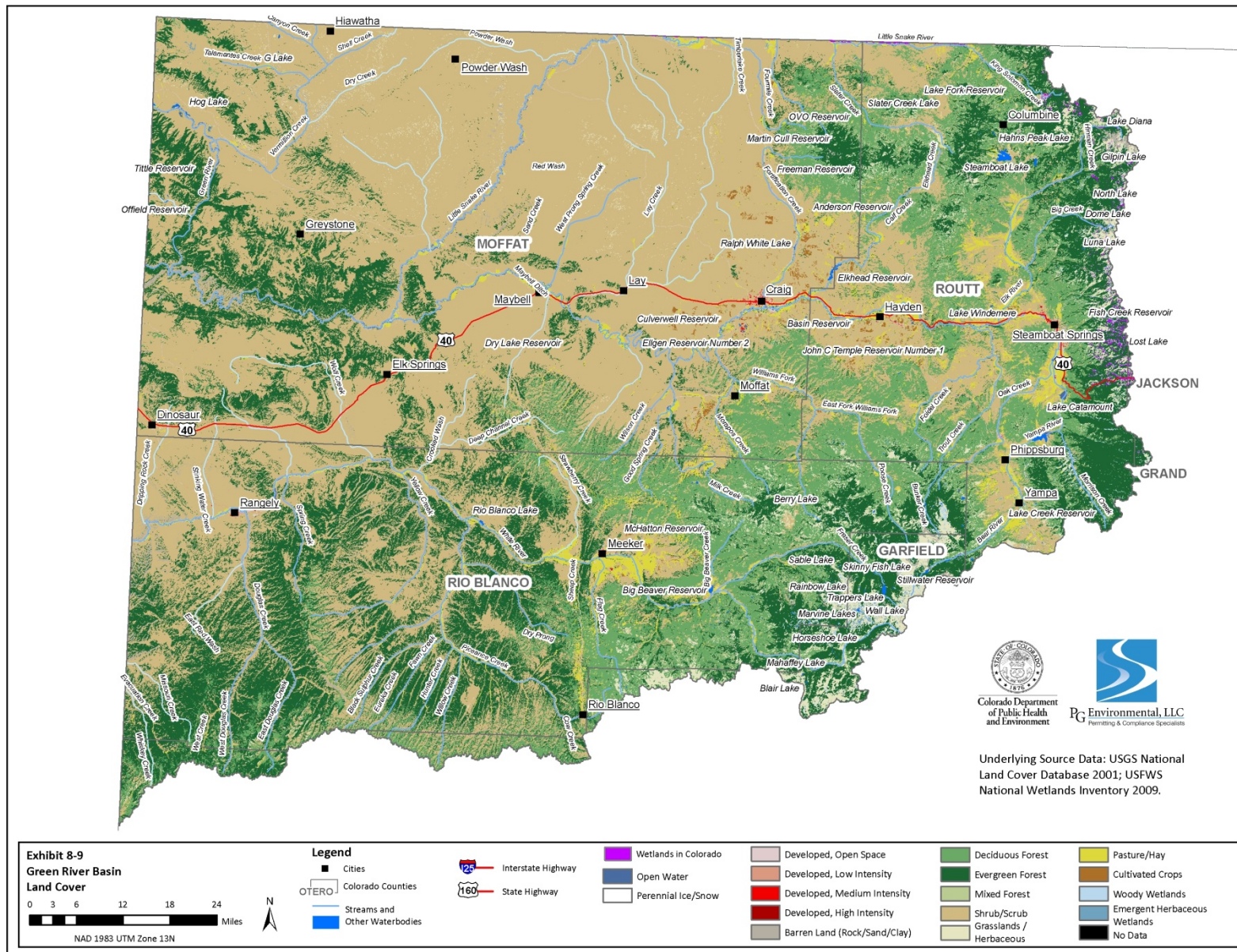




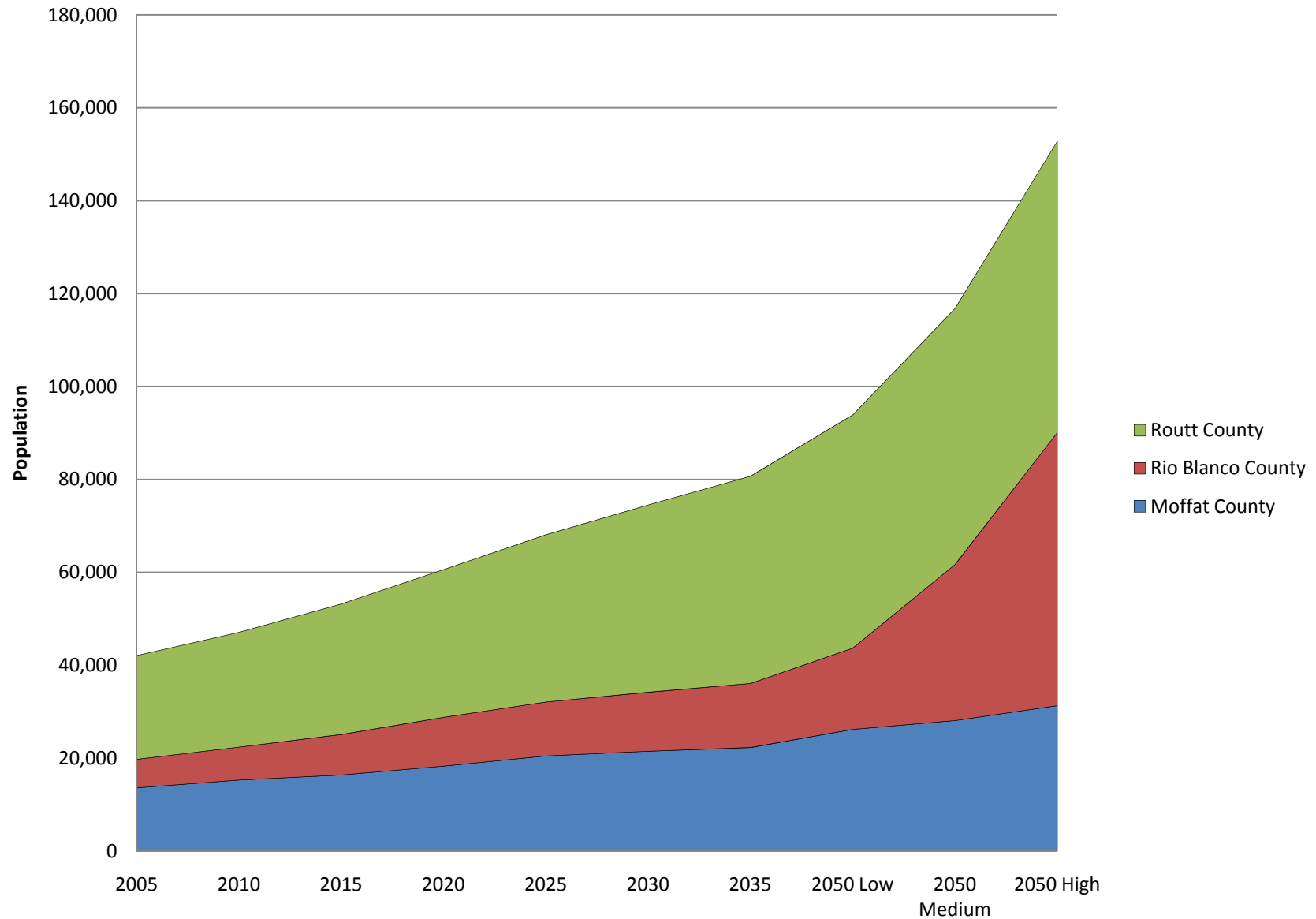
Exhibit 8-9. Green River Basin Land Cover



**Exhibit 8-10. in text**



Exhibit 8-11. Green River Basin Population Projections



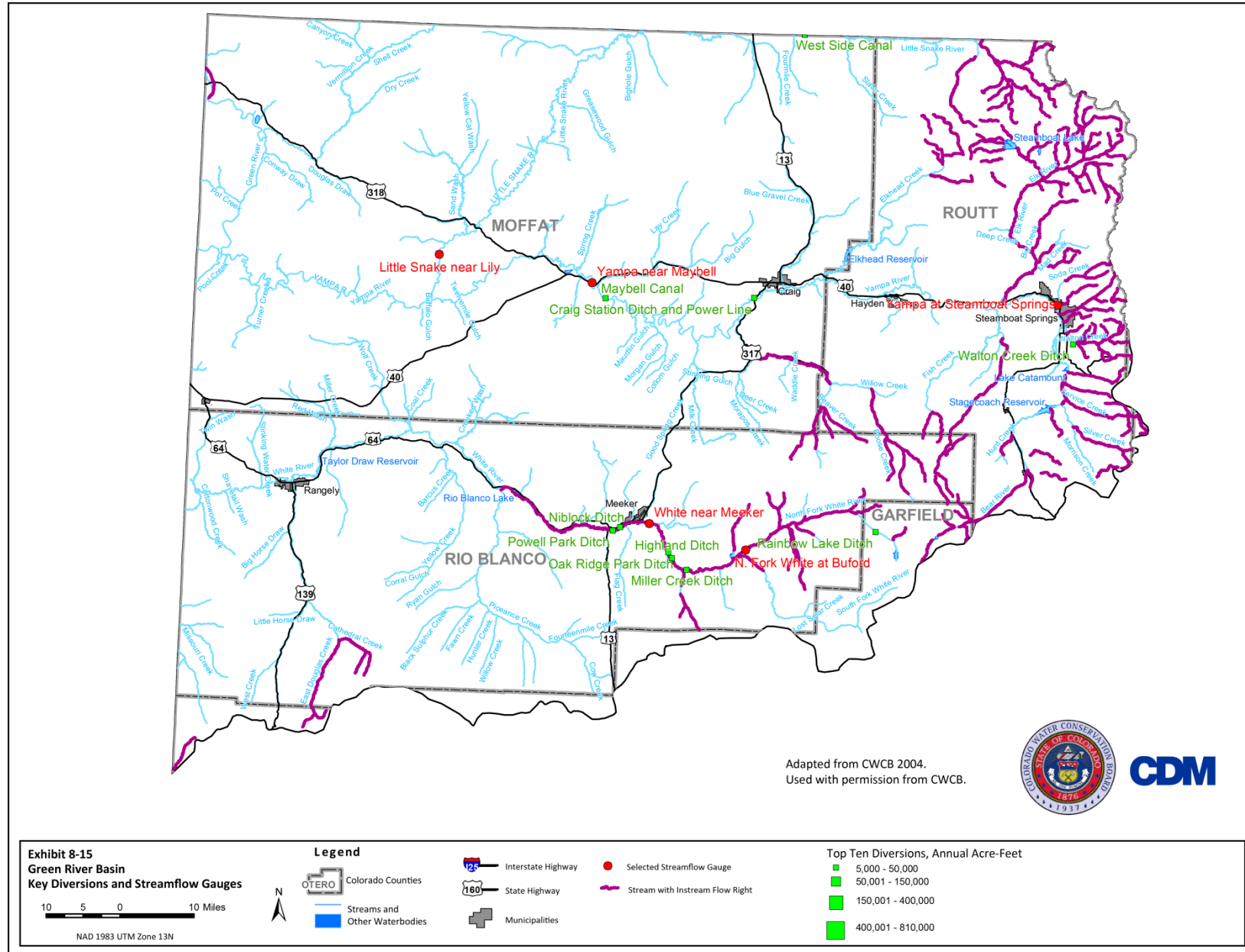
Source: CWCB 2010, DOLA 2010.

**Exhibit 8-12. in text**

**Exhibit 8-13. in text**

**Exhibit 8-14. in text**

Exhibit 8-15. Green River Basin Key Diversions and Streamflow Gauges



**Exhibit 8-16**  
Green River Basin  
Wells and Aquifers

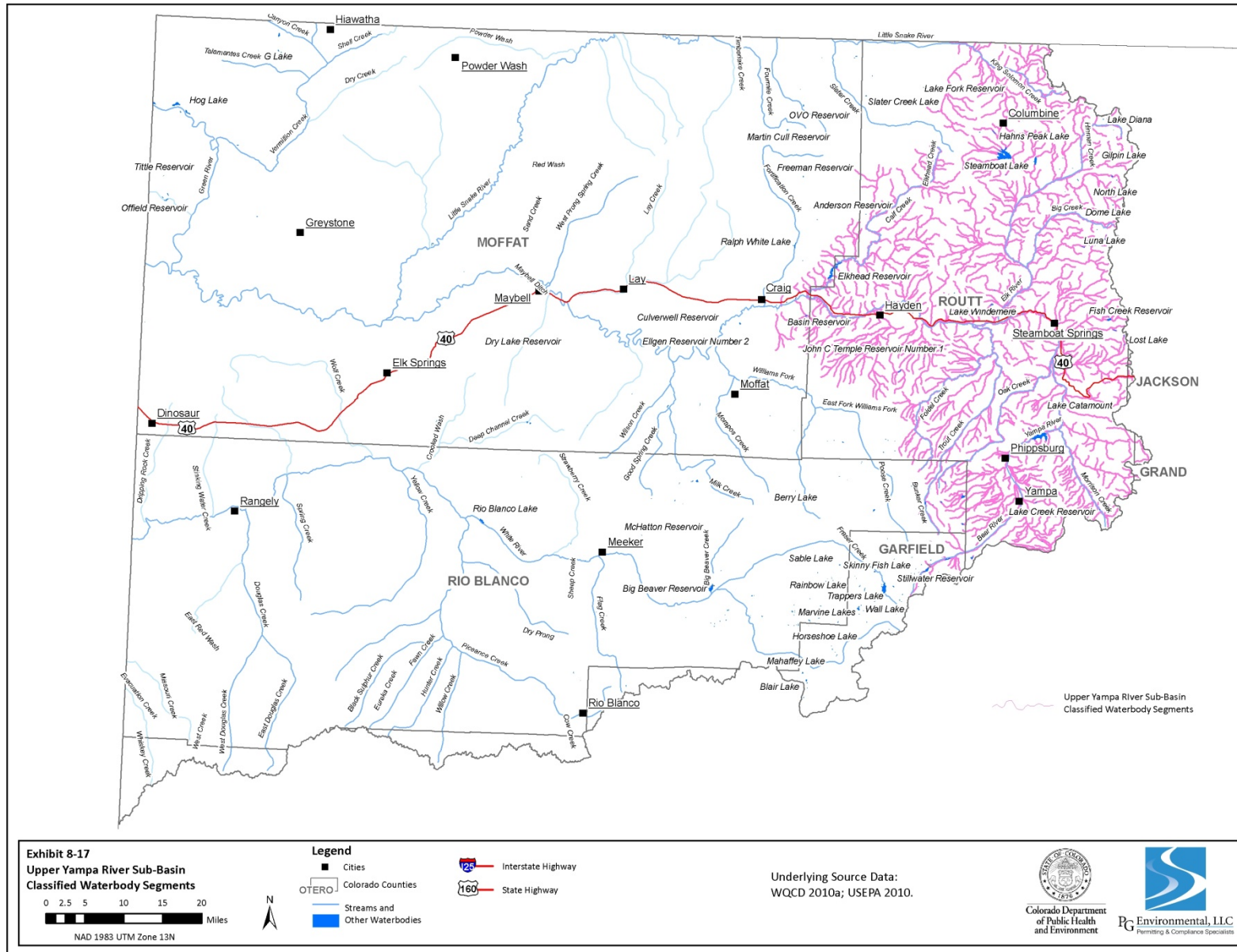
**Legend**

- Colorado Counties
- Streams and Other Waterbodies
- Interstate Highway
- State Highway
- Municipalities
- Wells (Permitted/Decreed Yield  $\geq 500$  GPM)
- Alluvial Aquifer
- Bedrock Aquifer
- Designated Basins Aquifer

Adapted from CWCB 2004.  
Used with permission from CWCB.

**CDM**

Exhibit 8-17. Upper Yampa River Sub-Basin Classified Waterbody Segments





### Exhibit 8-18. Lower Yampa/Green River Sub-Basin Classified Waterbody Segments

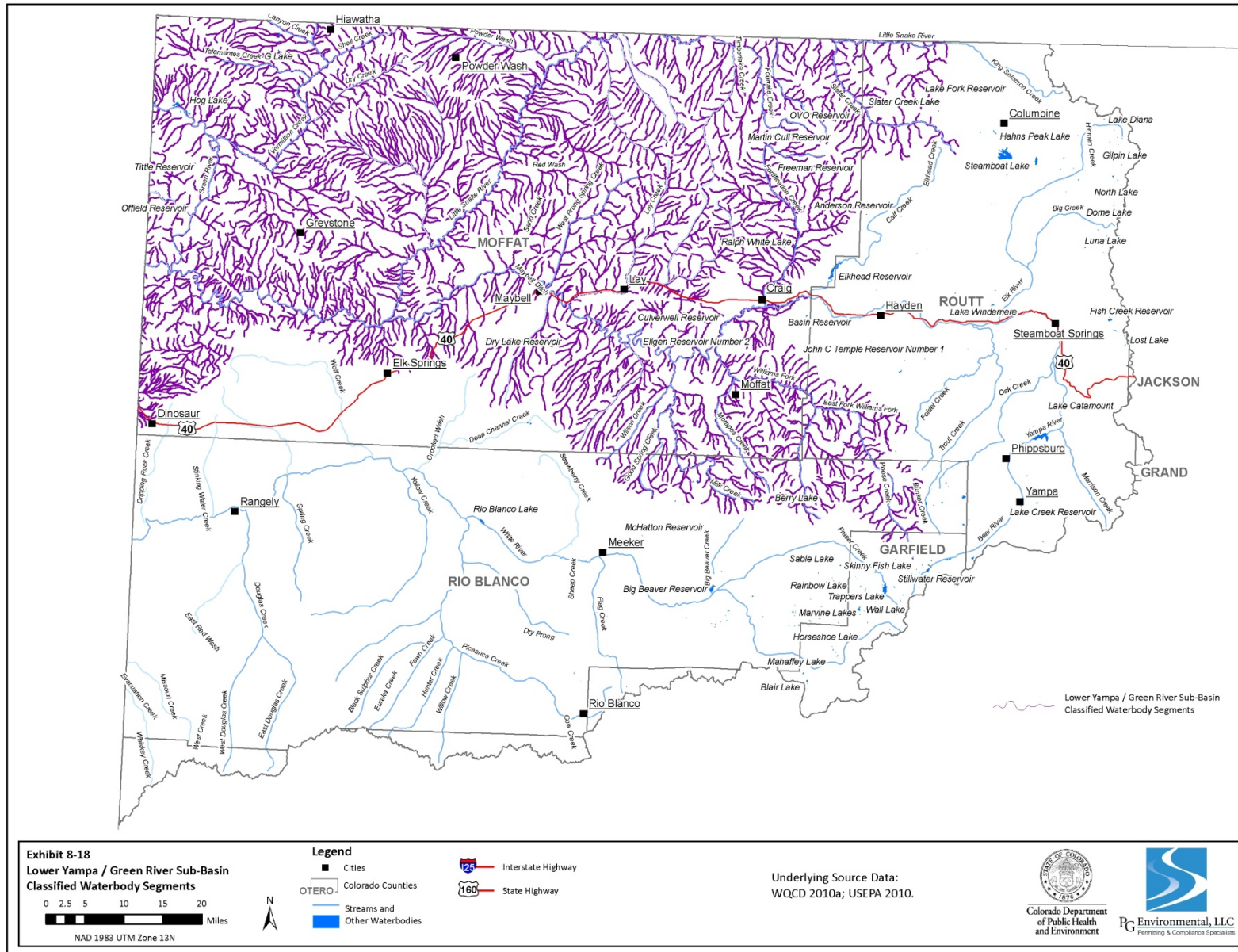


Exhibit 8-19. White River Sub-Basin Classified Waterbody Segments

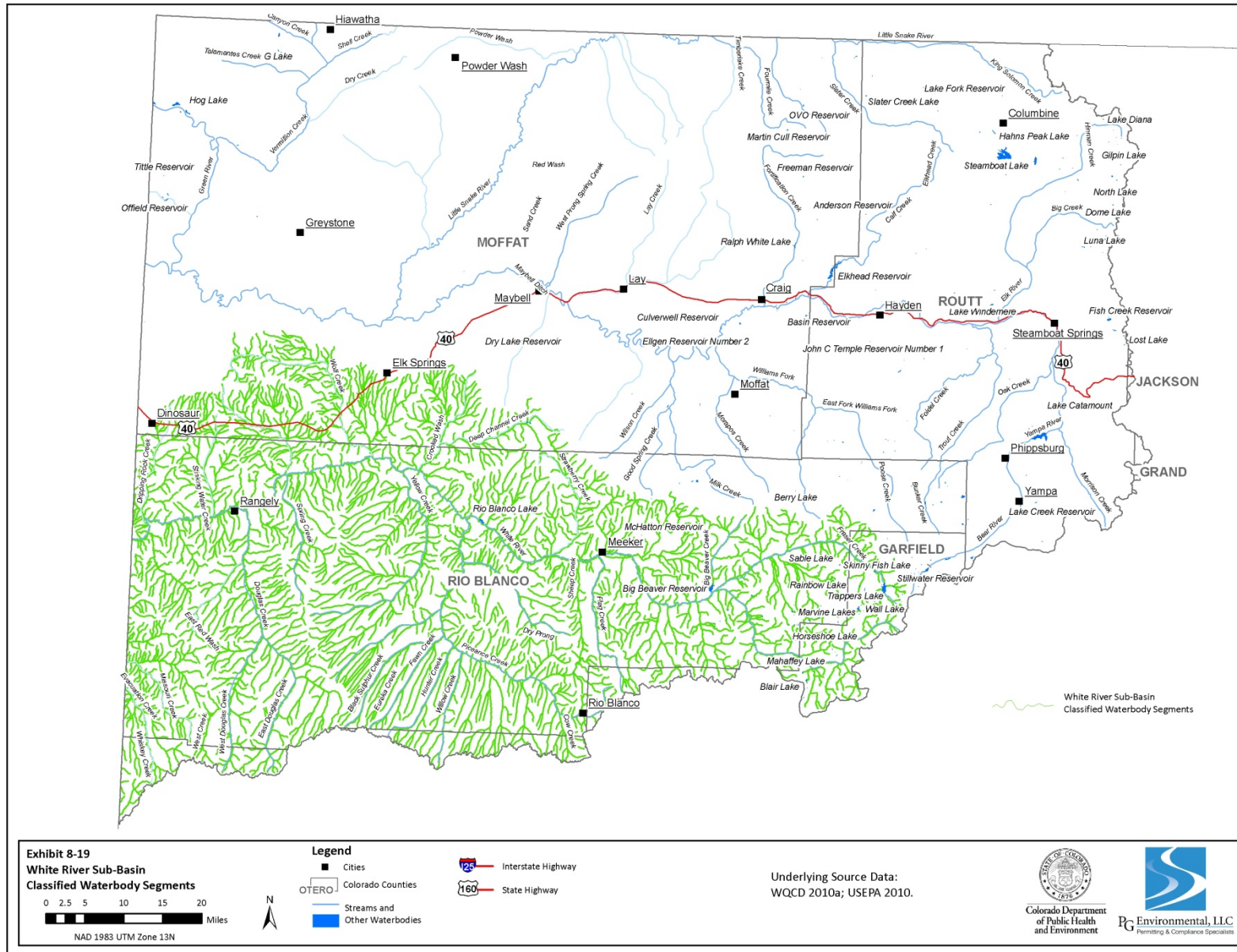




Exhibit 8-20. Green River Basin Use Classifications for Waterbody Segments

| Sub-Basin                                     | Aquatic Life |          |          |          | Recreation |           |              |              | Water Supply | Agriculture | Designations       |               |
|---|--------------|----------|----------|----------|------------|-----------|--------------|--------------|--------------|-------------|--------------------|---------------|
|   | Cold 1       | Cold 2   | Warm 1   | Warm 2   | Existing   | Potential | Not Suitable | Undetermined |              |             | Outstanding Waters | Use Protected |
| <b>Upper Yampa River</b>                      |              |          |          |          |            |           |              |              |              |             |                    |               |
| Segments (n=25)                               | 19           | 3        | 1        | 2        | 17         | 2         | 5            | 1            | 18           | 25          | 2                  | 2             |
| Miles (n=2,442.77)                            | 1,932.10     | 213.17   | 120.80   | 176.70   | 2,015.60   | 70.50     | 288.97       | 67.70        | 1,908.87     | 2,442.77    | 223.50             | 176.70        |
| <b>Lower Yampa/Green River</b>                |              |          |          |          |            |           |              |              |              |             |                    |               |
| Segments (n=42)                               | 20           | 2        | 8        | 12       | 17         | 12        | 6            | 7            | 20           | 42          | 2                  | 5             |
| Miles (n=6,284.61)                            | 1,397.30     | 988.70   | 1,731.28 | 2,167.33 | 1,557.31   | 1,511.20  | 3,216.10     | 0            | 984.58       | 6,284.61    | 30.90              | 2,874.30      |
| <b>White River</b>                            |              |          |          |          |            |           |              |              |              |             |                    |               |
| Segments (n=33)                               | 15           | 8        | 4        | 6        | 14         | 10        | 10           | 2            | 19           | 33          | 2                  | 1             |
| Miles (n=5,068.98)                            | 1,328.28     | 782.20   | 78.80    | 2,879.70 | 1,083.08   | 1,844.00  | 2,288.50     | 0            | 1,829.68     | 5,068.98    | 222.30             | 1,060.30      |
| <b>Totals Basin-Wide</b>                      |              |          |          |          |            |           |              |              |              |             |                    |               |
| Segments (n=100)                              | 54           | 13       | 13       | 20       | 48         | 24        | 21           | 10           | 57           | 100         | 6                  | 8             |
| <i>Segments as Percent of Total</i>           | 58%          | 13%      | 13%      | 20%      | 48%        | 24%       | 21%          | 10%          | 57%          | 100%        | 6%                 | 8%            |
| Miles (n=13,796.36) <sup>1</sup>              | 4,657.68     | 1,984.07 | 1,930.88 | 5,223.73 | 4,655.99   | 3,425.70  | 5,793.57     | 67.70        | 4,723.13     | 13,796.36   | 476.70             | 4,111.30      |
| <i>Miles as Percent of Total</i> <sup>1</sup> | 34%          | 14%      | 14%      | 38%      | 34%        | 25%       | 42%          | 0.5%         | 34%          | 100%        | 3%                 | 30%           |

<sup>1</sup> Lake acres are not shown.

Source: WQCC 2010a, 2010b; WQCD 2010a.

Exhibit 8-21. Upper Yampa River Sub-Basin Use Classifications by Waterbody Segment

| Stream Segment (COUCYA) <sup>1</sup> | Segment Description <sup>1</sup>   | Stream Miles <sup>1</sup> | Aquatic Life <sup>1</sup> |        |        |        | Recreation <sup>1</sup> |           |              |              | Water Supply <sup>1</sup> | Agriculture <sup>1</sup> | Designation <sup>1</sup> |
|--------------------------------------|--|---------------------------|---------------------------|--------|--------|--------|-------------------------|-----------|--------------|--------------|---------------------------|--------------------------|--------------------------|
|                                      |  |                           | Cold 1                    | Cold 2 | Warm 1 | Warm 2 | Existing                | Potential | Not Suitable | Undetermined |                           |                          |                          |
| 1a                                   | All tributaries to the Yampa River, including all wetlands, which are within the Mount Zirkel, Flat Tops and Sarvis Creek Wilderness Areas.  | 223.50                    | •                         |        |        |        | •                       |           |              |              | •                         | •                        | OW <sup>2</sup>          |
| 1b                                   | All lakes and reservoirs which are within the Mount Zirkel, Flat Tops and Sarvis Creek Wilderness Areas.   | <sup>3</sup>              | •                         |        |        |        | •                       |           |              |              | •                         | •                        | OW                       |
| 2a                                   | Mainstem of the Yampa River from the confluence with Wheeler Creek to a point immediately above the confluence with Oak Creek.   | 30.20                     | •                         |        |        |        | •                       |           |              |              | •                         | •                        |                          |
| 2b                                   | All lakes and reservoirs tributary to the Yampa River from the source to the confluence with Elkhead Creek, except for those listed in Segment 1b. All lakes and reservoirs tributary to Elkhead Creek from the source to the confluence with the Yampa River. All lakes and reservoirs tributary to the Little Snake River, including those on National Forest lands. | <sup>4</sup>              | •                         |        |        |        | •                       |           |              |              | •                         | •                        |                          |
| 2c                                   | Mainstem of the Yampa River from a point immediately above the confluence with Oak Creek to a point immediately below the confluence with Elkhead Creek.   | 57.40                     | •                         |        |        |        | •                       |           |              |              | •                         | •                        |                          |
| 3                                    | All tributaries to the Yampa River, including all wetlands, from the source to the confluence with Elk River, except for specific listings in Segments 4-8, 13a-f and 19. Mainstem of the Bear River, including all tributaries and wetlands from the boundary of the Flat Tops Wilderness Area to the confluence with the Yampa River.                                | 552.90                    | •                         |        |        |        | •                       |           |              |              | •                         | •                        |                          |
| 4                                    | Mainstem of Little White Snake Creek from the source to the confluence with the Yampa River.   | 3.67                      |                           | •      |        |        |                         |           | •            |              | •                         | •                        |                          |
| 5                                    | Mainstem of Chimney Creek, including all tributaries and wetlands, which are not on National Forest lands, from the source to the confluence with the Yampa River.   | 50.50                     | •                         |        |        |        |                         | •         |              |              |                           | •                        |                          |
| 6                                    | Mainstem of Oak Creek, including all tributaries and wetlands, from the source to the point of discharge of the Oak Creek wastewater treatment plant.  | 26.90                     | •                         |        |        |        | •                       |           |              |              | •                         | •                        |                          |

| Stream Segment (COUCYA) <sup>1</sup> | Segment Description <sup>1</sup>  | Stream Miles <sup>1</sup> | Aquatic Life <sup>1</sup> |        |        |        | Recreation <sup>1</sup> |           |              |              | Water Supply <sup>1</sup> | Agriculture <sup>1</sup> | Designation <sup>1</sup> |
|--------------------------------------|---|---------------------------|---------------------------|--------|--------|--------|-------------------------|-----------|--------------|--------------|---------------------------|--------------------------|--------------------------|
|                                      |   |                           | Cold 1                    | Cold 2 | Warm 1 | Warm 2 | Existing                | Potential | Not Suitable | Undetermined |                           |                          |                          |
| 7                                    | Mainstem of Oak Creek, including all tributaries and wetlands, from the point of discharge of the Oak Creek wastewater treatment plant to the confluence with the Yampa River.  | 20.00                     | •                         |        |        |        |                         | •         |              |              |                           | •                        |                          |
| 8                                    | Mainstem of the Elk River including, all tributaries and wetlands, from the source to the confluence with the Yampa River, except for those tributaries included in Segment 1 and 20.   | 443.00                    | •                         |        |        |        | •                       |           |              |              | •                         | •                        |                          |
| 11                                   | Fish Creek, including all tributaries and wetlands, from the source to County Road 27, except for specific listings in Segment 20.  | 28.30                     |                           | •      |        |        |                         |           | •            |              |                           | •                        |                          |
| 12                                   | All tributaries to the Yampa River, including all wetlands, from the confluence with the Elk River to the confluence with Elkhead Creek, which are not on National Forest lands, except for specific listings in Segments 11 and 13a-f.   | 181.20                    |                           | •      |        |        |                         |           | •            |              |                           | •                        |                          |
| 13a                                  | Mainstem of Trout Creek, including all tributaries and wetlands, from the source to the confluence with the Yampa River, which are not on National Forest lands, except for specific listings in Segments 13b, 13c and 13f.   | 102.60                    | •                         |        |        |        | •                       |           |              |              | •                         | •                        |                          |
| 13b                                  | Mainstem of Foidel Creek, including all tributaries and wetlands. Mainstem Fish Creek, including all tributaries from County Road 27 downstream to the confluence with Trout Creek. Middle Creek and all tributaries, from County Road 27 downstream to the confluence with Trout Creek.  | 77.20                     | •                         |        |        |        | •                       |           |              |              |                           | •                        |                          |
| 13c                                  | Mainstem of Trout Creek from the headgate of Spruce Hill Ditch (approximately 2,500 feet north of where County Road 27 crosses Trout Creek) to its confluence with Fish Creek. All tributaries to Trout Creek from the headgate of Spruce Hill Ditch (approximately 2,500 feet north of where County Road 27 crosses Trout Creek) to County Road 179 except for specific listings in 13b. | 22.00                     | •                         |        |        |        | •                       |           |              |              | •                         | •                        |                          |
| 13d                                  | Mainstem of Dry Creek, including all tributaries and wetlands, from the source to the confluence with the Yampa River near Hayden.  | 109.50                    |                           |        |        | •      | •                       |           |              |              |                           | •                        | UP <sup>5</sup>          |
| 13e                                  | Mainstems of Sage Creek and Grassy Creek, including all tributaries and wetlands, from their sources to the confluence with the Yampa River.  | 67.20                     |                           |        |        | •      |                         |           | •            |              |                           | •                        | UP                       |

| Stream Segment (COUCYA) <sup>1</sup> | Segment Description <sup>1</sup>   | Stream Miles <sup>1</sup> | Aquatic Life <sup>1</sup> |        |        |        | Recreation <sup>1</sup> |           |              |              | Water Supply <sup>1</sup> | Agriculture <sup>1</sup> | Designation <sup>1</sup> |
|--------------------------------------|--|---------------------------|---------------------------|--------|--------|--------|-------------------------|-----------|--------------|--------------|---------------------------|--------------------------|--------------------------|
|                                      |  |                           | Cold 1                    | Cold 2 | Warm 1 | Warm 2 | Existing                | Potential | Not Suitable | Undetermined |                           |                          |                          |
| 13f                                  | Mainstem of Trout Creek, including all tributaries and wetlands, from a point immediately below its confluence with Fish Creek to the confluence with the Yampa River.   | 18.60                     | •                         |        |        |        | •                       |           |              |              | •                         | •                        |                          |
| 14                                   | Mainstem of Elkhead Creek, including all tributaries and wetlands, from the boundary of the National Forest lands, to a point immediately below the confluence with Calf Creek and below 80A Road on the Dry Fork of Elkhead Creek.              | 45.80                     | •                         |        |        |        | •                       |           |              |              | •                         | •                        |                          |
| 15                                   | Mainstem of Elkhead Creek, including all tributaries and wetlands, from a point immediately below the confluence with Calf Creek and below 80A Road on the Dry Fork of Elkhead Creek, to the confluence with the Yampa River.                    | 120.80                    |                           |        | •      |        | •                       |           |              |              | •                         | •                        |                          |
| 18                                   | Mainstem of the Little Snake River, including all tributaries and wetlands, from the Routt National Forest boundary to the Colorado/Wyoming border   | 28.60                     | •                         |        |        |        | •                       |           |              |              | •                         | •                        |                          |
| 19                                   | All tributaries to the Little Snake River, including all wetlands, which are on National Forest lands in Routt County.   | 156.60                    | •                         |        |        |        | •                       |           |              |              | •                         | •                        |                          |
| 20a                                  | All tributaries to the Yampa River, including wetlands, above the confluence with Elkhead Creek that are within National Forest boundaries, except for specific listings in segment 20b.   | 67.70                     | •                         |        |        |        |                         |           |              | •            | •                         | •                        |                          |
| 20b                                  | Mainstem of First Creek from the eastern boundary of state lands in California Park to the confluence with Elkhead Creek. Mainstem of Elkhead Creek from the eastern boundary of state lands in California Park to the National Forest boundary. | 8.60                      | •                         |        |        |        |                         |           | •            |              | •                         | •                        |                          |
| Total Segments <sup>6</sup>          |  | 25                        | 19                        | 3      | 1      | 2      | 17                      | 2         | 5            | 1            | 18                        | 25                       | 4                        |
| Total Miles <sup>7,8</sup>           |  | 2,442.77                  | 1,932.10                  | 213.17 | 120.80 | 176.70 | 2,015.60                | 70.50     | 288.97       | 67.70        | 1,908.87                  | 2,442.77                 | 400.20                   |

<sup>1</sup> WQCC 2010a, 2010b; WQCD 2010a.<sup>2</sup> OW = Outstanding Waters.<sup>3</sup> Lake only segment. Lake acres = 447.60.<sup>4</sup> Lake only segment. Lake acres = 17,992.40.<sup>5</sup> UP = Use Protected.<sup>6</sup> Yampa River Basin segments 9, 10, 16, and 17 have been deleted from Regulation No. 33: *Classifications and Numeric Standards for the Upper Colorado River Basin and North Platte River* (5 CCR 1002-33).

<sup>7</sup> Totals may not add due to rounding.

<sup>8</sup> All acres for lake-only segments and lakes that are part of a segment with streams or wetlands and that have been assessed have been individually footnoted and are not included in the segment miles.

Exhibit 8-22. Lower Yampa/Green River Sub-Basin Use Classifications by Waterbody Segment

| Stream Segment (COLCLY) <sup>1</sup> | Segment Description <sup>1</sup>   | Stream Miles <sup>1</sup> | Aquatic Life <sup>1</sup> |        |        |        | Recreation <sup>1</sup> |           |              |              | Water Supply <sup>1</sup> | Agriculture <sup>1</sup> | Designation <sup>1</sup> |
|--------------------------------------|--|---------------------------|---------------------------|--------|--------|--------|-------------------------|-----------|--------------|--------------|---------------------------|--------------------------|--------------------------|
|                                      |  |                           | Cold 1                    | Cold 2 | Warm 1 | Warm 2 | Existing                | Potential | Not Suitable | Undetermined |                           |                          |                          |
| 2                                    | Mainstem of the Yampa River from a point immediately below the confluence with Elkhead Creek to the confluence with the Green River.   | 168.98                    |                           |        | •      |        | •                       |           |              |              | •                         | •                        |                          |
| 3a                                   | All tributaries to the Yampa River, including all wetlands, from a point immediately below the confluence with Elkhead Creek to a point immediately below the confluence with the Little Snake River.  | 1,093.10                  |                           |        |        | •      |                         |           | •            |              |                           | •                        | UP <sup>2</sup>          |
| 3b                                   | Mainstems of Johnson Gulch, Pyeatt Gulch, Ute Gulch, Castor Gulch, No Name Gulch, Flume Gulch, Buzzard Gulch, Coyote Gulch, Deal Gulch, Horse Gulch (BOTH), and Elk Gulch, including all tributaries from their sources to their mouths.                 | 50.60                     |                           |        |        | •      |                         | •         |              |              |                           | •                        | UP                       |
| 3c                                   | Mainstem of Milk Creek, including all tributaries and wetlands, from Thornburgh (County Rd 15) to the confluence with the Yampa River.   | 102.20                    |                           |        | •      |        |                         | •         |              |              | •                         | •                        |                          |
| 3d                                   | Mainstem of Temple Gulch, Lay Creek, and Morgan Gulch from their sources to their confluences with the Yampa River.  | 66.90                     |                           |        |        | •      |                         |           | •            |              |                           | •                        |                          |
| 3e                                   | Mainstem of Good Spring Creek above Wilson Reservoir and Wilson Creek and their tributaries except for Jubb Creek.   | 92.40                     |                           |        |        | •      |                         | •         |              |              | •                         | •                        |                          |
| 3f                                   | Big Gulch  | 28.20                     |                           |        |        | •      | •                       |           |              |              |                           | •                        |                          |
| 3g                                   | Mainstems of Ben Morgan Creek, Boxelder Gulch, Collom Gulch, Hale Gulch and Jubb Creek, including all tributaries from their sources to their mouths.  | 96.10                     |                           |        |        | •      |                         | •         |              |              |                           | •                        | UP                       |
| 4                                    | North and South Fork of Fortification Creek, including all wetlands and tributaries, from their sources to their confluence. Little Cottonwood Creek, including all tributaries and wetlands from the source to the confluence with Fortification Creek. | 33.90                     | •                         |        |        |        |                         | •         |              |              | •                         | •                        |                          |
| 5                                    | Mainstem of Fortification Creek from the confluence of the North Fork and South Fork to the confluence with the Yampa River.   | 36.90                     |                           |        | •      |        | •                       |           |              |              |                           | •                        |                          |
| 6a                                   | All tributaries to Fortification Creek, including all wetlands, from the confluence of the North and South Forks to the confluence with the Yampa River.   | 249.30                    |                           |        |        | •      |                         | •         |              |              |                           | •                        | UP                       |

| Stream Segment (COLCLY) <sup>1</sup> | Segment Description <sup>1</sup>  | Stream Miles <sup>1</sup> | Aquatic Life <sup>1</sup> |        |        |        | Recreation <sup>1</sup> |           |              |              | Water Supply <sup>1</sup> | Agriculture <sup>1</sup> | Designation <sup>1</sup> |
|--------------------------------------|---|---------------------------|---------------------------|--------|--------|--------|-------------------------|-----------|--------------|--------------|---------------------------|--------------------------|--------------------------|
|                                      |   |                           | Cold 1                    | Cold 2 | Warm 1 | Warm 2 | Existing                | Potential | Not Suitable | Undetermined |                           |                          |                          |
| 7                                    | Mainstem of Little Bear Creek, including all tributaries and wetlands, from the source to the confluence with Dry Fork.   | 34.30                     | •                         |        |        |        |                         | •         |              |              |                           | •                        |                          |
| 8                                    | Mainstem of the East Fork of the Williams Fork River, including all tributaries and wetlands which are within the boundaries of the Flat Tops Wilderness Area.  | 30.90                     | •                         |        |        |        | •                       |           |              |              | •                         | •                        | OW <sup>3</sup>          |
| 9                                    | Mainstems of the East and South Forks of the Williams Fork River, including all wetlands and tributaries, which are within the boundary of Routt National Forest.   | 153.00                    | •                         |        |        |        |                         | •         |              |              | •                         | •                        |                          |
| 10                                   | Mainstem of the East Fork of Williams Fork River including all tributaries and wetlands, from the boundary of Routt National Forest to the confluence with the South Fork of the Williams Fork River.   | 103.40                    | •                         |        |        |        | •                       |           |              |              | •                         | •                        |                          |
| 12a                                  | Mainstem of the South Fork of the Williams Fork River and Beaver Creek, including all tributaries and wetlands, from the boundary of Routt National Forest to their mouths, Milk Creek including all tributaries and wetlands from its source to a point just below the confluence with Clear Creek. Morapos Creek including all wetlands and tributaries from the source to the confluence with the Williams Fork River. | 145.10                    | •                         |        |        |        |                         | •         |              |              |                           | •                        |                          |
| 12b                                  | Milk Creek including all tributaries and wetlands from a point just below the confluence with Clear Creek to Thornburgh (County Rd 15).   | 13.00                     | •                         |        |        |        |                         | •         |              |              |                           | •                        |                          |
| 13a                                  | Mainstem of the Williams Fork River from the confluence of the East Fork and South Fork to the Highway 13/789 bridge at Hamilton.   | 17.40                     |                           | •      |        |        | •                       |           |              |              | •                         | •                        |                          |
| 13b                                  | Mainstem of the Williams Fork River from the highway 13/789 bridge at Hamilton to the confluence with the Yampa River.  | 7.30                      |                           |        |        | •      | •                       |           |              |              | •                         | •                        |                          |
| 15                                   | Those portions of the Little Snake River which are in Colorado, from its first crossing of the Colorado/Wyoming border to a point immediately above the confluence with Powder Wash (Moffatt County).   | 41.10                     | •                         |        |        |        | •                       |           |              |              | •                         | •                        |                          |
| 16                                   | Mainstem of the Little Snake River from a point immediately above the confluence with Powder Wash to the confluence with the Yampa River.   | 71.53                     |                           |        |        | •      | •                       |           |              |              |                           | •                        |                          |



| Stream Segment (COLCLY) <sup>1</sup> | Segment Description <sup>1</sup>  | Stream Miles <sup>1</sup> | Aquatic Life <sup>1</sup> |        |        |        | Recreation <sup>1</sup> |           |              |              | Water Supply <sup>1</sup> | Agriculture <sup>1</sup> | Designation <sup>1</sup> |
|--------------------------------------|---|---------------------------|---------------------------|--------|--------|--------|-------------------------|-----------|--------------|--------------|---------------------------|--------------------------|--------------------------|
|                                      |   |                           | Cold 1                    | Cold 2 | Warm 1 | Warm 2 | Existing                | Potential | Not Suitable | Undetermined |                           |                          |                          |
| 17a                                  | All tributaries to the Little Snake River from its first crossing of the Colorado/Wyoming border to a point immediately below the confluence with Fourmile Creek.   | 410.20                    | •                         |        |        |        |                         | •         |              |              |                           | •                        |                          |
| 17b                                  | All tributaries to the Little Snake River from a point immediately below the confluence with Fourmile Creek to the confluence with the Yampa River.   | 1,385.20                  |                           |        |        | •      |                         |           | •            |              |                           | •                        | UP                       |
| 18                                   | Mainstem of Slater Creek, including all tributaries and wetlands, from the source to a point just below the confluence with Second Creek. The mainstems of Fourmile and Willow Creeks, including all tributaries and wetlands, from their sources to the boundary of the Routt National Forest. | 131.10                    | •                         |        |        |        |                         | •         |              |              | •                         | •                        |                          |
| 19a                                  | Mainstem of the Green River within Colorado (Moffat County) from its entry at the Utah/Colorado border to a point just above the confluence with the Yampa River.   | 5.60                      | •                         |        |        |        | •                       |           |              |              | •                         | •                        |                          |
| 19b                                  | Mainstem of the Green River within Colorado (Moffat County) from a point just above the confluence with the Yampa River to its exit at the Utah/Colorado border.  | 38.00                     |                           |        | •      |        | •                       |           |              |              | •                         | •                        |                          |
| 20                                   | All tributaries to the Green River in Colorado, including all wetlands. All tributaries to the Yampa River from a point immediately below the confluence with the Little Snake River to the confluence with the Green River.  | 971.30                    |                           | •      |        |        | •                       |           |              |              |                           | •                        |                          |
| 21                                   | Mainstem of Beaver Creek, including all tributaries and wetlands, from the source to the confluence with the Green River within Colorado.   | 59.30                     | •                         |        |        |        |                         |           | •            |              | •                         | •                        |                          |
| 22a                                  | Mainstem of Vermillion Creek, including all tributaries and wetlands, from the Colorado/Wyoming border to a point just below the confluence with Talamantes Creek.  | 236.40                    | •                         |        |        |        |                         |           | •            |              |                           | •                        |                          |
| 22b                                  | Vermillion Creek, including all tributaries and wetlands, from a point just below the confluence with Talamantes Creek to the confluence with the Green River.  | 375.20                    |                           |        |        | •      |                         |           | •            |              |                           | •                        |                          |
| 22c                                  | Mainstem of Vermillion Creek from HWY 318 to the confluence with the Green River.   | 36.70                     |                           |        |        | •      | •                       |           |              |              |                           | •                        |                          |

| Stream Segment (COLCLY) <sup>1</sup> | Segment Description <sup>1</sup>   | Stream Miles <sup>1</sup> | Aquatic Life <sup>1</sup> |        |        |        | Recreation <sup>1</sup> |           |              |              | Water Supply <sup>1</sup> | Agriculture <sup>1</sup> | Designation <sup>1</sup> |
|--------------------------------------|--|---------------------------|---------------------------|--------|--------|--------|-------------------------|-----------|--------------|--------------|---------------------------|--------------------------|--------------------------|
|                                      |  |                           | Cold 1                    | Cold 2 | Warm 1 | Warm 2 | Existing                | Potential | Not Suitable | Undetermined |                           |                          |                          |
| 23                                   | All lakes and reservoirs tributary to the Yampa River, from a point just below the confluence with Elkhead Creek to a point just below the confluence with the Little Snake River. This segment includes Martin Cull Reservoir, and OVO Reservoir.   | 4                         |                           |        | •      |        |                         |           |              | •            |                           | •                        |                          |
| 24                                   | Freeman Reservoir and Aldrich Lakes.   | 5                         | •                         |        |        |        | •                       |           |              |              |                           | •                        |                          |
| 25                                   | All lakes and reservoirs tributary to Fortification Creek from the source to the confluence of the North and South Forks. All lakes and reservoirs tributary to Little Cottonwood Creek from the source to the confluence with Fortification Creek. All lakes and reservoirs tributary to Little Bear Creek from the source to the confluence with the Dry Fork. | 6                         | •                         |        |        |        |                         |           |              | •            | •                         | •                        |                          |
| 26                                   | All lakes and reservoirs tributary to Fortification Creek, including Ralph White Lake.   | 7                         |                           |        | •      |        |                         |           |              | •            |                           | •                        |                          |
| 27                                   | All lakes and reservoirs tributary to Milk Creek from Thornburgh (County Rd 15) to the confluence with the Yampa River, including Wilson Reservoir.  | 8                         |                           |        | •      |        |                         |           |              | •            | •                         | •                        |                          |
| 28                                   | All lakes and reservoirs tributary to the East Fork of the Williams Fork River, within the boundaries of the Flat Tops Wilderness Area.  | 6                         | •                         |        |        |        | •                       |           |              |              | •                         | •                        | OW                       |
| 29                                   | All lakes and reservoirs tributary to the East and South Forks of the Williams Fork River, and lakes and reservoirs tributary to the mainstem of the Williams Fork River, from the source to the Highway 13/789 bridge at Hamilton.  | 9                         | •                         |        |        |        | •                       |           |              |              | •                         | •                        |                          |
| 30                                   | All lakes and reservoirs tributary to Milk Creek from the source to Thornburgh (County Rd 15). All lakes and reservoirs tributary to Morapos Creek from the source to the confluence with the Williams Fork River.   | 6                         | •                         |        |        |        |                         |           |              | •            |                           | •                        |                          |
| 31                                   | All lakes and reservoirs tributary to Slater Creek, from the source to a point just below the confluence with Second Creek, including Slater Creek Lake. All lakes and reservoirs tributary to Fourmile and Willow Creeks from their sources to the boundary of the Routt National Forest.   | 10                        | •                         |        |        |        |                         |           |              | •            | •                         | •                        |                          |

| Stream Segment (COLCLY) <sup>1</sup> | Segment Description <sup>1</sup>   | Stream Miles <sup>1</sup> | Aquatic Life <sup>1</sup> |        |          |          | Recreation <sup>1</sup> |           |              |              | Water Supply <sup>1</sup> | Agriculture <sup>1</sup> | Designation <sup>1</sup> |
|--------------------------------------|--|---------------------------|---------------------------|--------|----------|----------|-------------------------|-----------|--------------|--------------|---------------------------|--------------------------|--------------------------|
|                                      |  |                           | Cold 1                    | Cold 2 | Warm 1   | Warm 2   | Existing                | Potential | Not Suitable | Undetermined |                           |                          |                          |
| 32                                   | All lakes and reservoirs tributary to the Yampa River from a point just below the confluence with the Little Snake River to the confluence with the Green River. All lakes and reservoirs tributary to the Green River in Colorado, including Hog Lake.        | 11                        |                           |        | •        |          | •                       |           |              |              |                           | •                        |                          |
| 33                                   | All lakes and reservoirs tributary to Beaver Creek from the source to the confluence with the Green River. All lakes and reservoirs tributary to Vermillion Creek from the Colorado/Wyoming border to a point just below the confluence with Talamantes Creek. | 12                        | •                         |        |          |          |                         |           |              | •            | •                         | •                        |                          |
| Total Segments <sup>13</sup>         |  | 42                        | 20                        | 2      | 8        | 12       | 17                      | 12        | 6            | 7            | 20                        | 42                       | 7                        |
| Total Miles <sup>14, 15</sup>        |  | 6,284.61                  | 1,397.30                  | 988.70 | 1,731.28 | 2,167.33 | 1,557.31                | 1,511.20  | 3,216.10     | 0            | 984.58                    | 6,284.61                 | 2,905.20                 |

<sup>1</sup> WQCC 2010a, 2010b; WQCD 2010a.<sup>2</sup> UP = Use Protected.<sup>3</sup> OW = Outstanding Waters.<sup>4</sup> Lake only segment. Lake acres = 172.90.<sup>5</sup> Lake only segment. Lake acres = 80.70.<sup>6</sup> Lake acres for this segment are unavailable.<sup>7</sup> Lake only segment. Lake acres = 127.80.<sup>8</sup> Lake only segment. Lake acres = 32.30.<sup>9</sup> Lake only segment. Lake acres = 31.90.<sup>10</sup> Lake only segment. Lake acres = 70.20.<sup>11</sup> Lake only segment. Lake acres = 388.10.<sup>12</sup> Lake only segment. Lake acres = 94.30.<sup>13</sup> Upper Yampa/Green River Basin segments 1, 6b, 11, and 14 have been deleted from Regulation No. 37: *Classifications and Numeric Standards for the Lower Colorado River Basin* (5 CCR 1002-37).<sup>14</sup> Totals may not add due to rounding.<sup>15</sup> All acres for lake-only segments and lakes that are part of a segment with streams or wetlands and that have been assessed have been individually footnoted and are not included in the segment miles.

Exhibit 8-23. White River Sub-Basin Use Classifications by Waterbody Segment

| Stream Segment (COLCWH) <sup>1</sup> | Segment Description <sup>1</sup>  | Stream Miles <sup>1</sup> | Aquatic Life <sup>1</sup> |        |        |        | Recreation <sup>1</sup> |                |              |              | Water Supply <sup>1</sup> | Agriculture <sup>1</sup> | Designation <sup>1</sup> |
|--------------------------------------|---|---------------------------|---------------------------|--------|--------|--------|-------------------------|----------------|--------------|--------------|---------------------------|--------------------------|--------------------------|
|                                      |   |                           | Cold 1                    | Cold 2 | Warm 1 | Warm 2 | Existing                | Potential      | Not Suitable | Undetermined |                           |                          |                          |
| 1+L                                  | All tributaries to the White River, including all wetlands, which are within the boundaries of the Flat Tops Wilderness Area.   | 222.30 <sup>2</sup>       | •                         |        |        |        | •                       |                |              |              | •                         | •                        | OW <sup>3</sup>          |
| 3                                    | Mainstem of the North Fork of the White River and mainstem of the White River from the Flat Tops Wilderness Area boundary to a point immediately above the confluence with Miller Creek.  | 38.48                     | •                         |        |        |        | •                       |                |              |              | •                         | •                        |                          |
| 4                                    | All tributaries to the North Fork of the White River, including all wetlands, from the Flat Tops Wilderness Area boundary to the confluence with the South Fork of the White River.   | 201.60                    | •                         |        |        |        | •                       |                |              |              | •                         | •                        |                          |
| 6                                    | Mainstem of the South Fork of the White River, including all tributaries and wetlands, from the boundary of the Flat Tops Wilderness Area to the confluence with the North Fork of the White River.   | 65.50                     | •                         |        |        |        | •                       |                |              |              | •                         | •                        |                          |
| 7                                    | Mainstem of the White River from a point immediately above the confluence with Miller Creek to a point immediately above the confluence with Piceance Creek.  | 46.80                     | •                         |        |        |        | • <sup>4</sup>          | • <sup>4</sup> |              |              | •                         | •                        |                          |
| 8                                    | All tributaries to the White River, including all wetlands, from the confluence of the North and South Forks to a point immediately above the confluence with Piceance Creek, which are within the boundaries of White River National Forest. | 135.50                    | •                         |        |        |        |                         | •              |              |              | •                         | •                        |                          |
| 9a                                   | All tributaries to the White River, including all wetlands, from the confluence of the North and South Forks to a point immediately above the confluence with Flag Creek, which are not within the boundary of national forest lands.         | 117.00                    |                           | •      |        |        |                         |                | •            |              | •                         | •                        |                          |

| Stream Segment (COLCWH) <sup>1</sup> | Segment Description <sup>1</sup>   | Stream Miles <sup>1</sup> | Aquatic Life <sup>1</sup> |        |        |        | Recreation <sup>1</sup> |           |                |              | Water Supply <sup>1</sup> | Agriculture <sup>1</sup> | Designation <sup>1</sup> |
|--------------------------------------|--|---------------------------|---------------------------|--------|--------|--------|-------------------------|-----------|----------------|--------------|---------------------------|--------------------------|--------------------------|
|                                      |  |                           | Cold 1                    | Cold 2 | Warm 1 | Warm 2 | Existing                | Potential | Not Suitable   | Undetermined |                           |                          |                          |
| 9b                                   | All tributaries to the White River, including wetlands, from a point immediately above the confluence with Flag Creek, to a point immediately above the confluence with Piceance Creek, which are not within the boundary of national forest lands.  | 351.70                    |                           | •      |        |        |                         |           | •              |              | •                         | •                        |                          |
| 9c                                   | Mainstems of Flag Creek, including all tributaries and wetlands, from the source to a point just below the confluence with the East Fork of Flag Creek.  | 41.20                     |                           | •      |        |        | • <sup>5</sup>          |           | • <sup>5</sup> |              | •                         | •                        |                          |
| 9d                                   | Sulphur Creek, including all tributaries and wetlands, from the source to the confluence with the White River. Flag Creek, including all tributaries and wetlands, from a point just below the confluence with the East Fork of Flag Creek to the confluence with the White River.   | 58.60                     |                           | •      |        |        | • <sup>5</sup>          |           | • <sup>5</sup> |              | •                         | •                        |                          |
| 10a                                  | All lakes and reservoirs tributary to the White River, from the confluence of the North and South Forks of the White River to a point immediately above the confluence of the White River and Piceance Creek.  | 6                         | •                         |        |        |        | •                       |           |                |              | •                         | •                        |                          |
| 10b                                  | Mainstem of Big Beaver Creek, Miller Creek, and North Elk Creek, including their tributaries and wetlands, from their boundary with national forest lands to their confluences with the White River. Mainstem of Coal Creek, including all tributaries and wetlands, from the source to the confluence with the White River. | 142.40                    | •                         |        |        |        |                         | •         |                |              | •                         | •                        |                          |
| 11                                   | Rio Blanco Lake and Taylor Draw Reservoir (a.k.a. Kenney Reservoir).   | 7                         |                           |        | •      |        | •                       |           |                |              | •                         | •                        |                          |
| 12.+L <sup>4</sup>                   | Mainstem of the White River from a point immediately above the confluence with Piceance Creek to a point immediately above the confluence with Douglas Creek.  | 50.10 <sup>8</sup>        |                           |        | •      |        | •                       |           |                |              | •                         | •                        |                          |
| 13a                                  | All tributaries to the White River, including all wetlands, from a point immediately below the confluence with Piceance Creek to a point immediately above the confluence with Douglas Creek.  | 1,060.30                  |                           |        |        | •      |                         |           | •              |              |                           | •                        | UP <sup>9</sup>          |

| Stream Segment (COLCWH) <sup>1</sup> | Segment Description <sup>1</sup>   | Stream Miles <sup>1</sup> | Aquatic Life <sup>1</sup> |        |        |        | Recreation <sup>1</sup> |           |              |              | Water Supply <sup>1</sup> | Agriculture <sup>1</sup> | Designation <sup>1</sup> |
|--------------------------------------|--|---------------------------|---------------------------|--------|--------|--------|-------------------------|-----------|--------------|--------------|---------------------------|--------------------------|--------------------------|
|                                      |  |                           | Cold 1                    | Cold 2 | Warm 1 | Warm 2 | Existing                | Potential | Not Suitable | Undetermined |                           |                          |                          |
| 13b                                  | Mainstem of Yellow Creek including all wetlands from the source to the confluence with Barcus Creek. All tributaries to Yellow Creek from the source to the White River, including wetlands.   | 355.20                    |                           |        |        | •      |                         |           | •            |              |                           | •                        |                          |
| 13c                                  | Mainstem of Yellow Creek, including all wetlands from immediately below the confluence with Barcus Creek to the confluence with the White River.   | 5.90                      |                           |        |        | •      |                         |           | •            |              |                           | •                        |                          |
| 13d                                  | Violet Springs Ponds.  | 10                        |                           | •      |        |        |                         | •         |              |              |                           | •                        |                          |
| 14a                                  | Mainstem of Piceance Creek from the source to a point just below the confluence with Hunter Creek.   | 29.70                     | •                         |        |        |        |                         | •         |              |              |                           | •                        |                          |
| 14b                                  | Mainstem of Piceance Creek from a point just below the confluence with Hunter Creek to a point just below the confluence with Ryan Gulch.  | 6.60                      | •                         |        |        |        |                         | •         |              |              |                           | •                        |                          |
| 15                                   | Mainstem of Piceance Creek from a point just below the confluence with Ryan Gulch to the confluence with the White River. The Dry Fork of Piceance Creek, including all tributaries and wetlands, from a point just below the confluence with Little Reigan Gulch to the confluence with Piceance Creek. | 35.70                     |                           |        |        | •      |                         | •         |              |              |                           | •                        |                          |
| 16                                   | All tributaries to Piceance Creek, including all wetlands, from the source to the confluence with the White River.   | 448.80                    |                           |        |        | •      |                         | •         |              |              |                           | •                        |                          |
| 17                                   | Stewart Gulch from the sources of the East Middle, and West Forks to the confluence with Piceance Creek.   | 38.40                     |                           | •      |        |        |                         |           | •            |              |                           | •                        |                          |
| 18                                   | Mainstem of the Dry Fork of Piceance Creek, including all tributaries and wetlands, from the source to a point just below the confluence with Little Reigan Gulch. Willow and Hunter Creeks, including all tributaries and wetlands, from their sources to their confluences with Piceance Creek.        | 150.60                    |                           | •      |        |        |                         |           | •            |              |                           | •                        |                          |
| 19                                   | Mainstem of Fawn Creek from the source to the confluence with Black Sulphur Creek.   | 24.70                     |                           | •      |        |        |                         | •         |              |              |                           | •                        |                          |

| Stream Segment (COLCWH) <sup>1</sup> | Segment Description <sup>1</sup>   | Stream Miles <sup>1</sup> | Aquatic Life <sup>1</sup> |        |        |          | Recreation <sup>1</sup> |           |              |              | Water Supply <sup>1</sup> | Agriculture <sup>1</sup> | Designation <sup>1</sup> |
|--------------------------------------|--|---------------------------|---------------------------|--------|--------|----------|-------------------------|-----------|--------------|--------------|---------------------------|--------------------------|--------------------------|
|                                      |  |                           | Cold 1                    | Cold 2 | Warm 1 | Warm 2   | Existing                | Potential | Not Suitable | Undetermined |                           |                          |                          |
| 20                                   | Mainstems of Black Sulphur Creek including all tributaries and wetlands from the source to the confluence with Piceance Creek.   | 109.60                    | •                         |        |        |          |                         |           | •            |              |                           | •                        |                          |
| 21                                   | Mainstem of the White River from a point immediately above the confluence with Douglas Creek to the Colorado/Utah border.  | 28.70                     |                           |        | •      |          | •                       |           |              |              | •                         | •                        |                          |
| 22                                   | All tributaries to the White River, including all wetlands, from a point immediately above the confluence with Douglas Creek to the Colorado/Utah border.  | 973.80                    |                           |        |        | •        |                         | •         |              |              |                           | •                        |                          |
| 23                                   | Mainstems of East Douglas Creek and West Douglas Creek, including all tributaries and wetlands, from their sources to their confluence.  | 329.80                    | •                         |        |        |          | •                       |           |              |              | •                         | •                        |                          |
| 24                                   | All lakes and reservoirs tributary to the White River, which are within the boundaries of the Flat Tops Wilderness Area, including Trappers Lake.  | 11                        | •                         |        |        |          | •                       |           |              |              | •                         | •                        | OW                       |
| 25                                   | Lake Avery (a.k.a Big Beaver Reservoir).   | 12                        | •                         |        |        |          | •                       |           |              |              | •                         | •                        |                          |
| 26                                   | All lakes and reservoirs tributary to the North and South Forks of the White River, from the Flat Tops Wilderness Area boundary to the confluence with the North and South Forks of the White River. | 10                        | •                         |        |        |          |                         |           |              | •            | •                         | •                        |                          |
| 27                                   | All lakes and reservoirs tributary to the White River, from a point immediately above the confluence with Piceance Creek to the Colorado/Utah border.  | 13                        |                           |        | •      |          |                         |           |              | •            |                           | •                        |                          |
| Total Segments <sup>14</sup>         |  | 33                        | 15                        | 8      | 4      | 6        | 14                      | 10        | 10           | 2            | 19                        | 33                       | 3                        |
| Total Miles <sup>15, 16</sup>        |  | 5,068.98                  | 1,328.28                  | 782.20 | 78.80  | 2,879.70 | 1,083.08                | 1,844.00  | 2,288.50     | 0            | 1,829.68                  | 5,068.98                 | 1,282.60                 |

<sup>1</sup> WQCC 2010a, 2010b; WQCD 2010.<sup>2</sup> Assessed lakes in this segment total 22.11 acres.<sup>3</sup> OW = Outstanding Waters.<sup>4</sup> Segment is potentially suitable for recreational uses from December 1 to March 1 and has existing recreational uses from March 2 to November 30 annually.<sup>5</sup> Segment is not suitable for recreational uses from September 1 to May 31 and has existing recreational uses from June 1 to August 31 annually.<sup>6</sup> Lake only segment. Lake acres = 143.00.<sup>7</sup> Lake only segment. Lake acres = 531.30.<sup>8</sup> Assessed lakes in this segment total 615.00 acres.<sup>9</sup> UP = Use Protected.



<sup>10</sup> Lake acres for this segment are unavailable.

<sup>11</sup> Lake only segment. Lake acres = 1,171.80.

<sup>12</sup> Lake only segment. Lake acres = 201.00.

<sup>13</sup> Lake only segment. Lake acres = 128.40.

<sup>14</sup> White River Basin segments 2 and 5 have been deleted from Regulation No. 37: *Classifications and Numeric Standards for the Lower Colorado River Basin* (5 CCR 1002-37).

<sup>15</sup> Totals may not add due to rounding.

<sup>16</sup> All acres for lake-only segments and lakes that are part of a segment with streams or wetlands and that have been assessed have been individually footnoted and are not included in the segment miles.

Exhibit 8-24. in text

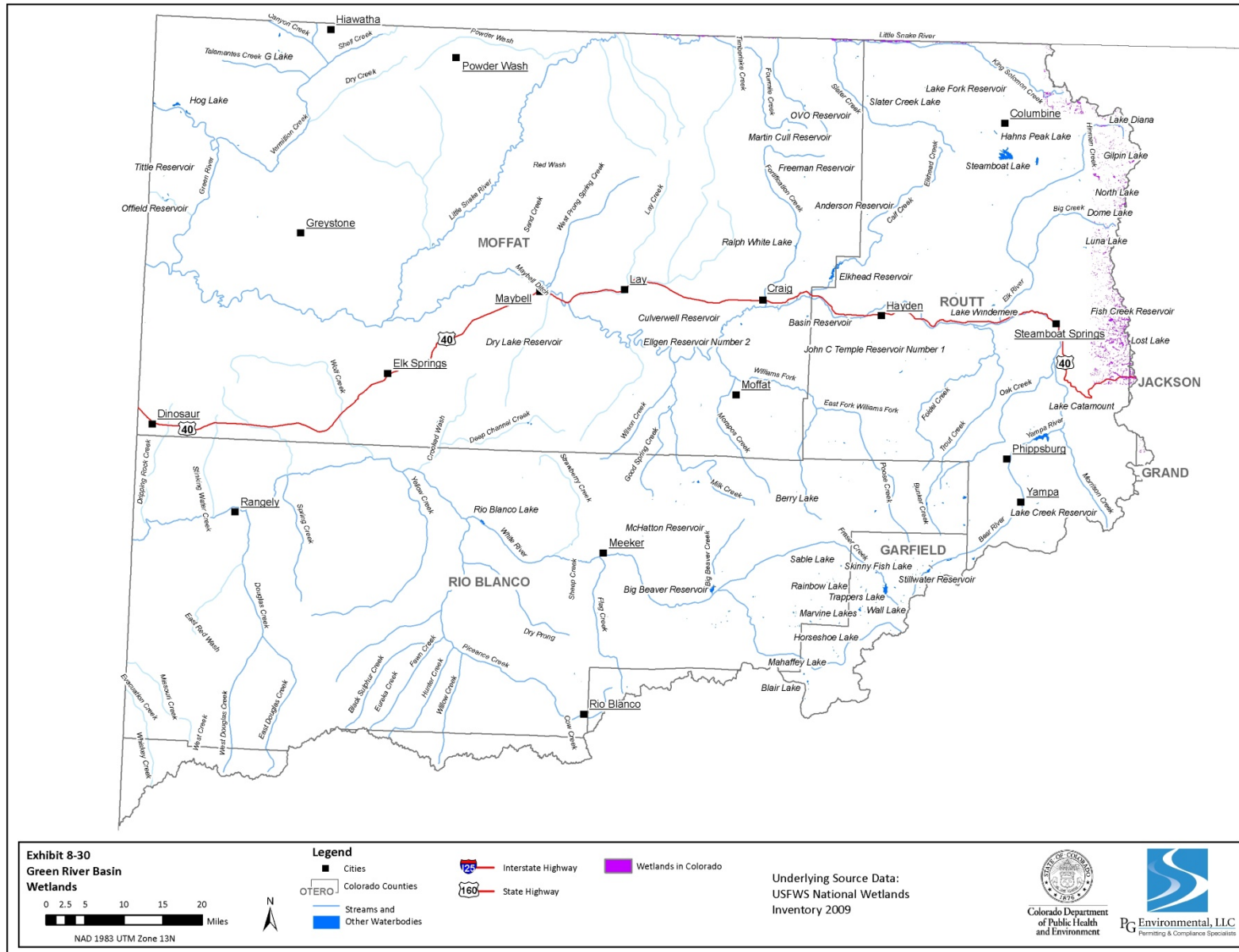
Exhibit 8-25. in text

Exhibit 8-26. in text

Exhibit 8-27. in text

Exhibit 8-28. in text

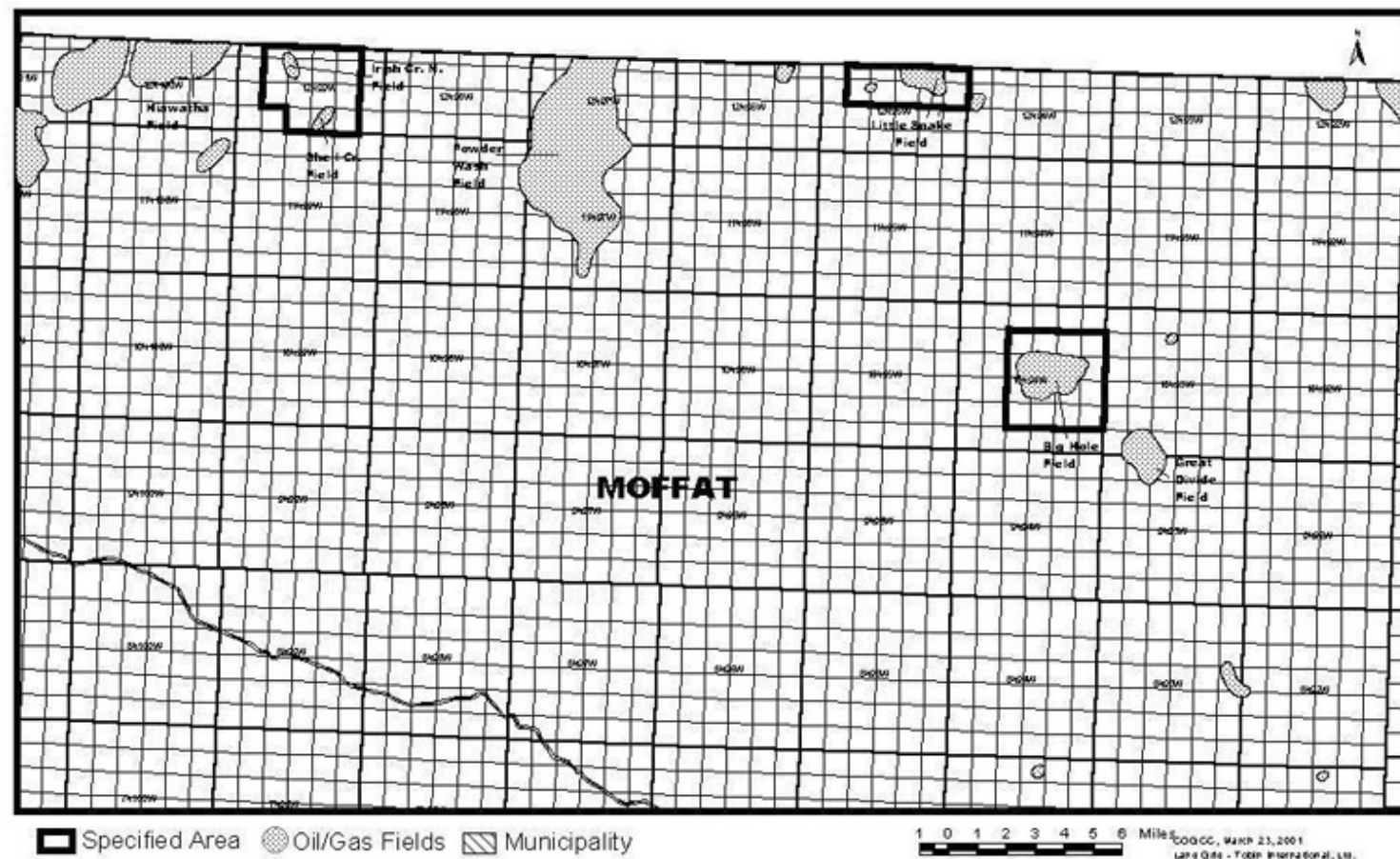
Exhibit 8-29. Green River Basin Wetlands



**Exhibit 8-30 in text.**

**Exhibit 8-31. in text**

Exhibit 8-32. Lower Yampa/Green River Sub-Basin; Oil and Gas Fields of Northern Moffat County, Moffat County

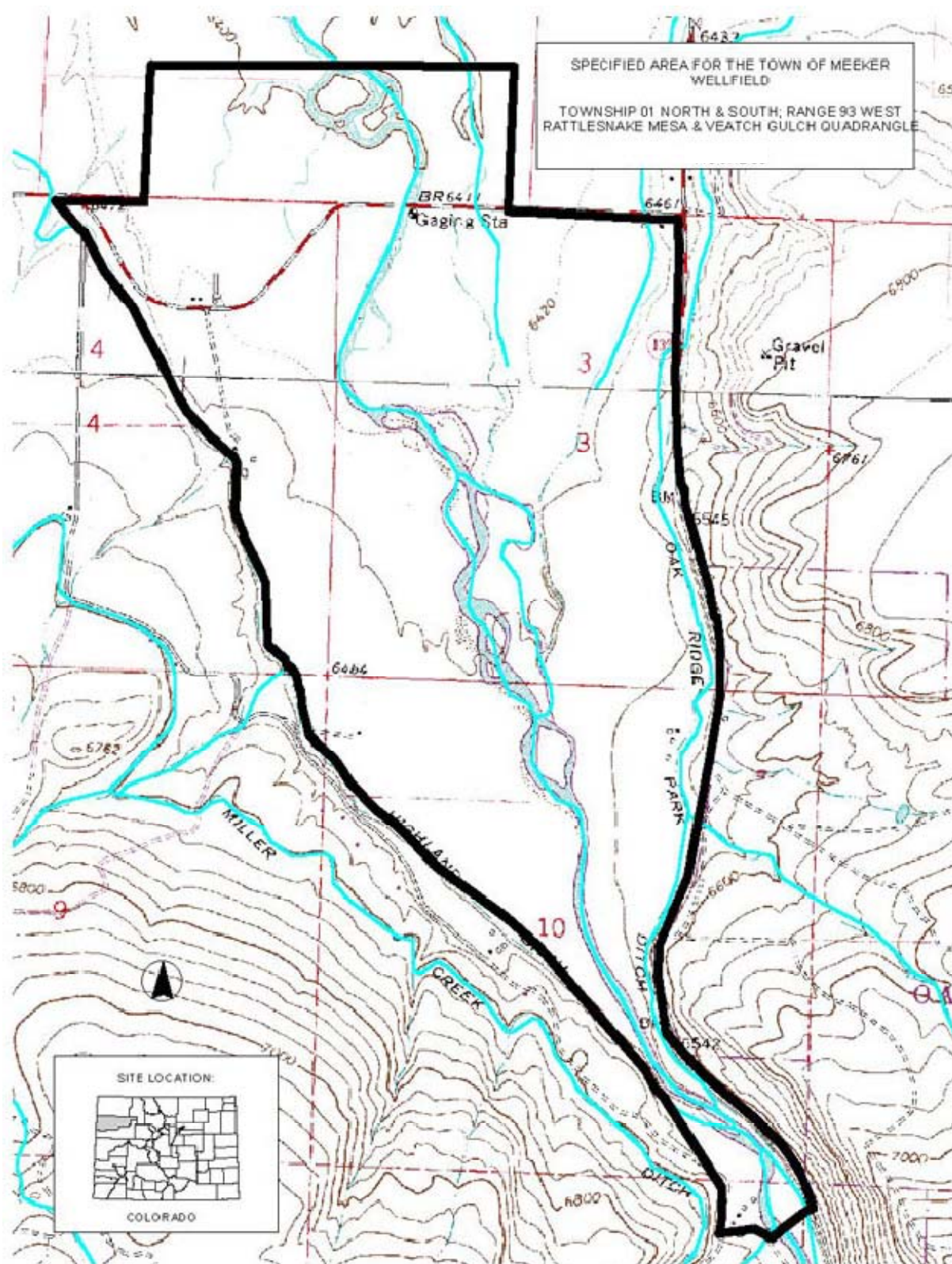
**SPECIFIED AREA FOR COLORADO OIL AND GAS FIELDS, MOFFAT COUNTY, COLORADO**

SECTIONS 9-16, 21-28 T10N, R94W;  
 SECTIONS 13-17, 20-24 T12N, R95W;  
 SECTIONS 14-17, 20-23, 26-29, 33-35, T12N, R99W

Source: WQCC 2006b.

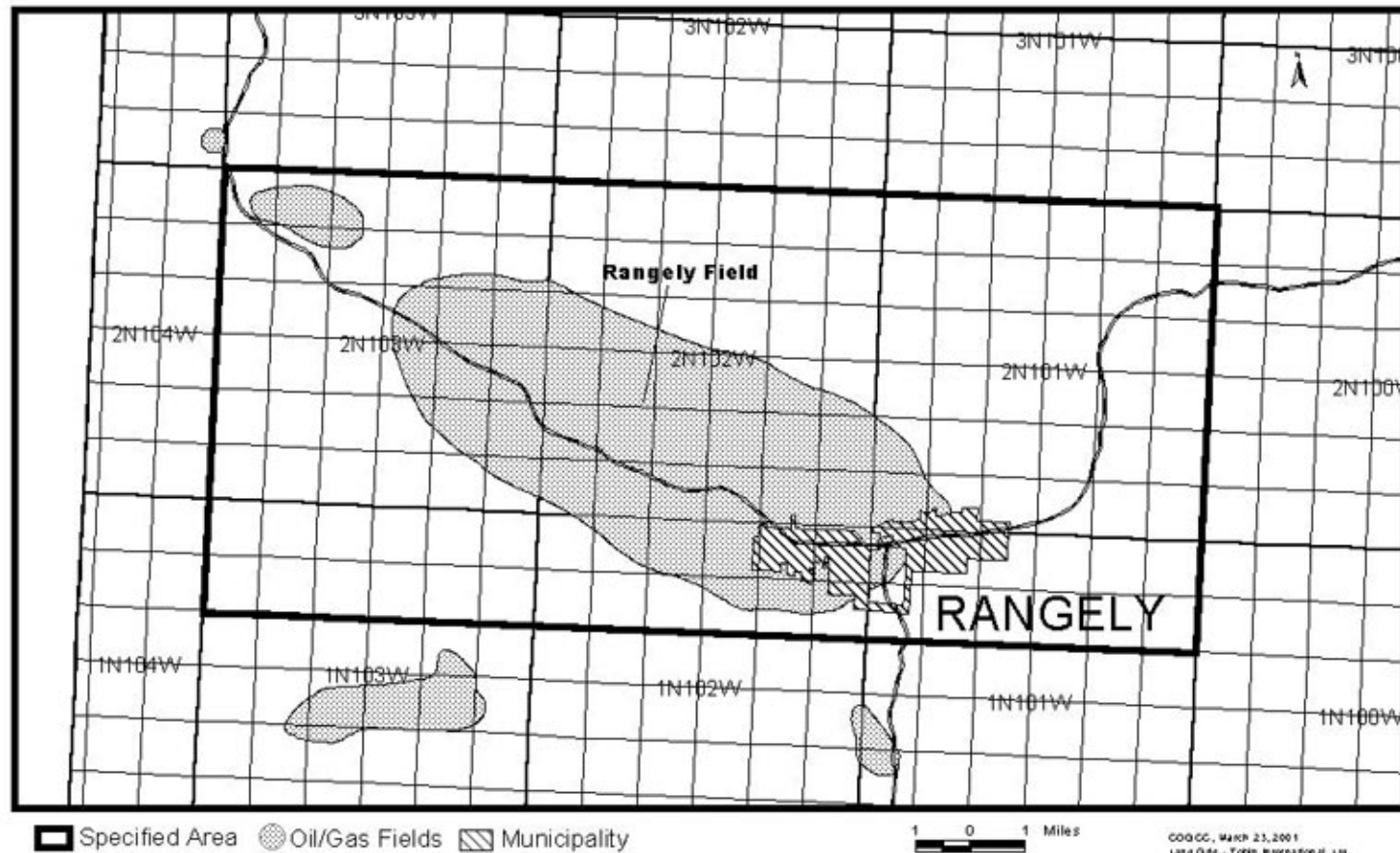


Exhibit 8-33. White River Sub-Basin; Town of Meeker Wellfield, Rio Blanco County



Source: WQCC 2006b.

Exhibit 8-34. White River Sub-Basin; Rangely Oil and Gas Fields of Rio Blanco County, Rio Blanco County

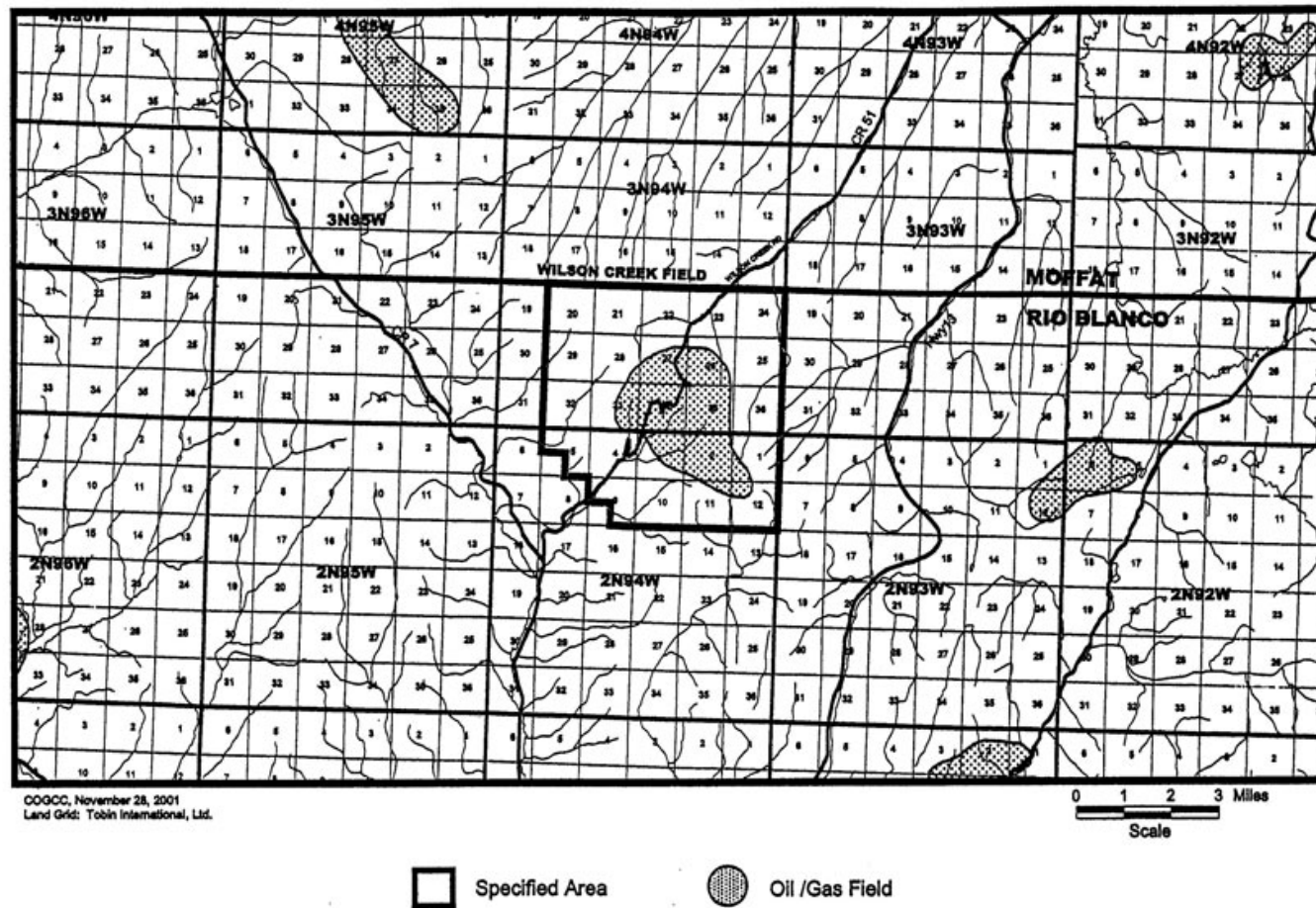
**SPECIFIED AREA FOR COLORADO OIL AND GAS FIELDS, RIO BLANCO COUNTY, COLORADO**

SEC 1 THROUGH SEC 12 OF T1N, R101W;  
 SEC 1 THROUGH SEC 12 OF T1N, R102W;  
 SEC 1 THROUGH SEC 12 OF T1N, R103W;  
 ALL OF T2N, R101W THROUGH T2N, R103W

Source: WQCC 2006b.



Exhibit 8-35. White River Sub-Basin; Oil and Gas Field of Rio Blanco County, Rio Blanco County



Source: WQCC 2006b.

**Exhibit 8-36. in text**

**Exhibit 8-37. in text**

Exhibit 8-38. Green River Basin Impaired Stream Segments

| Number of Impaired Segments  | Total Stream Miles Impaired | Use Categories Not Being Attained<br>(Percent of Classified Uses by Category Basin Wide) |                                |                            |                             |                                    |                                |                     |                     | Parameters<br>(number of impacted segments)                    |
|--|-----------------------------|--|--------------------------------|----------------------------|-----------------------------|------------------------------------|--------------------------------|---------------------|---------------------|--|
|  |                             | Aquatic Life Cold Water (n=67)   | Aquatic Life Warm Water (n=33) | Existing Recreation (n=48) | Potential Recreation (n=24) | Not Suitable for Recreation (n=21) | Undetermined Recreation (n=10) | Water Supply (n=57) | Agriculture (n=100) |  |
| Upper Yampa River (n=25 segments and 2,442.77 stream miles)                        |                             |  |                                |                            |                             |                                    |                                |                     |                     |  |
| 5  | 183.40                      | 2<br>(3%)  | 3<br>(9%)                      | 1<br>(2%)                  | 0<br>(0%)                   | 0<br>(0%)                          | 0<br>(0%)                      | 0<br>(0%)           | 0<br>(0%)           | Selenium (2)<br>Sediment (1)<br>Iron (1)<br><i>E. coli</i> (1) |
| Lower Yampa/Green River (n=42 segments and 6,284.61 stream miles)                  |                             |  |                                |                            |                             |                                    |                                |                     |                     |  |
| 2  | 205.88                      | 0<br>(0%)  | 2<br>(6%)                      | 0<br>(0%)                  | 0<br>(0%)                   | 0<br>(0%)                          | 0<br>(0%)                      | 0<br>(0%)           | 0<br>(0%)           | Selenium (1)<br>Iron (1)                                       |
| White River (n= 33 segments and 5,068.98 stream miles)                             |                             |  |                                |                            |                             |                                    |                                |                     |                     |  |
| 2  | 92.20                       | 1<br>(1%)  | 1<br>(3%)                      | 0<br>(0%)                  | 0<br>(0%)                   | 0<br>(0%)                          | 0<br>(0%)                      | 0<br>(0%)           | 0<br>(0%)           | Selenium (1)<br>Sediment (1)                                   |
| Basin-Wide (n= 100 segments and 13,796.36 stream miles)                            |                             |  |                                |                            |                             |                                    |                                |                     |                     |  |
| 9  | 481.48                      | 3<br>(4%)  | 6<br>(18%)                     | 1<br>(2%)                  | 0<br>(0%)                   | 0<br>(0%)                          | 0<br>(0%)                      | 0<br>(0%)           | 0<br>(0%)           | Selenium (4)<br>Sediment (2)<br>Iron (2)<br><i>E. coli</i> (1) |
| Impaired Segments and Miles As Percent of Total Segments and Stream Miles in Basin |                             |  |                                |                            |                             |                                    |                                |                     |                     |  |
| 9%   | 3%                          |  |                                |                            |                             |                                    |                                |                     |                     |  |

Sources: WQCC 2010c; WQCD 2010a, appendices A to D.



Exhibit 8-39. Green River Basin Impaired Lakes/Reservoir Segments

| Number of Impaired Segments   | Total Acres Impaired | Use Categories Not Being Attained<br>(Percent of Classified Uses by Category Basin Wide) |                               |                            |                            |                                   |                               |                     |                    | Parameters<br>(number of impacted segments) |
|---|----------------------|--|-------------------------------|----------------------------|----------------------------|-----------------------------------|-------------------------------|---------------------|--------------------|---|
|   |                      | Aquatic Life Cold Water (n=15)   | Aquatic Life Warm Water (n=7) | Existing Recreation (n=12) | Potential Recreation (n=1) | Not Suitable for Recreation (n=0) | Undetermined Recreation (n=9) | Water Supply (n=15) | Agriculture (n=22) |   |
| Upper Yampa River (n=2 segments and 18,440.00 acres)                                |                      |  |                               |                            |                            |                                   |                               |                     |                    |   |
| 1   | 14,310.90            | 1<br>(7%)  | 0<br>(0%)                     | 0<br>(0%)                  | 0<br>(0%)                  | 0<br>(0%)                         | 0<br>(0%)                     | 0<br>(0%)           | 0<br>(0%)          | Mercury (1)                                 |
| Lower Yampa/Green River (n=11 segments and 998.20 acres)                            |                      |  |                               |                            |                            |                                   |                               |                     |                    |   |
| There are no impaired lakes or reservoirs in the Lower Yampa/Green River Sub-Basin. |                      |  |                               |                            |                            |                                   |                               |                     |                    |   |
| White River (n= 9 segments and 2,812.61 acres)                                      |                      |  |                               |                            |                            |                                   |                               |                     |                    |   |
| There are no impaired lakes or reservoirs in the White River Sub-Basin.             |                      |  |                               |                            |                            |                                   |                               |                     |                    |   |
| Basin-Wide (n= 22 segments and 22,250.81 acres)                                     |                      |  |                               |                            |                            |                                   |                               |                     |                    |   |
| 1   | 14,310.90            | 1<br>(7%)  | 0<br>(0%)                     | 0<br>(0%)                  | 0<br>(0%)                  | 0<br>(0%)                         | 0<br>(0%)                     | 0<br>(0%)           | 0<br>(0%)          | Mercury (1)                                 |
| Impaired Segments and Acres As Percent of Total Segments and Lake Acres in Basin    |                      |  |                               |                            |                            |                                   |                               |                     |                    |   |
| 5%  | 64%                  |  |                               |                            |                            |                                   |                               |                     |                    |   |

Sources: WQCC 2010c; WQCD 2010, appendices A to D.

Exhibit 8-40. Green River Basin Impaired Waterbody Segments

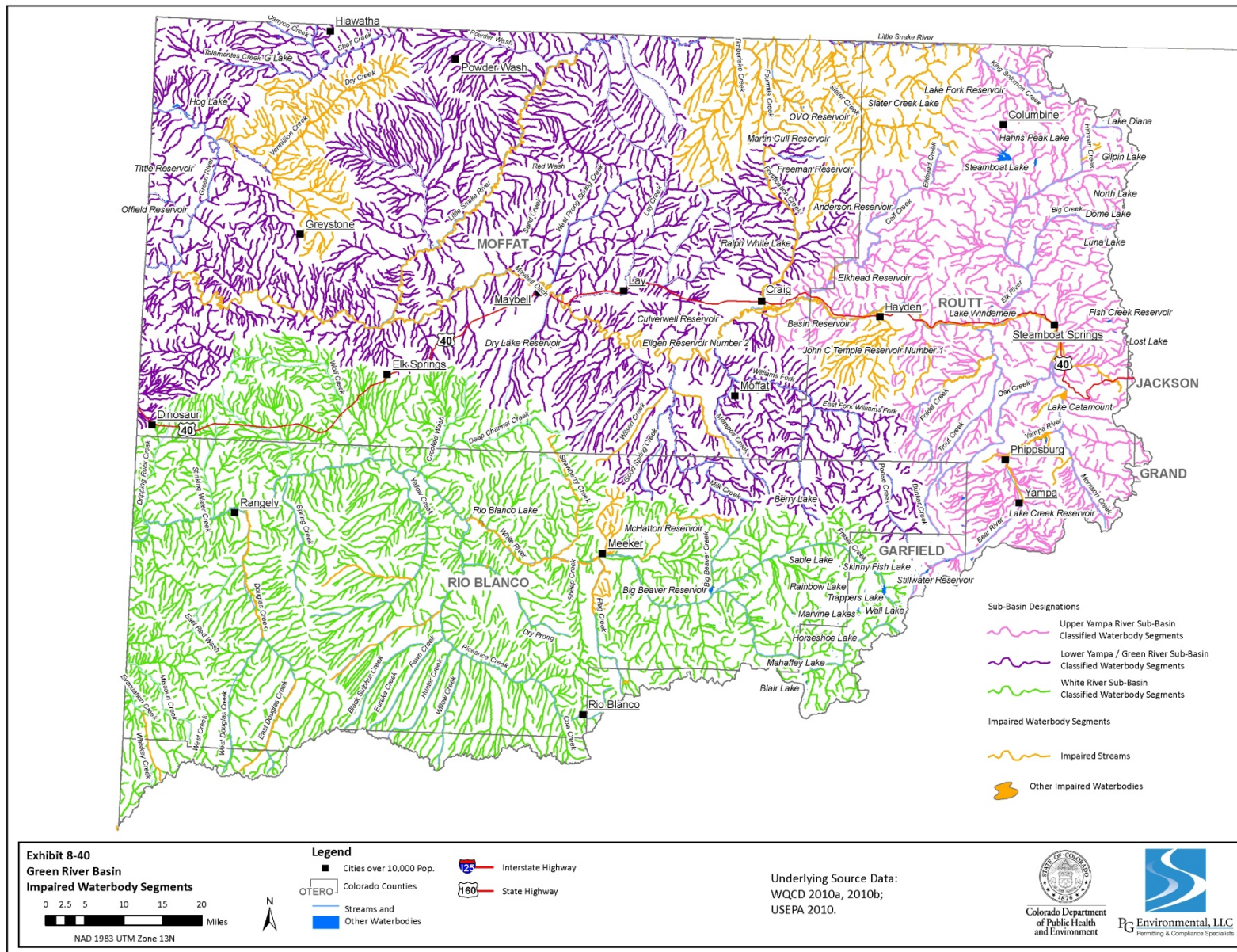


Exhibit 8-41. Upper Yampa River Sub-Basin Impairments by Stream Segment<sup>1</sup>

| Stream Segment (COUCYA)                  | Stream Miles | Were All Uses Attained in 2010? | Segment Portion                        | Portion Miles <sup>2</sup> | Use(s) Not Attained <sup>3</sup> |    |    |    |    |     |    |    | Desig           | Parameter(s) Causing Impairments <sup>4</sup> |         |    |    | Source <sup>5</sup> | TMDL Development Status <sup>6</sup> |   |   |
|--|--------------|---------------------------------|--|----------------------------|----------------------------------|----|----|----|----|-----|----|----|-----------------|---|---------|----|----|---------------------|--------------------------------------|---|---|
|  |              |                                 |  |                            | C1                               | C2 | W1 | W2 | RE | RNS | WS | AG |                 | Sediment                                      | E. coli | Se | Fe |                     | L                                    | M | H |
|  |              |                                 |  |                            |                                  |    |    |    |    |     |    |    |                 |   |         |    |    |                     |                                      |   |   |
| 2c                                       | 57.40        | N                               | Yampa River                            | 57.40                      | •                                |    |    |    |    |     |    |    |                 |   |         |    |    |                     |                                      |   |   |
| 3  | 552.9        | N                               | Bushy Creek                            | 5.10                       | •                                |    |    |    |    |     |    |    |                 | •   |         |    |    | UK                  | •                                    |   |   |
| 8  | 443.00       | N                               | Elk River below Morin Ditch            | 6.80                       |                                  |    |    |    | •  |     |    |    |                 |   | •       |    |    | M                   |                                      |   | • |
| 13d                                      | 109.50       | N                               | Below Seneca sample location 8 (WSD5)  | 108.50                     |                                  |    |    | •  |    |     |    |    | UP <sup>7</sup> |   |         | •  |    | UK                  | •                                    |   |   |
| 13d                                      | 109.50       | N                               | all                                    | 109.50                     |                                  |    |    | •  |    |     |    |    | UP              |   |         |    | •  | N/A                 | •                                    |   |   |
| 13e                                      | 67.20        | N                               | Sage Creek below Routt County Road 51D | 4.60                       |                                  |    |    | •  |    |     |    |    | UP              |   |         | •  |    | UK                  | •                                    |   |   |
| Total Segments Impaired <sup>8</sup>     |              |                                 | 5                                      |                            |                                  |    |    |    |    |     |    |    |                 |   |         |    |    |                     |                                      |   |   |
| Total Stream Miles Impaired <sup>9</sup> |              |                                 | 183.40                                 |                            |                                  |    |    |    |    |     |    |    |                 |   |         |    |    |                     |                                      |   |   |

<sup>1</sup> The table includes all segments that are not attaining one or more of their classified uses as presented in appendix A of the 2010 Integrated Report. This can include segments for which a TMDL has been developed (which means the segment is not listed on the 2010 CWA section 303(d) list (Regulation No. 93) (WQCC 2010c; WQCD 2010a). For these segments it likely means that the full effects of TMDL implementation are yet to be realized and the segment has yet to attain its classified uses. The cells for “parameters causing impairments,” “source(s),” and “TMDL development status” are left blank in these cases.

<sup>2</sup> Totals may not add due to rounding. Note that lake acres have not been totaled.

<sup>3</sup> Key to Classified Uses: C1 = Aquatic Life Cold Water 1, C2 = Aquatic Life Cold Water 2, W1 = Aquatic Life Warm Water 1, W2 = Aquatic Life Warm Water 2, RE = Recreation Existing, RNS = Recreation Not Suitable, WS = Water Supply, and AG = Agriculture.

<sup>4</sup> Key to Parameters: Se = selenium and Fe = iron.

<sup>5</sup> Key to Sources: M = mine lands, UK = unknown, and N/A = Not Assessed.

<sup>6</sup> Key to TMDL Status: Comp = completed but not yet approved, App = approved, L = low priority, M = medium priority, and H = high priority.

<sup>7</sup> UP = Use Protected.

<sup>8</sup> Upper Yampa Segment 13d is only counted once.

<sup>9</sup> Upper Yampa Segment 13d has at least one impairment for the entire segment; therefore, the stream miles for the entire segment have been counted once.

Sources: WQCC 2010c; WQCD 2010a, appendices A to D.

Exhibit 8-42. Upper Yampa River Sub-Basin Impairments by Lake/Reservoir Segments<sup>1</sup>

| Lake Segment (COUCYA)            | Lake Acres | Were All Uses Attained in 2010? | Segment Portion                   | Portion Acres | Use(s) Not Attained <sup>2</sup> |    |    |    |    |     |    |    | Designation | Parameter(s) Causing Impairments <sup>3</sup> | Source <sup>4</sup> | TMDL Development Status <sup>5</sup> |   |   |
|----------------------------------|------------|---------------------------------|-----------------------------------|---------------|----------------------------------|----|----|----|----|-----|----|----|-------------|---|---------------------|--------------------------------------|---|---|
|                                  |            |                                 |                                   |               | C1                               | C2 | W1 | W2 | RE | RNS | WS | AG |             | Hg  |                     | L                                    | M | H |
|                                  |            |                                 |                                   |               |                                  |    |    |    |    |     |    |    |             |   |                     |                                      |   |   |
| 2b                               | 17,992.40  | N                               | Elkhead Reservoir, Lake Catamount | 14,310.90     | •                                |    |    |    |    |     |    |    |             | •   | N/A                 |                                      |   | • |
| <b>Total Segments Impaired</b>   |            |                                 | <b>1</b>                          |               |                                  |    |    |    |    |     |    |    |             |   |                     |                                      |   |   |
| <b>Total Lake Acres Impaired</b> |            |                                 | <b>14,310.90</b>                  |               |                                  |    |    |    |    |     |    |    |             |   |                     |                                      |   |   |

<sup>1</sup> The table includes all segments that are not attaining one or more of their classified uses as presented in appendix B of the 2010 Integrated Report. This can include segments for which a TMDL has been developed (which means the segment is not listed on the 2010 CWA section 303(d) list (Regulation No. 93) (WQCC 2010c; WQCD 2010a). For these segments it likely means that the full effects of TMDL implementation are yet to be realized and the segment has yet to attain its classified uses. The cells for “parameters causing impairments,” “source(s),” and “TMDL development status” are left blank in these cases.

<sup>2</sup> Key to Classified Uses: C1 = Aquatic Life Cold Water 1, C2 = Aquatic Life Cold Water 2, W1 = Aquatic Life Warm Water 1, W2 = Aquatic Life Warm Water 2, RE = Recreation Existing, RNS = Recreation Not Suitable, WS = Water Supply, and AG = Agriculture.

<sup>3</sup> Key to Parameters: Hg = mercury.

<sup>4</sup> Key to Sources: N/A = Not Assessed.

<sup>5</sup> Key to TMDL Status: Comp = completed but not yet approved, App = approved, L = low priority, M = medium priority, and H = high priority.

Sources: WQCC 2010c; WQCD 2010a, appendices A to D.

Exhibit 8-43. Lower Yampa/Green River Sub-Basin Impairments by Stream Segment<sup>1</sup>

| Stream Segment<br>(COLCLY)  | Stream<br>Miles | Were All Uses<br>Attained in 2010? | Segment<br>Portion | Portion<br>Miles <sup>2</sup> | Use(s) Not Attained <sup>3</sup> |    |    |    |    |     |    |    | Desig | Parameter(s) Causing<br>Impairments <sup>4</sup> |    | Source <sup>5</sup> | TMDL Status <sup>6</sup> |     |                 |   |   |
|-----------------------------|-----------------|------------------------------------|--------------------|-------------------------------|----------------------------------|----|----|----|----|-----|----|----|-------|--|----|---------------------|--------------------------|-----|-----------------|---|---|
|                             |                 |                                    |                    |                               | C1                               | C2 | W1 | W2 | RE | RNS | WS | AG |       | Se   | Fe |                     | Comp                     | App | To Be Developed |   |   |
|                             |                 |                                    |                    |                               |                                  |    |    |    |    |     |    |    |       |  |    |                     |                          |     | L               | M | H |
| 2                           | 168.98          | N                                  | all                | 168.98                        |                                  |    | •  |    |    |     |    |    |       | •  | UK |                     |                          |     |                 | • |   |
| 5                           | 36.9            | N                                  | all                | 36.90                         |                                  |    | •  |    |    |     |    |    | •     |  | UK |                     |                          | •   |                 |   |   |
| Total Segments Impaired     |                 |                                    | 2                  |                               |                                  |    |    |    |    |     |    |    |       |  |    |                     |                          |     |                 |   |   |
| Total Stream Miles Impaired |                 |                                    | 205.88             |                               |                                  |    |    |    |    |     |    |    |       |  |    |                     |                          |     |                 |   |   |

<sup>1</sup> The table includes all segments that are not attaining one or more of their classified uses as presented in appendix A of the 2010 Integrated Report. This can include segments for which a TMDL has been developed (which means the segment is not listed on the 2010 CWA section 303(d) list (Regulation No. 93) (WQCC 2010c; WQCD 2010a). For these segments it likely means that the full effects of TMDL implementation are yet to be realized and the segment has yet to attain its classified uses. The cells for “parameters causing impairments,” “source(s),” and “TMDL development status” are left blank in these cases.

<sup>2</sup> Totals may not add due to rounding. Note that lake acres have not been totaled.

<sup>3</sup> Key to Classified Uses: C1 = Aquatic Life Cold Water 1, C2 = Aquatic Life Cold Water 2, W1 = Aquatic Life Warm Water 1, W2 = Aquatic Life Warm Water 2, RE = Recreation Existing, RNS = Recreation Not Suitable, WS = Water Supply, and AG = Agriculture.

<sup>4</sup> Key to Parameters: Se = selenium and Fe = iron.

<sup>5</sup> Key to Sources: UK = unknown.

<sup>6</sup> Key to TMDL Status: Comp = completed but not yet approved, App = approved, L = low priority, M = medium priority, and H = high priority.

Sources: WQCC 2010c; WQCD 2010a, appendices A to D.

Exhibit 8-44. White River Sub-Basin Impairments by Stream Segment<sup>1</sup>

| Stream Segment (COLCWH)            | Stream Miles | Were All Uses Attained in 2010? | Segment Portion                     | Portion Miles <sup>2</sup> | Use(s) Not Attained <sup>3</sup> |    |    |    |    |     |    |    | Desig | Parameter(s) Causing Impairments <sup>4</sup> |          | Source <sup>5</sup> | TMDL Development Status <sup>6</sup> |   |   |
|------------------------------------|--------------|---------------------------------|-------------------------------------|----------------------------|----------------------------------|----|----|----|----|-----|----|----|-------|---|----------|---------------------|--------------------------------------|---|---|
|                                    |              |                                 |                                     |                            | C1                               | C2 | W1 | W2 | RE | RNS | WS | AG |       | Se  | Sediment |                     | L                                    | M | H |
|                                    |              |                                 |                                     |                            |                                  |    |    |    |    |     |    |    |       |   |          |                     |                                      |   |   |
| 9d                                 | 58.60        | N                               | all                                 | 58.60                      |                                  | •  |    |    |    |     |    |    |       | •   |          | UK                  | •                                    |   |   |
| 22                                 | 973.80       | N                               | West Evacuation Wash, Douglas Creek | 33.60                      |                                  |    |    | •  |    |     |    |    |       |   | •        | UK                  | •                                    |   |   |
| <b>Total Segments Impaired</b>     |              |                                 | <b>2</b>                            |                            |                                  |    |    |    |    |     |    |    |       |   |          |                     |                                      |   |   |
| <b>Total Stream Miles Impaired</b> |              |                                 | <b>92.20</b>                        |                            |                                  |    |    |    |    |     |    |    |       |   |          |                     |                                      |   |   |

<sup>1</sup> The table includes all segments that are not attaining one or more of their classified uses as presented in appendix A of the 2010 Integrated Report. This can include segments for which a TMDL has been developed (which means the segment is not listed on the 2010 CWA section 303(d) list (Regulation No. 93) (WQCC 2010c; WQCD 2010a). For these segments it likely means that the full effects of TMDL implementation are yet to be realized and the segment has yet to attain its classified uses. The cells for “parameters causing impairments,” “source(s),” and “TMDL development status” are left blank in these cases.

<sup>2</sup> Totals may not add due to rounding. Note that lake acres have not been totaled.

<sup>3</sup> Key to Classified Uses: C1 = Aquatic Life Cold Water 1, C2 = Aquatic Life Cold Water 2, W1 = Aquatic Life Warm Water 1, W2 = Aquatic Life Warm Water 2, RE = Recreation Existing, RNS = Recreation Not Suitable, WS = Water Supply, and AG = Agriculture.

<sup>4</sup> Key to Parameters: Se = selenium .

<sup>5</sup> Key to Sources: UK = unknown.

<sup>6</sup> Key to TMDL Status: Comp = completed but not yet approved, App = approved, L = low priority, M = medium priority, and H = high priority.

Sources: WQCC 2010c; WQCD 2010a, appendices A to D.



Exhibit 8-45. Green River Basin Summary of Waterbody Segments Listed for Further Monitoring and Evaluation

| Number of Segments <sup>1</sup>                          | No. of Segments as Percent of Total Segments in Sub-Basin or Basin | Parameters of Potential Concern |          |                  |             |      |                  |         |                |      |        |             |          |    |
|--|--|---------------------------------|----------|------------------|-------------|------|------------------|---------|----------------|------|--------|-------------|----------|----|
|  |  | Manganese                       | Selenium | Dissolved Oxygen | Temperature | Zinc | Iron (dissolved) | Mercury | <i>E. coli</i> | Lead | Copper | Iron (Trec) | Sediment | pH |
| Upper Yampa River (25 total segments in sub-basin)       |  |                                 |          |                  |             |      |                  |         |                |      |        |             |          |    |
| 9  | 36%  | 2                               | 1        | 2                | 1           | 1    | 1                | 1       | 2              | 1    | 1      | 0           | 0        | 0  |
| Lower Yampa/Green River (42 total segments in sub-basin) |  |                                 |          |                  |             |      |                  |         |                |      |        |             |          |    |
| 7  | 17%  | 0                               | 3        | 0                | 0           | 2    | 0                | 0       | 2              | 0    | 2      | 3           | 2        | 0  |
| White River (33 segments in sub-basin)                   |  |                                 |          |                  |             |      |                  |         |                |      |        |             |          |    |
| 6  | 18%  | 0                               | 1        | 0                | 0           | 1    | 0                | 0       | 1              | 0    | 2      | 1           | 0        | 1  |
| Basin-Wide (100 total segments in basin)                 |  |                                 |          |                  |             |      |                  |         |                |      |        |             |          |    |
| 22   | 22%  | 2                               | 5        | 2                | 1           | 4    | 1                | 1       | 5              | 1    | 5      | 4           | 2        | 1  |

<sup>1</sup> Segments include combined stream and lake/reservoir segments.

Sources: WQCC 2010c; WQCD 2010a, appendix D.

Exhibit 8-46. Upper Yampa River Sub-Basin Waterbody Segments Listed for Further Monitoring and Evaluation

| Segment No.<br>(COUCYA)                              | Segment Portion(s)  | Parameters of Concern and Source(s) if Known |          |                  |             |      |                  |         |                |      |        |
|--|---|--|----------|------------------|-------------|------|------------------|---------|----------------|------|--------|
|  |   | Manganese                                    | Selenium | Dissolved Oxygen | Temperature | Zinc | Iron (dissolved) | Mercury | <i>E. coli</i> | Lead | Copper |
| 2a   | Yampa River below Stagecoach Reservoir                    | •  | •        |                  |             |      |                  |         |                |      |        |
| 2b   | all   |  |          | •                |             |      |                  |         |                |      |        |
| 2c   | all   |  |          |                  | •           |      |                  |         |                |      |        |
| 3  | Walton Creek  | •  |          |                  |             |      |                  |         |                |      |        |
| 3  | Little Morrison Creek                                     |  |          |                  |             | •    | •                |         |                |      |        |
| 4  | all   |  |          | •                |             |      |                  |         |                |      |        |
| 8  | Lost Dog Creek  |  |          |                  |             |      |                  | •       |                |      |        |
| 13b  | Fish Creek  |  |          |                  |             |      |                  |         | •              |      |        |
| 13d  | Dry Creek below Routt County Road 53 (Sec. 22, T6N, R88W) |  |          |                  |             |      |                  |         | •              | •    |        |
| 18   | all   |  |          |                  |             |      |                  |         |                |      | •      |
| Total Segments with One or More Portions on M&E List | 9   | 2  | 1        | 2                | 1           | 1    | 1                | 1       | 2              | 1    | 1      |
| Total as Percent of All Segments in Sub-basin, n=25  | 36%   | 8%   | 4%       | 8%               | 4%          | 4%   | 4%               | 4%      | 8%             | 4%   | 4%     |

Sources: WQCC 2010c; WQCD 2010a, appendix D.

**Exhibit 8-47. Lower Yampa/Green River Sub-Basin Waterbody Segments Listed for Further Monitoring and Evaluation**

| Segment No.<br>(COLCLY)   | Segment Portion(s) | Parameters of Concern and Source(s) if Known |        |      |          |      |               |
|---|--------------------|--|--------|------|----------|------|---------------|
|   |                    | Sediment                                     | Copper | Iron | Selenium | Zinc | <i>E coli</i> |
| 2   | all                | •  |        |      |          |      |               |
| 3c  | Stinking Gulch     |  | •      | •    | •        | •    |               |
| 3e  | Wilson Creek       |  |        |      | •        |      |               |
| 7   | all                |  | •      |      |          | •    |               |
| 16  | all                | •  |        |      |          |      |               |
| 18  | all                |  |        | •    | •        |      | •             |
| 22c   | all                |  |        | •    |          |      | •             |
| Total Segments with<br>One or More<br>Portions on M&E List          | 7                  | 2  | 2      | 3    | 3        | 2    | 2             |
| <i>Total as Percent of<br/>All Segments in Sub-<br/>basin, n=42</i> | 17%                | 5%   | 5%     | 7%   | 7%       | 5%   | 5%            |

Sources: WQCC 2010c; WQCD 2010a, appendix D.

**Exhibit 8-48. White River Sub-Basin Waterbody Segments Listed for Further Monitoring and Evaluation**

| Segment No.<br>(COLCWH)                                    | Segment Portion(s)        | Parameters of Concern and Source(s) if Known |      |          |    |                |      |
|--|---------------------------|--|------|----------|----|----------------|------|
|  |                           | Copper                                       | Zinc | Selenium | pH | <i>E. coli</i> | Iron |
| 7  | White River, below Meeker | •  |      |          |    |                |      |
| 9a   | Strawberry Creek          | •  | •    |          |    |                |      |
| 10b  | Coal Creek                |  |      | •        |    |                |      |
| 11   | Rio Blanco Reservoir      |  |      |          | •  |                |      |
| 16   | Ryan Gulch                |  |      |          |    | •              |      |
| 23   | East Douglas Creek        |  |      |          |    |                | •    |
| Total Segments with One or More Portions on M&E List       | 6                         | 2  | 1    | 1        | 1  | 1              | 1    |
| <i>Total as Percent of All Segments in Sub-basin, n=33</i> | 18%                       | 6%   | 3%   | 3%       | 3% | 3%             | 3%   |

Sources: WQCC 2010c; WQCD 2010a, appendix D.

**Exhibit 8-49. in text**

**Exhibit 8-50. in text**

**Exhibit 8-51. in text**

**Exhibit 8-52. in text**

Exhibit 8-53. Upper Yampa River Sub-Basin Point Source Projects and Scheduled Improvements<sup>1</sup>

| County                         | Permit No. | Permit Type, Expiration Date & Status <sup>2</sup> | Facility or Authority Project Name Address (if available)                               | Source Info <sup>3</sup> | IUP <sup>4</sup> No. | Applicable IUP Appendices <sup>5</sup> | Project Type <sup>6</sup> | Project Description   | Estimated Cost | Population to Benefit from Project |
|--------------------------------|------------|--|---|--------------------------|----------------------|--|---------------------------|---|----------------|------------------------------------|
| Moffat                         | G900010    | NPDES General 11/30/2006 Admin. Continued          | Breeze Water Outfall No. 001 8 Miles Southeast of Town Craig, CO                        | Envirofacts              |                      |  |                           |   |                |                                    |
| <b>Total for Moffat County</b> |            |  |   |                          |                      |  |                           |   | <b>\$0</b>     |                                    |
| Routt                          | 0032638    | NPDES 6/30/2012 Effective                          | Edna Mine 26990 Colorado Highway 131 Oak Creek, CO                                      | Envirofacts              |                      |  |                           |   |                |                                    |
|                                | 0036684    | NPDES 4/30/2012 Effective                          | Fish Creek Tipple 29515 Routt County Road #27 Oak Creek, CO                             | Envirofacts              |                      |  |                           |   |                |                                    |
|                                | 0042161    | NPDES 6/30/2012 Effective                          | Foidel Creek Mine 29515 Routt County Road 27 Oak Creek, CO                              | Envirofacts              |                      |  |                           |   |                |                                    |
|                                | 0040959    | NPDES 2/28/2006 Admin. Continued                   | Hayden, Town of 1200 West Jefferson Avenue Hayden, CO                                   | CWNS and Envirofacts     | 030134W              | B and C                                | WWT                       | New Wastewater Treatment Plant; Collection System and/or Interceptor Construction or Rehabilitation   | \$4,700,000    | 1,814                              |
|                                | 0047449    | NPDES 3/31/2013 Effective                          | Milner Community WWTF <sup>7</sup> Routt County, CO                                     | Envirofacts              |                      |  |                           |   |                |                                    |
|                                | 0027154    | NPDES 8/31/2012 Effective                          | Mines 1&2 And Eckman Park Mine 29515 Routt County Road #27 Oak Creek, CO                | Envirofacts              |                      |  |                           |   |                |                                    |
|                                | 0022969    | NPDES 7/31/2013 Effective                          | Morrison Creek Metro Water and Sanitation District 24490 Uncompahgre Road Oak Creek, CO | CWNS and Envirofacts     | 030190W              | B                                      | WWT                       | New Wastewater Treatment Plant; Collection System and/or Interceptor Construction or Rehabilitation; New or Improvements to Biosolids Handling Facility | \$3,500,000    | 800                                |
|                                | G650049    | NPDES General 10/19/2012 Effective                 |   |                          | 090058W              | B                                      | WWT                       | Collection System and/or Interceptor Construction or Rehabilitation; Eliminate ISDS <sup>8</sup>  | \$3,000,000    | 800                                |
|                                | 0041106    | NPDES 7/31/2006 Admin. Continued                   | Oak Creek, Town of 129 Nancy Crawford Boulevard Oak Creek, CO                           | CWNS and Envirofacts     | 030200W              | B                                      | WWT                       | Improvement / Expansion of Wastewater Treatment Plant; Collection System and/or Interceptor Construction or Rehabilitation                              | \$4,645,571    | 900                                |



| County                        | Permit No.        | Permit Type, Expiration Date & Status <sup>2</sup> | Facility or Authority Project Name Address (if available)   | Source Info <sup>3</sup> | IUP <sup>4</sup> No. | Applicable IUP Appendices <sup>5</sup> | Project Type <sup>6</sup> | Project Description  | Estimated Cost      | Population to Benefit from Project |
|-------------------------------|-------------------|--|---|--------------------------|----------------------|--|---------------------------|--|---------------------|------------------------------------|
| Routt                         | G589026 (0582020) | NPDES General 10/31/2010 Effective                 | Phippsburg WWTP <sup>9</sup>  | CWNS                     | 060010W              | B                                      | WWT                       | Improvement / Expansion of Wastewater Treatment Plant  | \$330,000           | 200                                |
|                               | -                 | -  | Routt County/Hahn's Peak  | CWNS                     | 030237W              | B and C                                | WWT                       | New Wastewater Treatment Plant; Collection System and/or Interceptor Construction or Rehabilitation; Green Infrastructure, Water Efficiency, Energy Efficiency                 | \$2,000,000         | 150                                |
|                               | 0047449           | NPDES 3/31/2013 Effective                          | Routt County - Milner   | CWNS                     | 080031W              | B and C                                | WWT                       | Improvement / Expansion of Wastewater Treatment Plant; Collection System and/or Interceptor Construction or Rehabilitation   | \$360,000           | 220                                |
|                               | 0000221           | NPDES 10/31/2011 Effective                         | Seneca Mine Complex 36600 Routt County Road #27 Hayden, CO  | Envirofacts              |                      |  |                           |  |                     |                                    |
|                               | 0035556           | NPDES 7/31/2012 Effective                          | Steamboat Lake Water and Sanitation District Approximately 1.8 Miles North of Town Routt County, CO | CWNS and Envirofacts     | 030259W (080029W)    | B and C                                | WWT                       | Collection System and/or Interceptor Construction or Rehabilitation  | \$684,000           | 300                                |
|                               | G650046           | NPDES General 10/19/2012 Effective                 | Steamboat Springs, City of 39565 Routt County Road 33 Steamboat Springs, CO                         | Envirofacts              | 090135W              | B                                      | StW                       | Stormwater Project   | \$1,350,000         | 6,000                              |
|                               | 0020834           | NPDES 9/30/2012 Effective                          |   |                          | 090099W              | B                                      | WWT                       | Improvement / Expansion of Wastewater Treatment Plant; Collection System and/or Interceptor Construction or Rehabilitation; New or Improvements to Biosolids Handling Facility | \$13,270,000        | 6,000                              |
|                               | -                 | -  | Timbers Water and Sanitation District   | CWNS                     | 030272W              | B and C                                | WWT                       | Improvement / Expansion of Wastewater Treatment Plant  | \$30,000            | 140                                |
|                               | G650161           | NPDES General 10/19/2012 Effective                 | Twin Landfill Corporation 20650 County Road 295 Routt County, CO                                    | Envirofacts              |                      |  |                           |  |                     |                                    |
|                               | 0031062           | NPDES 5/31/2010 Effective                          | Whiteman School 42605 County Road 36 Steamboat Springs, CO  | Envirofacts              |                      |  |                           |  |                     |                                    |
|                               | 0030635           | NPDES 3/31/2010 Effective                          | Yampa, Town of 56 Lincoln Avenue Yampa, CO  | Envirofacts              |                      |  |                           |  |                     |                                    |
| <b>Total for Routt County</b> |                   |  |   |                          |                      |  |                           |  | <b>\$33,869,571</b> |                                    |

Total Estimate Cost for All Projects

\$33,869,571

<sup>1</sup> Note this table only identifies NPDES facilities as contained in the publicly available data sources evaluated. Therefore, it should not be considered an all-inclusive list.

<sup>2</sup> Admin. Continued = Administratively Continued (permit status). For a review of the various NPDES permit types issued by Colorado, consult chapter 3 of the SWQMP.

<sup>3</sup> Sources: USEPA 2010a, 2010c; WQCD 2010b.

<sup>4</sup> IUP = Intended Use Plan (WQCD 2010b).

<sup>5</sup> The 2010 IUP contains several appendices containing listings of projects. Appendix B is a list of the current construction needs for all identified eligible water quality projects (i.e., project eligibility list) including point source treatment, nonpoint source, stormwater, and source water assessment projects. Appendix C lists projects that are likely to be funded with Water Pollution Control Revolving Funds (WPCRF) loans in 2010. For those projects included in appendix A, the loan value is sometimes lower than the estimated cost. Only the estimated cost as shown in appendix B is shown in this table.

<sup>6</sup> Project type categories include the following: WWT = advanced or secondary wastewater treatment, including infiltration and inflow correction; and StW = stormwater.

<sup>7</sup> WWTF = wastewater treatment facility.

<sup>8</sup> ISDS = individual sewage disposal systems.

<sup>9</sup> WWTP = wastewater treatment plant.

Exhibit 8-54. Lower Yampa/Green River Sub-Basin Point Source Projects and Scheduled Improvements<sup>1</sup>

| County                                      | Permit No. | Permit Type, Expiration Date & Status <sup>2</sup> | Facility or Authority Project Name Address (if available)                             | Source Info <sup>3</sup> | IUP <sup>4</sup> No. | Applicable IUP Appendices <sup>5</sup> | Project Type <sup>6</sup> | Project Description                                | Estimated Cost     | Population to Benefit from Project |
|---|------------|--|---|--------------------------|----------------------|--|---------------------------|--|--------------------|------------------------------------|
| Moffat                                      | 0040037    | NPDES 7/31/2006 Admin. Continued                   | Craig City of 2301 West 1st St. Craig, CO   | CWNS and Envirofacts     | 080021W              | B                                      | WWT                       | New or Improvements to Biosolids Handling Facility | \$1,000,000        | 9,400                              |
|   | G650055    | NPDES General 10/19/2012 Effective                 |   |                          |                      |  |                           |  |                    |                                    |
|   | 0034142    | NPDES 3/31/2007 Admin. Continued                   | Eagle Mine Complex 1030 County Road 107 Craig, CO                                     | Envirofacts              |                      |  |                           |  |                    |                                    |
|   | 0000051    | NPDES 6/30/2010 Effective                          | Iles Dome Unit Production Facility Approximately 20 Miles Southwest of Town Craig, CO | Envirofacts              |                      |  |                           |  |                    |                                    |
|   | G900011    | NPDES General                                      | Lay Creek Coalbed Methane Project 12 Miles West of Town Craig, CO                     | Envirofacts              |                      |  |                           |  |                    |                                    |
|   | R109629    | NPDES  | Lay Creek Coalbed Methane Project SH 40A, Northwest of Craig Moffat County, CO        | Envirofacts              |                      |  |                           |  |                    |                                    |
|   | 0032115    | NPDES 5/31/2009 Effective                          | Trapper Mine 6.5 Miles Southwest of Town on State Highway 13 Craig, CO                | Envirofacts              |                      |  |                           |  |                    |                                    |
| <b>Total for Moffat County</b>              |            |  |   |                          |                      |  |                           |  | <b>\$1,000,000</b> |                                    |
| <b>Total Estimate Cost for All Projects</b> |            |  |   |                          |                      |  |                           |  | <b>\$1,000,000</b> |                                    |

<sup>1</sup> Note this table only identifies NPDES facilities as contained in the publicly available data sources evaluated. Therefore, it should not be considered an all-inclusive list.

<sup>2</sup> Admin. Continued = Administratively Continued (permit status). For a review of the various NPDES permit types issued by Colorado, consult chapter 3 of the SWQMP.

<sup>3</sup> Sources: USEPA 2010a, 2010c; WQCD 2010b.

<sup>4</sup> IUP = Intended Use Plan (WQCD 2010b).

<sup>5</sup> The 2010 IUP contains several appendices containing listings of projects. Appendix B is a list of the current construction needs for all identified eligible water quality projects (i.e., project eligibility list) including point source treatment, nonpoint source, stormwater, and source water assessment projects. appendix C lists projects that are likely to be funded with Water Pollution Control Revolving Funds (WPCRF) loans in 2010. For those projects included in appendix A, the loan value is sometimes lower than the estimated cost. Only the estimated cost as shown in appendix B is shown in this table.

<sup>6</sup> Project type categories include the following: WWT = advanced or secondary wastewater treatment, including infiltration and inflow correction.

Exhibit 8-55. White River Sub-Basin Point Source Projects and Scheduled Improvements<sup>1</sup>

| County                                      | Permit No.           | Permit Type, Expiration Date & Status <sup>2</sup> | Facility or Authority Project Name Address (if available)                           | Source Info <sup>3</sup> | IUP <sup>4</sup> No. | Applicable IUP Appendices <sup>5</sup> | Project Type <sup>6</sup> | Project Description   | Estimated Cost      | Population to Benefit from Project |
|---|----------------------|--|---|--------------------------|----------------------|--|---------------------------|---|---------------------|------------------------------------|
| Garfield                                    | 0047716              | NPDES Pending                                      | Mesa Temp Living Quarters WWTF <sup>7</sup><br>8801 Sprague Gulch Road<br>Rifle, CO | Envirofacts              |                      |  |                           |   |                     |                                    |
| <b>Total for Garfield County</b>            |                      |  |   |                          |                      |  |                           |   | <b>\$0</b>          |                                    |
| Moffat                                      | 0040509              | NPDES  | Dinosaur WWTP <sup>8</sup>  | CWNS                     | 090124W              | B and C                                | WWT                       | Improvement / Expansion of Wastewater Treatment Plant; Collection System and/or Interceptor Construction or Rehabilitation  | \$500,000           | 320                                |
| <b>Total for Moffat County</b>              |                      |  |   |                          |                      |  |                           |   | <b>\$500,000</b>    |                                    |
| Rio Blanco                                  | 0045161              | NPDES<br>2/28/2010<br>Effective                    | Colowyo Mine<br>5731 South Highway 13<br>Meeker, CO                                 | Envirofacts              |                      |  |                           |   |                     |                                    |
|   | 0038024              | NPDES<br>9/30/2012<br>Effective                    | Deserado Mine<br>9 Miles Northeast of Town<br>Rangely, CO                           | Envirofacts              |                      |  |                           |   |                     |                                    |
|   | 0047139              | NPDES<br>12/31/2010<br>Effective                   | Meeker Sanitation District<br>1150 Market Street<br>Meeker, CO                      | CWNS and<br>Envirofacts  | 050036W              | B                                      | WWT                       | Improvement / Expansion of Wastewater Treatment Plant; Collection System and/or Interceptor Construction or Rehabilitation; Elimination of Combined Sewer / Sanitary Sewer Overflow | \$11,399,000        | 2,500                              |
|   | G650053<br>(G584042) | NPDES General<br>10/19/2012<br>Effective           |   |                          |                      |  |                           |   |                     |                                    |
|   | G650104<br>(0589088) | NPDES General                                      | Rangely, Town of<br>Rangely, CO   | Envirofacts              | 090126W              | B and C                                | WWT                       | Improvement / Expansion of Wastewater Treatment Plant; Green Infrastructure, Water Efficiency, Energy Efficiency  | \$460,000           | 2,100                              |
|   | G584044              | NPDES General<br>12/31/2004<br>Admin. Continued    | Rangely WWTP  | CWNS                     | 030226W              | B                                      | WWT                       | Improvement / Expansion of Wastewater Treatment Plant; Collection System and/or Interceptor Construction or Rehabilitation; New or Improvements to Biosolids Handling Facility      | \$300,000           | 2,200                              |
| <b>Total for Rio Blanco County</b>          |                      |  |   |                          |                      |  |                           |   | <b>\$12,159,000</b> |                                    |
| <b>Total Estimate Cost for All Projects</b> |                      |  |   |                          |                      |  |                           |   | <b>\$12,659,000</b> |                                    |

<sup>1</sup> Note this table only identifies NPDES facilities as contained in the publicly available data sources evaluated. Therefore, it should not be considered an all-inclusive list.

<sup>2</sup> Admin. Continued = Administratively Continued (permit status). For a review of the various NPDES permit types issued by Colorado, consult chapter 3 of the SWQMP.

<sup>3</sup> Sources: USEPA 2010a, 2010c; WQCD 2010b.

<sup>4</sup> IUP = Intended Use Plan (WQCD 2010b)

<sup>5</sup> The 2010 IUP contains several appendices containing listings of projects. Appendix B is a list of the current construction needs for all identified eligible water quality projects (i.e., project eligibility list) including point source treatment, nonpoint source, stormwater, and source water assessment projects. Appendix C lists projects that are likely to be funded with Water Pollution Control Revolving Funds (WPCRF) loans in 2010. For those projects included in appendix A, the loan value is sometimes lower than the estimated cost. Only the estimated cost as shown in appendix B is shown in this table.

<sup>6</sup> Project type categories include the following: WWT = advanced or secondary wastewater treatment, including infiltration and inflow correction.

<sup>7</sup> WWTF = wastewater treatment facility.

<sup>8</sup> WWTP = wastewater treatment plant.