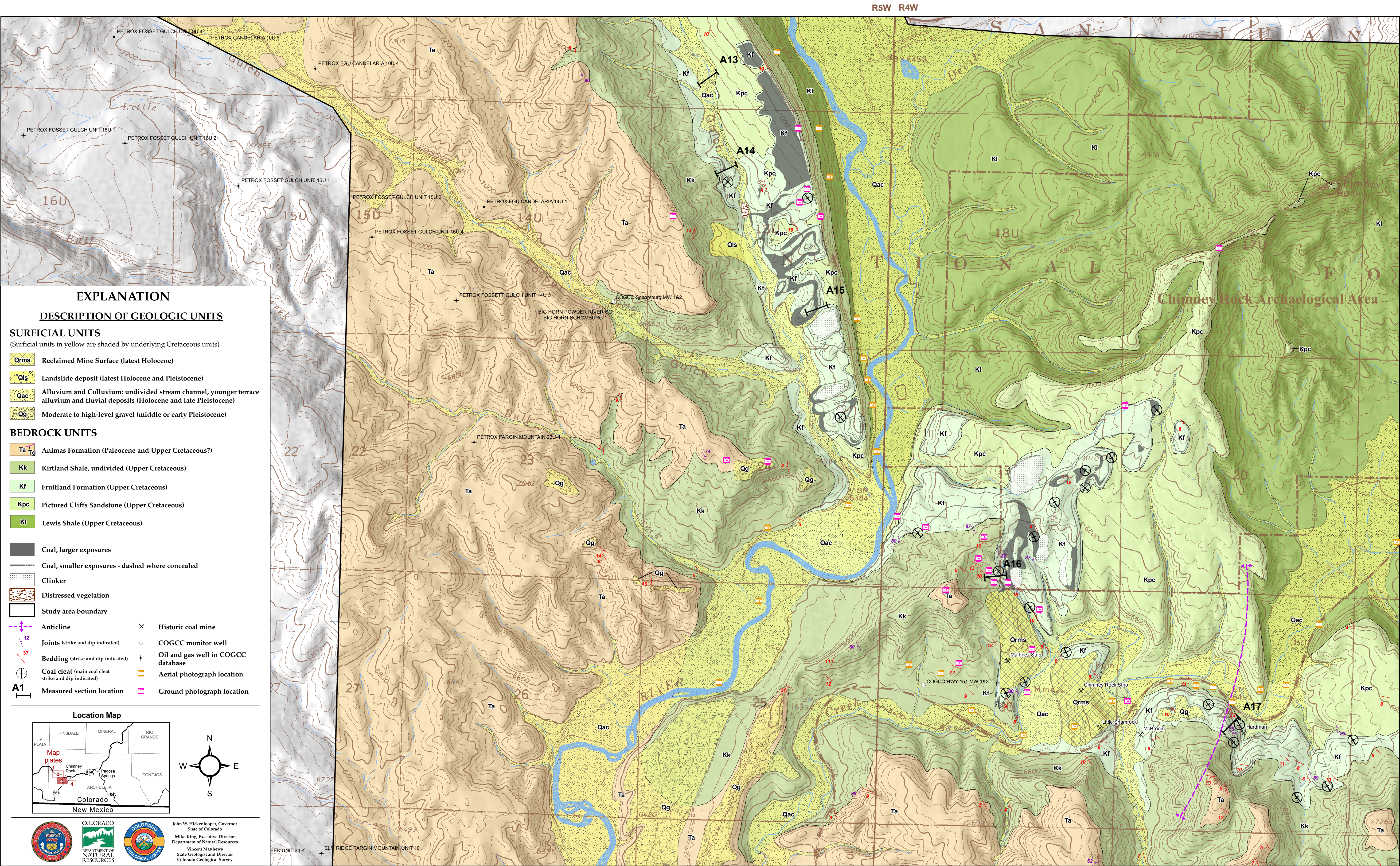


Geologic Map and Coal Bed Stratigraphy of the Fruitland Formation in western Archuleta County, Colorado
Plate 3 of 4



Basemap data sources
Archuleta County Information Systems Department: Chimney Rock Archaeological Area boundary
Colorado Department of Local Affairs: State border, county lines
Colorado Department of Transportation: Roadways
Colorado Oil and Gas Conservation Commission: Well locations
US Bureau of Land Management: PLSS grid
US Geological Survey: Topographic map base, digital elevation model (DEM)

DISCLAIMER: TOPOGRAPHIC BASEMAP IS ACCURATE ONLY TO A SCALE OF 1:24,000

The geologic mapping and data presented on this map were created and are shown here at a scale of 1:12,000; however, the USGS topographic base presented on this map was originally created at a scale of 1:24,000 and is shown here only for the purpose of providing general locational information about the mapped area.

ISBN: 978-1-884216-21-3