

RESULTS: SOUND LEVELS

CDOT filename:SEISNA
~~its 110511~~

RESULTS: SOUND LEVELS

PROJECT/CONTRACT:

RUN:

BARRIER DESIGN:

ATMOSPHERICS:

Receiver

110511 Traffic RVWS

Supplemental EIS US-160/550 Grandview

26 May 2011

TNM 2.5

Calculated with TNM 2.5

Supplemental EIS US-160/550 Grandview
 2030 No Action (110511 traffic)
 INPUT HEIGHTS
 68 deg F, 50% RH

Average pavement type shall be used unless
 a State highway agency substantiates the use
 of a different type with approval of FHWA.

Name	No.	#DUs	Existing LAeq1h dBa	No Barrier		Increase over existing Calculated dB	Sub'l Inc dB	Type Impact	With Barrier		Noise Reduction		Calculated minus Goal
				Calculated dBa	Crit'n dBa				Calculated dB	Sub'l Inc dB	Calculated dB	Goal dB	
25	3	5	56.0	62.1	66	6.1	10	---	62.1	0.0	7	-7.0	
29	4	3	53.2	63.6	66	10.4	10	Sub'l Inc	63.6	0.0	7	-7.0	
29a	5	4	59.8	72.1	66	12.3	10	Both	72.1	0.0	7	-7.0	
30	6	2	53.9	63.8	66	9.9	10	---	63.8	0.0	7	-7.0	
34	8	2	54.8	59.8	66	5.0	10	---	59.8	0.0	7	-7.0	
37	10	1	53.7	67.1	66	13.4	10	Both	67.1	0.0	7	-7.0	
C38	11	1	54.2	68.4	71	14.2	10	Sub'l Inc	68.4	0.0	7	-7.0	
C39	12	1	60.2	73.0	71	12.8	10	Both	73.0	0.0	7	-7.0	
C40	13	1	55.9	69.9	71	14.0	10	Sub'l Inc	69.9	0.0	7	-7.0	
41	14	1	53.0	66.1	66	13.1	10	Both	66.1	0.0	7	-7.0	
42	15	1	51.9	64.2	66	12.3	10	Sub'l Inc	64.2	0.0	7	-7.0	
43	16	1	56.3	70.3	66	14.0	10	Both	70.3	0.0	7	-7.0	
52	20	1	56.7	67.5	66	10.8	10	Both	67.5	0.0	7	-7.0	
55	23	1	51.7	64.2	66	12.5	10	Sub'l Inc	64.2	0.0	7	-7.0	
56	24	3	50.1	63.6	66	13.5	10	Sub'l Inc	63.6	0.0	7	-7.0	
C57	25	1	56.1	68.7	71	12.6	10	Sub'l Inc	68.7	0.0	7	-7.0	
58	26	3	53.0	67.3	66	14.3	10	Both	67.3	0.0	7	-7.0	
63	31	1	51.5	65.7	66	14.2	10	Sub'l Inc	65.7	0.0	7	-7.0	
65	33	1	50.5	64.7	66	14.2	10	Sub'l Inc	64.7	0.0	7	-7.0	
66	34	1	57.8	69.5	66	11.7	10	Both	69.5	0.0	7	-7.0	
67	35	1	60.0	71.4	66	11.4	10	Both	71.4	0.0	7	-7.0	
70	38	6	56.0	66.2	66	10.2	10	Both	66.2	0.0	7	-7.0	
71	39	4	50.9	66.3	66	15.4	10	Both	66.3	0.0	7	-7.0	

RESULTS: SOUND LEVELS

Supplemental EIS US160/550 Grandview

72		40	3	57.0	69.9	66	12.9	10	Both	69.9	0.0	7	-7.0
73		41	2	49.9	63.2	66	13.3	10	Sub'l Inc	63.2	0.0	7	-7.0
74		42	1	55.1	67.7	66	12.6	10	Both	67.7	0.0	7	-7.0
C75		43	1	52.4	64.6	71	12.2	10	Sub'l Inc	64.6	0.0	7	-7.0
C79		47	1	53.8	64.5	71	10.7	10	Sub'l Inc	64.5	0.0	7	-7.0
81		49	2	57.8	69.1	66	11.3	10	Both	69.1	0.0	7	-7.0
82		50	1	60.3	70.5	66	10.2	10	Both	70.5	0.0	7	-7.0
84		52	1	58.9	67.0	66	8.1	10	Snd Lvl	67.0	0.0	7	-7.0
85		53	1	60.8	67.3	66	6.5	10	Snd Lvl	67.3	0.0	7	-7.0
87		55	1	59.7	69.8	66	10.1	10	Both	69.8	0.0	7	-7.0
88		56	1	60.4	71.3	66	10.9	10	Both	71.3	0.0	7	-7.0
C91		59	1	55.3	62.6	66	7.3	10	---	62.6	0.0	7	-7.0
92		60	2	62.0	73.9	66	11.9	10	Both	73.9	0.0	7	-7.0
C116		85	1	53.8	64.4	71	10.6	10	Sub'l Inc	64.4	0.0	7	-7.0
118		87	3	56.0	69.2	66	13.2	10	Both	69.2	0.0	7	-7.0
119		88	2	54.6	67.3	66	12.7	10	Both	67.3	0.0	7	-7.0
C120 hotel		89	1	55.6	66.7	71	11.1	10	Sub'l Inc	66.7	0.0	7	-7.0
C121		90	1	49.2	64.3	71	15.1	10	Sub'l Inc	64.3	0.0	7	-7.0
122		91	1	47.2	57.5	66	10.3	10	Sub'l Inc	57.5	0.0	7	-7.0
150		92	1	50.1	53.2	66	3.1	10	---	53.2	0.0	7	-7.0
151		93	1	49.5	52.2	66	2.7	10	---	52.2	0.0	7	-7.0
152		94	1	51.3	54.4	66	3.1	10	---	54.4	0.0	7	-7.0
153		95	1	53.3	58.4	66	5.1	10	---	58.4	0.0	7	-7.0
154		96	1	48.3	50.5	66	2.2	10	---	50.5	0.0	7	-7.0
155		97	1	51.5	56.3	66	4.8	10	---	56.3	0.0	7	-7.0
300		121	1	37.7	45.9	66	8.2	10	---	45.9	0.0	7	-7.0
301		122	1	37.8	48.2	66	10.4	10	Sub'l Inc	48.2	0.0	7	-7.0
302		123	1	37.3	47.3	66	10.0	10	Sub'l Inc	47.3	0.0	7	-7.0
304		124	1	45.2	52.6	66	7.4	10	---	52.6	0.0	7	-7.0
305		125	1	44.8	52.3	66	7.5	10	---	52.3	0.0	7	-7.0
306		126	1	46.1	53.8	66	7.7	10	---	53.8	0.0	7	-7.0
307		127	1	45.5	52.9	66	7.4	10	---	52.9	0.0	7	-7.0
309		128	1	48.5	57.5	66	9.0	10	---	57.5	0.0	7	-7.0
310		129	1	49.5	59.4	66	9.9	10	---	59.4	0.0	7	-7.0
312		130	1	50.4	60.3	66	9.9	10	---	60.3	0.0	7	-7.0
315		131	1	51.0	62.1	66	11.1	10	Sub'l Inc	62.1	0.0	7	-7.0
318		132	1	56.3	68.6	66	12.3	10	Both	68.6	0.0	7	-7.0
320		133	4	56.2	68.2	66	12.0	10	Both	68.2	0.0	7	-7.0
322		134	1	56.2	68.1	66	11.9	10	Both	68.1	0.0	7	-7.0
323		135	4	59.1	70.7	66	11.6	10	Both	70.7	0.0	7	-7.0

RESULTS: SOUND LEVELS

Supplemental EIS US160/550 Grandview

Dwelling Units	# DUs	Noise Reduction			64.1	54.9	64.1	66	9.2	10	64.1	0.0	7	-7.0
		Min	Avg	Max										
		dB	dB	dB										
93a	202	1	54.9	64.1	66	9.2	10	64.1	0.0	7	-7.0			
93b	203	1	50.5	60.2	66	9.7	10	60.2	0.0	7	-7.0			
93c	204	1	50.1	60.0	66	9.9	10	60.0	0.0	7	-7.0			
81a	206	1	53.5	64.3	66	10.8	10	64.3	0.0	7	-7.0			
81b	207	1	50.8	61.9	66	11.1	10	61.9	0.0	7	-7.0			
C120b hotel	209	1	52.2	62.3	71	10.1	10	62.3	0.0	7	-7.0			
44a	211	1	47.2	60.0	66	12.8	10	60.0	0.0	7	-7.0			
1	213	2	50.6	60.5	66	9.9	10	60.5	0.0	7	-7.0			
114	215	1	39.9	62.1	66	22.2	10	62.1	0.0	7	-7.0			
1E	216	1	0.0	51.0	66	51.0	10	51.0	0.0	7	-7.0			
2E	217	1	0.0	48.8	66	48.8	10	48.8	0.0	7	-7.0			
3E	218	1	0.0	47.3	66	47.3	10	47.3	0.0	7	-7.0			
4E	219	1	0.0	45.0	66	45.0	10	45.0	0.0	7	-7.0			
5E	220	1	0.0	47.2	66	47.2	10	47.2	0.0	7	-7.0			
6E	221	1	0.0	50.6	66	50.6	10	50.6	0.0	7	-7.0			
7E	222	1	0.0	50.9	66	50.9	10	50.9	0.0	7	-7.0			
8E	223	1	0.0	41.8	66	41.8	10	41.8	0.0	7	-7.0			
9E	224	1	0.0	40.9	66	40.9	10	40.9	0.0	7	-7.0			
10E	225	1	0.0	44.5	66	44.5	10	44.5	0.0	7	-7.0			
11E	226	1	0.0	45.2	66	45.2	10	45.2	0.0	7	-7.0			
12E	227	1	0.0	49.6	66	49.6	10	49.6	0.0	7	-7.0			
13E	228	1	0.0	39.3	66	39.3	10	39.3	0.0	7	-7.0			
14E	229	1	0.0	38.5	66	38.5	10	38.5	0.0	7	-7.0			
15E	230	1	0.0	37.6	66	37.6	10	37.6	0.0	7	-7.0			
16E	231	1	0.0	37.4	66	37.4	10	37.4	0.0	7	-7.0			
17E	232	1	0.0	38.6	66	38.6	10	38.6	0.0	7	-7.0			
18E	233	1	0.0	39.4	66	39.4	10	39.4	0.0	7	-7.0			
19E	234	1	0.0	40.1	66	40.1	10	40.1	0.0	7	-7.0			
20E	235	1	0.0	46.0	66	46.0	10	46.0	0.0	7	-7.0			
21E	236	1	0.0	42.4	66	42.4	10	42.4	0.0	7	-7.0			
22E	237	1	0.0	40.9	66	40.9	10	40.9	0.0	7	-7.0			
24E	238	1	0.0	63.2	66	63.2	10	63.2	0.0	7	-7.0			
23E	239	1	0.0	55.6	66	55.6	10	55.6	0.0	7	-7.0			
Dwelling Units		# DUs	Min	Avg	Max									
			dB	dB	dB									
All Selected		182	0.0	0.0	0.0									
All Impacted		121	0.0	0.0	0.0									
All that meet NR Goal		0	0.0	0.0	0.0									

RESULTS: SOUND LEVELS

Supplemental EIS US160/550 Grandview

CDOT filename: SEISM0dG
Jts 110525

26 May 2011
TNM 2.5

Calculated with TNM 2.5

RESULTS: SOUND LEVELS

PROJECT/CONTRACT:

Supplemental EIS US160/550 Grandview
2030 Modified G Revised (110511 traffic)

RUN:

INPUT HEIGHTS

BARRIER DESIGN:

68 deg F, 50% RH

Average pavement type shall be used unless
a State highway agency substantiates the use
of a different type with approval of FHWA.

ATMOSPHERICS:

Receiver	Name	No.	#DUs	Existing		No Barrier		Increase over existing	Type	With Barrier		Noise Reduction		Goal	Calculated minus Goal
				LAeq1h	dB	LAeq1h	dB			Calculated	dB	Calculated	dB		
				dB	dB	dB	dB	dB		dB	dB	dB	dB		
		1	4	53.2	60.7	66	7.5	10	---	60.7	0.0	7	-7.0		
		29	5	59.8	60.3	66	0.5	10	---	60.3	0.0	7	-7.0		
		29a	6	53.9	68.4	66	14.5	10	Both	68.4	0.0	7	-7.0		
		30	8	54.8	60.1	66	5.3	10	---	60.1	0.0	7	-7.0		
		34	11	54.2	58.9	66	4.7	10	---	58.9	0.0	7	-7.0		
		37	16	56.3	65.1	66	8.8	10	---	65.1	0.0	7	-7.0		
		38	20	56.7	65.1	66	8.4	10	---	65.1	0.0	7	-7.0		
		C39	35	60.0	72.7	66	12.7	10	Both	72.7	0.0	7	-7.0		
		C40	40	57.0	68.8	66	11.8	10	Both	68.8	0.0	7	-7.0		
		41	52	0.0	64.9	66	64.9	10	---	64.9	0.0	7	-7.0		
		42	53	0.0	57.7	66	57.7	10	---	57.7	0.0	7	-7.0		
		43	55	0.0	66.4	66	66.4	10	Snd Lvl	66.4	0.0	7	-7.0		
		52	56	0.0	63.3	66	63.3	10	---	63.3	0.0	7	-7.0		
		55	60	0.0	61.6	66	61.6	10	---	61.6	0.0	7	-7.0		
		56	61	0.0	62.5	66	62.5	10	---	62.5	0.0	7	-7.0		
		C57	90	49.2	67.2	71	18.0	10	Sub'l Inc	67.2	0.0	7	-7.0		
		58	91	47.2	66.0	66	18.8	10	Both	66.0	0.0	7	-7.0		
		63	92	50.1	66.3	66	16.2	10	Both	66.3	0.0	7	-7.0		
		65	93	49.5	65.2	66	15.7	10	Sub'l Inc	65.2	0.0	7	-7.0		
		66	94	51.3	69.7	66	18.4	10	Both	69.7	0.0	7	-7.0		
		67	95	53.3	71.6	66	18.3	10	Both	71.6	0.0	7	-7.0		
		70	96	48.3	66.2	66	17.9	10	Both	66.2	0.0	7	-7.0		
		71	97	51.5	66.4	66	14.9	10	Both	66.4	0.0	7	-7.0		

C:\TNM25\Program\US160SEISSEISM0dG

RESULTS: SOUND LEVELS

Supplemental EIS US160/550 Grandview

72		121	3	37.7	69.4	66	31.7	10	Both	69.4	0.0	7	-7.0
73		122	2	37.8	63.3	66	25.5	10	Sub'l Inc	63.3	0.0	7	-7.0
74		123	1	37.3	68.7	66	31.4	10	Both	68.7	0.0	7	-7.0
C75		124	1	45.2	66.1	66	20.9	10	Both	66.1	0.0	7	-7.0
C79		125	1	44.8	65.8	66	21.0	10	Sub'l Inc	65.8	0.0	7	-7.0
81		126	2	46.1	69.5	66	23.4	10	Both	69.5	0.0	7	-7.0
82		127	1	45.5	70.6	66	25.1	10	Both	70.6	0.0	7	-7.0
83		128	1	48.5	69.0	66	20.5	10	Both	69.0	0.0	7	-7.0
84		129	1	49.5	69.1	66	19.6	10	Both	69.1	0.0	7	-7.0
85		130	1	50.4	67.3	66	16.9	10	Both	67.3	0.0	7	-7.0
86		131	1	51.0	68.5	66	17.5	10	Both	68.5	0.0	7	-7.0
87		132	1	56.3	70.4	66	14.1	10	Both	70.4	0.0	7	-7.0
88		133	1	56.2	71.9	66	15.7	10	Both	71.9	0.0	7	-7.0
89		134	1	56.2	74.0	66	17.8	10	Both	74.0	0.0	7	-7.0
90	900	135	1	59.1	70.9	66	11.8	10	Both	70.9	0.0	7	-7.0
91		136	1	54.5	63.7	66	9.2	10	---	63.7	0.0	7	-7.0
92		137	1	50.0	74.0	71	24.0	10	Both	74.0	0.0	7	-7.0
93		140	1	0.0	63.9	66	63.9	10	---	63.9	0.0	7	-7.0
C116		141	1	0.0	64.6	66	64.6	10	---	64.6	0.0	7	-7.0
118		142	3	0.0	67.9	66	67.9	10	Snd Lvl	67.9	0.0	7	-7.0
119		143	2	0.0	65.8	66	65.8	10	---	65.8	0.0	7	-7.0
C120		144	1	0.0	66.7	66	66.7	10	Snd Lvl	66.7	0.0	7	-7.0
C121		145	1	0.0	64.1	66	64.1	10	---	64.1	0.0	7	-7.0
122		146	1	0.0	56.9	66	56.9	10	---	56.9	0.0	7	-7.0
151		147	1	0.0	54.6	66	54.6	10	---	54.6	0.0	7	-7.0
152		148	1	0.0	53.9	66	53.9	10	---	53.9	0.0	7	-7.0
153		149	1	0.0	52.4	66	52.4	10	---	52.4	0.0	7	-7.0
154		150	1	0.0	56.0	66	56.0	10	---	56.0	0.0	7	-7.0
155		151	1	0.0	65.7	66	65.7	10	---	65.7	0.0	7	-7.0
300		152	1	0.0	58.4	66	58.4	10	---	58.4	0.0	7	-7.0
301		153	1	0.0	44.6	66	44.6	10	---	44.6	0.0	7	-7.0
302		154	1	0.0	57.6	66	57.6	10	---	57.6	0.0	7	-7.0
304		155	1	0.0	54.2	66	54.2	10	---	54.2	0.0	7	-7.0
305		156	1	0.0	53.6	66	53.6	10	---	53.6	0.0	7	-7.0
306		157	1	0.0	55.5	66	55.5	10	---	55.5	0.0	7	-7.0
307		158	1	0.0	54.4	66	54.4	10	---	54.4	0.0	7	-7.0
309		159	1	0.0	59.3	66	59.3	10	---	59.3	0.0	7	-7.0
310		160	1	0.0	60.8	66	60.8	10	---	60.8	0.0	7	-7.0
312		161	1	0.0	61.8	66	61.8	10	---	61.8	0.0	7	-7.0
315		162	1	0.0	63.2	66	63.2	10	---	63.2	0.0	7	-7.0

RESULTS: SOUND LEVELS

												Supplemental EIS US 160/550 Grandview		
318		163	1	0.0	68.4	66	68.4	10	Snd Lvl	68.4	0.0	7	-7.0	
320		164	4	0.0	67.6	66	67.6	10	Snd Lvl	67.6	0.0	7	-7.0	
322		165	1	0.0	67.4	66	67.4	10	Snd Lvl	67.4	0.0	7	-7.0	
323		167	4	0.0	70.5	66	70.5	10	Snd Lvl	70.5	0.0	7	-7.0	
324		168	1	0.0	67.0	66	67.0	10	Snd Lvl	67.0	0.0	7	-7.0	
C326		169	1	0.0	61.1	66	61.1	10	---	61.1	0.0	7	-7.0	
Grand2		170	1	0.0	69.0	66	69.0	10	Snd Lvl	69.0	0.0	7	-7.0	
Grand4		171	1	0.0	57.2	66	57.2	10	---	57.2	0.0	7	-7.0	
42a		172	1	0.0	56.8	66	56.8	10	---	56.8	0.0	7	-7.0	
56a		173	1	0.0	61.5	66	61.5	10	---	61.5	0.0	7	-7.0	
58a		174	1	0.0	65.8	66	65.8	10	---	65.8	0.0	7	-7.0	
58b		175	1	0.0	67.1	66	67.1	10	Snd Lvl	67.1	0.0	7	-7.0	
311		176	1	0.0	60.3	66	60.3	10	---	60.3	0.0	7	-7.0	
312a		177	1	0.0	61.6	66	61.6	10	---	61.6	0.0	7	-7.0	
C325		178	1	0.0	62.5	66	62.5	10	---	62.5	0.0	7	-7.0	
68		179	1	0.0	71.2	66	71.2	10	Snd Lvl	71.2	0.0	7	-7.0	
69		180	1	0.0	71.1	66	71.1	10	Snd Lvl	71.1	0.0	7	-7.0	
75d		181	1	0.0	66.0	66	66.0	10	Snd Lvl	66.0	0.0	7	-7.0	
75a		182	1	0.0	65.0	66	65.0	10	---	65.0	0.0	7	-7.0	
75b		183	1	0.0	64.5	66	64.5	10	---	64.5	0.0	7	-7.0	
75c		184	1	0.0	64.9	66	64.9	10	---	64.9	0.0	7	-7.0	
90c	<i>where located? Duplicate pt</i>	185	1	0.0	72.1	66	72.1	10	Snd Lvl	72.1	0.0	7	-7.0	
105	<i>and city goal?</i>	186	1	0.0	55.6	66	55.6	10	---	55.6	0.0	7	-7.0	
cemetery	<i>and city goal?</i>	187	1	0.0	45.8	66	45.8	10	---	45.8	0.0	7	-7.0	
115	<i>and city goal?</i>	188	1	0.0	43.5	66	43.5	10	---	43.5	0.0	7	-7.0	
107b	<i>and city goal?</i>	189	1	0.0	55.8	66	55.8	10	---	55.8	0.0	7	-7.0	
93a		190	1	0.0	64.6	66	64.6	10	---	64.6	0.0	7	-7.0	
93b		191	1	0.0	60.7	66	60.7	10	---	60.7	0.0	7	-7.0	
93c		192	1	0.0	60.5	66	60.5	10	---	60.5	0.0	7	-7.0	
81a		193	1	0.0	64.6	66	64.6	10	---	64.6	0.0	7	-7.0	
81b		194	1	0.0	62.0	66	62.0	10	---	62.0	0.0	7	-7.0	
C120b hotel		195	1	0.0	62.1	66	62.1	10	---	62.1	0.0	7	-7.0	
44a		196	1	0.0	63.5	66	63.5	10	---	63.5	0.0	7	-7.0	
Dwelling Units			# DUs	Noise Reduction										
				Min	Avg	Max								
				dB	dB	dB								
All Selected		128		0.0	0.0	0.0								
All Impacted		65		0.0	0.0	0.0								
All that meet NLR Goal		0		0.0	0.0	0.0								

RESULTS: SOUND LEVELS

Supplemental EIS US160/550 Grandview

CDOT filename: SEISM0DG
~~1110511~~

RUN FOR SOUTH RECEIVERS ONLY

26 May 2011
 TNM 2.5
 Calculated with TNM 2.5

RESULTS: SOUND LEVELS

PROJECT/CONTRACT: Supplemental EIS US160/550 Grandview
 2030 Modified G Revised (110511 traffic)
 RUN: INPUT HEIGHTS
 BARRIER DESIGN: 68 deg F, 50% RH

ATMOSPHERICS:

68 deg F, 50% RH

Average pavement type shall be used unless
 a State highway agency substantiates the use
 of a different type with approval of FHWA.

Receiver Name	No.	#DUS	Existing LAeq1h dBA	No Barrier		Increase over existing Calculated dB	Crit'n Sub'l Inc	Type Impact	With Barrier			
				LAeq1h Calculated	Crit'n				Calculated	Noise Reduction Calculated	Goal	Calculated minus Goal
1	4	1	53.2	0.0	66	0.0	10	Inactive	0.0	0.0	7	0.0
29	5	3	59.8	0.0	66	0.0	10	Inactive	0.0	0.0	7	0.0
29a	6	3	53.9	0.0	66	0.0	10	Inactive	0.0	0.0	7	0.0
30	8	2	54.8	0.0	66	0.0	10	Inactive	0.0	0.0	7	0.0
34	11	2	54.2	0.0	66	0.0	10	Inactive	0.0	0.0	7	0.0
37	16	1	56.3	0.0	66	0.0	10	Inactive	0.0	0.0	7	0.0
38	20	1	56.7	0.0	66	0.0	10	Inactive	0.0	0.0	7	0.0
C39	35	1	60.0	0.0	66	0.0	10	Inactive	0.0	0.0	7	0.0
C40	40	1	57.0	0.0	66	0.0	10	Inactive	0.0	0.0	7	0.0
41	52	1	0.0	0.0	66	0.0	10	Inactive	0.0	0.0	7	0.0
42	53	2	0.0	0.0	66	0.0	10	Inactive	0.0	0.0	7	0.0
43	55	1	0.0	0.0	66	0.0	10	Inactive	0.0	0.0	7	0.0
52	56	1	0.0	0.0	66	0.0	10	Inactive	0.0	0.0	7	0.0
55	60	1	0.0	0.0	66	0.0	10	Inactive	0.0	0.0	7	0.0
56	61	3	0.0	0.0	66	0.0	10	Inactive	0.0	0.0	7	0.0
C57	90	1	49.2	0.0	71	0.0	10	Inactive	0.0	0.0	7	0.0
58	91	3	47.2	0.0	66	0.0	10	Inactive	0.0	0.0	7	0.0
63	92	1	50.1	0.0	66	0.0	10	Inactive	0.0	0.0	7	0.0
65	93	1	49.5	0.0	66	0.0	10	Inactive	0.0	0.0	7	0.0
66	94	1	51.3	0.0	66	0.0	10	Inactive	0.0	0.0	7	0.0
67	95	1	53.3	0.0	66	0.0	10	Inactive	0.0	0.0	7	0.0
70	96	6	48.3	0.0	66	0.0	10	Inactive	0.0	0.0	7	0.0
71	97	4	51.5	0.0	66	0.0	10	Inactive	0.0	0.0	7	0.0

RESULTS: SOUND LEVELS

Supplemental EIS US160/550 Grandview

72		121	3	37.7	0.0	66	0.0	10	inactive	0.0	0.0	7	0.0
73		122	2	37.8	0.0	66	0.0	10	inactive	0.0	0.0	7	0.0
74		123	1	37.3	0.0	66	0.0	10	inactive	0.0	0.0	7	0.0
C75		124	1	45.2	0.0	66	0.0	10	inactive	0.0	0.0	7	0.0
C79		125	1	44.8	0.0	66	0.0	10	inactive	0.0	0.0	7	0.0
81		126	2	46.1	0.0	66	0.0	10	inactive	0.0	0.0	7	0.0
82		127	1	45.5	0.0	66	0.0	10	inactive	0.0	0.0	7	0.0
83		128	1	48.5	0.0	66	0.0	10	inactive	0.0	0.0	7	0.0
84		129	1	49.5	0.0	66	0.0	10	inactive	0.0	0.0	7	0.0
85		130	1	50.4	0.0	66	0.0	10	inactive	0.0	0.0	7	0.0
86		131	1	51.0	0.0	66	0.0	10	inactive	0.0	0.0	7	0.0
87		132	1	56.3	0.0	66	0.0	10	inactive	0.0	0.0	7	0.0
88		133	1	56.2	0.0	66	0.0	10	inactive	0.0	0.0	7	0.0
89		134	1	56.2	0.0	66	0.0	10	inactive	0.0	0.0	7	0.0
90		135	1	59.1	0.0	66	0.0	10	inactive	0.0	0.0	7	0.0
91		136	1	54.5	0.0	66	0.0	10	inactive	0.0	0.0	7	0.0
92		137	1	50.0	0.0	71	0.0	10	inactive	0.0	0.0	7	0.0
93		140	1	0.0	0.0	66	0.0	10	inactive	0.0	0.0	7	0.0
C116		141	1	0.0	0.0	66	0.0	10	inactive	0.0	0.0	7	0.0
118		142	3	0.0	0.0	66	0.0	10	inactive	0.0	0.0	7	0.0
119		143	2	0.0	0.0	66	0.0	10	inactive	0.0	0.0	7	0.0
C120		144	1	0.0	0.0	66	0.0	10	inactive	0.0	0.0	7	0.0
C121		145	1	0.0	0.0	66	0.0	10	inactive	0.0	0.0	7	0.0
122		146	1	0.0	0.0	66	0.0	10	inactive	0.0	0.0	7	0.0
151		147	1	0.0	0.0	66	0.0	10	inactive	0.0	0.0	7	0.0
152		148	1	0.0	0.0	66	0.0	10	inactive	0.0	0.0	7	0.0
153		149	1	0.0	0.0	66	0.0	10	inactive	0.0	0.0	7	0.0
154		150	1	0.0	0.0	66	0.0	10	inactive	0.0	0.0	7	0.0
155		151	1	0.0	0.0	66	0.0	10	inactive	0.0	0.0	7	0.0
300		152	1	0.0	0.0	66	0.0	10	inactive	0.0	0.0	7	0.0
301		153	1	0.0	0.0	66	0.0	10	inactive	0.0	0.0	7	0.0
302		154	1	0.0	0.0	66	0.0	10	inactive	0.0	0.0	7	0.0
304		155	1	0.0	0.0	66	0.0	10	inactive	0.0	0.0	7	0.0
305		156	1	0.0	0.0	66	0.0	10	inactive	0.0	0.0	7	0.0
306		157	1	0.0	0.0	66	0.0	10	inactive	0.0	0.0	7	0.0
307		158	1	0.0	0.0	66	0.0	10	inactive	0.0	0.0	7	0.0
309		159	1	0.0	0.0	66	0.0	10	inactive	0.0	0.0	7	0.0
310		160	1	0.0	0.0	66	0.0	10	inactive	0.0	0.0	7	0.0
312		161	1	0.0	0.0	66	0.0	10	inactive	0.0	0.0	7	0.0
315		162	1	0.0	0.0	66	0.0	10	inactive	0.0	0.0	7	0.0

RESULTS: SOUND LEVELS

											Supplemental EIS US160/550 Grandview				
318	163	1	0.0	0.0	0.0	66	0.0	10	inactive	0.0	0.0	0.0	7	0.0	
320	164	4	0.0	0.0	0.0	66	0.0	10	inactive	0.0	0.0	0.0	7	0.0	
322	165	1	0.0	0.0	0.0	66	0.0	10	inactive	0.0	0.0	0.0	7	0.0	
323	167	4	0.0	0.0	0.0	66	0.0	10	inactive	0.0	0.0	0.0	7	0.0	
324	168	1	0.0	0.0	0.0	66	0.0	10	inactive	0.0	0.0	0.0	7	0.0	
C326	169	1	0.0	0.0	0.0	66	0.0	10	inactive	0.0	0.0	0.0	7	0.0	
Grand2	170	1	0.0	0.0	0.0	66	0.0	10	inactive	0.0	0.0	0.0	7	0.0	
Grand4	171	1	0.0	0.0	0.0	66	0.0	10	inactive	0.0	0.0	0.0	7	0.0	
42a	172	1	0.0	0.0	0.0	66	0.0	10	inactive	0.0	0.0	0.0	7	0.0	
56a	173	1	0.0	0.0	0.0	66	0.0	10	inactive	0.0	0.0	0.0	7	0.0	
58a	174	1	0.0	0.0	0.0	66	0.0	10	inactive	0.0	0.0	0.0	7	0.0	
58b	175	1	0.0	0.0	0.0	66	0.0	10	inactive	0.0	0.0	0.0	7	0.0	
311	176	1	0.0	0.0	0.0	66	0.0	10	inactive	0.0	0.0	0.0	7	0.0	
312a	177	1	0.0	0.0	0.0	66	0.0	10	inactive	0.0	0.0	0.0	7	0.0	
C325	178	1	0.0	0.0	0.0	66	0.0	10	inactive	0.0	0.0	0.0	7	0.0	
68	179	1	0.0	0.0	0.0	66	0.0	10	inactive	0.0	0.0	0.0	7	0.0	
69	180	1	0.0	0.0	0.0	66	0.0	10	inactive	0.0	0.0	0.0	7	0.0	
75d	181	1	0.0	0.0	0.0	66	0.0	10	inactive	0.0	0.0	0.0	7	0.0	
75a	182	1	0.0	0.0	0.0	66	0.0	10	inactive	0.0	0.0	0.0	7	0.0	
75b	183	1	0.0	0.0	0.0	66	0.0	10	inactive	0.0	0.0	0.0	7	0.0	
75c	184	1	0.0	0.0	0.0	66	0.0	10	inactive	0.0	0.0	0.0	7	0.0	
90c	185	1	0.0	0.0	0.0	66	0.0	10	inactive	0.0	0.0	0.0	7	0.0	
105	186	1	0.0	0.0	0.0	66	0.0	10	inactive	0.0	0.0	0.0	7	0.0	
cemetery	187	1	0.0	0.0	0.0	66	0.0	10	inactive	0.0	0.0	0.0	7	0.0	
115	188	1	0.0	0.0	0.0	66	0.0	10	inactive	0.0	0.0	0.0	7	0.0	
107b	189	1	0.0	0.0	0.0	66	0.0	10	inactive	0.0	0.0	0.0	7	0.0	
93a	190	1	0.0	0.0	0.0	66	0.0	10	inactive	0.0	0.0	0.0	7	0.0	
93b	191	1	0.0	0.0	0.0	66	0.0	10	inactive	0.0	0.0	0.0	7	0.0	
93c	192	1	0.0	0.0	0.0	66	0.0	10	inactive	0.0	0.0	0.0	7	0.0	
81a	193	1	0.0	0.0	0.0	66	0.0	10	inactive	0.0	0.0	0.0	7	0.0	
81b	194	1	0.0	0.0	0.0	66	0.0	10	inactive	0.0	0.0	0.0	7	0.0	
C120b hotel	195	1	0.0	0.0	0.0	66	0.0	10	inactive	0.0	0.0	0.0	7	0.0	
44a	196	1	0.0	0.0	0.0	66	0.0	10	inactive	0.0	0.0	0.0	7	0.0	
23E	198	1	0.0	0.0	53.9	66	53.9	10	---	53.9	0.0	0.0	7	-7.0	
24E	199	1	0.0	0.0	59.2	66	59.2	10	---	59.2	0.0	0.0	7	-7.0	
150	200	1	0.0	0.0	56.3	66	56.3	10	---	56.3	0.0	0.0	7	-7.0	
Dwelling Units		# DUS	Noise Reduction												
			Min	Avg	Max										
			dB	dB	dB										
All Selected		131	0.0	0.0	0.0										

RESULTS: SOUND LEVELS

Supplemental EIS US160/550 Grandview

All Impacted	0	0.0	0.0	0.0
All that meet NR Goal	0	0.0	0.0	0.0

RESULTS: SOUND LEVELS

Supplemental EIS US160/550 Grandview

CDOT filename: SEISM0DF
 jts 110525

25 May 2011
 TNM 2.5
 Calculated with TNM 2.5

RESULTS: SOUND LEVELS

PROJECT/CONTRACT:

Supplemental EIS US160/550 Grandview
 2030 Revised F Modified (110511 traffic)

RUN:

INPUT HEIGHTS

ATMOSPHERICS:

68 deg F, 50% RH

Average pavement type shall be used unless
 a State highway agency substantiates the use
 of a different type with approval of FHWA.

Receiver Name	No.	#DUS	Existing Laeq1h dBa	No Barrier		Increase over existing Calculated dB	Type Impact	With Barrier		Noise Reduction		Calculated minus Goal
				Calculated Laeq1h dBa	Crit'n dBa			Calculated dB	Crit'n dB	Calculated dB	Goal dB	
25	3	5	56.0	62.3	66	6.3	10	62.3	0.0	7	-7.0	
29	4	3	53.2	60.0	66	6.8	10	60.0	0.0	7	-7.0	
29a	5	3	59.8	68.3	66	8.5	10	68.3	0.0	7	-7.0	
30	6	2	53.9	60.1	66	6.2	10	60.1	0.0	7	-7.0	
34	8	2	54.8	58.3	66	3.5	10	58.3	0.0	7	-7.0	
37	10	1	53.7	65.9	66	12.2	10	65.9	0.0	7	-7.0	
38	11	1	54.2	65.7	66	11.5	10	65.7	0.0	7	-7.0	
C39	12	1	60.2	73.6	66	13.4	10	73.6	0.0	7	-7.0	
C40	13	1	55.9	69.0	66	13.1	10	69.0	0.0	7	-7.0	
41	14	1	53.0	65.2	66	12.2	10	65.2	0.0	7	-7.0	
42	15	2	51.9	58.2	66	6.3	10	58.2	0.0	7	-7.0	
43	16	1	56.3	62.1	66	5.8	10	62.1	0.0	7	-7.0	
52	20	1	56.7	63.9	66	7.2	10	63.9	0.0	7	-7.0	
55	23	1	51.7	62.3	66	10.6	10	62.3	0.0	7	-7.0	
56	24	3	50.1	62.9	66	12.8	10	62.9	0.0	7	-7.0	
C57	25	1	56.1	67.5	71	11.4	10	67.5	0.0	7	-7.0	
58	26	3	53.0	66.5	66	13.5	10	66.5	0.0	7	-7.0	
63	31	1	51.5	67.5	66	16.0	10	67.5	0.0	7	-7.0	
65	33	1	50.5	69.1	66	18.6	10	69.1	0.0	7	-7.0	
66	34	1	57.8	70.8	66	13.0	10	70.8	0.0	7	-7.0	
67	35	1	60.0	72.3	66	12.3	10	72.3	0.0	7	-7.0	
70	38	6	56.0	66.8	66	10.8	10	66.8	0.0	7	-7.0	
71	39	4	50.9	67.1	66	16.2	10	67.1	0.0	7	-7.0	

RESULTS: SOUND LEVELS

Supplemental EIS US160/550 Grandview

72	40	3	57.0	70.3	66	13.3	10	Both	70.3	0.0	7	-7.0
73	41	2	49.9	63.8	66	13.9	10	Sub'l Inc	63.8	0.0	7	-7.0
74	42	1	55.1	69.2	66	14.1	10	Both	69.2	0.0	7	-7.0
C75	43	1	52.4	66.4	71	14.0	10	Sub'l Inc	66.4	0.0	7	-7.0
C79	47	1	53.8	66.2	71	12.4	10	Sub'l Inc	66.2	0.0	7	-7.0
81	49	2	57.8	69.5	66	11.7	10	Both	69.5	0.0	7	-7.0
82	50	1	60.3	70.2	66	9.9	10	Snd Lvl	70.2	0.0	7	-7.0
83	51	1	0.0	67.3	66	67.3	10	Snd Lvl	67.3	0.0	7	-7.0
84	52	1	0.0	67.0	66	67.0	10	Snd Lvl	67.0	0.0	7	-7.0
85	53	1	0.0	64.4	66	64.4	10	---	64.4	0.0	7	-7.0
86	54	1	0.0	65.4	66	65.4	10	---	65.4	0.0	7	-7.0
87	55	1	0.0	66.3	66	66.3	10	Snd Lvl	66.3	0.0	7	-7.0
88	56	1	0.0	67.8	66	67.8	10	Snd Lvl	67.8	0.0	7	-7.0
89	57	1	0.0	70.7	66	70.7	10	Snd Lvl	70.7	0.0	7	-7.0
90	58	1	0.0	67.0	66	67.0	10	Snd Lvl	67.0	0.0	7	-7.0
91	59	1	0.0	60.3	66	60.3	10	---	60.3	0.0	7	-7.0
92	60	1	0.0	70.5	66	70.5	10	Snd Lvl	70.5	0.0	7	-7.0
93	61	1	0.0	60.1	66	60.1	10	---	60.1	0.0	7	-7.0
C116	85	1	53.8	64.2	71	10.4	10	Sub'l Inc	64.2	0.0	7	-7.0
118	87	3	56.0	68.3	66	12.3	10	Both	68.3	0.0	7	-7.0
119	88	2	54.6	66.3	66	11.7	10	Both	66.3	0.0	7	-7.0
C120	89	1	55.6	66.9	71	11.3	10	Sub'l Inc	66.9	0.0	7	-7.0
C121	90	1	49.2	65.7	71	16.5	10	Sub'l Inc	65.7	0.0	7	-7.0
122	91	1	47.2	58.0	66	10.8	10	Sub'l Inc	58.0	0.0	7	-7.0
151	93	1	49.5	50.9	66	1.4	10	---	50.9	0.0	7	-7.0
152	94	1	51.3	50.8	66	-0.5	10	---	50.8	0.0	7	-7.0
153	95	1	53.3	50.2	66	-3.1	10	---	50.2	0.0	7	-7.0
154	96	1	48.3	52.0	66	3.7	10	---	52.0	0.0	7	-7.0
155	97	1	51.5	52.8	66	1.3	10	---	52.8	0.0	7	-7.0
300	121	1	37.7	64.6	66	26.9	10	Sub'l Inc	64.6	0.0	7	-7.0
301	122	1	37.8	65.0	66	27.2	10	Sub'l Inc	65.0	0.0	7	-7.0
302	123	1	37.3	58.6	66	21.3	10	Sub'l Inc	58.6	0.0	7	-7.0
304	124	1	45.2	63.8	66	18.6	10	Sub'l Inc	63.8	0.0	7	-7.0
305	125	1	44.8	62.2	66	17.4	10	Sub'l Inc	62.2	0.0	7	-7.0
306	126	1	46.1	66.2	66	20.1	10	Both	66.2	0.0	7	-7.0
307	127	1	45.5	62.6	66	17.1	10	Sub'l Inc	62.6	0.0	7	-7.0
309	128	1	48.5	64.2	66	15.7	10	Sub'l Inc	64.2	0.0	7	-7.0
310	129	1	49.5	62.9	66	13.4	10	Sub'l Inc	62.9	0.0	7	-7.0
312	130	1	50.4	67.6	66	17.2	10	Both	67.6	0.0	7	-7.0
315	131	1	51.0	64.3	66	13.3	10	Sub'l Inc	64.3	0.0	7	-7.0

RESULTS: SOUND LEVELS

Supplemental EIS US160/550 Grandview

CDOT filename: SEISModf
 jls ~~10/12/25~~

26 May 2011
 TNM 2.5
 Calculated with TNM 2.5

RUN FOR SOUTH RECEIVERS ONLY

RESULTS: SOUND LEVELS

PROJECT/CONTRACT:

Supplemental EIS US160/550 Grandview
 2030 Revised F Modified (110511 traffic)

RUN:

INPUT HEIGHTS

ATMOSPHERICS:

68 deg F, 50% RH

Average pavement type shall be used unless
 a State highway agency substantiates the use
 of a different type with approval of FHWA.

Receiver

Name	No.	#DUs	Existing		No Barrier		Increase over existing		Type	With Barrier		Noise Reduction		Goal	
			LAeq1h	DBA	LAeq1h	Calculated	Crit'n	Calculated		Sub'l Inc	Impact	LAeq1h	Calculated	Goal	Calculated
25	3	5	56.0	DBA	0.0	66	0.0	10	inactive	0.0	0.0	0.0	7	0.0	
29	4	3	53.2	DBA	0.0	66	0.0	10	inactive	0.0	0.0	0.0	7	0.0	
29a	5	3	59.8	DBA	0.0	66	0.0	10	inactive	0.0	0.0	0.0	7	0.0	
30	6	2	53.9	DBA	0.0	66	0.0	10	inactive	0.0	0.0	0.0	7	0.0	
34	8	2	54.8	DBA	0.0	66	0.0	10	inactive	0.0	0.0	0.0	7	0.0	
37	10	1	53.7	DBA	0.0	66	0.0	10	inactive	0.0	0.0	0.0	7	0.0	
38	11	1	54.2	DBA	0.0	66	0.0	10	inactive	0.0	0.0	0.0	7	0.0	
C39	12	1	60.2	DBA	0.0	66	0.0	10	inactive	0.0	0.0	0.0	7	0.0	
C40	13	1	55.9	DBA	0.0	66	0.0	10	inactive	0.0	0.0	0.0	7	0.0	
41	14	1	53.0	DBA	0.0	66	0.0	10	inactive	0.0	0.0	0.0	7	0.0	
42	15	2	51.9	DBA	0.0	66	0.0	10	inactive	0.0	0.0	0.0	7	0.0	
43	16	1	56.3	DBA	0.0	66	0.0	10	inactive	0.0	0.0	0.0	7	0.0	
52	20	1	56.7	DBA	0.0	66	0.0	10	inactive	0.0	0.0	0.0	7	0.0	
55	23	1	51.7	DBA	0.0	66	0.0	10	inactive	0.0	0.0	0.0	7	0.0	
56	24	3	50.1	DBA	0.0	66	0.0	10	inactive	0.0	0.0	0.0	7	0.0	
C57	25	1	56.1	DBA	0.0	71	0.0	10	inactive	0.0	0.0	0.0	7	0.0	
58	26	3	53.0	DBA	0.0	66	0.0	10	inactive	0.0	0.0	0.0	7	0.0	
63	31	1	51.5	DBA	0.0	66	0.0	10	inactive	0.0	0.0	0.0	7	0.0	
65	33	1	50.5	DBA	0.0	66	0.0	10	inactive	0.0	0.0	0.0	7	0.0	
66	34	1	57.8	DBA	0.0	66	0.0	10	inactive	0.0	0.0	0.0	7	0.0	
67	35	1	60.0	DBA	0.0	66	0.0	10	inactive	0.0	0.0	0.0	7	0.0	
70	38	6	56.0	DBA	0.0	66	0.0	10	inactive	0.0	0.0	0.0	7	0.0	
71	39	4	50.9	DBA	0.0	66	0.0	10	inactive	0.0	0.0	0.0	7	0.0	

RESULTS: SOUND LEVELS

Supplemental EIS US160/550 Grandview

Dwelling Units	# DUs	Noise Reduction			# DUs	48.0	54.8	61.0	0.0	0.0	0.0	7	-7.0
		Min	Avg	Max									
		dB	dB	dB									
7E	173	1	0.0	48.0	66	48.0	54.8	61.0	0.0	0.0	0.0	7	-7.0
23E	176	1	0.0	54.8	66	54.8	61.0	61.0	0.0	0.0	0.0	7	-7.0
24E	177	1	0.0	61.0	66	61.0	61.0	61.0	0.0	0.0	0.0	7	-7.0
All Selected		142	0.0	0.0	0.0								
All Impacted		3	0.0	0.0	0.0								
All that meet NR Goal		0	0.0	0.0	0.0								

RESULTS: SOUND LEVELS

Supplemental EIS US160/550 Grandview

CDOT filename: EAlign
jts 110525

25 May 2011
TNM 2.5
Calculated with TNM 2.5

RESULTS: SOUND LEVELS
PROJECT/CONTRACT: Supplemental EIS US160/550 Grandview
RUN: 2030 East Alignment (110511 traffic)
BARRIER DESIGN: INPUT HEIGHTS

ATMOSPHERICS: 68 deg F, 50% RH

Average pavement type shall be used unless
a State highway agency substantiates the use
of a different type with approval of FHWA.

Receiver	Name	No.	#DUs	Existing		No Barrier		Increase over existing		Type	With Barrier		Noise Reduction		Calculated minus Goal
				LAeq1h	dB	LAeq1h	Calculated	Crit'n	dB		Sub'l Inc	Impact	LAeq1h	Calculated	
				dB	dB						dB	dB	dB		
		25	3	56.0	0.0	66	0.0	10	inactive	0.0	0.0	7	0.0		
		29	4	53.2	0.0	66	0.0	10	inactive	0.0	0.0	7	0.0		
		29a	5	59.8	0.0	66	0.0	10	inactive	0.0	0.0	7	0.0		
		30	6	53.9	0.0	66	0.0	10	inactive	0.0	0.0	7	0.0		
		34	8	54.8	0.0	66	0.0	10	inactive	0.0	0.0	7	0.0		
		37	10	53.7	0.0	66	0.0	10	inactive	0.0	0.0	7	0.0		
		38	11	54.2	0.0	66	0.0	10	inactive	0.0	0.0	7	0.0		
		C39	12	60.2	0.0	66	0.0	10	inactive	0.0	0.0	7	0.0		
		C40	13	55.9	0.0	66	0.0	10	inactive	0.0	0.0	7	0.0		
		41	14	53.0	0.0	66	0.0	10	inactive	0.0	0.0	7	0.0		
		42	15	51.9	0.0	66	0.0	10	inactive	0.0	0.0	7	0.0		
		43	16	56.3	0.0	66	0.0	10	inactive	0.0	0.0	7	0.0		
		52	20	56.7	0.0	66	0.0	10	inactive	0.0	0.0	7	0.0		
		55	23	51.7	0.0	66	0.0	10	inactive	0.0	0.0	7	0.0		
		56	24	50.1	0.0	66	0.0	10	inactive	0.0	0.0	7	0.0		
		C57	25	56.1	0.0	71	0.0	10	inactive	0.0	0.0	7	0.0		
		58	26	53.0	0.0	66	0.0	10	inactive	0.0	0.0	7	0.0		
		63	31	51.5	67.6	66	16.1	10	Both	67.6	0.0	7	-7.0		
		65	33	50.5	68.9	66	18.4	10	Both	68.9	0.0	7	-7.0		
		66	34	57.8	70.7	66	12.9	10	Both	70.7	0.0	7	-7.0		
		67	35	60.0	72.3	66	12.3	10	Both	72.3	0.0	7	-7.0		
		70	38	56.0	0.0	66	0.0	10	inactive	0.0	0.0	7	0.0		
		71	39	50.9	0.0	66	0.0	10	inactive	0.0	0.0	7	0.0		

RESULTS: SOUND LEVELS

Supplemental EIS US160/550 Grandview

72	40	3	57.0	0.0	66	0.0	10	inactive	0.0	0.0	7	0.0
73	41	2	49.9	0.0	66	0.0	10	inactive	0.0	0.0	7	0.0
74	42	1	55.1	69.2	66	14.1	10	Both	69.2	0.0	7	-7.0
C75	43	1	52.4	66.4	71	14.0	10	Sub'l Inc	66.4	0.0	7	-7.0
C79	47	1	53.8	0.0	71	0.0	10	inactive	0.0	0.0	7	0.0
81	49	2	57.8	0.0	66	0.0	10	inactive	0.0	0.0	7	0.0
82	50	1	60.3	0.0	66	0.0	10	inactive	0.0	0.0	7	0.0
83	51	1	0.0	0.0	66	0.0	10	inactive	0.0	0.0	7	0.0
84	52	1	0.0	0.0	66	0.0	10	inactive	0.0	0.0	7	0.0
85	53	1	0.0	0.0	66	0.0	10	inactive	0.0	0.0	7	0.0
86	54	1	0.0	0.0	66	0.0	10	inactive	0.0	0.0	7	0.0
87	55	1	0.0	0.0	66	0.0	10	inactive	0.0	0.0	7	0.0
88	56	1	0.0	0.0	66	0.0	10	inactive	0.0	0.0	7	0.0
89	57	1	0.0	0.0	66	0.0	10	inactive	0.0	0.0	7	0.0
90	58	1	0.0	0.0	66	0.0	10	inactive	0.0	0.0	7	0.0
91	59	1	0.0	0.0	66	0.0	10	inactive	0.0	0.0	7	0.0
92	60	1	0.0	0.0	66	0.0	10	inactive	0.0	0.0	7	0.0
93	61	1	0.0	0.0	66	0.0	10	inactive	0.0	0.0	7	0.0
C116	85	1	53.8	0.0	71	0.0	10	inactive	0.0	0.0	7	0.0
118	87	3	56.0	0.0	66	0.0	10	inactive	0.0	0.0	7	0.0
119	88	2	54.6	0.0	66	0.0	10	inactive	0.0	0.0	7	0.0
C120	89	1	55.6	0.0	71	0.0	10	inactive	0.0	0.0	7	0.0
C121	90	1	49.2	0.0	71	0.0	10	inactive	0.0	0.0	7	0.0
122	91	1	47.2	0.0	66	0.0	10	inactive	0.0	0.0	7	0.0
151	93	1	49.5	0.0	66	0.0	10	inactive	0.0	0.0	7	0.0
152	94	1	51.3	0.0	66	0.0	10	inactive	0.0	0.0	7	0.0
153	95	1	53.3	0.0	66	0.0	10	inactive	0.0	0.0	7	0.0
154	96	1	48.3	0.0	66	0.0	10	inactive	0.0	0.0	7	0.0
155	97	1	51.5	0.0	66	0.0	10	inactive	0.0	0.0	7	0.0
300	121	1	37.7	49.4	66	11.7	10	Sub'l Inc	49.4	0.0	7	-7.0
301	122	1	37.8	52.5	66	14.7	10	Sub'l Inc	52.5	0.0	7	-7.0
302	123	1	37.3	51.8	66	14.5	10	Sub'l Inc	51.8	0.0	7	-7.0
304	124	1	45.2	65.6	66	20.4	10	Sub'l Inc	65.6	0.0	7	-7.0
305	125	1	44.8	64.2	66	19.4	10	Sub'l Inc	64.2	0.0	7	-7.0
306	126	1	46.1	67.0	66	20.9	10	Both	67.0	0.0	7	-7.0
307	127	1	45.5	64.8	66	19.3	10	Sub'l Inc	64.8	0.0	7	-7.0
309	128	1	48.5	64.9	66	16.4	10	Sub'l Inc	64.9	0.0	7	-7.0
310	129	1	49.5	63.3	66	13.8	10	Sub'l Inc	63.3	0.0	7	-7.0
312	130	1	50.4	67.4	66	17.0	10	Both	67.4	0.0	7	-7.0
315	131	1	51.0	64.5	66	13.5	10	Sub'l Inc	64.5	0.0	7	-7.0

RESULTS: SOUND LEVELS

Supplemental EIS US160/550 Grandview												
ID	Count	Level	Level	Level	Level	Level	Level	Level	Level	Level	Level	Level
318	1	56.3	69.2	66	12.9	10	Both	69.2	0.0	7	-7.0	
320	4	56.2	0.0	66	0.0	10	inactive	0.0	0.0	7	0.0	
322	1	56.2	0.0	66	0.0	10	inactive	0.0	0.0	7	0.0	
323	4	59.1	71.2	66	12.1	10	Both	71.2	0.0	7	-7.0	
324	1	54.5	67.8	66	13.3	10	Both	67.8	0.0	7	-7.0	
C326	1	50.0	64.4	71	14.4	10	Subl Inc	64.4	0.0	7	-7.0	
Grand2	1	52.4	69.7	66	17.3	10	Both	69.7	0.0	7	-7.0	
Grand4	1	45.0	57.8	66	12.8	10	Subl Inc	57.8	0.0	7	-7.0	
42a	1	0.0	57.3	66	57.3	10	---	57.3	0.0	7	-7.0	
56a	1	0.0	62.1	66	62.1	10	---	62.1	0.0	7	-7.0	
58a	1	0.0	66.3	66	66.3	10	Snd Lvl	66.3	0.0	7	-7.0	
58b	1	0.0	67.7	66	67.7	10	Snd Lvl	67.7	0.0	7	-7.0	
311	1	0.0	62.0	66	62.0	10	---	62.0	0.0	7	-7.0	
312a	1	0.0	73.0	66	73.0	10	Snd Lvl	73.0	0.0	7	-7.0	
C325	1	0.0	63.7	66	63.7	10	---	63.7	0.0	7	-7.0	
68	1	0.0	71.7	66	71.7	10	Snd Lvl	71.7	0.0	7	-7.0	
69	1	0.0	71.5	66	71.5	10	Snd Lvl	71.5	0.0	7	-7.0	
75d	1	0.0	66.3	66	66.3	10	Snd Lvl	66.3	0.0	7	-7.0	
75a	1	0.0	65.3	66	65.3	10	---	65.3	0.0	7	-7.0	
75b	1	0.0	64.8	66	64.8	10	---	64.8	0.0	7	-7.0	
75c	1	0.0	65.2	66	65.2	10	---	65.2	0.0	7	-7.0	
90c	1	0.0	0.0	66	0.0	10	inactive	0.0	0.0	7	0.0	
105	1	0.0	0.0	66	0.0	10	inactive	0.0	0.0	7	0.0	
cemetery	1	0.0	0.0	66	0.0	10	inactive	0.0	0.0	7	0.0	
115	1	0.0	0.0	66	0.0	10	inactive	0.0	0.0	7	0.0	
107b	1	0.0	0.0	66	0.0	10	inactive	0.0	0.0	7	0.0	
93a	1	0.0	0.0	66	0.0	10	inactive	0.0	0.0	7	0.0	
93b	1	0.0	0.0	66	0.0	10	inactive	0.0	0.0	7	0.0	
93c	1	0.0	0.0	66	0.0	10	inactive	0.0	0.0	7	0.0	
81a	1	0.0	0.0	66	0.0	10	inactive	0.0	0.0	7	0.0	
81b	1	0.0	0.0	66	0.0	10	inactive	0.0	0.0	7	0.0	
C120b hotel	1	0.0	0.0	66	0.0	10	inactive	0.0	0.0	7	0.0	
44a	1	0.0	0.0	66	0.0	10	inactive	0.0	0.0	7	0.0	
1E	1	50.5	52.9	66	2.4	10	---	52.9	0.0	7	-7.0	
2E	1	46.7	53.8	66	7.1	10	---	53.8	0.0	7	-7.0	
3E	1	43.2	52.1	66	8.9	10	---	52.1	0.0	7	-7.0	
4E	1	42.9	47.0	66	4.1	10	---	47.0	0.0	7	-7.0	
5E	1	44.1	50.7	66	6.6	10	---	50.7	0.0	7	-7.0	
6E	1	50.4	53.8	66	3.4	10	---	53.8	0.0	7	-7.0	

RESULTS: SOUND LEVELS

Supplemental EIS US160/550 Grandview

	173	1	51.8	53.6	66	1.8	10	---	53.6	0.0	7	-7.0
7E												
8E	174	1	41.9	56.2	66	14.3	10	Sub'l Inc	56.2	0.0	7	-7.0
9E	175	1	38.5	63.3	66	24.8	10	Sub'l Inc	63.3	0.0	7	-7.0
10E	176	1	44.8	65.6	66	20.8	10	Sub'l Inc	65.6	0.0	7	-7.0
11E	177	1	47.2	51.1	66	3.9	10	---	51.1	0.0	7	-7.0
12E	178	1	36.3	49.2	66	12.9	10	Sub'l Inc	49.2	0.0	7	-7.0
13E	179	1	36.9	64.6	66	27.7	10	Sub'l Inc	64.6	0.0	7	-7.0
14E	180	1	36.3	56.2	66	19.9	10	Sub'l Inc	56.2	0.0	7	-7.0
15E	181	1	34.8	47.3	66	12.5	10	Sub'l Inc	47.3	0.0	7	-7.0
16E	182	1	34.8	45.8	66	11.0	10	Sub'l Inc	45.8	0.0	7	-7.0
17E	183	1	35.9	48.9	66	13.0	10	Sub'l Inc	48.9	0.0	7	-7.0
18E	184	1	36.7	53.4	66	16.7	10	Sub'l Inc	53.4	0.0	7	-7.0
19E	185	1	37.8	65.1	66	27.3	10	Sub'l Inc	65.1	0.0	7	-7.0
20E	186	1	44.6	48.6	66	4.0	10	---	48.6	0.0	7	-7.0
21E	187	1	38.1	53.4	66	15.3	10	Sub'l Inc	53.4	0.0	7	-7.0
22E	188	1	38.9	48.9	66	10.0	10	Sub'l Inc	48.9	0.0	7	-7.0
24E	165	1	53.8	66.8	66	13.0	10	Both	66.8	0.0	7	-7.0
23E	190	1	61.4	62.2	66	0.8	10	---	62.2	0.0	7	-7.0

Dwelling Units	# DUs	Noise Reduction		
		Min dB	Avg dB	Max dB
All Selected	157	0.0	0.0	0.0
All Impacted	46	0.0	0.0	0.0
All that meet NR Goal	0	0.0	0.0	0.0

3547066

4102 67 46

No Action	Eastbound						Westbound					
	AM	PM	Average	Auto	MT	HT	AM	PM	Average	Auto	MT	HT
US160												
West of GVI	2880	3665	3273	3109	98	65	2475	4040	3258	3095	98	65
GVI	2325	3110	2718	2582	82	54	2475	4040	3258	3095	98	65
GVI 351 ECI	2435	3280	2858	2715	86	57	2235	3590	2913	2767	87	58
351 East = GCI			1351	1283	41	27			1220	1159	37	24
GVI Ramp Loop c	n	n	n	n	n	n	385	590	488	463	15	10
GVI Ramp WB US160 to USS50 d	n	n	n	n	n	n	145	140	143	135	4	3
GVI Ramp EB USS50 to US160 b	115	175	145	138	4	3	n	n	n	n	n	n
So Frontage Rd west gross	0	0	0	0	0	0	n	n	n	n	n	n
3P1 Ramp EB US160 to CoRd233	290	280	285	271	9	6	n	n	n	n	n	n
3P1 Ramp EB CoRd233 to US160	195	400	298	283	9	6	n	n	n	n	n	n
3P1 Ramp WB US160 to CoRd233	n	n	n	n	n	n	1090	1065	1078	1024	32	22
3P1 Ramp WB CoRd233 to US160	n	n	n	n	n	n	705	1500	1103	1047	33	22
So Frontage Rd east gross	0	0	0	0	0	0	n	n	n	n	n	n
ECI Ramp EB US160 to CoRd233 1	610	1240	925	879	28	19			n	n	n	n
ECI Ramp EB CoRd233 to US160 1	115	250	183	173	5	4			n	n	n	n
ECI Ramp WB US160 to CoRd233 1			n	n	n	n	140	215	178	169	5	4
ECI Ramp WB CoRd233 to US160 1			n	n	n	n	940	1090	1015	964	30	20
CoRd220 2			265	252	8	5			265	252	8	5
Northbound												
US550	1350	835	1093	1038	33	22	480	1120	800	760	24	16
SH172 1			855	812	26	17			459	436	14	9
CoRd233 south	290	785	538	511	16	11	510	420	465	442	14	9
CoRd233 north	990	975	983	933	29	20	760	1265	1013	962	30	20
N CoRd gross 3			248	236	7	5	n	n	n	n	n	n
Southbound												

No frontage roads modeled in the No Action scenario
 1 Traffic volumes taken from 4f Re-Evaluation Report for 2030
 2 Data inflated from 2008 CDOT traffic counts
 3 Data for North CoRd estimate only

	Eastbound					Westbound						
	AM	PM	Average	Auto	MT	HT	AM	PM	Average	Auto	MT	HT
US160												
West of GVI	1905	2855	2380	2261	71	48	3125	4340	3733	3546	112	75
GVI	2435	3280	2858	2715	86	57	1885	3245	2565	2437	77	51
GVI-3SI	2435	3280	2858	2715	86	57	2235	3580	2908	2762	87	58
3SI East ¹			1351	1283	41	27			1220	1159	37	24
GVI Ramp Loop c	n	n	n	n	n	n	385	590	488	463	15	10
GVI Ramp WB US160 to US550 d	n	n	n	n	n	n	350	345	348	330	10	7
GVI Ramp EB US550 to US160 b	450	414	432	410	13	9			n	n	n	n
So Frontage Rd west gross ²	270	343	307	291	9	6			n	n	n	n
3PI Ramp EB US160 to CoRd233	1090	1065	1078	1024	32	22			n	n	n	n
3PI Ramp EB CoRd233 to US160	195	400	298	283	9	6			n	n	n	n
3PI Ramp WB US160 to CoRd233	n	n	n	n	n	n	290	280	285	271	9	6
3PI Ramp WB CoRd233 to US160	n	n	n	n	n	n	735	1500	1118	1062	34	22
So Frontage Rd east gross ²			240	228	7	5			n	n	n	n
ECI Ramp EB US160 to CoRd233 ¹	610	1240	925	879	28	19			n	n	n	n
ECI Ramp EB CoRd233 to US160 ¹	115	250	183	173	5	4			n	n	n	n
ECI Ramp WB US160 to CoRd233 ¹			n	n	n	n	140	215	178	169	5	4
ECI Ramp WB CoRd233 to US160 ¹			n	n	n	n	940	1090	1015	964	30	20
CoRd20 ³			265	252	8	5			265	252	8	5
No Action												
	Northbound					Southbound						
US550	535	1205	870	827	26	17	1330	835	1083	1028	32	22
SH172 ¹			855	812	26	17			459	436	14	9
CoRd233 south	290	785	538	511	16	11	510	520	515	489	15	10
CoRd233 north	990	975	983	933	29	20	760	1265	1013	962	30	20
N CoRd gross			0	0	0	0			n	n	n	n

07/15/2025

1 Traffic volumes taken from 4f Re-Evaluation Report for 2030
 2 Data for Frontage Rd west taken from 2025 GV Ramp justification paper, deflated 2% for 2030
 3 Data inflated from 2008 CDOT traffic counts

Revised F	Eastbound					Westbound						
	AM	PM	Average	Auto	MT	HT	AM	PM	Average	Auto	MT	HT
US160												
West of GVI	2175	3765	2970	2822	89	59	3125	4340	3733	3546	112	75
GVI	2285	3935	3110	2955	93	62	2740	3750	3245	3083	97	65
GVI 3SI	2285	3935	3110	2955	93	62	2885	3890	3388	3218	102	68
3SI East ¹			1351	1283	41	27			1220	1159	37	24
GVI Ramp Loop c			n	n	n	n	385	580	483	458	14	10
GVI Ramp WB US160 to US550 d			n	n	n	n	145	140	143	135	4	3
GVI Ramp EB US550 to US160 b	115	175	145	138	4	3			n	n	n	n
So Frontage Rd west gross ²			240	228	7	5			n	n	n	n
3PI Ramp EB US160 to CoRd233	1365	1980	1673	1589	50	33			n	n	n	n
3PI Ramp EB CoRd233 to US160	615	655	635	603	19	13			n	n	n	n
3PI Ramp WB US160 to CoRd233			n	n	n	n	495	485	490	466	15	10
3PI Ramp WB CoRd233 to US160			n	n	n	n	1590	2005	1798	1708	54	36
So Frontage Rd east gross ²			240	228	7	5			n	n	n	n
ECl Ramp EB US160 to CoRd233 ¹	610	1240	925	879	28	19			n	n	n	n
ECl Ramp EB CoRd233 to US160 ¹	115	250	183	173	5	4			n	n	n	n
ECl Ramp WB US160 to CoRd233 ¹			n	n	n	n	140	215	178	169	5	4
ECl Ramp WB CoRd233 to US160 ¹			n	n	n	n	940	1090	1015	964	30	20
CoRd220 ³			265	252	8	5			265	252	8	5
Revised F												
US550	1640	1640	1640	1558	49	33	990	1640	1315	1249	39	26
SH172 ¹			855	812	26	17			459	436	14	9
CoRd233 south	n	n	n	n	n	n	n	n	n	n	n	n
CoRd233 north	1065	1090	1078	1024	32	22	760	1265	1013	962	30	20
N CoRd gross			0	0	0	0			n	n	n	n

1 Traffic volumes taken from 4f Re-Evaluation Report for 2030
 2 Data for Frontage Rd west taken from 2025 GV Ramp justification paper, deflated 2% for 2030
 3 Data inflated from 2008 CDOT traffic counts

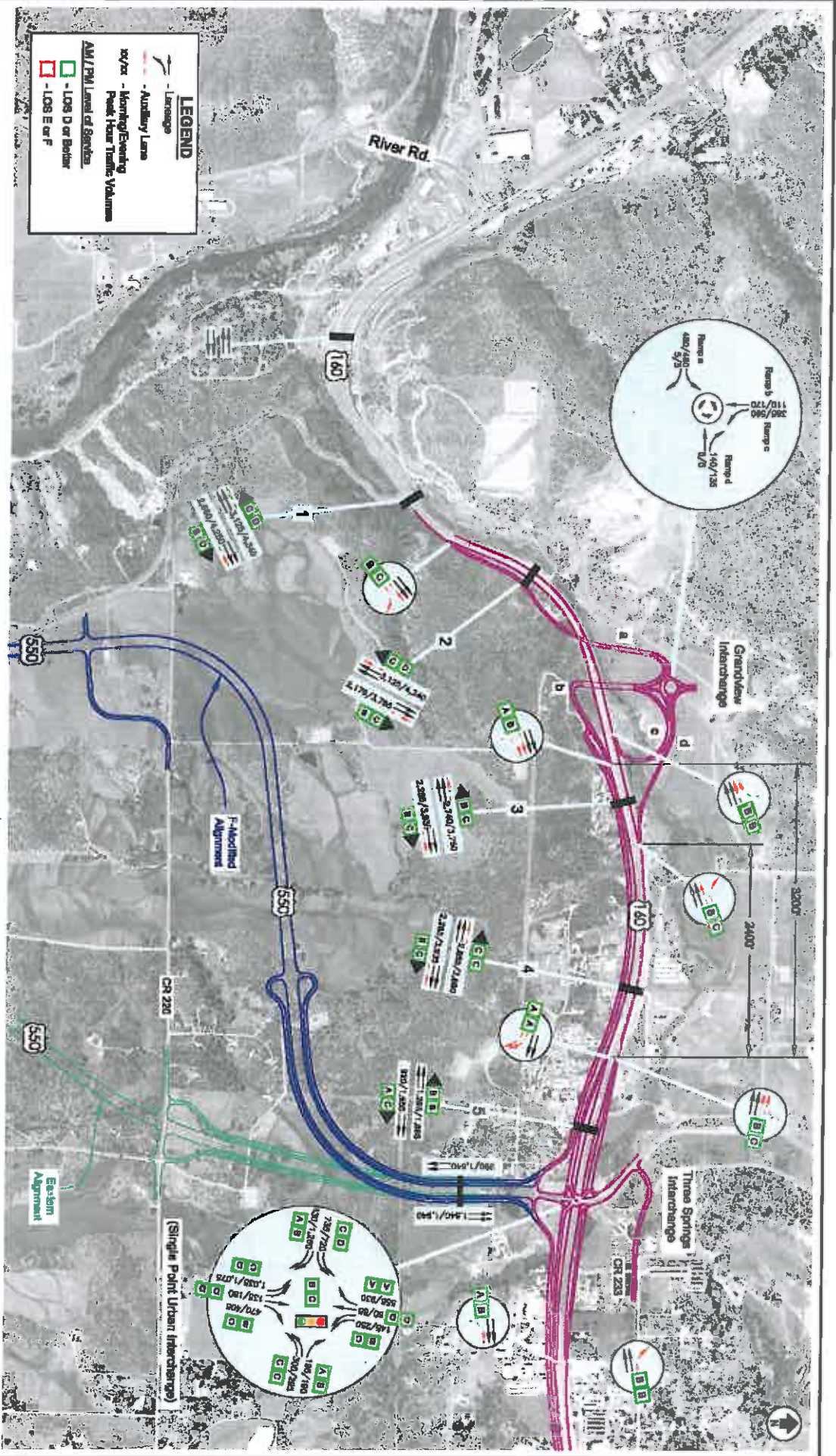
Traffic Volumes for US 160 Supplemental EIS
Parse by Roadway
TNM2.5 Input

EAST ALIGNMENT Alternative

East	Eastbound						Westbound					
	AM	PM	Average	Auto	MT	HT	AM	PM	Average	Auto	MT	HT
US160												
West of GVI	2175	3765	2970	2822	89	59	3125	4340	3733	3546	112	75
GVI	2285	3935	3110	2955	93	62	2740	3750	3245	3083	97	65
GVI-3SI	2285	3935	3110	2955	93	62	2885	3890	3388	3218	102	68
3SI East ¹			1351	1283	41	27			1220	1159	37	24
GVI Ramp Loop c			n	n	n	n	385	580	483	458	14	10
GVI Ramp WB US160 to US550 d			n	n	n	n	145	140	143	135	4	3
GVI Ramp EB US550 to US160 b	115	175	145	138	4	3			n	n	n	n
So Frontage Rd west gross ²			240	228	7	5			n	n	n	n
3PI Ramp EB US160 to CoRd233	1365	1980	1673	1589	50	33			n	n	n	n
3PI Ramp EB CoRd233 to US160	615	655	635	603	19	13			n	n	n	n
3PI Ramp WB US160 to CoRd233			n	n	n	n	495	485	490	466	15	10
3PI Ramp WB CoRd233 to US160			n	n	n	n	1590	2005	1798	1708	54	36
So Frontage Rd east gross ²			240	228	7	5			n	n	n	n
ECI Ramp EB US160 to CoRd233 ¹	610	1240	925	879	28	19			n	n	n	n
ECI Ramp EB CoRd233 to US160 ¹	115	250	183	173	5	4			n	n	n	n
ECI Ramp WB US160 to CoRd233 ¹			n	n	n	n	140	215	178	169	5	4
ECI Ramp WB CoRd233 to US160 ¹			n	n	n	n	940	1090	1015	964	30	20
CoRd220 ³			265	252	8	5			265	252	8	5
East	Northbound						Southbound					
US550	1640	1640	1640	1558	49	33	990	1640	1315	1249	39	26
SH172 ¹			855	812	26	17			459	436	14	9
CoRd233 south	n	n	n	n	n	n	n	n	n	n	n	n
CoRd233 north	1065	1090	1078	1024	32	22	760	1265	1013	962	30	20
N CoRd gross			0	0	0	0			n	n	n	n

1 Traffic volumes taken from 4f Re-Evaluation Report for 2030
 2 Data for Frontage Rd west taken from 2025 GV Ramp justification paper, deflated 2% for 2030
 3 Data inflated from 2008 CDOT traffic counts

Late Arrival Notice 110516



LEGEND

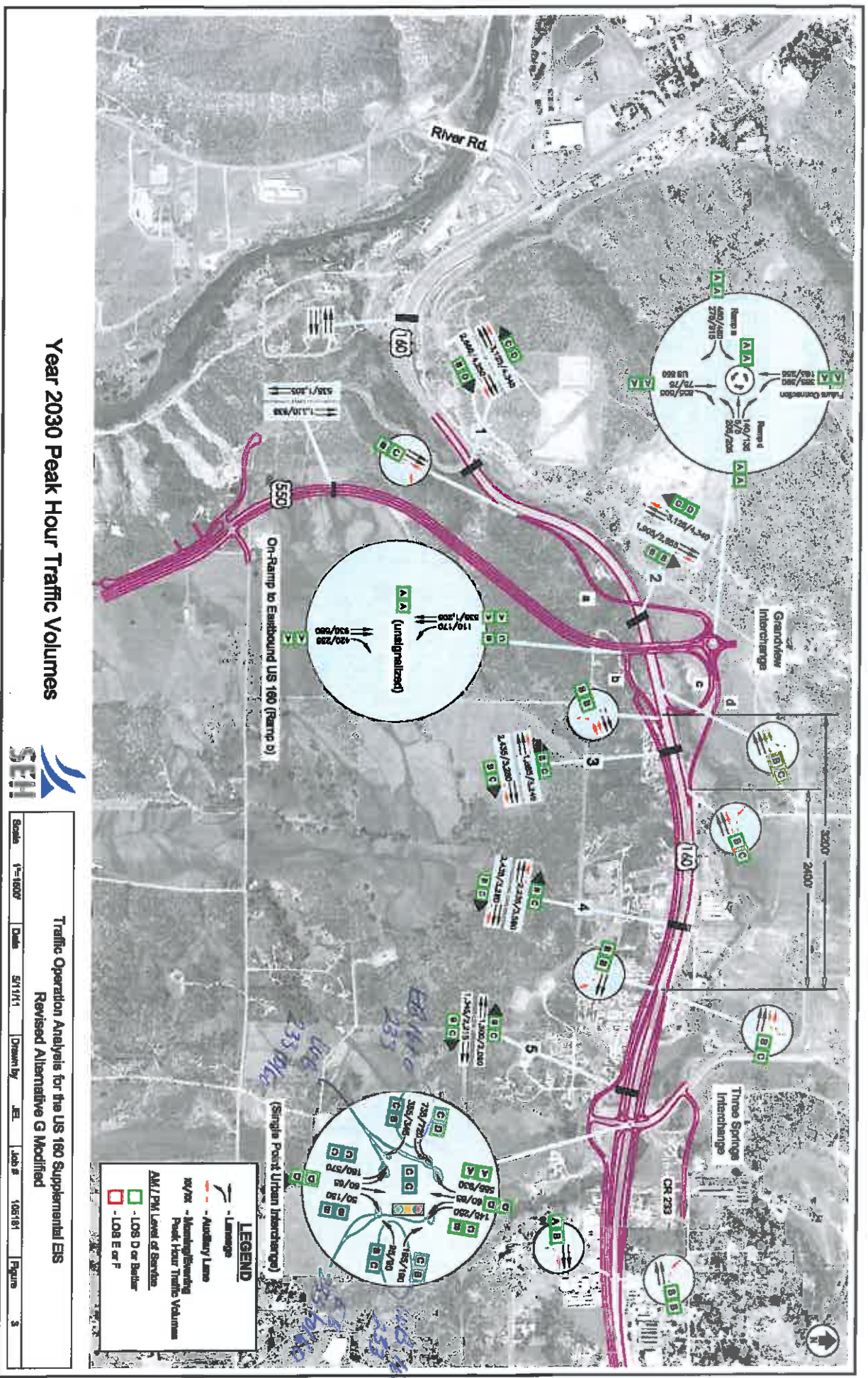
- Laneage
- Auxiliary Lane
- xx/xx - Hourly/Evening Peak Hour Traffic Volumes
- AM/PM Lane of Service
- LOS D or Better
- LOS E or F

Year 2030 Peak Hour Traffic Volumes



Traffic Operation Analysis for the US 160 Supplemental EIS
 Revised Alternative F Modified and Eastern Realignment Alternative

Scale: 1"=1000'
 Date: 07/11/11
 Drawn by: JLL
 Job #: 112426
 Figure: 4



Year 2030 Peak Hour Traffic Volumes



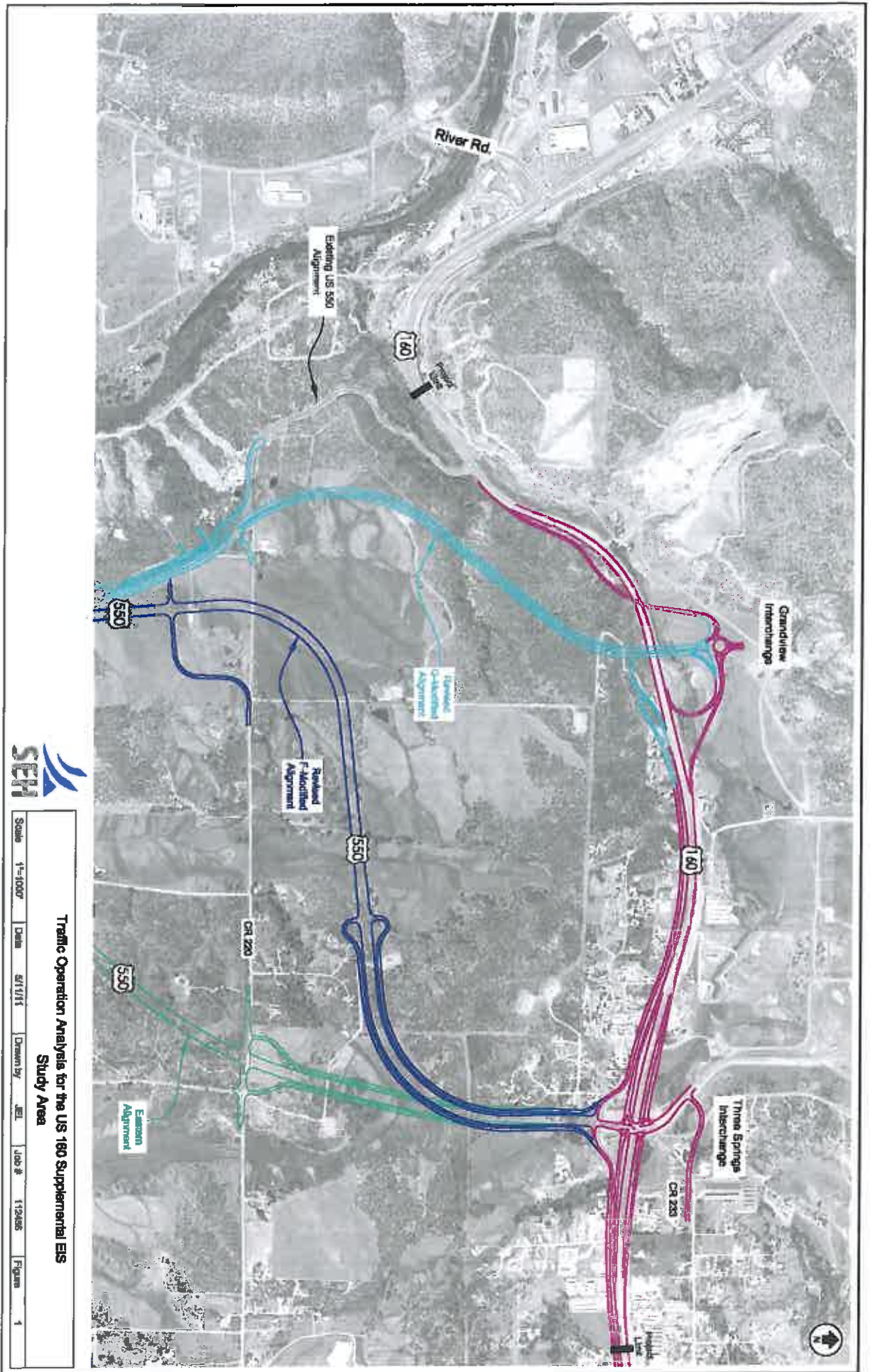
Traffic Operation Analysis for the US 160 Supplemental EIS
 Revised Alternative G Modified

Scale: 1"=1600'
 Date: 5/11/11
 Drawn by: EJ
 Job #: 105101
 Figure: 3

LEGEND

- Laneage
- Auxiliary Lane
- AM / PM - Morning/Evening Peak Hour Traffic Volumes
- LOS D or Better
- LOS E or F

Handwritten notes in blue ink at the bottom of the page: 135, 145, 155, 165, 175, 185, 195, 205, 215, 225, 235, 245, 255, 265, 275, 285, 295, 305, 315, 325, 335, 345, 355, 365, 375, 385, 395, 405, 415, 425, 435, 445, 455, 465, 475, 485, 495, 505, 515, 525, 535, 545, 555, 565, 575, 585, 595, 605, 615, 625, 635, 645, 655, 665, 675, 685, 695, 705, 715, 725, 735, 745, 755, 765, 775, 785, 795, 805, 815, 825, 835, 845, 855, 865, 875, 885, 895, 905, 915, 925, 935, 945, 955, 965, 975, 985, 995.



Traffic Operation Analysis for the US 160 Supplemental EIS Study Area

Scale: 1"=1000' | Date: 5/1/11 | Drawn by: JEL | Job #: 112465 | Figure: 1