

NR 6.2/FS3/2005
c.2

FISHING THE GRAND MESA

UPDATED

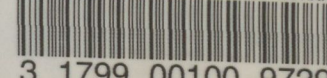
\$5.⁰⁰



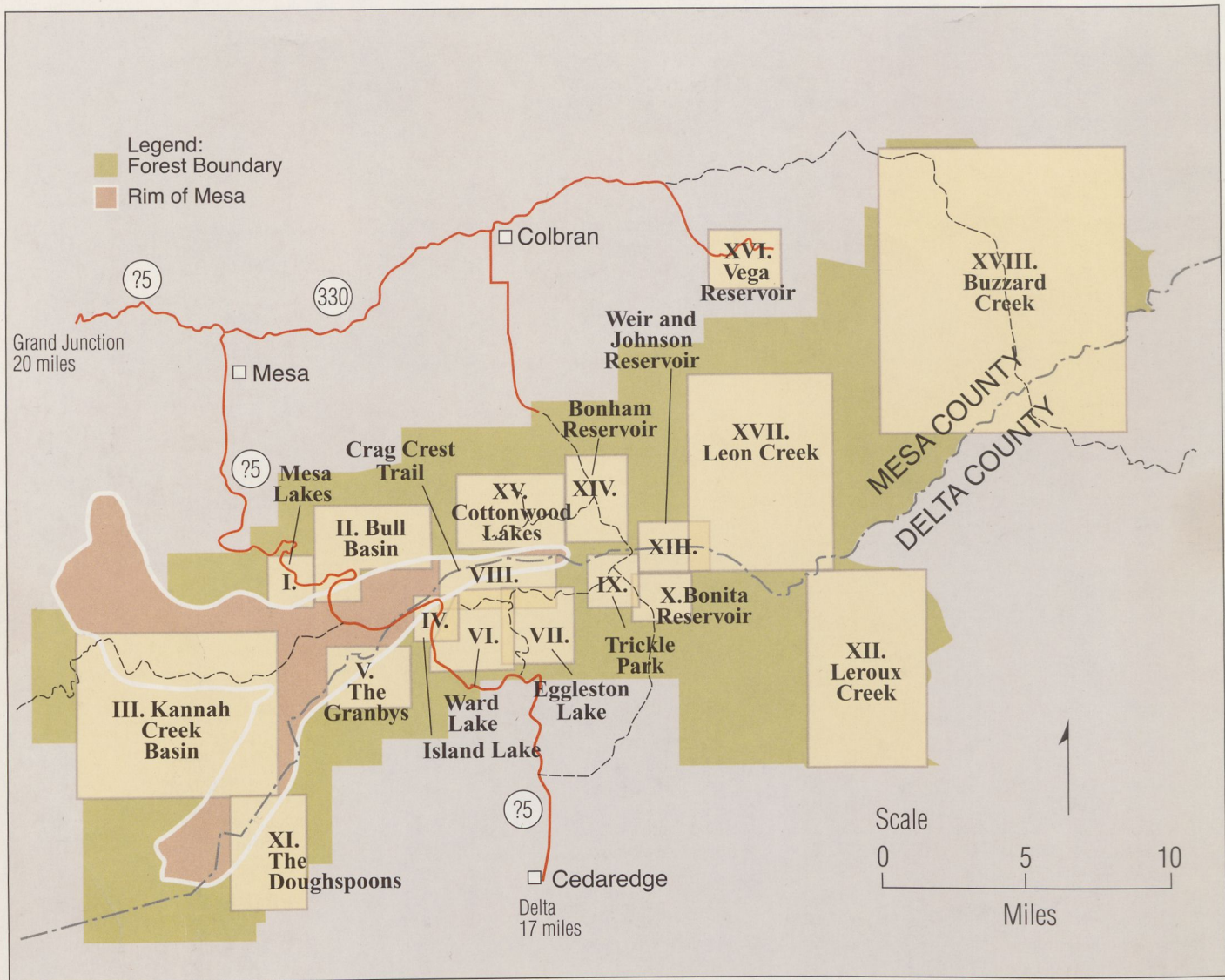
7 16349 00016 7

A
COLORADO
OUTDOORS
SPECIAL EDITION

COLORADO STATE PUBLICATIONS LIBRARY

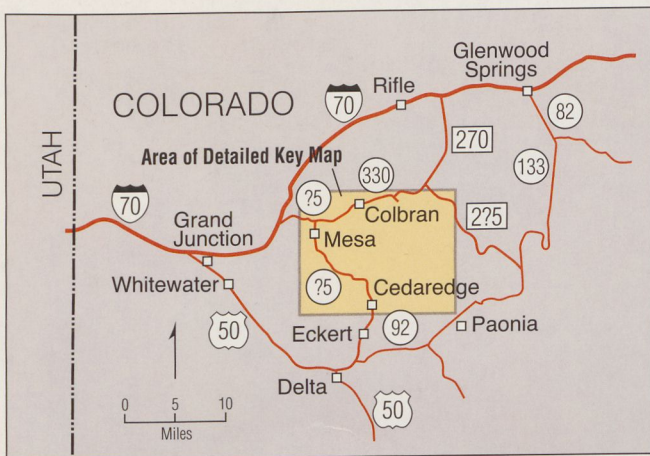


3 1799 00100 9729



Grand Mesa Key Map

How to use *Fishing the Grand Mesa*



Grand Mesa Locator Map

Fishing the Grand Mesa was first distributed by the Colorado Division of Wildlife in 1991 to help anglers enjoy an amazing concentration of mountain reservoirs, natural lakes and streams in western Colorado. This 2005 edition includes updated information to help you enjoy fishing opportunities in 100 lakes and 25 streams on the Grand Mesa. It allows you to select specific areas or waters that match your interests. In *Fishing the Grand Mesa*, you will find directions and advice to help you get to the waters you would like to visit, notes about what to expect when you arrive, boating and fishing information, the kinds of trout stocked or wild fish present, and special restrictions or regulations that apply.

This guide groups and sorts the Grand Mesa waters into 18 detailed maps. The Index (next page) will help you find the detail maps as well as information for individual reservoirs, lakes and streams. The maps are labeled using Roman numerals and named for a prominent nearby feature, e.g., Island Lake. They show good access points for each water. With a few exceptions, your trip to the waters in this guide will start from either Grand Junction or Delta and end within the boundaries of the Grand Mesa National Forest.

Corrections or comments about *Fishing the Grand Mesa* are welcome and can be sent to the authors at the Division of Wildlife.

Grand Mesa Maps

Number	Lake Name	Page
I.	Mesa Lakes	3
II.	Bull Basin	4
III.	Kannah Creek Basin	6
IV.	Island Lake	7
V.	The Granbys	8
VI.	Ward Lake	10
VII.	Eggleston Lake	12
VIII.	Crag Crest Trail	14
IX.	Trickle Park	15
X.	Bonita Reservoir	16
XI.	The Doughspoons	17
XII.	Leroux Creek	19
XIII.	Weir and Johnson Reservoir	21
XIV.	Bonham Reservoir	22
XV.	Cottonwood Lakes	24
XVI.	Vega Reservoir	26
XVII.	Leon Creek	27
XVIII.	Buzzard Creek	30

Grand Mesa Streams

M	Atkinson Creek	23
N	Big Creek	23
I	Bonita Creek	17
B	Bull Creek	5
W	Buzzard Creek	30
O	Cottonwood Creek	25
E	Dirty George Creek	9
J	Doughty Creek	20
C	Kannah Creek	6
G	Kiser Creek	14
Q	Leon Creek	29
R	Leon Creek, East	29
S	Leon Creek, Middle	29
K	Leroux Creek, East	20
L	Leroux Creek, West	20
T	Marcott Creek	29
A	Mesa Creek	4
U	Monument Creek	29
X	Owens Creek	30
V	Park Creek	29
P	Plateau Creek	26
D	Sheep Creek	7
F	Ward Creek	12
Y	Willow Creek	30
H	Youngs Creek	14

Lakes and Reservoirs

30	Alexander Lake	11
80	Atkinson Reservoir	23
65	Bailey Reservoir	19
32	Baron Lake	11
25	Battlement Lake, Big	9
26	Battlement Lake, Little	9
3	Beaver Lake	3
79	Big Creek Reservoir #1	23
89	Big Meadows Reservoir	25
16	Blue Lake	6
78	Bonham Reservoir	23
54	Bonita Reservoir	17
14	Bull Basin Reservoir #1	5
12	Bull Creek Reservoir #1	5
11	Bull Creek Reservoir #2	5
13	Bull Creek Reservoir #5	5
45	Butts Lake	15
15	Carson Lake	6

Number	Lake Name	Page
53	Cedar Mesa Reservoir	16
27	Clear Lake	9
28	Cobbett Lake (Carp)	10
97	Colby Horse Park Reservoir	28
75	Cole Reservoir #1	22
86	Cottonwood Lake #1	25
85	Cottonwood Lake #4	24
90	Cottonwood Lake #5	25
88	DeCamp Reservoir	25
33	Deep Slough Reservoir	11
57	Doughspoon Reservoir #1	18
56	Doughspoon Reservoir #2	17
66	Dogfish Reservoir	19
63	Doughty Reservoir	19
58	Dugger Reservoir	18
35	Eggleston Lake	12
44	Eggleston Lake, (Little or Upper)	14
50	Elk Park Reservoir	16
73	Finney Cut Lake #1	21
74	Finney Cut Lake #2	21
43	Forrest Lake	14
82	Forty-Acre Lake	24
4	Glacier Springs Retention Pond	3
67	Goodenough Reservoir	19
20	Granby Reservoir #1	8
21	Granby Reservoir #2	8
22	Granby Reservoir #4, 5, 10, 11	8
24	Granby Reservoir #7	9
23	Granby Reservoir #12	8
9	Griffith Lake #1	5
10	Griffith Lake, Middle (#2)	5
64	Hansen Lake	19
31	Hotel Twin Lake	11
100	Hunter Reservoir	28
17	Island Lake	7
1	Jumbo Reservoir	3
94	Kenney Creek Reservoir	27
41	Kiser Reservoir	13
37	Kiser Slough Reservoir	12
84	Kitson Reservoir	24
51	Knox Reservoir	16
99	Lanning Lake	28
98	Leon Lake	28
72	Leon Peak Reservoir (Sissie Lk.)	21
87	Lily Lake	25
18	Little Gem Reservoir	7
95	Lost Lake (Kenney Creek)	28
7	Lost Lake (Mesa Creek)	4
5	Mesa Lake	3
6	Mesa Lake, South	4
46	Military Park Reservoir	15
96	Monument Reservoir #1	28
59	Morris Reservoir	18
83	Neversweat Reservoir	24
48	Park Reservoir (Trickle)	15
76	The Pecks Reservoir #1	22
77	The Pecks Reservoir #2	22
40	Pedro Reservoir	13
60	Pitcairn Reservoir	18
61	Porter Reservoir #1 (Big Davies)	18
62	Porter Reservoir #4 (Little Davies)	18
36	Reed Reservoir	12
19	Rim Rock Reservoir	8
92	Rock Lake	27
5	Sackett Reservoir	21
81	Silver Lake	24
42	Stell Lake	14
47	Stell Lake, East	15

Number	Lake Name	Page
2	Sunset Lake	3
55	Trio Reservoir	17
52	Trout Lake	16
68	Twin Lake #1	20
69	Twin Lake #2	21
91	Vega Reservoir	26
49	Vela Reservoir	15
34	Ward Creek Reservoir	12
29	Ward Lake	10
8	Waterdog Reservoir	4
71	Weir and Johnson Reservoir	21
39	Youngs Creek Reservoir #1 & 2	13
38	Youngs Creek Reservoir #3	13
93	Youngs Lake	27

FISHING THE GRAND MESA

A Guide to Trout Fishing
In 100 Lakes and 25 Streams

A
COLORADO OUTDOORS
SPECIAL EDITION



Colorado Division of Wildlife HQ
6060 Broadway, Denver CO 80216
(303) 297-1192

Northwest Region Service Center
711 Independent Avenue.
Grand Junction, CO 81505
(970) 255-6100

Southwest Region Service Center
151 East 16th Street
Durango, CO 81301
(970) 247-0855

Southeast Region Service Center
4255 Sinton Road
Colorado Springs, CO 80907
(719) 227-5200

Northeast Region Service Center
6060 Broadway, Denver CO 80216
(970) 291-7227

By Patrick Martinez, David Langlois, Melissa Trammell, Tom Fresques, Anita Martinez

Acknowledgments: We thank the following for their contributions to this publication – Dan Kowalski, Renzo "Zo" Del Piccolo, Lyle Sidener, Bob Morris, Sherman Hebein, Bill Haggerty, Clee Sealing and Terry Wygant.

Cover photo of Cobbett Lake by Jack Olson
Fish illustrations on inside back cover by Joseph Tomelleri
Weir and Johnson Reservoir photo by Ron Ruhoff
All other reservoir photos by Jack Olson
Maps by Marc Conly

About the Grand Mesa

Welcome to the Grand Mesa! We hope you find the time to enjoy the many recreational opportunities that can be part of your fishing trip in this incredibly scenic part of western Colorado.

Spanish explorers named the Grand Mesa "Mesa Grande," which means large table. While not officially recognized as such, the Grand Mesa is regionally known as the World's Largest Flat Top Mountain. In fact, the summit area covers some 800 square miles. The Grand Mesa averages 10,000 feet in elevation and towers 6,000 feet above the surrounding Colorado and Gunnison river valleys.

Long ago, volcanic activity produced lava whose flows formed the massive Y-shaped basalt cap with the tail to the east. Pleistocene glaciers caused a weathering process known as "slumping" whereby lava blocks from the margin of the Grand Mesa's cap slid down the mountainside to produce broad landslide benches. Dams and reservoirs have been constructed in these slump benches to complement the many natural lakes. As a result, the Grand Mesa has become known for its 300 lakes and reservoirs which serve many purposes such as providing irrigation water and fishing opportunities. About a third of lakes and reservoirs on the Grand Mesa provide the aquatic habitat needed to sustain trout populations on a year-round basis.

Nowhere else in Colorado will you find this many fishing opportunities situated so closely together. Anglers can fish for seven coldwater sport fish including Colorado River and Snake River cutthroat, rainbow, brown, and brook trout, as well as splake (a lake trout x brook trout hybrid), and Arctic grayling. The Grand Mesa offers chances to wade and fly fish, cast your favorite lures, troll with a boat or bait fish at your leisure from the bank. Access to fishing waters ranges from improved roads suitable for motor homes, to unimproved roads passable only by a four-wheel drive or ATV, to trails accessible by foot or horseback only. All of these opportunities are located within a short drive of the conveniences offered by Grand Junction and Delta and the gateway towns of Cedaredge, Mesa, Collbran, Paonia and Eckert.

Playing it Safe

All of the fishing waters listed in *Fishing the Grand Mesa* are in Colorado's high country. While the top of the Grand Mesa is relatively flat, it is still high elevation. Give yourself time to acclimate to the thin mountain air before enjoying strenuous activities. Be mindful of your physical abilities.

The weather on the Grand Mesa can change quickly. Bright early morning sunshine can turn into afternoon thunderstorms bringing near freezing temperatures, even in the middle of summer. When you venture out, be prepared by taking along a rain jacket, water and other supplies. You may need these things even if you have only walked a couple hundred yards to the other side of the lake.

For more Information

The Colorado Division of Wildlife, U.S. Forest Service, Colorado Division of Parks and Outdoor Recreation and other agencies provide information regarding local conditions and current activities. Stop by one of these offices for information, materials, directions or visit their websites.

Colorado Division of Wildlife Northwest Region Service Center

711 Independent Ave.
Grand Junction, CO 81505
(970) 255-6100

Montrose Service Center

2300 S. Townsend Ave.
Montrose, CO 81401
(970) 252-6000

U. S. Forest Service

Grand Mesa Visitor Center

Intersection Hwy. 65 & Forest Road 121
(970) 242 8211 Open seasonally

Grand Mesa National Forest, Supervisor's Office

2250 Highway 50
Delta, CO 81416
(970) 874-6600

Grand Valley Ranger District

2777 Crossroads Boulevard, Suite A
Grand Junction, CO 81505
(303) 242-8211

Montrose Public Lands Center (USFS, BLM, NPS)

2505 S. Townsend Ave.
Montrose, CO 81401
(970) 240-5300

Colorado State Parks

Vega State Park
(970) 487-3407
Western Region Office
36132 32 Road, PO Box 700
Clifton, CO 81520
(970) 434-6862

Website information for the Grand Mesa

www.wildlife.state.co.us fishing information, fishing licenses and regulations brochure, state fishing records, phone numbers for fish stocking reports and fishing conditions (Colorado Division of Wildlife)

www.parks.state.co.us information and map of Vega Reservoir State Park facilities; campsite reservations (Colorado Division of Parks and Outdoor Recreation)

www.usgs.gov topographic map ordering for Grand Mesa and all of Colorado. (U.S. Geological Survey)

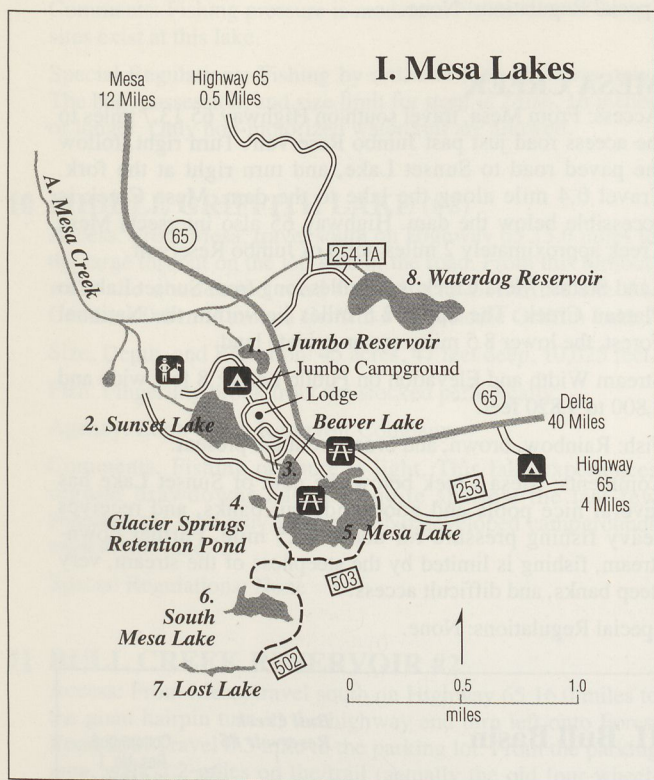
www.fs.fed.us/r2/gmug the Grand Mesa National Forest homepage, forest travel plan revisions (U.S. Forest Service)

www.nationalgeographic.com online ordering for the Grand Mesa topographic map (National Geographic Society)

I. Mesa Lakes

Convenient access off Highway 65 makes this area a popular destination spot for "weekend warriors" in need of a getaway trip to the mountains. Mesa Lakes' appeal includes developed campgrounds, picnic sites, and a lodge offering a restaurant, fuel, fishing tackle and cabins.

The Mesa Lakes area includes eight reservoirs which receive very heavy fishing pressure. The area offers drive-to lakes, stream fishing, a handicap fishing pier on Jumbo Reservoir and hike-in lakes within 1 mile of the campground. The drive-to lakes are heavily stocked with catchable rainbow trout and occasionally produce lunkers. The hike-in lakes offer fishing for brook trout and are accessed by a very good trail which winds through the forest.



1 JUMBO RESERVOIR

Access: From Mesa, travel south on Highway 65 13.6 miles to Jumbo Reservoir. A paved parking area is located right along the highway. To reach the campground turn right just past the lake and then turn at the first right into the campground area.

Size, Depth, and Elevation: 6.8 acres, 6 feet deep, and 9,880 feet.

Fish: Catchable rainbow trout are stocked several times throughout the summer. Wild brook trout are present.

Agency: U.S. Forest Service.

Comments: This reservoir has a handicap fishing area along the paved parking lot on the east shore. Fishing pressure is heavy due to the easy access and local popularity of this lake. Campgrounds, picnic tables, restrooms, and a small store are available nearby.

Special Regulations: Only non-motorized watercraft are allowed.

2 SUNSET LAKE

Access: From Mesa, travel south on Highway 65 13.7 miles to

the access road just past Jumbo Reservoir. Turn right and follow this paved road directly to the lake. To reach the dam take the right fork and follow the road alongside the lake 0.4 mile to the dam.

Size, Depth, and Elevation: 18 acres, 22 feet deep, and 9,790 feet.

Fish: Catchable rainbow trout are stocked several times throughout the summer. Wild brown and brook trout and white sucker are present.

Agency: Mesa Lakes Reservoir and Ditch Company.

Comments: Fishing pressure is heavy due to the easy access and local popularity of this lake. Campgrounds, picnic tables, restrooms, and a small store are available nearby.

Special Regulations: Only non-motorized watercraft are allowed.

3 BEAVER LAKE

Access: From Mesa, travel south on Highway 65 13.7 miles to the access road just past Jumbo Reservoir. Turn right and follow this paved road directly to Mesa Lakes Lodge. Beaver Lake is directly southeast across the road from the Mesa Lakes Lodge.

Size, Depth, and Elevation: 6.5 acres, 9 feet deep, and 9,820 feet.

Fish: Catchable rainbow trout are stocked several times throughout the summer. Wild brook and brown trout are present.

Agency: Mesa Creek Reservoir and Canal Company. Colorado Division of Wildlife owns the dam on this reservoir.

Comments: Fishing pressure is heavy due to the easy access and local popularity of this lake. Campgrounds, picnic tables, restrooms, and a small store are available nearby.

Special Regulations: Only non-motorized watercraft are allowed.

4 GLACIER SPRINGS RETENTION POND

Access: From Mesa, travel south on Highway 65 13.7 miles to the access road just past Jumbo Reservoir. Turn right and follow this paved road, passing the Mesa Lakes Lodge, to Sunset Lake. Turn left and travel 0.1 mile, passing Beaver Lake to Glacier Springs Retention Pond.

Size, Depth, and Elevation: 3 acres, 8 feet deep, and 9,830 feet.

Fish: Catchable rainbow trout are stocked several times throughout the summer. Wild brook trout are present.

Agency: U.S. Forest Service.

Comments: Fishing pressure is heavy due to the easy access and local popularity of this lake. Campgrounds, picnic tables, restrooms, and a small store are available nearby.

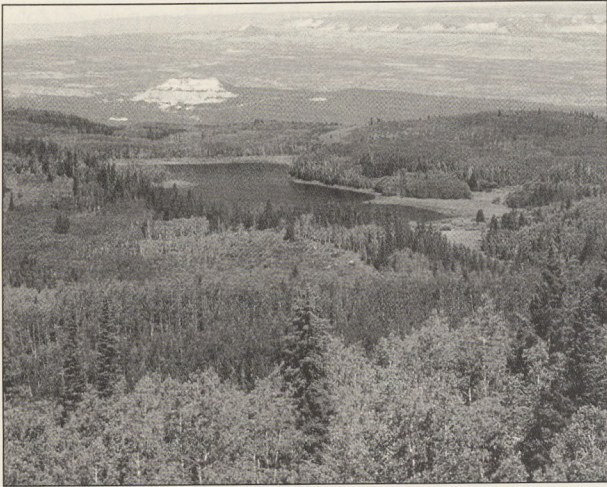
Special Regulations: Only non-motorized watercraft are allowed.

5 MESA LAKE

Access: From Mesa, travel south on Highway 65 13.7 miles to the access road just past Jumbo Reservoir. Turn right and follow this paved road, passing the Mesa Lakes Lodge, to Sunset Lake. Turn left and travel 0.3 mile to the end of the road to reach the lake.

Size, Depth, and Elevation: 26 acres, 9 feet deep, and 9,840 feet.

Fish: Catchable rainbow trout are stocked several times throughout the summer. Wild brook trout are present.



Waterdog Reservoir

Agency: Mesa Creek Reservoir and Canal Company.

Comments: Fishing pressure is heavy due to the easy access and local popularity of this lake. Campgrounds, picnic tables, restrooms, and a small store are available nearby.

Special Regulations: Only non-motorized watercraft are allowed.

6 SOUTH MESA LAKE

Access: From Mesa, travel south on Highway 65 13.7 miles to the access road just past Jumbo Reservoir. Turn right and follow this paved road, passing the Mesa Lakes Lodge, to Sunset Lake. Turn left and travel 0.3 mile to the end of the road at Mesa Lake. Walk across the Mesa Lake Dam and follow the marked trail 0.5 mile to South Mesa Lake.

Size, Depth, and Elevation: 10 acres, 18 feet deep, and 10,100 feet.

Fish: Wild brook trout are present.

Agency: Mesa Creek Reservoir and Canal Company.

Comments: This is a natural lake. Fishing pressure is moderate. The trail to the lake is short and easy to walk. No developed campsites exist at this lake. The nearby Mesa Lakes area offers camping, picnicking, restrooms and a small store. Please pack out trash.

Special Regulations: Only non-motorized watercraft are allowed.

7 LOST LAKE (MESA CREEK)

Access: From Mesa, travel south on Highway 65 13.7 miles to the access road just past Jumbo Reservoir. Turn right and follow this paved road, passing the Mesa Lakes Lodge, to Sunset Lake. Turn left and travel 0.3 mile to the end of the road at Mesa Lake. Walk across the Mesa Lake Dam and follow the marked trail, past South Mesa Lake, 1 mile to Lost Lake.

Size, Depth, and Elevation: 3.7 acres, 17 feet deep, and 9,990 feet.

Fish: Fingerling cutthroat trout have been stocked in the past. Wild brook trout are present.

Agency: U.S. Forest Service.

Comments: This is a natural lake. Fishing pressure is light. The trail to the lake is an easy walk over a gradual grade. No developed campsites exist at this lake. The nearby Mesa Lakes area offers camping, picnicking, restrooms and a small store. Please pack out trash.

Special Regulations: None.

8 WATERDOG RESERVOIR

Access: From Mesa, travel south on Highway 65 13.6 miles to road 254 taking off to the left. Travel this road 0.3 mile to the fork in the road and turn right. Continue 0.2 on road mile to Waterdog Reservoir.

Size, Depth, and Elevation: 24 acres, 20 feet deep, and 9,930 feet.

Fish: Catchable rainbow trout are stocked several times throughout the summer.

Agency: Mesa Creek Reservoir and Canal Company.

Comments: An undeveloped boat ramp is present on the north shore. Fishing pressure is heavy. No developed campsites exist at this reservoir. Water level is frequently drawn down with periodic trout winterkill.

Special Regulations: None.

A MESA CREEK

Access: From Mesa, travel south on Highway 65 13.7 miles to the access road just past Jumbo Reservoir. Turn right, follow the paved road to Sunset Lake, and turn right at the fork. Travel 0.4 mile along the lake to the dam. Mesa Creek is accessible below the dam. Highway 65 also intersects Mesa Creek approximately 2 miles north of Jumbo Reservoir.

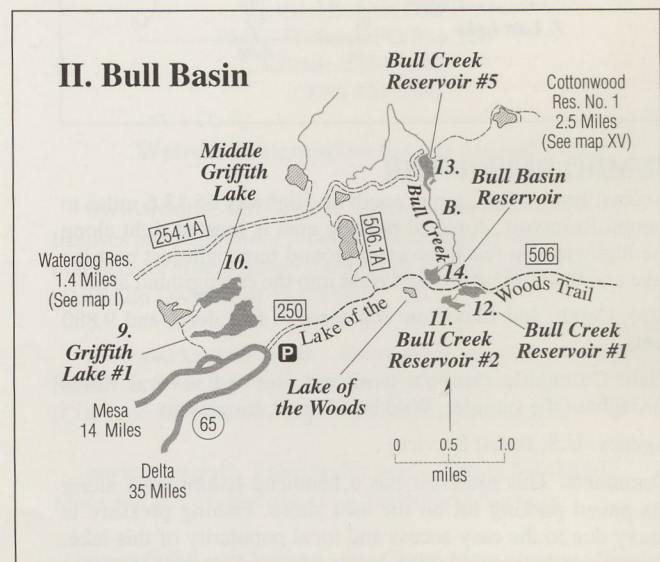
Land Status: Mesa Creek is 11 miles long from Sunset Lake to Plateau Creek. The upper 2.5 miles lie within the National Forest, the lower 8.5 miles are on private land.

Stream Width and Elevation on Public Lands: 8 feet wide and 7,800 to 9,820 feet.

Fish: Rainbow, brown, and brook trout are present.

Comments: Mesa Creek below the dam of Sunset Lake has several nice pools and good undercut banks, and receives heavy fishing pressure for about 0.25 mile. Further downstream, fishing is limited by the steepness of the stream, very steep banks, and difficult access.

Special Regulations: None.



II. Bull Basin

Bull Creek Basin is situated on a large bench in a beautiful backcountry lake setting. Access is limited to four-wheel-drive vehicles, ATV, horseback, or foot travel due to very poor road conditions. No formal campsites exist in the area.

Fishing pressure is moderate on all of the lakes.

A complex trail system provides a variety of options for exploring the basin. Continuing east on the rugged Lake of the Woods trail would bring you to Cottonwood Lake #1. Please pack out your trash.

9 GRIFFITH LAKE #1

Access: From Mesa, travel south on Highway 65 15.6 miles to the large turnout on the left side of the road. From this turnout, walk the abandoned road 0.5 mile to Griffith Lake #1.

Size, Depth, and Elevation: 45 acres, 31 feet deep, and 10,050 feet.

Fish: Fingerling cutthroat trout are stocked annually.

Agency: Coon Creek Reservoir Company.

Comments: Fishing pressure is moderate. No developed campsites exist at this lake.

Special Regulations: Fishing by artificial flies and lures only. The bag, possession, and size limit for trout is 2 fish, 16 inches or longer. Only non-motorized watercraft are allowed.

10 MIDDLE GRIFFITH LAKE (#2)

Access: From Mesa, travel south on Highway 65 15.6 miles to the large turnout on the left side of the road. From this turnout, walk the abandoned road 0.5 mile to Griffith Lake #1. Continue 0.6 mile around Griffith #1 to Middle Griffith Lake.

Size, Depth, and Elevation: 45 acres, 47 feet deep, 10,025 feet.

Fish: Fingerling brook trout are stocked periodically.

Agency: Coon Creek Reservoir Company.

Comments: Fishing pressure is light. This lake experiences regular drawdowns has been quite shallow the last few years and the lake may winterkill. No developed campgrounds exist at this lake.

Special Regulations: None

11 BULL CREEK RESERVOIR #2

Access: From Mesa, travel south on Highway 65 16.0 miles to the giant hairpin turn in the highway and turn left onto Forest Road 250. Travel 0.3 mile to the parking lot. From the parking area, walk 2.2 miles on the trail (actually the old four-wheel-drive road) to Lake of the Woods, a shallow, marshy pond. Turn right at this pond and continue 0.5 mile to Bull Creek Reservoir #2.

Size, Depth, and Elevation: 10 acres, 10 feet deep, and 10,140 feet.

Fish: Fingerling cutthroat trout are stocked periodically.

Agency: Bull Creek Reservoir Company.

Comments: Fishing pressure is moderate. The water level fluctuates greatly with irrigation demand. No developed campsites exist at this reservoir. Please pack out trash.

Special Regulations: Fishing by artificial flies and lures only. The bag, possession, and size limit for trout is 2 fish, 16 inches or longer.

12 BULL CREEK RESERVOIR #1

Access: From Mesa, travel south on Highway 65 16.0 miles to the giant hairpin turn in the highway and turn left onto Forest Road 250. Travel 0.3 mile to the bladed parking lot. From the parking area, walk 2.2 miles on the trail (actually the old four-wheel-drive road) to Lake of the Woods, a shallow, marshy pond. Turn right at this pond and continue 0.6 mile, passing below the dam on Bull Creek Reservoir #2, to Bull Creek #1.

Size, Depth, and Elevation: 10 acres, 12 feet deep, and 10,140 feet.

Fish: Fingerling cutthroat trout are stocked periodically.

Agency: Bull Creek Reservoir Company.

Comments: Fishing pressure is moderate. The water level fluctuates greatly with irrigation demand. No developed campsites exist at this reservoir. Please pack out trash.

Special Regulations: Fishing by artificial flies and lures only. The bag, possession, and size limit for trout is 2 fish, 16 inches or longer.

13 BULL CREEK RESERVOIR #5

Access: From Mesa, travel south on Highway 65 13.6 miles to the dirt road (Forest Road 254) taking off to the left. Travel this road 0.3 mile to the fork in the road and turn right on road 254.1A. Continue 0.2 mile to Waterdog Reservoir. From Waterdog, continue 5 miles to Bull Creek Reservoir #5. A four-wheel-drive vehicle is strongly recommended.

Size, Depth, and Elevation: 18 acres, 27 feet deep, and 9,640 feet.

Fish: Fingerling cutthroat trout are stocked periodically.

Agency: Bull Creek Reservoir Company.

Comments: Fishing pressure is light. The water level fluctuates greatly with irrigation demand and the reservoir has a history of winter-kill. No developed campsites exist at this reservoir. Please pack out trash.

Special Regulations: None

14 BULL BASIN RESERVOIR #1

Access: From Mesa, travel south on Highway 65 16.0 miles to the giant hairpin turn in the highway and turn left onto Forest Road 250. Travel 0.3 mile to the bladed parking lot. From the parking area, walk 2.2 miles on the trail (actually the old four-wheel-drive road) to Lake of the Woods, a shallow, marshy pond. Turn left at the pond and walk approx. 300 yards to the reservoir.

Size, Depth, and Elevation: 13 acres, 21 feet deep, and 10,000 feet.

Fish: Fingerling cutthroat trout are stocked periodically.

Agency: Bull Creek Reservoir Company.

Comments: Fishing pressure is moderate. No developed campsites exist at this reservoir. Please pack out trash.

Special Regulations: Fishing by artificial flies and lures only. The bag, possession, and size limit for trout is 2 fish, 16 inches or longer.

B BULL CREEK

Access: From Mesa, travel south on Highway 65 16.0 miles to the giant hairpin turn in the highway and turn left on Forest Road 250. Travel 0.3 mile to the bladed parking lot. From the parking area, walk 2.5 mile on the trail (actually the old four-wheel-drive road) to the Bull Creek reservoirs. Bull Creek flows from the outlets of Bull Creek reservoirs #1 and #2 and through reservoir #5.

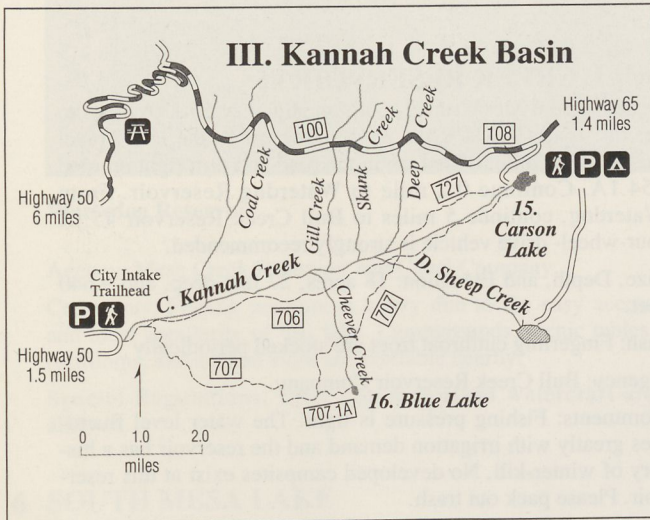
Land Status: Bull Creek is 12.5 miles long from the Bull Creek reservoirs to Plateau Creek. The upper 5.5 miles lie within the National Forest, 0.2 mile crosses BLM land downstream, and the lower 6.8 miles are on private land.

Stream Width and Elevation on Public Lands: 6 feet wide and 7,840 to 10,140 feet.

Fish: Cutthroat trout, which enter the stream from the Bull Creek reservoirs.

Comments: The upper mile of this stream is easily fished and it has several good pools. However, downstream the majority of Bull Creek is steep and brushy, and much of the stream has poor accessibility.

Special Regulations: Bull Creek reservoirs #1 and #2 and the Bull Creek connecting channels - Fishing by artificial flies and lures only. The bag, possession, and size limit for trout is 2 fish, 16 inches or longer.



III. Kannah Creek Basin

Kannah Creek is one of the largest streams on the Grand Mesa. The Kannah Creek Basin serves as a municipal watershed for the City of Grand Junction, so please, treat this resource with respect.

An excellent trail system has routes to virtually the entire drainage and provides very scenic fishing access. Kannah Creek can be accessed via several trails; however, the Kannah Creek Trail provides the most direct access. This trail spans 4,000 feet in elevation over 12 miles from the City Intake trailhead at 6,000 feet to the Carson Lake trailhead at 10,000 feet. Remember, the trails throughout the Kannah Creek Basin are good, but can be very steep and rocky in spots.

Getting to the banks of Kannah Creek can be very difficult, if not treacherous in some areas. Dense thickets of oakbrush, many deadfalls, beaver ponds on tributary streams and high, steep banks often force fishermen to follow established game trails to reach the water's edge.

Carson Lake, brimming with brook trout, is a drive-to lake requiring a short hike over level terrain to reach the lake. Blue Lake, containing cutthroat trout, is accessible only by foot or horseback on a good but very steep trail of several miles.

15 CARSON LAKE

Access: From Mesa, travel south on Highway 65 18.3 miles to the Lands End Road (Forest Access Road 100). Turn right and proceed 3.3 miles to the Carson Lake Road 108. Turn left and drive to the parking lot. Follow the trail to the lake approximately 200 yards

Size, Depth, and Elevation: 35 acres, 32 feet deep, and 10,000 feet.

Fish: Wild brook trout are present. This lake provides a good opportunity to take advantage of the Bonus Brook Trout regulation.

Agency: City of Grand Junction.

Comments: The parking lot provides access to the lake as well as the Kannah Creek Trail. Fishing pressure is moderate to heavy with easily accessible banks. There is a small campground. Toilets are available at the parking area. Please pack out trash.

Special Regulations: Wading and boating are prohibited. All watercraft, including belly-boats, are prohibited.

16 BLUE LAKE

Access: From Whitewater, travel 4.0 miles south on Highway 50 and turn left onto the Kannah Creek Road. Follow Lands End Road 2.9 miles to its junction (this forks into three roads) with the Purdy Mesa Road. Turn onto the rightmost road and proceed 6.1 miles to the City Intake Picnic Area. The Kannah Creek Trail (706) trailhead begins here. About 0.2 mile up the hill, the Spring Camp Trail (707) takes off to the right. Follow this trail 7.5 miles directly to the lake. Blue Lake could also be accessed from Carson Lake, but most anglers and hikers access it from the City Intake trailhead.

Size, Depth, and Elevation: 8 acres, 24 feet deep, and 9,800 feet.

Fish: Fingerling cutthroat trout are stocked annually.

Agency: U.S. Forest Service.

Comments: The trail to Blue Lake is extremely steep. Blue Lake is a natural lake on Cheever Creek. Fishing pressure is light to moderate. Bank fishing is difficult due to brush and boulders on the shoreline. No developed campsites exist at this reservoir. Please pack out trash.

Special Regulations: None.

C KANNAH CREEK

Access: To access Kannah Creek from the City Intake trailhead, travel 4.0 miles south from Whitewater on Highway 50 and turn left onto the Lands End Road. Follow Lands End Road 2.9 miles to its junction (this forks into three roads) with the Purdy Mesa Road. Turn onto the rightmost road and proceed 6.1 miles to the City Intake Picnic Area. The Kannah Creek Trail trailhead begins here. The Kannah Creek Trail (706) parallels Kannah Creek on the south side of the basin all the way up to Carson Lake; however, the trail is up to a mile from the creek in some areas. Also, streamside access can be very difficult if not impossible in some areas. From the City Intake, some anglers simply walk up Kannah Creek on the north side.

To access Kannah Creek from Carson Lake, travel 18.3 miles south from Mesa on Highway 65 to the Lands End Road (Forest Access Road 100). Turn right and proceed 3.3 miles to the Carson Lake Road 108. Turn left and travel 1.4 miles down to the lake. Cross the dam on Carson Lake to reach the Kannah Creek Trail trailhead that begins 0.3 mile from the Carson Lake parking area. Keep in mind that while it is fairly easy hiking down this trail, it is actually very steep and difficult to ascend. The stream below Carson Lake is bordered by extremely dense bushes and vegetation. Also, the large boulders and rocks that form the numerous pools are very slick and sometimes can be loose. Use caution when accessing or crossing Kannah Creek.

Land Status: From the City Intake upstream, all of Kannah Creek flows through Forest Service land except for the lower mile, which is on private land. About 0.1 mile below the bridge crossing Kannah Creek at the City Intake area, the stream again enters private land.

Stream Width and Elevation on Public Lands: 18 feet wide and 6,000 to 10,520 feet. Above Carson Lake the stream is much smaller and is typically fishable only up to the Flowing Park Road.

Fish: Above Carson Lake wild brook trout. Below Carson Lake down to the City Intake parking area the stream holds rainbow, brook, cutthroat, and brown trout. Fingerling rainbow and cutthroat trout have been stocked in the past.

Comments: Depending on where you fish, fishing pressure is light to moderate. The greatest numbers of trout are found further away from either trailhead. Making a day of fishing and hiking into Kannah Creek will generally allow you to reach the more remote reaches and pools. In spite of the fact that this drainage is a municipal watershed, drinking untreated water from the stream or its tributaries is not a good idea. No developed campsites exist in this area. Please make every effort to practice clean camping and sanitation in this area.

Special Regulations: None.

D SHEEP CREEK

Access: Sheep Creek is a tributary of Kannah Creek flowing from the southern slopes of the Kannah Creek basin. The stream can be accessed from either the City Intake or Carson Lake trailheads of the Kannah Creek Trail (706). Both the Kannah Creek and Spring Camp (707) trails intersect Sheep Creek within 0.5 mile of its confluence with Kannah Creek. While Sheep Creek is closer to Carson Lake than the City Intake, it is probably a toss-up as to which trailhead offers the easiest access.

Land Status: Sheep Creek lies entirely within the National Forest.

Stream Width and Elevation on Public Lands: 9 feet wide and 8,100 to 10,055 feet.

Fish: Cutthroat and brook trout, from wild spawn.

Comments: Sheep Creek offers good pools, an occasional beaver pond, and undercut banks within 0.5 mile of its confluence with Kannah Creek. The fishable portion of this stream is within the lower one mile. Above this, fishing is limited by the steepness of the stream, few pools, and very poor streamside access. Fishing pressure is light. Please pack out trash.

Special Regulations: None.

IV. Island Lake

Island Lake is the largest lake on the Grand Mesa National Forest. Accessed by Highway 65, the Island Lake area is extremely popular and well developed. The U.S. Forest Service's Grand Mesa Visitor Center is located just off of Hwy. 65 on Forest Road 121 southeast of Island Lake. It is open from Memorial Day through Labor Day. Two major campgrounds accommodate large camp trailers and motor homes. A lodge offers food, fuel, fishing tackle, and lodging.

Shore and boat access is easy, and spring and summer fishing activity is heavy. Nearby Little Gem and Rim Rock lakes help absorb this fishing pressure.

Ice fishing, which is becoming more popular, gives anglers their best shot at Island Lake splake.



Island Lake

17 ISLAND LAKE

Access: From Cedaredge, travel north on Highway 65 17.0 miles to Island Lake. To access the boat ramp travel only 16.0 miles and turn left onto Forest Road 116 (across from Cobbett Lake) and follow this gravelled road along the southern shore. Go 0.3 mile to reach the boat ramp located near the Little Bear Campground.

Size, Depth, and Elevation: 179 acres, 77 feet deep, and 10,290 feet.

Fish: Catchable rainbow and Snake River cutthroat trout are stocked several times throughout the summer. Fingerling splake are stocked periodically. Fingerling cutthroat trout have been stocked in the past. White sucker are present.

Agency: Surface Creek Ditch and Reservoir Company.

Comments: Fishing pressure is heavy due to the easy access and local popularity of this lake. Campgrounds, picnic tables, restrooms, and a small store are available nearby. This lake is a popular spot for boaters due to the size of the lake and the good boat ramp. Maintained highways offer good winter access for ice fishing.

Special Regulations: None.

18 LITTLE GEM RESERVOIR

Access: From Cedaredge, travel north on Highway 65 16.0 miles and turn left onto Forest Road 116 (across from Cobbett Lake) and follow this gravelled road along the south shore of Island Lake. Continue 0.7 mile and turn left onto the unimproved road (Forest Road 115). Follow this road 0.3 mile to the reservoir.

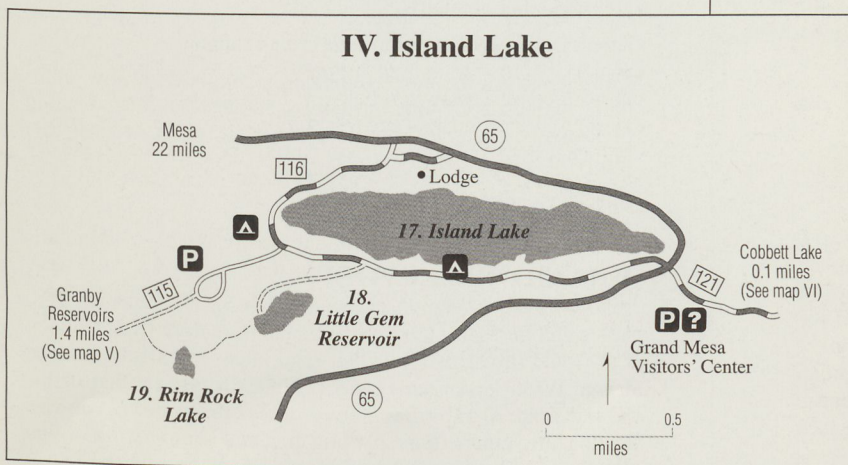
Size, Depth, and Elevation: 40 acres, 25 feet deep, and 10,020 feet.

Fish: Fingerling cutthroat trout are stocked bi-annually. Fingerling splake are stocked periodically. Splake have been stocked in the past. White sucker are present.

Agency: Private permittee.

Comments: Fishing pressure is heavy due to the easy access, close proximity to Island Lake, and local popularity of this lake. Campgrounds, picnic tables, restrooms, and a small store are available nearby at Island Lake.

Special Regulations: None.



19 RIM ROCK LAKE (RESERVOIR)

Access: From Cedaredge, travel north on Highway 65 16.0 miles and turn left onto Forest Road 116 (across from Cobbett Lake) and follow this gravelled road along the south shore of Island Lake. Follow this road 1.5 miles to the far end of the Island Lake Campground loop drive. From here, you can leave your vehicle in the parking area and begin hiking, or you can proceed by four-wheel drive, ATV, or horseback. Follow the four-wheel-drive road 0.6 mile to the trail taking off to the left. Hike on this trail 0.4 mile to Rim Rock Lake.

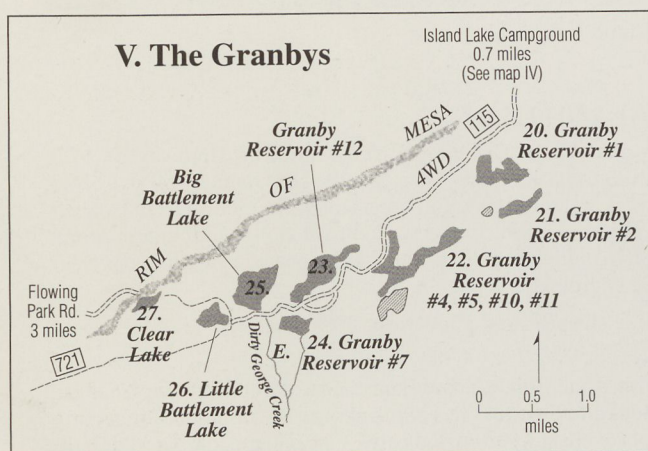
Size, Depth, and Elevation: 13 acres, 20 feet deep, and 10,120 feet.

Fish: Fingerling cutthroat trout are stocked bi-annually.

Agency: Surface Creek Ditch and Reservoir Company.

Comments: Fishing pressure is moderate. No facilities exist at this reservoir.

Special Regulations: Only electric motors are allowed.



V. The Granbys

The Granby Reservoir area includes seven of the most productive reservoirs on the Grand Mesa, and one natural lake, Clear Lake. These lakes offer outstanding fishing in a spectacular backcountry setting. Access is limited to four-wheel drive, ATV, foot, or horseback. Snowmobile access is possible in winter.

Four-wheel-drive enthusiasts will be challenged by the large rocks, narrow corridors through the timber, and numerous mud holes. Access to these lakes is so difficult that one probably can walk the road faster than it can be driven.

Fishing pressure at these lakes is moderate due to the severe road conditions. The productivity of these lakes and the limited fishing pressure allow trout to grow to very desirable sizes. Reports of 2- to 5-pound trout from these reservoirs are not uncommon.

No developed campsites are available. Please pack out your trash.

20 GRANBY RESERVOIR #1

Access: From Cedaredge, travel north on Highway 65 16.0 miles and turn left onto Forest Road 116 (across from Cobbett Lake) and travel the gravelled road along the south shore of Island Lake. Follow this road 1.5 miles to the far end of the Island Lake Campground loop drive. From here, you can leave your vehicle in the parking area and begin hiking or you can proceed by four-wheel drive, ATV, or horseback. Travel the four-wheel-drive road (Forest Road 115) 1.4 miles and turn left off the main road. Continue 0.4 mile to the reservoir.

Size, Depth, and Elevation: 26 acres, 11 feet deep, and 10,080 feet.

Fish: Colorado River cutthroat trout. Fingerling cutthroat trout are stocked bi-annually.

Agency: Granby Reservoir and Ditch Company.

Comments: Fishing pressure is moderate. Dense aquatic vegetation in late summer may hinder fishing success. No developed facilities exist at this reservoir. Please pack out trash.

Special Regulations: None.

21 GRANBY RESERVOIR #2

Access: From Cedaredge, travel north on Highway 65 16.0 miles and turn left onto Forest Road 116 (across from Cobbett Lake) and travel the gravelled road along the south shore of Island Lake. Follow this road 1.5 miles to the far end of the Island Lake Campground loop drive. From here, you can leave your vehicle in the parking area and begin hiking or you can proceed by four-wheel drive, ATV, or horseback. Travel the four-wheel-drive road (Forest Road 115) 1.4 miles and turn left off the main road. Continue 0.4 mile to Granby Reservoir #1. You'll have to park your four-wheel-drive vehicle here and proceed by foot or horseback. Cross the dam on Granby Reservoir #1 and follow the trail 0.2 mile to Granby Reservoir #2.

Size, Depth, and Elevation: 19 acres, 22 feet deep, and 10,060 feet.

Fish: Colorado River cutthroat trout. Fingerling cutthroat trout are stocked bi-annually.

Agency: U.S. Forest Service.

Comments: Fishing pressure is moderate. Dense aquatic vegetation in late summer may hinder fishing success. No developed facilities exist at this reservoir. Please pack out trash.

Special Regulations: None.

22 GRANBY RESERVOIR #4, 5, 10, 11

Access: From Cedaredge, travel north on Highway 65 16.0 miles and turn left onto Forest Road 116 (across from Cobbett Lake) and travel the gravelled road along the south shore of Island Lake. Follow this road 1.5 miles to the far end of the Island Lake Campground loop drive. From here, you can leave your vehicle in the parking area and begin hiking or you can proceed by four-wheel drive, ATV, or horseback. Travel the four-wheel-drive road (Forest Road 115) 3.0 miles directly to the reservoir.

Size, Depth, and Elevation: 74 acres, 32 feet deep, and 10,000 feet.

Fish: Colorado River cutthroat trout. Fingerling cutthroat trout are stocked bi-annually.

Agency: Granby Ditch and Reservoir Company.

Comments: As the name indicates, a single dam now inundates the basins of four formerly separate reservoirs. Fishing pressure is moderate. No developed facilities exist at this reservoir. Please pack out trash.

Special Regulations: None.

23 GRANBY RESERVOIR #12

Access: From Cedaredge, travel north on Highway 65 16.0 miles and turn left onto Forest Road 116 (across from Cobbett Lake) and travel the gravelled road along the south shore of Island Lake. Follow this road 1.5 miles to the far end of the Island Lake Campground loop drive. From here, you can leave your vehicle in the parking area and begin hiking or you can proceed by four-wheel drive, ATV, or horseback. Travel

the four-wheel-drive road (Forest Road 115) 3.5 miles, traveling past Granby Reservoir #4, 5, 10, 11, directly to the reservoir.

Size, Depth, and Elevation: 49 acres, 23 feet deep, and 10,000 feet.

Fish: Colorado River cutthroat trout. Fingerling cutthroat trout are stocked bi-annually.

Agency: Granby Ditch and Reservoir Company.

Comments: Fishing pressure is moderate. No developed facilities exist at this reservoir. Please pack out trash.

Special Regulations: None.

24 GRANBY RESERVOIR #7

Access: From Cedaredge, travel north on Highway 65 16.0 miles and turn left onto Forest Road 116 (across from Cobbett Lake) and travel the gravelled road along the south shore of Island Lake. Follow this road 1.5 miles to the far end of the Island Lake Campground loop drive. From here, you can leave your vehicle in the parking area and begin hiking or you can proceed by four-wheel drive, ATV, or horseback. Travel the four-wheel-drive road (Forest Road 115) 3.7 miles, traveling past Granby reservoirs #4, 5, 10, 11 and #12, directly to the reservoir.

Size, Depth, and Elevation: 15 acres, 7 feet deep, and 9,920 feet.

Fish: Colorado River cutthroat trout. Fingerling cutthroat trout are stocked bi-annually.

Agency: Granby Ditch and Reservoir Company.

Comments: Fishing pressure is moderate. No developed facilities exist at this reservoir. Please pack out trash.

Special Regulations: Only nonmotorized watercraft are allowed

25 BIG BATTLEMENT LAKE

Access: From Cedaredge, travel north on Highway 65 16.0 miles and turn left onto Forest Road 116 (across from Cobbett Lake) and travel the gravelled road along the south shore of Island Lake. Follow this road 1.5 miles to the far end of the Island Lake Campground loop drive. From here, you can leave your vehicle in the parking area and begin hiking or you can proceed by four-wheel drive, ATV, or horseback. Travel the four-wheel-drive road (Forest Road 115) 4.0 miles, traveling past Granby reservoirs #4, 5, 10, 11, #12, and #7, directly to the reservoir.

Size, Depth, and Elevation: 42 acres, 45 feet deep, and 10,080 feet.

Fish: Brook trout are present. Brook trout are from wild spawn.

Agency: U.S. Forest Service.

Comments: Fishing pressure is moderate. No developed facilities exist at this reservoir. Please pack out trash.

Special Regulations: None.

26 LITTLE BATTLEMENT LAKE

Access: From Cedaredge, travel north on Highway 65 16.0 miles and turn left onto Forest Road #116 (across from Cobbett Lake) and travel the gravelled road along the south shore of Island Lake. Follow this road 1.5 miles to the far end of the Island Lake Campground loop drive. From here, you can leave your vehicle in the parking area and begin hiking or you can proceed by four-wheel drive, ATV, or horseback. Travel the four-wheel-drive road (Forest Road #115) 4.3



Cobbett Lake.

miles, traveling past Granby reservoirs #4, 5, 10, 11, #12, and #7, and Big Battlement Lake, directly to the reservoir.

Size, Depth, and Elevation: 16 acres, 22 feet deep, and 10,050 feet.

Fish: Colorado River cutthroat trout and brook trout. Fingerling cutthroat trout are stocked periodically. Brook trout are from wild spawn.

Agency: U.S. Forest Service.

Comments: Fishing pressure is moderate. No developed facilities exist at this reservoir. Please pack out trash.

Special Regulations: None.

27 CLEAR LAKE

Access: From Cedaredge, travel north on Highway 65 16.0 miles and turn left onto Forest Road 116 (across from Cobbett Lake) and travel the gravelled road along the south shore of Island Lake. Follow this road 1.5 miles to the far end of the Island Lake Campground loop drive. From here, you can leave your vehicle in the parking area and begin hiking or you can proceed by four-wheel drive, ATV, or horseback. Travel the four-wheel-drive road (Forest Road #115) 4.3 miles, traveling past Granby reservoirs #4, 5, 10, 11, #12 and #7 and Big Battlement Lake, to Little Battlement Lake. From here, you must proceed by foot or horseback. Hike around the north shore of Little Battlement Lake and continue 0.8 mile west to Clear Lake.

Size, Depth, and Elevation: 6 acres, 17 feet deep, and 10,180 feet.

Fish: Colorado River cutthroat trout. Fingerling cutthroat trout are stocked periodically.

Agency: U.S. Forest Service.

Comments: Clear Lake is a natural lake having no obvious inlet or outlet. This lake lives up to its name by having extremely clear water that allows fishermen to see the cutthroat trout. It sits in a large boulder field which makes for a rather unique setting. Fishing pressure is light due to its remoteness. No developed facilities exist at this reservoir. Please pack out trash.

Special Regulations: None.

E DIRTY GEORGE CREEK

Access: From Cedaredge, travel north on Highway 65 16.0 miles and turn left onto Forest Road 116 (across from Cobbett Lake) and travel the gravelled road along the south shore of Island Lake. Follow this road 1.5 miles to the far end of the Island Lake Campground loop drive. From here, you can leave your vehicle in the parking area and begin hiking or you can proceed by four-wheel drive, ATV, or horseback. Travel

the four-wheel-drive road (Forest Road 115) 4.0 miles, traveling past Granby reservoirs #4, 5, 10, 11, #12, and #7, directly to Big Battlement Lake. Dirty George Creek flows between Little and Big Battlement lakes, and out of Big Battlement Lake. No roads or designated trails provide access to this stream.

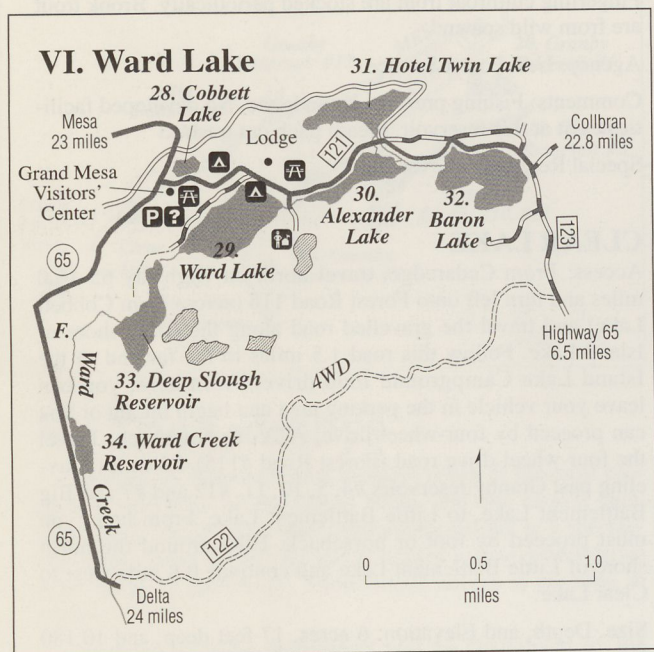
Land Status: Dirty George Creek is 10.4 miles long from the dam of Big Battlement Lake to Tongue Creek. However, only the upper 2.4 miles are on National Forest, 1.3 miles are on BLM, and the lower 6.7 miles lies entirely on private lands.

Stream Width and Elevation on Public Lands: 18 feet wide and 7,220 to 10,040 feet.

Fish: Brook and Colorado River cutthroat trout. Cutthroats escape from Big Battlement Lake and brook trout probably spawn in the stream.

Comments: The first mile below Big Battlement Lake offers the best fishing. Below here, the stream becomes extremely steep and overgrown with vegetation.

Special Regulations: None.



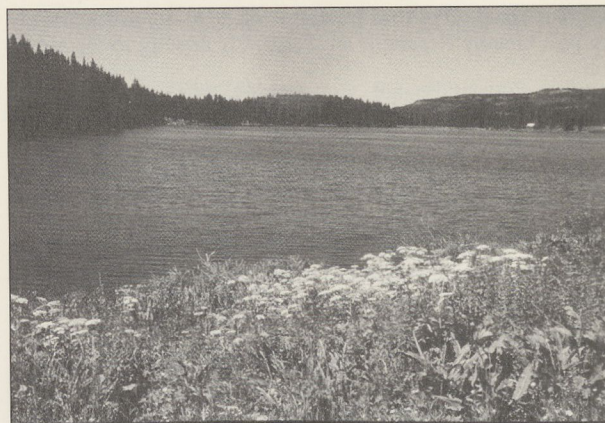
VI. Ward Lake

The Ward Lake area is readily accessible off Highway 65. This area is well developed with several major campgrounds that accommodate large camp trailers and motor homes, and a lodge/store that offers food, fuel, fishing tackle, and lodging. The U. S. Forest Service Grand Mesa Visitor's Center is located at the junction of Highway 65 and Forest Road 121 near Cobbett Lake.

The numerous lakes in this area are mostly drive-to reservoirs providing fishing in a convenient setting. The larger lakes in this area, Ward, Alexander, Hotel Twin, and Baron, are very popular with fishermen and have boat launching areas.

28 COBBETT LAKE (CARP)

Access: From Cedaredge, travel north on Highway 65 16.0 miles to Cobbett Lake, which is immediately adjacent to the highway on the right-hand side. This lake is accessible by road on three sides.



Ward Lake

Size, Depth, and Elevation: 12 acres, 30 feet deep, and 10,260 feet.

Fish: Catchable rainbow trout are stocked several times throughout the summer. Whiter sucker are present.

Agency: U.S. Forest Service.

Comments: Fishing pressure is heavy due to easy access and the local popularity of this lake. A campground and restrooms are available on the lake's eastern shore.

Special Regulations: None

29 WARD LAKE

Access: From Cedaredge, travel north on Highway 65 16.0 miles and turn right onto Forest Road 121 (paved), just before reaching Cobbett Lake. Continue 0.3 mile and turn right into the Ward Lake Campground. Follow the road through the campground to the lower camping area adjacent to the lake. An unimproved boat launching area is located just north of the lake's dam. The lake can also be reached by continuing 0.2 mile past the campground entrance to the Wardway Picnic Area on the right-hand side of the road. The lake is easily accessible at this point.

Size, Depth, and Elevation: 85 acres, 72 feet deep, 10,100 feet.

Fish: Catchable rainbow trout are stocked several times throughout the summer. Splake are stocked periodically. Wild brook trout and white sucker are present.

Agency: Surface Creek Ditch and Reservoir Company.

Comments: The boat access area allows the launching of smaller trailered boats, water levels permitting. Fishing pressure is heavy due to the easy access and local popularity of this lake. Two major campgrounds and lodge complete with a



Hotel Twin Lake



Alexander Lake

small store offer convenient accommodations.

30 ALEXANDER LAKE

Access: From Cedaredge, travel north on Highway 65 16.0 miles and turn right onto Forest Road 121 (paved), just before reaching Cobbett Lake. Proceed 1.3 miles to Alexander Lake, on the right-hand side of the road. The lake is situated adjacent to Forest Road 121, which borders the lake's entire northern shore, making for very easy access. A gravelled boat ramp, on the lake's western tip, is conveniently located off Forest Road #121.

Size, Depth, and Elevation: 41 acres, 48 feet deep, and 10,130 feet.

Fish: Catchable rainbow trout are stocked several times throughout the summer. Wild brook trout and white sucker are present.

Agency: Surface Creek Ditch and Reservoir Company.

Comments: This is a well developed area with easy access. Fishing pressure is heavy. Picnic areas, a lodge with a small store, and restrooms are present at this lake. The improved boat ramp easily accommodates trailered boats.

Special Regulations: None.

31 HOTEL TWIN LAKE

Access: From Cedaredge, travel north on Highway 65 16.0 miles and turn right onto Forest Road #121 (paved), just before reaching Cobbett Lake. Proceed 1.5 miles to Hotel Twin Lake, adjacent to Forest Road #121 on the left-hand side. This lake has road access to the eastern and northern shores. An unimproved boat launching area, on the lake's eastern shore, is conveniently located off Forest Road #121.

Size, Depth, and Elevation: 40 acres, 36 feet deep, and 10,208 feet.

Fish: Catchable rainbow trout are stocked several times throughout the summer. Wild brook trout are present.

Agency: Surface Creek Ditch and Reservoir Company.

Comments: Fishing pressure is heavy due to the easy access and local popularity of this lake. Several small stores and a gas station provide food, fishing tackle and fuel. The boat access area allows the launching of smaller trailered boats, water levels permitting. Many private cabins surround this lake.

Special Regulations: None.



Baron Lake

32 BARON LAKE

Access: From Cedaredge, travel north on Highway 65 16.0 miles and turn right onto Forest Road 121 (paved), just before reaching Cobbett Lake. Proceed 2.2 miles to Baron Lake, on the right-hand side of the road. The lake is situated adjacent to Forest Road 121, which borders the lake's entire northern shore, making for very easy access. An unimproved boat launching area, on the lake's northern shore, is conveniently located off Forest Road 121.

Size, Depth, and Elevation: 100 acres, 38 feet deep, and 10,125 feet.

Fish: Rainbow trout and white sucker. Catchable rainbow trout are stocked several times throughout the summer.

Agency: Surface Creek Ditch and Reservoir Company.

Comments: Fishing pressure is heavy due to the easy access and local popularity of this lake. Several small stores and a gas station, providing food, fishing tackle and fuel, are located within 0.5 mile of the lake. The boat access area allows the launching of smaller trailered boats, water levels permitting. Private cabins are located on the lake's northern shore.

Special Regulations: None.

33 DEEP SLOUGH RESERVOIR

Access: From Cedaredge, travel north on Highway 65 16.0 miles and turn right onto Forest Road #121 (paved), just before reaching Cobbett Lake. Continue 0.3 mile and turn right into the Ward Lake Campground. Follow the road through the campground to the lower camping area adjacent to the lake. From here, you will drive below the dam on Ward Lake. Hike for 0.3 mile to Deep Slough Reservoir.

Size, Depth, and Elevation: 48 acres, 15 feet deep, and 10,018 feet.

Fish: Brook trout fingerlings are stocked periodically. White sucker are present.

Agency: Surface Creek Ditch and Reservoir Company.

Comments: Fishing pressure is moderate. No developed campsites exist at this reservoir. Please pack out trash. Camping facilities are available nearby at Ward Lake.

Special Regulations: None.

34 WARD CREEK RESERVOIR

Access: From Cedaredge, travel north on Highway 65 10.0 miles to Ward Creek Reservoir, which is immediately adjacent to the highway on the right-hand side. There is a parking area and small picnic site next to the highway.

Size, Depth, and Elevation: 26 acres, 28 feet deep, and 9,800 feet.

Fish: Rainbow trout and white sucker. Catchable rainbow trout are stocked several times throughout the summer. Rainbow trout fingerlings are stocked periodically.

Agency: Surface Creek Ditch and Reservoir Company.

Comments: Access is easy and fishing pressure is heavy. No developed campsites exist at this reservoir. A picnic area is available for day use.

Special Regulations: None.

F WARD CREEK

Access: From Cedaredge, travel north on Highway 65 14.0 miles to where the highway crosses Ward Creek. The stream can be accessed above or below the highway at this point. The highway parallels Ward Creek for 1.0 mile upstream, which encompasses Ward Creek Reservoir, from this point. Ward Creek can also be accessed between Ward Lake and Deep Slough Reservoir, and downstream of Deep Slough.

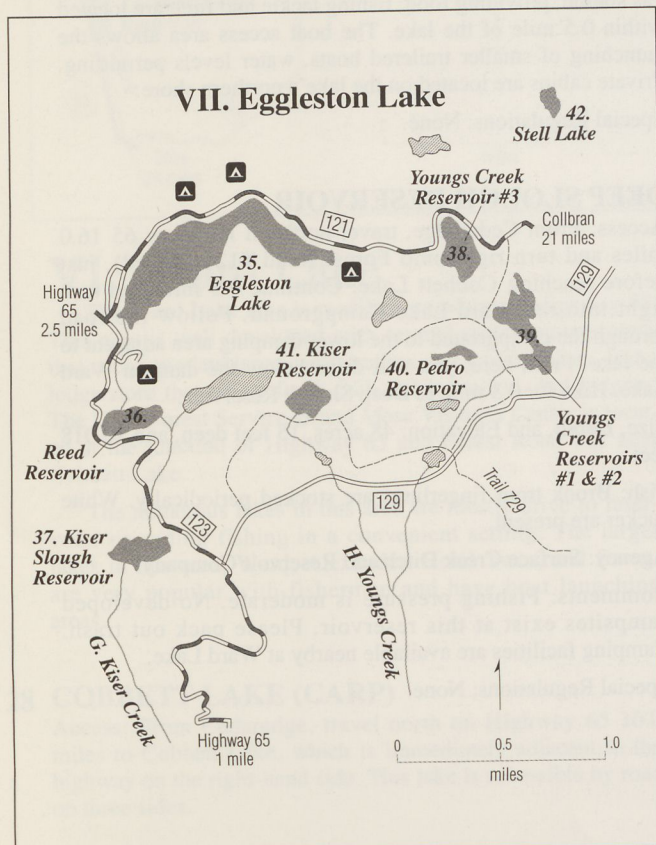
Land Status: Ward Creek is 16.8 miles long from Deep Slough Reservoir to Tongue Creek. The upper 8.1 miles are on National Forest; the lower 8.7 miles lie on private land.

Stream Width and Elevation on Public Lands: 9 feet wide and 7,220 to 10,018 feet.

Fish: Rainbow trout and white suckers. Both species enter the stream from the reservoirs on Ward Creek.

Comments: Fishing pressure is light to moderate. Much of the stream is steep and overgrown with vegetation.

Special Regulations: None.



VII. Eggleston Lake

Eggleston Lake, the second largest lake on the Grand Mesa National Forest, and the smaller lakes nearby create another extremely popular destination area for fishermen. Situated in the heart of the Grand Mesa lakes, this area offers excellent recreational opportunities including camping, hiking, boating, fishing, and four-wheeling.

Eggleston Lake has three major campgrounds along its shores that accommodate larger camp trailers and motor homes. The Crag Crest Campground serves as the eastern trailhead to the Crag Crest National Recreation Trail. Eggleston Lake also has a good gravelled boat ramp.

The other lakes in the area, accessible by car or four-wheel drive, offer camping in undeveloped settings. Be aware of road and weather conditions before traveling to the outlying lakes.

35 EGGLESTON LAKE

Access: From Cedaredge, travel north on Highway 65 16.0 miles and turn right onto Forest Road 121 (paved), just before reaching Cobbett Lake. Proceed 2.5 miles to the dam on Eggleston Lake. The road forks here and is no longer paved. Forest Road 121 continues to the left, paralleling the northern shore of Eggleston Lake for its entire length. Several access areas to the lake are present along the road. A gravelled boat ramp, on the lake's northern shore, is conveniently located off Forest Road 121, just west of the Crag Crest Trail parking lot.

Size, Depth, and Elevation: 164 acres, 52 feet deep, and 10,140 feet.

Fish: Catchable rainbow trout are stocked several times throughout the summer. Splake fingerlings are stocked periodically. Whiter sucker are present.

Agency: Surface Creek Ditch and Reservoir Company.

Comments: Fishing pressure is heavy due to the easy access and local popularity of this lake. Three major campgrounds are located along the lake's shores. The improved boat ramp easily accommodates trailered boats. Private cabins are located at the western tip of the reservoir.

Special Regulations: None.

36 REED RESERVOIR

Access: From Cedaredge, travel north on Highway 65 16.0 miles and turn right onto Forest Road 121 (paved), just before reaching Cobbett Lake. Proceed 2.5 miles to the dam on Eggleston Lake. The road forks here and is no longer paved. Take the right fork onto Forest Road 123 (unpaved) and travel 0.7 mile to Reed Reservoir, located on the left-hand side of the road.

Size, Depth, and Elevation: 23 acres, 14 feet deep, and 9,980 feet.

Fish: Rainbow trout and white sucker are present. Trout have not been stocked for several years.

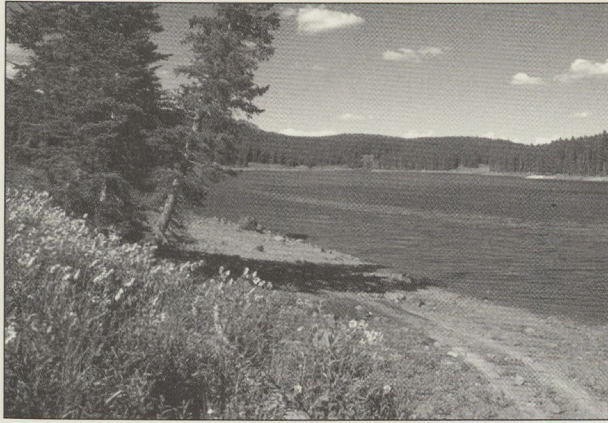
Agency: Palmer and Company.

Comments: Fishing pressure is moderate. No developed campsites exist at this reservoir. Please pack out trash. Camping facilities are available 0.5 mile to the north at Kiser Creek Campground.

Special Regulations: None.

37 KISER SLOUGH RESERVOIR

Access: From Cedaredge, travel north on Highway 65 16.0 miles and turn right onto Forest Road 121 (paved), just before reaching Cobbett Lake. Proceed east 2.5 miles to the fork in



Eggleston Lake

the road and turn right onto Forest Road 123 (unpaved). Continue 1.2 miles to Kiser Slough Reservoir, on the right-hand side of the road.

Size, Depth, and Elevation: 34 acres, 25 feet deep, and 9,827 feet.

Fish: Catchable rainbow trout are stocked several times throughout the summer. White sucker are present.

Agency: U.S. Forest Service.

Comments: Fishing pressure is heavy. This reservoir may be completely drained during drier years. No developed campsites exist at this reservoir. Please pack out trash. Camping facilities are available 1.0 mile to the north at Kiser Creek Campground.

Special Regulations: None.

38 YOUNGS CREEK RESERVOIR #3

Access: From Cedaredge, travel north on Highway 65 16.0 miles and turn right onto Forest Road 121 (paved), just before reaching Cobbett Lake. Proceed east 2.5 miles to the dam on Eggleston Lake. The road forks here and is no longer paved. Continue left on Forest Road 121 1.5 miles to Youngs Creek Reservoir #3, adjacent to the road on the right-hand side. A gravelled boat ramp on the lake's western shore is conveniently located off Forest Road #121.

Size, Depth, and Elevation: 23 acres, 16 feet deep, and 10,200 feet.

Fish: Fingerling cutthroat trout are stocked periodically.

Agency: Youngs Creek Ditch and Reservoir Company.

Comments: Fishing pressure is moderate. A boat ramp accommodates trailered boats. No developed campsites exist at this reservoir. Please pack out trash.

Special Regulations: Fishing by artificial flies and lures only. All cutthroat trout must be returned to the water immediately.

39 YOUNGS CREEK RESERVOIR #1 AND #2

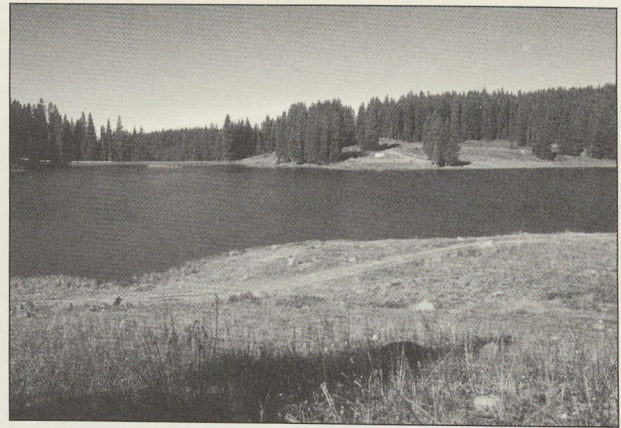
Access: From Cedaredge, travel north on Highway 65 16.0 miles and turn right onto Forest Road 121 (paved), just before reaching Cobbett Lake. Proceed east 2.5 miles to the dam on Eggleston Lake. The road forks here and is no longer paved. Continue left on Forest Road 121 3.0 miles, and turn right onto Forest Road 129. Continue 1.0 mile to the reservoir.

Size, Depth, and Elevation: 53 acres, 20 feet deep, and 10,180 feet.

Fish: Fingerling cutthroat trout are stocked periodically.

Agency: Youngs Creek Ditch and Reservoir Company.

Comments: This is a single reservoir at full pool. Recent dam



Youngs Creek Reservoir #3

repairs have necessitated draw down and the dam between #1 and #2 may be exposed. Normally, bank access is easy and fishing pressure is moderate. No developed campsites exist at this reservoir. Please pack out trash.

Special Regulations: Fishing by artificial flies and lures only. All cutthroat trout must be returned to the water immediately.

40 PEDRO RESERVOIR

Access: From Cedaredge, travel north on Highway 65 16.0 miles and turn right onto Forest Road 121 (paved) just before reaching Cobbett Lake. Proceed east 2.5 miles to the dam on Eggleston Lake. The road forks here and is no longer paved. Continue left on Forest Road 121 2.0 miles. To the right you will find a former four wheel drive road which can be used as a hiking path. Continue 0.9 mile, passing Youngs Creek reservoirs #1 and #2 to Pedro Reservoir.

Size, Depth, and Elevation: 14 acres, 18 feet deep, and 10,080 feet.

Fish: Brook trout may be present. Trout have not been stocked for several years.

Agency: Palmer and Company.

Comments: Bank access is easy; fishing pressure is light to moderate. No developed campsites exist at this reservoir. Please pack out trash.

Special Regulations: None.

41 KISER RESERVOIR

Access: From Cedaredge, travel north on Highway 65 16.0 miles and turn right onto Forest Road 121 (paved), just before reaching Cobbett Lake. Proceed east 2.5 miles to the fork in the road and turn right onto Forest Road 123 (unpaved). Continue 2.1 miles, passing Kiser Slough Reservoir, and turn left onto Forest Road 129. Proceed 0.3 mile. Bearing left, you can hike along a closed road 0.6 mile directly to Kiser Reservoir.

Size, Depth, and Elevation: 14 acres, 9 feet deep, and 10,000 feet.

Fish: Rainbow trout may be present. Trout have not been stocked for several years.

Agency: Surface Creek Ditch and Reservoir Company.

Comments: Bank access is easy; fishing pressure is light to moderate. No developed campsites exist at this reservoir. Please pack out trash.

Special Regulations: Only electric motors are allowed.

42 STELL LAKE

Access: From Cedaredge, travel north on Highway 65 16.0 miles and turn right onto Forest Road 121 (paved) just before reaching Cobbett Lake. Proceed east 2.5 miles to the fork in the road. Continue to the left on Forest Road 121 for 5.0 miles to the intersection of Forest Road 129. From there you can hike approximately 0.5 miles northward to Stell Lake. You will want to have a topographic map to help you find your way.

Size, Depth, and Elevation: 7 acres, 20 feet deep, 10,240 feet.

Fish: Rainbow or cutthroat trout may be present. Trout have not been stocked for several years.

Agency: Private permittee.

Comments: Bank access is easy; fishing pressure is light. No developed campsites exist at this reservoir. Pack out trash.

Special Regulations: None.

G KISER CREEK

Access: From Cedaredge, travel north on Highway 65 16.0 miles and turn right on Forest Road 121, just before reaching Cobbett Lake. Proceed 2.5 miles to the dam on Eggleston Lake. Kiser Creek essentially begins here and flows south through Reed and Kiser Slough reservoirs. Kiser Creek is fishable and has fairly good access along Forest Road 123 until it leaves Kiser Slough Reservoir. Below this dam, the stream becomes steep and overgrown with vegetation making streamside access difficult.

Land Status: Kiser Creek is 12.5 miles long from the dam on Eggleston Lake to Ward Creek. The upper 4.7 miles are on National Forest; the lower 7.8 miles lie on private land.

Stream Width and Elevation on Public Lands: 3 feet wide and 7520 to 10,110 feet.

Fish: Rainbow trout and white sucker enter the stream from the reservoirs on Kiser Creek.

Comments: Kiser Creek is a small shallow stream with few really good pools for trout. The stream is heavily populated with white suckers. Fishing pressure is light.

Special Regulations: None.

H YOUNGS CREEK

Access: From Cedaredge, travel north on Highway 65 16.0 miles and turn right onto Forest Road 121 (paved), just before reaching Cobbett Lake. Proceed east 2.5 miles to the dam on Eggleston Lake. The road forks here and is no longer paved. Continue left on Forest Road 121 1.5 miles to Youngs Creek Reservoir #3, adjacent to the road on the right-hand side. Youngs Creek begins below the dam of Youngs Creek Reservoir #3 and flows south through Youngs Creek reservoirs #2 and #1. A small tributary of Youngs Creek, flowing from the dam on Little Grouse Reservoir, also holds trout. These streams are accessible from Forest Road 129, as well as below the reservoirs. Below the Little Grouse Res. tributary confluence, the stream becomes steep and overgrown with vegetation making streamside access difficult.

Land Status: Youngs Creek is 10.7 miles long from the dam on Youngs Creek Reservoir #3 to Kiser Creek. The upper 3.7 miles are on National Forest; the lower 7.0 miles lie on private land.

Stream Width and Elevation on Public Lands: 3 feet wide and 7,520 to 10,165 feet.

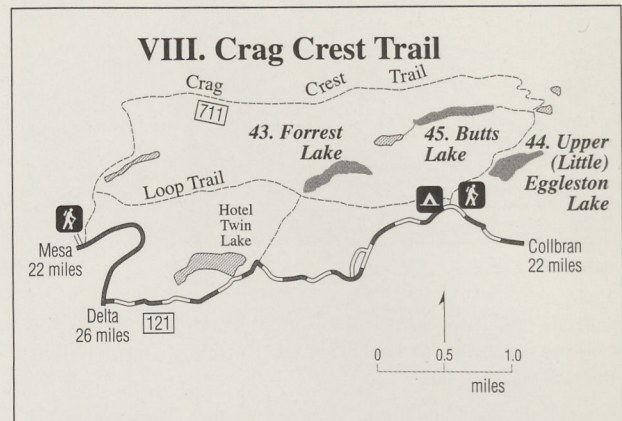
Fish: Brook trout. Brook trout are from wild spawn.

Comments: Youngs Creek is a small shallow stream with some good pools that hold trout. Fishing pressure is light.

Special Regulations: None.

VIII. Crag Crest Trail

This scenic area is highlighted by the Crag Crest Trail, designated as part of the National Recreational Trail system in 1978. Two trailheads, one at the Crag Crest Campground (Eggleston Lake) and the other off Highway 65 across from



Island Lake, are shared by the Crag Crest Trail and the lower Crag Crest Loop Trail. The Crag Crest Trail (7 miles long) is reserved for foot travel only while the Loop Trail (4 miles long) is also open to horseback use. The Loop Trail allows hikers to leave from and return to the same trailhead over a 10-mile-long circular route. Crag Crest, at 11,189 feet in elevation, is referred to as the "backbone of the Grand Mesa." It offers breathtaking vistas of distant mountain ranges and the surrounding valleys.

The three lakes along this trail, Upper Eggleston, Butts and Forrest, offer fishing for cutthroat, rainbow and brook trout. Fishing pressure is light to moderate. Please pack out trash.

43 FORREST LAKE

Access: From Cedaredge, travel north on Highway 65 16.0 miles and turn right onto Forest Road 121 (paved) just before reaching Cobbett Lake. Proceed 1.5 miles to Hotel Twin Lake, adjacent to Forest Road 121 on the left-hand side. This lake has road access to the eastern and northern shores. Turn left onto the road on the southeastern shore of Hotel Twin and walk 0.8 mile around the lake. Continue straight (to the right) and travel 0.4 mile directly to Forrest Lake. The last 0.4 mile is up a small hill.

Size, Depth, and Elevation: 33 acres, 50 feet deep, and 10,360 feet.

Fish: Fingerling cutthroat trout are stocked bi-annually. Brook trout are from wild spawn.

Agency: Surface Creek Ditch and Reservoir Company.

Comments: Fishing pressure is moderate. The Loop Trail of the Crag Crest Trail intersects the access road just below Forrest Lake. No developed campsites exist at this reservoir. Several small stores and a gas station, providing food, fishing tackle and fuel, are available nearby at Hotel Twin Lake. Please pack out trash.

Special Regulations: None.

44 UPPER (LITTLE) EGGLESTON LAKE

Access: From Cedaredge, travel north on Highway 65 16.0 miles and turn right onto Forest Road #121 (paved), just before reaching Cobbett Lake. Proceed 2.5 miles to the dam on Eggleston Lake. The road forks here and is no longer paved. Continue left on Forest Road 121, paralleling the northern shore of Eggleston Lake, to the Crag Crest Campground. Several parking sites are available. The Crag Crest National Recreation Trail begins here and is well

marked. Hike 0.4 mile on the Crag Crest Trail to Upper Eggleston Lake, which is adjacent to the trail on the right-hand side.

Size, Depth, and Elevation: 42 acres, 27 feet deep, and 10,360 feet.

Fish: Fingerling cutthroat trout are stocked bi-annually. Wild brook trout are present.

Agency: Surface Creek Ditch and Reservoir Company.

Comments: This is a hike-in-only lake. Fishing pressure is moderate. No developed campsites exist at this reservoir. Please pack out trash.

Special Regulations: None.

45 BUTTS LAKE

Access: From Cedaredge, travel north on Highway 65 16.0 miles and turn right onto Forest Road 121 (paved) just before reaching Cobbett Lake. Proceed 2.5 miles to the dam on Eggleston Lake. The road forks here and is no longer paved. Continue left on Forest Road 121, paralleling the northern shore of Eggleston Lake, to the Crag Crest Campground. Several parking sites are available. The Crag Crest National Recreation Trail begins here and is well marked. Hike 1.0 mile on the Crag Crest Trail, passing Upper Eggleston Lake, to a fork leaving the main trail to the left. Follow this left fork 0.3 mile directly to Butts Lake.

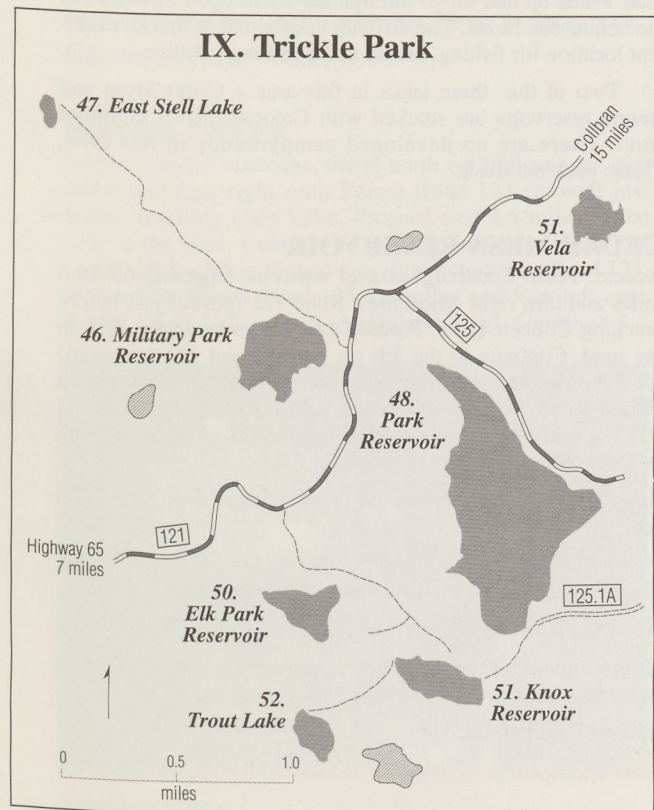
Size, Depth, and Elevation: 23 acres, 50 feet deep, and 10,500 feet.

Fish: Fingerling cutthroat trout are stocked bi-annually.

Agency: U.S. Forest Service.

Comments: This is a hike-in-only lake. Fishing pressure is light. No developed campsites exist at this reservoir. Please pack out trash.

Special Regulations: Only non-motorized watercraft are allowed.



IX. Trickle Park

The Trickle Park area offers a variety of camping and fishing opportunities in the open settings of mountain parks and meadows. This group of reservoirs provides developed and undeveloped campsites, and car or four-wheel-drive access.

Park and Vela reservoirs have small campgrounds, and both have good gravelled boat ramps for convenient boat access.

If you are looking for a bit more solitude, Military Park and East Stell reservoirs are off the beaten path.

46 MILITARY PARK RESERVOIR

Access: From Cedaredge, travel north on Highway 65 16.0 miles and turn right onto Forest Road 121 (paved) just before reaching Cobbett Lake. Proceed east 2.5 miles to the fork in the road. Continue to the left on Forest Road 121 (unpaved) for 5.0 miles. Hike along the closed four-wheel-drive road. 0.1 mile directly to Military Park Reservoir.

Size, Depth, and Elevation: 31 acres, 15 feet deep, 10,100 feet.

Fish: Colorado River cutthroat trout. Fingerling Snake River cutthroat trout are stocked periodically.

Agency: Private permittee.

Comments: The water level in this reservoir may be very low by midsummer. Fishing pressure is moderate. No developed campsites exist at this reservoir. Please pack out trash.

Special Regulations: Only electric motors are allowed.

47 EAST STELL LAKE

Access: From Cedaredge, travel north on Highway 65 16.0 miles and turn right onto Forest Road 121 (paved) just before reaching Cobbett Lake. Proceed east 2.5 miles to the fork in the road. Continue to the left on Forest Road 121 (unpaved) for 5.0 miles. Hike along the closed the four-wheel-drive road. Proceed on this road 1.1 miles, passing Military Park Reservoir, to East Stell Lake.

Size, Depth, and Elevation: 3 acres, 33 feet deep, and 10,240 feet.

Fish: Trout have not been stocked for several years.

Agency: U.S. Forest Service.

Comments: Fishing pressure is light. No developed campsites exist at this reservoir. Please pack out trash.

Special Regulations: None.

48 PARK RESERVOIR (TRICKLE)

Access: From Cedaredge, travel north on Highway 65 16.0 miles and turn right onto Forest Road 121 (paved) just before reaching Carp Lake. Proceed east 2.5 miles to the fork in the road. Continue to the left on Forest Road 121 (unpaved) for 5.5 miles and turn right onto Forest Road 125. Proceed 0.5 mile to the reservoir, on the right-hand side of the road.

Size, Depth, and Elevation: 125 acres, 22 feet deep, and 9,928 feet.

Fish: Catchable rainbow trout are stocked several times throughout the summer. Fingerling cutthroat trout are stocked annually. Brown trout are stocked periodically. White sucker are present.

Agency: Park Reservoir Company.

Comments: A developed, gravelled boat ramp is conveniently located off Forest Road 125 on the eastern shore of the reservoir. Bank access is easy and fishing pressure is heavy. A small campground is located a short distance from the lake's

eastern shore.

Special Regulations: None.

49 VELA RESERVOIR

Access: From Cedaredge, travel north on Highway 65 16.0 miles and turn right onto Forest Road 121 (paved) just before reaching Cobbett Lake. Proceed east 2.5 miles to the fork in the road. Continue to the left on Forest Road 121 (unpaved) for 6.1 miles. Vela Reservoir is adjacent to the right-hand side of the road.

Size, Depth, and Elevation: 23 acres, 23 feet deep, and 10,160 feet.

Fish: Rainbow trout. Catchable rainbow trout are stocked several times throughout the summer.

Agency: Private permittee.

Comments: The water level in this reservoir may be very low by midsummer. A good gravelled boat ramp on the west shore offers easy access for trailered boats, water levels permitting. Fishing pressure is heavy. The Trickle Park Campground is located adjacent to the boat ramp.

Special Regulations: None.

50 ELK PARK RESERVOIR

Access: From Cedaredge, travel north on Highway 65 16.0 miles and turn right onto Forest Road 121 (paved) just before reaching Cobbett Lake. Proceed east 2.5 miles to the fork in the road. Continue to the left on Forest Road 121 (unpaved) for 4.6 miles and turn right into the parking area adjacent to the road. From the parking area, hike or bike on the old four-wheel-drive road 0.4 mile to Elk Park Reservoir.

Size, Depth, and Elevation: 21 acres, 10 feet deep, and 10,065 feet.

Fish: Colorado River cutthroat trout. Fingerling cutthroat trout are stocked periodically. Brook trout are also present.

Agency: Private permittee.

Comments: Fishing pressure is moderate. No developed campsites exist at this reservoir. Please pack out trash.

Special Regulations: None.

51 KNOX RESERVOIR

Access: From Cedaredge, travel north on Highway 65 16.0 miles and turn right onto Forest Road 121 (paved) just before reaching Cobbett Lake. Proceed east 2.5 miles to the fork in the road. Continue to the left on Forest Road 121 (unpaved) for 4.6 miles and turn right into the parking area adjacent to the road. From the parking area, hike, bike, or ride on the old four-wheel-drive road 0.7 mile to the fork in the road. Follow the right fork 0.3 mile to Knox Reservoir.

Size, Depth, and Elevation: 16 acres, 10 feet deep, and 10,000 feet.

Fish: Wild brook and cutthroat trout. Neither species has been stocked in recent years.

Agency: Private permittee.

Comments: Fishing pressure is light. No developed campsites exist at this reservoir. Please pack out trash.

Special Regulations: None.

52 TROUT LAKE

Access: From Cedaredge, travel north on Highway 65 16.0 miles and turn right onto Forest Road 121 (paved) just before reaching Cobbett Lake. Proceed east 2.5 miles to the fork in

the road. Continue to the left on Forest Road 121 (unpaved) for 4.6 miles and turn right into the parking area adjacent to the road. From the parking area, hike, bike, or ride on the old four-wheel-drive road 0.7 mile to the fork in the road. Follow the right fork 0.3 mile to Knox Reservoir. From Knox Reservoir, walk southwest 0.5 mile to Trout Lake.

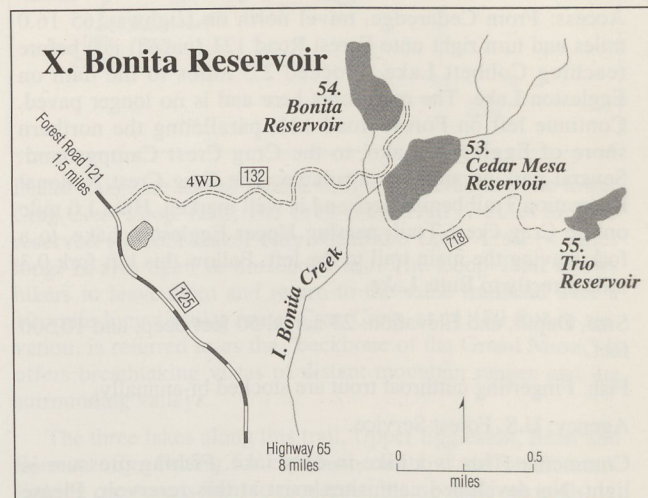
Size, Depth, and Elevation: 8 acres, 10 feet deep, and 10,280 feet.

Fish: Fingerling cutthroat trout are stocked bi-annually.

Agency: Private permittee.

Comments: Fishing pressure is light. No developed campsites exist at this reservoir. Please pack out trash.

Special Regulations: Only non-motorized watercraft are allowed.



X. Bonita Reservoir

The access to the lakes in this beautiful backcountry setting is limited to four-wheel-drive vehicles only. The challenging road winds up and down through the small open meadows in the coniferous forest. The difficult access makes this an excellent location for fishing, hiking and watching wildlife.

Two of the three lakes in this area – Cedar Mesa and Bonita reservoirs are stocked with Colorado River cutthroat trout. There are no developed campgrounds in this area. Please pack out trash.

53 CEDAR MESA RESERVOIR

Access: From Cedaredge, travel north on Highway 65 16.0 miles and turn right onto Forest Road 121 (paved) just before reaching Cobbett Lake. Proceed east 2.5 miles to the fork in the road. Continue to the left on Forest Road 121 (unpaved) for 5.5 miles and turn right onto Forest Road 125. Proceed on Forest Road 125 1.3 miles and turn left onto Forest Road #132, a four-wheel-drive road. Continue 1.3 miles to the dam of Cedar Mesa Reservoir.

Size, Depth, and Elevation: 38 acres, 22 feet deep and 9,960 feet.

Fish: Colorado River and Snake River cutthroat trout. Fingerling cutthroat trout are stocked bi-annually.

Agency: Cedar Mesa Ditch and Reservoir Company.

Comments: Fishing pressure is moderate. No developed campsites exist at this reservoir. Please pack out trash.

Special Regulations: None.

54 BONITA RESERVOIR

Access: From Cedaredge, travel north on Highway 65 16.0 miles and turn right onto Forest Road 121 (paved) just before reaching Cobbett Lake. Proceed east 2.5 miles to the fork in the road. Continue to the left on Forest Road 121 (unpaved) for 5.5 miles and turn right onto Forest Road 125. Proceed on Forest Road #125 1.3 miles and turn left onto Forest Road 132, a four-wheel-drive road. Continue 1.2 miles to the fork in the road and go left, traveling 0.2 mile to the dam of Bonita Reservoir.

Size, Depth, and Elevation: 22 acres, 12 feet deep, and 10,050 feet.

Fish: Fingerling cutthroat trout are stocked periodically.

Agency: U.S. Forest Service.

Comments: Fishing pressure is moderate. No developed campsites exist at this reservoir. Please pack out trash.

Special Regulations: Only non-motorized watercraft are allowed.

55 TRIO RESERVOIR

Access: From Cedaredge, travel north on Highway 65 16.0 miles and turn right onto Forest Road 121 (paved) just before reaching Carp Lake. Proceed east 2.5 miles to the fork in the road. Continue to the left on Forest Road 121 (unpaved) for 5.5 miles and turn right onto Forest Road 125. Proceed on Forest Road 125 1.3 miles and turn left onto Forest Road 132, a four-wheel-drive road. Continue 1.3 miles to the dam of Cedar Mesa Reservoir. From Forest Road 132 it is 1.2 miles along the trail using ATV, horseback or on foot.

Size, Depth, and Elevation: 17 acres, 24 feet deep, 10,200 feet.

Fish: Trout have not been stocked for several years.

Agency: Private permittee.

Comments: The water level in this reservoir may be very low by midsummer. Fishing pressure is moderate. No developed campsites exist at this reservoir. Please pack out trash.

Special Regulations: None.

I BONITA CREEK

Access: From Cedaredge, travel north on Highway 65 16.0 miles and turn right onto Forest Road 121 (paved) just before reaching Carp Lake. Proceed east 2.5 miles to the fork in the road. Continue to the left on Forest Road 121 (unpaved) for 5.5 miles and turn right onto Forest Road 125. Proceed on Forest Road 125 1.3 miles and turn left onto Forest Road 132, a four-wheel-drive road. Continue 1.2



Alexander Lake

miles to the fork in the road and go left, traveling 0.2 mile to the dam of Bonita Reservoir. Bonita Creek essentially begins here and flows through Cedar Mesa Reservoir. The stream, also accessible below Cedar Mesa Reservoir, parallels Forest Road 125 for 0.5 mile about 1 mile below the dam.

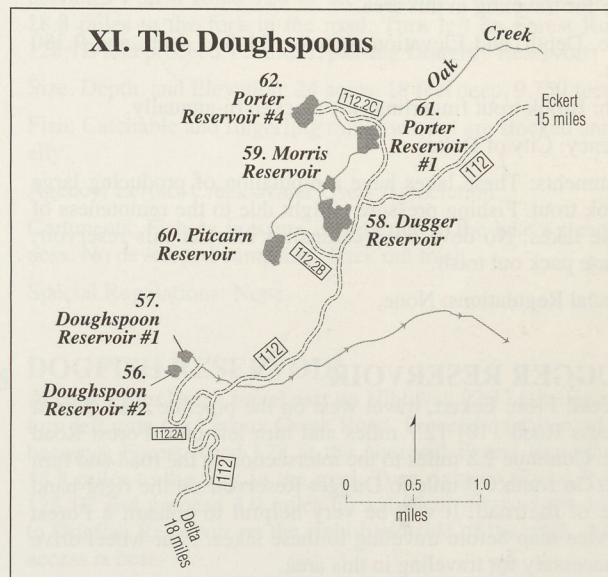
Land Status: Bonita Creek is 3.0 miles long from the dam of Cedar Mesa Reservoir to West Surface Creek. Its entire length is on the National Forest.

Stream Width and Elevation on Public Lands: 4 feet wide and 9,200 to 10,038 feet.

Fish: Colorado River cutthroat trout stocked periodically as fingerlings. Some cutthroats migrate into the creek from Cedar Mesa Reservoir.

Comments: This small stream supports a good trout population and has numerous small pools. Stream bank vegetation overhangs the channel in many areas.

Special Regulations: None.



XI. The Doughspoons

These backcountry lakes are situated under the southern rim of the Grand Mesa. They are difficult to reach because the access road is long and rough. A four-wheel drive is an absolute necessity, or better yet use an ATV or motorcycle. The bumpy roads limit the fishing pressure that these lakes receive.

Several of these reservoirs have a reputation for producing large brook trout. In addition, this secluded area offers excellent opportunities for hiking and watching wildlife.

There are no developed camping facilities in this area.

56 DOUGHSPOON RESERVOIR #2 (DELTA RESERVOIR #2)

Access: From Delta, travel north on the airport road (off of Highway 50) 1.3 miles and turn left onto the gravel road. Proceed on this road 15.0 miles (it becomes Forest Road 112 at the National Forest Boundary). Turn right on road 112.2A and travel 1.0 miles to Doughspoon Reservoir #2. It will be very helpful to consult a Forest Service map before traveling to these lakes. Four-wheel drive is necessary for traveling in this area.

Size, Depth, and Elevation: 2 acres, 5 feet deep, and 9,380 feet.

Fish: Brook trout fingerlings are stocked bi-annually.

Agency: City of Delta.

Comments: In spite of its shallowness, this small reservoir sustains trout. These lakes have a reputation of producing large brook trout. Fishing pressure is light due to the remoteness of these lakes. No developed campsites exist at this reservoir. Please pack out trash.

Special Regulations: None.

57 DOUGHSPOON RESERVOIR #1 (DELTA RESERVOIR #1)

Access: From Delta, travel north on the airport road (off of Highway 50) 1.3 miles and turn left onto the gravel road. Proceed on this road 15.7 miles (it becomes Forest Road 112 at the National Forest Boundary). Turn right on road 112.2A and travel 1.1 miles passing Doughspoon #2, to Doughspoon Reservoir #1. It will be very helpful to consult a Forest Service map before traveling to these lakes. Four-wheel drive is necessary for traveling in this area.

Size, Depth, and Elevation: 4 acres, 11 feet deep, and 9,380 feet.

Fish: Brook trout fingerlings are stocked bi-annually.

Agency: City of Delta.

Comments: These lakes have a reputation of producing large brook trout. Fishing pressure is light due to the remoteness of these lakes. No developed campsites exist at this reservoir. Please pack out trash.

Special Regulations: None.

58 DUGGER RESERVOIR

Access: From Eckert, travel west on the pipeline road (Forest Access Road 110) 12.7 miles and turn left onto Forest Road 112. Continue 2.8 miles to the intersection in the road and turn left. Go south 0.3 mile to Dugger Reservoir on the right-hand side of the road. It will be very helpful to consult a Forest Service map before traveling to these lakes. Four-wheel drive is necessary for traveling in this area.

Size, Depth, and Elevation: 17 acres, 15 feet deep, and 9,180 feet.

Fish: Brook trout fingerlings are stocked bi-annually.

Agency: U.S. Forest Service.

Comments: This reservoir is drained periodically. Fishing pressure is moderate due to the remoteness of these lakes. No developed campsites exist at this reservoir. Please pack out trash.

Special Regulations: None.

59 MORRIS RESERVOIR

Access: From Eckert, travel west on the pipeline road (Forest Access Road #110) 12.7 miles and turn left onto Forest Road #112. Continue 2.8 miles to the intersection in the road and proceed straight 0.3 mile directly to the reservoir. It will be very helpful to consult a Forest Service map before traveling to these lakes. Four-wheel drive is necessary for traveling in this area.

Size, Depth, and Elevation: 3 acres, 14 feet deep, and 9,180 feet.

Fish: Brook trout fingerlings are stocked bi-annually.

Agency: U.S. Forest Service.

Comments: Fishing pressure is moderate due to the remoteness of these lakes. No developed campsites exist at this reservoir. Please pack out trash.

Special Regulations: None.

60 PITCAIRN RESERVOIR

Access: From Eckert, travel west on the pipeline road Forest Access Road 110 (Pipeline Rd.) 12.7 miles and turn left onto Forest Road 112 (Doughspoon Rd.). Continue 2.8 miles to the intersection in the road and turn left continuing on 112 to Forest Road 112.2B. Turn left and travel 0.7 mile to Pitcairn Reservoir. Consult a Forest Service map before traveling to these lakes. Four-wheel drive is necessary.

Size, Depth, and Elevation: 11 acres, 9 feet deep, and 9,380 feet.

Fish: Brook trout fingerlings are stocked periodically.

Agency: U.S. Forest Service.

Comments: Bank fishing is easy. This reservoir is drained periodically. Fishing pressure is light due to the remoteness of this lake. No developed campsites exist at this reservoir. Please pack out trash.

Special Regulations: None.

61 PORTER RESERVOIR #1 (BIG DAVIES RES.)

Access: From Eckert, travel west on the pipeline road (Forest Access Road 110) 12.7 miles and turn left onto Forest Road 112. Continue 2.8 miles to the intersection in the road and turn right on road 112.2C. Proceed 0.5 mile to Porter Reservoir #1 adjacent to the road on the left-hand side. It will be very helpful to consult a Forest Service map before traveling to these lakes. Four-wheel drive is necessary for traveling in this area.

Size, Depth, and Elevation: 11 acres, 23 feet deep, and 9,100 feet.

Fish: Brook trout fingerlings are stocked bi-annually.

Agency: U.S. Forest Service.

Comments: Fishing pressure is moderate due to the remoteness of these lakes. No developed campsites. Pack out trash.

Special Regulations: None.

62 PORTER RESERVOIR #4 (LITTLE DAVIES)

Access: From Eckert, travel west on the pipeline road (Forest Access Road 110) 12.7 miles and turn left onto Forest Road 112. Continue 2.8 miles to the intersection in the road and turn right on road 112.2C. Proceed 1.0 mile, passing Porter Reservoir #1, directly to Porter Reservoir #4. It will be very helpful to consult a Forest Service map before traveling to these lakes. Four-wheel drive is necessary for traveling in this area.

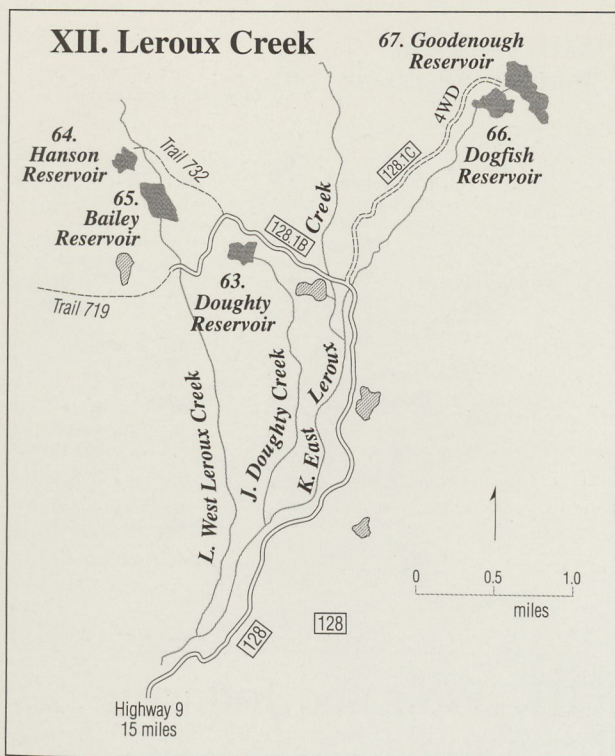
Size, Depth, and Elevation: 13 acres, 10 feet deep, and 9,380 feet.

Fish: Brook trout fingerlings are stocked bi-annually.

Agency: U.S. Forest Service.

Comments: Fishing pressure is moderate due to the remoteness of these lakes. No developed campsites exist at this reservoir. Please pack out trash.

Special Regulations: None.



XII. Leroux Creek

The Leroux Creek watershed is relatively large and its water is used to irrigate the fruit orchards that you pass through on your way to the Grand Mesa from Delta. Leroux Creek's major tributaries lie within the Grand Mesa National Forest. West and East Leroux creeks, and Doughty Creek, supply most of the water Leroux Creek itself lies almost entirely on private land.

In addition to the fishing opportunity offered by Leroux Creek's tributaries, this area has several small reservoirs that contain good populations of rainbow trout. The fishing pressure in this area is light to moderate.

Vehicles with good ground clearance are recommended for traveling the roads in this area. Four-wheel drive is strongly recommended if roads are wet.

Informal campsites are limited in this area. Please pack out trash.

63 DOUGHTY RESERVOIR

Access: From Delta, travel east on Highway 92 17.0 miles and turn left onto the Leroux Creek Road. Proceed on this road (it becomes Forest Road 128 at the National Forest Boundary) 18.8 miles to the fork in the road. Turn left here, onto Forest Road 128.1B, and continue 1.0 mile to Doughty Reservoir on the left-hand side of the road.

Size, Depth, and Elevation: 24 acres, 18 feet deep, and 9,750 feet.

Fish: Brook trout fingerlings are stocked periodically.

Agency: Leroux Creek Water Users Association.

Comments: Fishing pressure is moderate due to the area's remoteness. No developed campsites exist at this reservoir. Please pack out trash.

Special Regulations: None.

64 HANSON RESERVOIR

Access: From Delta, travel east on Highway 92 17.0 miles and

turn left onto the Leroux Creek Road. Proceed on this road (it becomes Forest Road 128 at the National Forest Boundary) 18.8 miles to the fork in the road. Turn left (continuing on Forest Road 128.1B) and proceed 1.5 miles, passing Doughty Reservoir. Forest trail 732 leads 0.5 miles to Hanson Reservoir.

Size, Depth, and Elevation: 24 acres, 18 feet deep, 9,750 feet.

Fish: Trout have not been stocked for several years.

Agency: Leroux Creek Water Users Association.

Comments: Hanson reservoir is drawn down periodically. Fishing pressure is light due to the lake's remoteness. No developed campsites. Pack out trash.

Special Regulations: None.

65 BAILEY RESERVOIR

Access: From Delta, travel east on Highway 92 17.0 miles and turn left onto the Leroux Creek Road. Proceed on this road (it becomes Forest Road 128 at the National Forest Boundary) 18.8 miles to the fork in the road. Turn left on Forest Road 128.1B and proceed 1.5 miles, passing Doughty Reservoir.

Size, Depth, and Elevation: 24 acres, 18 feet deep, 9,750 feet.

Fish: Catchable and fingerling rainbow trout are stocked annually.

Agency: Leroux Creek Water Users Association.

Comments: Fishing pressure is light due to the lake's remoteness. No developed campsites. Pack out trash.

Special Regulations: None.

66 DOGFISH RESERVOIR

Access: From Delta, travel east on Highway 92 17.0 miles and turn left onto the Leroux Creek Road. Proceed on this road (it becomes Forest Road 128 at the National Forest Boundary) 18.8 miles to the fork in the road. Turn right on Forest Road 128.1C and proceed 3.0 miles by a difficult four-wheel drive to Dogfish Reservoir on the right-hand side of the road. ATV access is best.

Size, Depth, and Elevation: 38 acres, 18 feet deep, and 10,440 feet.

Fish: Rainbow trout fingerlings are stocked periodically.

Agency: Leroux Creek Water Users Association.

Comments: Fishing pressure is light due to the lake's remoteness. No developed campsites. Please pack out trash.

Special Regulations: Only electric motors are allowed.

67 GOODENOUGH RESERVOIR

Access: From Delta, travel east on Highway 92 17.0 miles and turn left onto the Leroux Creek Road. Proceed on this road (it becomes Forest Road 128 at the National Forest Boundary) 18.8 miles to the fork in the road. Turn right, continuing on Forest Road 128, and proceed 3.0 miles by a difficult four-wheel drive to Goodenough Reservoir on the left-hand side of the road. ATV access would be easier.

Size, Depth, and Elevation: 54 acres, 12 feet deep, and 10,500 feet.

Fish: Rainbow trout fingerlings are stocked annually.

Agency: Leroux Water Users Association.

Comments: Fishing pressure is light. No developed campsites exist at this reservoir. Please pack out trash.

Special Regulations: Only electric motors are allowed.

J DOUGHTY CREEK

Access: From Delta, travel east on Highway 92 17.0 miles and turn left onto the Leroux Creek Road. Proceed on this road (it becomes Forest Road 128 at the National Forest Boundary) 18.8 miles to the fork in the road. Turn left here onto Forest Road 128.1B and continue 1.0 mile to Doughty Reservoir on the left-hand side of the road. Doughty Creek flows from the dam.

Land Status: Doughty Creek is 3.0 miles long from the dam of Doughty Reservoir to East Leroux Creek. Its entire length is on the National Forest.

Stream Width and Elevation on Public Lands: 5 feet wide and 8,700 to 9,730 feet.

Fish: Wild brook trout are present.

Comments: This small stream has many good pools. Dense streamside vegetation overhangs the stream, providing good cover, but it makes fishing difficult in spots.

Special Regulations: None.

K EAST LEROUX CREEK

Access: From Delta, travel east on Highway 92 17.0 miles and turn left onto the Leroux Creek Road. Proceed on this road (it becomes Forest Road 128 at the National Forest Boundary) 18.8 miles to the fork in the road. Turn right on Forest Road 128.1C and proceed 3.0 miles by four-wheel drive to Dogfish Reservoir on the right-hand side of the road. East Leroux Creek flows from the dam.

Land Status: East Leroux Creek is 6.1 miles long from the dam of Dogfish Reservoir to Leroux Creek. Its entire length it is on the National Forest.

Stream Width and Elevation on Public Lands: 8 feet wide and 8,300 to 10,400 feet.

Fish: Rainbow trout enter the stream from Dogfish Reservoir. Cutthroat trout are from wild spawn.

Comments: East Leroux Creek is a larger stream with many good pools. Good streamside cover shades the stream, but it is accessible to anglers in many spots.

Special Regulations: None.

L WEST LEROUX CREEK

Access: From Delta, travel east on Highway 92 17.0 miles and turn left onto the Leroux Creek Road. Proceed on this road (it becomes Forest Road 128 at the National Forest Boundary) 18.8 miles to the fork in the road. Turn left on Forest Road 128.1b and proceed 2.1 miles, passing Doughty Reservoir (bearing left) to where the road crosses West Leroux Creek.

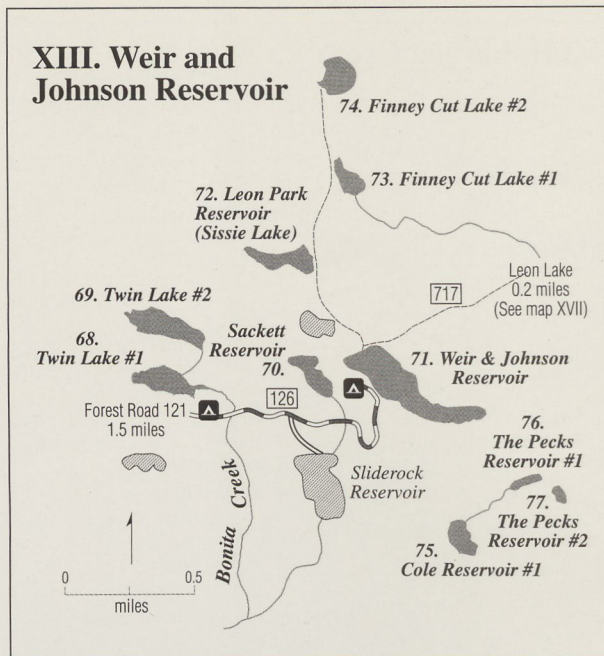
Land Status: West Leroux Creek is 2.5 miles long from its intersection with Forest Road #121 to Leroux Creek. Its entire length is on the National Forest.

Stream Width and Elevation on Public Lands: 6 feet wide and 8,300 to 9,700 feet.

Fish: Fingerling Colorado River cutthroat trout are stocked periodically. Rainbow trout probably access the stream from Doughty Creek.

Comments: This small stream has many good pools. Dense streamside vegetation limits fishing access in some reaches.

Special Regulations: None.



XIII. Weir and Johnson Reservoir

Our reference point for this fishing area is commonly mistaken to be two separate lakes. You will find that "Weir and Johnson Reservoir" is actually a single body of water. This area includes the Grand Mesa's highest fishing lakes, as well as its highest point, Leon Peak.

Leon Peak, at 11,231 feet, is the single best reference point for the divide that separates the drainages and reservoirs on the north side of the Grand Mesa from those on the south side. The streams that flow north and east feed the mighty Colorado River as it struggles along towards the Gulf of California. The streams flowing south and west drain into the Gunnison River, which joins the Colorado River near Grand Junction.

This area offers a variety of fishing opportunities and is very popular. There are chances to fish for cutthroat, rainbow and brook trout. The developed campgrounds at Weir and Johnson and Sackett add to the convenience of fishing in this area. The Finney Cuts are hike-in-only lakes provide getaways from the heavily-visited lakes. The trails to the outlying lakes are incredibly scenic and offer good opportunities for watching wildlife.

68 TWIN LAKE #1

Access: From Cedaredge, travel north on Highway 65 16.0 miles and turn right onto Forest Road 21 (paved) just before reaching Cobbett Lake. Proceed east 2.5 miles to the fork in the road. Continue to the left on Forest Road 121 (unpaved) for 9.0 miles and turn right onto the Weir and Johnson Road (Forest Road 126). Proceed 1.6 miles and turn left onto the dirt road. Walk 0.3 mile to Twin Lake #1.

Size, Depth, and Elevation: 23 acres, 42 feet deep, and 10,400 feet.

Fish: Fingerling rainbow trout are stocked annually.

Agency: Private permittee.

Comments: This area is very popular locally and this lake receives heavy fishing pressure. A developed campground and restrooms are available on south shore.

Special Regulations: None.

69 TWIN LAKE #2

Access: From Cedaredge, travel north on Highway 65 16.0 miles and turn right onto Forest Road 121 (paved) just before reaching Cobbett Lake. Proceed east 2.5 miles to the fork in the road. Continue to the left on Forest Road 121 (unpaved) for 9.0 miles and turn right onto the Weir and Johnson Road (Forest Road 126). Proceed 1.6 miles and turn left onto the dirt road. Walk 0.6 mile, passing Twin Lake #1, to Twin Lake #2.

Size, Depth, and Elevation: 21 acres, 23 feet deep, and 10,400 feet.

Fish: Fingerling rainbow trout are stocked annually.

Agency: Private permittee.

Comments: This area is very popular locally and this lake receives heavy fishing pressure. A developed campground and restrooms are available nearby at Twin Lake #1.

Special Regulations: None.

70 SACKETT RESERVOIR

Access: From Cedaredge, travel north on Highway 65 16.0 miles and turn right onto Forest Road 121 (paved) just before reaching Cobbett Lake. Proceed east 2.5 miles to the fork in the road. Continue to the left on Forest Road 121 (unpaved) for 9.0 miles and turn right onto the Weir and Johnson Road (Forest Road 126). Proceed 2.8 miles to Sackett Reservoir, located directly west of Weir and Johnson Reservoir.

Size, Depth, and Elevation: 10 acres, 24 feet deep, and 10,460 feet.

Fish: Catchable rainbow trout are stocked annually. Wild brook trout are present.

Agency: Private permittee.

Comments: This area is very popular locally and this lake receives heavy fishing pressure. A developed campground and restrooms are available nearby at the Wier and Johnson Campground. An unimproved boat launching area on the lake's eastern shore is conveniently located right off the road.

Special Regulations: Only non-motorized watercraft are allowed.

71 WEIR AND JOHNSON RESERVOIR

Access: From Cedaredge, travel north on Highway 65 16.0 miles and turn right onto Forest Road 121 (paved) just before reaching Carp Lake. Proceed east 2.5 miles to the fork in the road. Continue to the left on Forest Road 121 (unpaved) for 9.0 miles and turn right onto the Weir and Johnson Road (Forest Road 126). Proceed 2.8 miles directly to Weir And Johnson Reservoir.

Size, Depth, and Elevation: 47 acres, 55 feet deep, and 10,480 feet.

Fish: Fingerling cutthroat or rainbow trout are stocked annually. Wild brook trout are present.

Agency: Private permittee.

Comments: This area is very popular locally and this lake receives heavy fishing pressure. A developed campground and restrooms are available nearby at the Wier and Johnson Campground. An unimproved boat launching area is usable by those skilled in trailer use, water levels permitting.

Special Regulations: None.



Land O' Lake view

72 LEON PEAK RESERVOIR (SISSIE LAKE)

Access: From Cedaredge, travel north on Highway 65 16.0 miles and turn right onto Forest Road 121 (paved) just before reaching Cobbett Lake. Proceed east 2.5 miles to the fork in the road. Continue to the left on Forest Road 121 (unpaved) for 9.0 mile and turn right onto the Weir and Johnson Road (Forest Road 126). Proceed 2.8 miles directly to Weir And Johnson Reservoir. Hike across the dam on Weir and Johnson Reservoir to the fork in the trail and turn left. Proceed 0.5 mile to Leon Peak Reservoir on the left-hand side of the trail.

Size, Depth, and Elevation: 9 acres, 20 feet deep, and 10,640 feet.

Fish: Trout have not been stocked for several years.

Agency: U.S. Forest Service.

Comments: Leon Peak Reservoir is the highest lake on the Grand Mesa managed for trout. This is a hike-in-only lake. Fishing pressure is light. No developed campsites exist at this reservoir. Please pack out trash.

Special Regulations: None.

73 FINNEY CUT LAKE #1

Access: From Cedaredge, travel north on Highway 65 16.0 miles and turn right onto Forest Road 121 (paved) just before reaching Cobbett Lake. Proceed east 2.5 miles to the fork in the road. Continue to the left on Forest Road 121 (unpaved) for 9.0 miles and turn right onto the Weir and Johnson Road (Forest Road 126). Proceed 2.8 miles directly to Weir And Johnson Reservoir. Hike across the dam on Weir and Johnson Reservoir to the fork in the trail and turn left. Proceed 1.0 mile, passing Leon Peak Reservoir, to Finney Cut Lake #1 on the right-hand side of the trail.

Size, Depth, and Elevation: 3 acres, 9 feet deep, and 10,420 feet.

Fish: Fingerling cutthroat trout are stocked bi-annually.

Agency: U.S. Forest Service.

Comments: Finney Cut Lake #1 is a natural lake. This is a hike-in-only lake. Fishing pressure is light. No developed campsites exist at this reservoir. Please pack out trash.

Special Regulations: None.

74 FINNEY CUT LAKE #2

Access: From Cedaredge, travel north on Highway 65 16.0 miles and turn right onto Forest Road 121 (paved) just before reaching Cobbett Lake. Proceed east 2.5 miles to the fork in the road. Continue to the left on Forest Road 121 (unpaved) for 9.0 miles and turn right onto the Weir and Johnson Road



Weir and Johnson Reservoir

(Forest Road 126). Proceed 2.8 miles directly to Weir and Johnson Reservoir. Hike across the dam on Weir and Johnson Reservoir to the fork in the trail and turn left. Proceed 1.5 miles, passing Leon Peak Reservoir and Finney Cut Lake #1, directly to Finney Cut Lake #2.

Size, Depth, and Elevation: 9 acres, 36 feet deep, and 10,490 feet.

Fish: Fingerling cutthroat trout are stocked bi-annually.

Agency: U.S. Forest Service.

Comments: This is a hike-in-only lake. Fishing pressure is light. No developed campsites exist at this reservoir. Please pack out trash.

Special Regulations: None.

75 COLE RESERVOIR #1

Access: From Cedaredge, travel north on Highway 65 16.0 miles and turn right onto Forest Road 121 (paved) just before reaching Cobbett Lake. Proceed east 2.5 miles to the fork in the road. Continue to the left on Forest Road 121 (unpaved) for 9.0 miles and turn right onto the Weir and Johnson Road (Forest Road 126). Proceed 2.5 miles and turn right into the parking area at Slide Rock Reservoir. Hike 0.7 mile east around Slide Rock Reservoir (intermittent) to Cole Reservoir #1.

Size, Depth, and Elevation: 8 acres, 52 feet deep, and 10,420 feet.

Fish: Fingerling cutthroat trout are stocked periodically.

Agency: Private permittee.

Comments: The water level in this reservoir fluctuates greatly. This is a hike-in-only lake. Fishing pressure is light. No developed campsites exist at this reservoir. Please pack out trash.

Special Regulations: None.

76 THE PECKS RESERVOIR #1

Access: From Cedaredge, travel north on Highway 65 16.0 miles and turn right onto Forest Road 121 (paved) just before reaching Cobbett Lake. Proceed east 2.5 miles to the fork in the road. Continue to the left on Forest Road 121 (unpaved) for 9.0 miles and turn right onto the Weir and Johnson Road (Forest Road 126). Proceed 2.5 miles and turn right into the parking area at Slide Rock Reservoir. Hike east 0.8 mile, around Slide Rock Reservoir (intermittent) and past Cole Reservoir #1 to The Pecks Reservoir #1.

Size, Depth, and Elevation: 3 acres, 28 feet deep, and 10,520

feet.

Fish: Trout have not been stocked in recent years.

Agency: U.S. Forest Service.

Comments: This is a hike-in-only lake. Fishing pressure is light. No developed campsites exist at this reservoir. Please pack out trash.

Special Regulations: None.

77 THE PECKS RESERVOIR #2

Access: From Cedaredge, travel north on Highway 65 16.0 miles and turn right onto Forest Road 121 (paved) just before reaching Carp Lake. Proceed east 2.5 miles to the fork in the road. Continue to the left on Forest Road 121 (unpaved) for 9.0 miles and turn right onto the Weir and Johnson Road (Forest Road 126). Proceed 2.5 miles and turn right into the parking area at Slide Rock Reservoir. Hike east 0.8 mile around Slide Rock Reservoir (intermittent) and past Cole Reservoir #1 and The Pecks Reservoir #1 to The Pecks Reservoir #2.

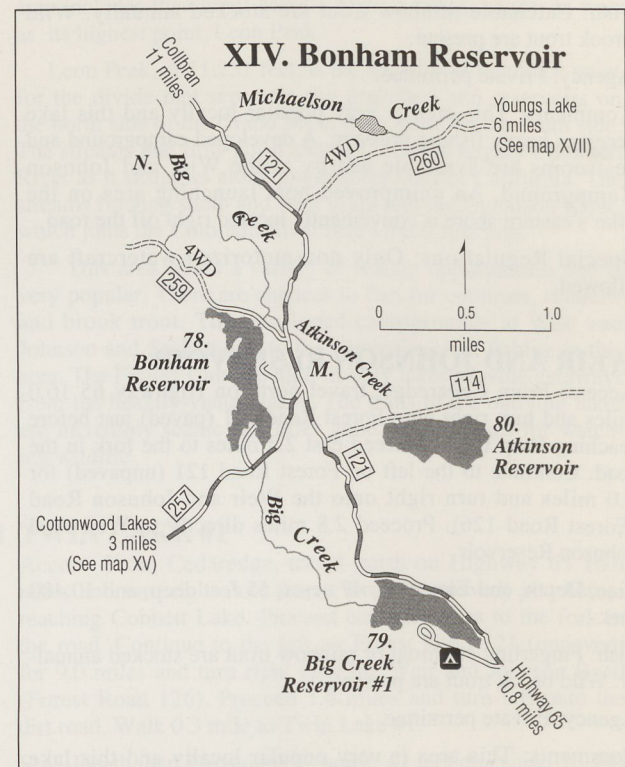
Size, Depth, and Elevation: 4 acres, 17 feet deep, and 10,520 feet.

Fish: Trout have not been stocked in recent years.

Agency: U.S. Forest Service.

Comments: This is a hike-in-only lake. Fishing pressure is light. No developed campsites exist at this reservoir. Please pack out trash.

Special Regulations: None.



XIV. Bonham Reservoir

Bonham Reservoir is a well-known reference point on the Grand Mesa. The road signs you pass travelling from Collbran direct recreationists to Bonham Reservoir, which sits at the junction of Forest Roads 121 and 257.

Proceeding south past Bonham Reservoir on Forest Road 121 takes you over the divide of the Grand Mesa to the numerous lakes on the Mesa's southern benches. This divide,

just south of Big Creek Reservoir, separates Grand Mesa's north-flowing and south-flowing drainages which feed the Colorado and Gunnison Rivers. Turning west at Forest Road 257 provides access to another 10 reservoirs holding trout.

The Bureau of Reclamation manages the reservoirs in this area as well as those in the Cottonwood Lakes area. The Bureau stores and releases water from these reservoirs to generate electricity at their Upper and Lower Molina Power Plants. Bonham reservoir is essentially operated as a forebay for the Upper Molina Power plant. A large conduit on the west end of the Bonham Reservoir dam collects the water and the Grand Mesa provides the elevation needed to send the water rushing down to the turbines located over 2,000 feet down the mountainside.

Access to Bonham and Big Creek reservoirs is easy; four-wheel drive may be needed to reach Atkinson Reservoir, depending on weather and road conditions. A developed campground at Big Creek Reservoir adds to the area's popularity. Big Creek, particularly between Big Creek and Bonham reservoirs, helps absorb the heavy fishing pressure that this area receives. IN addition to Colorado River cutthroat trout, anglers will find a few wild arctic grayling in Bonham Reservoir and Big Creek upstream.

78 BONHAM RESERVOIR

Access: From Collbran, travel south on Forest Access Road 121 (the first 7.0 miles of this drive is paved) 11.5 miles to Bonham Reservoir. The northern end of the lake can be accessed by turning right (Forest Road 259) and driving through the Bureau of Reclamation facility. Driving to the southern end of the reservoir and turning right onto Forest Road #121 takes you to several parking areas located a short distance from the reservoir.

Size, Depth, and Elevation: 88 acres, 48 feet deep, and 9,755 feet.

Fish: Catchable rainbow trout and fingerling brown and cutthroat trout are stocked periodically. Wild arctic grayling and fathead minnows are present

Agency: Bureau of Reclamation.

Comments: This popular lake receives heavy fishing pressure. A picnic ground and the lake's location at the junction of two major Forest Access Roads adds to Bonham Reservoir's popularity. Trout fishing has been affected by the abundance of white sucker.

Special Regulations: None.

79 BIG CREEK RESERVOIR #1

Access: From Collbran, travel south on Forest Access Road 121 (the first 7.0 miles of this drive is paved) 13.9 miles, passing Bonham Reservoir, directly to Big Creek Reservoir. Proceed 0.3 mile around the lake and turn right to access the campground and boat ramp.

Size, Depth, and Elevation: 63 acres, 22 feet deep, 10,120 feet.

Fish: Fingerling cutthroat trout are stocked annually.

Agency: Bureau of Reclamation.

Comments: Fingerling cutthroat trout are stocked annually.

Special Regulations: None.

80 ATKINSON RESERVOIR

Access: From Collbran, travel south on Forest Access Road 121 (the first 7.0 miles of this drive is paved) 12.0 miles to the junction of Forest Road 257 at the southern end of Bonham Reservoir. From here, continue straight on Forest Road 121

0.4 mile and turn left on Forest Road 114 for 0.6 mile. Then turn right and go up the hill a short distance to the reservoir. There is a primitive boat ramp.

Size, Depth, and Elevation: 87 acres, 30 feet deep, and 10,120 feet.

Fish: Fingerling Colorado River cutthroat trout are stocked annually. Wild rainbow trout are present.

Agency: Bureau of Reclamation.

Comments: This reservoir is susceptible to winterkill. Bank access is easy and fishing pressure is heavy. No developed campsites exist at this reservoir. Please pack out trash.

Special Regulations: None.

M ATKINSON CREEK

Access: From Collbran, travel south on Forest Access Road 121 (the first 7.0 miles of this drive is paved) 11.5 miles to the northern access to Bonham Reservoir (Forest Road 259). Atkinson Creek crosses the main road here and flows into Big Creek, just below the dam on Bonham Reservoir. You could also hike up Atkinson Creek from the main road or drive to Atkinson Reservoir and hike downstream below the dam. Atkinson Creek above Atkinson Reservoir is very small.

Land Status: Atkinson Creek 1.5 miles long from the dam of Atkinson Reservoir to Big Creek. Its entire length is on the National Forest.

Stream Width and Elevation on Public Lands: 3 feet wide and 9,680 to 10,090 feet.

Fish: Rainbow and cutthroat trout enter the stream from Atkinson Reservoir.

Comments: This stream is shallow, but it has some good pools. Streamside access is easy and fishing pressure is moderate.

Special Regulations: None.

N BIG CREEK

Access: From Collbran, travel south on Forest Access Road 121 (the first 7.0 miles of this drive is paved) 11.5 miles and turn right on road 259, accessing the northern end of Bonham Reservoir where the road actually crosses the dam. Fishing Big Creek below Bonham Reservoir and is possible, but difficult due to the steepness of the banks. Big Creek can also be accessed between the dam of Big Creek Reservoir and the upper end of Bonham Reservoir. The stream in this area is accessed by hiking. A popular spot to fish Big Creek is near the Forest Road 257 crossing.

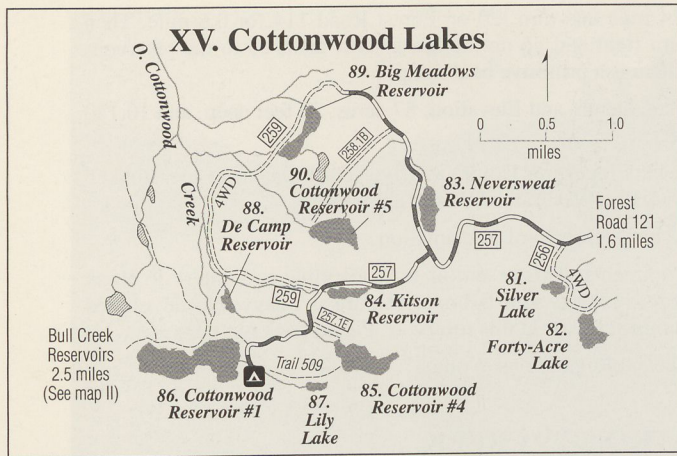
Land Status: Big Creek is 14.5 miles long from the dam of Big Creek Reservoir to Plateau Creek. The upper 4.0 miles lie within the National Forest. The lower 8.5 miles lie on private land. Obtain permission before accessing the stream on private land!

Stream Width and Elevation on Public Lands: 8 feet wide and 8,400 to 10,100 feet.

Fish: Cutthroat, brook and rainbow trout are found above and below Bonham Reservoir. Arctic grayling are found above Bonham Reservoir

Comments: The stream flows through a rock bed below the Bonham Reservoir dam. It is difficult to fish where it flows in the steep-sided draw with dense vegetation. Fishing pressure in this area is light. Above Bonham Reservoir the stream flows through a large meadow and has many nice pools. Fishing pressure in this area is moderate.

Special Regulations: None.



XV. Cottonwood Lakes

The Cottonwood Lakes area sits on a large bench to the north of Crag Crest. It offers excellent fishing opportunity in 10 drive-to lakes. Most of the lakes are easily accessible on the upgraded gravel roads. Four-wheel drive is recommended for accessing a couple of the outlying lakes.

The lakes and streams in this area also supply water to the two Bureau of Reclamation hydroelectric power plants near Molina.

This area is extremely popular locally and most of the lakes receive heavy fishing pressure. Cottonwood Lake #1, the largest reservoir on the north side of the National Forest, has a gravelled boat ramp and a large campground. Small boats and canoes are used by many fishermen to pursue trout in many of these lakes. Numerous informal camping spots are available in this area.

Introduction of splake in Cottonwood Lake #1 diversifies the options for anglers in this outstanding group of lakes. Arctic grayling seem to have disappeared from Silver and Kitson reservoirs.

81 SILVER LAKE

Access: From Collbran, travel south on Forest Access Road 121 (the first 7.0 miles of this drive is paved) 12.0 miles to the junction of Forest Road #257, at the southern end of Bonham Reservoir, and turn right. Proceed west 1.6 miles and turn left onto the four-wheel-drive road 256. Continue 0.3 mile to Silver Lake on the right-hand side of the road.

Size, Depth, and Elevation: 12 acres, 20 feet deep, and 10,176 feet.

Fish: Fingerling cutthroat trout are stocked annually. Wild brook trout are present.

Agency: Bureau of Reclamation.

Comments: Bank access is easy and fishing pressure is heavy. No developed campsites exist at this reservoir. Please pack out trash.

Special Regulations: Fishing by artificial flies and lures only. The bag, possession, and size limit for trout is 2 fish, 16 inches or longer. Only electric motors are allowed.

82 FORTY-ACRE LAKE

Access: From Collbran, travel south on Forest Access Road 121 (the first 7.0 miles of this drive is paved) 12.0 miles to the junction of Forest Road #257, at the southern end of Bonham Reservoir, and turn right. Proceed west 1.6 miles and turn left onto a very rough four-wheel-drive road 256. Continue 0.8 mile, passing Silver Lake, to Forty-Acre Lake on the right-

hand side of the road.

Size, Depth, and Elevation: 17 acres, 24 feet deep, and 10,160 feet.

Fish: Wild brook trout are present. Fingerling cutthroat trout are stocked periodically

Agency: Bureau of Reclamation.

Comments: This lake has a reputation for producing large but difficult-to-catch brookies. Fishing pressure is moderate. No developed campsites exist at this reservoir. Please pack out trash.

Special Regulations: Only electric motors are allowed.

83 NEVERSWEAT RESERVOIR

Access: From Collbran, travel south on Forest Access Road 121 (the first 7.0 miles of this drive is paved) 12.0 miles to the junction of Forest Road 257, at the southern end of Bonham Reservoir, and turn right. Proceed west 3.3 miles (you will pass above Neversweat Reservoir as you drop down the hill) to the fork in the road and turn right onto Forest Road 258. Continue 0.3 mile to Neversweat Reservoir adjacent to the road on the right-hand side.

Size, Depth, and Elevation: 19 acres, 15 feet deep, and 10,070 feet.

Fish: Catchable rainbow trout are stocked annually. Fingerling rainbow trout are stocked periodically.

Agency: Bureau of Reclamation.

Comments: An unimproved boat launching area is usable by those skilled in trailer use, water levels permitting. Fishing pressure is light. No developed campsites exist at this reservoir. Please pack out trash.

Special Regulations: None.

84 KITSON RESERVOIR

Access: From Collbran, travel south on Forest Access Road 121 (the first 7.0 miles of this drive is paved) 12.0 miles to the junction of Forest Road 257, at the southern end of Bonham Reservoir, and turn right. Proceed west 3.3 miles to the fork in the road and turn left, continuing on Forest Road 257. Travel 0.6 mile to Kitson Reservoir, on the left-hand side of the road.

Size, Depth, and Elevation: 18 acres, 13 feet deep, and 10,040 feet.

Fish: Catchable rainbow and fingerling cutthroat trout are stocked periodically. Wild brook trout are present.

Agency: Bureau of Reclamation.

Comments: An unimproved boat launching area is usable by those skilled in trailer use, water levels permitting. Bank access is easy and fishing pressure is moderate. No developed campsites exist at this reservoir. Please pack out trash.

Special Regulations: Bag, possession limit and minimum size for grayling is 2 fish, 16 inches or longer.

85 COTTONWOOD RESERVOIR #4

Access: From Collbran, travel south on Forest Access Road #121 (the first 7.0 miles of this drive is paved) 12.0 miles to the junction of Forest Road 257, at the southern end of Bonham Reservoir, and turn right. Proceed west 3.3 miles to the fork in the road and turn left, continuing on Forest Road 257. Travel 1.3 miles, passing Kitson Reservoir, and turn left on road 257.1E. Proceed 0.1 mile directly to the reservoir.

Size, Depth, and Elevation: 32 acres, 41 feet deep, and 10,200 feet.

Fish: Catchable rainbow trout are stocked several times throughout the summer. Fingerling Snake River cutthroat trout are stocked periodically.

Agency: Bureau of Reclamation.

Comments: An unimproved boat launching area is usable by those skilled in trailer use, water levels permitting. Bank access is easy and fishing pressure is moderate. No developed campsites exist at this reservoir. Please pack out trash.

Special Regulations: None.

86 COTTONWOOD RESERVOIR #1

Access: From Collbran, travel south on Forest Access Road 121 (the first 7.0 miles of this drive is paved) 12.0 miles to the junction of Forest Road #257, at the southern end of Bonham Reservoir, and turn right. Proceed west 3.3 miles to the fork in the road and turn left, continuing on Forest Road 257. Travel 2.1 miles, passing Kitson Reservoir, to Cottonwood Reservoir #1. The road dead ends at the dam where large parking areas and access to the boat ramp are located.

Size, Depth, and Elevation: 77 acres, 44 feet deep, and 10,065 feet.

Fish: Catchable rainbow trout are stocked several times throughout the summer. Fingerling rainbow, splake and cutthroat trout are stocked periodically. Wild brook trout and white sucker are present.

Agency: Bureau of Reclamation.

Comments: Easy bank access, a gravelled boat ramp, and a major campground make this lake a very popular destination. These features and the variety of fish present result in heavy fishing pressure.

Special Regulations: None.

87 LILY LAKE

Access: From Collbran, travel south on Forest Access Road 121 (the first 7.0 miles of this drive is paved) 12.0 miles to the junction of Forest Road 257, at the southern end of Bonham Reservoir, and turn right. Proceed west 3.3 miles to the fork in the road and turn left, continuing on Forest Road 257. Travel 1.3 miles, passing Kitson Reservoir, and turn left. Proceed 0.3 mile directly to Cottonwood Reservoir #4. Hike the trail from the east end of Cottonwood Campground near the small creek 0.6 mile to Lily Lake.

Size, Depth, and Elevation: 4 acres, 27 feet deep, and 10,220 feet.

Fish: Fingerling cutthroat trout are stocked annually.

Agency: U.S. Forest Service.

Comments: Lily Lake is a natural lake. This is a hike-in-only lake. Fishing pressure is light. No developed campsites exist at this reservoir. Please pack out trash.

Special Regulations: None.

88 DECAMP RESERVOIR

Access: From Collbran, travel south on Forest Access Road 121 (the first 7.0 miles of this drive is paved) 12.0 miles to the junction of Forest Road 257, at the southern end of Bonham Reservoir, and turn right. Proceed west 3.3 miles to the fork in the road and turn left, continuing on Forest Road 257. Travel 1.3 miles, passing Kitson Reservoir, and turn right onto the four-wheel-drive road 259 and proceed 0.9 mile. At the fork near the lake walk to the left directly to DeCamp Reservoir.

Size, Depth, and Elevation: 9 acres, 11 feet deep, and 9,760 feet.

Fish: Wild brook trout are present.

Agency: Bureau of Reclamation.

Comments: While DeCamp does not hold large numbers of brook trout, the fish present tend to be larger individuals. Fishing pressure is light. No developed campsites exist at this reservoir. Please pack out trash.

Special Regulations: None.

89 BIG MEADOWS RESERVOIR

Access: From Collbran, travel south on Forest Access Road 121 (the first 7.0 miles of this drive is paved) 12.0 miles to the junction of Forest Road 257, at the southern end of Bonham Reservoir, and turn right. Proceed west 3.3 miles (you will pass above Neversweat Reservoir as you drop down the hill) to the fork in the road and turn right onto Forest Road 258. Continue 1.9 miles, passing Neversweat Reservoir, to Big Meadows Reservoir on the left-hand side of the road.

Size, Depth, and Elevation: 40 acres, 24 feet deep, and 9,800 feet.

Fish: Catchable rainbow trout are stocked annually. Fingerling rainbow trout are stocked biannually. Wild brook trout and fathead minnow are present.

Agency: Bureau of Reclamation.

Comments: Aquatic vegetation can interfere with boating and fishing in late summer.

Special Regulations: Only electric motors are allowed.

90 COTTONWOOD RESERVOIR #5

Access: From Collbran, travel south on Forest Access Road 121 (the first 7.0 miles of this drive is paved) 12.0 miles to the junction of Forest Road 257, at the southern end of Bonham Reservoir, and turn right. Proceed west 3.3 miles (you will pass above Neversweat Reservoir as you drop down the hill) to the fork in the road and turn right onto Forest Road 258. Continue 1.1 miles and turn left on Forest Road 258.1B. Proceed 0.9 mile directly to Cottonwood Reservoir #5.

Size, Depth, and Elevation: 28 acres, 30 feet deep, and 9,966 feet.

Fish: Fingerling cutthroat trout are stocked annually. Fingerling brown trout are stocked periodically. Wild brook trout are present.

Agency: Bureau of Reclamation.

Comments: The cutthroats in this reservoir tend to be large but hard to catch. An unimproved boat launching area is usable by those skilled in trailer use, water levels permitting. Bank access is easy and fishing pressure is moderate. No developed campsites exist at this reservoir, but numerous informal camping spots are available. Please pack out trash.

Special Regulations: Only electric motors are allowed.

O COTTONWOOD CREEK

Access: From Collbran, travel south on Forest Access Road 121 (the first 7.0 miles of this drive is paved) 12.0 miles to the junction of Forest Road 257, at the southern end of Bonham Reservoir, and turn right. Proceed west 3.3 miles to the fork in the road and turn left, continuing on Forest Road 257. Travel 2.1 miles, passing Kitson Reservoir, to Cottonwood Reservoir #1. The road dead ends at the dam; park in parking area on the right-hand side of the road. Cottonwood Creek flows from the dam on Cottonwood Lake #1 and is accessible by hiking downstream.

Land Status: Cottonwood Creek is 12.5 miles long from the dam of Cottonwood Lake #1 to Plateau Creek. The upper 4.5

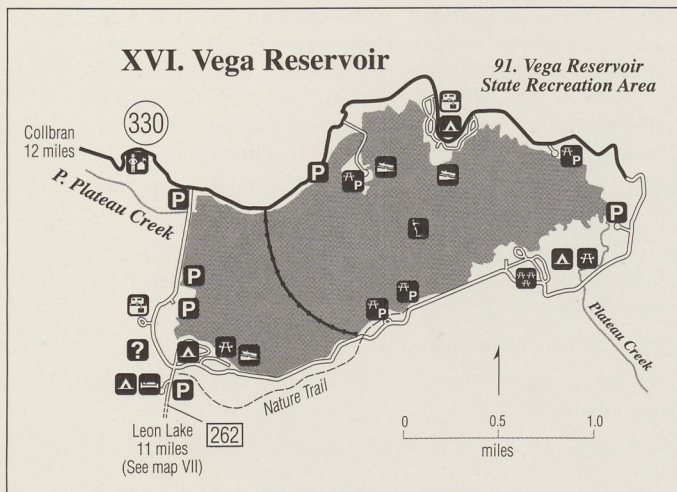
miles lie within the National Forest. The lower 8.0 miles lie on private land. Obtain permission before accessing the stream on private land!

Stream Width and Elevation on Public Lands: 6 feet wide and 7,440 to 10,020 feet.

Fish: Wild brook trout are present.

Comments: Cottonwood Creek is a steep, swift-flowing stream. Some good pools are present, but streamside access is limited in some reaches due to dense vegetation.

Special Regulations: None.



XVI. Vega Reservoir

Vega Reservoir is the largest body of water included in this guide and lies just outside of the Grand Mesa National Forest. Its proximity and importance to the area's recreational picture makes it an outstanding Grand Mesa fishing destination.

The entire reservoir lies within the Vega State Recreation Area, which is managed by the Colorado Division of Parks and Outdoor Recreation. All vehicles entering the park are required to display a current, daily or annual Colorado Parks Pass. There are a full array of amenities available for anglers, campers and boaters including developed campgrounds with over 100 camp sites, picnic areas, a nice boat ramp, hiking trails and dump station. But alas, no classic jazz radio signal, unless you have satellite. Over 100 campsites, many picnic areas, and concrete boat ramps are just some of the conveniences available to fishermen.

The Vega Reservoir trout fishery is among the best that Colorado has to offer. The Spanish word "vega" means meadow, and when this mountain meadow was dammed, it created an incredibly productive 900-acre trout producer. Fingerling trout grow rapidly and anglers frequently catch 14 inches trout weighing over a pound each. Reports of larger rainbow trout are common, with some reaching 3 to 7 pounds. Vega supports this tremendous trout population in the face of very heavy fishing pressure by both shore and boat anglers. These fish are also available to ice fishermen because the roads to Vega Reservoir are kept open by snowplows in winter.

Vega Reservoir was built by the U.S. Bureau of Reclamation to store water for irrigation. From late summer through winter, the reservoir's water level can be very low. While this requires additional caution by boaters and extra walking for ice fishermen, do not be misled into thinking that this drawdown ruins the fishing. These annual water level fluctuations actually help recycle the nutrients that support Vega's productive food chain. A conservation pool reserves adequate water to preserve the valuable trout population.

91 VEGA RESERVOIR

Access: From Collbran, travel east on County Road 330 (paved) 14 miles to Vega Reservoir. Vega Reservoir lies entirely within the Vega State Park.

All vehicles entering the park are required to display a current Colorado Parks Pass.

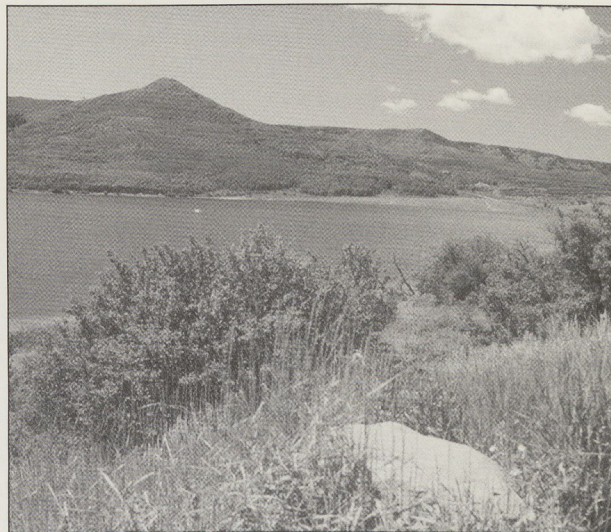
Size, Depth, and Elevation: 900 acres, 94 feet deep, and 7,960 feet.

Fish: Rainbow and cutthroat, with brook and brown trout caught occasionally. Fingerling rainbow and Snake River cutthroat trout are stocked annually. Wild brook and brown trout, as well as mottled sculpin enter the reservoir from Plateau and Leon creeks.

Agency: Collbran Conservancy District.

Comments: Summertime fishing pressure is heavy due to the easy access and local popularity of this reservoir. Bank access is easy along most of the shoreline, depending on the water level. The concrete boat ramp provides convenient access for larger trailered boats. Four developed campgrounds, several picnic areas, and a small store providing food, fishing tackle, and fuel, add to the summertime convenience of this area. Ice fishing at Vega Reservoir is very popular. County Road 330 is plowed throughout the winter making the reservoir accessible by car. The low wintertime water level requires that anglers hike, ski, or snowmobile to the ice. Contact Vega State Park to confirm ice conditions.

Special Regulations: None.



Vega Reservoir

P PLATEAU CREEK

Access: From Collbran, travel east on County Road 330 (paved) 14 miles to Vega Reservoir. Plateau Creek flows into and out of Vega Reservoir. The portions of Plateau Creek open to the public lie within the boundary of the Vega State Recreation Area. All vehicles entering the park are required to display a current Colorado Parks Pass. The stream below Vega is accessed by hiking down below the dam. This access is very steep and rocky. Access to the stream above Vega is easy.

Land Status: Plateau Creek is 26.0 miles long from the dam of Vega Reservoir to the Colorado River. Below Vega, only 0.3 mile of Plateau Creek lies within the Vega State Recreation Area, and is open to public fishing. Below the Recreation Area boundary, the stream lies on private lands. Obtain per-

mission before accessing the stream on private land!

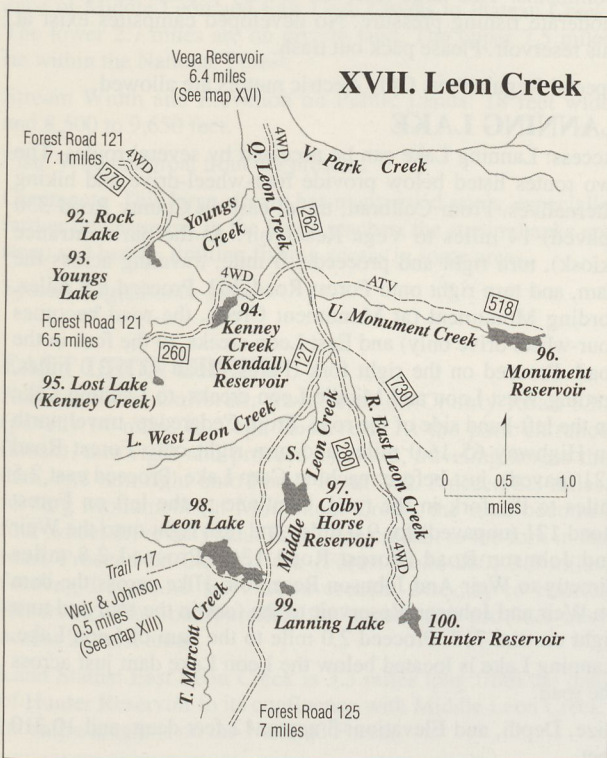
At the upper end of Vega Reservoir, 0.2 mile of Plateau Creek, between the reservoir's high water mark and the road, are open to public access. The headwater reaches of Plateau Creek lie within the National Forest. While this portion of the stream holds cutthroat and brook trout (from wild spawn), the stream is very small and remote.

Stream Width and Elevation on Public Lands: 10 feet wide and 7,600 to 8,000 feet.

Fish: Rainbow, brook, and brown trout, which enter the stream from Vega Reservoir.

Comments: Plateau Creek below Vega Reservoir receives heavy fishing pressure. Some good pools are present, but streamside access is limited in some reaches due to dense vegetation. Above the reservoir, the stream has few good pools and may have very low flow.

Special Regulations: None.



XVII. Leon Creek

Leon Creek is one of the Grand Mesa's larger streams. Anglers can access the drainage from three different directions. Two-wheel-drive vehicles with adequate clearance will get you into much of this basin when the roads are dry. When it rains, four-wheel drive is strongly recommended since thunderstorms can make for hazardous travel. Be prepared!

Leon Creek itself is best accessed from Vega Reservoir along Forest Road 262. Be sure to check land status along this lower stretch of the stream as much of it is private. Portions of Leon Creek must be accessed by hiking over the ridge west of Forest Road 518. Streamside access can be challenging due to steep banks and dense brush. Some of the upper stretches of Leon Creek are comparatively flat and more easily accessed, however, these stretches tend to hold fewer fish.

The Leon Creek drainage can also be reached from the Bonham Lake Road (Forest Road 121). Traveling west on Forest Road 260 provides access to Kenney Creek Reservoir, and Youngs, Rock, and Lost lakes. Do not be misled by the

well-gravelled condition at the beginning of this road, as it eventually turns into a four-wheel-drive road. Sort of "on the other side of the mountain," Marcott Creek is included here as it provides access to the Leon Creek drainage and it receives some of its water from there as well. The Marcott Creek Road, Forest Road 127, provides access to Leon Creek from the south. Marcott Creek receives water via a tunnel from Leon Lake, the area's largest reservoir. Marcott Creek offers excellent fishing for cutthroats. Again, four-wheel drive is recommended.

92 ROCK LAKE

Access: From Collbran, travel south on Forest Access Road 121 (the first 7.0 miles of this drive is paved) 10.0 miles and turn left onto Forest Road 279. Proceed 1.2 miles staying left on Forest Road 279 (this road soon requires four-wheel drive). Proceed 4.5 miles to Rock Lake on the right-hand side of the road.

Size, Depth, and Elevation: 4 acres, 12 feet deep, and 10,200 feet.

Fish: Fingerling cutthroat trout are stocked periodically.

Agency: U.S. Forest Service.

Comments: Fishing pressure is light. No developed campsites exist at this reservoir. Please pack out trash.

Special Regulations: None.

93 YOUNGS LAKE

Access: From Collbran, travel south on Forest Access Road 121 (the first 7.0 miles of this drive is paved) 10.0 miles and turn left onto Forest Road 279. Proceed 1.2 miles and stay left onto Forest Road 279 (this road soon requires four-wheel drive). Proceed 5.0 miles, passing Rock Lake, to Youngs Lake.

Size, Depth, and Elevation: 10 acres, 6 feet deep, and 10,180 feet.

Fish: Wild brook trout measuring 11-13 inches are present.

Agency: U.S. Forest Service.

Comments: Youngs Lake is a natural lake. Fishing pressure is light. No developed campsites exist at this reservoir. Please pack out trash.

Special Regulations: Only electric motors are allowed.

94 KENNEY CREEK RESERVOIR (KENDALL RESERVOIR)

Access: From Collbran, travel east on County Road 330 (paved) 14 miles to Vega Reservoir. At the park entrance (kiosk), turn right and proceed 1.0 mile, traveling across the dam, and turn right onto Forest Road 262. Proceed 7.9 miles and turn right onto the four-wheel-drive road 260. Ford Leon Creek and continue 1.0 mile to Kenney Creek Reservoir on the left-hand side of the road.

Size, Depth, and Elevation: 16 acres, 11 feet deep, and 9,880 feet.

Fish: Fingerling cutthroat trout are stocked bi-annually. Wild brook trout are present.

Agency: Private permittee.

Comments: Fishing pressure is light. No developed campsites exist at this reservoir. Please pack out trash.

Special Regulations: Only electric motors are allowed.

95 LOST LAKE (KENNEY CREEK)

Access: From Collbran, travel east on County Road 330 (paved) 14 miles to Vega Reservoir. At the park entrance (kiosk), turn right and proceed 1.0 mile, traveling across the dam, and turn right onto Forest Road 262. Proceed 7.9 miles and turn right onto the four-wheel-drive road. Ford Leon Creek, and continue 2.1 miles, passing Kenney Creek Reservoir, to where the road crosses Kenney Creek. From here, hike up Kenney Creek 0.3 mile directly to Lost Lake.

Size, Depth, and Elevation: 3 acres, 7 feet deep, and 10,300 feet.

Fish: Fingerling cutthroat trout are stocked bi-annually. Wild brook trout are present.

Agency: U.S. Forest Service.

Comments: Lost Lake is natural lake which receives light fishing pressure due to its remoteness. No developed campsites exist at this reservoir. Please pack out trash.

Special Regulations: None.

96 MONUMENT RESERVOIR #1

Access: From Collbran, travel east on County Road 330 (paved) 14 miles to Vega Reservoir. At the park entrance (kiosk), turn right and proceed 1.0 mile, traveling across the dam, and turn right onto Forest Road 262. Proceed 7.9 miles and to Monument Trail 518 which is ATV or hike-in. Proceed 3.0 miles to Monument Reservoir #1

Size, Depth, and Elevation: 34 acres, 33 feet deep, and 10,400 feet.

Fish: Fingerling cutthroat trout are stocked periodically.

Agency: Private permittee.

Comments: Four-wheel drive is not necessary to access this reservoir, but wet roads may limit access. Fishing pressure is light. No developed campsites exist at this reservoir. Please pack out trash.

Special Regulations: None.

97 COLBY HORSE PARK RESERVOIR

Access: From Collbran, travel east on County Road 330 (paved) 14 miles to Vega Reservoir. At the park entrance (kiosk), turn right and proceed 1.0 mile, traveling across the dam, and turn right onto Forest Road 262. Proceed 8.8 miles, fording Monument (at Monument Creek, the road becomes four-wheel drive only and is very rough) and East Leon creeks, to the fork in the road. Proceed on the right fork (Forest Road 127) 2.6 miles, fording West Leon and Middle Leon creeks, and take a sharp left after crossing Middle Leon Creek. Continue 0.4 mile, fording Middle Leon Creek again, directly to Colby Horse Park Reservoir.

Size, Depth, and Elevation: 56 acres, 14 feet deep, and 10,000 feet.

Fish: Fingerling cutthroat trout are stocked periodically.

Agency: Leon Lake Ditch and Reservoir Company.

Comments: Fishing pressure is moderate. No developed campsites exist at this reservoir. Please pack out trash.

Special Regulations: Only non-motorized watercraft are allowed.

98 LEON LAKE

Access: Leon Lake can be accessed by several routes. The two routes listed below provide four-wheel drive and hiking alternatives. From Collbran, travel east on County Road 330 (paved) 14 miles to Vega Reservoir. At the park entrance

(kiosk), turn right and proceed 1.0 mile, traveling across the dam, and turn right onto Forest Road 262. Proceed 8.8 miles, fording Monument (at Monument Creek, the road becomes four-wheel drive only) and East Leon creeks, to the fork in the road. Proceed on the right fork (Forest Road 127) 3.0 miles, fording West Leon and Middle Leon creeks, to Leon Lake, on the right-hand side of the road. From Cedaredge, travel north on Highway 65 16.0 miles and turn right onto Forest Road 121 (paved) just before reaching Carp Lake. Proceed east 2.5 miles to the fork in the road. Continue to the left on Forest Road #121 (unpaved) for 9.0 miles and turn right onto the Weir and Johnson Road (Forest Road 126). Proceed 2.8 miles directly to Weir And Johnson Reservoir. Hike across the dam on Weir and Johnson Reservoir to the fork in the trail and turn right. Proceed 1.0 mile to Leon Lake on the left-hand side of the trail.

Size, Depth, and Elevation: 94 acres, 76 feet deep, 10,360 feet.

Fish: Wild brook trout are present.

Agency: Leon Lake Ditch and Reservoir Company.

Comments: This large reservoir is very popular and receives moderate fishing pressure. No developed campsites exist at this reservoir. Please pack out trash.

Special Regulations: Only electric motors are allowed.

99 LANNING LAKE

Access: Lanning Lake can be accessed by several routes. The two routes listed below provide four-wheel-drive and hiking alternatives. From Collbran, travel east on County Road 330 (paved) 14 miles to Vega Reservoir. At the park entrance (kiosk), turn right and proceed 1.0 mile, traveling across the dam, and turn right onto Forest Road 262. Proceed 8.8 miles, fording Monument (at Monument Creek, the road becomes four-wheel drive only) and East Leon creeks, to the fork in the road. Proceed on the right fork (Forest Road 127) 3.0 miles, fording West Leon and Middle Leon creeks, to Lanning Lake on the left-hand side of the road. From Cedaredge, travel north on Highway 65 16.0 miles and turn right onto Forest Road 121 (paved), just before reaching Carp Lake. Proceed east 2.5 miles to the fork in the road. Continue to the left on Forest Road 121 (unpaved) for 9.0 miles and turn right onto the Weir and Johnson Road (Forest Road 126). Proceed 2.8 miles directly to Weir And Johnson Reservoir. Hike across the dam on Weir and Johnson Reservoir to the fork in the trail and turn right on trail 717. Proceed 2.0 mile to the dam of Leon Lake. Lanning Lake is located below the Leon Lake dam just across the road.

Size, Depth, and Elevation: 3 acres, 12 feet deep, and 10,310 feet.

Fish: Wild brook trout are present.

Agency: U.S. Forest Service.

Comments: Fishing pressure is light. No developed campsites exist at this reservoir. Please pack out trash.

Special Regulations: None.

100 HUNTER RESERVOIR

Access: From Collbran, travel east on County Road 330 (paved) 14 miles to Vega Reservoir. At the park entrance (kiosk), turn right and proceed 1.0 mile, traveling across the dam, and turn right onto Forest Road 262. Proceed 8.8 miles, fording Monument (at Monument Creek, the road becomes four-wheel drive only) and East Leon creeks, to the fork in the road. Proceed on the left fork (Forest Road 280) 3.5 miles, fording Leon and East Leon creeks, directly to Hunter Reservoir.

Size, Depth, and Elevation: 17 acres, 8 feet deep, and 10,360 feet.

Fish: Fingerling cutthroat trout are stocked periodically.

Agency: U.S. Forest Service.

Comments: The access to this lake may be difficult, but the scenery is outstanding. Fishing pressure is light. No developed campsites exist at this reservoir. Please pack out trash.

Special Regulations: None.

Q LEON CREEK

Access: From Collbran, travel east on County Road 330 (paved) 14 miles to Vega Reservoir. At the park entrance (kiosk), turn right and proceed 1.0 mile, traveling across the dam, and turn right onto Forest Road 262. Proceed 1.5 miles to the Grand Mesa National Forest Boundary. From this boundary, upstream for 5.0 miles, the stream must be accessed by hiking up to 0.7 mile over the ridge to the west. About 5 miles south of the National Forest Boundary, Forest Road 262 swings close to Leon Creek and parallels the stream for about 0.7 mile. Streamside access in this area is comparatively easy.

Land Status: Leon Creek is 10.2 miles long from the confluence of Middle Leon and East Leon Creeks to Plateau Creek. The lower 2.7 miles are on private land. The upper 7.5 miles lie within the National Forest.

Stream Width and Elevation on Public Lands: 18 feet wide and 8,500 to 9,650 feet.

Fish: Wild cutthroat trout are present.

Comments: This large stream has many good pools, especially farther downstream. In the lower reaches, the stream banks are steep and brushy limiting fishing access in some areas.

Special Regulations: None.

R EAST LEON CREEK

Access: From Collbran, travel east on County Road 330 (paved) 14 miles to Vega Reservoir. At the park entrance (kiosk), turn right and proceed 1.0 mile, traveling across the dam, and turn right onto Forest Road 262. Proceed 8.8 miles, fording Monument (at Monument Creek, the road becomes four-wheel drive only) and East Leon creeks, to the fork in the road. Proceed on the left fork (Forest Road 280) 3.5 miles, fording Leon and East Leon creeks, directly to Hunter Reservoir. The road parallels the stream and provides easy access in most areas.

Land Status: East Leon Creek is 3.3 miles long from the dam of Hunter Reservoir to its confluence with Middle Leon Creek. Its entire length is on the National Forest.

Stream Width and Elevation on Public Lands: 5 feet wide and 9,650 to 10,358 feet.

Fish: Wild cutthroat trout are present.

Comments: The stream flows over a bed of large rocks, but good pools are present. Dense streamside vegetation makes fishing difficult in spots.

Special Regulations: None.

S MIDDLE LEON CREEK

Access: From Collbran, travel east on County Road 330 (paved) 14 miles to Vega Reservoir. At the park entrance (kiosk), turn right and proceed 1.0 mile, traveling across the dam, and turn right onto Forest Road #262. Proceed 8.8 miles, fording Monument (at Monument Creek, the road becomes four-wheel drive only) and East Leon creeks, to the fork in the road. Proceed on the right fork (Forest Road #127) 2.6 miles, fording West Leon and Middle Leon creeks, and take a sharp left after crossing Middle Leon Creek. Continue 0.4 mile, fording Middle Leon Creek again, towards Colby Horse Park

Reservoir. Proceeding at the right fork (Forest Road 27) 3.0 miles takes you to Leon Lake. Middle Leon Creek is accessible at the road crossings and below Leon and Colby Horse Park reservoirs.

Land Status: Middle Leon Creek is 3.0 miles long from the dam of Leon Lake to its confluence with East Leon Creek. Its entire length is on the National Forest.

Stream Width and Elevation on Public Lands: 8 feet wide and 9,650 to 10,360 feet.

Fish: Wild cutthroat trout are present.

Comments: This is a swift-flowing stream, but some good pools are present. Dense streamside vegetation in spots makes fishing difficult.

Special Regulations: None.

T MARCOTT CREEK

Access: From Cedaredge, travel north on Highway 65 3.5 miles and turn right on the Surface Creek Road. Proceed 6.0 miles to the Grand Mesa National Forest boundary and turn right on Forest Road #127 (four-wheel drive). Proceed 1.5 miles to where the road crosses Middle Leon Creek. After crossing Middle Leon Creek, the road parallels Marcott Creek for 4.5 miles.

Land Status: Marcott Creek is 4.9 miles from Leon Lake to Surface Creek. Its entire length is on the National Forest.

Stream Width and Elevation on Public Lands: 5 feet wide and 8,800 to 10,420 feet.

Fish: Wild cutthroat trout are present.

Comments: Marcott Creek is a midsize stream having some good pools. The road into this area is very rough, but the stream is easy to fish.

Special Regulations: None.

U MONUMENT CREEK

Access: From Collbran, travel east on County Road 330 (paved) 14 miles to Vega Reservoir. At the park entrance (kiosk), turn right and proceed 1.0 mile, traveling across the dam, and turn right onto Forest Road 262. Proceed 7.9 miles and turn left on trail 518. Monument Creek parallels the ATV only road. Monument Reservoir #1 is 3.0 miles upstream.

Land Status: Monument Creek is 2.3 miles long from the dam of Monument Reservoir to Leon Creek. Its entire length is on the National Forest.

Stream Width and Elevation on Public Lands: 8 feet wide and 9,500 to 10,200 feet.

Fish: Wild cutthroat trout are present.

Comments: Streamside access is easy. This small stream has good pools and good undercut banks.

Special Regulations: None.

V PARK CREEK

Access: From Collbran, travel east on County Road 330 (paved) 14 miles to Vega Reservoir. At the park entrance (kiosk), turn right and proceed 1.0 mile, traveling across the dam, and turn right onto Forest Road #262. Proceed 1.5 miles to the Grand Mesa National Forest Boundary. Park Creek parallels the road on the east side, usually within 200 yards for most of its length.

Land Status: Park Creek is 10 miles long from its headwaters to Plateau Creek. The lower 2.3 miles of the stream lie on private land. After entering the National Forest, another 1.5 miles of the stream lie within private property. The stream is open to

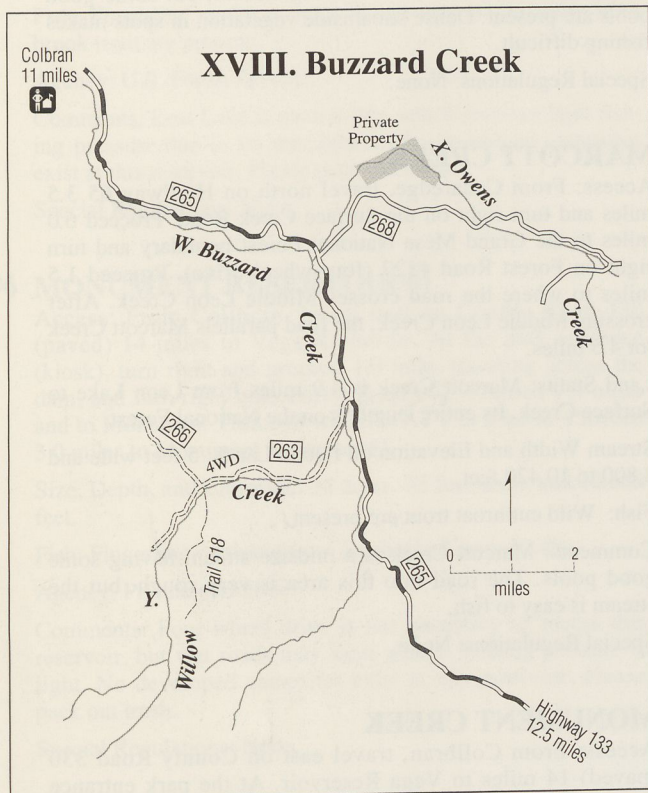
public access above and below this private in holding. Be sure to refer to a Grand Mesa National Forest map before fishing this stream. Respect private property.

Stream Width and Elevation on Public Lands: 4 feet wide and 8,260 to 10,560 feet.

Fish: Wild cutthroat trout are present.

Comments: Park Creek is a small shallow stream with small pools that hold most of the fish. Dense streamside vegetation makes fishing difficult in some spots.

Special Regulations: None.



XVIII. Buzzard Creek

The Buzzard Creek drainage is a beautiful area with open rolling hills and contrasting forested benches. Some people refer to it as "the back side of the Grand Mesa." The drainage has no lakes, no developed campgrounds, and no services or facilities. If you want to "get away from it all and rough it" on your fishing trip, this area is for you.

The main access is along Forest Road 265 which parallels Buzzard Creek in the Grand Mesa Nation Forest for several miles. The road is generally good when dry, yet can turn treacherous following a thunderstorm. Four-wheel drive or ATV are recommended, if not required, when traveling off of Forest Road 265.

Fishing pressure is light since this area lacks lakes or reservoirs and the amenities that accompany them. The streams are small and may carry little water. In fact, it is sometimes surprising to find trout in some of the stream reaches at all. Your best bet is Buzzard Creek below the Willow confluence where you may find cutthroat, brook and rainbow trout and perhaps a mottled sculpin if you bait fish.

Several hiking trails also exist in this often overlooked area. The lower reaches of Buzzard Creek lie on private land. Be sure to obtain permission before entering these areas.

W BUZZARD CREEK

Access: From Collbran, travel east on County Road 330 (paved) 6.0 miles to the Silt Cutoff/Vega fork. Proceed left on the Silt Cutoff Road 8.0 miles to the Hightower Road (Forest Road 265) and turn right. Proceed 2.0 miles to the Grand Mesa National Forest boundary. Forest Road 265 parallels Buzzard Creek for most of its length on the National Forest up to its headwaters. However, accessing the stream requires a short hike in many areas, and streamside access can be difficult due to steep banks and dense vegetation.

Land Status: Buzzard Creek is 30.5 miles long from Bird Creek to Plateau Creek. The lower 20 miles lie on private land. Obtain permission before fishing in this area. The upper 10.5 miles lies entirely on the National Forest.

Stream Width and Elevation on Public Lands: 10 feet wide and 7,480 to 8,648 feet.

Fish: Cutthroat and brook trout, white sucker and mottled sculpin.

Comments: While this stream appears intermittent and stagnant during periods of low flow, surprisingly, it supports a fairly good trout population. The stream contains large rocks but few good pools. Much of the stream bottom is covered with algae during the summer. Livestock is common along this stream.

Special Regulations: None.

X OWENS CREEK

Access: From Collbran, travel east on County Road 330 (paved) 6.0 miles to the Silt Cutoff/Vega fork. Proceed left on the Silt Cutoff Road 8.0 miles to the Hightower Road (Forest Road 265) and turn right. Proceed 8.2 miles and turn left on the Owens Creek Road (Forest Road 268). The lower 2.0 miles of stream is accessible along the road before it enters private property. Owens creek is again accessible upstream where it is crossed by the road, which parallels the stream for about 2.5 miles.

Land Status: Owens Creek runs through private land for about 1.5 miles. The remainder of the stream is on National Forest. Be sure to refer to the Grand Mesa National Forest map before fishing Owens Creek.

Stream Width and Elevation on Public Lands: 3 feet wide and 8,200 to 10,240 feet.

Fish: Rainbow, cutthroat, and brook trout may be present

Comments: Owens Creek is a small stream that often appears dry at its confluence with Buzzard Creek due to water diversions about 2 miles upstream. Above the private property, the stream is shallow and has few good pools. However, the numerous small beaver ponds hold fish.

Special Regulations: None.

Y WILLOW CREEK

Access: From Collbran, travel east on County Road 330 (paved) 6.0 miles to the Silt Cutoff/Vega fork. Proceed left on the Silt Cutoff Road 8.0 miles to the Hightower Road (Forest Road 65) and turn right. Proceed 11.0 miles and turn right onto the four-wheel-drive High Trail Road (Forest Road 263). Proceed 0.5 miles to reach the Willow Creek/Buzzard Creek confluence. The road continues to parallel Willow Creek for 4.0 miles up to Wagon Park. The stream is accessible by a short hike off the road for most of its length.

Land Status: Willow Creek is 10.0 miles long from its headwaters to Buzzard Creek. Its entire length is on the National Forest.

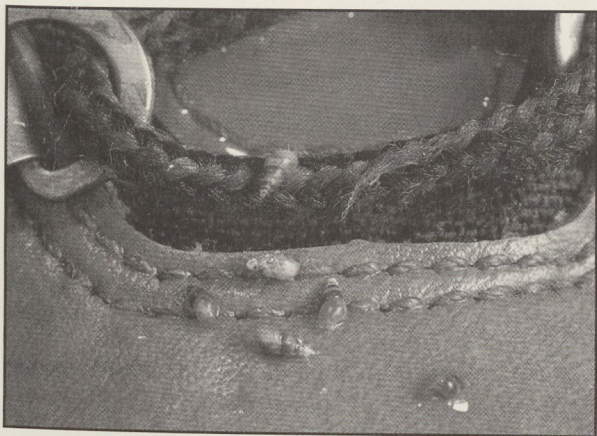
Stream Width and Elevation on Public Lands: 4 feet wide and

8,550 to 10,640 feet.

Fish: Wild cutthroat trout are present

Comments: In spite of its small size, Willow Creek supports a good trout population. Many small pools and beaver ponds are present. Streamside vegetation provides good cover, but may limit fishing in some reaches.

Special Regulations: None.



New Zealand mud snails

Stop Aquatic Hitchhikers

Anglers can help prevent the spread of fish diseases and aquatic nuisance species in Colorado. Several lakes and reservoirs on the Grand Mesa have been exposed to a trout parasite known as whirling disease. Whirling disease is a microscopic spore that does not harm humans, but it infects trout. Trout can be carriers of whirling disease and the spores can persist for many years. It can destroy rainbow, brook and cutthroat trout fisheries, especially in streams and rivers. New Zealand mud snails are an exotic species recently found along the Front Range in Colorado. They can live in mud, on aquatic weeds and in lake water. These snails form dense colonies that harm trout and their habitat by smothering the stream bottom. The zebra mussel is another harmful exotic species that has spread across much of the eastern United States. They have not been found in Colorado but can be transported on boats and boating equipment. Anglers and boaters can keep these threats to sport fishing from spreading by following some basic guidelines.

When you clean your fish: Dispose of fish entrails or byproducts in the trash as solid waste. Do not clean fish in lakes or streams or dispose of the entrails in the sink.

When you leave a body of water: Drain water out of boats and live wells. Clean aquatic weeds and debris off your boat and trailer before leaving a water. Thoroughly wash mud from vehicles, boats, trailers, waders, boots, and fishing equipment.

New Zealand mud snails can be killed by letting equipment dry several days between uses, or spraying the snails with 409 or similar soap and drying in the hot sun for several hours.

Illegal Transfer of Fish

It is illegal for anyone other than the Colorado Division of Wildlife or someone with a special license or permit to stock or release fish species into the waters of the state. Illicit stocking is a growing problem and can have far-reaching effects. In western Colorado, illegal fish stocking poses serious threats to sport fisheries in lakes and reservoirs and native fishes in rivers. Illegally stocked fish prey on and compete with other fishes. They can harm recovery of native fish and have detrimental effects on sport fisheries such as Colorado River cutthroat trout on the Grand Mesa. It is illegal to move fish from one water to another. Please don't do it and if you see a violation, please report it.



Operation Game Thief

Operation Game Thief is a non-profit organization working with the Colorado Division of Wildlife's law enforcement program. It pays rewards to citizens who report poachers or resource violations.

How Operation Game Thief works:

Your call or e-mail or letter starts the process. Information about the incident is taken and you are assigned a code number. **YOU DO NOT HAVE TO REVEAL YOUR NAME, TESTIFY IN COURT OR SIGN A DEPOSITION.** The information is evaluated by law enforcement personnel. The investigation begins immediately. If the poacher is arrested or issued a citation on the basis of your information, a cash reward is authorized. The pay out is arranged to protect your identity. Rewards are paid only if you request a reward prior to any investigation.

How to contact Operation Game Thief:

Call: 1-877-COLO-OGT

E-mail: game.thief@state.co.us

Write: Operation Game Thief

Colorado Division of Wildlife

6060 Broadway

Denver, CO 80216

Water Management

The Colorado Division of Wildlife is responsible for fishery management on the Grand Mesa which includes most of the trout stocking. Some people might assume also that the agency must control water levels in the reservoirs and lakes because trout need water to survive. However, water levels are generally controlled by those who build and operate the reservoirs instead of the Division of Wildlife.

All of the reservoirs within the boundaries of the Grand Mesa National Forest are operated under special-use permits issued by the U.S. Forest Service. These permits allow construction of dams and water storage. Water management in most reservoirs and streams is controlled by the permittee. Permittees on the Grand Mesa range from individual ranchers who irrigate pastures and crops to the U.S. Bureau of Reclamation, which releases stored water to generate electricity.

Most Grand Mesa reservoirs are filled in spring and early summer with water from melting snow. This water is stored for a time and then released for irrigation and other purposes during the summer months. As this occurs, reservoir water levels drop and can be very low as fall approaches, especially in drought years. While such drawdowns may make fishing or boating more difficult, they do not necessarily harm the trout community.

Some Grand Mesa reservoirs have conservation pools negotiated in part by the Colorado Division of Wildlife. Conservation pools are minimum water levels that are agreed upon by the regulatory agencies and the permittees. These minimum water levels can prevent the total draining of a reservoir and help preserve trout fishing.

Keep in mind that dams need maintenance or repairs periodically. You may find your favorite reservoir at a much lower water level than normal when repairs are underway. Once the repairs are finished and the reservoirs refilled, the Colorado Division of Wildlife will stock trout and to restore trout fishing opportunities.

Some of the Grand Mesa reservoirs serve as municipal water supplies, such as Carson Lake. These waters may have restrictions on wading or boating to help prevent water contamination. Please help protect drinking water supplies.

Travel Management Plan

The Grand Mesa National Forest staff and many other entities have worked together to develop new travel regulations to protect natural resources, enable safe travel and reduce conflicts between users. These regulations may change the ways you travel to some fishing waters and may be most noticeable to returning visitors. For example, the four wheel drive trails leading to Kiser and Pedro reservoirs are no longer open to vehicles. You might also expect recent changes in the types of vehicles allowed to use roads and trails, especially the more remote areas. Check with a U.S. Forest Service office for more information. You may wish to ask for a copy of their latest travel management plan map showing current access information.

Boating

Boaters are most welcome on the Grand Mesa! Boats provide Grand Mesa anglers a special opportunity to enjoy some of the greatest trout fishing and scenery to be found in Colorado. Vega Reservoir, which combines paved access and boat ramps, is a good destination spot for larger power boats. With the exception of Vega, Island, Eggleston, Park, and Baron reservoirs, most of the Grand Mesa's lakes are less than 100 acres in size and just too small for motorboats. Be sure to do your homework about which waters are best for the type of boating you enjoy.

The Grand Mesa offers many opportunities for boaters with smaller watercrafts that do not require a trailer or a ramp. These boats can be launched at just about any lake on the Grand Mesa that you can drive to. The following reservoirs have undeveloped, unsurfaced boat launch areas. It is possible for individuals skillful in trailer use to access and launch trailered boats at these launching areas if water levels permit. These areas also provide convenient access points for loading and unloading watercraft and gear. However, if you are trailering a boat to one of these waters, consider the weather and road conditions, and the suitability of your vehicle, trailer, and boat for getting in and getting out of these access points. **Here is the list of waters with primitive boat ramps:** Atkinson Reservoir, Baron Lake, Cottonwood Reservoir #4, Cottonwood Reservoir #5, Hotel Twin Lake, Kitson Reservoir, Neversweat Reservoir, Sackett Reservoir, Ward Lake, Waterdog Reservoir and Wier and Johnson Reservoir.

The following reservoirs have either well gravelled or paved boat ramps. They provide good access for trailered boats, water levels permitting: Alexander Lake, Big Creek Reservoir #1, Cottonwood Reservoir #1, Eggleston Lake, Island Lake, (Trickle) Park Reservoir, Vega Reservoir, Vela Reservoir and Youngs Creek Reservoir #3.

The Grand Mesa National Forest has placed restrictions on boats and the type of boat motor you can use on some waters. The following summary will help you plan your fishing trip if you plan to bring a boat along.

No Boats: Operating any kind of boat or raft is prohibited on Carson Lake in Mesa County.

Non-motorized Boats Only: While boats are permitted on the following lakes, any kind of motorized watercraft is prohibited: Beaver Lake, Bonita Reservoir, Butts Lake, Glacier Springs Retention Pond, Granby Reservoir #7, Griffith Lake #1, Jumbo Reservoir, Little Grouse Reservoir, Mesa Lake and South Mesa Lake, Sackett Reservoir, Sunset Lake and Trout Lake.

Only Electric Motors are allowed on the following waters: Big Meadows Reservoir, Cottonwood Reservoir #5, Dogfish Reservoir, Forty Acre Lake, Goodenough Reservoir, Kenny Creek Reservoir, Kiser Reservoir, Leon Lake, Military Park Reservoir, Rimrock Lake, Sheep Slough Reservoir, Silver Lake and Youngs Lake.

Fishes of the Grand Mesa



Colorado River cutthroat trout (*Oncorhynchus clarki pleuriticus*)

Colorado River cutthroat trout are the only trout native to western Colorado. The name "cutthroat" was derived from the bright red slash marks found under the gills. Colorado River cutthroats have large dark spots on a light background. They have few, if any, spots on the head or nape which makes them different from rainbow trout. Colorado River cutthroats have large, rounded spots concentrated toward the tail and only a few spots under the lateral line.

In a conservation effort to preserve native wildlife, the Division of Wildlife, Trout Unlimited and other entities have worked together to manage Colorado River cutthroat trout on the Grand Mesa. Choice lakes and reservoirs include: Big Creek Res. #1, Blue Lk., Bonham Res. the Bull Creek Res., Butts, Cottonwood Res. #5, Forrest Lk., the Granbys, Griffith Lk. #1, Kenny Creek Res., Lily Lk., Little Eggleston, Silver Lk. and Youngs Creek Res. #1&2 and Youngs Creek Res. #3. Streams which hold Colorado River cutthroats include Big, Bull, Buzzard, East Leroux, East and Middle Leon, and Monument creeks.

Rainbow trout (*Oncorhynchus mykiss*)



Rainbow trout have small dark spots on a light background, like cutthroats. The spots are small, irregularly shaped, and evenly spread over the top of the head, back and tail fin. Rainbows have silver sides that often have a bright horizontal pink streak, hence the name. This popular non-native trout has been managed on the Grand Mesa for many years.

Fishing lakes and reservoirs for rainbow trout include: Alexander, Atkinson, Bailey, Baron, Beaver, Big Eggleston, Carp, Cottonwood #1&4, Goodenough, Glacier Springs, Hotel Twin, Island, Jumbo, Kiser Slough, Mesa, Sunset, Vela, Waterdog, Ward and Ward Creek. Rainbow trout are also found in Cottonwood, Kannah and Mesa creeks.

Brown trout (*Salmo trutta*)



Brown trout also have dark spots on a light background. The spots are large and concentrated on the back of the fish. The spots on the sides of brown trout are usually red or orange with a white or cream colored halo. The tail fin is without spots

or with only a few on the upper part. These spotting patterns make them easy to separate from cutthroats or rainbows.

Brown trout are found in small numbers in a few waters on the Grand Mesa: Bonham Res., Cottonwood Res. #5, Sunset Res., Trickle Park Res. and Vega Res. Mesa and Leon creeks also hold browns. Browns trout are more tolerant of warm-water temperatures and silty conditions than other trouts and occur in the lower reaches of these streams.

Brook trout (*Salvelinus fontinalis*)



Brook trout have light spots on a dark background which differentiates them from rainbows, browns and cutthroats. Their backs are dark and crisscrossed with light colored, wormy-looking ver-

miculations. The ventral fins are orangish with a white leading edge ahead of a thin black line. Similar to browns, the sides of the fish are sprinkled with yellow or red spots and surrounded by a blue halo.

Brook trout lakes include the Big Battlement, Carson, Deep Slough Res., Doughspoon #1 and 2, Doughty, Dugger, Forty Acre, Lanning, Leon, Lost (near the Mesa Lakes), Morris, Porter #1 & 4, South Mesa, and Youngs Lake.



Snake River cutthroat trout (*Oncorhynchus clarki* subsp.)

Snake River cutthroat trout, like rainbows browns and Colorado River cutthroats, have dark spots on a light background. The spots are "peppery" and concentrated near the tail. The characteristic cutthroat slashes are usually orange rather than crimson red. Snake River cutthroats are more brassy colored than Colorado River cutthroats and less silvery than rainbows.

Snake River cutthroats are not native to Colorado and are found in only a few waters on the Grand Mesa. They have been stocked in Cedar Mesa Res., Cottonwood Res. #4, Forrest Lake, Island Lk., Military Park Res., Trickle Park Res., Rimrock Res. and Vega Res.



Splake (*S. namaycush* x *Salvelinus fontinalis*)

Splake are a hybrid trout produced by crossing a female lake trout with a male brook trout. From the lake trout they inherit a slightly forked tail - all other Grand Mesa trouts all have a square-shaped tail. They have light spots on a dark background and tricolored pectoral fins. Splake can be real trophies. The world-record splake was caught from Island Lake in 1976 and weighed 18 pounds, 15 ounces. Splake have been stocked in Big Eggleston, Cottonwood Res. #1, Island Lk., Little Gem Res. and Ward Lake.



Arctic grayling (*Thymallus arcticus*)

The non-native Arctic grayling is a distant cousin of trout. Grayling are easily recognized by their large, sail-like dorsal fin. This fin has rows of bluish spots with rose or white tinges along its edge. The tail is more deeply forked than splake. Grayling have larger scales than trout. Anglers can find grayling in Bonham Res. and upstream in Big Creek.



White sucker (*Catostomus commersoni*)

White sucker are brown with yellowish undersides and fins. They have coarse scales that are larger near the tail than the head. The mouth is under the snout and surrounded by large, fleshy lips. They often reach 18 inches and weigh two or more pounds. White sucker tolerate low water and oxygen levels and can survive better than trout in drawn-down reservoirs. They are non-native to the Grand Mesa. White sucker are common in Hotel Twin, Alexander, Baron, Bonham, and Cottonwood Res. #1.



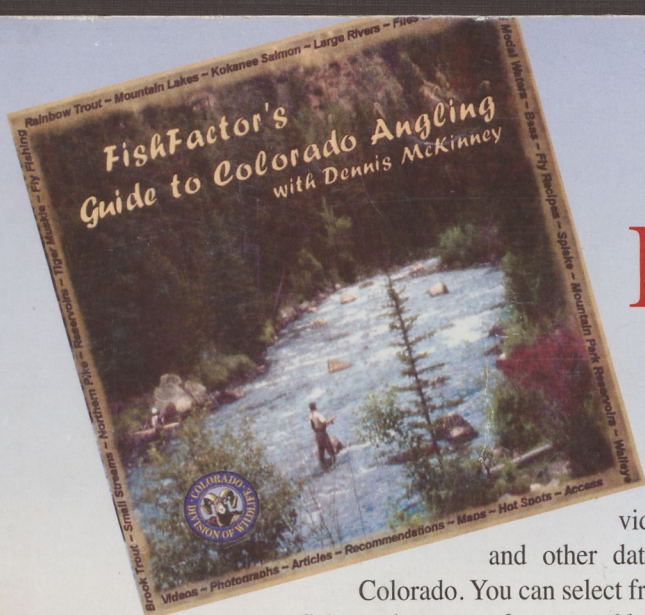
Mottled sculpin (*Cottus bairdi*)

Adult mottled sculpins rarely exceed 4 inches in length. They are a blotchy brown color with dark spots and a broad, flat head and bulging eyes. This native fish is a seldom seen resident of Grand Mesa streams. It prefers to hide amongst rocks in the stream bottom and is only occasionally caught by anglers using worms. Sculpin can be found in Plateau and Leon creeks and sometimes caught by anglers at Vega Reservoir.



Fathead minnow (*Pimephales promelas*)

Fathead minnows grow to only 2 or 3 inches. They have grayish backs and lighter undersides with one short, stubby spine on the front of the dorsal fin. Breeding males are very dark with vertical stripes and tubercles on the snout. This non-native minnow appeared on the Grand Mesa relatively recently. Swarms of immature fathead minnow can be seen along the shorelines of Big Meadows, Res., Bonham Res., Cottonwood Res. #5 and Griffith Res. #1.



Fishing for The Right Information?

The FishFactor CD is the ultimate guide to angling in Colorado.

This is an entertaining, one-of-a-kind CD packed with video clips, photos, species information, directions, maps and other data on everything you need to know about fishing in Colorado. You can select from 370 lakes, reservoirs and streams, sort them by region, name, fish species, type of water and hot spots. View 500 photographs and 100 videos and download topographical maps of places you can fish. Pick up recommendations for flies and lures with recipes for more than 50 flies.

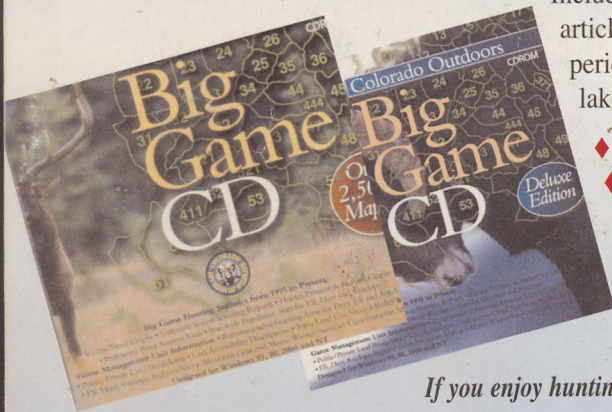
\$52.95
Includes shipping & handling

Included are statewide hatch charts and descriptions of aquatic invertebrates. Read in-depth articles and get local contacts and camping information. Drought impact analysis is updated periodically from the FishFactor's Web site. Also included is stocking data on high country lakes and hot spots for backcountry fishing, large fish, native trout and family fishing.

- ◆ FishFactor is easy to use
- ◆ You'll enjoy the hundreds of photos and video clips
- ◆ It's full of surprises for the novice and experienced angler
- ◆ Topo maps are included for all locations

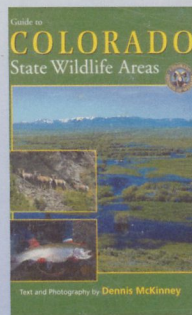
For quick delivery, order online at www.FishFactor.net

If you enjoy hunting, you'll want to check out our two new hunting CDs at www.BigGameCD.com



All About Colorado's Trout Fishing Video will show you one of the largest caddis hatches in the country, where to find backcountry brook trout, and some of the best Colorado flies and lures; This video will help you get the outdoor experience you're looking for. Approx. 60 min. \$17.95.

Colorado Fishing Hot Spots Video features floating the famed Rio Grande during the height of the salmon fly hatch, taking the challenge of high-altitude golden trout, exploring the plains reservoirs and traveling to Colorado's high lakes for some exotics. Approx. 30 min. \$17.95.



Guide To Colorado State Wildlife Areas

This is the first-ever comprehensive guide to the Division of Wildlife's 241 State Wildlife Areas. The 360-page book contains recommended areas for hunting, fishing and watching wildlife and provides information on primary use, location, size, elevation, camping, species information and directions – plus regional maps and more than 166 full-color photographs. Author Dennis McKinney traveled to all of the State Wildlife Areas and wrote the book from a sportsman's point of view. \$27.95.

ORDER FORM (Prices include postage and handling)

	Price	Qty.	Total
FishFactor CD	\$52.95		
Big Game CD, Standard Edition	\$47.95		
Big Game CD, Deluxe Edition	\$97.95		
Guide To State Wildlife Areas Book	\$27.95		
All About Colorado's Trout Fishing	\$17.95		
Colorado Fishing Hot Spots Video	\$17.95		
Colorado Warm-water Fishing Video	\$17.95		
Fishing The Grand Mesa Book <small>(Updated)</small>	\$5.00		
Order any two videos for	\$30.00		
Order any three videos for	\$43.50		
TOTAL			

SHOP ONLINE AT <http://wildlife.state.co.us/shopDOW>

Name _____
 Address _____
 City _____ State _____ Zip _____
 Daytime phone _____
METHOD OF PAYMENT
 Charge my Visa MasterCard Payment enclosed
 Account No. _____ Exp. Date _____
 Signature _____

RECEIVED
 JUL 17 2006
 STATE PUBLICATIONS
 Colorado State Library

COLORADO OUTDOORS 6060 Broadway, Denver, CO 80216 44
 (303) 297-1192